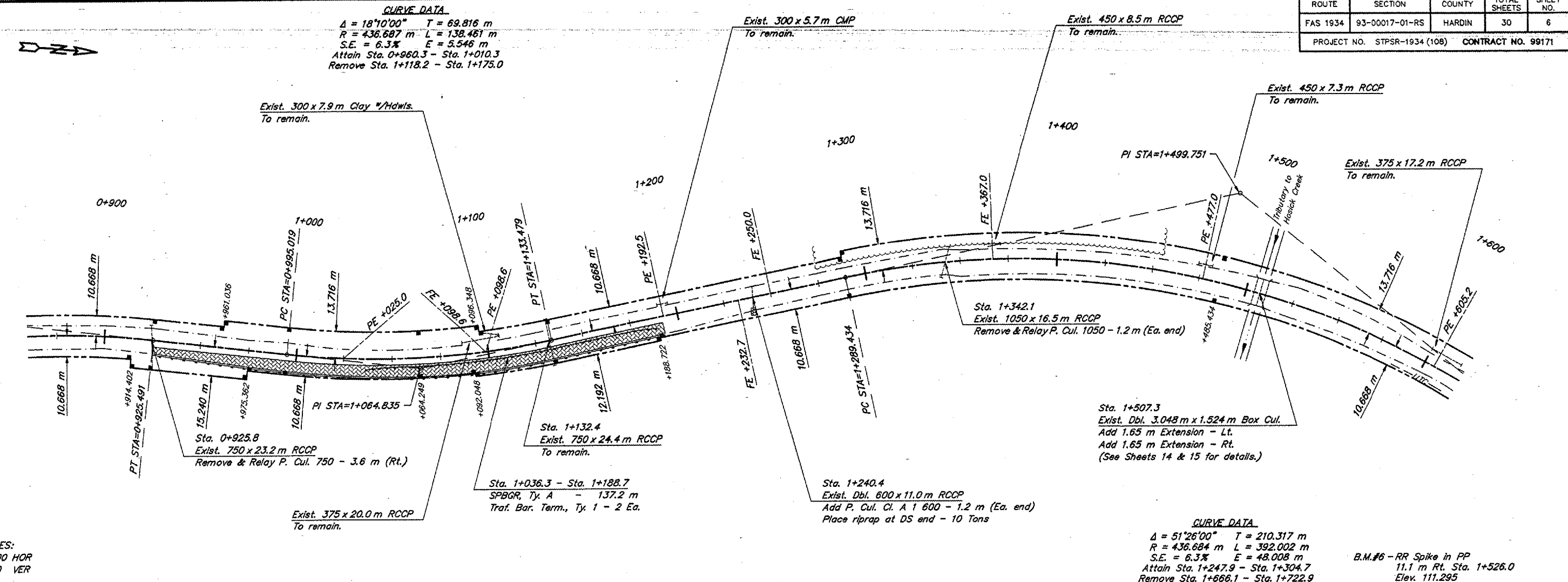


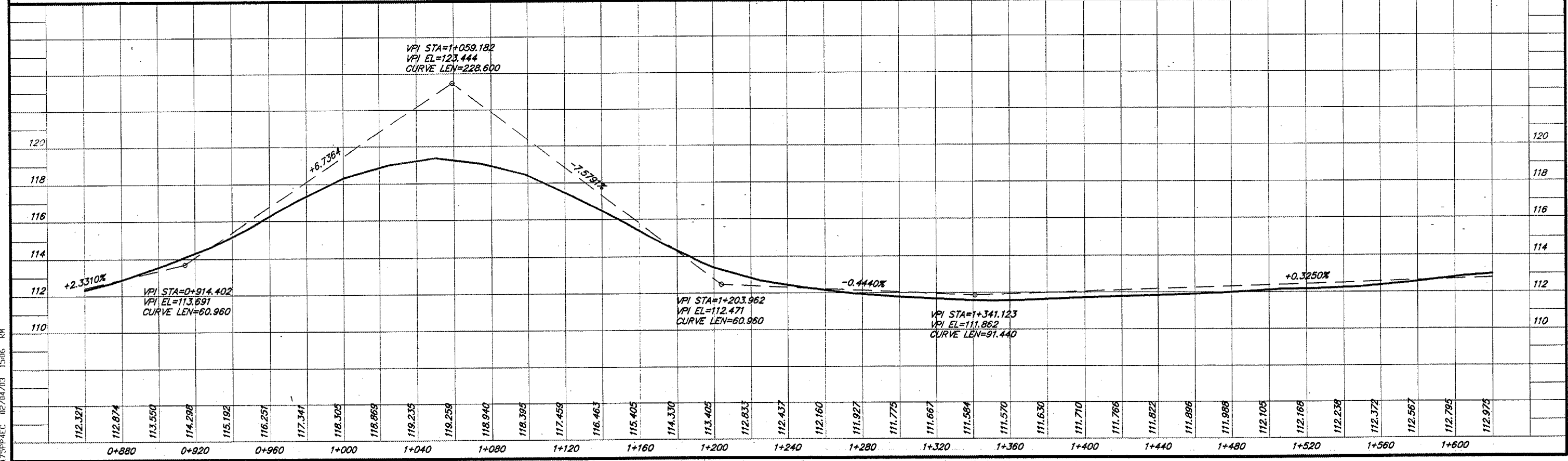
ROUTE	SECTION	COUNTY	TOTAL SHEETS	SHEET NO.
FAS 1934	93-00017-01-RS	HARDIN	30	6
PROJECT NO. STPSR-1934 (108)			CONTRACT NO. 99171	

CURVE DATA
 $\Delta = 18^{\circ}10'00''$ $T = 69.816$ m
 $R = 436.687$ m $L = 138.461$ m
 $S.E. = 6.3\%$ $E = 5.546$ m
 Attain Sta. 0+960.3 - Sta. 1+010.3
 Remove Sta. 1+118.2 - Sta. 1+175.0



SCALES:
 1:1000 HOR
 1:100 VER

CURVE DATA
 $\Delta = 51^{\circ}26'00''$ $T = 210.317$ m
 $R = 436.684$ m $L = 392.002$ m
 $S.E. = 6.3\%$ $E = 48.008$ m
 Attain Sta. 1+247.9 - Sta. 1+304.7
 Remove Sta. 1+666.1 - Sta. 1+722.9



47SPR/EC 02/04/03 1506 RM