

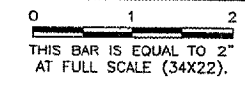
**BL059**

K:\BloomingtonAp\0508503\Draw\Sheets\  
 FILE: 09\_PLANPRO.dwg  
 LAYOUT: 09\_PLANPRO  
 UPDATE BY: adraughan  
 SURVEY BOOK #  
 DATE: Fri 1/13/06 10:23am  
 XREF DWG: C:\info.dwg  
 RCp01001.dwg  
 rcpr1001.dwg  
 BMIDesBase.dwg  
 BASE\_EXISTGEO.dwg  
 BASE\_PROPGEOD.dwg

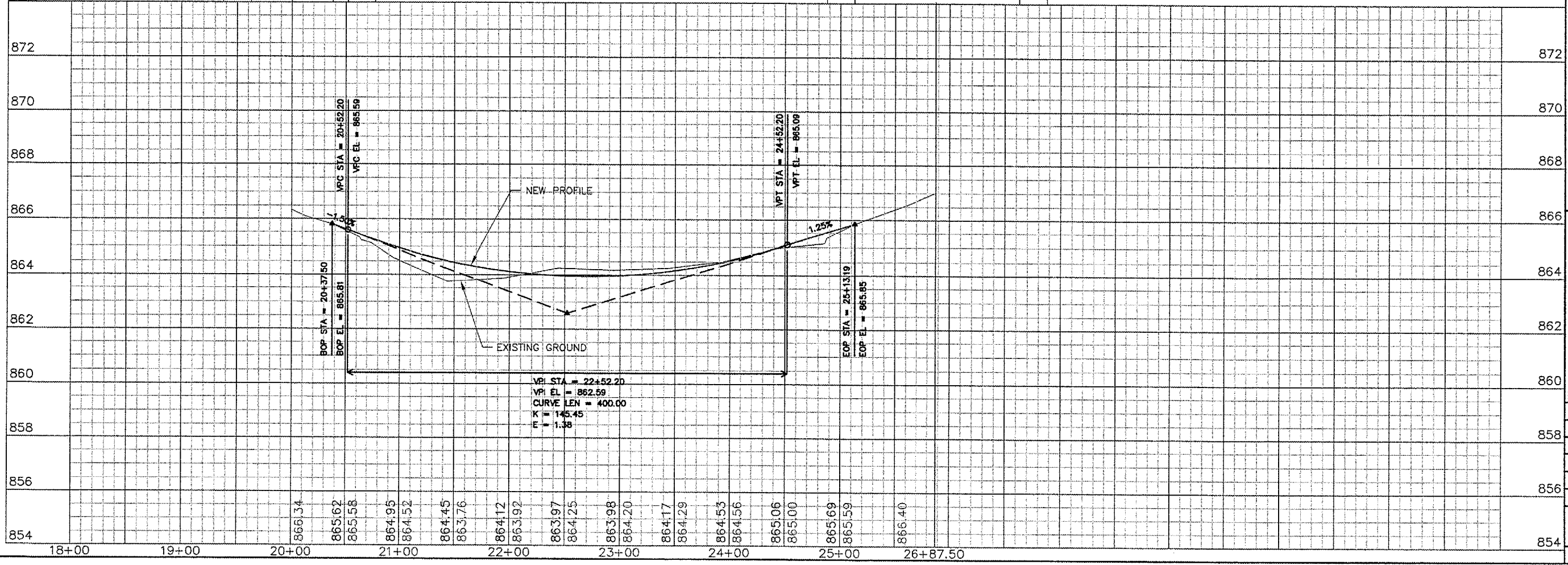
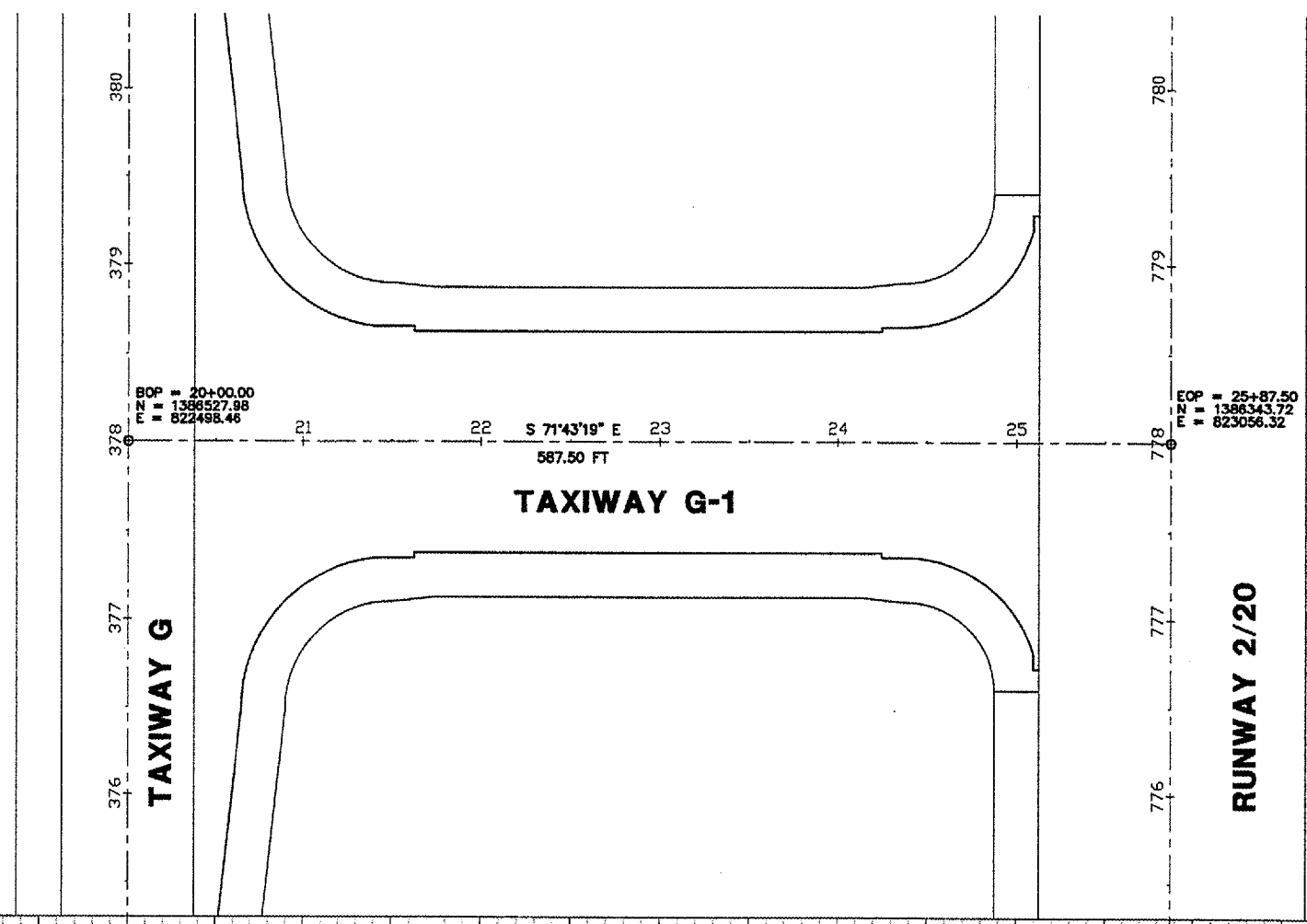


REVISIONS

NUMBER	BY	DATE



SCALES:  
 1" = 50' HOR  
 1" = 2' VER



BLOOMINGTON-NORMAL AIRPORT AUTHORITY  
 CENTRAL ILLINOIS REGIONAL AIRPORT  
 BLOOMINGTON, ILLINOIS

CONSTRUCT TAXIWAY G-1  
 TAXIWAY G-1 PLAN & PROFILE  
 STA. 18+00 TO STA. 25+87.50

© Copyright CMT, Inc.  
**CMT**  
 CRAWFORD, MURPHY & TILLY, INC.  
 CONSULTING ENGINEERS  
 License No. 864-00063

DESIGN BY:	JEF
DRAWN BY:	DPA
CHECKED BY:	RLV
APPROVED BY:	JEF
DATE:	1/13/2006
JOB No:	05085-0300
ILLINOIS PROJECT	BMI-3452
A.I.P. PROJECT	3--17--0006--XX
SHEET	09 OF 33 SHEETS