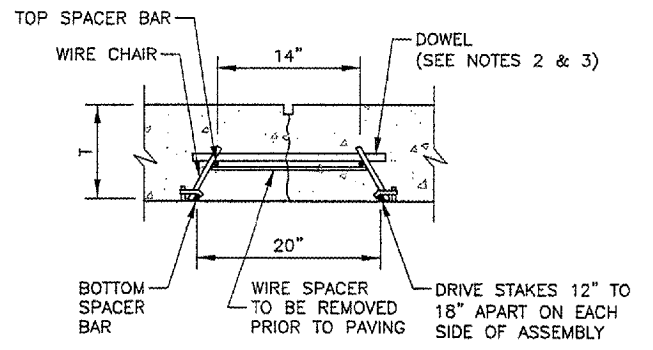
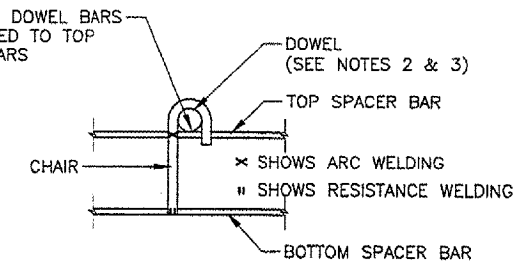


DOWEL BASKET ASSEMBLY DETAILS AND NOTES
N.T.S.



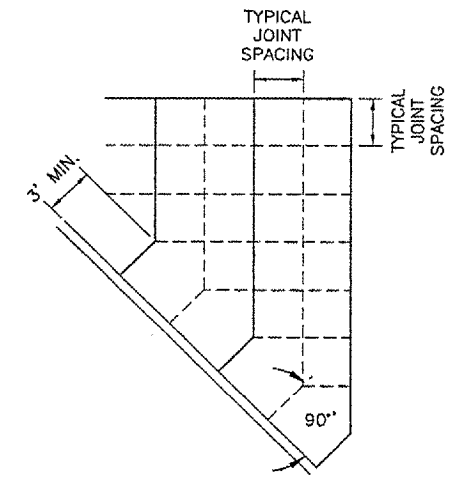
DOWEL BAR INSTALLATION DETAIL
N.T.S.



TYPICAL DOWEL BASKET ELEVATION DETAIL SHOWING CHAIR
N.T.S.

DOWEL BASKET NOTES

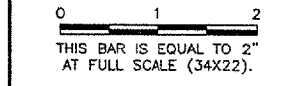
- 1.) #9 GA. WIRE SPACER BAR ARC WELDED TO THE BOTTOM OF TOP SPACER BAR. (MAY BE MECHANICALLY ATTACHED IN LIEU OF WELDING) 3 REQUIRED PER UNIT. THIS WIRE MUST BE CUT OR REMOVED PRIOR TO PAVING.
- 2.) DOWEL BAR DIAMETER, LENGTH & SPACING SHALL BE AS SHOWN IN TABLE 2.
- 3.) DOWELS SHALL BE EPOXY COATED FULL LENGTH OF DOWEL IMMEDIATELY PRIOR TO PAVING, THE FREE END OF EACH DOWEL SHALL BE LUBRICATED OR OILED, FOR HALF THE LENGTH OF THE DOWEL.



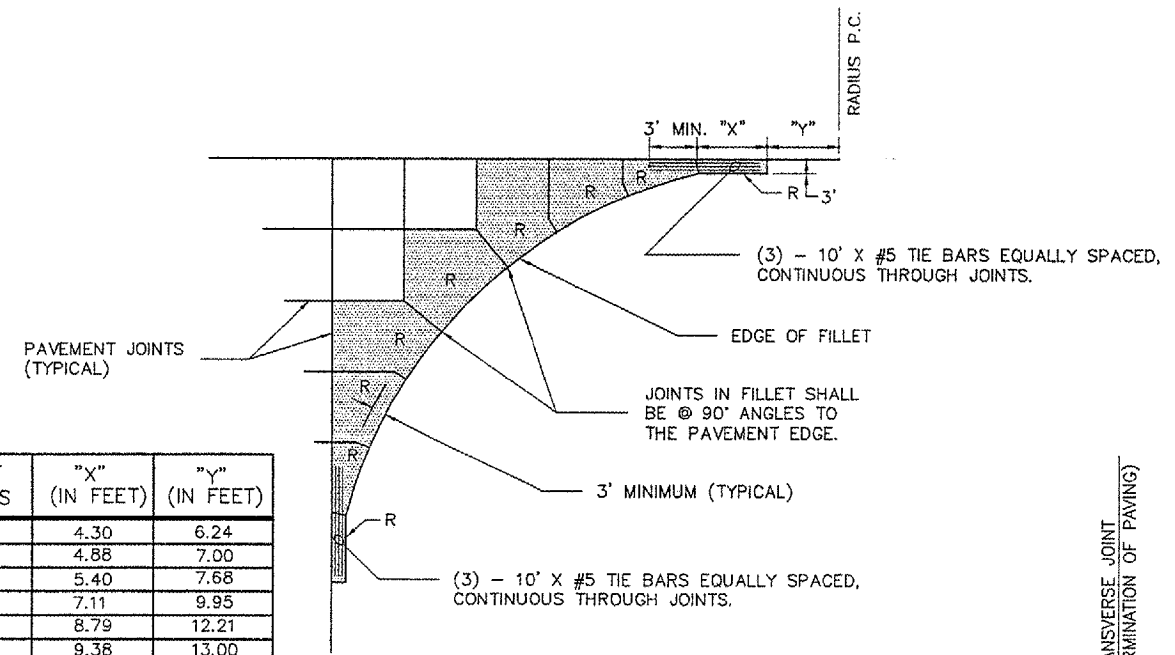
JOINTING AT SKEWED EDGE
N.T.S.

REVISIONS

NUMBER	BY	DATE

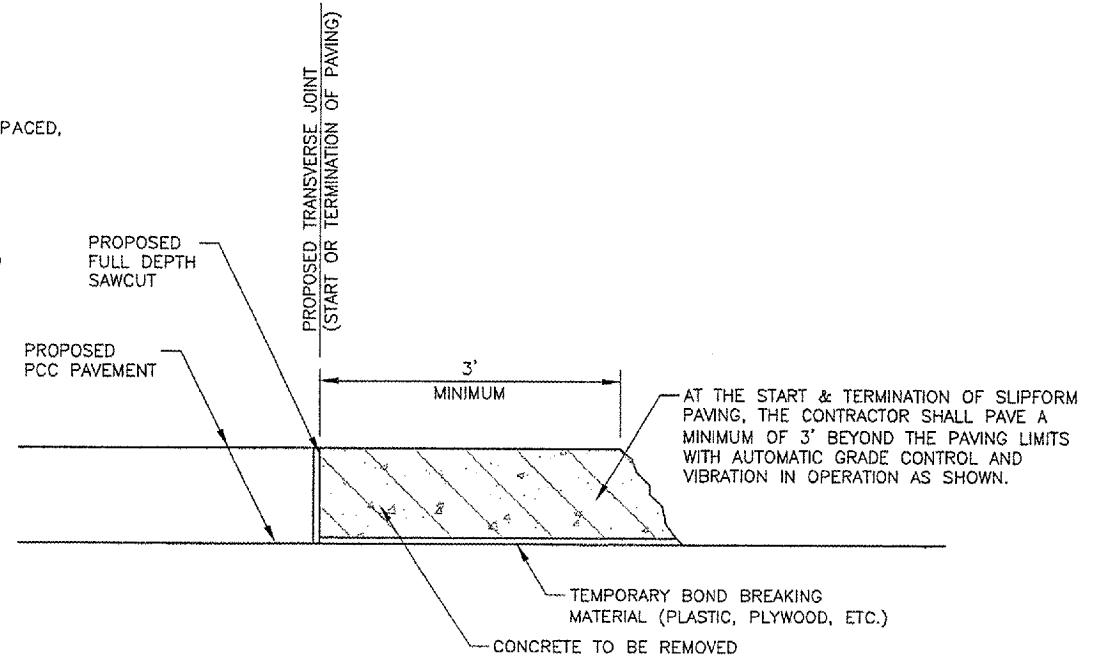


DOWEL BASKET DETAILS
N.T.S.

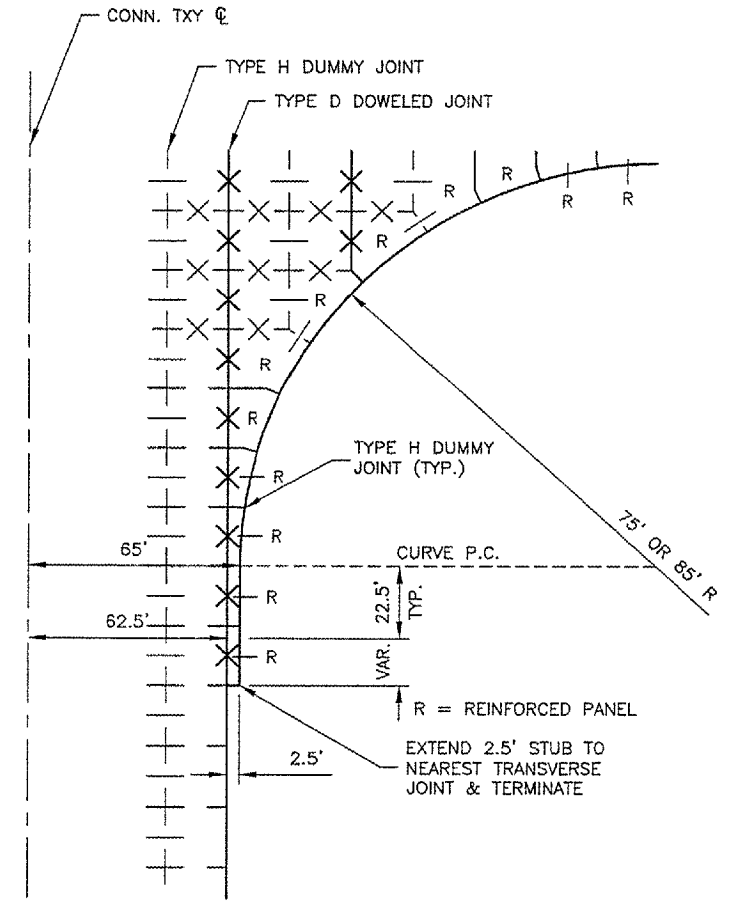


FILLET RADIUS	"X" (IN FEET)	"Y" (IN FEET)
20	4.30	6.24
25	4.86	7.00
30	5.40	7.68
50	7.11	9.95
75	8.79	12.21
85	9.38	13.00
100	10.21	14.11
125	11.44	15.78
150	12.56	17.29
175	13.58	18.68
200	14.53	19.98

FILLET DETAIL AND FILLET REINFORCING LAYOUT
N.T.S.



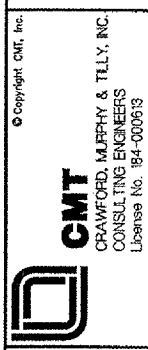
REQUIREMENTS AT START AND TERMINATION OF SLIPFORM PAVING
N.T.S.



JOINTING AT CONNECTING TAXIWAY WIDTH TRANSITION
N.T.S.

1. LOCATION WHERE THIS DETAIL APPLIES:
 - CONN. TXY G1, STA. 24+37.5±, RT. & LT.
 - CONN. TXY G1, STA. 21+50±, RT. & LT.

BLOOMINGTON-NORMAL AIRPORT AUTHORITY
CENTRAL ILLINOIS REGIONAL AIRPORT
BLOOMINGTON, ILLINOIS
CONSTRUCT TAXIWAY G-1
PAVING & MISCELLANEOUS DETAILS



DESIGN BY: JEF
 DRAWN BY: DPA
 CHECKED BY: RLV
 APPROVED BY: JEF
 DATE: 1/13/2006
 JOB No: 05085-0300
 ILLINOIS PROJECT BMI-3452
 A.I.P. PROJECT 3-17-0006-XX
 SHEET 12 OF 33 SHEETS