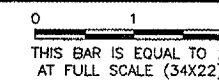
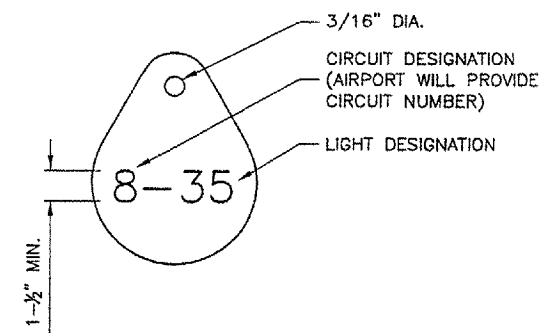


REVISIONS		
NUMBER	BY	DATE

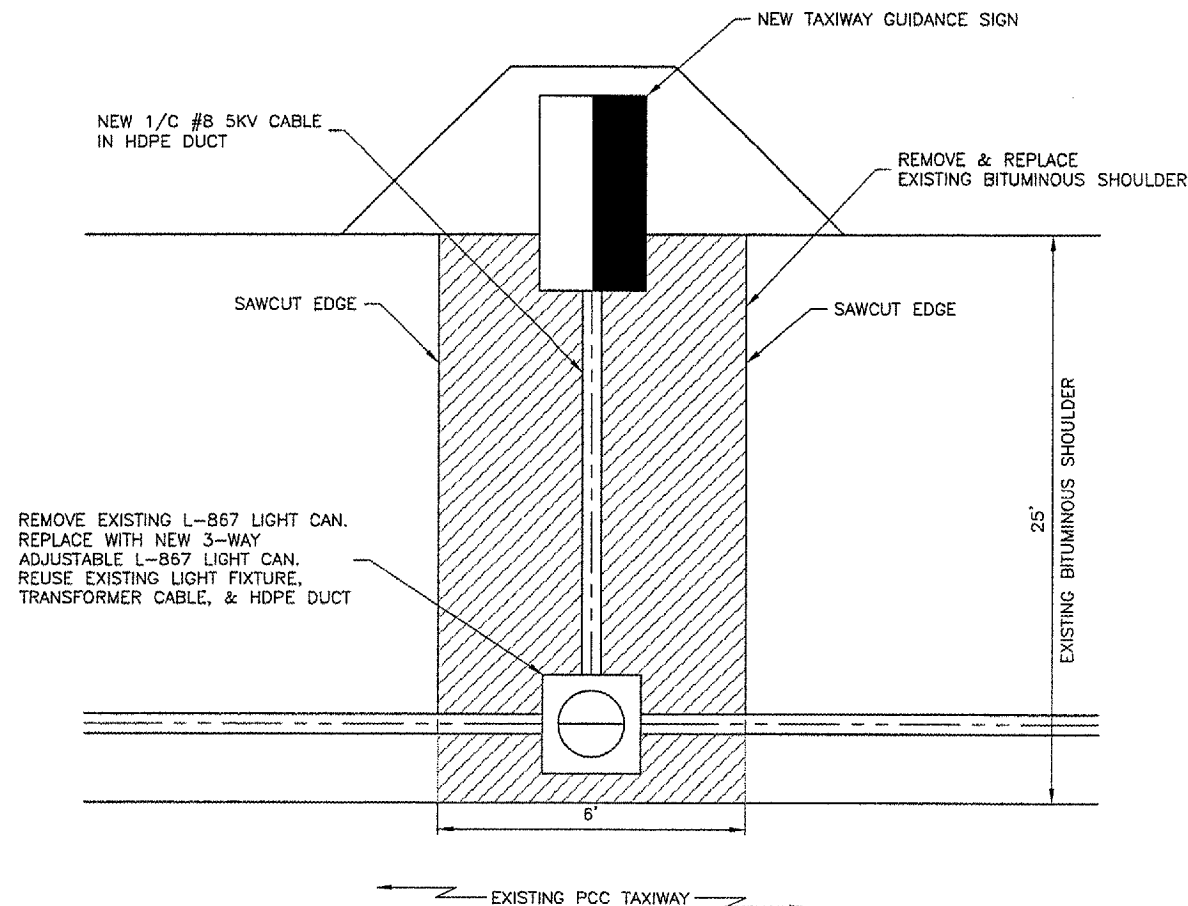


**NOTES**

1. INSTALL A NONCORROSIVE DISC OF 2" MINIMUM DIAMETER WITH THE NUMBER PERMANENTLY STAMPED, CUT OUT, OR ENGRAVED UNDER THE HEAD OF THE BASE PLATE BOLT OR ATTACHED TO LIGHT FLANGE WITH SET SCREW.
2. LEGENDS SHOWN ARE FOR ILLUSTRATIVE PURPOSES ONLY. CONTRACTOR TO COORDINATE LEGEND WITH AIRPORT.
3. THE CONTRACTOR SHALL NUMBER THE EXISTING/PROPOSED LIGHTS AND SIGNS IN EACH CIRCUIT STARTING AT THE HOMERUN CONTINUING AROUND THE ENTIRE CIRCUIT BACK TO THE HOMERUN.
4. AIRFIELD SIGNS SHALL BE TAGGED & NUMBERED.



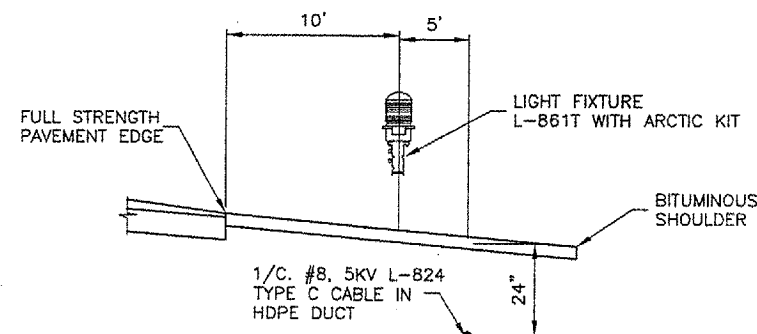
**LIGHT IDENTIFICATION DETAIL**  
N.T.S.



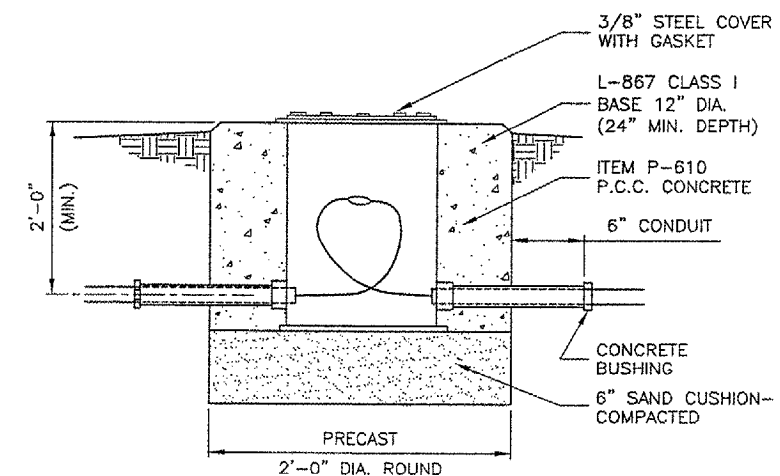
**NEW SIGN IN EXISTING PAVED SHOULDER**  
N.T.S.

**NOTES**

1. COST OF REMOVAL OF BITUMINOUS SHOULDER WILL BE PAID UNDER ITEM AR401900 REMOVE BITUMINOUS PAVEMENT.
2. COST OF REPLACING BITUMINOUS SHOULDER WILL BE PAID FOR UNDER ITEM AR201504 BITUMINOUS BASE COURSE.
3. CONTRACTOR WILL REMOVE EXISTING LED TAXIWAY EDGE LIGHT AND TRANSFORMER. CONTRACTOR WILL BE RESPONSIBLE FOR LED FIXTURE, TRANSFORMER CABLE, HDPE, & ALL OTHER ITEMS ASSOCIATED WITH REMOVAL OF EXISTING LIGHT CAN AND INSTALLATION OF NEW ADJUSTABLE LIGHT CAN. DAMAGE TO THE ABOVE REFERENCED ITEMS DURING THE CONTRACTOR'S OPERATIONS WILL RESULT IN REPLACEMENT OF THE ITEM AT THE CONTRACTOR'S EXPENSE.
4. REMOVAL OF EXISTING LIGHT BASES WILL BE PER EACH.
5. INSTALLATION OF NEW THREE WAY ADJUSTABLE LIGHT BASES WILL BE PAID PER EACH.
6. REMOVAL AND REINSTALLATION OF LED TAXIWAY LIGHT, TRANSFORMERS, CABLE, & HDPE DUCT WILL BE INCIDENTAL TO THE INSTALLATION OF NEW ADJUSTABLE LIGHT BASES.
7. RECOMPACTION OF AGGREGATE BASE COURSE WILL BE INCIDENTAL TO THE REPLACEMENT OF BITUMINOUS SHOULDER.



**LIGHT AND CABLE INSTALLATION DETAIL**  
N.T.S.



**SPLICE CAN DETAIL**  
N.T.S.

**BLOOMINGTON-NORMAL AIRPORT AUTHORITY**  
**CENTRAL ILLINOIS REGIONAL AIRPORT**  
**BLOOMINGTON, ILLINOIS**  
**CONSTRUCT TAXIWAY G-1**  
**ELECTRICAL DETAILS SHEET 1**

© Copyright CMT, Inc.

**CMT**  
 CRAWFORD, MURPHY & TILLY, INC.  
 CONSULTING ENGINEERS  
 License No. 184-000618

DESIGN BY:	JEF
DRAWN BY:	DPA
CHECKED BY:	RLV
APPROVED BY:	JEF
DATE:	1/13/2006
JOB No:	05085-0300
ILLINOIS PROJECT	BMI-3452
A.I.P. PROJECT	3-17-0006-XX
SHEET	20 OF 33 SHEETS