

PERSPECTIVE VIEW

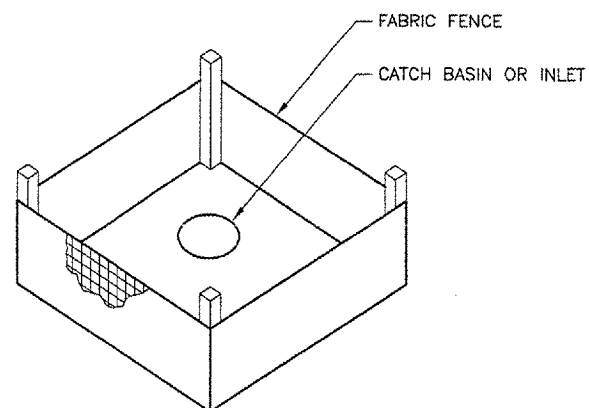
SECTION

**EROSION CONTROL FABRIC FENCE DETAIL**

N.T.S.

**NOTES**

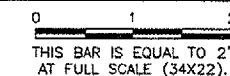
1. WOVEN WIRE FENCE TO BE FASTENED SECURELY TO FENCE POSTS WITH WIRE TIES OR STAPLES.
2. FILTER CLOTH TO BE FASTENED SECURELY TO WOVEN WIRE FENCE WITH TIES SPACED EVERY 2'-0" AT TOP AND MID SECTION.
3. WHEN TWO SECTIONS OF FILTER CLOTH ADJOIN EACH OTHER THEY SHALL BE OVERLAPPED BY 6" MINIMUM AND FOLDED.
4. MAINTENANCE SHALL BE PERFORMED AS NEEDED AND MATERIAL REMOVED WHEN "BULGES" DEVELOP IN THE SILT FENCE. MAINTENANCE, WHICH INCLUDES THE REPLACEMENT OF DAMAGED FENCE SHALL BE CONSIDERED INCIDENTAL TO THE COST OF THE EROSION CONTROL FENCE.



**INLET PROTECTION WITH FABRIC**

N.T.S.

REVISIONS		
NUMBER	BY	DATE



**BLOOMINGTON-NORMAL AIRPORT AUTHORITY**  
**CENTRAL ILLINOIS REGIONAL AIRPORT**  
**BLOOMINGTON, ILLINOIS**

**CONSTRUCT TAXIWAY G-1**

**EROSION CONTROL DETAILS**

© Copyright CMT, Inc.

**CMT**  
 CRAWFORD, MURPHY & TILLY, INC.  
 CONSULTING ENGINEERS  
 License No. 194-000613



DESIGN BY:	JEF
DRAWN BY:	DPA
CHECKED BY:	RLV
APPROVED BY:	JEF
DATE:	1/13/2006
JOB No:	05085-0300
ILLINOIS PROJECT	BMI-3452
A.I.P. PROJECT	3-17-0006-XX
SHEET	31 OF 33 SHEETS