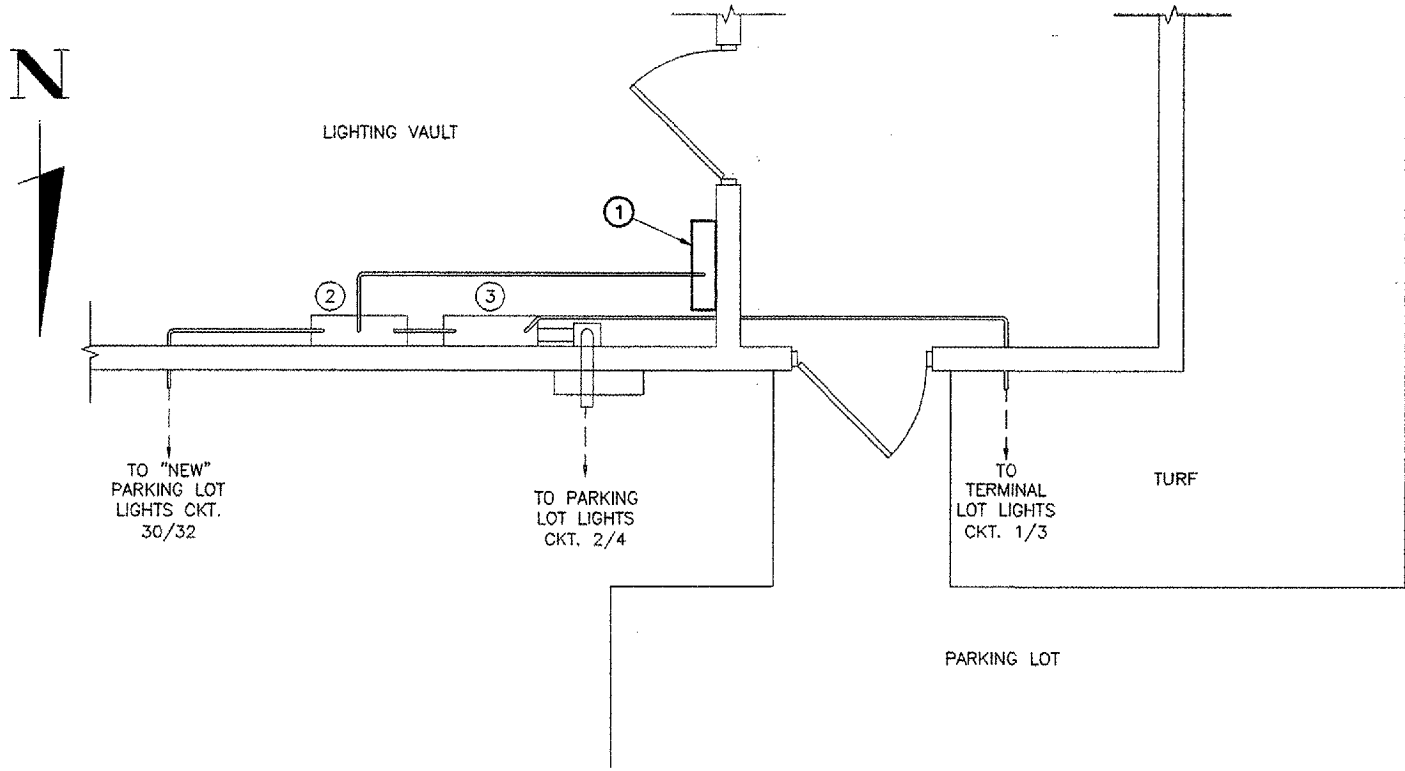
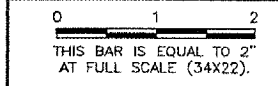


BL060

K:\Projects\RegionAp\0508506\Draw\Sheet\...
 FILE: 007_Pr_Vault & Sched.dwg
 LAYOUT: Work
 UPDATE BY: dburris
 SURVEY BOOK #
 DATE: Thu 1/12/06 1:14pm
 XREF DWG: Vault_plan.dwg
 CLNTINF.DWG



REVISIONS		
NUMBER	BY	DATE



NEW LAYOUT
 $\frac{3}{8}'' = 1' - 0''$

LEGEND

- ① NEW 225A, 208V, 3 PH., 4W, NEMA 1, PANEL NALP WITH 225A MCB, SQUARE D NQOD OR EQUIVALENT.
- ② EXISTING 600A SUB PANEL INTERCEPT CIRCUITS $\frac{1}{2}$, $\frac{3}{4}$ & $\frac{3}{32}$ AT THIS PANEL AND FEED FROM NEW 225A PANEL ①. WIRE NEW CIRCUITS IN A 1" GRSC.
- ③ EXISTING 600A MAIN DISTRIBUTION PANEL.

PANEL SCHEDULE																	
PANEL DESIGNATION:		NALP		BOND NEUTRAL AND GROUND BAR:NO						TYPE:		Square D NQOD		42			
LOCATION:		Airfield Lighting Vault		SHORT CIRCUIT RATING: 10,000 A						POLE:							
VOLTS: 208Y / 120				WIRE: 4				AMPS: 225									
PHASE: THREE				MOUNTING: Surface				MAIN CIRCUIT BREAKER: 225A									
CKT NO.	LOAD	BREAKER SIZE	LOAD AMPS	USAGE FACTOR	PHASE AMPS (USAGE)			POLE NO.	PHASE AMPS (USAGE)			USAGE FACTOR	LOAD AMPS	BREAKER SIZE	LOAD	CKT NO.	
					A	B	C		A	B	C						
1	TERMINAL LOT LIGHTS	30A-2P	24	1	24			1	2	0				20A-1P	SPARE	2	
3			24	1	24			3	4	0				20A-1P	SPARE	4	
5	PARKING LOT LIGHTS	30A-2P	24	1	24		24	5	6		0			20A-1P	SPARE	6	
7			24	1	24			7	8	0						8	
9	"NEW" PARKING LOT LIGHTS	20A-2P	16	1		16		9	10		0					10	
11			16	1		16		11	12		0					12	
13					0			13	14	0						14	
15					0			15	16	0						16	
17					0			17	18	0						18	
19					0			19	20	0						20	
21					0			21	22	0						22	
23					0			23	24	0						24	
25					0			25	26	0						26	
27					0			27	28	0						28	
29					0			29	30	0						30	
SECTION TOTAL:					48	40	40		0	0	0						
MIN. MAIN CIRCUIT BREAKER CAPACITY:					67			PHASE TOTAL AMPS:			48	40	40	TOTAL USAGE LOAD:			15360 VA
					PHASE TOTAL VA:			5760	4800	4800	MIN. XFMR VA:			18200 VA			

BLOOMINGTON-NORMAL AIRPORT AUTHORITY
CENTRAL ILLINOIS REGIONAL AIRPORT
BLOOMINGTON, ILLINOIS
REPLACE AIRFIELD LIGHTING VAULT STANDBY GENERATOR
NEW NON-AIRFIELD LIGHTING PANEL

CMT
 CRAWFORD, MURPHY & TILLY, INC.
 CONSULTING ENGINEERS
 Copyright CMT, Inc.

DESIGN BY: TM
 DRAWN BY: DLB
 CHECKED BY: JET
 APPROVED BY: RLW
 DATE: 1/13/06
 JOB No: 05085-06-00