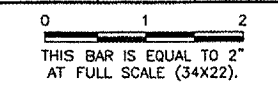



CA002
 K:\Springfield\0503507\Draw\Sheets
 FILE: 53_ELECO3.dwg
 UPDATE BY: Dave Allen
 PLOT DATE: 2/6/2006 4:40 PM
 KEY
 BASE_PROPGEO
 BASE_EXISTTOPO
 BASE_PROPELEC
 tbinfo

REVISIONS		
NUMBER	BY	DATE



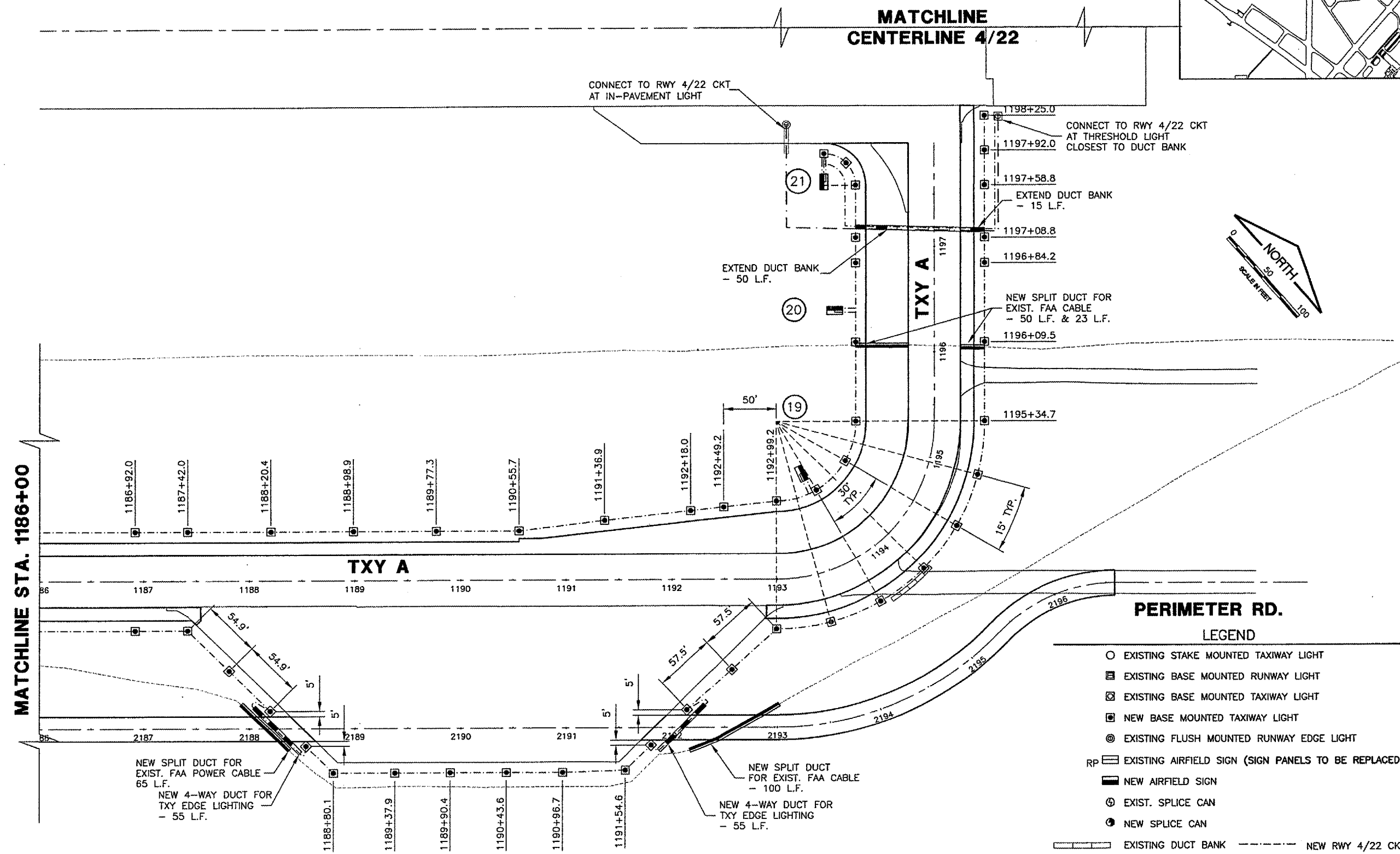

SPRINGFIELD AIRPORT AUTHORITY
ABRAHAM LINCOLN CAPITAL AIRPORT
SPRINGFIELD, ILLINOIS

WIDEN TAXIWAY A - CONSTRUCT PERIMETER ROAD
ELECTRICAL & LIGHTING PLAN 3

© Copyright CMT, Inc.
CMT
 CRAWFORD, MURPHY & TILLY, INC.
 CONSULTING ENGINEERS
 License No. 194-000613

DESIGN BY: MB/KLB
 DRAWN BY: DPA
 CHECKED BY: *REW*
 APPROVED BY: *REW*
 DATE: 1/23/06
 JOB No: 0503507
 IL PROJ. NO. SPI-3555
 AIP PROJ. NO. 3-17-0096-44
 SHEET 53 OF 83 SHEETS

MATCHLINE
CENTERLINE 4/22



MATCHLINE STA. 1186+00

PERIMETER RD.

LEGEND

- EXISTING STAKE MOUNTED TAXIWAY LIGHT
- EXISTING BASE MOUNTED RUNWAY LIGHT
- ⊠ EXISTING BASE MOUNTED TAXIWAY LIGHT
- NEW BASE MOUNTED TAXIWAY LIGHT
- ⊙ EXISTING FLUSH MOUNTED RUNWAY EDGE LIGHT
- RP ■ EXISTING AIRFIELD SIGN (SIGN PANELS TO BE REPLACED)
- NEW AIRFIELD SIGN
- ⊕ EXIST. SPLICE CAN
- NEW SPLICE CAN
- ▬ EXISTING DUCT BANK
- ▬ NEW DUCT BANK
- ▬ NEW 4" SPLIT DUCT
- ▬ EXISTING CABLE
- ▬ NEW CIRCUIT #3
- ▬ NEW CIRCUIT #7
- ▬ NEW RWY 4/22 CKT
- ▬ EXISTING ILS FAA CABLE
- R REMOVE

SIGN	STATION
19	1193+65.36
20	1196+39.75
21	1197+62.16