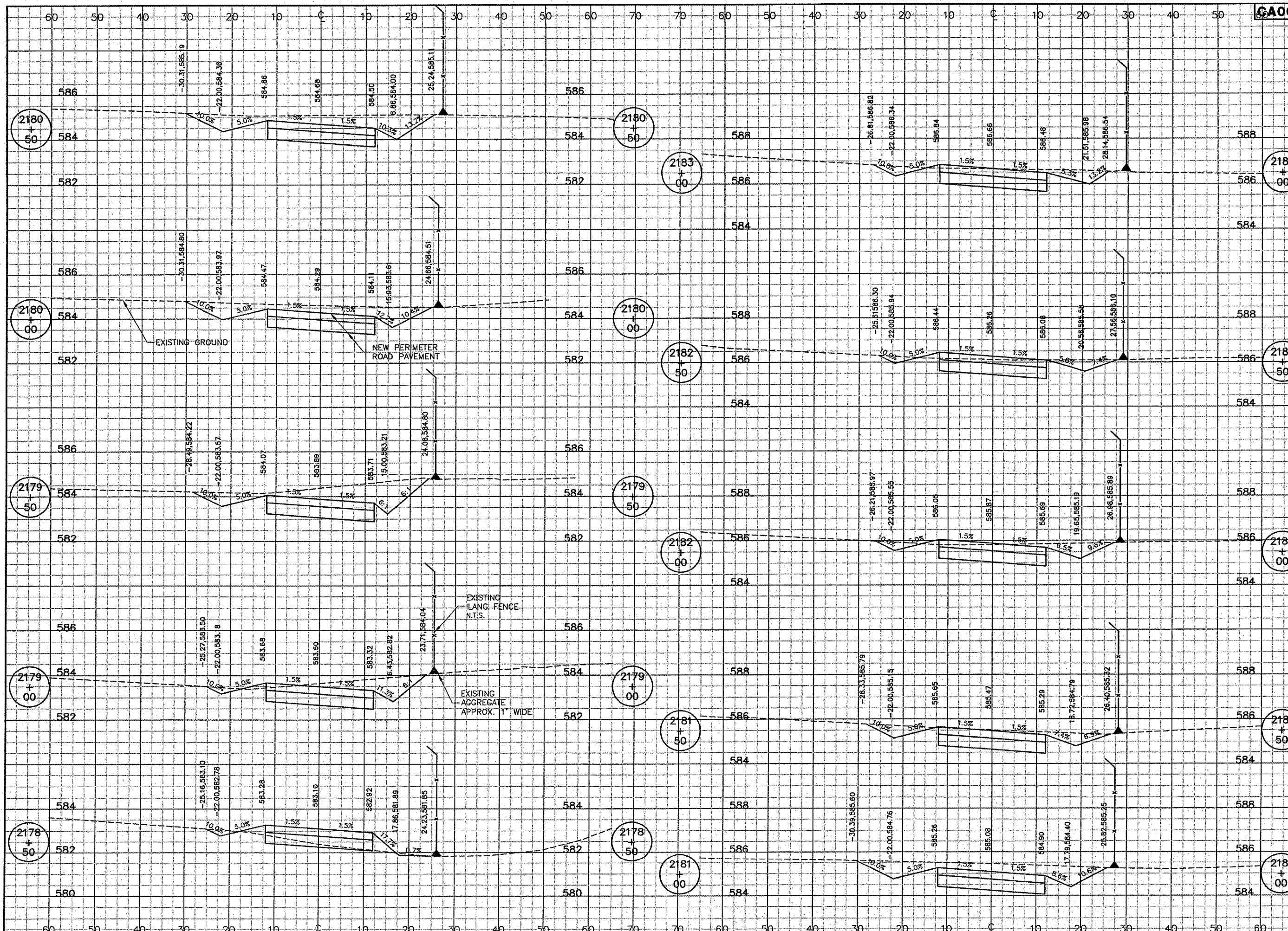
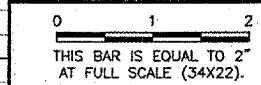


CA002

K:\Springfield\0503507\Draw\Sheets  
FILE: 80\_XSEC14.dwg  
UPDATE BY: Dave Allen  
PLOT DATE: 2/6/2006 5:42 PM  
tinfo  
rc005002

REVISIONS		
NUMBER	BY	DATE



**SPRINGFIELD AIRPORT AUTHORITY**  
**ABRAHAM LINCOLN CAPITAL AIRPORT**  
**SPRINGFIELD, ILLINOIS**

**WIDEN TAXIWAY A - CONSTRUCT PERIMETER ROAD**  
**PERIMETER ROAD CROSS SECTIONS 5**  
**STA. 2178+50 TO STA. 2183+00**

**CMT**  
 CRAWFORD, MURPHY & TILLY, INC.  
 CONSULTING ENGINEERS  
 License No. 084-000613

DESIGN BY:	CBG
DRAWN BY:	DPA
CHECKED BY:	<i>REN</i>
APPROVED BY:	<i>REN</i>
DATE:	1/23/06
JOB No:	0503507

IL PROJ. NO. SPI-3555  
 AIP PROJ. NO. 3-17-0096-44  
 SHEET 80 OF 83 SHEETS