

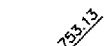
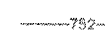



DU071

PATH: K:\0425704-Apron_Ph4\Shee
FILE: apron-grade2.dwg
UPDATE BY: johae
SURVEY BOOK #
XREF DWG:
XREF DWG:
DATE: Wed 12/8/04 1:22pm

NOTES

1. A QUANTITY OF TOPSOIL TO BE DETERMINED IN THE FIELD MAY BE SPREAD EAST OF FREEDOM DRIVE AND GRADED TO DRAIN BY THE CONTRACTOR. (COST INCLUDED TO UNCLASSIFIED EXCAVATION) ANY EXCESS TOPSOIL SHALL BE HAULED OFFSITE BY THE CONTRACTOR. (COST INCLUDED TO UNCLASSIFIED EXCAVATION)
2. IF ONLY THE BASE BID IS AWARDED, THE ENGINEER MAY PROVIDE THE CONTRACTOR WITH A REVISED GRADING PLAN.

LEGEND

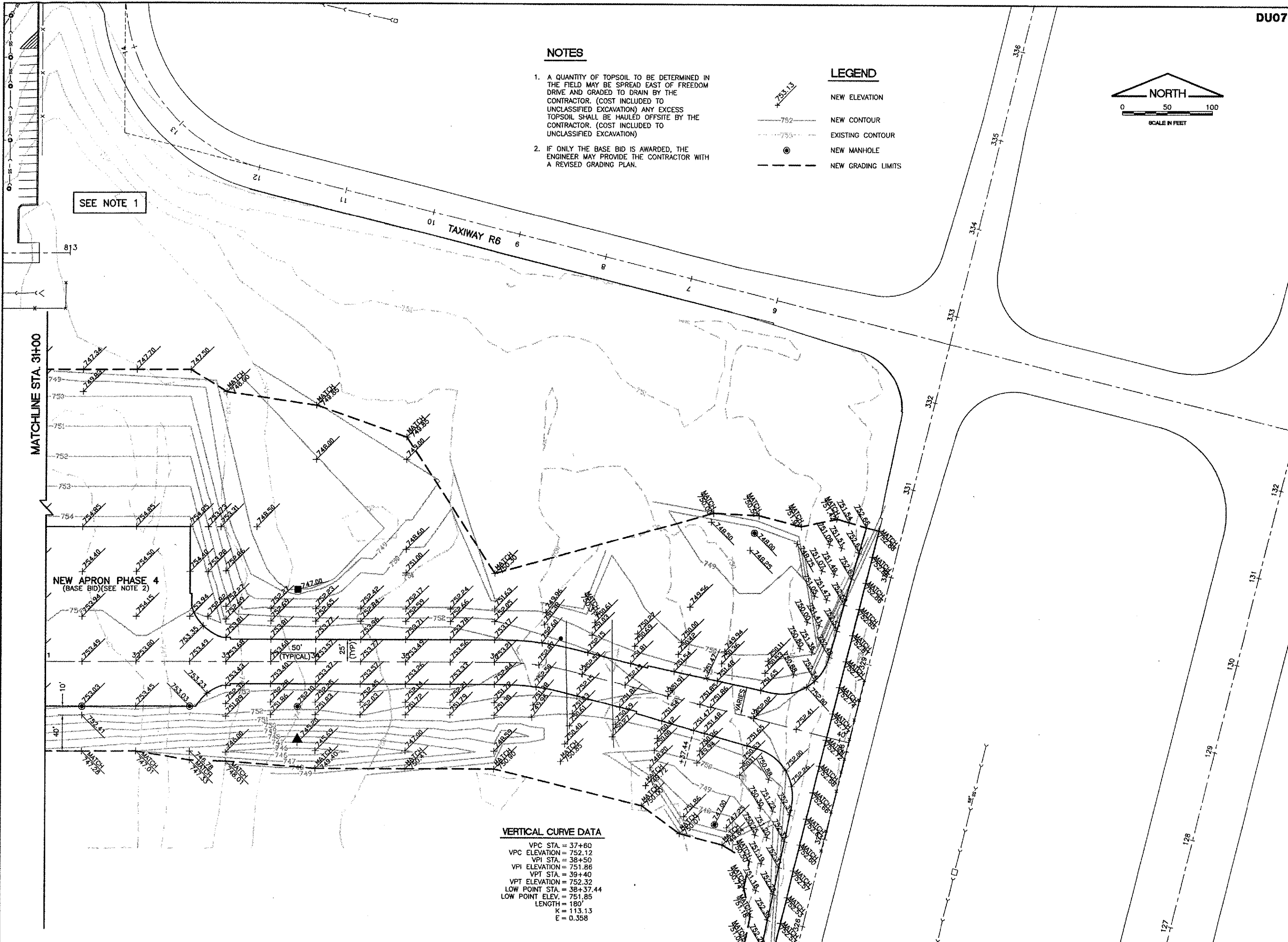
-  NEW ELEVATION
-  NEW CONTOUR
-  EXISTING CONTOUR
-  NEW MANHOLE
-  NEW GRADING LIMITS



REVISIONS

NUMBER	BY	DATE

0 1 2
THIS BAR IS EQUAL TO 2"
AT FULL SCALE (34X22).



**DUPAGE AIRPORT
WEST CHICAGO, ILLINOIS
SOUTH FLIGHT CENTER APRON - PHASE 4
GRADING PLAN - SHEET 2**

© Copyright CMT, Inc.

CMT
CRAWFORD, MURPHY & TILLY, INC.
CONSULTING ENGINEERS
License No. 884-000618



DESIGN BY:	MJS / JRL
DRAWN BY:	JRO
CHECKED BY:	MJS / DKP
APPROVED BY:	MJS
DATE:	01/13/06
JOB No:	04257-04-00-00
A.I.P. PROJECT:	3-17-0017-B18
ILLINOIS PROJECT:	DPA-3391
SHEET	13 OF 36 SHEETS

VERTICAL CURVE DATA

VPC STA. = 37+60
VPC ELEVATION = 752.12
VPI STA. = 38+50
VPI ELEVATION = 751.86
VPT STA. = 39+40
VPT ELEVATION = 752.32
LOW POINT STA. = 38+37.44
LOW POINT ELEV. = 751.85
LENGTH = 180'
K = 113.13
E = 0.358