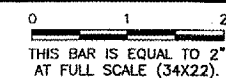


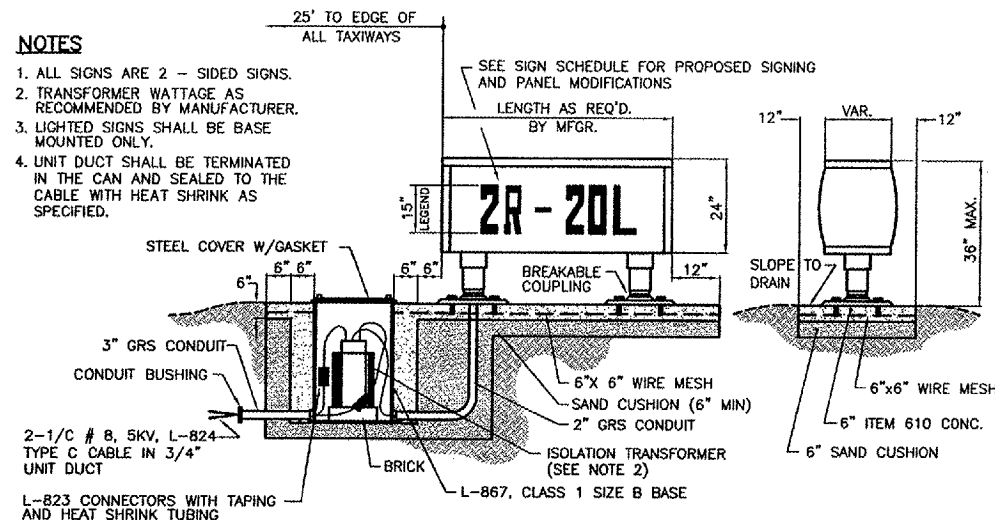
REVISIONS

NUMBER	BY	DATE



NOTES

1. ALL SIGNS ARE 2 - SIDED SIGNS.
2. TRANSFORMER WATTAGE AS RECOMMENDED BY MANUFACTURER.
3. LIGHTED SIGNS SHALL BE BASE MOUNTED ONLY.
4. UNIT DUCT SHALL BE TERMINATED IN THE CAN AND SEALED TO THE CABLE WITH HEAT SHRINK AS SPECIFIED.

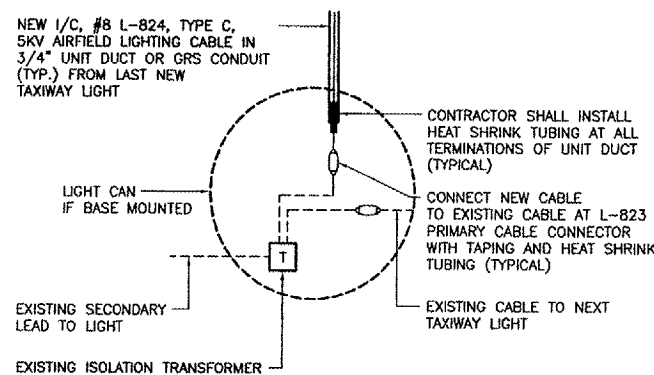


HOLD LINE/TAXIWAY GUIDANCE SIGN L-858, SIZE 2, STYLE 2, CLASS 2

NO SCALE

CONTRACTOR SHALL SUBMIT DETAILED SHOP DRAWING INCLUDING SIGN, COLOR, SIZE, PROPOSED LEGEND, IN ENOUGH DETAIL AND DETERMINE PROPOSED SPACING AND OTHER INFORMATION REQUIRED BY SPECIAL PROVISIONS. CONTRACTOR TO VERIFY PROPOSED SIGN LOCATIONS AND ORIENTATIONS WITH RESIDENT ENGINEER PRIOR TO INSTALLATION. SIGN MANUFACTURER SHALL MATCH EXISTING AIRFIELD SIGNS.

NEW 1/C, #8 L-824, TYPE C, 5KV AIRFIELD LIGHTING CABLE IN 3/4" UNIT DUCT OR GRS CONDUIT (TYP.) FROM LAST NEW TAXIWAY LIGHT

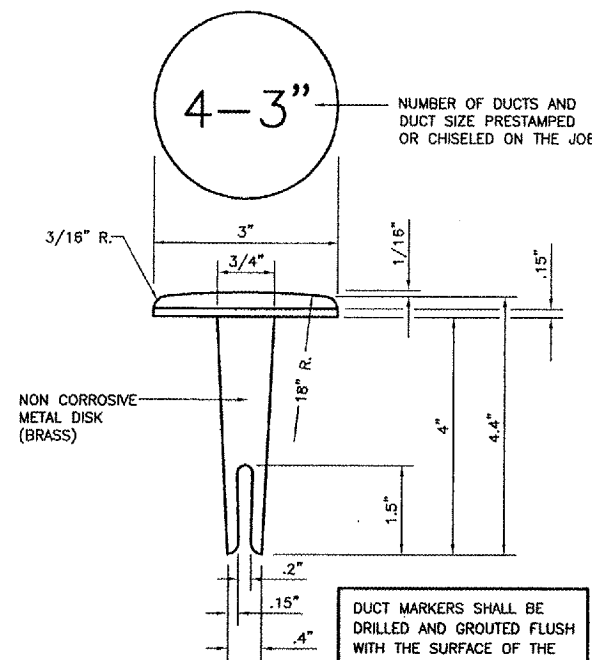


RUNWAY/TAXIWAY LIGHTING CIRCUIT CONNECTION DETAIL

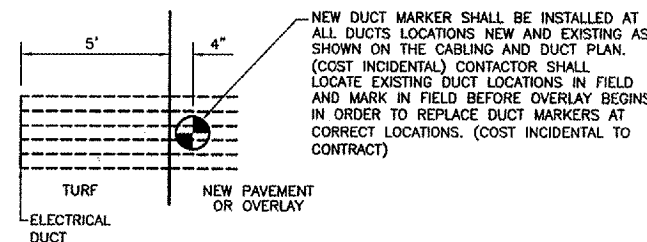
NOT TO SCALE

GENERAL NOTES:

1. THE CONCRETE BASE FOR BASE MTD. LIGHTS AND SIGNS SHALL BE TROWEL FINISHED WITH A 45° BEVELED EDGE. SLOPE TO DRAIN (610).
2. TRANSFORMER HOLDER SHALL BE ANY COMMERCIALY AVAILABLE BRICK.
3. BREAKING GROOVE COUPLINGS SHALL NOT BE OVER 1" ABOVE GROUND LINE.
4. ISOLATION TRANSFORMERS COME WITH A FACTORY INSTALLED PLUG (TYPE 1, CLASS A, STYLE 2) AND RECEPTACLE (TYPE 1, CLASS A, STYLE 9). A TYPE 1, CLASS B, STYLE 3 PLUG AND TYPE 1, CLASS B, STYLE 10 RECEPTACLE SHALL BE INSTALLED ON THE 1/C, No. 8, 5000 V., L-824 TYPE C CABLES FOR CONNECTION TO EACH TRANSFORMER.
5. TO FURTHER REDUCE THE POSSIBILITY OF WATER/MOISTURE ENTRANCE INTO THE CONNECTOR BETWEEN THE CABLE AND THE FIELD ATTACHED CONNECTOR, IT IS REQUIRED THAT A HEAT SHRINKABLE TUBING WITH INTERNAL ADHESIVE BE APPLIED OVER THE ENTIRE CABLE CONNECTOR.
6. ALL SIGNS, LIGHTS, CABLES AND TRANSFORMERS TO BE REMOVED SHALL REMAIN THE PROPERTY OF THE AIRPORT. AT THE DISCRETION OF THE AIRPORT DIRECTOR, THE CONTRACTOR MAY BE REQUIRED TO DISPOSE OF THESE MATERIALS OFFSITE.
7. CONTRACTOR SHALL HAVE THE OPTION TO TRENCH OR PLOW UNIT DUCT. NO ADDITIONAL PAYMENT SHALL BE MADE FOR TRENCHING.
8. ALL RUNWAY/TAXIWAY EDGE LIGHTS SHALL HAVE 2" DIA. COLUMN AND FRANGIBLE COUPLINGS, UNLESS NOTED OTHERWISE.



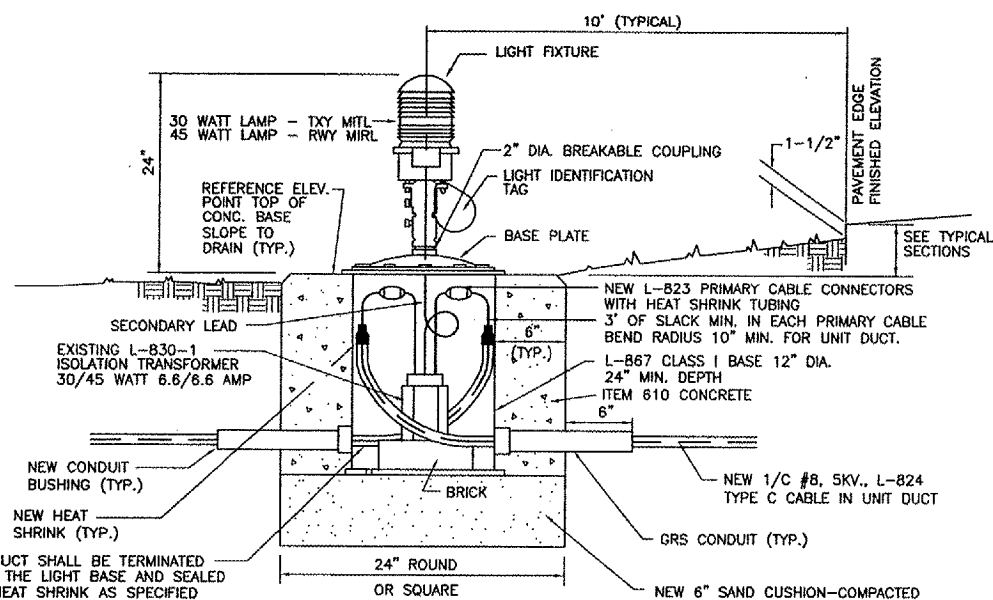
DUCT MARKERS SHALL BE DRILLED AND GROUTED FLUSH WITH THE SURFACE OF THE PAVEMENTS.



DUCT MARKER DETAIL

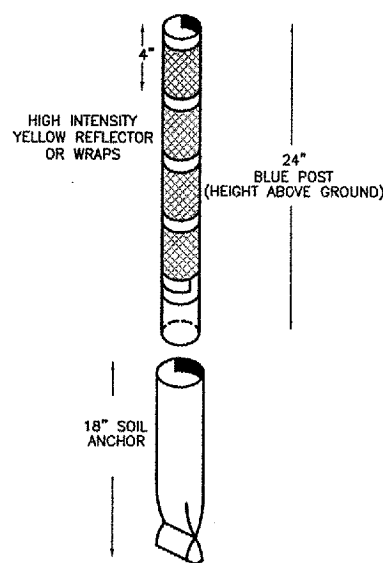
NOT TO SCALE

DUPAGE AIRPORT  
 WEST CHICAGO, ILLINOIS  
 SOUTH FLIGHT CENTER APRON - PHASE 4  
 ELECTRICAL DETAILS  
 SHEET 1



NEW/ ADJUSTMENT/ RELOCATED  
 BASE MOUNTED MEDIUM INTENSITY LIGHT

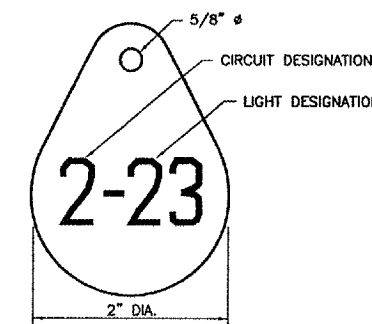
NOT TO SCALE



TAXIWAY RETROREFLECTIVE  
 MARKER DETAIL

NOT TO SCALE

NOTE: RETROREFLECTIVE MARKER SHALL BE UNIPAR, INC. EVAFLEX OR APPROVED EQUAL.



LIGHT IDENTIFICATION DETAIL

NOT TO SCALE

NOTES:

1. INSTALL A NONCORROSIVE DISC OF 2" MINIMUM DIAMETER WITH THE NUMBER PERMANENTLY STAMPED, CUT OUT, OR ENGRAVED UNDER THE HEAD OF THE BASE PLATE BOLT OR ATTACHED TO LIGHT FLANGE WITH A SET SCREW.
2. NUMERALS SHOWN ARE FOR ILLUSTRATIVE PURPOSES ONLY. ALL EXISTING AND NEW TAXIWAY LIGHTS SHALL BE TAGGED AS DIRECTED BY THE RESIDENT ENGINEER. ALL LIGHTS ON EXISTING CIRCUITS THAT HAVE LIGHTING IMPROVEMENTS (NEW OR RELOCATED LIGHTS) SHALL BE RETAGGED.
3. COST OF TAGGING LIGHTS SHALL NOT BE PAID FOR SEPERATELY BUT SHALL BE CONSIDERED INCIDENTAL TO THE CONTRACT.

© Copyright CMT, Inc.  
**CMT**  
 CRAWFORD, MURPHY & TILLY, INC.  
 CONSULTING ENGINEERS  
 License No. 84-000673  
**DM**  
 DuPage Airport

DESIGN BY:	AB
DRAWN BY:	JRO
CHECKED BY:	AB
APPROVED BY:	MJS
DATE:	01/13/06
JOB No:	04257-04-00-00