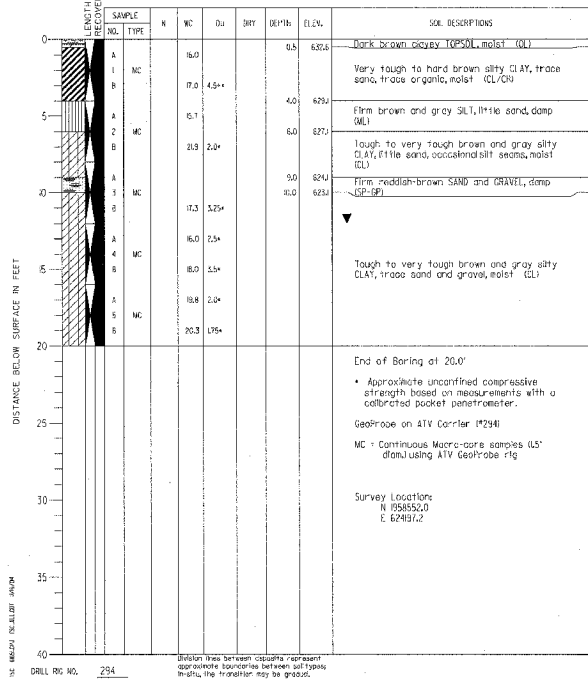
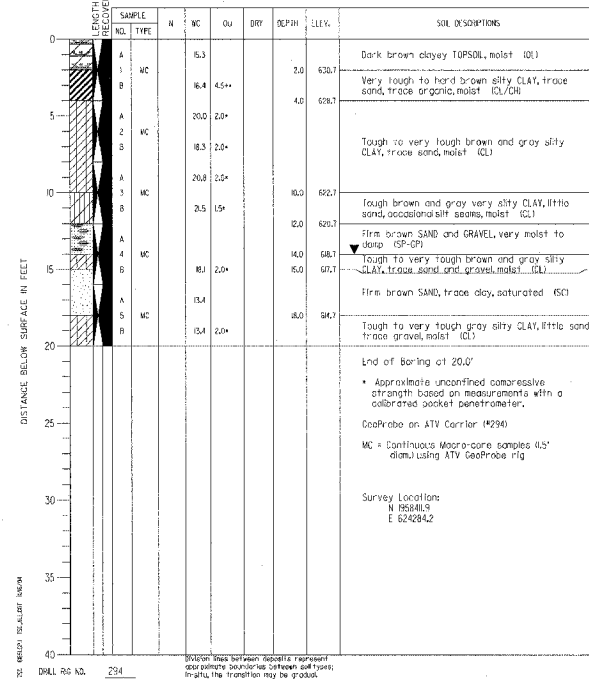


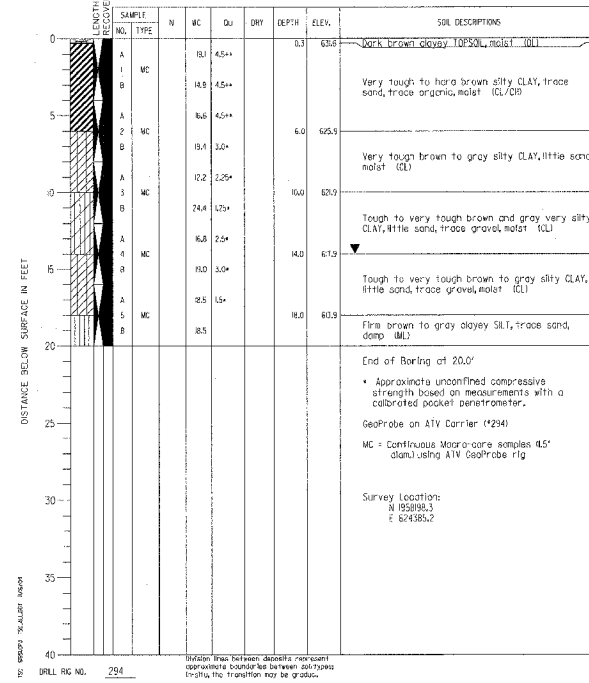
PROJECT: Rand Park Flood Control, Des Plaines, Illinois  
CLIENT: Ground Engineering Consultants, Inc.  
BORING: DB-1 DATE STARTED: 9-22-04 DATE COMPLETED: 9-22-04 JOB: L-61651  
ELEVATIONS: GROUND SURFACE: 633.1, END OF BORING: 603.1  
WATER LEVEL OBSERVATIONS: WHILE DRILLING: 12.0', AT END OF BORING: 12.0'  
24 HOURS



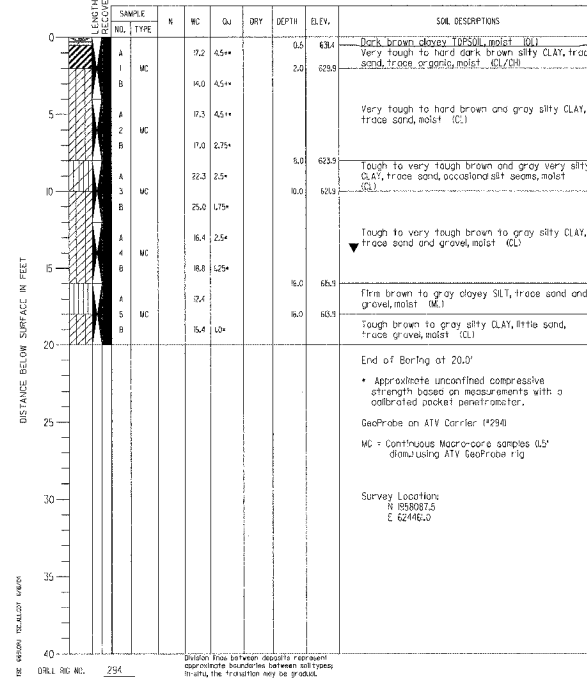
PROJECT: Rand Park Flood Control, Des Plaines, Illinois  
CLIENT: Ground Engineering Consultants, Inc.  
BORING: DB-2 DATE STARTED: 9-22-04 DATE COMPLETED: 9-22-04 JOB: L-61651  
ELEVATIONS: GROUND SURFACE: 632.7, END OF BORING: 602.7  
WATER LEVEL OBSERVATIONS: WHILE DRILLING: 14.0', AT END OF BORING: 14.0'  
24 HOURS



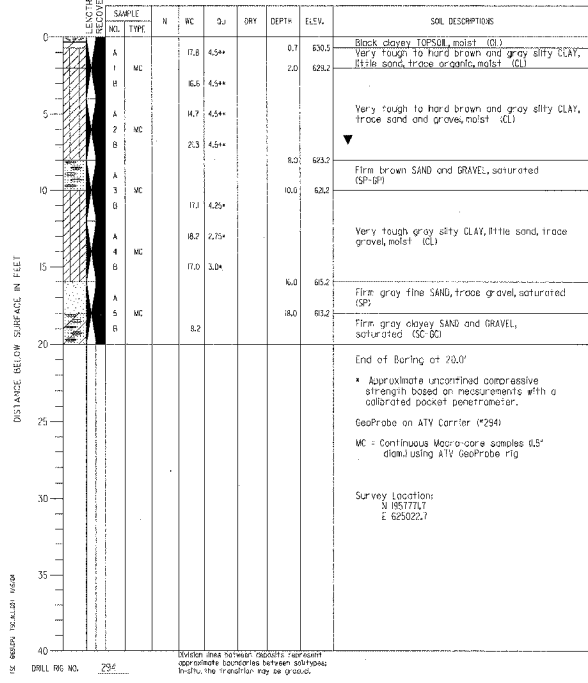
PROJECT: Rand Park Flood Control, Des Plaines, Illinois  
CLIENT: Ground Engineering Consultants, Inc.  
BORING: DB-3 DATE STARTED: 9-22-04 DATE COMPLETED: 9-22-04 JOB: L-61651  
ELEVATIONS: GROUND SURFACE: 633.3, END OF BORING: 613.3  
WATER LEVEL OBSERVATIONS: WHILE DRILLING: 14.0', AT END OF BORING: 14.0'  
24 HOURS



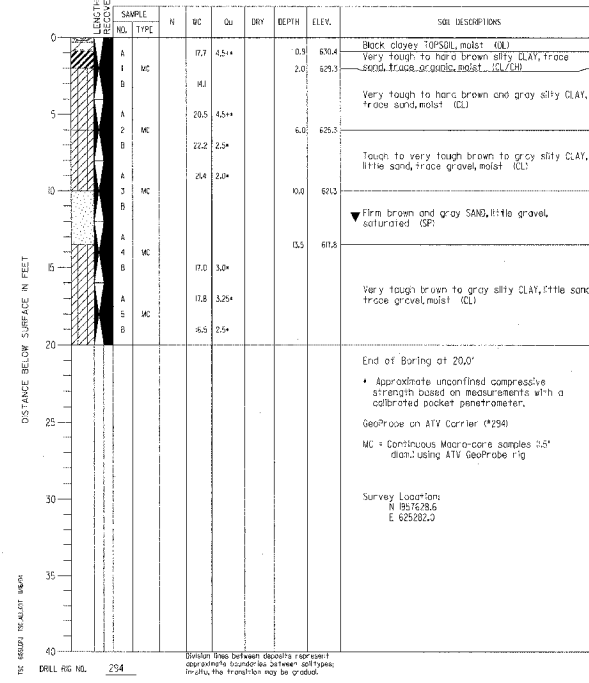
PROJECT: Rand Park Flood Control, Des Plaines, Illinois  
CLIENT: Ground Engineering Consultants, Inc.  
BORING: DB-4 DATE STARTED: 9-22-04 DATE COMPLETED: 9-22-04 JOB: L-61651  
ELEVATIONS: GROUND SURFACE: 631.9, END OF BORING: 611.9  
WATER LEVEL OBSERVATIONS: WHILE DRILLING: 14.0', AT END OF BORING: 14.0'  
24 HOURS



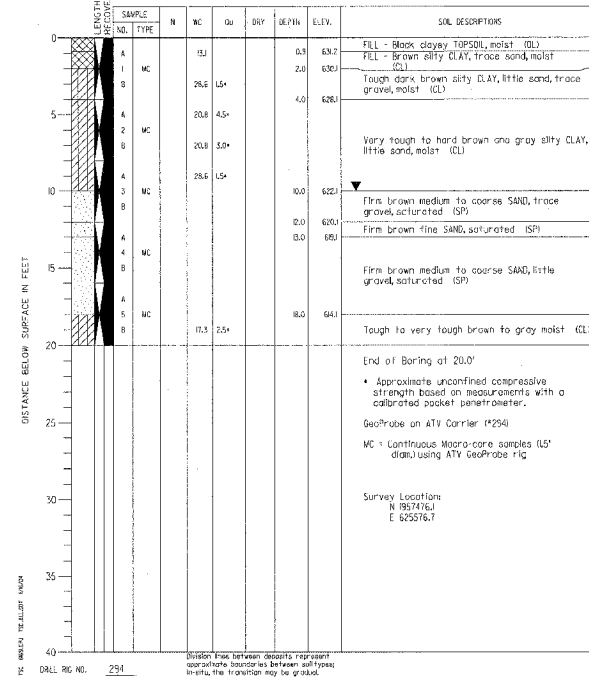
PROJECT: Rand Park Flood Control, Des Plaines, Illinois  
CLIENT: Ground Engineering Consultants, Inc.  
BORING: DB-5 DATE STARTED: 9-23-04 DATE COMPLETED: 9-23-04 JOB: L-61651  
ELEVATIONS: GROUND SURFACE: 631.2, END OF BORING: 611.2  
WATER LEVEL OBSERVATIONS: WHILE DRILLING: 7.0', AT END OF BORING: 7.0'  
24 HOURS



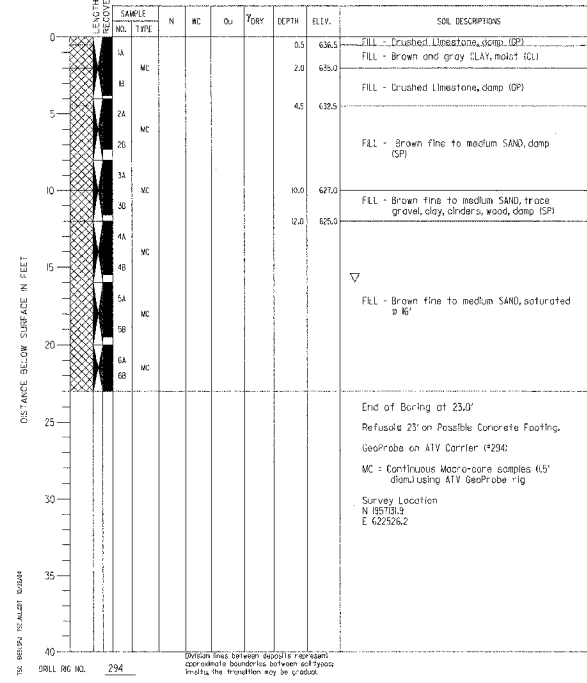
PROJECT: Rand Park Flood Control, Des Plaines, Illinois  
CLIENT: Ground Engineering Consultants, Inc.  
BORING: DB-6 DATE STARTED: 9-23-04 DATE COMPLETED: 9-23-04 JOB: L-61651  
ELEVATIONS: GROUND SURFACE: 631.3, END OF BORING: 611.3  
WATER LEVEL OBSERVATIONS: WHILE DRILLING: 12.0', AT END OF BORING: 12.0'  
24 HOURS



PROJECT: Rand Park Flood Control, Des Plaines, Illinois  
CLIENT: Ground Engineering Consultants, Inc.  
BORING: DB-7 DATE STARTED: 9-23-04 DATE COMPLETED: 9-23-04 JOB: L-61651  
ELEVATIONS: GROUND SURFACE: 632.1, END OF BORING: 612.1  
WATER LEVEL OBSERVATIONS: WHILE DRILLING: 10.0', AT END OF BORING: 10.0'  
24 HOURS



PROJECT: Rand Park Flood Control, Des Plaines, Illinois  
CLIENT: Ground Engineering Consultants, Inc.  
BORING: DB-8 DATE STARTED: 9-9-04 DATE COMPLETED: 9-9-04 JOB: L-61651  
ELEVATIONS: GROUND SURFACE: 637.0, END OF BORING: 617.0  
WATER LEVEL OBSERVATIONS: WHILE DRILLING: 16.0', AT END OF BORING: 16.0'  
24 HOURS



DESIGNED BY: \_\_\_\_\_  
CHECKED BY: \_\_\_\_\_  
DRAWN BY: \_\_\_\_\_

01/30/2006 10:27:14 AM P:\P60003332\Civil\SH1\02CSB-05.sht