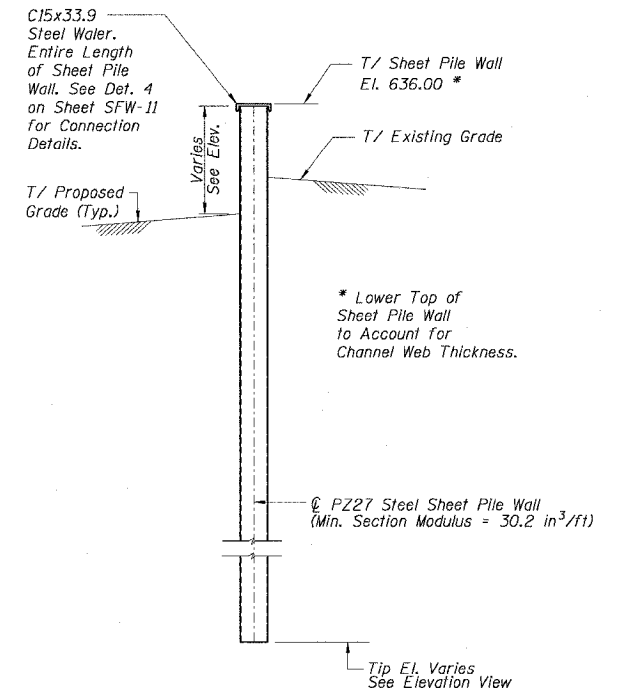
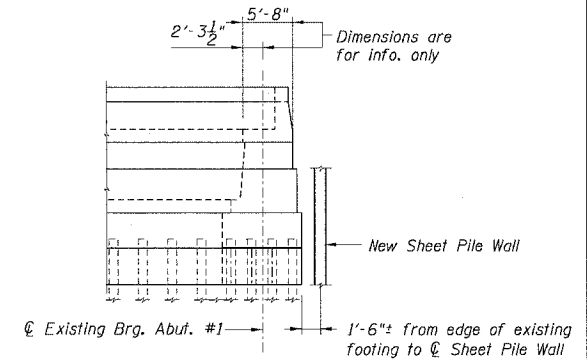


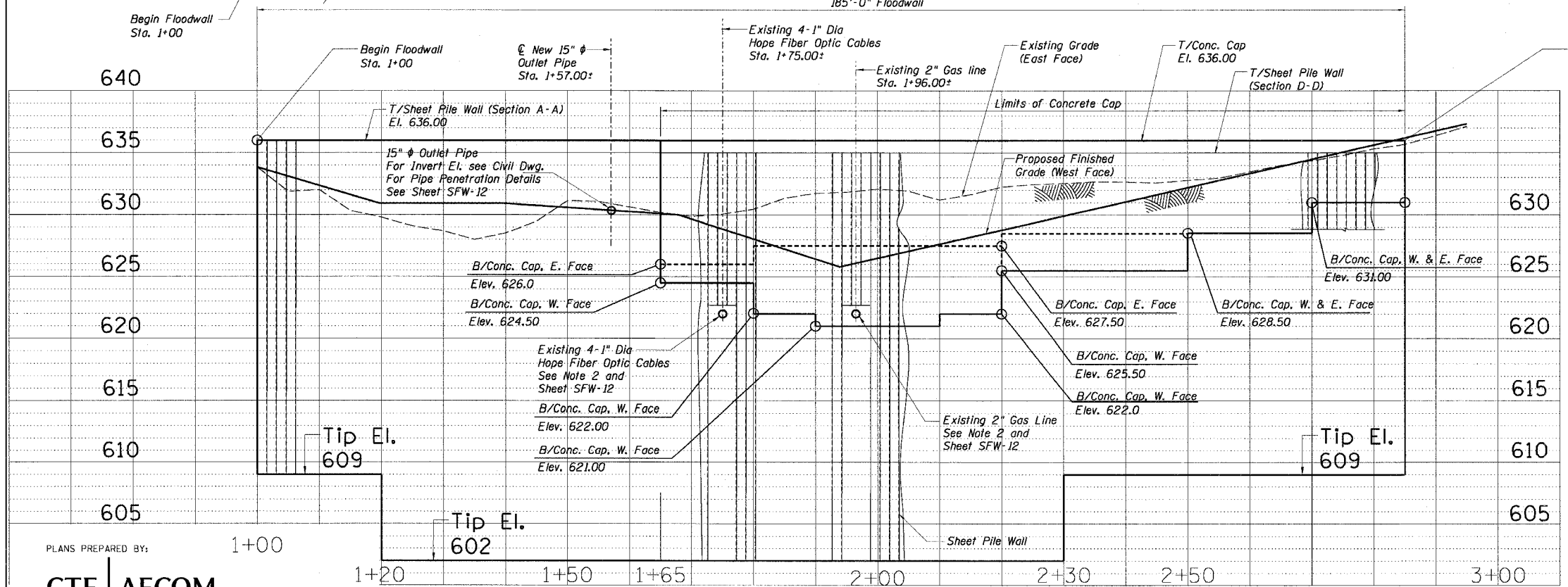
PLAN



SECTION A-A



SECTION C-C



PROFILE GRADE
CAMPGROUND ROAD FLOODWALL

NOTES:

- See Detail 1 on SFW-10 for a similar joint between Bike Trail Support Wall and Existing Retaining Wall.
- The location and depth of fiber optic cables and gas line are approximate. The Contractor shall locate the cables and gas line before beginning work on Sheet Pile Retaining wall and shall avoid damaging cable. Sheet piling shall be driven to 18" clear of cable and gas line vertically and horizontally. City of Des Plaines and Utilities must be contacted before any work begins around gas main or fiber optic cables. City of Des Plaines shall coordinate work between the Utilities.
- Provide steel walers and connections at locations shown in the Plan. Cost of walers and connections is considered included with steel sheet piling.
- Union Pacific Railroad must be contacted and work must be coordinated with this Agency before performing any work near railroad tracks.
- For Floodwall Details see SFW Sheets.

REVISION	
DATE	DESCRIPTION

LEGEND:
 — West Face (T/Ground)
 - - - East Face (T/Ground)

PLANS PREPARED BY:
CTE | AECOM

CTE
 303 East Wacker Drive, Suite 600, Chicago, Illinois 60601-5276
 T 312.938.0300 F 312.938.1109 www.cte.aecom.com

SCALE: NONE
SCR-1 FR-416

07/31/2006 08:49:53 AM p:\p60003332\struct\shf\035095-SCR-1.sht

DESIGNED BY: GEC/DPV
 DRAWN BY: RJ/EMT
 CHECKED BY: GEC/DPV
 CHECKED BY: DPV