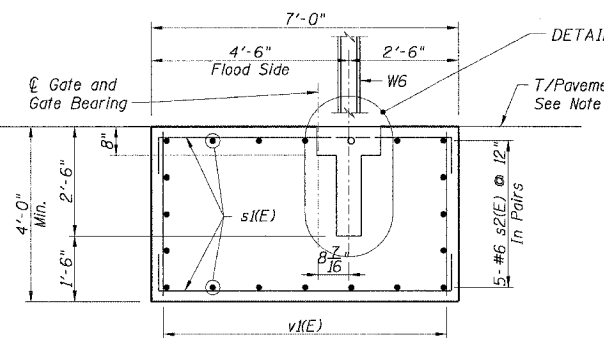
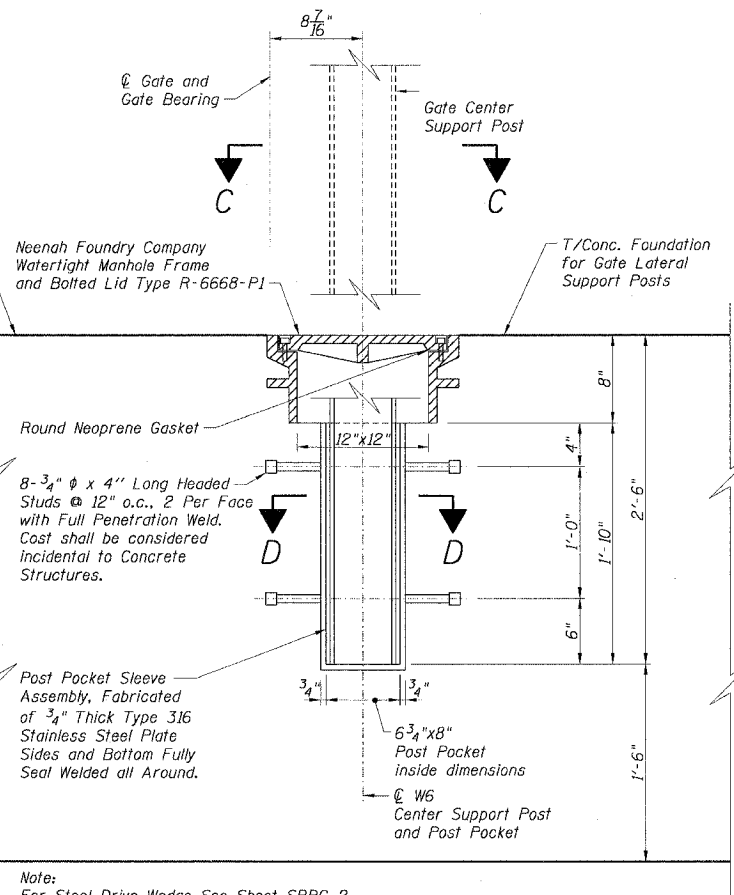


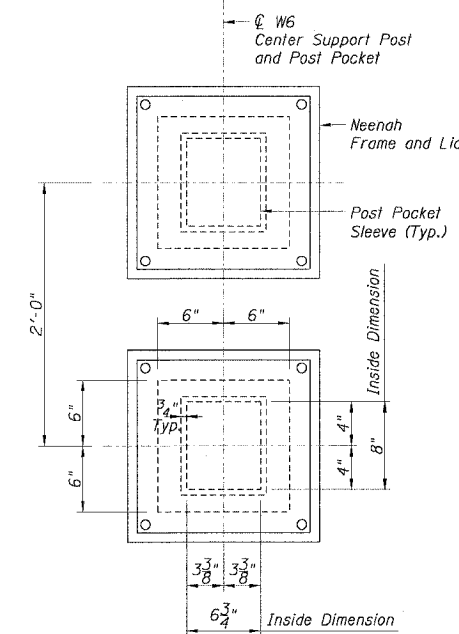
PLAN



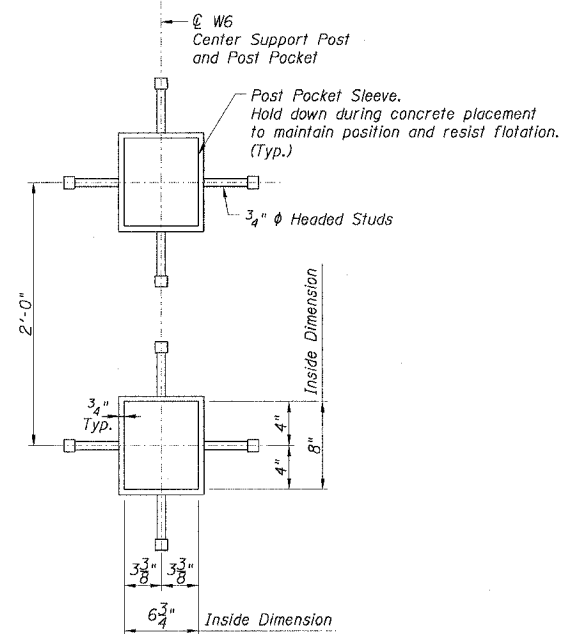
SECTION A-A



DETAIL B



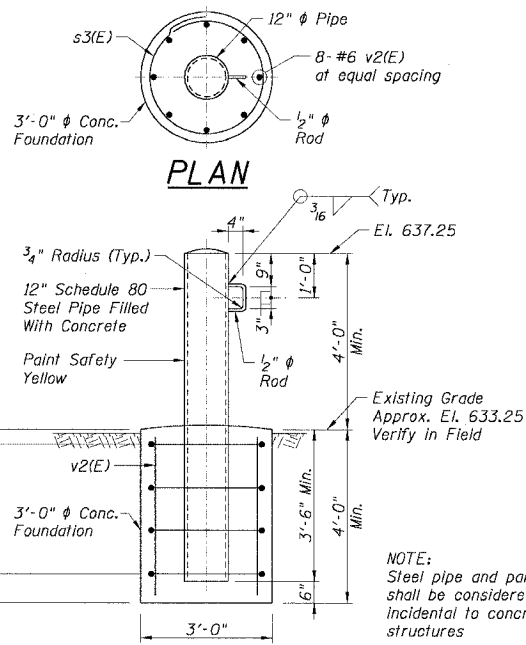
TOP VIEW C-C



SECTION D-D

Notes:  
For Steel Drive Wedge See Sheet SRBC-2.

GATE CENTER SUPPORT FOUNDATION  
(2 THUS)

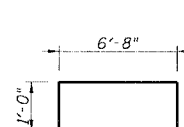


ELEVATION  
GATE LOCKING STRUCTURE  
(4 THUS)

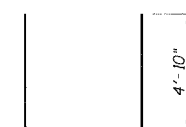
BILL OF MATERIAL

Bar	No.	Size	Length	Shape
s1(E)	56	#6	8'-8"	U
s2(E)	20	#6	16'-4"	U
s3(E)	16	#4	10'-6"	O
v1(E)	56	#6	3'-7"	—
v2(E)	32	#6	3'-7"	—

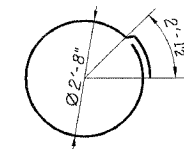
Reinforcement bars designated (E) shall be epoxy coated.



BAR s1(E)



BAR s2(E)



BAR s3(E)

NOTES:

- Assumed Net Design Soil Bearing Pressure = 2000 Psf. Verify in field with Independent Geotechnical Engineer.
- Backfill around structures with low plasticity silty clay placed in 9" loose layers and compacted to 90% ASTM D1557.
- Pavement removal shall be in accordance with Section 440 of the Standard Specifications and shall include saw cutting of the Existing Pavement.
- Gate Center Support Foundation and Gate Locking Structures are included in the pay items for the Rand Road Flood Gate and the Ballard Road Flood Gate and will not be measured for payment separately.

REVISION	
DATE	DESCRIPTION

PLANS PREPARED BY:  
**CTE | AECOM**

CTE  
303 East Wacker Drive, Suite 600, Chicago, Illinois 60601-6276  
T 312.938.0300 F 312.938.1109 www.cte.aecom.com

SCALE: NONE

**SRBC-5** FR-416