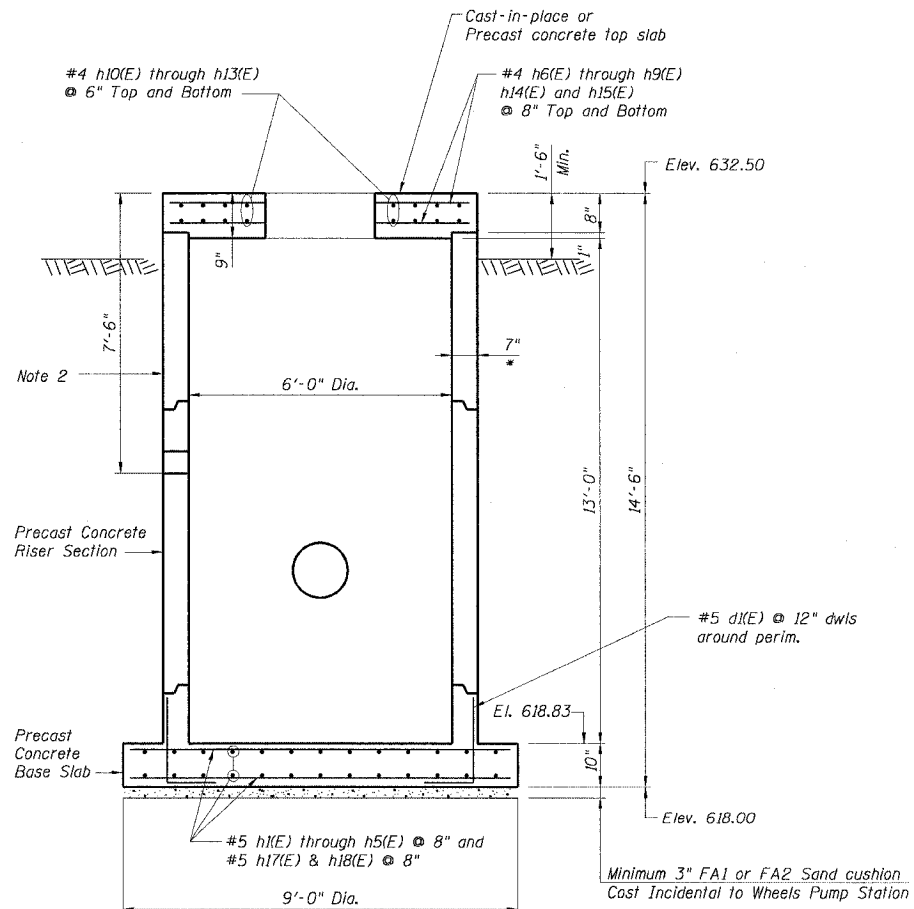


**BILL OF MATERIAL**

Bar	No.	Size	Length	Shape	
d1(E)	28	#5	5'-0"		
h1(E)	8	#5	3'-4"		
h2(E)	8	#5	5'-6"		
h3(E)	8	#5	6'-10"		
h4(E)	8	#5	7'-8"		
h5(E)	8	#5	8'-3"		
h6(E)	8	#4	1'-4"		
h7(E)	8	#4	1'-8"		
h8(E)	8	#4	1'-11"		
h9(E)	8	#4	2'-0"		
h10(E)	4	#4	2'-11"		
h11(E)	4	#4	4'-5"		
h12(E)	4	#4	5'-5"		
h13(E)	4	#4	6'-0"		
h14(E)	4	#4	2'-0"		
h15(E)	4	#4	4'-3"		
h16(E)	8	#4	2'-6"		
h17(E)	8	#5	8'-6"		
h18(E)	4	#5	8'-8"		
Wheels Pump Station Structure				L. Sum	1



- NOTES:**
- (\*)- Indicates Dimensions to be verified by Precaster.
  - Risers Sections and Seals in Accordance with Section 602 of the Standard Specifications and the Special Provision for the Wheels Pump Station Structure.
  - Reinforcement bars designated (E) shall be Epoxy Coated.
  - Maintain excavation dewatering to minimum 2 feet below bottom of excavation until top slab and all backfill around Structure is in place.
  - For pipe inverts and additional information, See Sheet M-1.

**REVISION**

DATE	DESCRIPTION

PLANS PREPARED BY:  
**CTE | AECOM**  
CTE  
303 East Wacker Drive, Suite 600, Chicago, Illinois 60601-5276  
T 312.938.0300 F 312.938.1109 www.cte.aecom.com

01/31/2006 08:51:17 AM p:\p60003332\struct\shf\03s\41-SWPS-1.sht

DESIGNED BY: AAG  
DRAWN BY: RJ  
CHECKED BY: BJM/AAG  
CHECKED BY: BJM/AAG