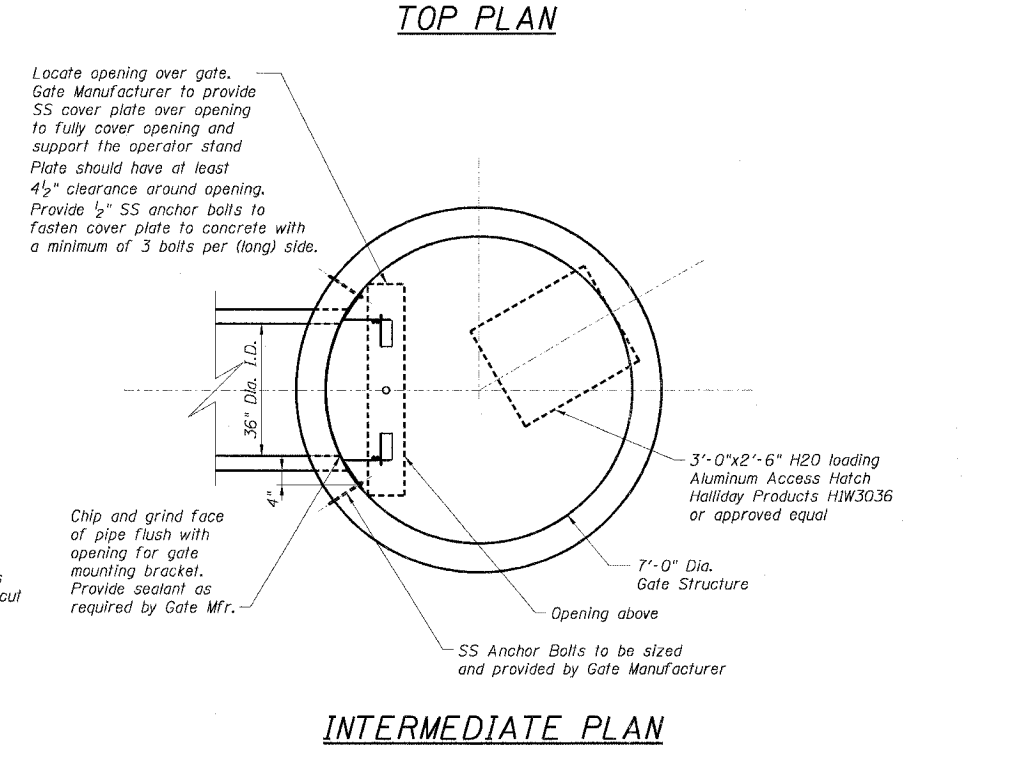
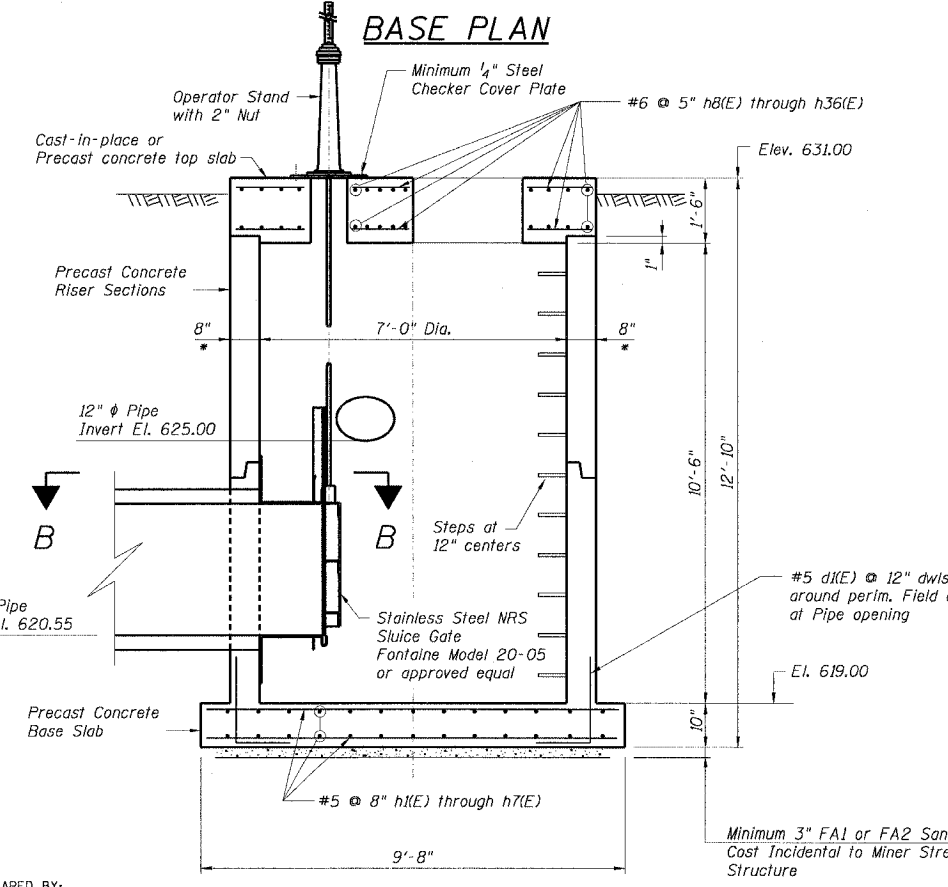


**BILL OF MATERIAL**

Bar	No.	Size	Length	Shape	
d1(E)	28	#5	5'-0"		
h1(E)	10	#5	4'-6"		
h2(E)	8	#5	6'-6"		
h3(E)	8	#5	7'-8"		
h4(E)	8	#5	8'-4"		
h5(E)	8	#5	8'-10"		
h6(E)	8	#5	9'-2"		
h7(E)	8	#5	9'-3"		
h8(E)	10	#6	2'-4"		
h9(E)	6	#6	4'-2"		
h10(E)	6	#6	5'-3"		
h11(E)	6	#6	6'-1"		
h12(E)	2	#6	2'-8"		
h13(E)	4	#6	2'-0"		
h14(E)	2	#6	1'-3"		
h15(E)	4	#6	4'-0"		
h16(E)	2	#6	1'-8"		
h17(E)	4	#6	1'-4"		
h18(E)	10	#6	1'-7"		
h19(E)	5	#6	2'-3"		
h20(E)	2	#6	7'-9"		
h21(E)	4	#6	7'-8"		
h22(E)	2	#6	7'-7"		
h23(E)	2	#6	2'-7"		
h24(E)	6	#6	2'-9"		
h25(E)	4	#6	2'-11"		
h26(E)	2	#6	3'-8"		
h27(E)	2	#6	4'-5"		
h28(E)	2	#6	2'-4"		
h29(E)	2	#6	5'-3"		
h30(E)	2	#6	5'-1"		
h31(E)	2	#6	4'-10"		
h32(E)	4	#6	4'-7"		
h33(E)	4	#6	1'-0"		
h34(E)	4	#6	1'-1"		
h35(E)	6	#6	1'-2"		
h36(E)	2	#6	1'-10"		
h37(E)	4	#6	7'-10"		
h38(E)	6	#5	4'-0"		
h39(E)	4	#6	5'-0"		
Minor Street Gate Structure				L. Sum	1



**NOTES:**

- (\*) - Indicates dimensions to be verified by precaster. Coordinate with shop drawings from Gate Manufacturer. Actual location and size of opening through slab shall be adequate to remove gate slide and shall be centered on gate stem.
- Riser sections shall be 7'-0" inside diameter precast reinforced concrete pipe, in accordance with ASTM C478, with wall thickness and reinforcing conforming to minimum requirements of ASTM C76 pipe, Class III, Wall B. At Contractor's option, Contractor may provide concrete pipe riser sections to meet the requirements of ASTM C76 pipe, Class III, Wall B. Pipe riser sections must have an inner and outer cage of circular reinforcement. All other requirements must conform to Section 602 of the Standard Specifications and the Special Provision for the Minor Street Gate Structure.
- Reinforcement bars designated (E) shall be Epoxy Coated.
- Maintain excavation dewatering to minimum 2 feet below the bottom of the excavation until top slab and all backfill around the structure is in place.
- Prior to Fabrication of Manhole, Field verify Structure location to avoid Base Slab conflict with Floodwall.

REVISION	
DATE	DESCRIPTION

PLANS PREPARED BY:  
**CTE | AECOM**

CTE  
303 East Wacker Drive, Suite 600, Chicago, Illinois 60601-5276  
T 312.938.0300 F 312.938.1109 www.cte.aecom.com

SCALE: NONE

**SGS-1** FR-416

01/31/2006 08:51:18 AM P:\p06003332\struct\shh\03s142-505-1.shh

DESIGNED BY: AAC/KHH  
DRAWN BY: RJ  
CHECKED BY: BJM/AG  
CHECKED BY: BJM/AG