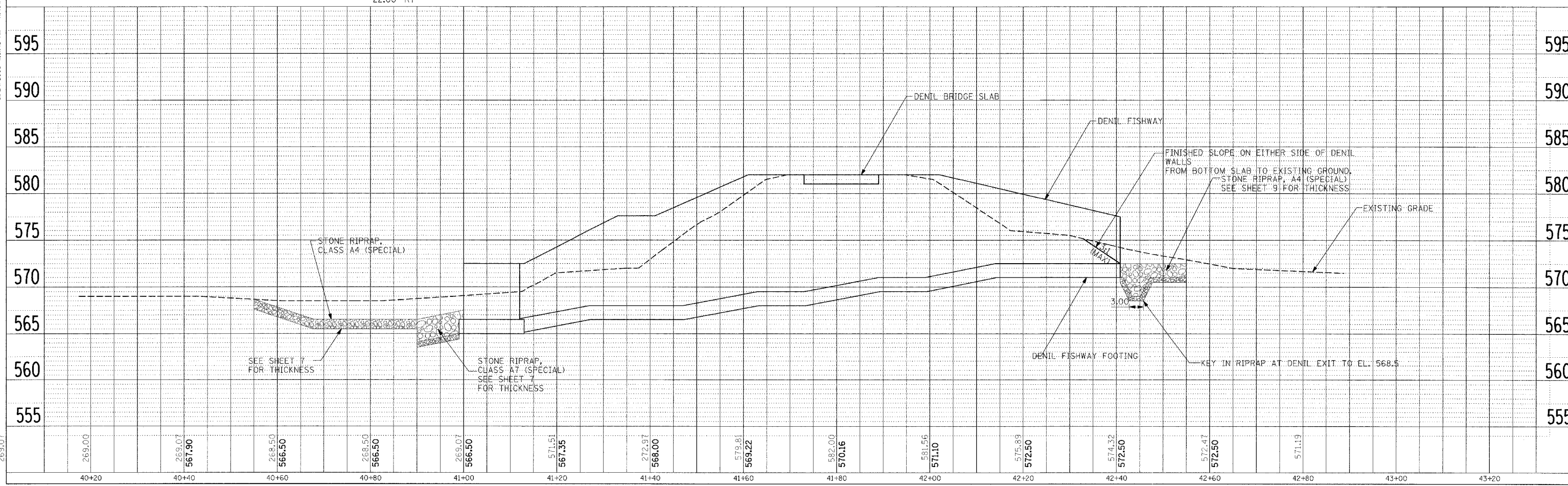
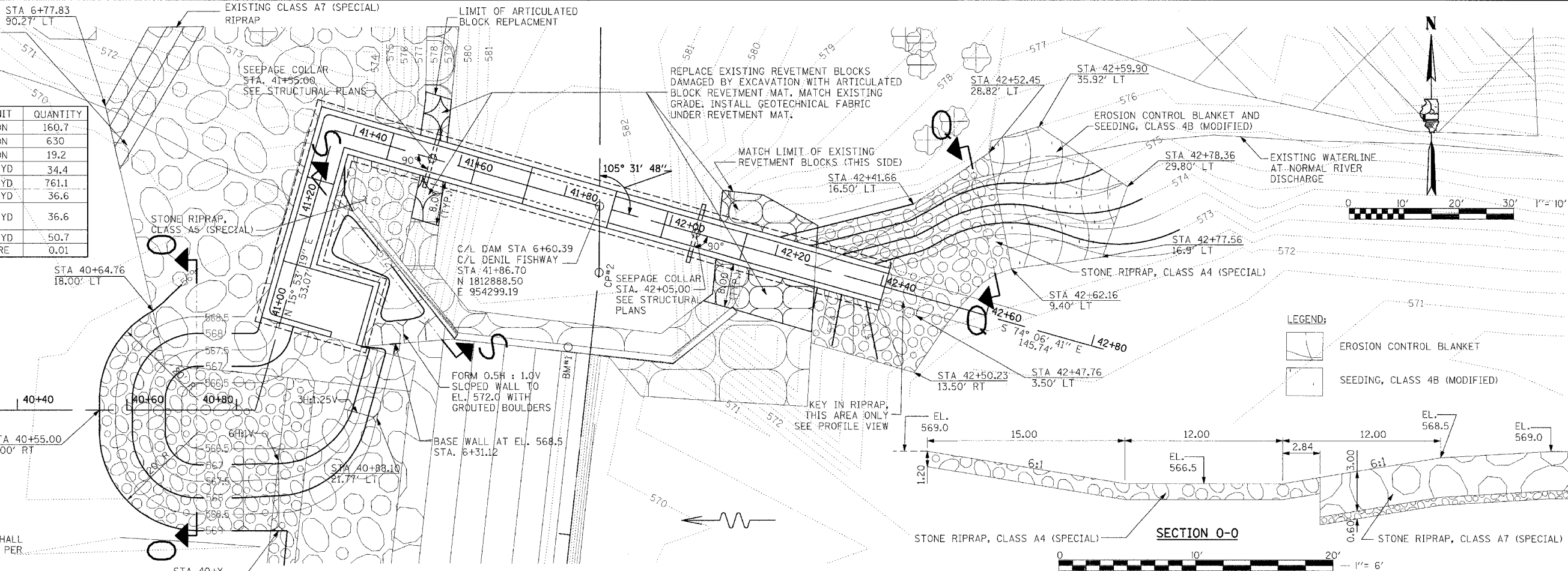


STONE RIPRAP, CLASS A7 (SPECIAL)
TOP OF RIPRAP TO MATCH EXISTING GROUND
FOR ALL ELEVATIONS GREATER THAN 568.5;
FOR ELEVATIONS LESS THAN 568.5 - SEE
SHEET 7

BILL OF MATERIALS

ITEM	UNIT	QUANTITY
STONE RIPRAP, CLASS A4 (SPECIAL)	TON	160.7
STONE RIPRAP, CLASS A7 (SPECIAL)	TON	630
STONE RIPRAP, CLASS A5 (SPECIAL)	TON	19.2
GROUTED BOULDERS	CU YD	34.4
EARTH EXCAVATION	CU YD	761.1
ARTICULATED BLOCK REVETMENT MAT	SQ YD	36.6
GEOTECHNICAL FABRIC FOR GROUND STABILIZATION	SQ YD	36.6
EROSION CONTROL BLANKET	SQ YD	50.7
SEEDING, CLASS 4B (MODIFIED)	ACRE	0.01

- NOTE:
- BILL OF MATERIALS INCLUDES ONLY QUANTITIES GREATER THAN STA. 6+22.80, EXCEPT THAT EXCAVATION AND STONE RIPRAP, CLASS A4 (SPECIAL) DOWNSTREAM OF STA. 40+83.43 ARE ALSO INCLUDED.
 - SLOPED WALL OF GROUTED BOULDERS WILL BE PAID FOR AT THE CONTRACT UNIT PRICE PER CUBIC YARD FOR "GROUTED BOULDERS"
 - ARTICULATED BLOCK REVETMENT MAT SHALL MATCH ADJACENT MAT IF POSSIBLE. MAT/BLOCKS MAY BE SALVAGED FROM THE REMOVAL AREAS AND REUSED IF IN GOOD CONDITION.
 - FOR SECTIONS Q-Q AND S-S, SEE SHEET 9
 - REMOVAL OF EXISTING REVETMENT BLOCKS WILL NOT BE PAID FOR SEPARATELY, BUT SHALL BE INCLUDED IN THE CONTRACT UNIT PRICE PER CUBIC YARD FOR "STRUCTURE EXCAVATION"



DESIGNED BY: NDD
DRAWN BY: MEF
CHECKED BY: BGC
CHECKED BY: BGC