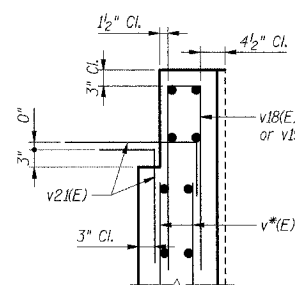
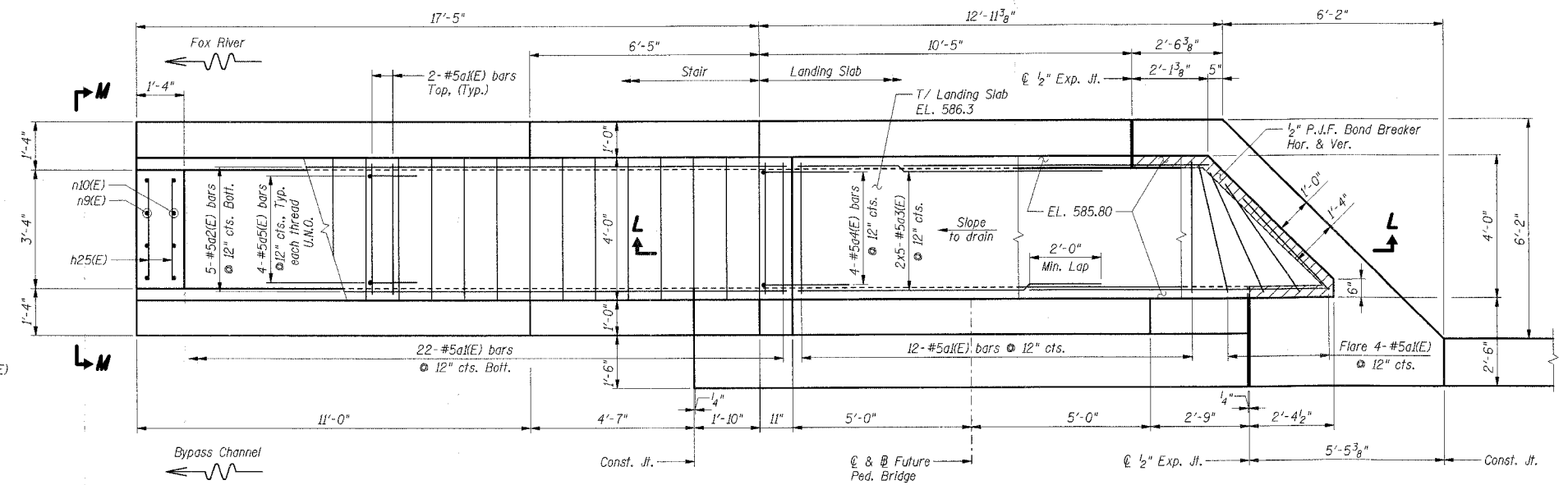


SECTION M-M

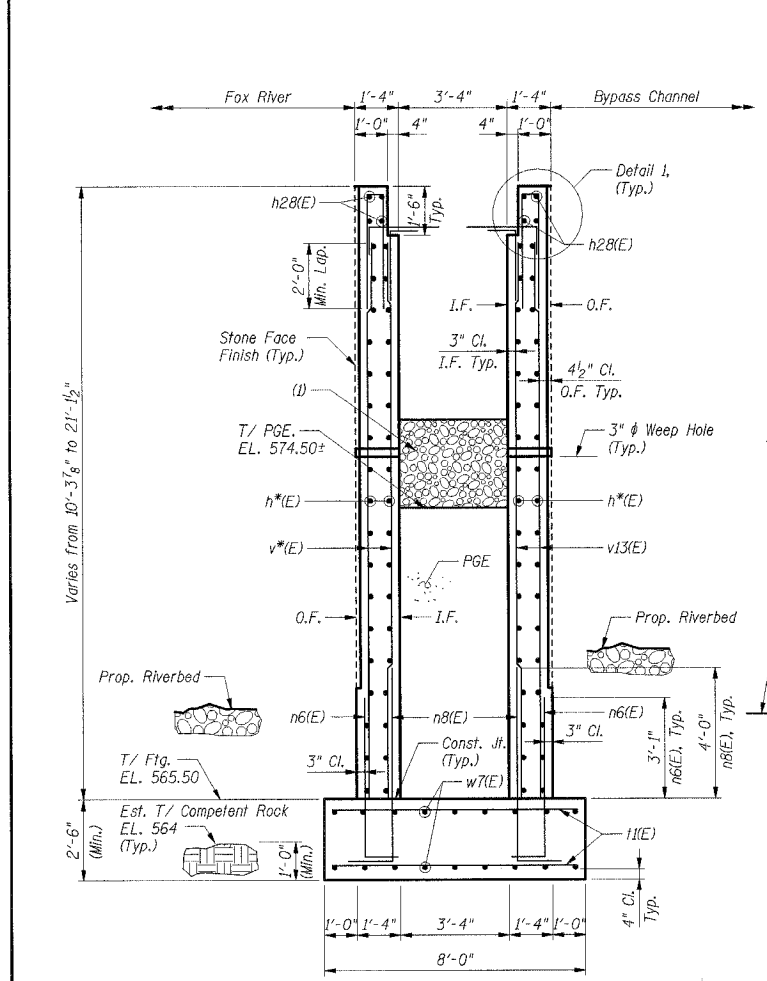


DETAIL 1

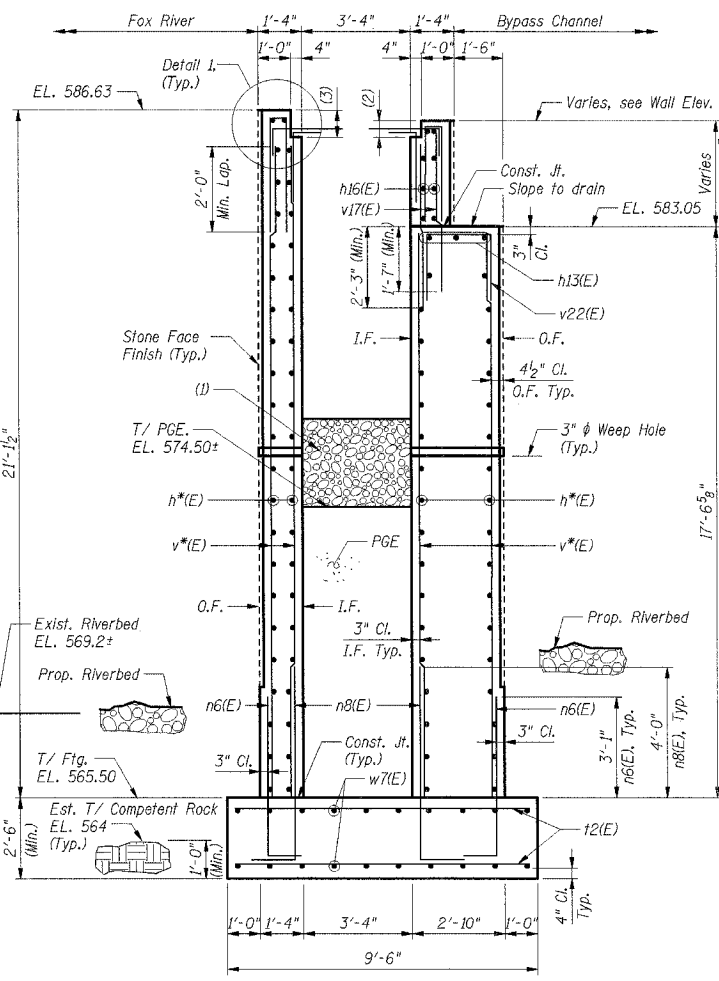


STAIR & LANDING SLAB DETAIL

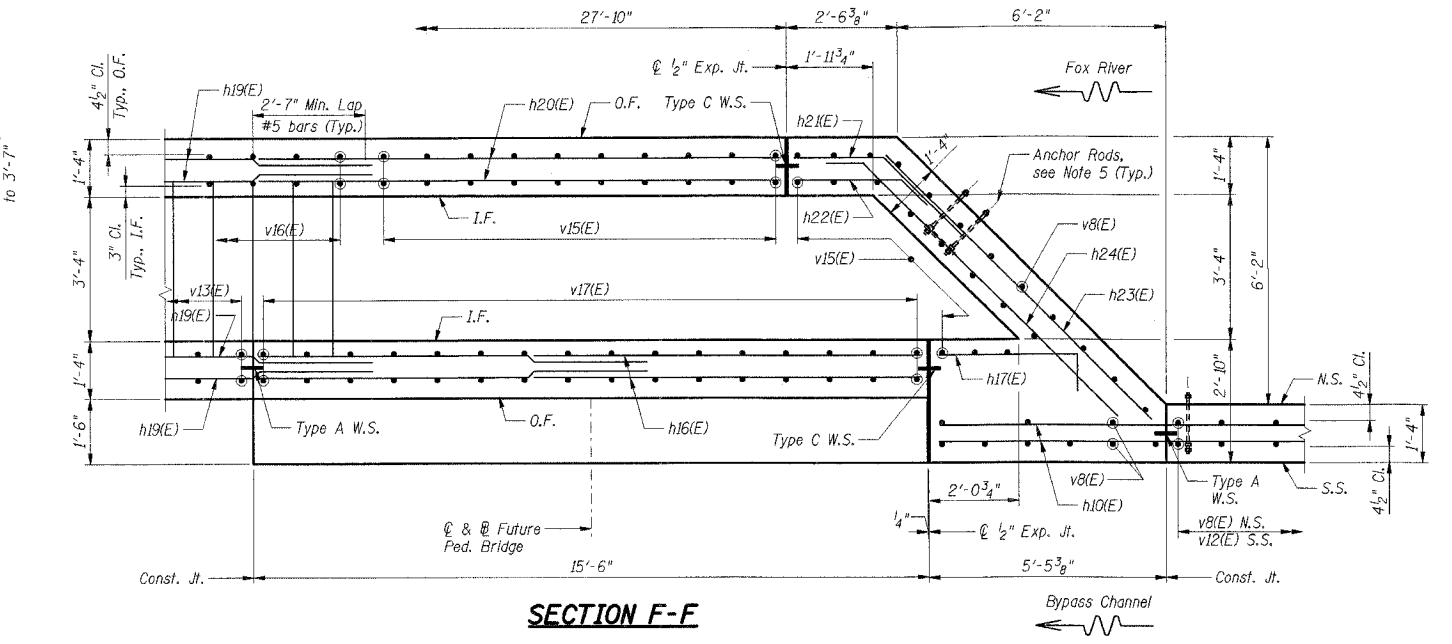
(2) Var. from 6" at landing to 1'-6" at stairs.
(3) Var. from 10" at landing to 1'-6" at stairs.



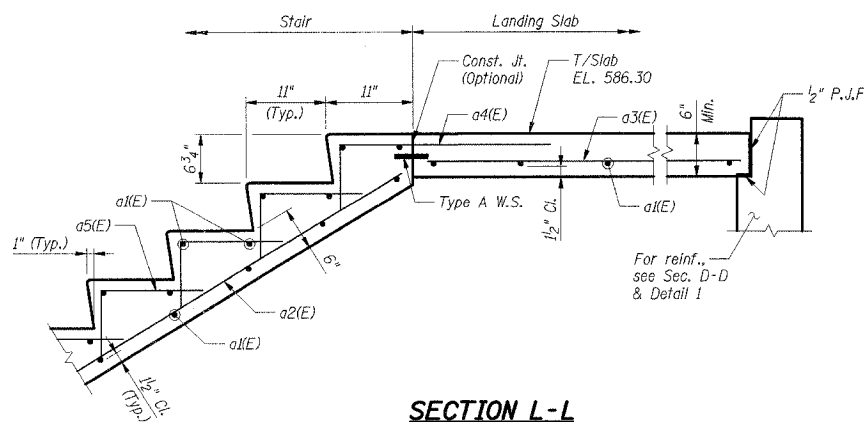
SECTION C-C



SECTION D-D



SECTION F-F



SECTION L-L

- Notes:**
1. Reinforcement bars designated (E) shall be epoxy coated.
 2. I.F. denotes Inside Face.
 3. O.F. denotes Outside Face.
 4. N.S. denotes North Side.
 5. S.S. denotes South Side.
 6. W.S. denotes Waterstop.
 7. Work this drawing with Drwgs. S8 & S9.
 8. For Expansion Joint, Waterstop, and Anchor Rod details, see Drwg. S2.
 9. For Embedded Anchor Rod locations see Drwg. S9.
 10. For Stone Face Finish, see Drwg. S12.
 11. For Bar List & Bill of Material, see Drwg. S13.

(1) 3' x 3' x 3'-4" cube of CA-5 or CA-7 Coarse Aggregate at each weep hole completely enclosed in a fabric envelope according to Article 502.10 of the Standard Specifications. Cost included with Porous Granular Embankment.