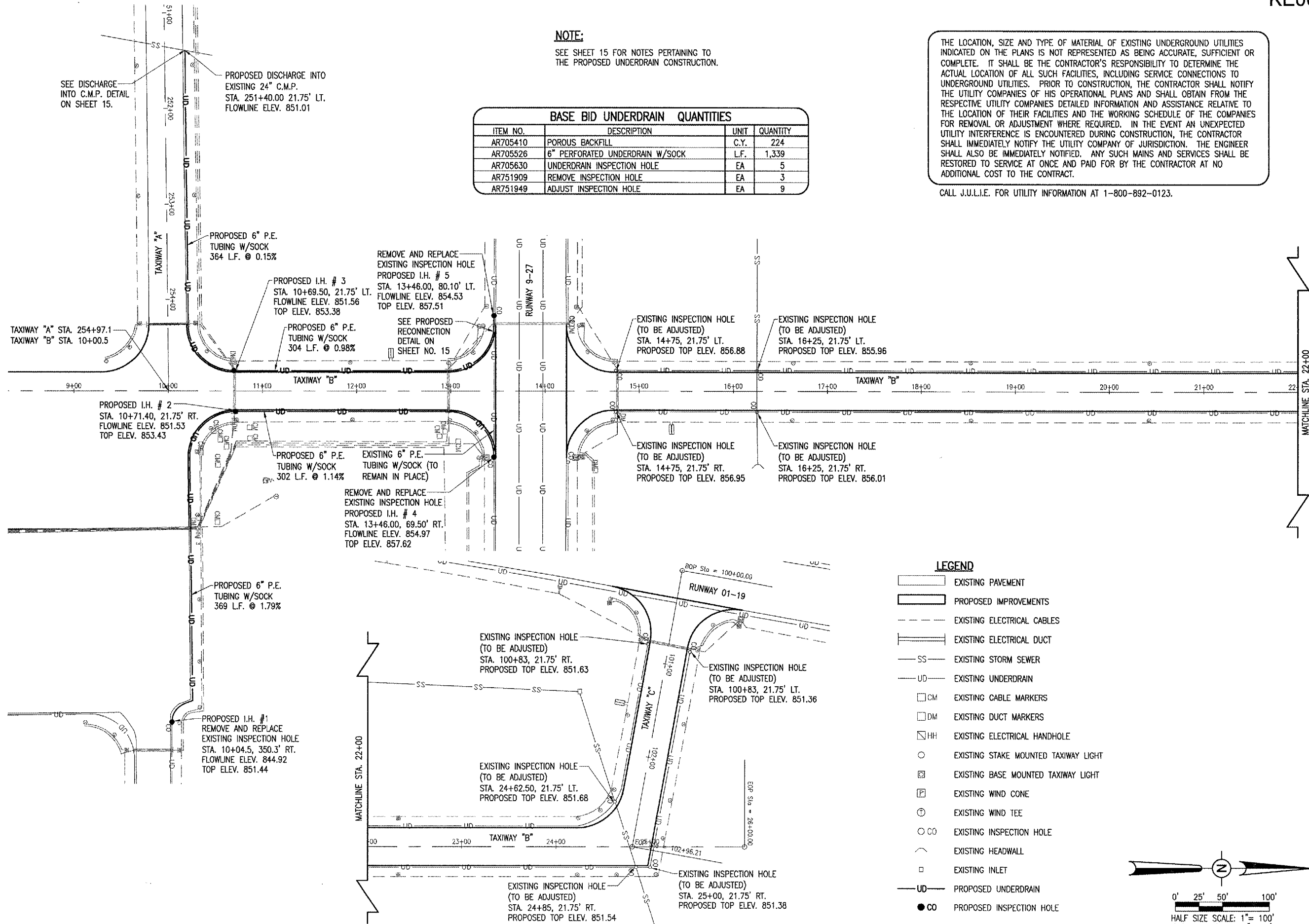


NOTE:
SEE SHEET 15 FOR NOTES PERTAINING TO THE PROPOSED UNDERDRAIN CONSTRUCTION.

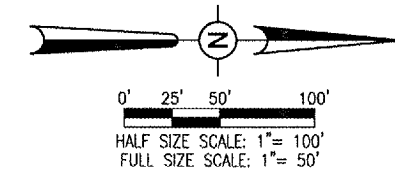
BASE BID UNDERDRAIN QUANTITIES			
ITEM NO.	DESCRIPTION	UNIT	QUANTITY
AR705410	POROUS BACKFILL	C.Y.	224
AR705526	6" PERFORATED UNDERDRAIN W/SOCK	L.F.	1,339
AR705630	UNDERDRAIN INSPECTION HOLE	EA	5
AR751909	REMOVE INSPECTION HOLE	EA	3
AR751949	ADJUST INSPECTION HOLE	EA	9

THE LOCATION, SIZE AND TYPE OF MATERIAL OF EXISTING UNDERGROUND UTILITIES INDICATED ON THE PLANS IS NOT REPRESENTED AS BEING ACCURATE, SUFFICIENT OR COMPLETE. IT SHALL BE THE CONTRACTOR'S RESPONSIBILITY TO DETERMINE THE ACTUAL LOCATION OF ALL SUCH FACILITIES, INCLUDING SERVICE CONNECTIONS TO UNDERGROUND UTILITIES. PRIOR TO CONSTRUCTION, THE CONTRACTOR SHALL NOTIFY THE UTILITY COMPANIES OF HIS OPERATIONAL PLANS AND SHALL OBTAIN FROM THE RESPECTIVE UTILITY COMPANIES DETAILED INFORMATION AND ASSISTANCE RELATIVE TO THE LOCATION OF THEIR FACILITIES AND THE WORKING SCHEDULE OF THE COMPANIES FOR REMOVAL OR ADJUSTMENT WHERE REQUIRED. IN THE EVENT AN UNEXPECTED UTILITY INTERFERENCE IS ENCOUNTERED DURING CONSTRUCTION, THE CONTRACTOR SHALL IMMEDIATELY NOTIFY THE UTILITY COMPANY OF JURISDICTION. THE ENGINEER SHALL ALSO BE IMMEDIATELY NOTIFIED. ANY SUCH MAINS AND SERVICES SHALL BE RESTORED TO SERVICE AT ONCE AND PAID FOR BY THE CONTRACTOR AT NO ADDITIONAL COST TO THE CONTRACT.

CALL J.U.L.I.E. FOR UTILITY INFORMATION AT 1-800-892-0123.



- LEGEND**
- EXISTING PAVEMENT
 - PROPOSED IMPROVEMENTS
 - EXISTING ELECTRICAL CABLES
 - EXISTING ELECTRICAL DUCT
 - EXISTING STORM SEWER
 - EXISTING UNDERDRAIN
 - EXISTING CABLE MARKERS
 - EXISTING DUCT MARKERS
 - EXISTING ELECTRICAL HANDHOLE
 - EXISTING STAKE MOUNTED TAXIWAY LIGHT
 - EXISTING BASE MOUNTED TAXIWAY LIGHT
 - EXISTING WIND CONE
 - EXISTING WIND TEE
 - EXISTING INSPECTION HOLE
 - EXISTING HEADWALL
 - EXISTING INLET
 - PROPOSED UNDERDRAIN
 - PROPOSED INSPECTION HOLE

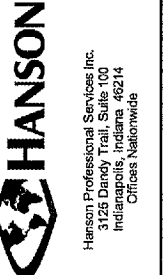


DATE	REVISION	BY

KEWANEE MUNICIPAL AIRPORT
KEWANEE, HENRY COUNTY, ILLINOIS

IL PROJ.: E21-3533 A.I.P. PROJ.: 3-17-0058-810

HD Project No. 810-06TXXD 0800	RAW	12/20/05
Drawn: R-13.DRN.DWG	BAK	12/20/05
Scale: 1"=50'	CAH	xx/xx/xx
Date: 12/20/05		



OVERLAY TXY & APRON
CONSTRUCT VAULT
PROPOSED
DRAINAGE
PLAN

JAN 18, 2006 11:27 PM RAW
I:\AIRPORTS\KEWANEE\810-06TXXD\AIRPORT\SHETS\R-13.DRN.DWG - UNDERDRAINS