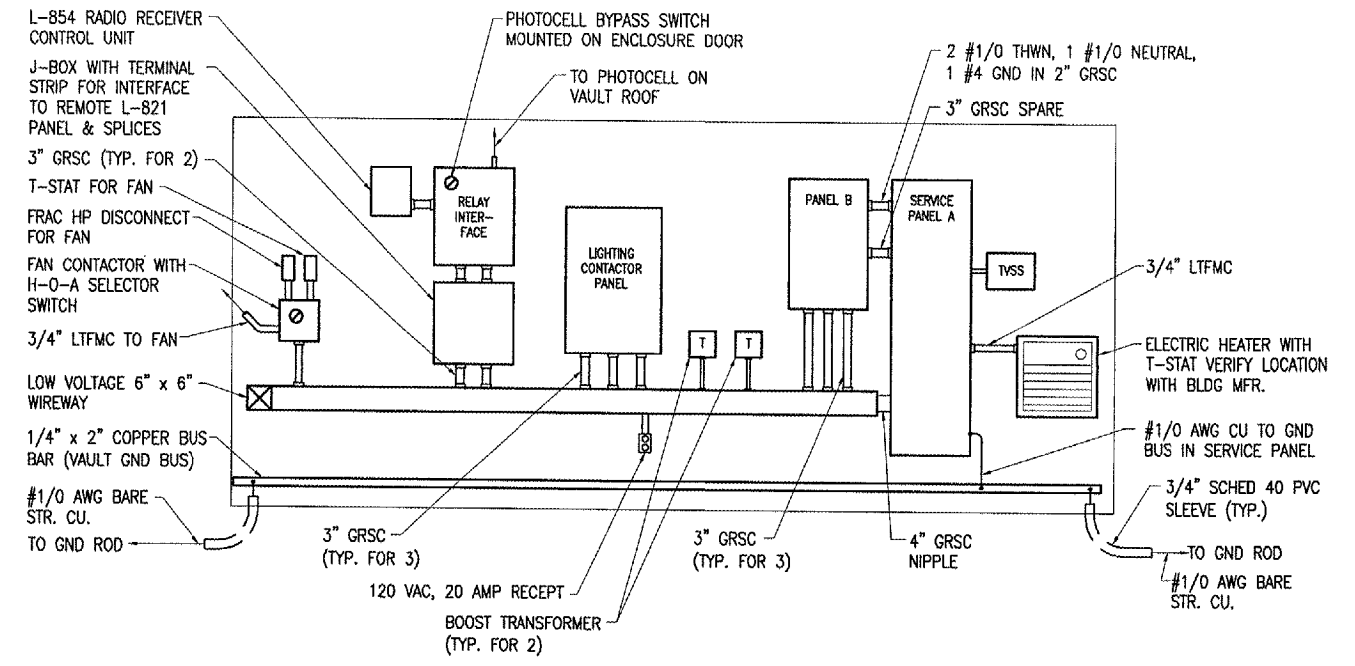
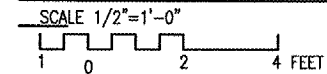
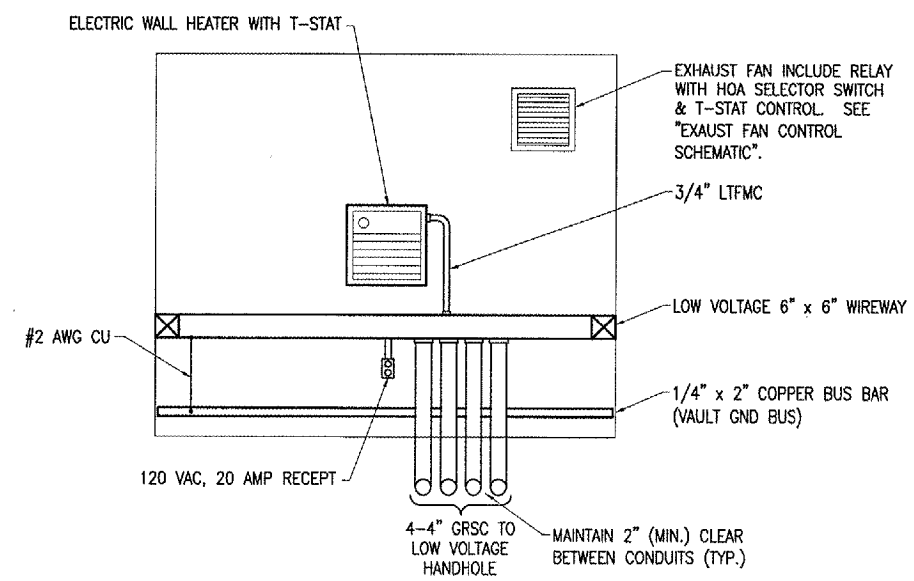
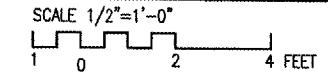


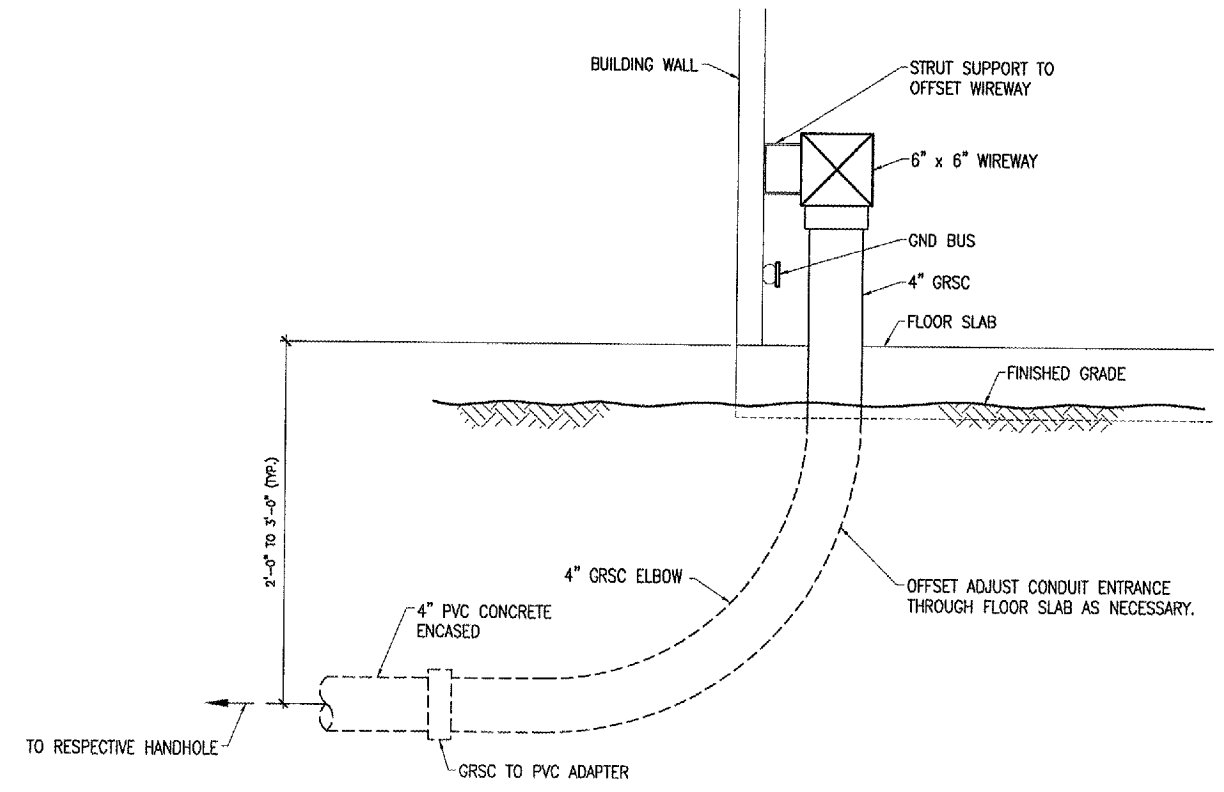
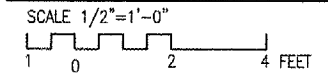
VAULT NORTH WALL ELEVATION



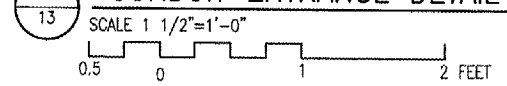
VAULT SOUTH WALL ELEVATION



VAULT EAST WALL ELEVATION



CONDUIT ENTRANCE DETAIL



BY	
REVISION	
DATE	

KEWANEEN MUNICIPAL AIRPORT  
KEWANEEN, HENRY COUNTY, ILLINOIS

A.I.P. PROJ.: 3-17-0059-B10  
IL PROJ.: E21-3533

REL. Project. No.	810-061XYD_0800
Revision	E-201.DWG
Scale	1/2"=1'-0"
Date	04/22/05
LAYOUT	KNL 09/26/05
DRAWN	MW 09/26/05
REVIEWED	LDP 01/17/06



OVERLAY TXY & APRON  
CONSTRUCT VAULT  
PROPOSED  
AIRPORT ELECTRICAL VAULT  
WALL ELEVATIONS

JAN 18, 2006 9:08 AM DWG  
E:\AIRPORTS\KEWANEEN\810-061XYD\AIRPORT\SHEETS\E-201.DWG - Layout1