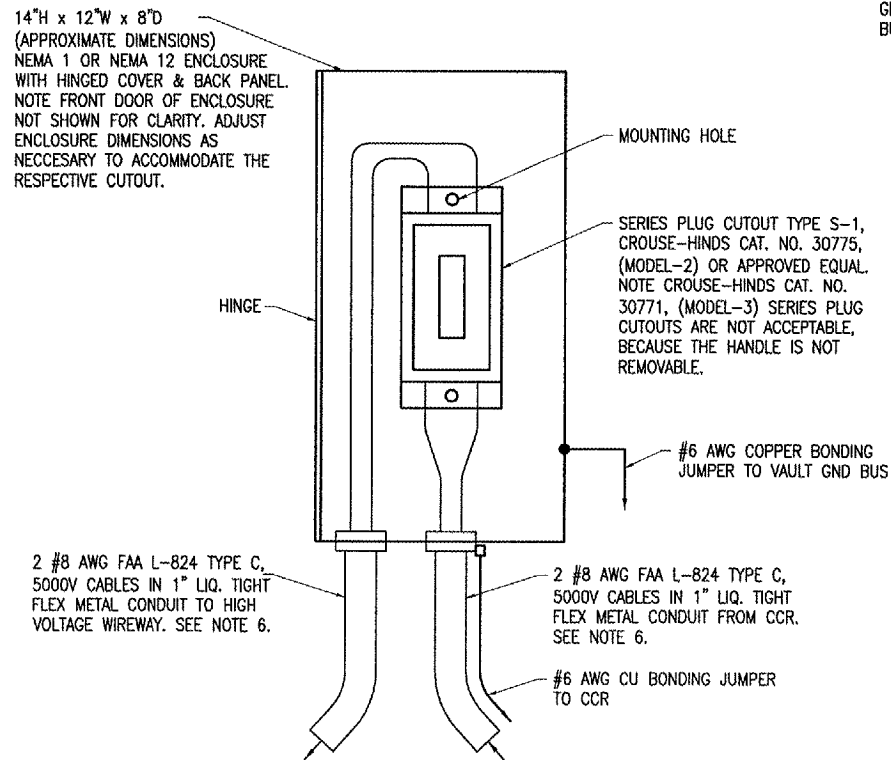


HIGH VOLTAGE WIRING SCHEMATIC



SERIES PLUG CUTOUT MOUNTING DETAIL
(TYPICAL FOR 3)

NOTES

1. PROVIDE PHENOLIC ENGRAVED LEGEND PLATES FOR EACH CONSTANT CURRENT REGULATOR NOTING THE REGULATOR DESIGNATION, THE RUNWAY OR TAXIWAY SERVED AND THE POWER SOURCE AND CIRCUIT NUMBER.
2. EACH PLUG CUTOUT CABINET SHALL BE FURNISHED WITH A PHENOLIC ENGRAVED LEGEND PLATE THAT IDENTIFIES THE RESPECTIVE CIRCUIT OR REGULATOR.
3. PROVIDE PHENOLIC ENGRAVED LEGEND PLATES FOR EACH CUTOUT TO IDENTIFY THE RESPECTIVE CUTOUT INPUT CONNECTION AND THE RESPECTIVE CUTOUT OUTPUT CONNECTION.
4. PROVIDE ADEQUATE WORKING SPACE IN FRONT OF EACH CUTOUT ENCLOSURE TO MEET NEC CLEARANCE REQUIREMENTS.
5. PROVIDE WARNING SIGN ON VAULT DOOR LABELED "DANGER - HIGH VOLTAGE - KEEP OUT" PER THE REQUIREMENTS OF NEC 110.34 (C).
6. LIQUID TIGHT FLEXIBLE METAL CONDUIT AND ASSOCIATED FITTINGS SHALL BE U.L. LISTED TO MEET THE REQUIREMENTS OF NEC 350.6, SUITABLE FOR GROUNDING AND SUNLIGHT RESISTANT. LIQUID TIGHT FLEXIBLE METAL CONDUIT THAT IS USED FOR FLEXIBILITY (INCLUDING CONNECTIONS TO CCR'S & TRANSFORMERS) SHALL REQUIRE AN EXTERNAL BONDING JUMPER OR INTERNAL EQUIPMENT GROUNDING CONDUCTOR PER NEC 350.60. EXTERNAL BONDING JUMPERS USED WITH CCR INSTALLATIONS SHALL BE #6 AWG COPPER (MINIMUM). DO NOT INSTALL LIQUID TIGHT FLEXIBLE METAL CONDUIT THAT IS NOT UL LISTED.

LEGEND

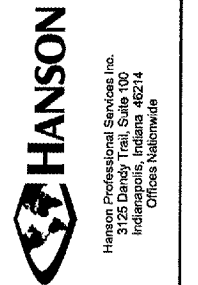
- "I" DENOTES PLUG CUTOUT WITH PLUG INSERTED
- "P" DENOTES PLUG CUTOUT WITH PLUG PULLED
- "CCR" DENOTES CONSTANT CURRENT REGULATOR

REVISION	DATE	BY

Kewanee Municipal Airport
Kewanee, Henry County, Illinois

IL. PROJ.: E71-3533 A.I.P. PROJ.: 3-17-0058-B10

File Name: E-604.DWG	Scale: 04/22/05	Drawn: KNL	Reviewed: LDP
Scale: 04/22/05	Date: 04/22/05	Drawn: MV	Reviewed: LDP
Scale: 04/22/05	Date: 04/22/05	Drawn: LDP	Reviewed: LDP



OVERLAY TXY & APRON
CONSTRUCT VAULT
HIGH VOLTAGE
WIRING SCHEMATIC

JAN 18, 2006 9:49 AM DWG
L:\AIRPORTS\KEWANEE\B10-05TXYD\AIRPORT\SHEETS\E-604.DWG - Work - FLR