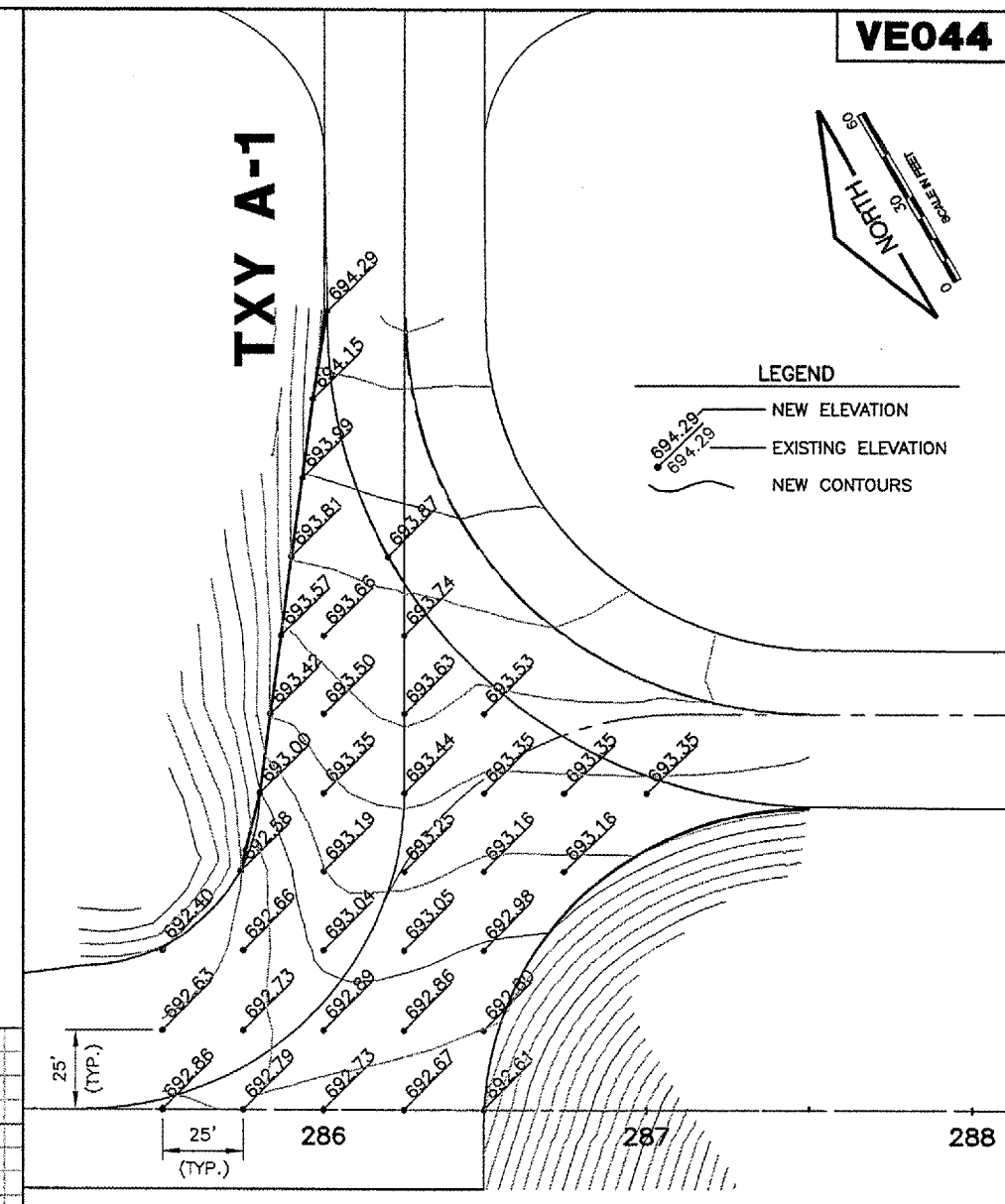
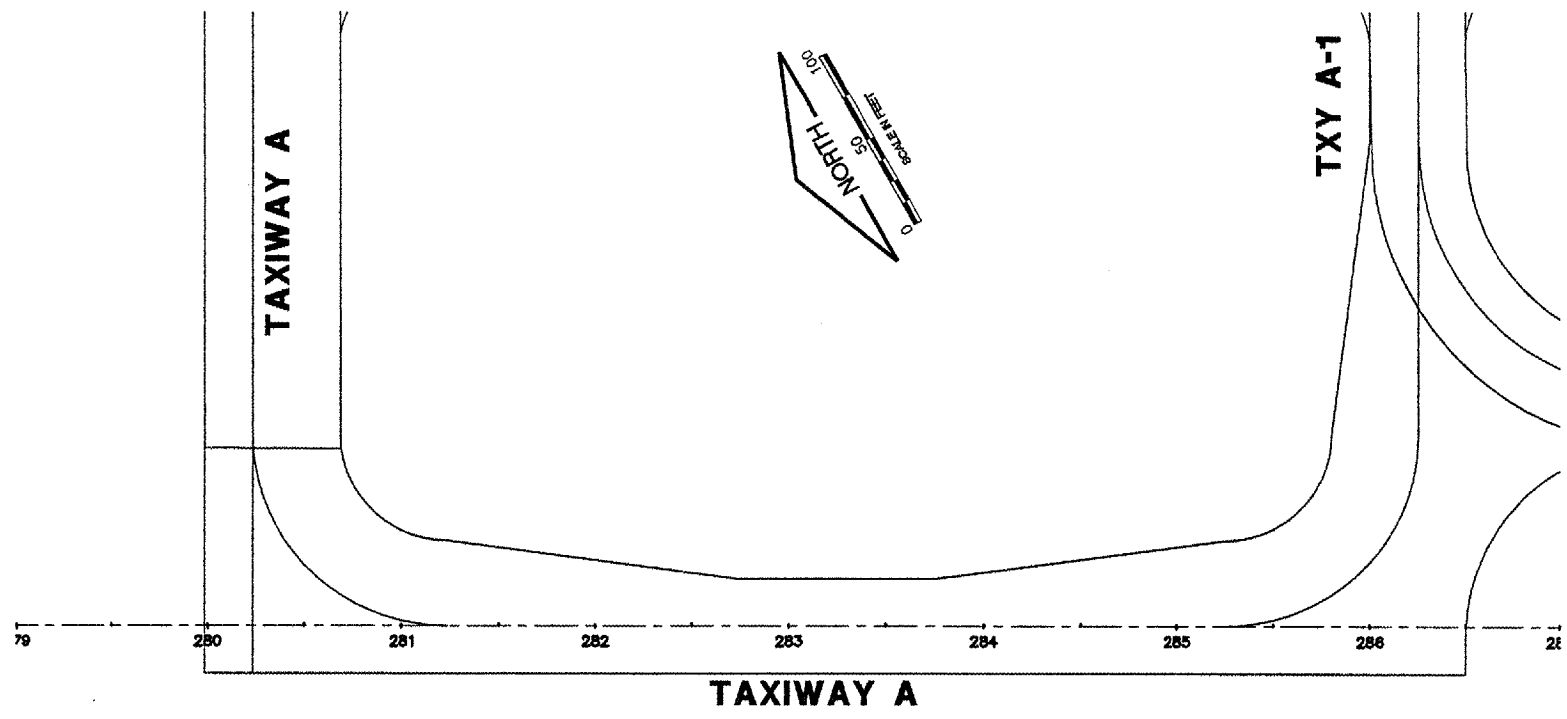
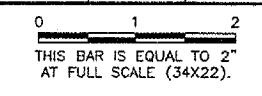


VE044

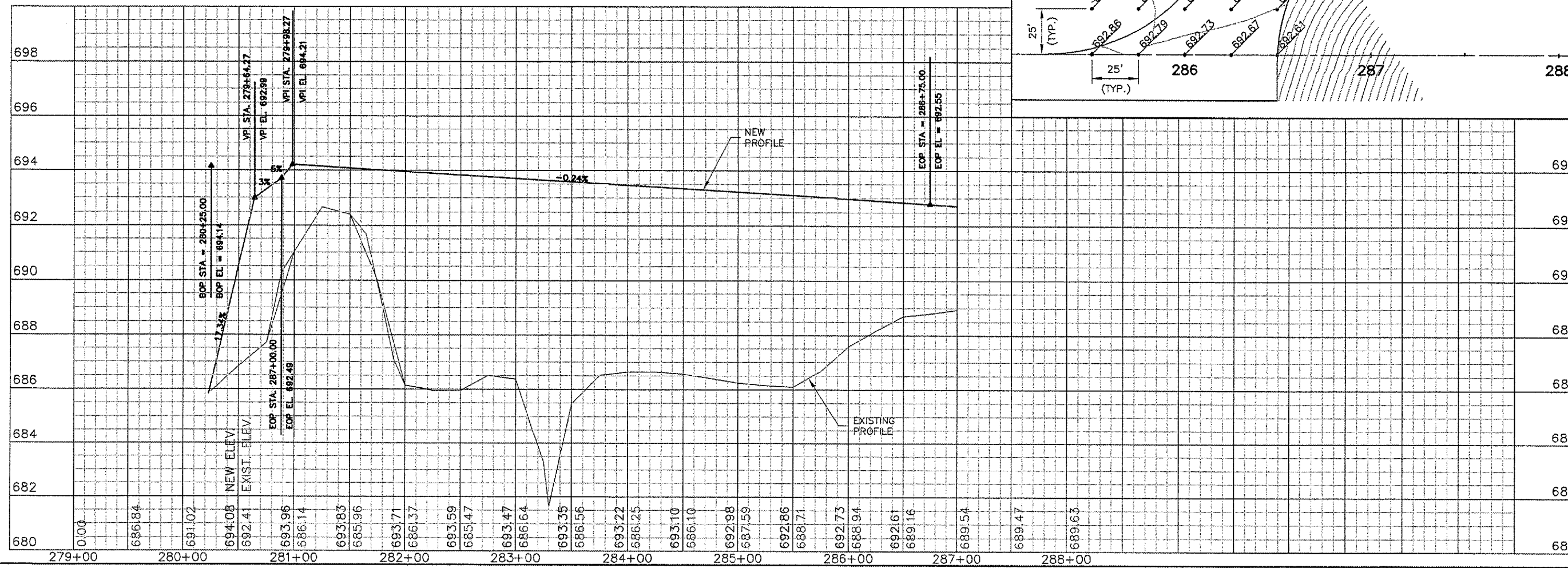
K:\Danville\0504203\Draw\Sheets\
 FILE: 08_PLANPRO.dwg
 LAYOUT: PLANPRO
 UPDATE BY: odraghan
 SURVEY BOOK #
 DATE: Fri 1/13/06 8:56am
 XREF DWG: C:\info.dwg
 rprf001.dwg
 DNV-EXISTBASE.DWG
 BASE_PROPGEODWG
 DanVEPBase.DWG

REVISIONS

NUMBER	BY	DATE



SCALES:
 1" = 50' HOR
 1" = 2' VER



VERMILION COUNTY AIRPORT
 DANVILLE, ILLINOIS

EXTEND PARALLEL TAXIWAY 600 FEET
 TAXIWAY A PLAN & PROFILE
 STA. 279+00 TO STA. 287+00

© Copyright CMT, Inc.
CMT
 CRAWFORD, MURPHY & TILLY, INC.
 CONSULTING ENGINEERS
 License No. 84-000613

DESIGN BY:	JEF
DRAWN BY:	DPA
CHECKED BY:	SMH
APPROVED BY:	JEF
DATE:	01/13/2006
JOB No:	05042-0300
ILLINOIS PROJECT	DNV-3537
A.I.P. PROJECT	3-17-0032-B10
SHEET	08 OF 29 SHEETS