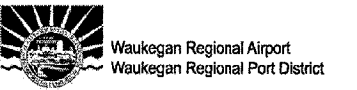




HANSON PROFESSIONAL SERVICES INC.

815 Commerce Drive, Suite 200
Oak Brook, Illinois 60523
Telephone: 630.990.3800
Fax: 630.990.3801

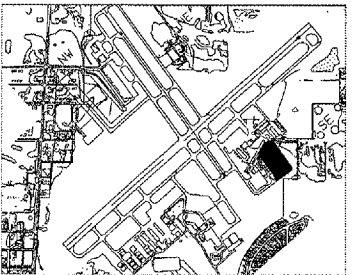


3580 North McAree Road
Waukegan, Illinois 60087
Phone: 847.244.0055
Fax: 847.244.3813

WAUKEGAN REGIONAL AIRPORT

CONSTRUCT NEW T-HANGAR
APRONS, TAXIWAYS AND
AUTO ACCESS

IDA PROJECT NO. UGN-3499



KEY MAP






No.	Drawing Issue Description	Date	By

Date
JANUARY 27, 2006

PAVEMENT REMOVAL
AND SAWCUTTING PLAN

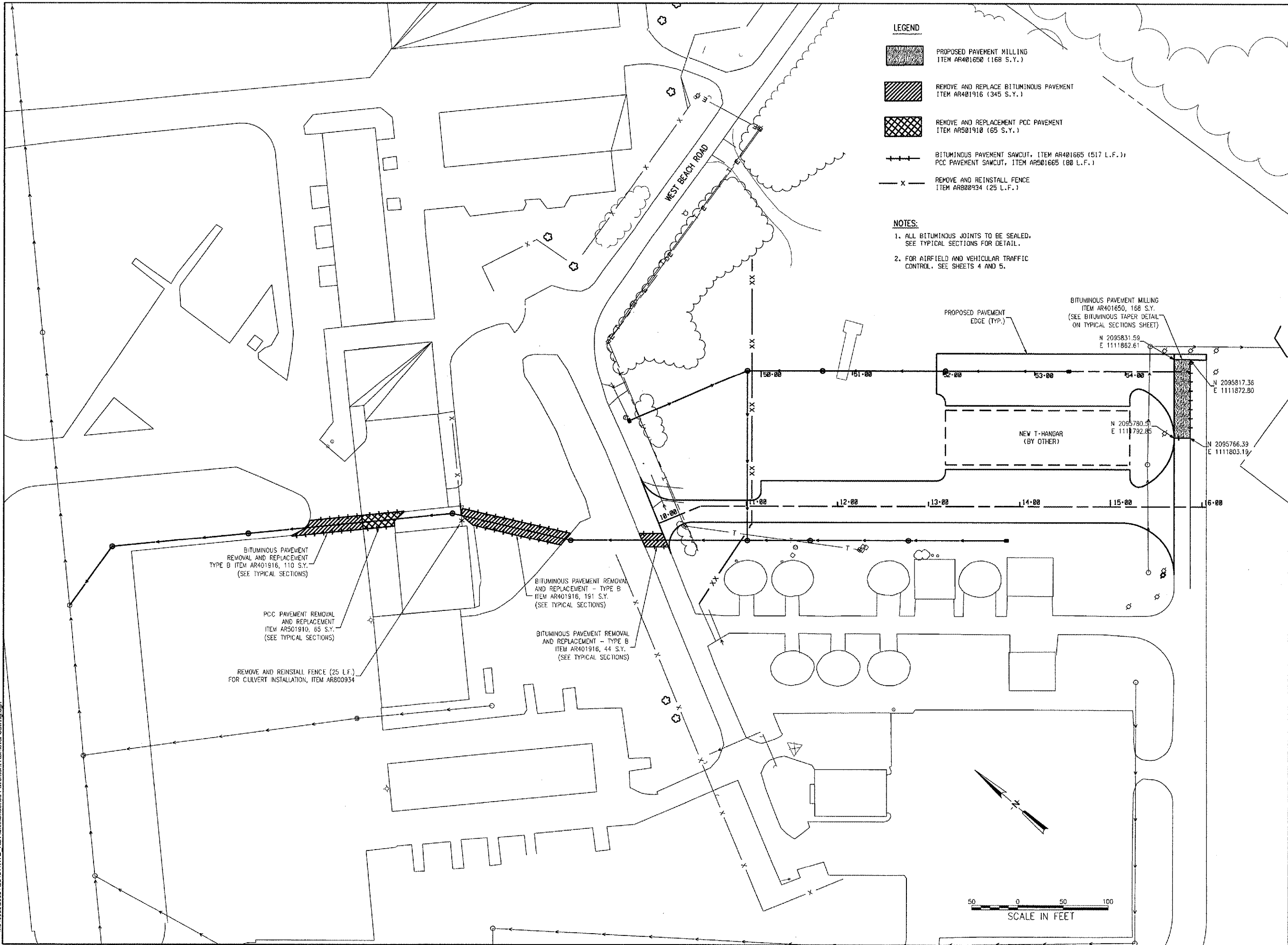
831-04TXVD
Project Number
AAP 11/15/05
Layout By Date
AAP 11/15/05
Designed By Date
KLJRMH 01/23/06
Reviewed By Date
KLJ AAP
Drawn By Sheet No.

LEGEND

-  PROPOSED PAVEMENT MILLING
ITEM AR401650 (168 S.Y.)
-  REMOVE AND REPLACE BITUMINOUS PAVEMENT
ITEM AR401916 (345 S.Y.)
-  REMOVE AND REPLACE PCC PAVEMENT
ITEM AR501910 (65 S.Y.)
-  BITUMINOUS PAVEMENT SAWCUT, ITEM AR401665 (517 L.F.);
PCC PAVEMENT SAWCUT, ITEM AR501665 (80 L.F.)
-  REMOVE AND REINSTALL FENCE
ITEM AR800934 (25 L.F.)

NOTES:

1. ALL BITUMINOUS JOINTS TO BE SEALED.
SEE TYPICAL SECTIONS FOR DETAIL.
2. FOR AIRFIELD AND VEHICULAR TRAFFIC
CONTROL, SEE SHEETS 4 AND 5.



01/24/2006 08:08 AM
AAP
C:\Users\0031785104\1\TXVD_REV\Civil\Sheet08_Pavement Removal-Sawing.dgn