

STATE OF ILLINOIS
DEPARTMENT OF TRANSPORTATION

F.A.S. RTE.	SECTION	COUNTY	TOTAL SHEETS	SHEET NO.
1476	DAY LABOR	McLEAN	8	1
		ILLINOIS	PROJECT NO. 19E508	

FOR INDEX OF SHEETS, SEE SHEET NO. 2
FOR SUMMARY OF QUANTITIES, SEE SHEET NO. 2

PROPOSED HIGHWAY PLANS

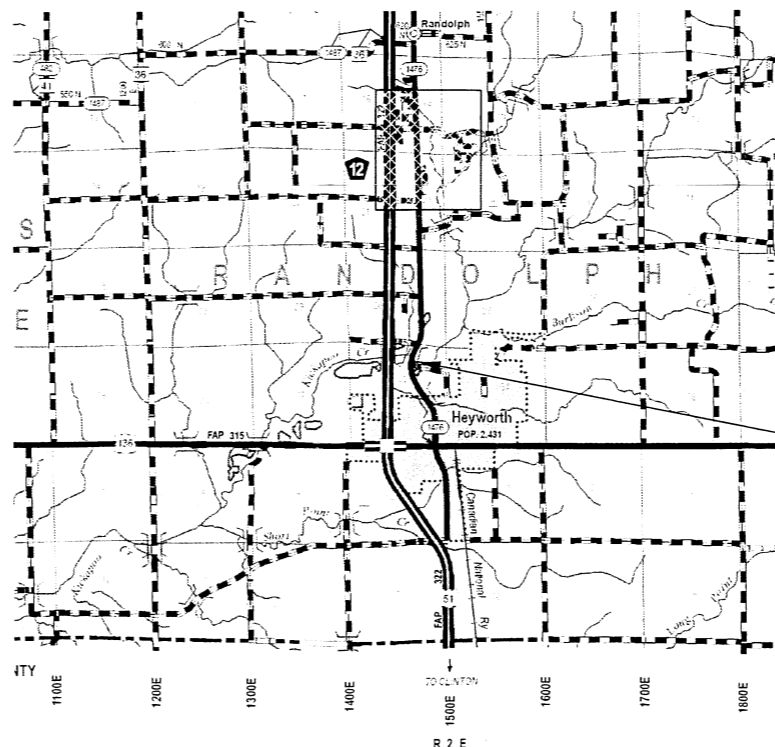
S.N. 057-0056
DAY LABOR
PROJECT NUMBER 19E508
BRIDGE DECK REPAIRS
S.B.I. - 2 (OLD 51) OVER KICKAPOO CREEK
MCLEAN COUNTY



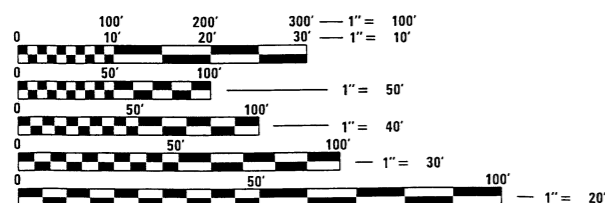
CURRENT TRAFFIC DATA

S.B.I. - 2 (OLD 51)
2016 ADT = 1,100
2032 ADT = 1,396
PU + PC % = 96.4
SU % = 2.73
MU % = 0.91

DESIGN DESIGNATION
MAJOR COLLECTOR

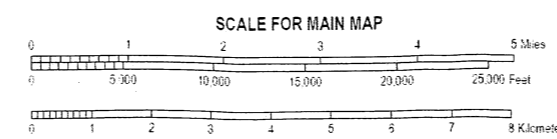


EXISTING S.N. 057-0056
OLD 51 OVER KICKAPOO CREEK
STATION 159+69.60



FULL SIZE PLANS HAVE BEEN PREPARED USING STANDARD ENGINEERING SCALES. REDUCED SIZED PLANS WILL NOT CONFORM TO STANDARD SCALES. IN MAKING MEASUREMENTS ON REDUCED PLANS, THE ABOVE SCALES MAY BE USED.

J.U.L.I.E.
JOINT UTILITY LOCATION INFORMATION FOR EXCAVATORS
1-800-892-0123
OR 811 RANDOLPH TOWNSHIP



GROSS LENGTH = 301.00 FT. = 0.057 MILE
NET LENGTH = 301.00 FT. = 0.057 MILE

STATE OF ILLINOIS
DEPARTMENT OF TRANSPORTATION

SUBMITTED 1/7 20 19
J. A. Santos
REGIONAL ENGINEER

ENGINEER OF DESIGN AND ENVIRONMENT

DIRECTOR OF HIGHWAYS PROJECT IMPLEMENTATION

PRINTED BY THE AUTHORITY OF THE STATE OF ILLINOIS

PROJECT NO. 19E508

057-0056

THE EXISTING STRUCTURE WAS BUILT IN 1969 AS F.A. ROUTE 2, SECTION 55 BR AT STATION 159+69.60 IN MCLEAN COUNTY. THE SUPERSTRUCTURE CONSISTS OF SIX - W36 X 118 ROLLED STEEL BEAMS SUPPORTING AN 8" R.C. DECK. THE SUPERSTRUCTURE IS SUPPORTED BY TWO PILE BENT ABUTMENTS ON STEEL PILES AND TWO SOLID WALL PIERS ON SPREAD FOOTINGS. THE EXISTING STRUCTURE MEASURES 180'-8" BK - BK OF ABUTMENTS AND 46'-0" OUT TO OUT OF DECK. THE STRUCTURE WAS BUILT ON A HORIZONTAL CURVE.

WORK SHALL BE COMPLETED UTILIZING STAGED CONSTRUCTION.

INTENT OF PROJECT

SUPERSTRUCTURE REPLACEMENT OF 057-0056 IS STILL 5+ YEARS AWAY. RIDE QUALITY IS POOR. A 2" HMA WEARING SURFACE MUST BE PLACED TO GAIN 5+ YRS. DUE TO THE SHORT-TERM NATURE OF THIS PROJECT, WATERPROOFING WILL BE OMITTED. PATCHING WILL BE LIMITED TO THE WORST LOCATIONS.

PROPOSED IMPROVEMENTS

1. FULL & PARTIAL DEPTH PATCHING
2. MILL BUTT JOINT
3. HMA SURFACE COURSE, 2"
4. PLACE AGGREGATE SHOULDERS
5. POLYMER CONCRETE AND SILICONE JOINTS

GENERAL NOTES

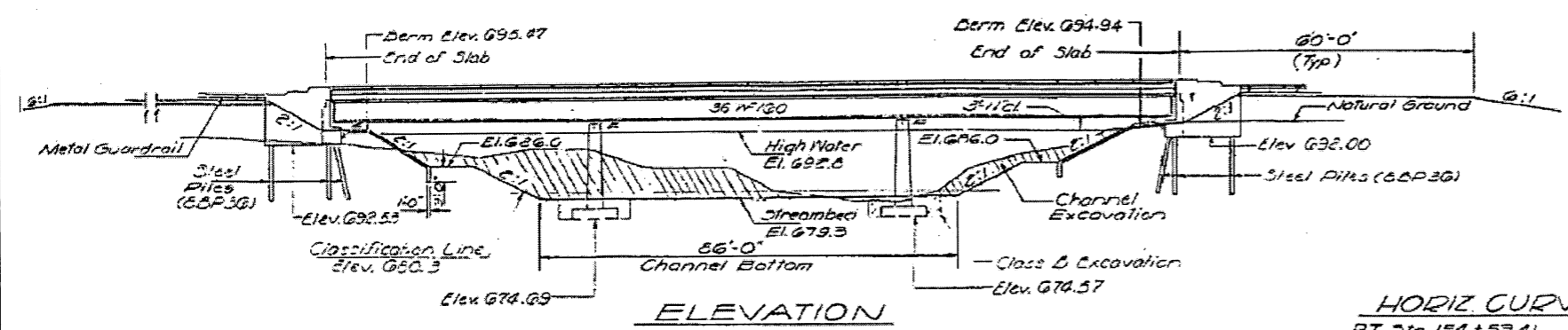
PLAN DIMENSIONS AND DETAILS RELATIVE TO EXISTING PLANS ARE SUBJECT TO NOMINAL CONSTRUCTION VARIATIONS. THE CONTRACTOR SHALL FIELD VERIFY EXISTING DIMENSIONS AND DETAILS AFFECTING NEW CONSTRUCTION AND MAKE NECESSARY APPROVED ADJUSTMENTS PRIOR TO CONSTRUCTION OR ORDERING OF MATERIALS. SUCH VARIATIONS SHALL NOT BE CAUSE FOR ADDITIONAL COMPENSATION FOR A CHANGE IN SCOPE OF WORK, HOWEVER, THE CONTRACTOR WILL BE PAID FOR THE QUANTITY ACTUALLY FURNISHED AT THE UNIT PRICE BID FOR THE WORK.

EXISTING REINFORCEMENT BARS EXTENDING INTO THE REMOVAL AREA SHALL BE CLEANED, STRAIGHTENED AND INCORPORATED INTO THE NEW CONSTRUCTION. ANY REINFORCEMENT BARS THAT ARE DAMAGED DURING CONCRETE REMOVAL SHALL BE REPLACED WITH AN APPROVED SPLICER OR ANCHORAGE SYSTEM. COST INCLUDED WITH CONCRETE REMOVAL.

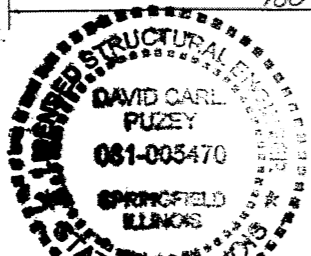
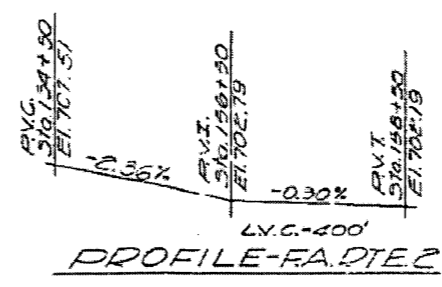
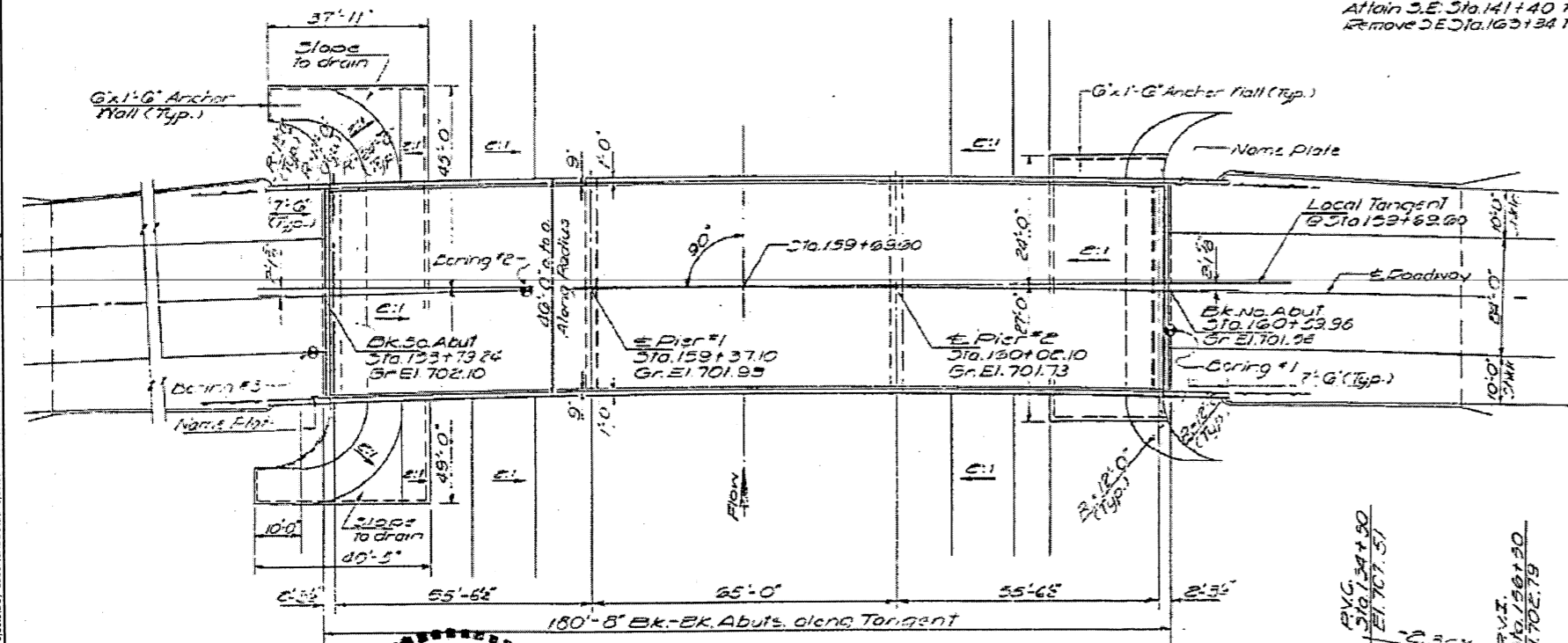
BILL OF MATERIALS

ITEM	UNIT	TOTAL
BITUMINOUS MATERIALS (PRIME COAT)	POUND	590.00*
HOT-MIX ASPHALT SURFACE REMOVAL - BUTT JOINT	SQYD	285.00
HOT-MIX ASPHALT SURFACE COURSE, MIX "C", N70	TON	147.00*
AGGREGATE SHOULDERS, TYPE B	TON	12.00
** DECK SLAB REPAIR (FULL DEPTH, TYPE II)	SQYD	30.00
** DECK SLAB REPAIR (PARTIAL)	SQYD	86.00
SILICONE JOINT SEALER, 1.5"	FOOT	88.00
POLYMER CONCRETE	CUFT	10.00

* INCLUDES BRIDGE DECK & APPROACHES
** ESTIMATED



HORIZ CURVE DATA
 P.I. Sta. 154+53.41
 Δ = 64°-00'
 D = 3°-00'
 R = 1909.66'
 T = 1193.41'
 L = 2133.33'
 E = 342.21'
 S.E. = 0.06%
 Affain S.E. Sta. 141+40 to Sta. 143+20
 Remove S.E. Sta. 163+34 to Sta. 163+14



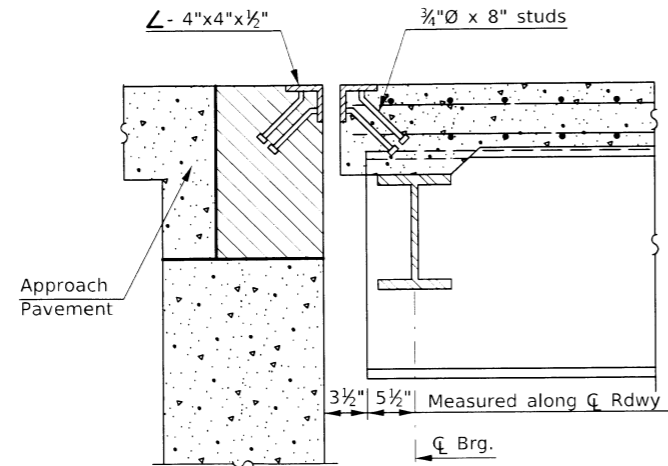
David Carl Puzey 1/2/19
 Expires 11/30/20

USER NAME = piersonbr	DESIGNED - JAL	REVISED -	STATE OF ILLINOIS DEPARTMENT OF TRANSPORTATION	GENERAL PLAN & ELEVATION S.N. 057-0056		F.A.S. RTE. 1476	SECTION DAY LABOR	COUNTY MCLEAN	TOTAL SHEETS 8	SHEET NO. 5	
PLOT SCALE = 40.0000' / in.	CHECKED -	REVISED -		SCALE: NONE	SHEET 1 OF 1 SHEETS	STA. TO STA.	PROJECT NO. 19E508				
PLOT DATE = 1/2/2019	DATE -	REVISED -		ILLINOIS FED. AID PROJECT							

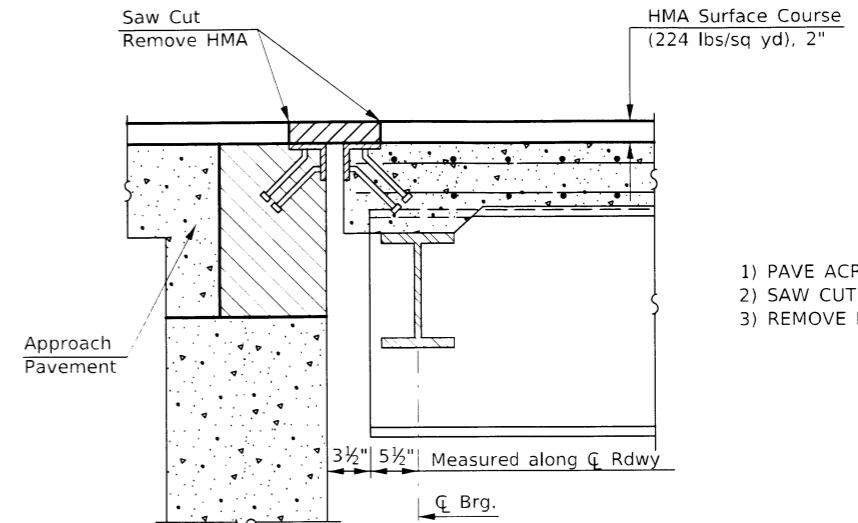
MODEL: \$MODELNAME\$ FILE NAME: p:\110484EIDINTEG Illinois.gov\FWIDOT\Documents\DOT - Office\District 5\Projects\RDwy Labor\CAD\Drawings\Project\19E508-056-19E508-056-01.dwg

BRIDGE JOINT DETAILS

S.N. 057-0056

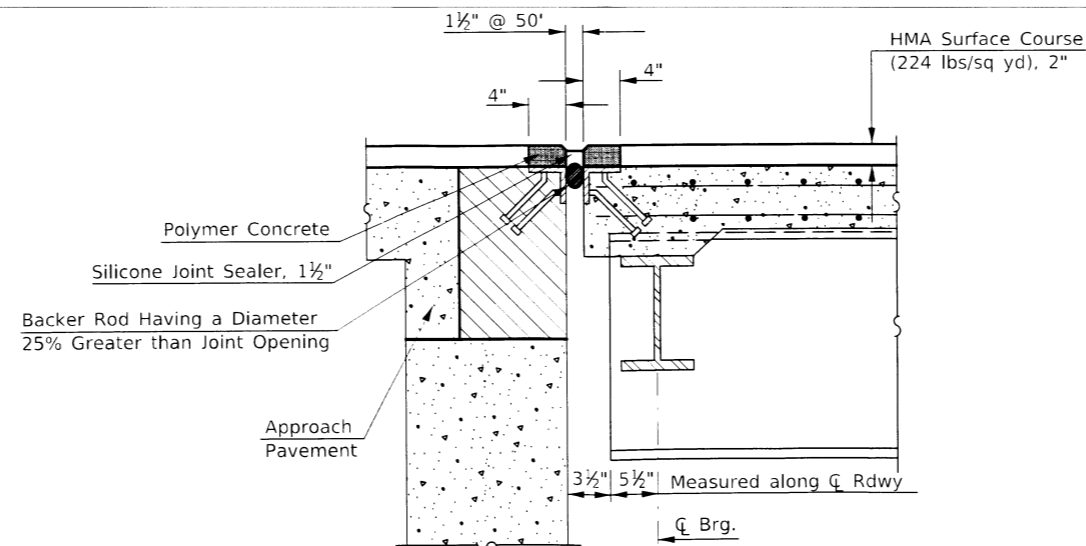


SECTION AT EXISTING JOINT

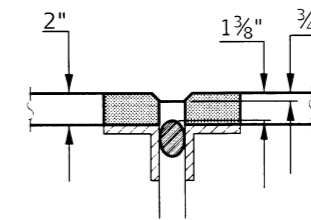


- 1) PAVE ACROSS JOINT
- 2) SAW CUT AT BACK OF ARMOUR
- 3) REMOVE HMA OVER ARMOUR

SECTION AT JOINT AFTER PAVING



SECTION AT PROPOSED JOINT



ENLARGED DETAIL AT JOINT

MODEL: P:\MODEL\NAMES...
 FILE NAME: ...\\IL041\BIT\IN\TLCG...
 MODEL: P:\MODEL\NAMES...
 FILE NAME: ...\\IL041\BIT\IN\TLCG...

USER NAME = piersonbr	DESIGNED -	REVISED -
	DRAWN -	REVISED -
PLOT SCALE = 1/8" = 1'-0"	CHECKED -	REVISED -
PLOT DATE = 1/2/2019	DATE -	REVISED -

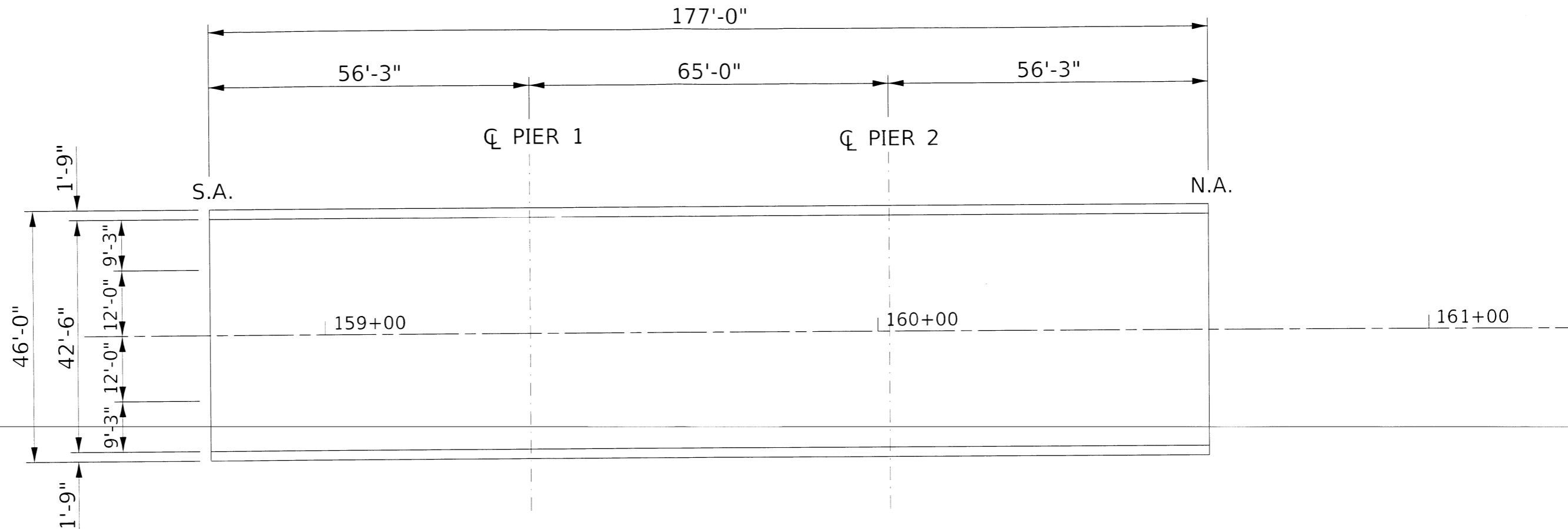
**STATE OF ILLINOIS
DEPARTMENT OF TRANSPORTATION**

**BRIDGE JOINT DETAILS
S.N. 057-0056**

SCALE: NONE SHEET 1 OF 1 SHEETS STA. TO STA.

F.A.S. RTE.	SECTION	COUNTY	TOTAL SHEETS	SHEET NO.
1476	DAY LABOR	MCLEAN	8	7
PROJECT NO. 19E508				
ILLINOIS FED. AID PROJECT				

DECK PATCHING PLAN



NOTES:

EXISTING BARS SHALL BE REUSED, CLEANED, STRAIGHTENED AND INCORPORATED INTO THE NEW CONSTRUCTION

AREA OF DECK SLAB REPAIR (PARTIAL) HAS BEEN ESTIMATED AT 10% OF THE DECK AREA AND (FULL DEPTH) 5% OF THE DECK AREA. THE ACTUAL QUANTITY AND LOCATIONS SHALL BE DETERMINED BY THE ENGINEER AND SHOWN ON THIS SHEET FOR AS BUILT RECORDS.

MODEL: \KUSERS\NAME; TEL: 312-243-1100; FILE: C:\DOT\PROJECTS\19E508\19E508-0056\19E508-0056.dwg; PROJECT: 19E508; SHEET: 8 OF 8

USER NAME = aierstonbr	DESIGNED -	REVISED -
	DRAWN -	REVISED -
PLOT SCALE = 20.0000' / 1" =	CHECKED -	REVISED -
PLOT DATE = 12/28/2018	DATE -	REVISED -

STATE OF ILLINOIS
DEPARTMENT OF TRANSPORTATION

DECK PATCHING PLAN
S.N. 057-0056
 SCALE: 1" = 10' SHEET 1 OF 1 SHEETS STA. TO STA.

F.A.S. RTE.	SECTION	COUNTY	TOTAL SHEETS	SHEET NO.
1476	DAY LABOR	MCLEAN	8	8
PROJECT NO. 19E508				
ILLINOIS FED. AID PROJECT				