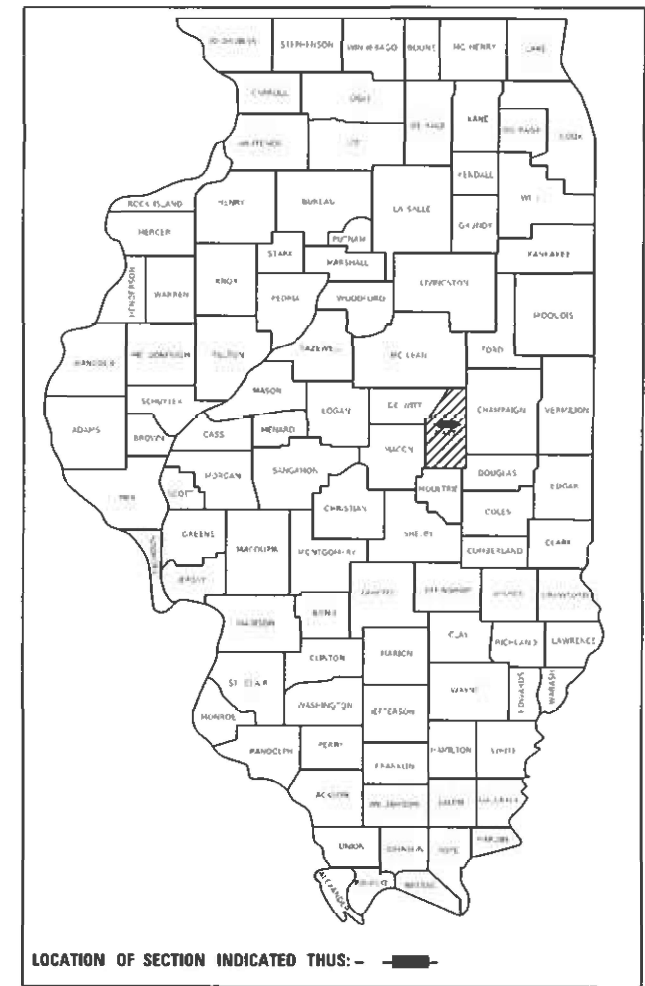


STATE OF ILLINOIS
DEPARTMENT OF TRANSPORTATION

F.A.P. RTE	SECTION	COUNTY	TOTAL SHEETS	SHEET NO.
721	115BR-1BR-1	PIATT	3	1
		ILLINOIS	CONTRACT NO. 70G17	

D-95-036-22



**PROPOSED
HIGHWAY PLANS**

F.A.P. ROUTE 721 (IL 10)
SECTION (115BR-1)BR-1
PROJECT N/A
BRIDGE REPAIR
PIATT COUNTY

C-95-072-22

OVER MADDEN CREEK 0.5 MI E OF LODGE

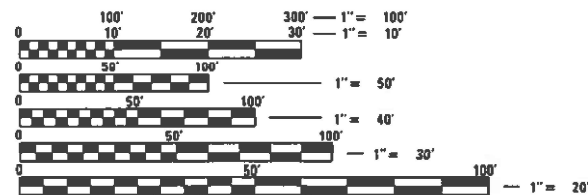
FOR INDEX OF SHEETS, SEE SHEET NO. 2

FOR SUMMARY OF QUANTITIES, SEE SHEET NO. 3

CURRENT TRAFFIC DATA

2022 ADT	1,800
2032 ADT	1,950
2042 AM DHV	155
2042 PM DHV	185
PU + PC%	83.9
SU%	8.3
MU%	7.8

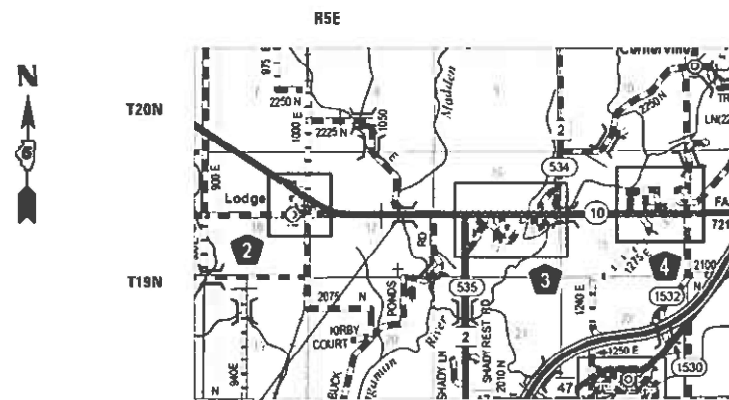
DESIGN DESIGNATION
MINOR ARTERIAL



FULL SIZE PLANS HAVE BEEN PREPARED USING STANDARD ENGINEERING SCALES, REDUCED SIZED PLANS WILL NOT CONFORM TO STANDARD SCALES. IN MAKING MEASUREMENTS ON REDUCED PLANS, THE ABOVE SCALES MAY BE USED.

J.U.L.I.E.
JOINT UTILITY LOCATION INFORMATION FOR EXCAVATORS
1-800-892-0123
OR 811 LODGE TOWNSHIP

PROJECT ENGINEER: TIM BRANDENBURG
PROJECT MANAGER: JEFF M. SHERER
DISTRICT PHONE (217) 465-4181
CONTRACT NO. 70G17



S.N. 074-0005
STA. 1210 + 89.58
BRIDGE REPAIR

GROSS LENGTH = 151.438 FT. = 0.028 MILE
NET LENGTH = 151.438 FT. = 0.028 MILE

STATE OF ILLINOIS
DEPARTMENT OF TRANSPORTATION

SUBMITTED 12/2 20 22
Kensila Barnett
REGIONAL ENGINEER

February 3, 2023
SAE
ENGINEER OF DESIGN AND ENVIRONMENT

February 3, 2023
Stephen M. Smith
DIRECTOR OF HIGHWAYS PROJECT IMPLEMENTATION

**PRINTED BY THE AUTHORITY
OF THE STATE OF ILLINOIS**

INDEX OF SHEETS

<u>SHEET NO.</u>	<u>ITEM</u>
1	COVER SHEET
2	INDEX OF SHEETS/ HIGHWAY STANDARDS
2	GENERAL NOTES
2	SUMMARY OF QUANTITIES
3	S.N. 074-0005 PIER REPAIR PLANS

LIST OF STANDARDS

<u>STANDARD NO.</u>	<u>DESCRIPTION</u>
000001-08	STANDARD SYMBOLS, ABBREVIATIONS AND PATTERNS
001001-02	AREAS OF REINFORCEMENT BARS
001006	DECIMAL OF AN INCH AND OF A FOOT
701001-02	OFF RD OPERATIONS, 2L, 2W, 15' FROM PAVEMENT EDGE
701006-05	OFF RD OPERATIONS, 2L, 2W, 15' TO 24" FROM PAVEMENT EDGE
701011-04	OFF RD MOVING OPERATION, 2L, 2W, DAY ONLY
701201-05	LANE CLOSURE, 2L 2W, DAY ONLY FOR SPEEDS 45 MPH
701301-04	LANE CLOSURE, 2L, 2W, SHORT TIME OPERATION
701901-08	TRAFFIC CONTROL DEVICES
780001-05	TYPICAL PAVEMENT MARKINGS

GENERAL NOTES

G.N.-100A

ELECTRONIC FILES AND/OR ELECTRONIC SURVEY INFORMATION INCLUDING CADD FILES WILL NOT BE AVAILABLE TO THE CONTRACTOR.

G.N.-105.09A

ALL ELEVATIONS SHOWN IN THE PLANS ARE BASED ON NORTH AMERICAN VERTICAL DATUM OF 1988. (NAVD 88)

THERE ARE NO COMMITMENTS ASSOCIATED WITH THIS PROJECT

THE APPLICABLE PORTIONS OF THE GUIDE BRIDGE SPECIAL PROVISION STRUCTURAL REPAIR OF CONCRETE SHALL APPLY (SEE SPECIAL PROVISIONS)

SUMMARY OF QUANTITIES

				<u>CONSTRUCTION CODE</u>
				PIATT STRUCTURE IMPROVEMENT F.A.P. 721 S.N. 074-0005 STA. 1210+89.58 100% STATE
<u>CODE NO.</u>	<u>ITEM</u>	<u>UNIT</u>	<u>TOTAL QUANTITY</u>	<u>0047 RURAL</u>
50300225	CONCRETE STRUCTURES	CU YD	13.2	13.2
50800205	REINFORCEMENT BARS, EPOXY COATED	POUND	830.0	830.0
67000500	ENGINEERS FIELD OFFICE, TYPE B	CAL MO	3.0	3.0
67100100	MOBILIZATION	L SUM	1.0	1.0
70100450	TRAFFIC CONTROL AND PROTECTION, STANDARD 701201	L SUM	1.0	1.0
Z0001905	STRUCTURAL STEEL REPAIR	POUND	2,990.0	2,990.0
Z0013798	CONSTRUCTION LAYOUT	EACH	1.0	1.0
Z0073200	TEMPORARY SHORING AND CRIBBING	EACH	16.0	16.0

SPECIALTY ITEM (NONE)

MODEL: \\MODELMAME\...
 FILE: \\MODELMAME\...

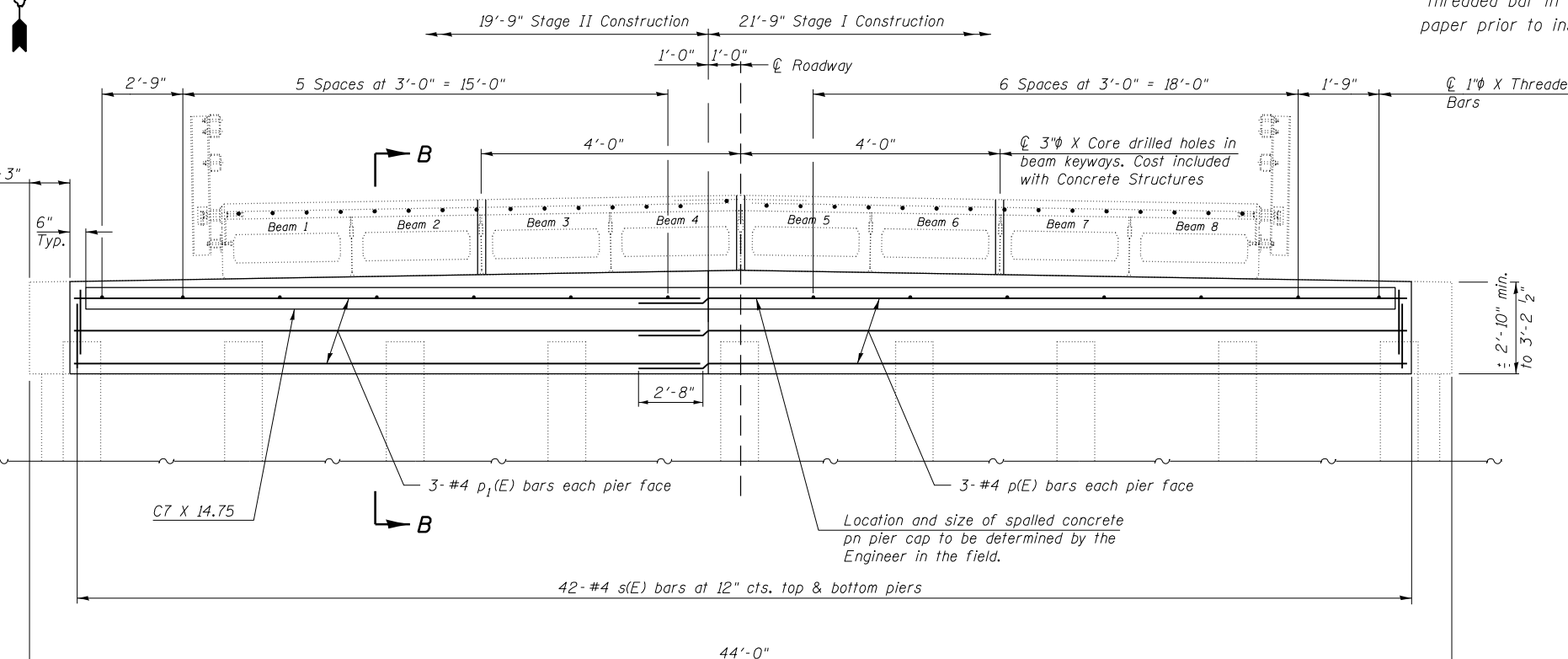
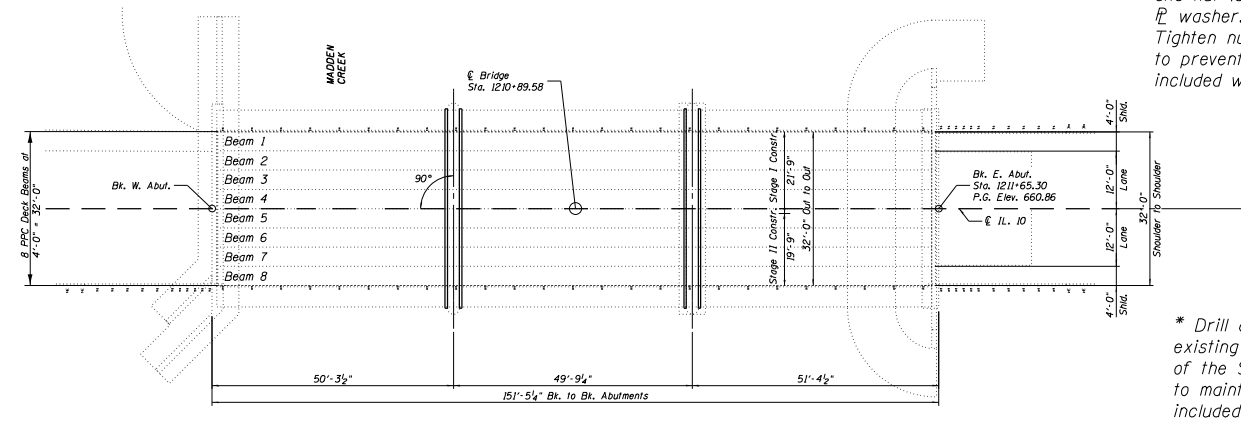
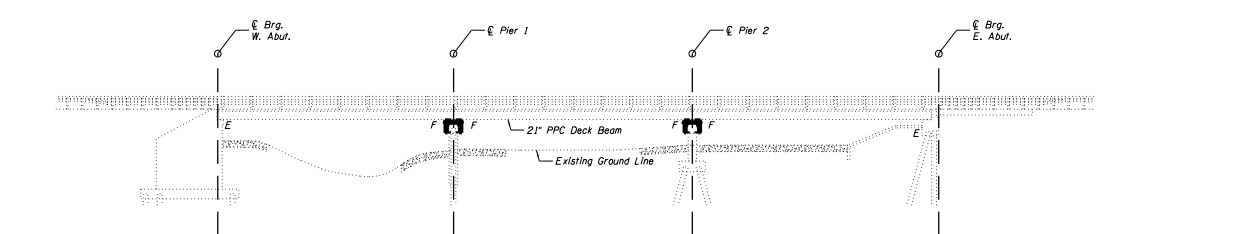
USER NAME = Jeff.Sherer	DESIGNED - JMS	REVISED -
	DRAWN - JMS	REVISED -
PLOT SCALE = 40.0000 ' / in.	CHECKED -	REVISED -
PLOT DATE = 11/29/2022	DATE - 031220	REVISED -

**STATE OF ILLINOIS
DEPARTMENT OF TRANSPORTATION**

**INDEX OF SHEETS/HIGHWAY STANDARDS
GENERAL NOTES**

SCALE: NONE SHEET 1 OF 1 SHEETS STA. TO STA.

F.A.P. RTE.	SECTION	COUNTY	TOTAL SHEETS	SHEET NO.
721	(115BR-1)BR-1	CHAMPAIGN	3	2
			CONTRACT NO. 70G17	
		ILLINOIS	FED. AID PROJECT	



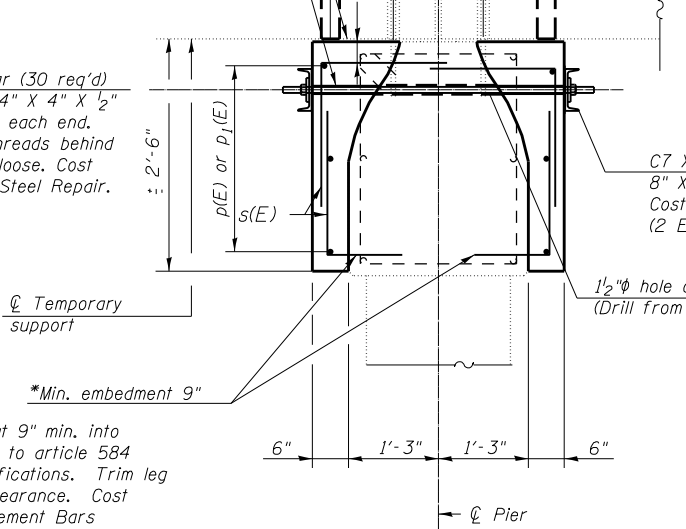
3" core drilled holes.
(Fill with Concrete Structures)

1/2" gap between bottom of beam and top of new concrete to be filled with 1/2" PJF (Typ.)

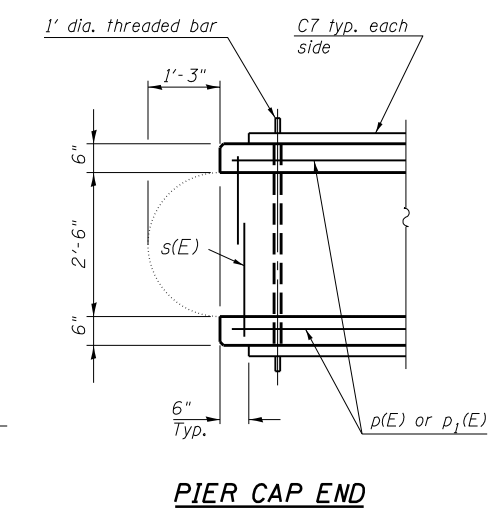
1 1/4" plastic conduit from existing concrete to face of form.

1" X 52" threaded bar (30 req'd) and nut (60 req'd) with 4" X 4" X 1/2" I washer. Threaded 8" each end. Tighten nuts and burr threads behind to prevent from coming loose. Cost included with Structural Steel Repair.

* Drill and epoxy grout 9" min. into existing cap according to article 584 of the Standard Specifications. Trim leg to maintain minimum clearance. Cost included with Reinforcement Bars Epoxy Coated.



BAR s(E)



GENERAL NOTES

The contractor shall use extreme care during concrete removal so as not to damage the PPC Deck Beams.

Plan dimensions and details relative to existing plans are subject to nominal construction variations. The contractor shall field verify existing dimensions and details affecting new construction and make necessary approved adjustments prior to construction or ordering of materials. Such variations shall not be cause for additional compensation for a change in scope of work, however, the contractor will be paid for the quantity actually furnished at the unit price bid work.

Reinforcement bars designated (E) shall be epoxy coated.

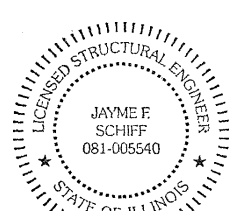
Existing reinforcement bars extending into the removal area shall be cleaned, straightened and incorporated into the new construction. Any reinforcement bars that are damaged during concrete removal shall be replaced with an approved bar splicer or anchorage system. Cost included with Concrete Structures.

All structural steel shall conform to AASHTO Classification M-270 Gr. 36, unless otherwise noted.

Areas of repairs shown are estimated. The Engineer shall show actual locations of the repairs on As-Built Plans.

All Structural Steel shall be Hot Dipped Galvanized. See Special Provisions for "Hot Dip Galvanizing for Structural Steel.

Self-consolidating concrete shall be used throughout.



EXPIRES 11-30-2024

Jayme F. Schiff

Reaction Tables
DL = 23.8 kips
LL = 16.2 kips
IMP = 6.4 kips
Total = 46.4 kips

BILL OF MATERIAL

Bar	No.	Size	Length	Shape
p(E)	12	#4	23'-7"	—
p ₁ (E)	12	#4	19'-7"	—
s(E)	168	#4	3'-11"	L
Structural Steel Repair		Pound		2,990.0
Concrete Structures		Cu Yd		13.2
Reinforcement Bars, Epoxy Coated		Pound		830.0
Temporary Shoring and Cribbing		Each		16.0