

STATE OF ILLINOIS
DEPARTMENT OF TRANSPORTATION

F.A.S. RTE.	SECTION	COUNTY	TOTAL SHEETS	SHEET NO.
1909	22SLP-2	UNION	13	1
ILLINOIS			CONTRACT NO. 78902	

FOR INDEX OF SHEETS, SEE SHEET NO. 3
FOR SUMMARY OF QUANTITIES, SEE SHEET NO. 4

**PROPOSED
HIGHWAY PLANS**

FAS 1909 (IL 127)
SECTION 22SLP-2
COVD-SPTW(608)
SLOPE REPAIR
UNION COUNTY

C-99-102-21

TRAFFIC DATA

FAS 1909 (IL 127)				
STA 88				
	2022	2032	2042	
PV =	1,080	1,195	1,320	
SU =	60	65	75	
MU =	70	80	85	
ADT =	1,210	1,340	1,480	

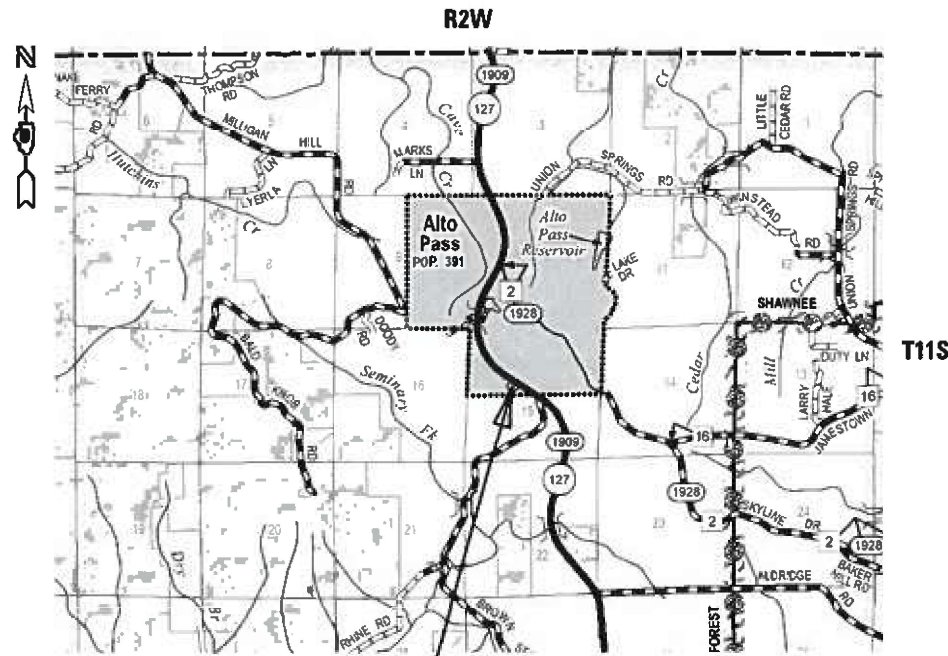
**TOWNSHIPS
ALTO PASS**

DESIGN DESIGNATION : N/A
COORDINATE SYSTEM : ILLINOIS WEST
POSTED SPEED : 55 MPH

J.U.L.I.E.
JOINT UTILITY LOCATION INFORMATION FOR EXCAVATION
1-800-892-0123
OR 811

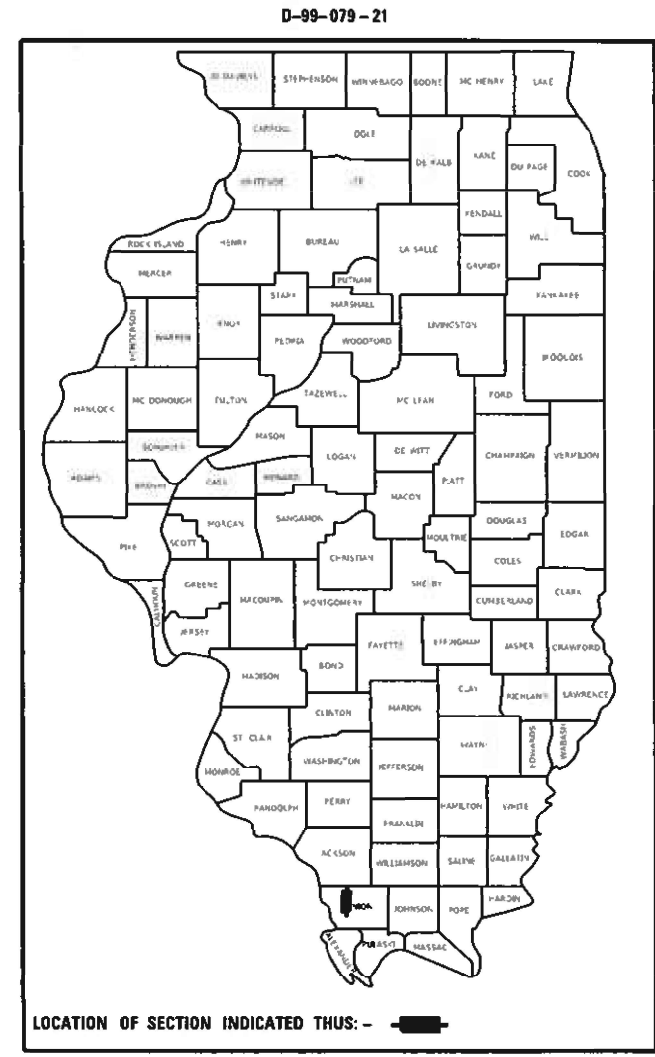
PROJECT ENGINEER VALERIE ROLLA
PROJECT DESIGNER MICHAEL GRAY

CONTRACT NO. 78902



PROJECT LOCATION
STA 376+40 R1 TO STA 377+00 R2

GROSS LENGTH = 421.66 FT. = 0.08 MILES
NET LENGTH = 421.66 FT. = 0.08 MILES



LOCATION OF SECTION INDICATED THUS: - [black rectangle]

STATE OF ILLINOIS
DEPARTMENT OF TRANSPORTATION

SUBMITTED Nov 30 20 22
Kirk H. Brown
REGION FIVE ENGINEER

February 3, 2023
[Signature]
ENGINEER OF DESIGN AND ENVIRONMENT

February 3, 2023
[Signature]
DIRECTOR OF HIGHWAYS PROJECT IMPLEMENTATION

**PRINTED BY THE AUTHORITY
OF THE STATE OF ILLINOIS**

Prepared By: Charles Stein
DISTRICT STUDIES & PLANS ENGINEER

Examined By: Nancy The
DISTRICT LAND ACQUISITION ENGINEER

Examined By: Con Nelson
DISTRICT PROGRAM DEVELOPMENT ENGINEER

Examined By: [Signature]
DISTRICT OPERATIONS ENGINEER

Examined By: Doris J. [Signature]
DISTRICT PROJECT IMPLEMENTATION ENGINEER

Examined By: Doris J. [Signature]
DISTRICT CONSTRUCTION ENGINEER

Examined By: Aam Hays
DISTRICT MATERIALS ENGINEER

NO. OF ARCHITECTURAL SHEETS

USER NAME = SUSERS	DESIGNED -	REVISED -
	DRAWN -	REVISED -
PLOT SCALE = SCALES	CHECKED -	REVISED -
PLOT DATE = SDATES	DATE -	REVISED -

STATE OF ILLINOIS
DEPARTMENT OF TRANSPORTATION

SIGNATURE SHEET

SCALE: SHEET OF SHEETS STA. TO STA.

F.A.S. RTE.	SECTION	COUNTY	TOTAL SHEETS	SHEET NO.
1909	22SLP-2	UNION	13	2
			CONTRACT NO. 78902	
ILLINOIS FED. AID PROJECT				

INDEX OF SHEETS

COMMITMENTS: NONE

SHEET NO	DESCRIPTION
1	COVER SHEET
2	SIGNATURE SHEET
3	INDEX OF SHEETS, HIGHWAY STANDARDS, STATION EQUATIONS, COMMITMENTS
4	SUMMARY OF QUANTITIES
5	TYPICAL SECTIONS
6	EARTH EXCAVATION SCHEDULE
7	SOIL BORING LOG
8	IL 127 (FAS 1909) PLAN LAYOUT
9	RIGHT OF WAY
10	LANDSCAPING & EROSION CONTROL PLAN
11-13	CROSS SECTIONS

STATION EQUATIONS

STA 376+56.14 (BK) = 372+94.48 (AH)

HIGHWAY STANDARDS

- 000001-08 - STANDARD SYMBOLS, ABBREVIATIONS, & PATTERNS
- 001006 - DECIMALS OF AN INCH & FOOT
- 701001-02 - OFF ROAD OPERATIONS, 2L, 2W, MORE THAN 15 FT MINIMUM FROM EOP
- 701006-05 - OFF ROAD OPERATIONS, 2L, 2W, 15 FT TO EOP
- 701201-05 - LANE CLOSURE, 2L, 2W, DAYONLY
- 701301-04 - LANE CLOSURE, 2L, 2W, SHORT TIME OPERATIONS
- 701901-08 - TRAFFIC CONTROL DEVICES
- 280001-07 - TEMPORARY EROSION CONTROL SYSTEMS

REV. - MS

MODEL: Default
FILE NAME: p:\illinois-pw-bentley.com\p\DOT\Documents\DOT - Offices\District 9\Projects\78902\CA\Drawings\0978902-STA-A-Cor-Std-Index-Typ-3.rvt.dgn

USER NAME = William.Gray	DESIGNED -	REVISED -
PLOT SCALE = 94.4444' / in.	DRAWN -	REVISED -
PLOT DATE = 12/2/2022	CHECKED -	REVISED -
	DATE -	REVISED -

**STATE OF ILLINOIS
DEPARTMENT OF TRANSPORTATION**

**INDEX OF SHEETS, COMMITMENTS,
STATION EQUATIONS, HIGHWAY STANDARDS**

SCALE: SHEET OF SHEETS STA. TO STA.

F.A.S. RTE.	SECTION	COUNTY	TOTAL SHEETS	SHEET NO.
1909	225LP-2	UNION	13	3
CONTRACT NO. 78902				
ILLINOIS FED. AID PROJECT				

SUMMARY OF QUANTITIES

COUNTY:	UNION CO
ROUTE:	FAS 1909
FUNDING:	100% FEDERAL
LOCATION:	RURAL
	ROADWAY
	0044

CODE NUMBER	ITEM DESCRIPTION	UNIT	
20200100	EARTH EXCAVATION	CU YD	1,303
25000200	SEEDING, CLASS 2	ACRE	0.4
25000400	NITROGEN FERTILIZER NUTRIENT	POUND	36
25000500	PHOSPHORUS FERTILIZER NUTRIENT	POUND	36
25000600	POTASSIUM FERTILIZER NUTRIENT	POUND	36
25100630	EROSION CONTROL BLANKET	SQ YD	1,627
28000400	PERIMETER EROSION BARRIER	FOOT	424
67100100	MOBILIZATION	L SUM	1
70100450	TRAFFIC CONTROL AND PROTECTION, STANDARD 701201	L SUM	1
70107025	CHANGEABLE MESSAGE SIGN	CAL DA	28

REV. - MS

MODEL: Default
FILE NAME: p:\Illinois-pw-bentley.com\p\DOT\Documents\DOT - Offices\District 9\Projects\78902\CAD\Drawings\0978902-51A-Cor_Sig_Index_Typ_Signed.dgn

USER NAME = William.Gray	DESIGNED -	REVISED -
PLOT SCALE = 94.4444' / in.	DRAWN -	REVISED -
PLOT DATE = 12/2/2022	CHECKED -	REVISED -
	DATE -	REVISED -

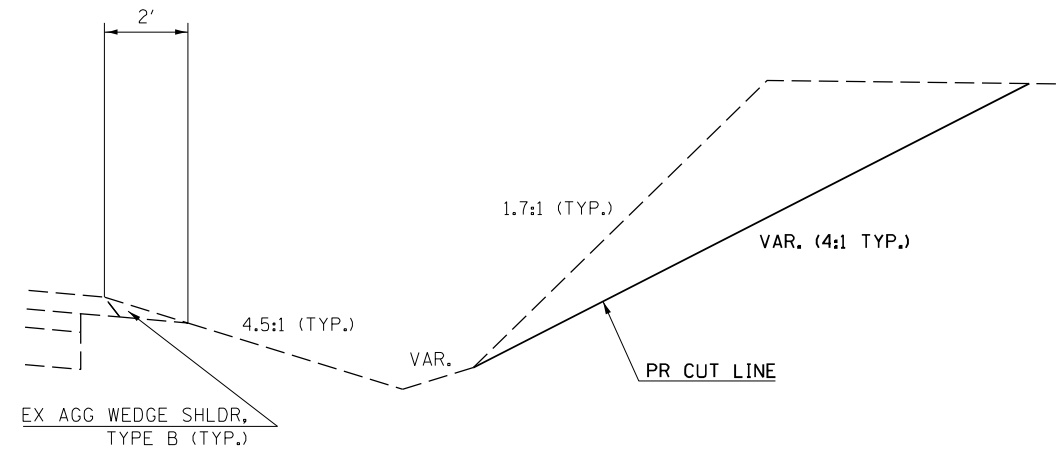
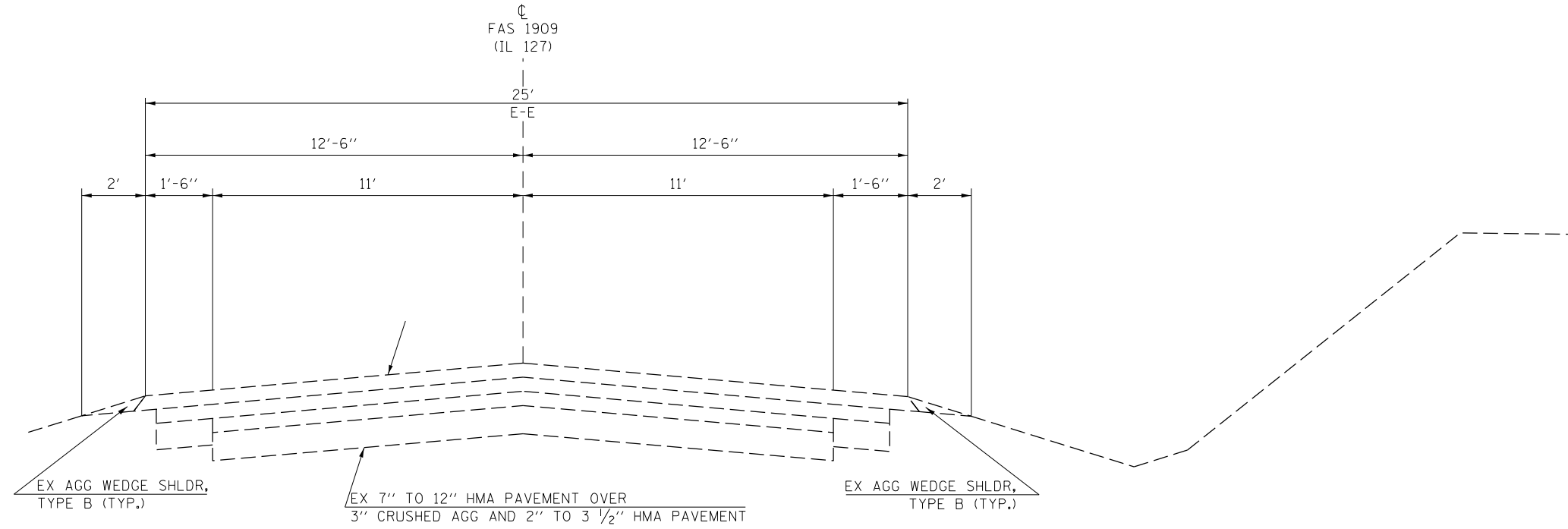
**STATE OF ILLINOIS
DEPARTMENT OF TRANSPORTATION**

SUMMARY OF QUANTITIES

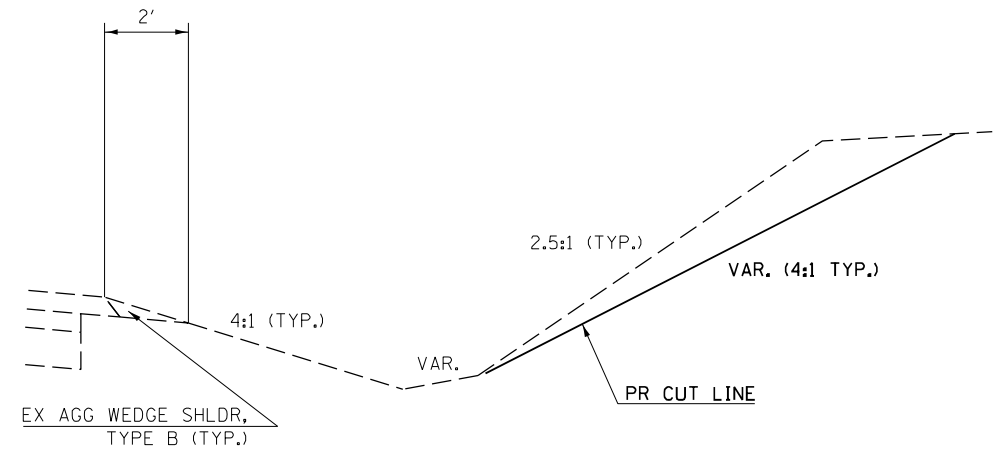
SCALE: SHEET OF SHEETS STA. TO STA.

F.A.S. RTE:	SECTION	COUNTY	TOTAL SHEETS	SHEET NO.
1909	225LP-2	UNION	13	4
CONTRACT NO. 78902				
ILLINOIS FED. AID PROJECT				

TYPICAL SECTIONS



TYPICAL EX SECTION
 *STA 376+50 R1 TO STA 373+50 R2
 STA 375+00 R2 TO STA 376+50 R2



TYPICAL EX SECTION
 STA 374+00 R2 TO STA 374+50 R2

•SEE SHEET 3 FOR STATION EQUATIONS

MODEL: Default
 FILE NAME: p:\work\centley.com\PI\DOT\Documents\DOT_Offices\District_9\Projects\78902\CADD\Sheet\CA\Drawings\978902-Shld-Cvr_Seg_Index_Typ_Sched.dgn

USER NAME = William,Gray	DESIGNED -	REVISED -
	DRAWN -	REVISED -
PLOT SCALE = 94.4444' / in.	CHECKED -	REVISED -
PLOT DATE = 12/2/2022	DATE -	REVISED -

STATE OF ILLINOIS
 DEPARTMENT OF TRANSPORTATION

TYPICAL SECTIONS		
SCALE:	SHEET OF SHEETS	STA. TO STA.

F.A.S. RTE.	SECTION	COUNTY	TOTAL SHEETS	SHEET NO.
1909	225LP-2	UNION	13	5
ILLINOIS FED. AID PROJECT				

EARTHWORK SCHEDULE

LOCATION STATION TO STATION			LENGTH	EARTH EXCAVATION *
			INFO ONLY	
FAS 1909 (IL 127)			FEET	CU YD
376+40.00	TO	376+56.14	17	7
EQ STA 376+56.14 (BK) = STA 372+94.48 (AH)				
372+94.48	TO	377+00.00	406	1296
IL 127 EARTHWORK TOTALS				1303

* WASTE ALL EARTH EXCAVATION

MODEL: D:\nuil
 FILE NAME: p:\v\l\dot-cw\entby.com\FW\DOT\Documents\DOT_Offices\District_9\Projects\78902\CAD\Drawings\9\Proj\902-ShvA-Cvr_50q_Linrev_Typ_Sched.dgn

USER NAME = William,Gray	DESIGNED -	REVISED -
PLOT SCALE = 94.4444 ' / in.	CHECKED -	REVISED -
PLOT DATE = 12/2/2022	DATE -	REVISED -

**STATE OF ILLINOIS
DEPARTMENT OF TRANSPORTATION**

EARTH EXCAVATION SCHEDULE

SCALE: SHEET OF SHEETS STA. TO STA.

F.A.S. RTE.	SECTION	COUNTY	TOTAL SHEETS	SHEET NO.
1909	22SLP-2	UNION	13	6
CONTRACT NO. 78902				
ILLINOIS FED. AID PROJECT				



SOIL BORING LOG

Date 11/9/21

ROUTE IL 127 DESCRIPTION Slope Failure Investigation (West side of roadway) LOGGED BY L. Estel
SECTION 22SLP-2 LOCATION 0.3 mi N of Rhine Rd (Top of Backslope), SEC. 15, TWP. 11S, RNG. 2W, PM
COUNTY Union DRILLING METHOD Hollow Stem Auger (8" O.D., 3.25" I.D.) HAMMER TYPE up to SPT 140 lbs (HE: 86.5%)

File Name: S:\MATERIALS GEOTECHNICAL UNIT\GINT\PROJECTS\PROJECTS\FILE\UNION\POINT LOCATIONS\78902 SLOPE FAILURE L 127 @ KEVIN ALLEN.GPJ Data Template DOTE.MPL.T.GDT Date Printed 1/21/22
Latitude 37 33 48.5 Longitude -88 19 12.66 Datum NAD83 Job Number C-98-102-Z1

STRUCT. NO. _____		D E P T H (ft)	B L O W S (tsf)	U C S (%)	M O I S T (%)	Surface Water Elev.	D E P T H (ft)	B L O W S (tsf)	U C S (%)	M O I S T (%)
Station _____						ft				
BORING NO. 1-SF						Groundwater Elev.:				
Station 374+04						▽ First Encounter		ft		
Offset 62.5ft Rt						▽ Upon Completion		ft		
Ground Surface Elev. 573.3						▽ After _____ Hrs.		ft		
Stiff Black and Brown, Moist SILTY CLAY										
	571.30									
Stiff Brown, Grey and Tan, Moist SILTY CLAY			3							
			3	1.1	24					
			5	B						
	568.80									
Stiff Brown and Tan, Moist SILTY CLAY			3							
			3	1.0	26					
			5	B						
	566.30									
Medium Stiff Brown and Tan, Moist SILTY CLAY			2							
			2	0.6	27					
			3	B						
			2							
			2	0.9	25					
			3	B						
	561.30									
Stiff Brown, Moist SILTY CLAY			2							
			3	1.4	24					
			4	B						
			2							
			4	1.6	23					
			5	S						
	556.30									
Stiff Brown and Grey, Moist CLAY with SANDSTONE Peebles			3							
			4	1.7	30					
			6	S						

Bottom of hole @ 18.5 ft
No free water encountered
To convert "N" value to "N60", multiply by 1.44; Hammer efficiency = 86.5%
Ground surface elevation referenced to cross sections developed for Contract 78902

The Unconfined Compressive Strength (UCS) Failure Mode is indicated by (B-Bulge, S-Shear, P-Penetrometer, E-Estimated) Abbreviations W.O.H - Sampler Advanced By Weight of Hammer, W.O.P - Advanced by Weight of Pipe, B.S. - Before Seating The SPT (N value) is the sum of the last two blow values in each sampling zone (AASHTO T206) BBS, from 137 (Rev. 8-99)

MODEL: Default
FILE NAME: pwa\ltdot-cw-bentley.com\FWIDOT\Documents\DOT_Offices\District 9\Projects\78902\CADD\Data\CAD\Sheets\0978902-SHA-CV-Sog_Inrev_Typ_Sched.dgn

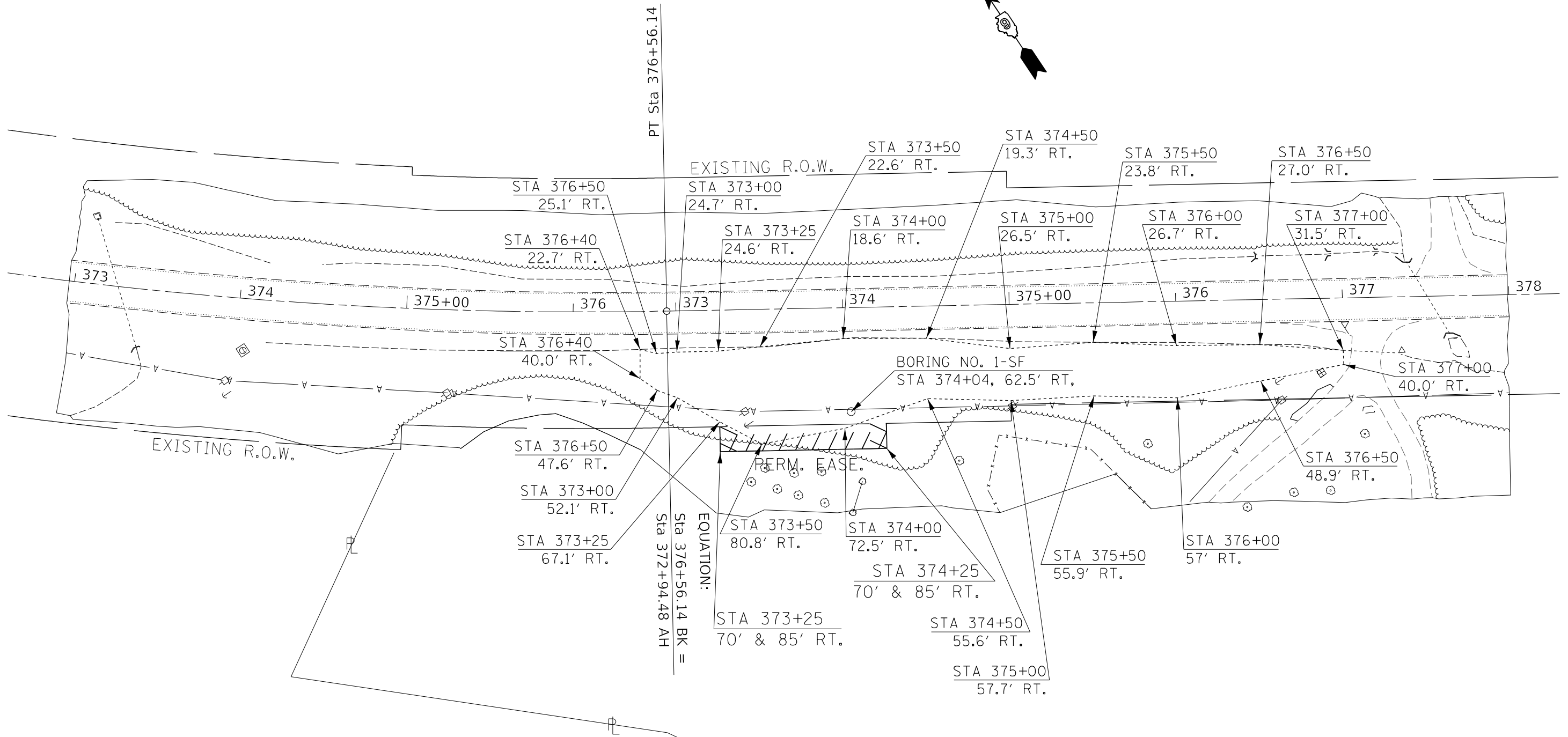
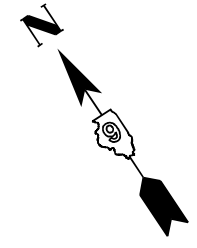
USER NAME = William.Gray	DESIGNED -	REVISED -
DRAWN -	REVISOR -	
PLOT SCALE = 94.4444 ' / in.	CHECKED -	REVISED -
PLOT DATE = 12/2/2022	DATE -	REVISED -

**STATE OF ILLINOIS
DEPARTMENT OF TRANSPORTATION**

SOIL BORING LOG

SCALE: SHEET OF SHEETS STA. TO STA.

F.A.S. RTE. 1909	SECTION 22SLP-2	COUNTY UNION	TOTAL SHEETS 13	SHEET NO. 7
CONTRACT NO. 78902				
ILLINOIS FED. AID PROJECT				



PT Sta 376+56.14
 Sta 376+56.14 BK =
 Sta 372+94.48 AH

EQUATION:

STA 373+25
 70' & 85' RT.

STA 374+00
 72.5' RT.
 STA 374+25
 70' & 85' RT.

STA 374+50
 55.6' RT.

STA 375+00
 57.7' RT.

STA 375+50
 55.9' RT.

STA 376+00
 57' RT.

STA 376+50
 48.9' RT.

STA 377+00
 40.0' RT.

BORING NO. 1-SF
 STA 374+04, 62.5' RT.

STA 376+40
 40.0' RT.

STA 376+50
 47.6' RT.

STA 373+00
 52.1' RT.

STA 373+25
 67.1' RT.

STA 376+40
 22.7' RT.

STA 376+50
 25.1' RT.

EXISTING R.O.W.
 STA 373+00
 24.7' RT.

STA 373+25
 24.6' RT.

STA 374+00
 18.6' RT.

STA 373+50
 22.6' RT.

STA 374+50
 19.3' RT.

STA 375+00
 26.5' RT.

STA 375+50
 23.8' RT.

STA 376+00
 26.7' RT.

STA 376+50
 27.0' RT.

STA 377+00
 31.5' RT.

LEGEND

----- PR CONSTRUCTION LIMITS

MODEL: Default
 FILE NAME: p:\v\l\dot-c\w\entley.com\p\w\DOT\Documents\DOT_Offices\District_9\Projects\78902\CAD\Drawings\78902-2\Sheet-8\8-Plan-Profile.dgn

USER NAME = William,Gray	DESIGNED -	REVISED -
PLOT SCALE = 56,6667' / in.	DRAWN -	REVISED -
PLOT DATE = 12/2/2022	CHECKED -	REVISED -
	DATE -	REVISED -

STATE OF ILLINOIS
DEPARTMENT OF TRANSPORTATION

IL 127 (FAS 1909) PLAN LAYOUT			
SCALE:	SHEET	OF	SHEETS
	STA.	TO	STA.

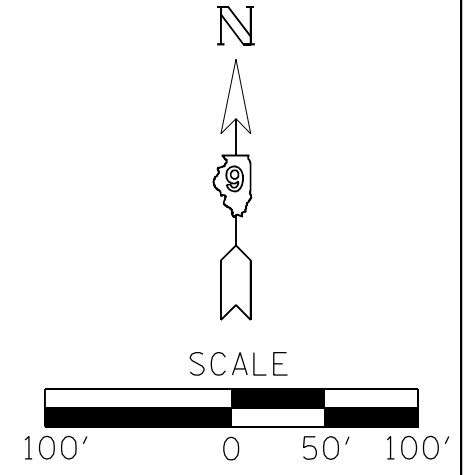
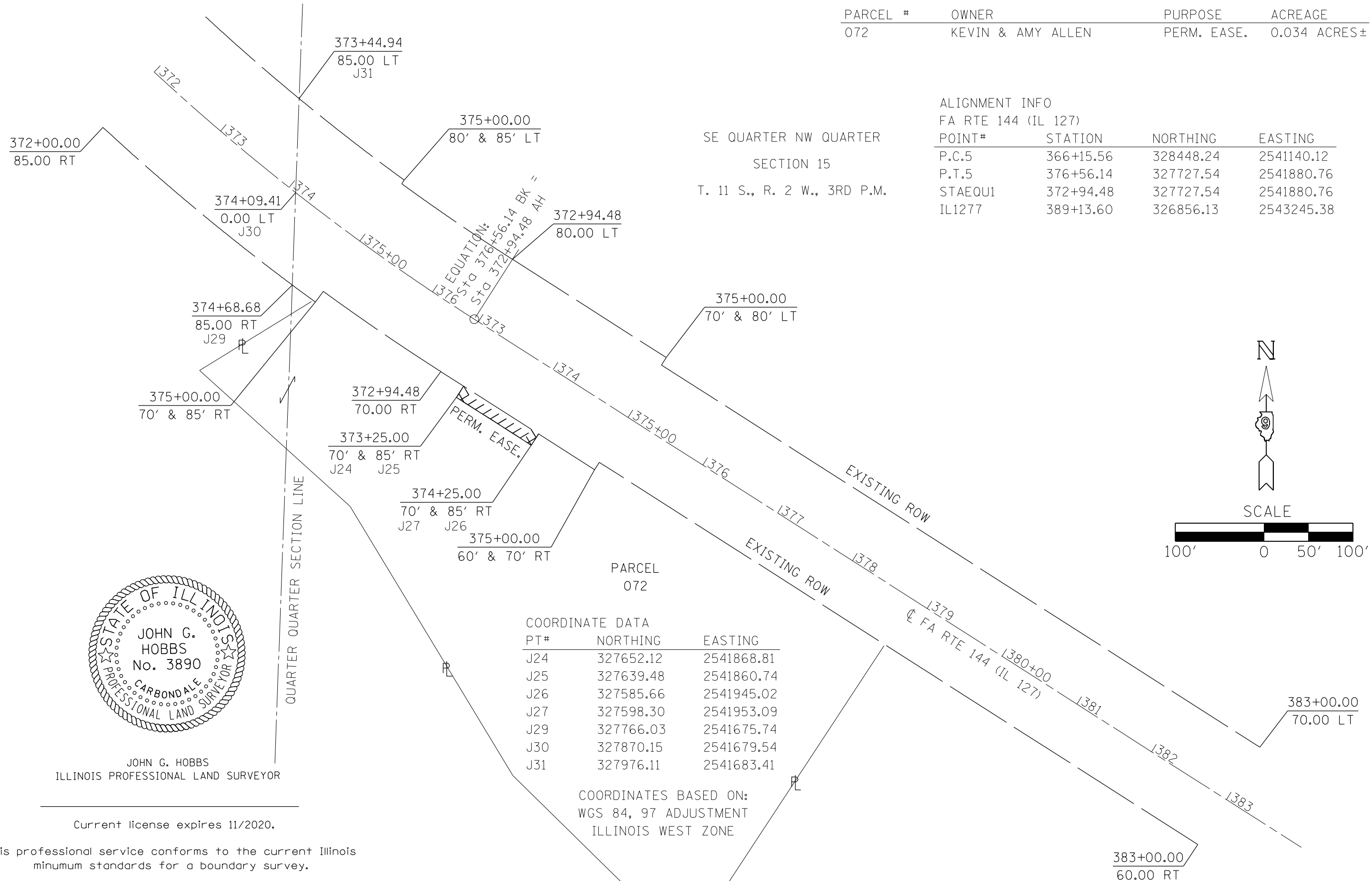
F.A.S. RTE. 1909	SECTION 225LP-2	COUNTY UNION	TOTAL SHEETS 12	SHEET NO. 8
ILLINOIS FED. AID PROJECT				
CONTRACT NO. 78902				

PARCEL #	OWNER	PURPOSE	ACREAGE
072	KEVIN & AMY ALLEN	PERM. EASE.	0.034 ACRES±

ALIGNMENT INFO
FA RTE 144 (IL 127)

POINT#	STATION	NORTHING	EASTING
P.C.5	366+15.56	328448.24	2541140.12
P.T.5	376+56.14	327727.54	2541880.76
STAEQU1	372+94.48	327727.54	2541880.76
IL1277	389+13.60	326856.13	2543245.38

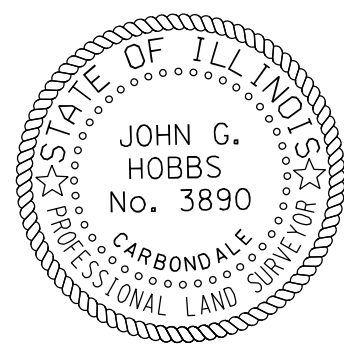
SE QUARTER NW QUARTER
SECTION 15
T. 11 S., R. 2 W., 3RD P.M.



COORDINATE DATA

PT#	NORTHING	EASTING
J24	327652.12	2541868.81
J25	327639.48	2541860.74
J26	327585.66	2541945.02
J27	327598.30	2541953.09
J29	327766.03	2541675.74
J30	327870.15	2541679.54
J31	327976.11	2541683.41

COORDINATES BASED ON:
WGS 84, 97 ADJUSTMENT
ILLINOIS WEST ZONE



JOHN G. HOBBS
ILLINOIS PROFESSIONAL LAND SURVEYOR

Current license expires 11/2020.

This professional service conforms to the current Illinois minimum standards for a boundary survey.

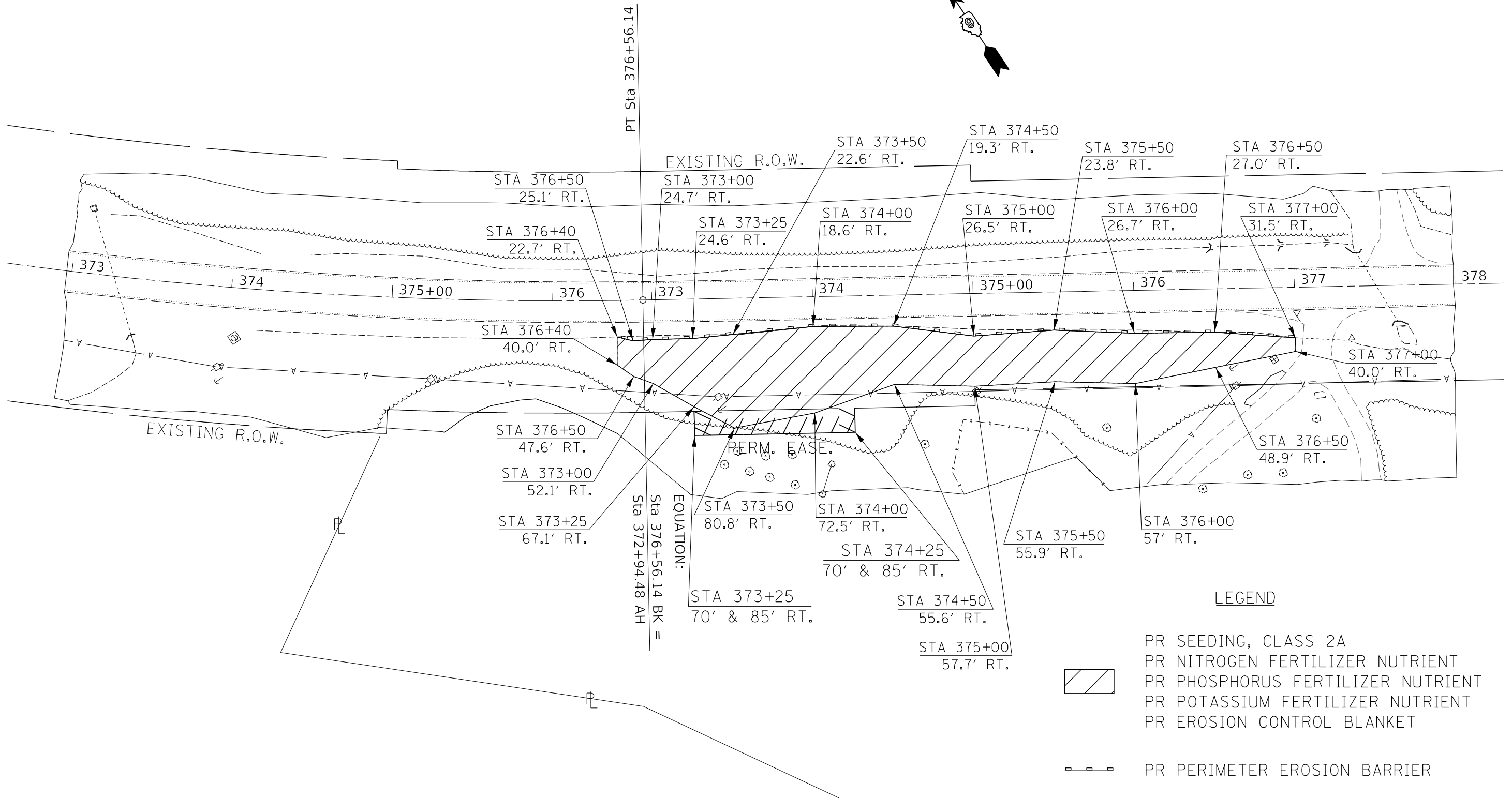
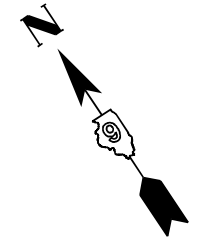
MODEL: Default
FILE NAME: p:\m\l\c\p\rentley.com\FM\DOT\Documents\DOT_Offices\District_9\Projects\78902\CADData\CADsheets\078902-shr-row.dgn

USER NAME = William,Gray	DESIGNED - _____	REVISED - _____
PLOT SCALE = 94.4444' / in.	DRAWN - _____	REVISED - _____
PLOT DATE = 12/2/2022	CHECKED - _____	REVISED - _____
	DATE - _____	REVISED - _____

STATE OF ILLINOIS
DEPARTMENT OF TRANSPORTATION

RIGHT OF WAY	
SCALE: 1" = 100'	SHEET OF SHEETS
STA. 372+00	TO STA. 383+00

F.A.S. RTE.	SECTION	COUNTY	TOTAL SHEETS	SHEET NO.
1909	225LP-2	UNION	13	9
CONTRACT NO. 78902				



PT Sta 376+56.14
 Sta 376+56.14 BK =
 Sta 372+94.48 AH =

EQUATION:

STA 373+25 70' & 85' RT.
 STA 374+25 70' & 85' RT.
 STA 373+50 80.8' RT.
 STA 374+00 72.5' RT.
 STA 375+50 55.9' RT.
 STA 376+00 57' RT.
 STA 373+00 52.1' RT.
 STA 374+00 55.6' RT.
 STA 375+00 57.7' RT.
 STA 376+00 48.9' RT.
 STA 373+25 67.1' RT.
 STA 374+00 70' & 85' RT.
 STA 375+00 55.9' RT.
 STA 376+00 57' RT.

LEGEND

- PR SEEDING, CLASS 2A
- PR NITROGEN FERTILIZER NUTRIENT
- PR PHOSPHORUS FERTILIZER NUTRIENT
- PR POTASSIUM FERTILIZER NUTRIENT
- PR EROSION CONTROL BLANKET
- PR PERIMETER EROSION BARRIER

MODEL: Default
 FILE NAME: p:\v\l\dot-c\w\entley.com\FM\DOT\Documents\DOT_Offices\District_9\Projects\78902\CADD\Sheet\CA\Drawings\78902-5hcc-Fbar-Prof.dgn

USER NAME = William,Gray	DESIGNED -	REVISED -
PLOT SCALE = 56,6667' / in.	DRAWN -	REVISED -
PLOT DATE = 12/2/2022	CHECKED -	REVISED -
	DATE -	REVISED -

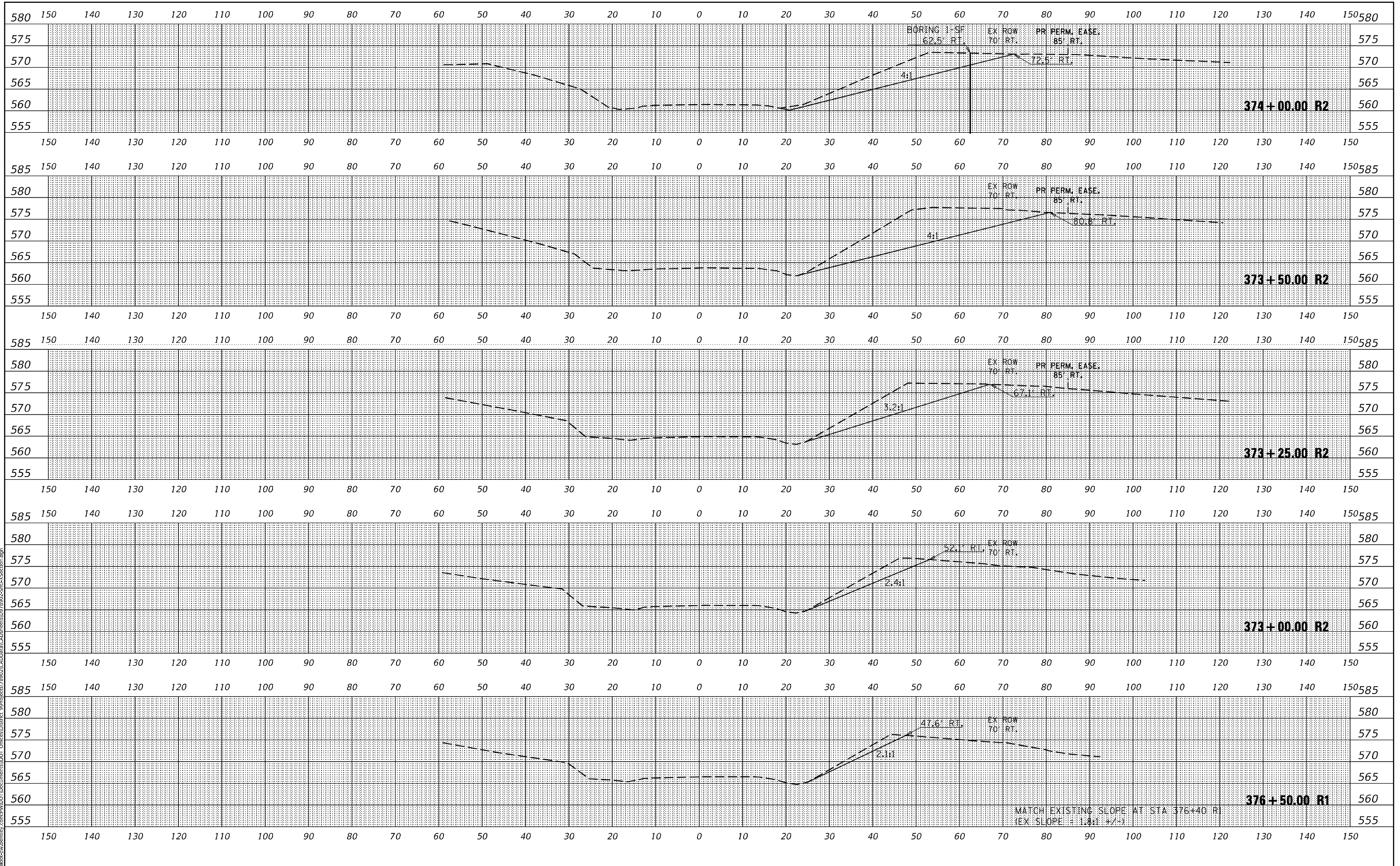
STATE OF ILLINOIS
DEPARTMENT OF TRANSPORTATION

LANDSCAPING & EROSION CONTROL PLAN	
SCALE:	SHEET OF SHEETS STA. TO STA.

F.A.S. RTE. 1909	SECTION 22SLP-2	COUNTY UNION	TOTAL SHEETS 12	SHEET NO. 10
CONTRACT NO. 78902				
ILLINOIS FED. AID PROJECT				

DATE	
BY	
FINAL SURVEY	SURVEYED
NOTE BOOK	PLOTTED
NO.	REPLATE
	AREAS CHECKED

DATE	
BY	
ORIGINAL SURVEY	SURVEYED
NOTE BOOK	PLOTTED
NO.	REPLATE
	AREAS CHECKED



MODEL: IL127
 FILE NAME: P:\Work\pawbentley.com\PI\DOT\Documents\DOT Offices\District 9\Projects\78902\CADD\Sheet\CA\Drawings\0978902-S11-X-Section.dgn

USER NAME = William.Gray	DESIGNED - _____	REVISED - _____
PLOT SCALE = 18,8889' / in.	DRAWN - _____	REVISED - _____
PLOT DATE = 12/2/2022	CHECKED - _____	REVISED - _____
	DATE - _____	REVISED - _____

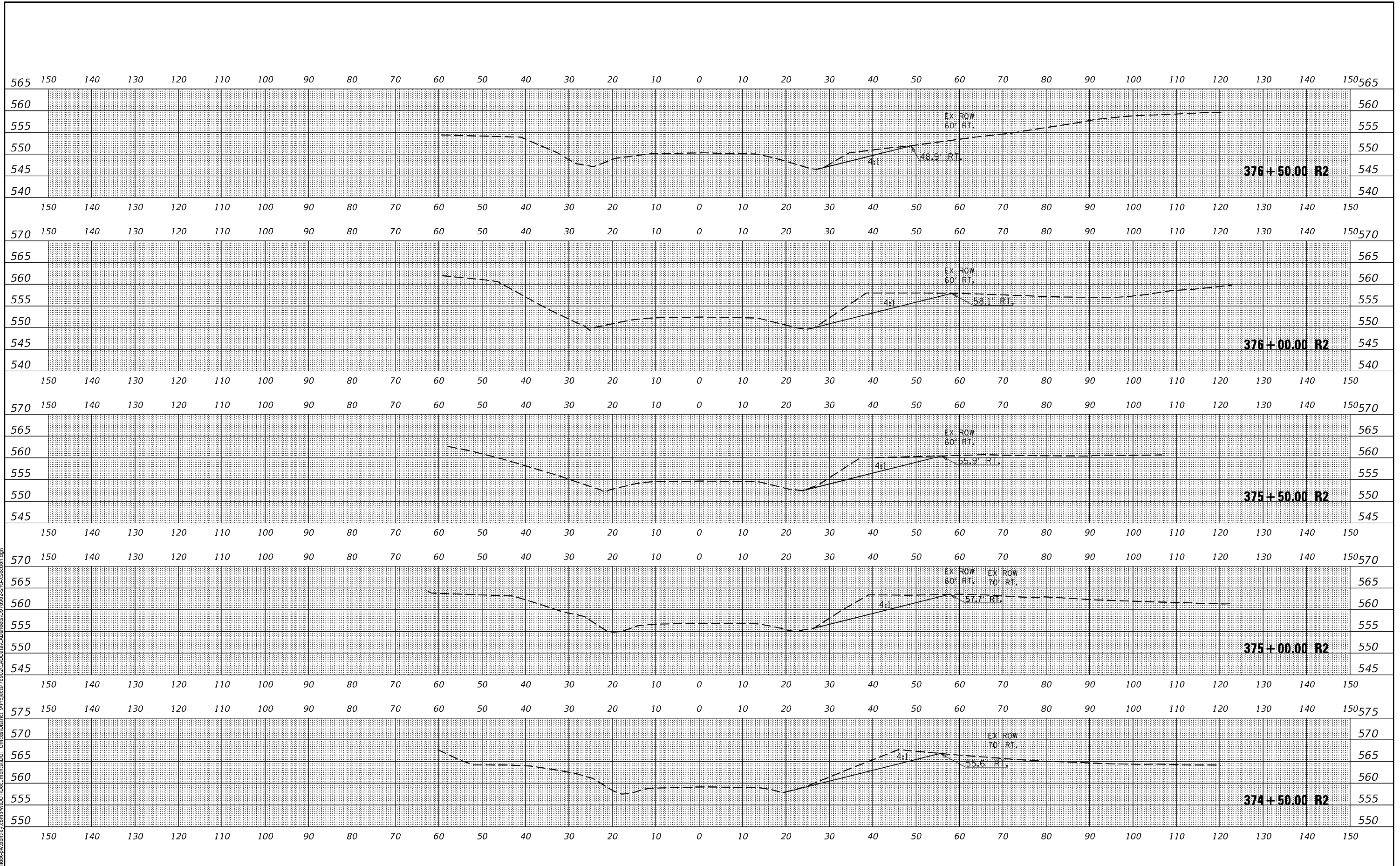
**STATE OF ILLINOIS
 DEPARTMENT OF TRANSPORTATION**

CROSS SECTIONS			
SCALE:	SHEET	OF	SHEETS
STA. 376+50.00 R1 TO STA. 374+00.00 R2			

F.A.S. RTE. 1909	SECTION 22SLP-2	COUNTY UNION	TOTAL SHEETS 13	SHEET NO. 11
CONTRACT NO. 78902				
ILLINOIS FED. AID PROJECT				

DATE	
BY	
FINAL SURVEY	
SURVEYED	
PLOTTED	
REPLACED	
NOTE BOOK	
AREAS CHECKED	
NO.	

DATE	
BY	
ORIGINAL SURVEY	
SURVEYED	
PLOTTED	
REPLACED	
NOTE BOOK	
AREAS CHECKED	
NO.	



MODEL: IL127
 FILE NAME: P:\Work\pawbentley.com\PM\DOT\DC\umms\DOT Offices\District 17\8902\CADD\DATA\CAD\Sheets\09\8902-STA-X-Section.dgn

USER NAME = William.Gray	DESIGNED - _____	REVISED - _____
PLOT SCALE = 18,8889' / in.	DRAWN - _____	REVISED - _____
PLOT DATE = 12/2/2022	CHECKED - _____	REVISED - _____
	DATE - _____	REVISED - _____

**STATE OF ILLINOIS
 DEPARTMENT OF TRANSPORTATION**

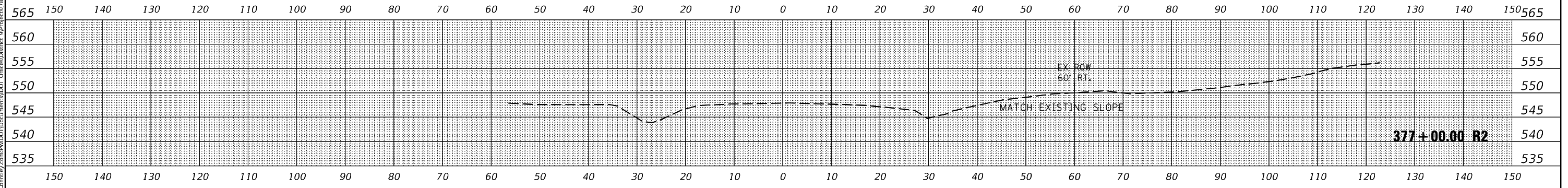
CROSS SECTIONS			
SCALE:	SHEET	OF	SHEETS
STA. 374+50.00 R2 TO STA. 376+50.00 R2			

F.A.S. RTE. 1909	SECTION 225LP-2	COUNTY UNION	TOTAL SHEETS 13	SHEET NO. 12
CONTRACT NO. 78902				
ILLINOIS FED. AID PROJECT				

FINAL SURVEY	SURVEYED	DATE
NOTE BOOK NO.	PLOTTED	BY
	REPLACED	
	AREAS CHECKED	

ORIGINAL SURVEY	SURVEYED	DATE
NOTE BOOK NO.	PLOTTED	BY
	REPLACED	
	AREAS CHECKED	

MODEL: IL127
 FILE NAME: P:\Middlesex\unl\com\p\DOT\Documents\DOT Offices\District 9\Projects\78902\CADData\CAD Sheets\0978902-Slu-X-Section.dgn



USER NAME = William.Gray	DESIGNED - _____	REVISED - _____
PLOT SCALE = 18,8889' / in.	DRAWN - _____	REVISED - _____
PLOT DATE = 12/2/2022	CHECKED - _____	REVISED - _____
	DATE - _____	REVISED - _____

**STATE OF ILLINOIS
 DEPARTMENT OF TRANSPORTATION**

CROSS SECTIONS			
SCALE:	SHEET	OF	SHEETS
			STA. 377+00.00 R2

F.A.S. RTE. 1909	SECTION 225LP-2	COUNTY UNION	TOTAL SHEETS 13	SHEET NO. 13
ILLINOIS FED. AID PROJECT			CONTRACT NO. 78902	