

STATE OF ILLINOIS  
DEPARTMENT OF TRANSPORTATION

F.A.P. RTE.	SECTION	COUNTY	TOTAL SHEETS	SHEET NO.
649	(28, 17, 16) SFY	LIVINGSTON	9	1
		ILLINOIS	CONTRACT NO. 66M37	

**INDEX OF SHEETS**

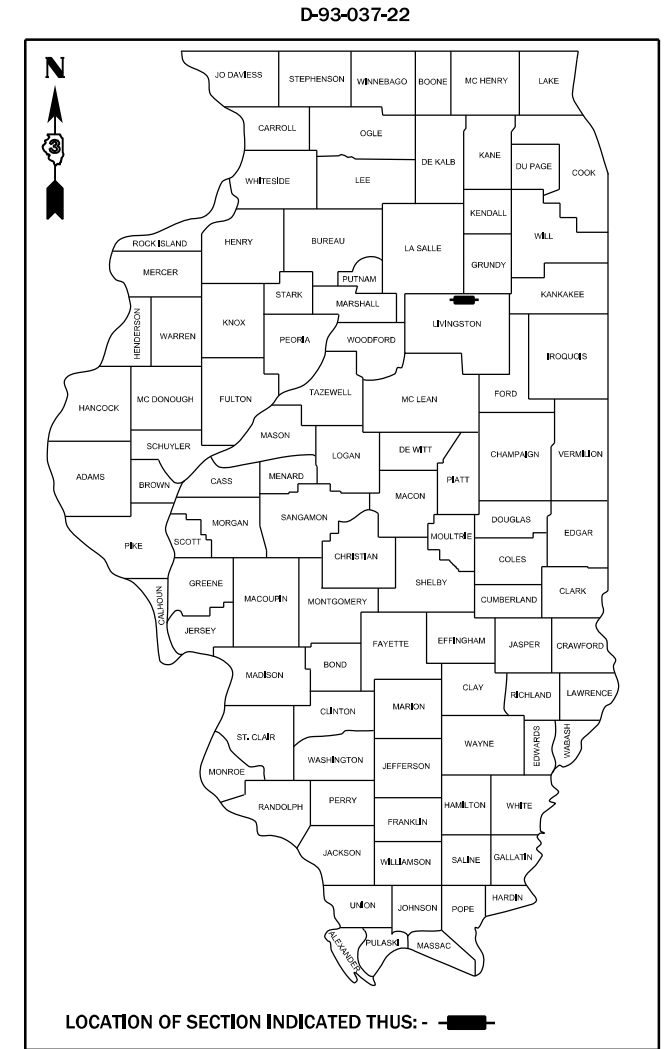
- 1 COVER SHEET
- 2 GENERAL NOTES
- 3-4 SUMMARY OF QUANTITIES
- 5 TYPICAL SECTIONS
- 6-7 SCHEDULES
- 8-9 DETAILS

**HIGHWAY STANDARDS**

- 000001-08 STANDARD SYMBOLS, ABBREVIATIONS AND PATTERNS
- 001006 DECIMAL OF AN INCH AND OF A FOOT
- 406201-01 MAILBOX TURNOUT
- 482001-02 HMA SHOULDER ADJACENT TO FLEXIBLE PAVEMENT
- 642006-01 SHOULDER RUMBLE STRIPS, 8 INCH
- 701006-05 OFF-ROAD OPERATIONS 2L, 2W, 15' (4.5 m) TO 24" (600 mm) FROM PAVEMENT EDGE
- 701311-03 LANE CLOSURE, 2L, 2W, MOVING OPERATIONS - DAY ONLY
- 701326-04 LANE CLOSURE, 2L, 2W, PAVEMENT WIDENING, FOR SPEEDS ≥ 45 MPH
- 667101-02 PERMANENT SURVEY MARKERS
- 701901-08 TRAFFIC CONTROL DEVICES

**PROPOSED  
HIGHWAY PLANS**

FAP ROUTE 649 (IL 17)  
SECTION (28, 17, 16) SFY  
PROJECT: HSIP - NE1U (845)  
SHOULDER WIDENING AND RUMBLE STRIPS  
LIVINGSTON COUNTY  
C-93-060-22



IL 17 - MINOR ARTERIAL  
2021 ADT = 1600  
P.V. = 77.2% S.U. = 5.6% M.U. = 17.2%

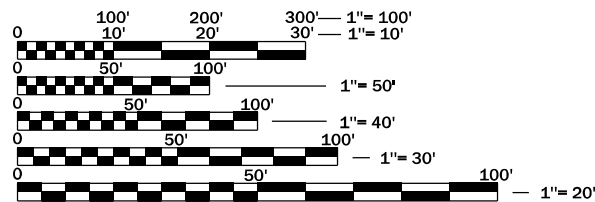
STATE OF ILLINOIS  
DEPARTMENT OF TRANSPORTATION

SUBMITTED December 14, 2022

*[Signature]* REGIONAL ENGINEER  
February 3, 2023

*[Signature]* ENGINEER OF DESIGN AND ENVIRONMENT  
February 3, 2023

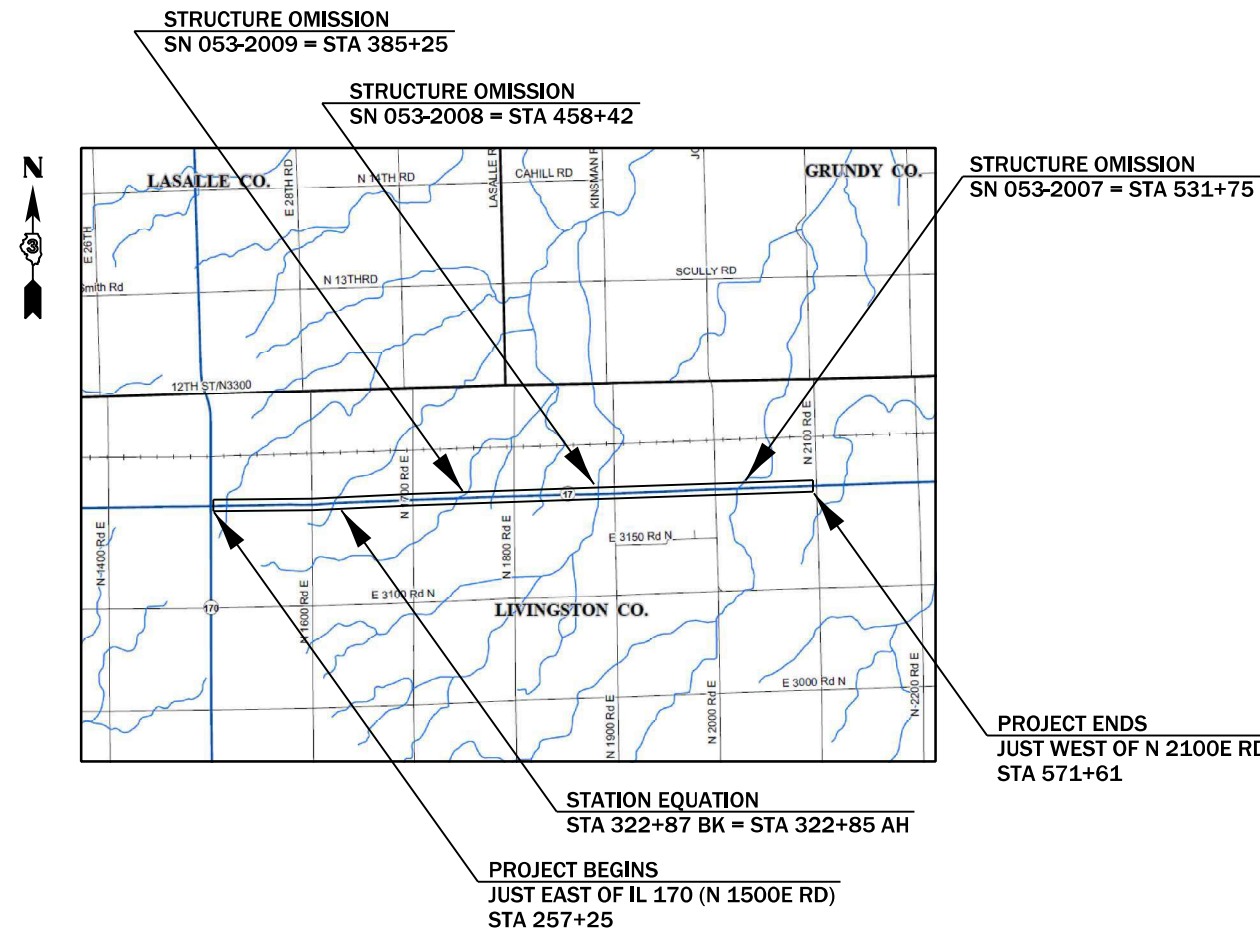
*[Signature]* DIRECTOR OF HIGHWAYS PROJECT IMPLEMENTATION



FULL SIZE PLANS HAVE BEEN PREPARED USING STANDARD ENGINEERING SCALES. REDUCED SIZED PLANS WILL NOT CONFORM TO STANDARD SCALES. IN MAKING MEASUREMENTS ON REDUCED PLANS, THE ABOVE SCALES MAY BE USED.

J.U.L.I.E.  
JOINT UTILITY LOCATION INFORMATION FOR EXCAVATION  
1-800-892-0123  
OR 811

PROJECT ENGINEER: JOE KANNEL, P.E.  
UNIT CHIEF: MARC BUDZYNSKI, P.E.  
DISTRICT 3 NO. (815) 434-6131  
CONTRACT NO. 66M37



GROSS LENGTH = 31,587 FT. = 5.98 MILE  
NET LENGTH = 29,143 FT. = 5.52 MILE

PRINTED BY THE AUTHORITY  
OF THE STATE OF ILLINOIS

**GENERAL NOTES**

THE HMA SURFACE OF ALL MAILBOX TURNOUTS, PRIVATE ENTRANCES, COMMERCIAL ENTRANCES, AND SIDE ROADS SHALL BE MADE NEATLY, IN A WORKMANLIKE MANNER, AND SHALL ACCURATELY CONFORM TO THE SHAPES AND DIMENSIONS SHOWN ON THE PLAN DETAILS. IF REQUIRED BY THE ENGINEER, THE CONTRACTOR SHALL SAW CUT THE HMA SURFACE TO CONFORM TO THE SHAPES AND DIMENSIONS SHOWN ON THE PLAN DETAILS. THIS WORK WILL BE INCLUDED IN THE COST OF THE HMA SURFACE.

THE ENGINEER WILL BE THE SOLE JUDGE CONCERNING CURING TIME FOR THE VARIOUS HMA LIFTS.

THE FOLLOWING RATES OF APPLICATION HAVE BEEN USED IN CALCULATING PLAN QUANTITIES:

HMA RESURFACING	112	LBS / SQ YD / IN
-----------------	-----	------------------

THE CONTRACTOR SHALL CONTACT JULIE AT LEAST 48 HOURS PRIOR TO EXCAVATION TO DETERMINE WHICH UTILITIES ARE IN THE AREA.

THE ADVANCED YELLOW FLASHING BEACONS FOR THE INTERSECTION OF IL 17 AND IL 170 WILL REQUIRE A CABLE LOCATE BY IDOT.

**COMMITMENTS:**

HMA MIXTURE REQUIREMENT TABLE		
LOCATION(S) :	ENTIRE PROJECT	ENTIRE PROJECT
MIXTURE USE(S) :	SHOULDER BOTTOM LIFT(S)	SHOULDER TOP LIFT (2")
BINDER GRADE (PG) :	PG 64-22	PG 64-22
DESIGN AIR VOIDS:	4.0% @ N50	4.0% @ N50
MIXTURE COMPOSITION: (MIXTURE GRADATION)	IL-19.0	IL-9.5 FG
FRICTION AGGREGATE :	-	MIXTURE C
MIXTURE WEIGHT:	112.0 LB/SY/IN	112.0 LB/SY/IN
QUALITY MANAGEMENT PROGRAM:	QC/QA	QC/QA
SUBLOT SIZE:	N/A	N/A
DENSITY TEST METHOD:	CORES	CORES
MATERIAL TRANSFER DEVICE (REQUIRED?):	NO	NO

STATE OF ILLINOIS  
DEPARTMENT OF TRANSPORTATION  
DISTRICT THREE  
AS BUILT INFORMATION

\_\_\_\_\_  
SUPERVISING CONSTRUCTION FIELD ENGINEER

\_\_\_\_\_  
RESIDENT ENGINEER / TECHNICIAN

START & END DATES  
OF CONSTRUCTION:

INSPECTORS:

STATE OF ILLINOIS  
DEPARTMENT OF TRANSPORTATION  
DISTRICT THREE

PREPARED BY: \_\_\_\_\_  
DISTRICT STUDIES & PLANS ENGINEER

DATE: \_\_\_\_\_

EXAMINED BY: \_\_\_\_\_  
DISTRICT CONSTRUCTION ENGINEER

\_\_\_\_\_  
DISTRICT MATERIALS ENGINEER

\_\_\_\_\_  
DISTRICT OPERATIONS ENGINEER

**STATE OF ILLINOIS  
DEPARTMENT OF TRANSPORTATION**

**GENERAL NOTES**

SCALE: SHEET OF SHEETS STA. TO STA.

F.A.P. RTE.	SECTION	COUNTY	TOTAL SHEETS	SHEET NO.
649	(28, 17, 16) SFY	LIVINGSTON	9	2
CONTRACT NO. 66M37				
ILLINOIS FED. AID PROJECT				

MODEL: Default  
 FILE: \\mace-pc\public\sw\benfley.com\PHWDOT\Documents\DOT Offices\Burlin\3\Projects\0366M37\CADD\0366M37-2ht-cover.dgn

USER NAME = Marc.Budzynski	DESIGNED -	REVISED -
DRAWN -	REVISOR -	
PLOT SCALE = 100.0000 ' / in.	CHECKED -	REVISED -
PLOT DATE = 12/13/2022	DATE -	REVISED -

**STATE OF ILLINOIS  
DEPARTMENT OF TRANSPORTATION**

<b>SUMMARY OF QUANTITIES</b>			
SCALE:	SHEET	OF	SHEETS
	STA.		TO STA.

F.A.P. RTE.	SECTION	COUNTY	TOTAL SHEETS	SHEET NO.
649	(28, 17, 16) SFY	LIVINGSTON	9	3
CONTRACT NO. 66M37				
ILLINOIS FED. AID PROJECT				

CODE NO.	ITEM	UNIT	TOTAL QUANTITY	CONSTR. CODE	
				90% FED 10% STATE	SAFETY 0021 RURAL
40600290	BITUMINOUS MATERIALS (TACK COAT)	POUND	11658		11658
40800050	INCIDENTAL HOT-MIX ASPHALT SURFACING	TON	26.6		26.6
44000157	HOT-MIX ASPHALT SURFACE REMOVAL, 2"	SQ YD	232		232
48203029	HOT-MIX ASPHALT SHOULDERS, 8"	SQ YD	25656		25656
64200108	SHOULDER RUMBLE STRIPS, 8 INCH	FOOT	57406		57406
* 66700205	PERMANENT SURVEY MARKERS, TYPE I	EACH	1		1
* 66900200	NON-SPECIAL WASTE DISPOSAL	CU YD	197		197
* 66900530	SOIL DISPOSAL ANALYSIS	EACH	3		3
* 66901001	REGULATED SUBSTANCES PRE-CONSTRUCTION PLAN	L SUM	1		1
* 66901003	REGULATED SUBSTANCES FINAL CONSTRUCTION REPORT	L SUM	1		1
* 66901006	REGULATED SUBSTANCES MONITORING	CAL DA	3		3
67100100	MOBILIZATION	L SUM	1		1
70100500	TRAFFIC CONTROL AND PROTECTION, STANDARD 701326	L SUM	1		1
70103815	TRAFFIC CONTROL SURVEILLANCE	CAL DA	10		10

\*= SPECIALTY ITEM

Model: Default  
 File: M:\MSR\_Plan\Ildot-cw\benlley.com\PIWDOT\Documents\DOT Offices\Ildot\dot\_3\Projects\0366M37\CADD\dot\_3\CAD\dot\_3\alt-cover.dgn

USER NAME = Marc.Budzynski	DESIGNED -	REVISED -
DRAWN -	REVISIED -	
PLOT SCALE = 100.0000 ' / in.	CHECKED -	REVISED -
PLOT DATE = 12/13/2022	DATE -	REVISED -

**STATE OF ILLINOIS  
 DEPARTMENT OF TRANSPORTATION**

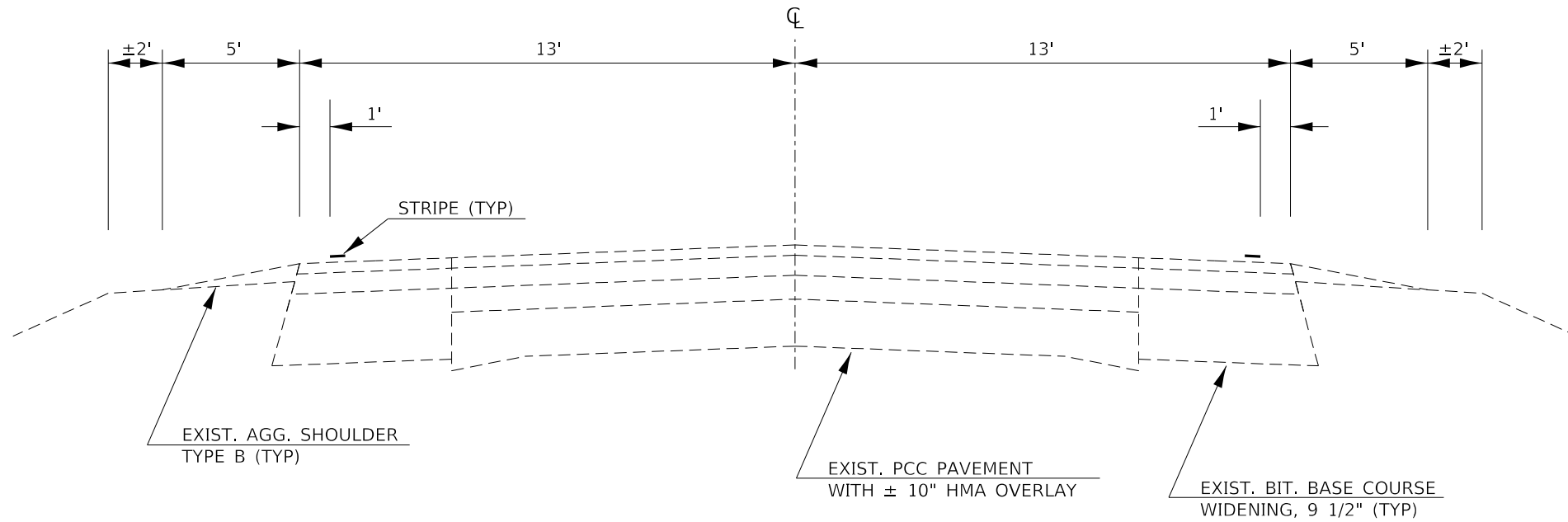
**SUMMARY OF QUANTITIES**

SCALE: SHEET OF SHEETS STA. TO STA.

F.A.P. RTE.	SECTION	COUNTY	TOTAL SHEETS	SHEET NO.
649	(28, 17, 16) SFY	LIVINGSTON	9	4
CONTRACT NO. 66M37				
ILLINOIS FED. AID PROJECT				

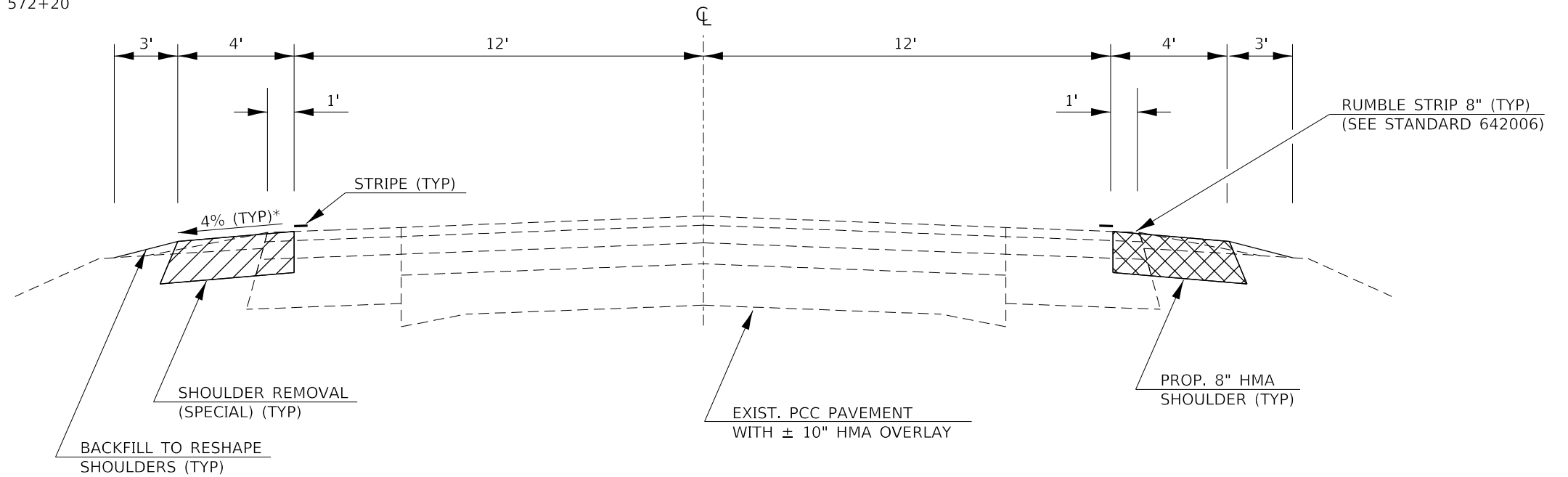
CODE NO.	ITEM	UNIT	TOTAL QUANTITY	CONSTR. CODE
				90% FED 10% STATE
				SAFETY
				0021
				RURAL
* 78009004	MODIFIED URETHANE PAVEMENT MARKING - LINE 4"	FOOT	123644	123644
X0800001	SHOULDER REMOVAL (SPECIAL)	SQ YD	25656	25656
Z0030850	TEMPORARY INFORMATION SIGNING	SQ FT	84	84

\*= SPECIALTY ITEM



**EXISTING TYPICAL SECTION**

STA 256+35 TO STA 322+87  
 STA 322+87 BK = STA 322+85 AH  
 STA 322+85 TO STA 382+23  
 STA 388+23 TO STA 455+34  
 STA 461+60 TO STA 528+85  
 STA 534+27 TO STA 572+20



**PROPOSED TYPICAL SECTION**

STA 256+35 TO STA 322+87  
 STA 322+87 BK = STA 322+85 AH  
 STA 322+85 TO STA 382+23  
 STA 388+23 TO STA 455+34  
 STA 461+60 TO STA 528+85  
 STA 534+27 TO STA 572+20

\*REFER TO STANDARD 482001 IN AREAS OF SUPERELEVATION

MODEL: Default  
 FILE: \\mdele-pc\public\civ\benfley.com\PHWDOT\Documents\DOT Offices\Benfley, B\Projects\0366M37\CADD\0366M37-dtr-cover.dgn

USER NAME = Marc.Budzynski	DESIGNED -	REVISED -
	DRAWN -	REVISED -
PLOT SCALE = 100.0000' / in.	CHECKED -	REVISED -
PLOT DATE = 12/14/2022	DATE -	REVISED -

**STATE OF ILLINOIS  
 DEPARTMENT OF TRANSPORTATION**

<b>TYPICAL SECTIONS</b>	
SCALE:	SHEET OF SHEETS STA. TO STA.

F.A.P. RTE.	SECTION	COUNTY	TOTAL SHEETS	SHEET NO.
649	(28, 17, 16) SFY	LIVINGSTON	9	5
CONTRACT NO. 66M37				
ILLINOIS FED. AID PROJECT				

**SHOULDER REMOVAL & REPLACEMENT SCHEDULE**

LOCATION			SIDE	LENGTH	SHOULDER REMOVAL (SPECIAL)	HMA SHOULDERS 8"	BIT MTLs TACK COAT	SHOULDER RUMBLE STRIPS, 8"	*MOD URETH PVMT MARKING WHITE 4"
STA	TO	STA	LT / RT	FOOT	SQ YD	SQ YD	POUND	FOOT	FOOT
IL 170 (N 1500E RD) = STA 256+35									
257+25	TO	257+43	LT	18	8	8	4	-	72
257+43	TO	258+92	LT & RT	149	133	133	60	-	596
258+92	TO	259+64	LT	72	32	32	15	72	288
259+64	TO	272+94	LT & RT	1330	1183	1183	532	2660	5320
272+94	TO	275+19	LT	225	100	100	45	225	900
275+19	TO	277+34	LT & RT	215	192	192	86	430	860
277+34	TO	278+38	LT	104	47	47	21	104	416
278+38	TO	308+68	LT & RT	3030	2694	2694	1212	6060	12120
N 1600E RD = STA 309+20									
309+68	TO	322+87	LT & RT	1319	1173	1173	528	2638	5276
STATION EQUATION STA 322+87 BK = STA 322+85 AH									
322+85	TO	361+26	LT & RT	3841	3415	3415	1537	7682	15364
N 1700E RD = STA 361+80									
362+26	TO	382+01	LT & RT	1975	1756	1756	790	3950	7900
382+01	TO	382+23	LT	22	10	10	5	22	88
STRUCTURE OMISSION SN 053-2009 = STA 385+25									
388+23	TO	414+06	LT & RT	2583	2296	2296	1034	5166	10332
N 1800E RD = STA 414+60									
415+12	TO	455+21	LT & RT	4009	3564	3564	1604	8018	16036
455+21	TO	455+34	LT	13	6	6	3	13	52
STRUCTURE OMISSION SN 053-2008 = STA 458+42									
461+60	TO	466+34	LT & RT	474	422	422	190	948	1896
466+34	TO	466+43	RT	9	4	4	2	9	36
N 1900E RD = STA 466+90									
467+44	TO	518+81	LT & RT	5137	4567	4567	2055	10274	20548
518+81	TO	518+96	RT	15	7	7	3	15	60
N 2000E RD = STA 519+45									
519+98	TO	520+09	RT	11	5	5	3	11	44
520+09	TO	528+63	LT & RT	854	760	760	342	1708	3416
528+63	TO	528+85	LT	22	10	10	5	22	88
STRUCTURE OMISSION SN 053-2007 = STA 531+75									
534+27	TO	534+87	RT	60	27	27	12	60	240
534+87	TO	571+32	LT & RT	3645	3240	3240	1458	7290	14580
571+32	TO	571+61	RT	29	13	13	6	29	116
N 2100E RD = STA 572+20									
<b>TOTAL</b>				<b>29143</b>	<b>25656</b>	<b>25656</b>	<b>11548</b>	<b>57406</b>	<b>123644</b>

\*QUANTITY REPRESENTS TWO SEPARATE APPLICATIONS

MODEL: Default  
 FILE: M:\M&E - providers-cw-bentley.com\PROJECTS\DOT Offices\Bentley - Projects\0366M37\CADD\0366M37-2ht-cover.dgn

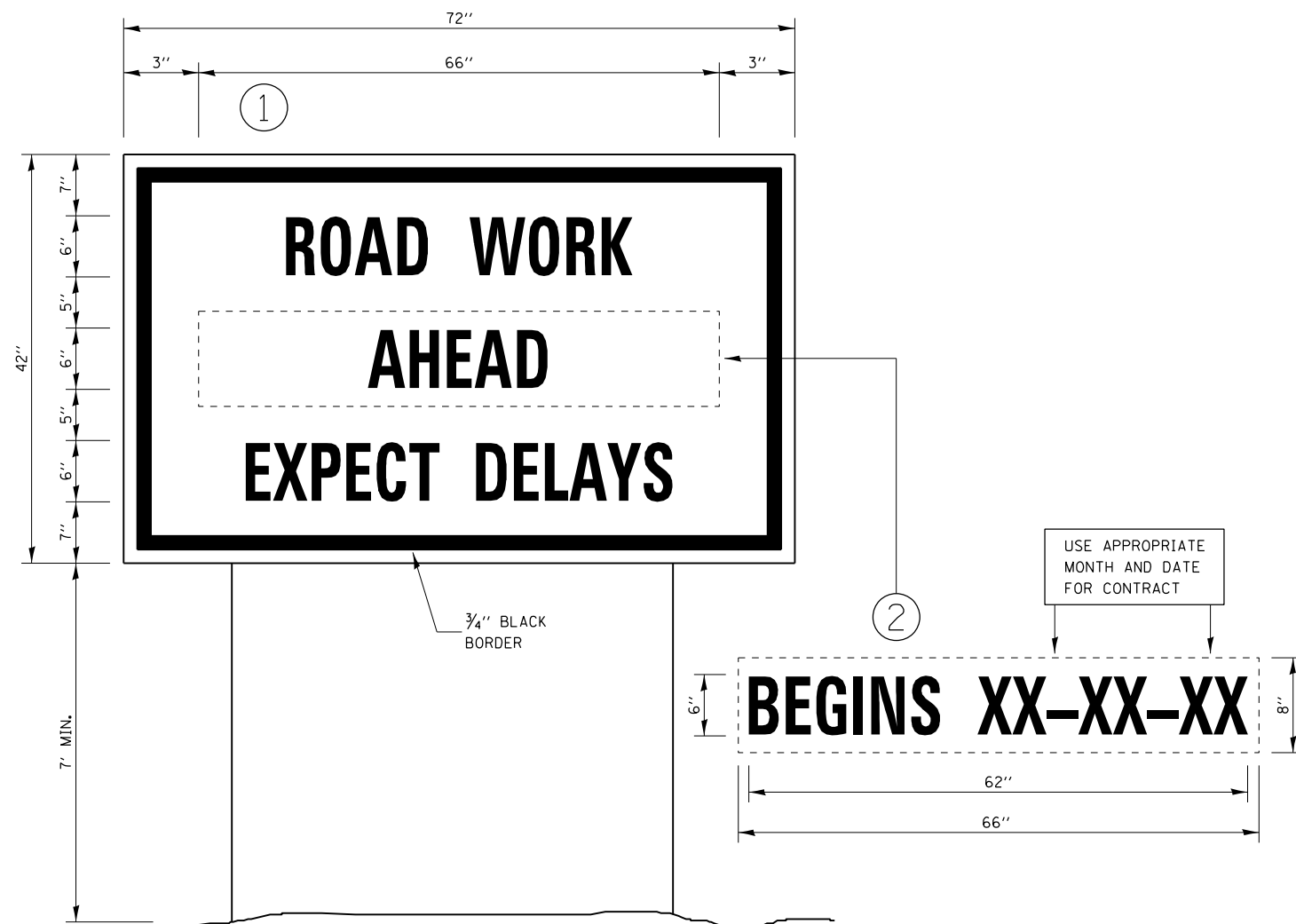
USER NAME = Marc.Budzynski	DESIGNED -	REVISED -
PLOT SCALE = 100.0000' / in.	DRAWN -	REVISED -
PLOT DATE = 12/13/2022	CHECKED -	REVISED -
	DATE -	REVISED -

**STATE OF ILLINOIS  
DEPARTMENT OF TRANSPORTATION**

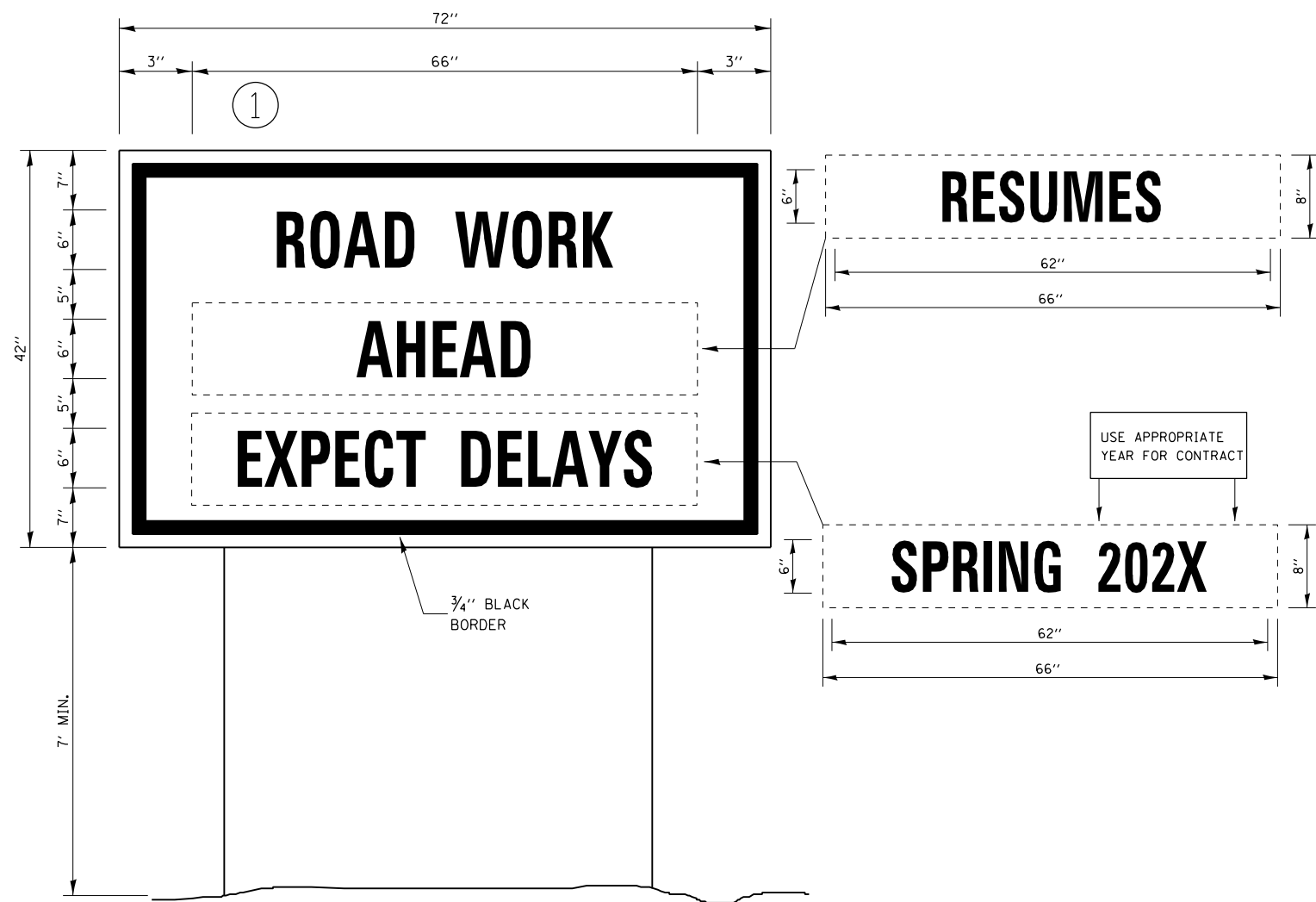
<b>SCHEDULES</b>			
SCALE:	SHEET	OF	SHEETS
	STA.	TO	STA.

F.A.P. RTE.	SECTION	COUNTY	TOTAL SHEETS	SHEET NO.
649	(28, 17, 16) SFY	LIVINGSTON	9	6
			CONTRACT NO. 66M37	
		ILLINOIS	FED. AID PROJECT	





**TEMPORARY INFORMATION SIGNING**



**WINTER SHUT DOWN SIGNING**

**NOTES:**

1. USE 6" D BLACK LETTERING ON FLOURESENT ORANGE BACKGROUND.
2. ERECT SIGNS AT LOCATIONS IN ADVANCE OF THE "ROAD CONSTRUCTION AHEAD" SIGNS AS DIRECTED BY THE ENGINEER.
3. ERECT SIGN ① WITH INSTALLED PANEL ② A MINIMUM OF ONE WEEK PRIOR TO THE START OF THE LANE CLOSURE.
4. REMOVE PANEL ② ON THAT DATE.
5. SEE SPECIAL PROVISION "TEMPORARY INFORMATION SIGNING" FOR ADDITIONAL INFORMATION.
6. WILL BE PAID FOR PER SQ FT AS "TEMPORARY INFORMATION SIGNING". EACH SIGN = 21 SQ FT AND THE DATE PANEL ② WILL NOT BE MEASURED SEPARATELY FOR PAYMENT.

MODEL: Default  
 FILE: M:\MS\_E\_Producer-sw-bentley.com\PROJECTS\DOT Offices\Burlington\Projects\0366M37\CADD\0366M37-2ht-cover.dgn

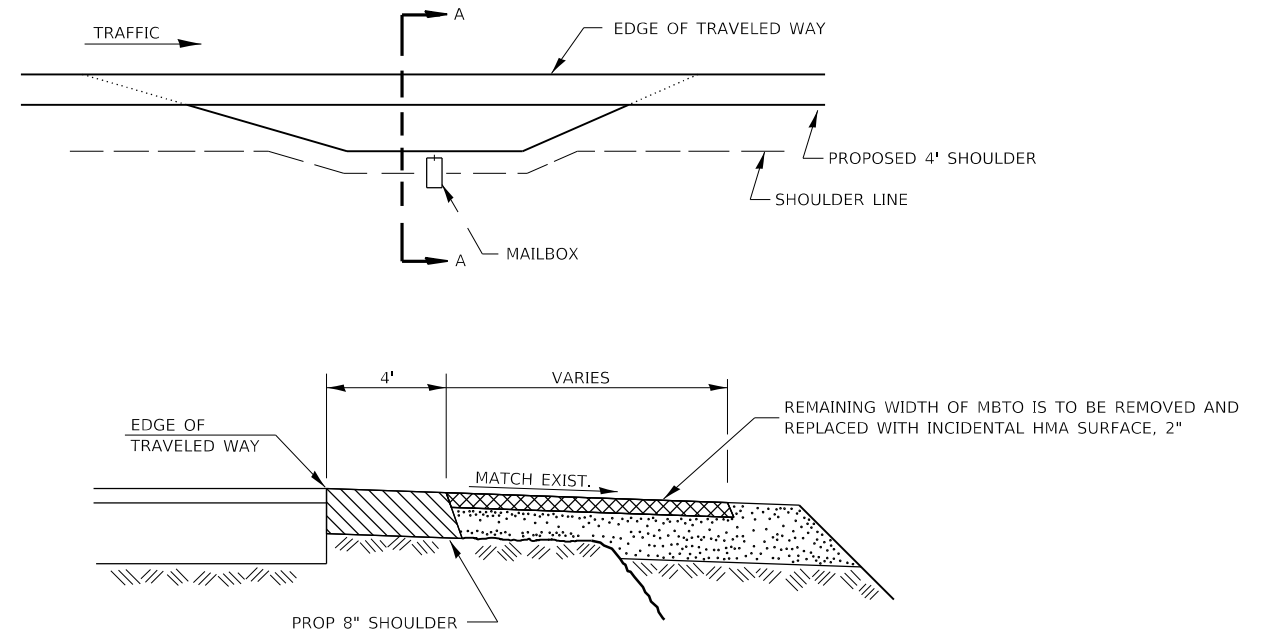
USER NAME = Marc.Budzynski	DESIGNED -	REVISED -
PLOT SCALE = 100.0000 ' / in.	DRAWN -	REVISED -
PLOT DATE = 12/13/2022	CHECKED -	REVISED -
	DATE -	REVISED -

**STATE OF ILLINOIS  
DEPARTMENT OF TRANSPORTATION**

<b>DETAILS</b>			
SCALE:	SHEET	OF	SHEETS
	STA.		TO STA.

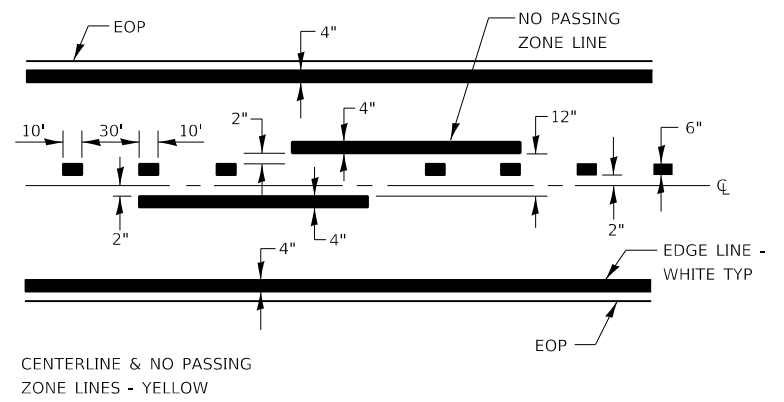
F.A.P. RTE.	SECTION	COUNTY	TOTAL SHEETS	SHEET NO.
649	(28, 17, 16) SFY	LIVINGSTON	9	8
CONTRACT NO. 66M37				
ILLINOIS FED. AID PROJECT				





**SECTION A-A**

**RURAL MAILBOX TURNOUT DETAILS**



**PAVEMENT MARKING**

MODEL: Default  
 FILE: Mailbox\_Pavement.dwg  
 PROJECT: \\server\projects\66637\66637\66637.dwg  
 USER: Marc.Budzynski

USER NAME = Marc.Budzynski	DESIGNED -	REVISED -
PLOT SCALE = 100.0000' / in.	CHECKED -	REVISED -
PLOT DATE = 12/13/2022	DATE -	REVISED -

**STATE OF ILLINOIS  
DEPARTMENT OF TRANSPORTATION**

<b>DETAILS</b>	
SCALE:	SHEET OF SHEETS STA. TO STA.

F.A.P. RTE.	SECTION	COUNTY	TOTAL SHEETS	SHEET NO.
649	(28, 17, 16) SFY	LIVINGSTON	9	9
CONTRACT NO. 66M37				
ILLINOIS FED. AID PROJECT				