

STATE OF ILLINOIS
DEPARTMENT OF TRANSPORTATION

RTE.	SECTION	COUNTY	SHEET NO.	TOTAL SHEETS
730	57-4(1)CR	MCLEAN	38*	J
		ILLINOIS	CONTRACT NO. 70907	

* 38 + 1 = 39 TOTAL SHEETS

INDEX OF SHEETS	
SHEET NO.	DESCRIPTION
1	COVER SHEET
2	GENERAL NOTES & COMMITMENTS
3-6	SUMMARY OF QUANTITIES
7-8	SCHEDULE OF QUANTITIES
9	TYPICAL SECTIONS
10	PLAN AND PROFILE
11	CLASS B PATCH DETAILS
12-13	DRAINAGE DETAILS
14-16	STAGING PLAN
17-19	WIDTH RESTRICTION SIGNING LOCATION PLAN
20	ROADWAY STAGING TYPICAL SECTIONS
21-30 A	STRUCTURE PLANS
31-33	CROSS SECTIONS
34-37	D-5 PAVEMENT MARKING AND MARKERS DETAIL
38	D-5 WIDTH RESTRICTION SIGNING DETAIL

FOR ILLINOIS DOT HIGHWAY STANDARDS SEE SHEET NO. 2

PROPOSED HIGHWAY PLANS

F.A.P. ROUTE 730 (U.S. 51 BUS)
SECTION 57-4(1)CR
PROJECT NHPP - EF64(538)
CULVERT REPLACEMENT
MCLEAN COUNTY

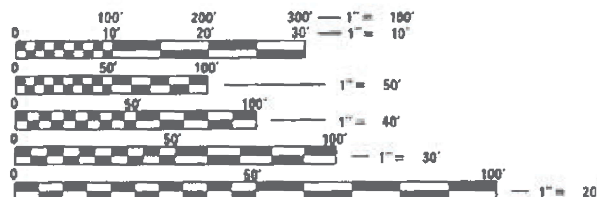
C-95-056-20

DITCH 0.1 MILE N OF RAAB ROAD IN NORMAL

R. 1 E. 3RD PM R. 2 E.

CURRENT TRAFFIC DATA FOR F.A.P. 730
2022 ADT = 13,700
P.U. = 91.0%
S.U. = 5.7%
M.U. = 3.3%

DESIGN DESIGNATION: N/A

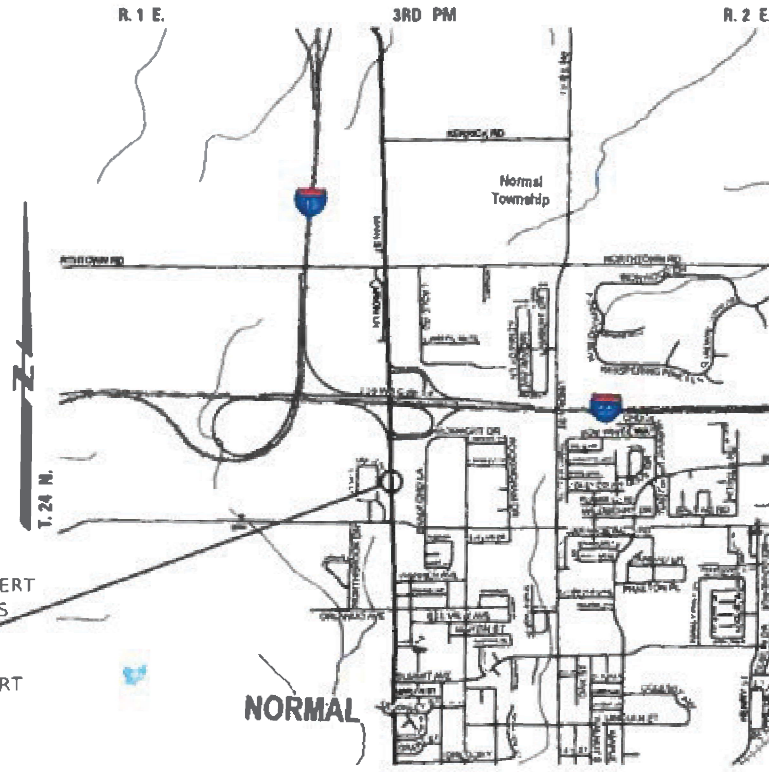


FULL SIZE PLANS HAVE BEEN PREPARED USING STANDARD ENGINEERING SCALES. REDUCED SIZED PLANS WILL NOT CONFORM TO STANDARD SCALES. IN MAKING MEASUREMENTS ON REDUCED PLANS, THE ABOVE SCALES MAY BE USED.

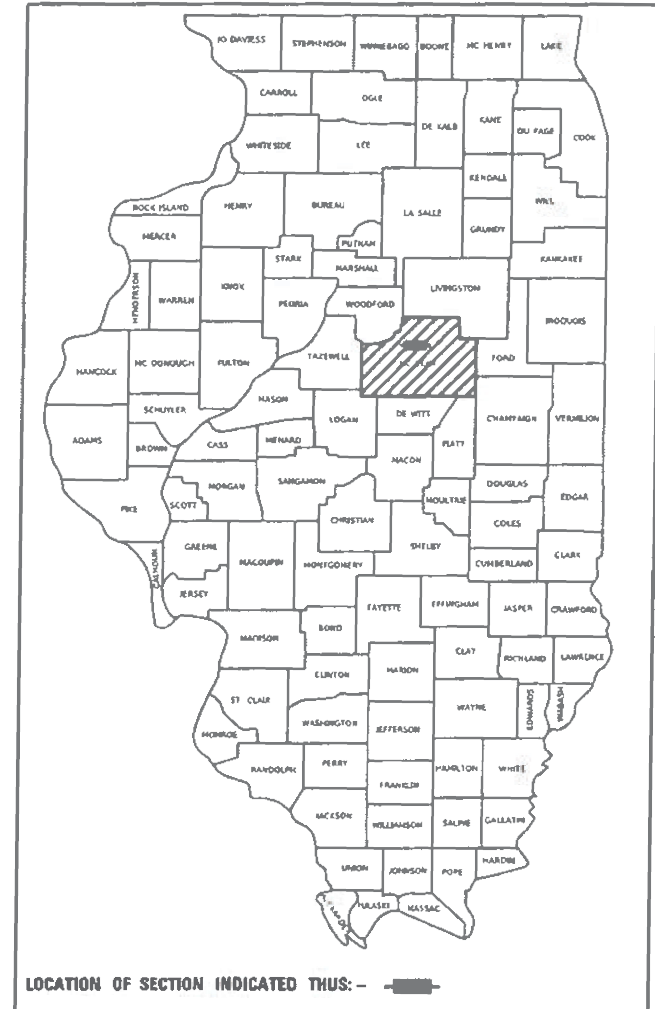
J.U.L.I.E.
JOINT UTILITY LOCATION INFORMATION FOR EXCAVATORS
1-800-892-0123
OR 811

PROJECT ENGINEER: RYAN CARROLL
PROJECT MANAGER: SAM MEGLI
PHONE: 217-466-7223

CONTRACT NO. 70907



GROSS LENGTH = 32.00 FT. = 0.006 MILE
NET LENGTH = 32.00 FT. = 0.006 MILE



LOCATION OF SECTION INDICATED THIS: -

STATE OF ILLINOIS
DEPARTMENT OF TRANSPORTATION

SUBMITTED 12/13 20 22
Kensil A. Manattswan
REGIONAL ENGINEER

February 3, 2023
S. E. A. Etk
ENGINEER OF DESIGN AND ENVIRONMENT

February 3, 2023
Stephen M. Smith
DIRECTOR OF HIGHWAYS PROJECT IMPLEMENTATION

PRINTED BY THE AUTHORITY
OF THE STATE OF ILLINOIS

VK Veenstra & Kimm, Inc.
Springfield, IL. Phone: (217)544-9033
IL Design Firm No. 184-001939

CHRISTOPHER P. KOHLER
SEAL
STATE OF ILLINOIS
EXPIRATION: 11/30/2023

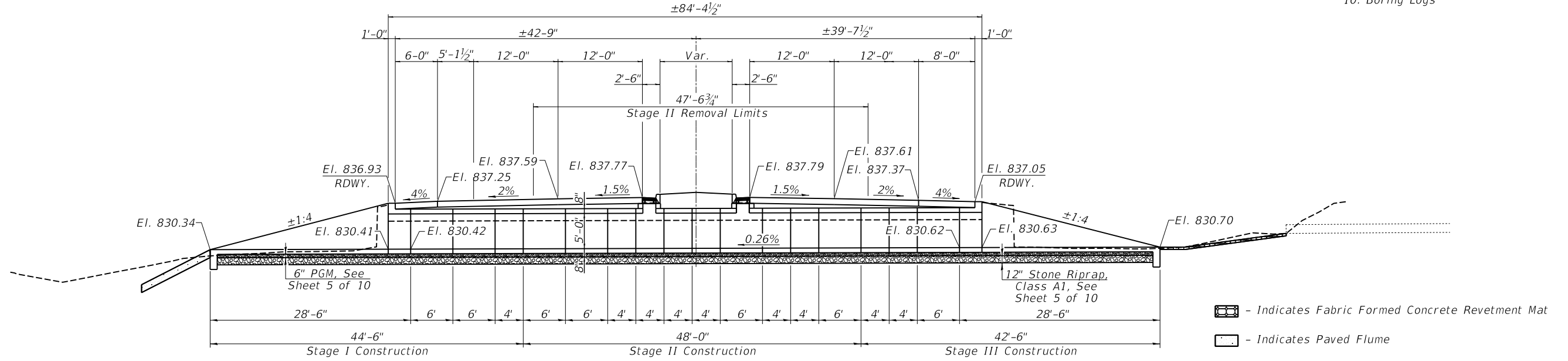
BM 5054-2: Chiseled square on top of 15" PCC pipe culvert located directly east of SN 057-8194. El. 834.202

Existing Structure: SN 057-8194 originally built under Section 57-4(1) in 1964. The structure is a single barrel reinforced concrete box culvert (6'-0"W x 3'-0"H) originally 97'-10" out-out of headwalls. 0° skew. In 1990 a special reinforced concrete spillway was added as was a fabric formed concrete revetment mat and two new Type B inlets were installed. In 2011 a 7" R.C. Slab Over was constructed for posting mitigation. The structure will be replaced using stage construction. \bar{c} structure Sta. 32+57.

No salvage.

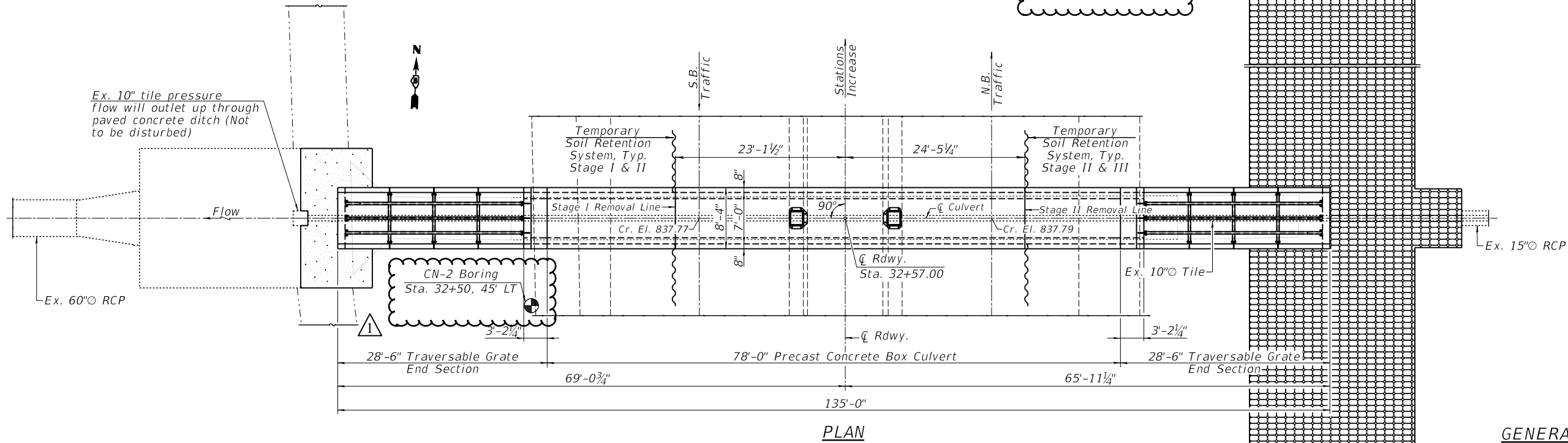
INDEX OF SHEETS

1. General Plan & Elevation
2. General Data
- 3-4. Stage Construction
5. Porous Granular Embankment
6. Drainage Details
- 7-8. Tapered End Sections
9. Traversable Pipe Grate for Box Culverts
10. Boring Logs

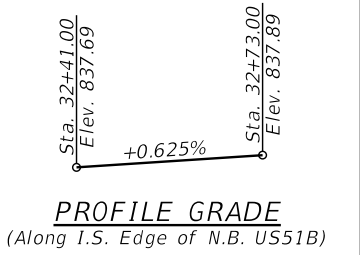


LONGITUDINAL SECTION
(Dimensions at \bar{c} Box Culvert)

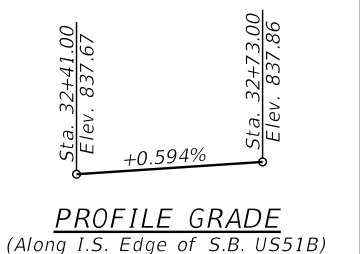
CN-1 Boring
Sta. 32+55, 42' RT



PLAN



PROFILE GRADE
(Along I.S. Edge of N.B. US51B)



PROFILE GRADE
(Along I.S. Edge of S.B. US51B)

GENERAL PLAN & ELEVATION
US ROUTE 51B OVER DRAINAGE DITCH
SECTION 57-4(1)CR
MCLEAN COUNTY
STATION 32+57
STRUCTURE NO. 057-8236

VEENSTRA & KIMM INC.
Springfield, IL. Phone: (217)544-8033
IL. Design Firm No. 184-001939

USER NAME =	DESIGNED - TRC	REVISED -
PLOT SCALE =	CHECKED - KES	REVISED -
PLOT DATE =	DRAWN - JRP	REVISED -
	CHECKED -	REVISED -

STATE OF ILLINOIS
DEPARTMENT OF TRANSPORTATION

GENERAL PLAN & ELEVATION
STRUCTURE NO. 057-8236

SHEET NO. 1 OF 10 SHEETS

F.A.P. RTE.	SECTION	COUNTY	TOTAL SHEETS	SHEET NO.
730	57-4(1)CR	MCLEAN	38	21
CONTRACT NO. 70907				

ILLINOIS FED. AID PROJECT



CN-1 SOIL BORING LOG Sheet 1 of 2

COUNTY McLean SECTION ROUTE North Main Street JOB NO. DATE 2/1/2023

DESCRIPTION Culvert Boring DISTRICT 5 LOCATION Normal, Illinois CONSULTANT Millennia DRILLED BY MET LOGGED BY L. Williams RIG TYPE CME 55 DRILLING METHOD Hollow Stem Auger HAMMER TYPE Automatic EFFICIENCY

Table with columns for BORING NO., Note, Offset, Northing, Easting, Ground Surface Elev., and depth measurements (ft) for E, D, B, U, M. Includes lithology descriptions like 'Brown and grey, SILTY CLAY, medium-stiff, moist'.

The Unconfined Compressive Strength (UCS) Qu column represents either the IDOT Rimac or AASHTO T 208 Test Procedure. The Qu failure mode is indicated by B for Bulge or S for Shear. P is a Pocket Penetrometer test. The Standard Penetration Test (SPT) N value is the sum of the second and third Blows /6 in. values in each sample using AASHTO T 206.

Printed 2/8/2023



CN-1 SOIL BORING LOG Sheet 2 of 2

COUNTY McLean SECTION ROUTE North Main Street JOB NO. DATE 2/1/2023

DESCRIPTION Culvert Boring DISTRICT 5 LOCATION Normal, Illinois CONSULTANT Millennia DRILLED BY MET LOGGED BY L. Williams RIG TYPE CME 55 DRILLING METHOD Hollow Stem Auger HAMMER TYPE Automatic EFFICIENCY

Table with columns for BORING NO., Note, Offset, Northing, Easting, Ground Surface Elev., and depth measurements (ft) for E, D, B, U, M. Includes lithology descriptions like 'Brown and grey, SILTY CLAY, medium-stiff, moist'.

The Unconfined Compressive Strength (UCS) Qu column represents either the IDOT Rimac or AASHTO T 208 Test Procedure. The Qu failure mode is indicated by B for Bulge or S for Shear. P is a Pocket Penetrometer test. The Standard Penetration Test (SPT) N value is the sum of the second and third Blows /6 in. values in each sample using AASHTO T 206.

Printed 2/8/2023

MODEL: \\MODEL\MJMS FILES: \\MAILS_P\millennia\pawbentley.com\PROJECTS\DOT_Offices\Dieter_S\Projects\DOT_Records\CAD\Drawings\70907-8H-BoreLog.dgn

Table with columns for USER NAME, DESIGNED, REVISIONS, DRAWN, CHECKED, PLOT SCALE, PLOT DATE, DATE, and REVISIONS.

STATE OF ILLINOIS DEPARTMENT OF TRANSPORTATION

BORING LOGS STRUCTURE NO. 057-8236

SCALE: SHEET 10 OF 10 SHEETS STA. TO STA.

Table with columns for F.A.P. RTE., SECTION, COUNTY, TOTAL SHEETS, SHEET NO., CONTRACT NO., and ILLINOIS FED. AID PROJECT.

REVISED ENTIRE SHEET 2/23/23

