

INDEX OF SHEETS

- 1 COVER SHEET
- 2 COMMITMENTS/JOB SPECIFIC NOTES
- 3 SUMMARY OF QUANTITIES
- 4-5 SCHEDULE OF QUANTITIES
- 6-7 LINE DIAGRAMS
- 8-10 DISTRICT STANDARDS

HIGHWAY STANDARDS

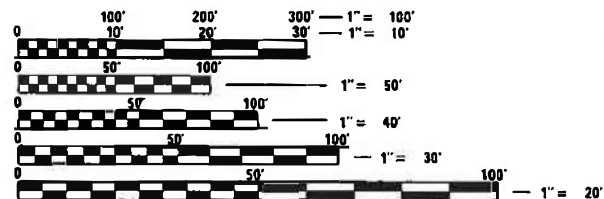
- 701400-11
- 701406-13
- 701411-09
- 701426-09
- 701901-08
- 701428-01

DISTRICT STANDARDS

- 452001
- 780001

DESIGN DESIGNATION: INTERSTATE

	I-74		ROADWAY A	ROADWAY B				
	TAZEWELL CO.	PEORIA CO.						
ADT	42200	35800	3222	6100				
HCV	11.61%	4899	6.98%	2499	16.50%	532	33.61%	2050
SU	3.79%	1599	1.68%	601	2%	64	4%	250
MU	7.82%	3300	5.31%	1901	15%	483	30%	1800



FULL SIZE PLANS HAVE BEEN PREPARED USING STANDARD ENGINEERING SCALES. REDUCED SIZED PLANS WILL NOT CONFORM TO STANDARD SCALES. IN MAKING MEASUREMENTS ON REDUCED PLANS, THE ABOVE SCALES MAY BE USED.

J.U.L.I.E.  
JOINT UTILITY LOCATION INFORMATION FOR EXCAVATORS  
1-800-892-0123  
OR 811

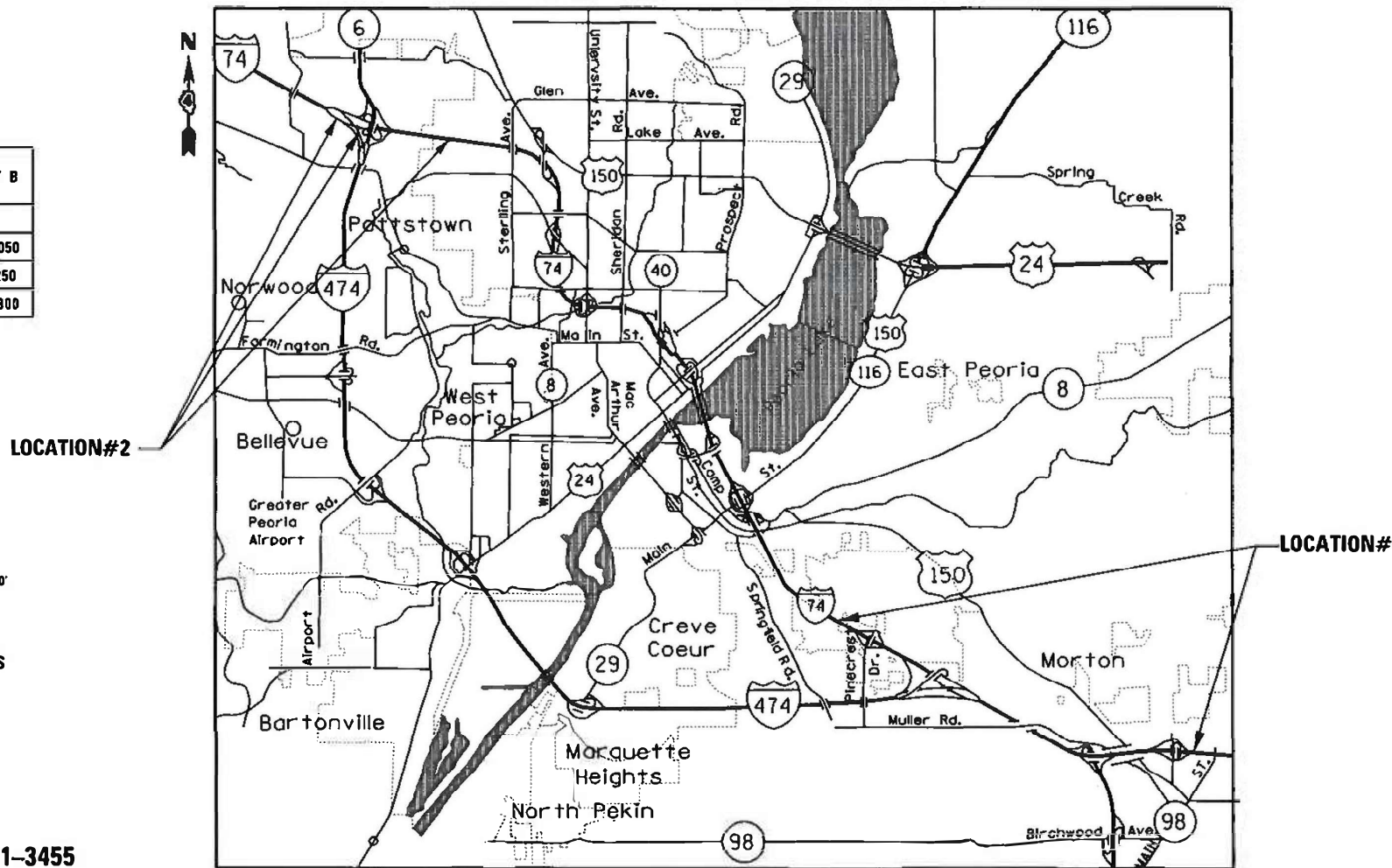
PROJECT ENGINEER: RICH DOTSON (309) 671-3455  
PROJECT MANAGER: MICHAEL JACOBS (309) 671-3474

CATALOG NO. 036337-00D  
CONTRACT NO. 68H21

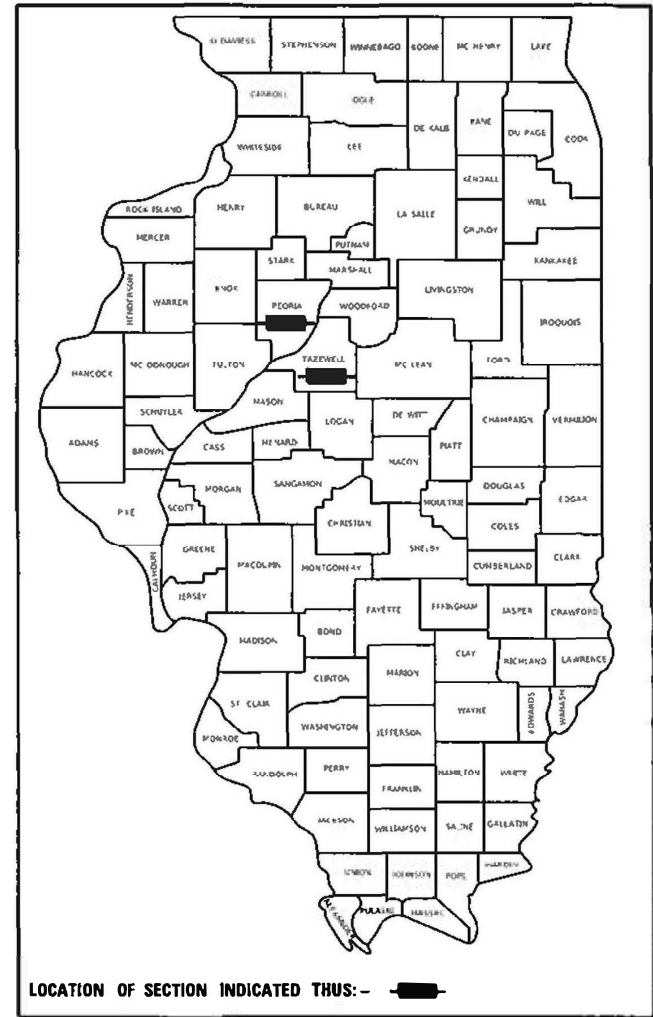
# PROPOSED HIGHWAY PLANS

FAI ROUTE 74/474 (I-74 & I-474)  
SECTION (90-14;72-6)CJS  
PROJECT NHPP-X7XX(349)  
TYPE OF IMPROVEMENT: PAVEMENT PRESERVATION  
TAZEWELL AND PEORIA COUNTIES

C-94-060-22



D-94-042-22



**PROJECT DESCRIPTION:**  
CRACK & JOINT SEALING AT VARIOUS LOCATIONS ALONG I-74 AND I-474 IN TAZEWELL AND PEORIA COUNTIES

STATE OF ILLINOIS  
DEPARTMENT OF TRANSPORTATION

SUBMITTED November 30, 2023  
Richard A. Jacobs REGIONAL ENGINEER

February 3, 2023  
Richard A. Jacobs ENGINEER OF DESIGN AND ENVIRONMENT

February 3, 2023  
Stephen M. Smith DIRECTOR OF HIGHWAYS PROJECT IMPLEMENTATION

**PRINTED BY THE AUTHORITY  
OF THE STATE OF ILLINOIS**

GROSS LENGTH = NA  
NET LENGTH = NA

**COMMITMENTS**

COMMITMENTS ARE NOT TO BE ALTERED WITHOUT THE WRITTEN CONSENT OF ALL PARTIES TO WHICH THE COMMITMENT WAS MADE

NO COMMITMENTS HAVE BEEN MADE FOR THIS PROJECT.

**JOB SPECIFIC NOTES**

CARE SHALL BE EXERCISED TO KEEP SEALANT OFF EXISTING PAVEMENT MARKINGS. SEE NOTE ⑥ IN DISTRICT CADD STANDARD 452001-D4 (INCLUDED IN PLANS) REGARDING HOW TO TREAT CRACKS NEAR OR IN PAVEMENT MARKINGS. NOTIFY THE BUREAU OF OPERATION PRIOR TO APPLYING THE PAVEMENT MARKING:  
 BILL HARRMANN 309-693-5173 (EAST) OR  
 DARRYL HOLMES 309-693-5176 (WEST)

ALL DIRT AND DEBRIS CREATED BY THE ROUTING OPERATION SHALL BE CLEANED FROM THE PAVEMENT AND PAVED SHOULDERS AT THE END OF THE DAY'S OPERATIONS ACCORDING TO ARTICLE 107.15 OF THE STANDARD SPECIFICATIONS.

LOCATIONS FOR PROPOSED "CRACK ROUTING AND FILLING" ARE NUMBERED BY PRIORITY. LOCATIONS SHALL BE COMPLETED IN THIS ORDER ONLY.

LOCATION 1 AND LOCATION 2:  
 NO LANE CLOSURES BEFORE 8:30 AM AND AFTER 3:30 PM

FILE NAME :	USER NAME : Brian.Bouris	DESIGNED :	REVISED :	<b>STATE OF ILLINOIS DEPARTMENT OF TRANSPORTATION</b>	<b>COMMITMENTS &amp; JOB SPECIFIC NOTES</b>	F.A.I. RTE.	SECTION	COUNTY	TOTAL SHEETS	SHEET NO.	
p:\1\1dat\pw.bentley.com\pw1001\Documents\1001\Offices\District 4\Projects\04_68H21\04_68H21.dwg	1001\Offices\District 4\Projects\04_68H21\04_68H21.dwg	DRAWN:	REVISED :			746474	190-14172-61CJS	TAZEWELL/PERNA	10	2	
Default	PLOT SCALE = 400.0000 1/8" = 1'	CHECKED :	REVISED :			CONTRACT NO. 68H21					
	PLOT DATE = 9/12/2022	DATE :	REVISED :			SCALE:	SHEET	OF	SHEETS	STA.	TO STA.

CODE NO.	ITEM	UNIT	TOTAL QUANTITY	CONSTRUCTION CODE	
				URBAN	URBAN
				TAZEWELL COUNTY 90% FEDERAL 10% STATE 0005	PEORIA COUNTY 90% FEDERAL 10% STATE 0005
67100100	MOBILIZATION	L SUM	1	0.8	0.2
70107025	CHANGEABLE MESSAGE SIGN	CAL DA	42	14	28
X4510100	CRACK ROUTING AND FILLING	POUND	74112	59461	14651
X7010216	TRAFFIC CONTROL AND PROTECTION (SPECIAL)	L SUM	1	0.8	0.2
* X7800815	HOT SPRAY THERMOPLASTIC PAVEMENT MARKING LINE - 4 INCH	FOOT	114314	88552	25762
* X7800835	HOT SPRAY THERMOPLASTIC PAVEMENT MARKING LINE - 6 INCH	FOOT	15822	12601	3221
* X7800845	HOT SPRAY THERMOPLAOSTIC PAVEMENT MARKING LINE - 8 INCH	FOOT	8449	8449	0

\*= SPECIALTY ITEM

FILE NAME =	USER NAME = Brian Bouris	DESIGNED =	REVISED =
p:\dot\p.bentley.com\PI\DOT\Documents\DOT Offices\District 4\Projects\04-68H21\DRAWING\0468H21\shc-Full1.sht.dgn		CHECKED =	REVISED =
		DATE =	REVISED =

STATE OF ILLINOIS  
DEPARTMENT OF TRANSPORTATION

SUMMARY OF QUANTITIES

F.A.I. RTE.	SECTION	COUNTY	TOTAL SHEETS	SHEET NO.
74&474	190-1472-6ICJ5	TAZEWELL/PEORIA	10	3
CONTRACT NO. 68H21				
ILLINOIS FED. AID PROJECT				

HOT SPRAY THERMOPLASTIC PAVEMENT MARKING*							
LOCATION				4"		6"	8"
				WHITE	YELLOW	WHITE	WHITE
STA.	TO	STA.	FT		FT	FT	
<b>TAZEWELL COUNTY</b>							
<b>I-74 E.B.</b>							
STA. 280+28	TO	STA. 346+20	6,592.00	6,592.00	1,648.00		
STA. 346+20	TO	STA. 349+75	355.00	355.00	88.75	118.33	
STA. 349+75	TO	STA. 352+95	320.00	320.00	80.00	640.00	
STA. 352+95	TO	STA. 374+92	2,197.00	2,197.00	549.25		
STA. 374+92	TO	STA. 378+60	368.00	368.00	92.00	736.00	
STA. 378+60	TO	STA. 386+39	779.00	779.00	389.50		
STA. 386+39	TO	STA. 388+95	256.00	256.00	128.00	85.33	
STA. 388+95	TO	STA. 393+03	408.00	408.00	204.00	816.00	
STA. 393+03	TO	STA. 396+40	337.00	337.00	168.50		
STA. 396+40	TO	STA. 441+49	4,509.00	4,509.00	1,127.25		
STA. 441+49	TO	STA. 449+05	2,268.00	756.00	378.00		
STA. 449+05	TO	STA. 465+04	1,599.00	1,599.00	799.50		
STA. EQ.: 465+04 BK = STA. 464+43 AH							
STA. 464+43	TO	STA. 473+12	869.00	869.00	434.50		
STA. 610+08	TO	STA. 612+92	284.00	284.00	71.00	568.00	
STA. 612+92	TO	STA. 619+00	608.00	608.00	152.00	202.67	
STA. 619+00	TO	STA. 632+97	1,397.00	1,397.00	349.25		
<b>I-74 W.B.</b>							
STA. 280+28	TO	STA. 340+75	6,047.00	6,047.00	1,511.75		
STA. 340+75	TO	STA. 350+00	925.00	925.00	231.25	308.33	
STA. 350+00	TO	STA. 351+85	185.00	185.00	46.25	370.00	
STA. 351+85	TO	STA. 374+90	2,305.00	2,305.00	576.25		
STA. 374+90	TO	STA. 378+75	385.00	385.00	96.25	770.00	
STA. 378+75	TO	STA. 381+65	290.00	290.00	72.50	96.67	
STA. 381+65	TO	STA. 412+44	3,079.00	3,079.00	769.75		
STA. 412+44	TO	STA. 418+90	646.00	646.00	161.50	1,292.00	
STA. 418+90	TO	STA. 446+75	2,785.00	2,785.00	696.25		
STA. 446+75	TO	STA. 454+65	790.00	790.00	395.00	1,580.00	
STA. 454+65	TO	STA. 464+30	965.00	965.00	482.50		
STA. 597+00	TO	STA. 610+08	1,308.00	1,308.00	327.00		
STA. 610+08	TO	STA. 612+60	0.00	252.00	63.00	504.00	
STA. 612+60	TO	STA. 614+00	140.00	140.00	35.00	280.00	
STA. 614+00	TO	STA. 616+45	245.00	245.00	61.25	81.67	
STA. 616+45	TO	STA. 633+10	1,665.00	1,665.00	416.25		
<b>PEORIA COUNTY</b>							
<b>I-74 E.B.</b>							
STA. 348+42	TO	STA. 380+83	3241.0	3241.0	810.25		
<b>I-74 W.B.</b>							
STA. 348+42	TO	STA. 380+77	3235.0	3235.0	808.75		
<b>ROADWAY A</b>							
STA. 122+80	TO	STA. 157+07	3427.0	3427.0	856.75		
TWO ARROWS STA. 123+40							
<b>ROADWAY B</b>							
STA. 50+50	TO	STA. 80+28	2978.0	2978.0	744.50		
SUB-TOTAL FOR TAZEWELL COUNTY			88552.0	12601.0	8449.0		
SUB-TOTAL FOR PEORIA COUNTY			25762.0	3221.0	0.0		
<b>TOTAL</b>			<b>114,314</b>	<b>15,822</b>	<b>8,449</b>		

\*Proposed pavement markings shall be in the same location as exiting markings.

FILE NAME	USER NAME = Brian Bouris	DESIGNED	REVISED	<b>STATE OF ILLINOIS DEPARTMENT OF TRANSPORTATION</b>	<b>SCHEDULE OF QUANTITIES</b>				F.A.I. RTE.	SECTION	COUNTY	TOTAL SHEETS	SHEET NO.
100T Offices\District 9\Projects\04_68H21	100T Offices\District 9\Projects\04_68H21	DRAWN	REVISED						748474	190-14172-60CJS	TAZEWELL/PEORIA	10	4
PLOT SCALE = 400.0697	CHECKED	REVISED	REVISED		SCALE: SHEET OF SHEETS STA. TO STA.				CONTRACT NO. 68H21				
PLOT DATE = 9/12/2022	DATE	REVISED	REVISED		ILLINOIS FED. AID PROJECT								

CRACK ROUTING AND FILLING			
LOCATION			POUND
<b>TAZEWELL COUNTY</b>	<b>ROUTE</b>		
(LOCATION 1)	I-74	I-74 FROM E. OF WASHINGTON ST. TO MULLER RD.	59461
	I-74	I-74 FROM E. OF MORTON AVE INT TO N. MAIN ST. IN MORTON	
<b>PEORIA COUNTY</b>			
(LOCATION 2)	I-474	RDWY "A": FROM WB I-474 TO WB I-74	14651
	I-474	RDWY "B": FROM EB I-74 TO EB I-474	
	I-74	I-74 FROM UP RR STRUCTURE TO W. OF STERLING AVE	
<b>TOTAL</b>			<b>74112</b>

CHANGEABLE MESSAGE SIGN	
LOCATION	CAL DA
TAZEWELL	2 SIGNS - 7 DAYS EACH
PEORIA	4 SIGNS - 7 DAYS EACH
<b>TOTAL</b>	<b>42</b>

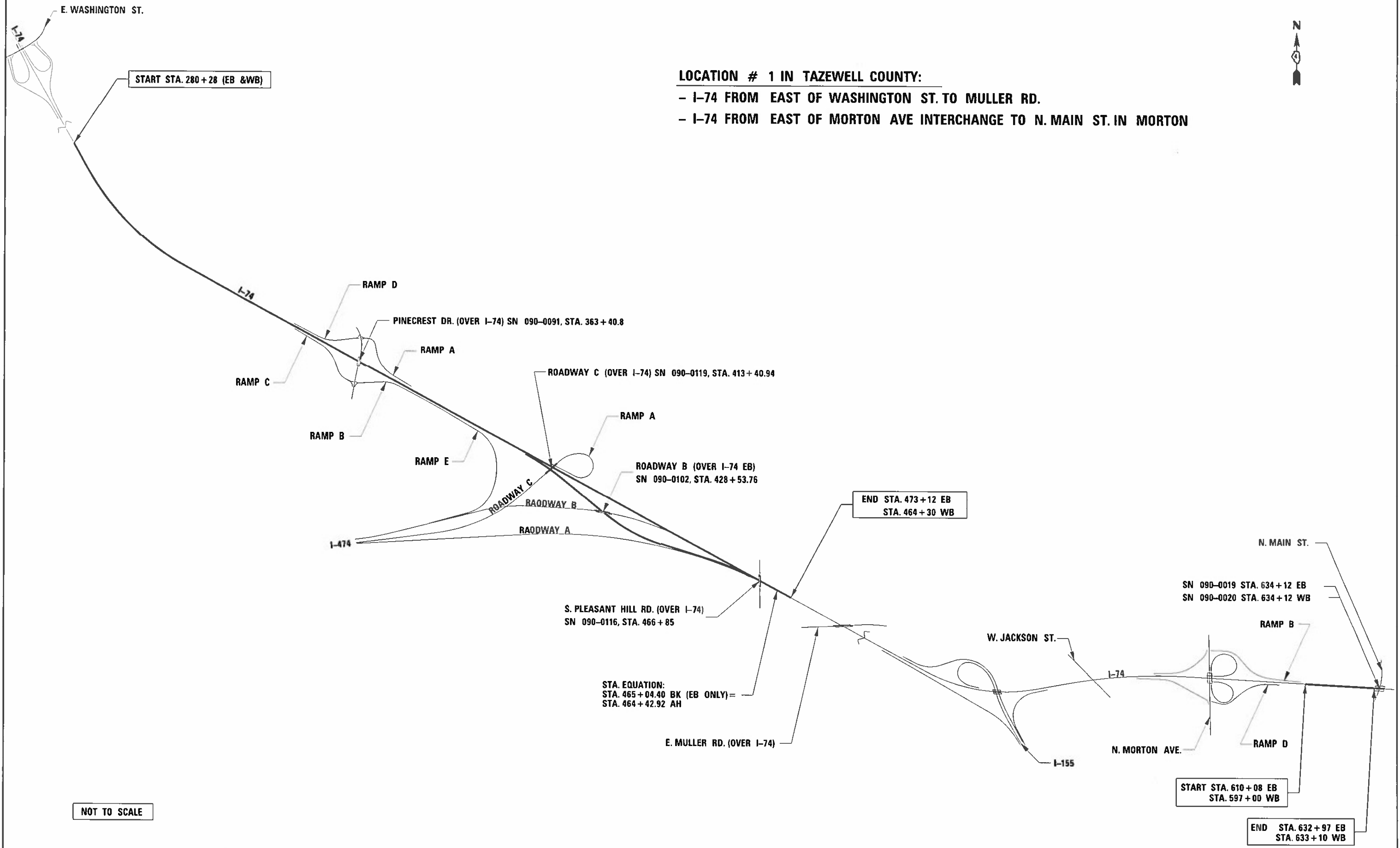
TRAFFIC CONTROL AND PROTECTION (SPECIAL)	
LOCATION	L SUM
TAZEWELL	0.8
PEORIA	0.2
<b>TOTAL</b>	<b>1</b>

MOBILIZATION	
LOCATION	L SUM
TAZEWELL	0.8
PEORIA	0.2
<b>TOTAL</b>	<b>1</b>



**LOCATION # 1 IN TAZEWELL COUNTY:**

- I-74 FROM EAST OF WASHINGTON ST. TO MULLER RD.
- I-74 FROM EAST OF MORTON AVE INTERCHANGE TO N. MAIN ST. IN MORTON

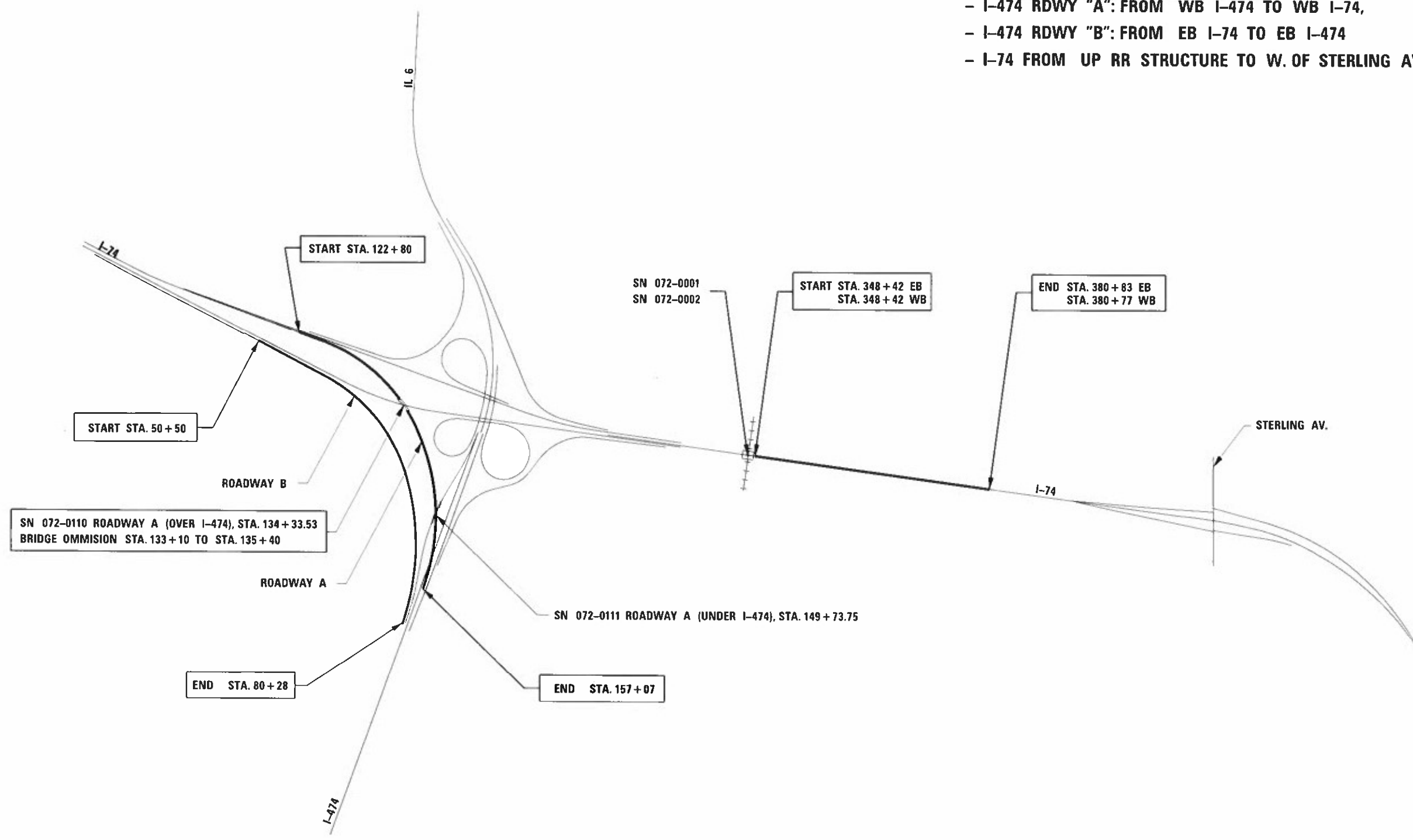


NOT TO SCALE

FILE NAME =	USER NAME = Brian Bouris	DESIGNED =	REVISED =	<b>STATE OF ILLINOIS DEPARTMENT OF TRANSPORTATION</b>	<b>LINE DIAGRAM -- LOCATION 1</b>			F.A.T. RTE.	SECTION	COUNTY	TOTAL SHEETS	SHEET NO.			
Default	\\dot\pwbentley.com\p1001\Documents\11001\Offices\District 4\Projects\04_68H21\Drawn\Drawings\0468H21\int\full\set.dgn	CHECKED =	REVISED =		SCALE:	SHEET	OF	SHEETS	STA.	TO STA.	748474	190-14172-6HCJS	TAZEWELL/PEORIA	10	6
	PLOT SCALE = 400.0697 / in	DATE =	REVISED =										CONTRACT NO. 68H21		
	PLOT DATE = 9/12/2022												ILLINOIS FED. AID PROJECT		



**LOCATION # 2 IN PEORIA COUNTY:**  
 - I-474 RDWY "A": FROM WB I-474 TO WB I-74,  
 - I-474 RDWY "B": FROM EB I-74 TO EB I-474  
 - I-74 FROM UP RR STRUCTURE TO W. OF STERLING AVE



**NOT TO SCALE**

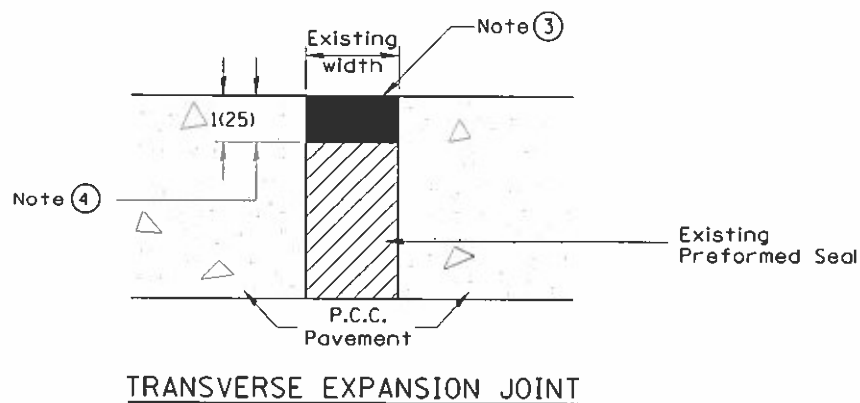
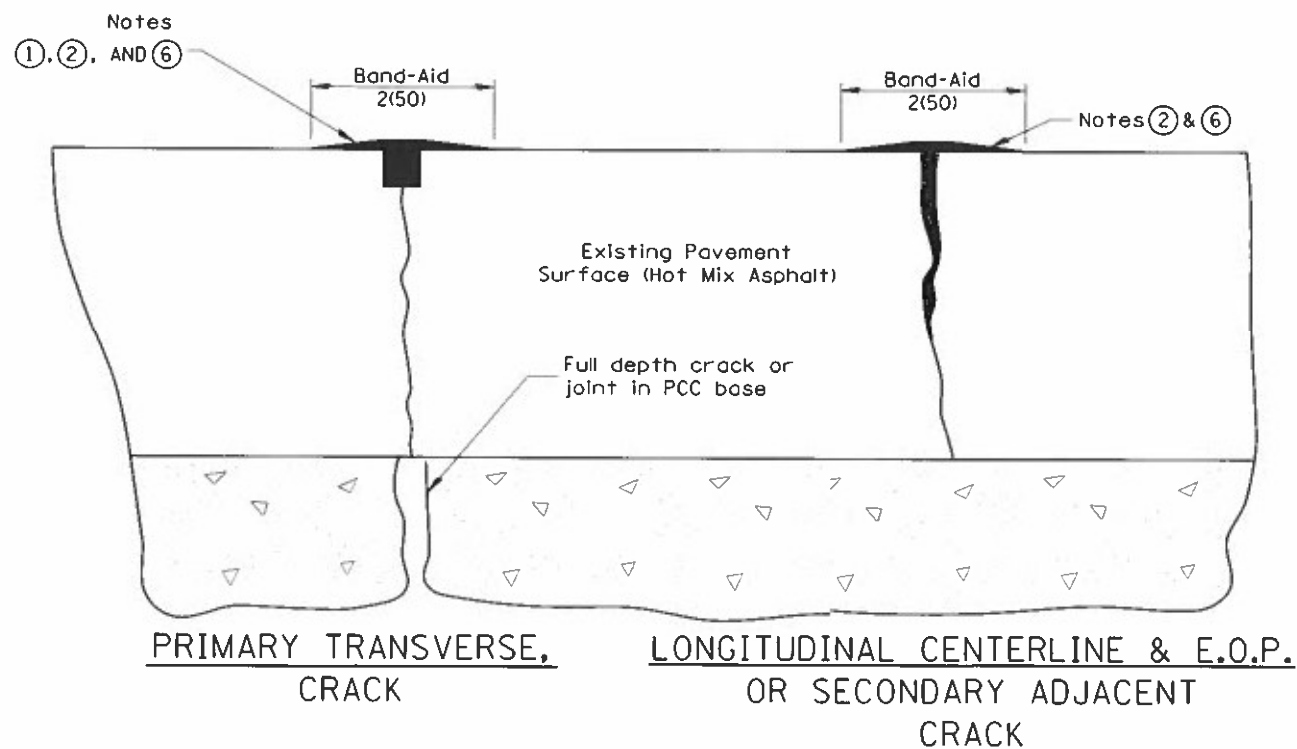
**STATE OF ILLINOIS  
 DEPARTMENT OF TRANSPORTATION**

**LINE DIAGRAM - LOCATION 2**

FILE NAME	USER NAME	DESIGNED	REVISED
PROJECT OFFICE	PROJECT NO.	CHECKED	REVISED
PLOT SCALE	PLOT DATE	DATE	REVISED

F.A.I. RTE.	SECTION	COUNTY	TOTAL SHEETS	SHEET NO.
748474	190-14-72-6HCJS	TAZEWELL/PEORIA	10	7
CONTRACT NO. 68H21				
ILLINOIS FED. AID PROJECT				

SCALE:	SHEET	OF	SHEETS	STA.	TO STA.
--------	-------	----	--------	------	---------



**NOTES**

- ① Route or saw to  $\frac{3}{4}(20)$  wide by  $\frac{3}{4}(20)$  deep; (1:1 ratio).
- ② Overfill with sealant; squeegee to provide 2 (50) wide flush "band-aid" effect; feather edges flush.
- ③ Seal flush without "band-aid" effect.
- ④ Route to 1(25) depth; clean and reface walls.
- ⑤ Crack and Joint Sealing shall conform to Section 451 and 452
- ⑥ The "Band Aid" width shall be reduced or eliminated in areas adjacent to existing pavement markings as directed by the Engineer.

All dimensions are in inches (millimeters) unless otherwise noted.

01-01-97	RENUM. C-36.01. NEW REVISE BOX	T.P.	01-05-21	REVISED	R.D.
05-01-97	REVISED	E.T.			
10-16-06	REVISED TO 2007 SPEC.	M.A.			
01-01-17	REVISED	R.D.			

**STATE OF ILLINOIS  
DEPARTMENT OF TRANSPORTATION**

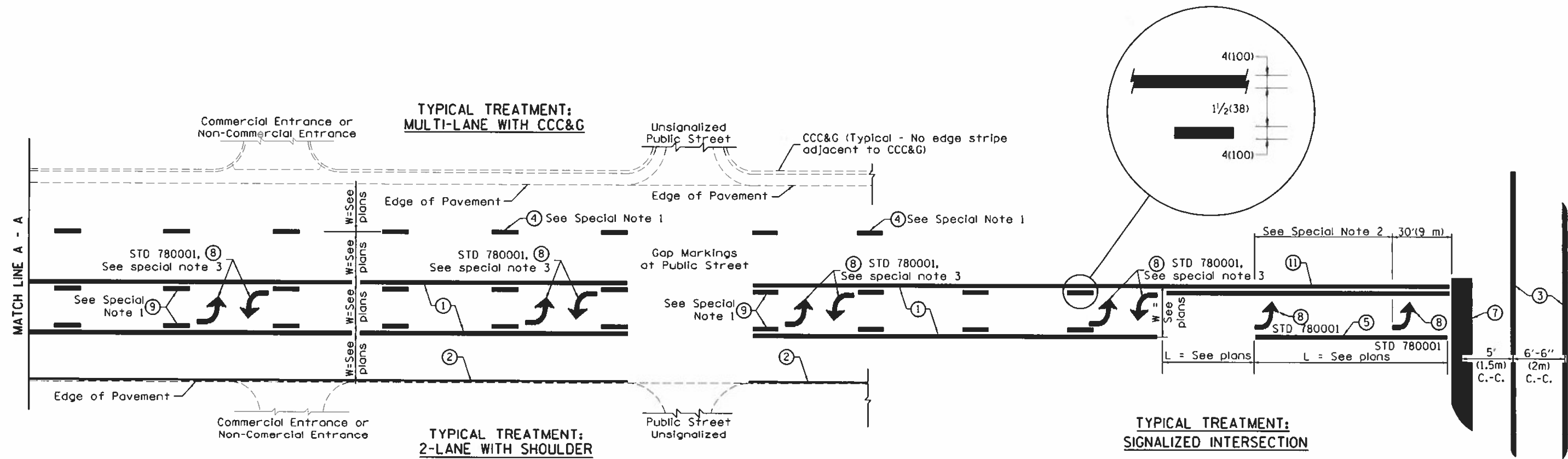
**CRACK AND JOINT SEALING**  
NOT TO SCALE

F.A.I. RTE.	SECTION	COUNTY	TOTAL SHEETS	SHEET NO.
748474	190-14172-6KJS	TAZEWELL/PEORIA	10	B
CONTRACT NO. 68H21				

CADD STD. 452001-D4 FED. ROAD DIST. NO. ILLINOIS FED. AID PROJECT



DESIGNER NOTES:  
1. Include State Standard 780001 (Typical Pavement Markings)



**FLUSH PAVED MEDIAN: TWO-WAY LEFT TURN LANE WITH ONE-WAY LEFT TURN LANE AT SIGNALIZED INTERSECTION**

**TYPICAL PAVEMENT MARKING LEGEND**

(Note: This is a District Standard Legend. Some elements may not apply to specific project.)

- ① 4(100) Solid (Yellow)
- ② 4(100) Solid (White)
- ③ 2-6(150) Crosswalk @ 6'-6" (2m)min C.-C. (White)  
2-8(200) Crosswalk @ 6'-6" (2m)min C.-C. (White) (When traffic signals are present.)
- ④ 6(150) Skip-Dash (White) (See Special Note 1)
- ⑤ 8(200) Solid (White)
- ⑥ 12(300) Diagonal (White) (Item ⑥ is shown on Std. 780001)
- ⑦ 24(600) Stop Bar (White)
- ⑧ Letters & Arrows (See Std. 780001 and Special Notes 2 & 3)
- ⑨ 4(100) Skip-Dash (Yellow) (See Special Note 1)
- ⑩ 12(300) Diagonal (Yellow) (See Table A) 45°
- ⑪ 4(100) Double Solid (Yellow) 11(280) C.-C. See Table A

**SPECIAL NOTES**

1. Skip-Dash markings will be centered between both ends of city blocks and shall be placed in alignment transversely across the pavement.
2. The following shall apply to arrows located in one-way left turn lanes:
  - A. A minimum of two (2) arrows is required.
  - B. The maximum spacing between arrows is 80' (24 m).
  - C. Arrows shall be evenly spaced if three (3) or more are required.
3. The following shall apply to arrow pairs located in two-way left turn lanes:
  - A. A minimum of two (2) arrow pairs is required.
  - B. The maximum spacing between arrow pairs is 200' (61 m).
  - C. Arrow pairs shall be evenly spaced if three (3) or more are required.
  - D. The spacing between BI Directional Left Turn Arrows is 33' (10 m).

**GENERAL NOTES**

1. Refer to State Standard 780001 for additional Pavement Markings including letters & arrows.
2. See Plans for Pavement Markings adjacent to curbed islands and medians, and through lane reductions.
3. Refer to Article 780.13 for letter, number and symbol areas (sq. ft.)
4. Areas are grooved 1" beyond each edge for the following symbols:
  - Through Arrow= 14.8 sq. ft.
  - Large Left or Right Arrow= 21.9 sq. ft.
  - 2 Arrow Combination Left (or Right) and Through= 34.9 sq. ft.
  - Wrong Way Arrow= 29.5 sq. ft.
  - Railroad Crossing Symbol= 69.8 sq. ft.
 (For further information, refer to BDE Special Provision: Grooving for Recessed Pavement Markings)

01-01-97	RENUM. F-8.03, NEW REVISION BOX	T.P.	10-16-06	REVISED TO 2007 SPEC.	
02-07-97	ADD BI DIRECTIONAL DIMENSION	J.A.	2/29/16	ADDED GROOVING AREAS	R.D.
10-97	CORRECT BI DIRECTIONAL DIMENSION	J.A.	07-16-19	SPELLING CORRECTIONS	R.D.
08-02	ADD CROSSWALK DIMS. WITH T.S.	M.A.			

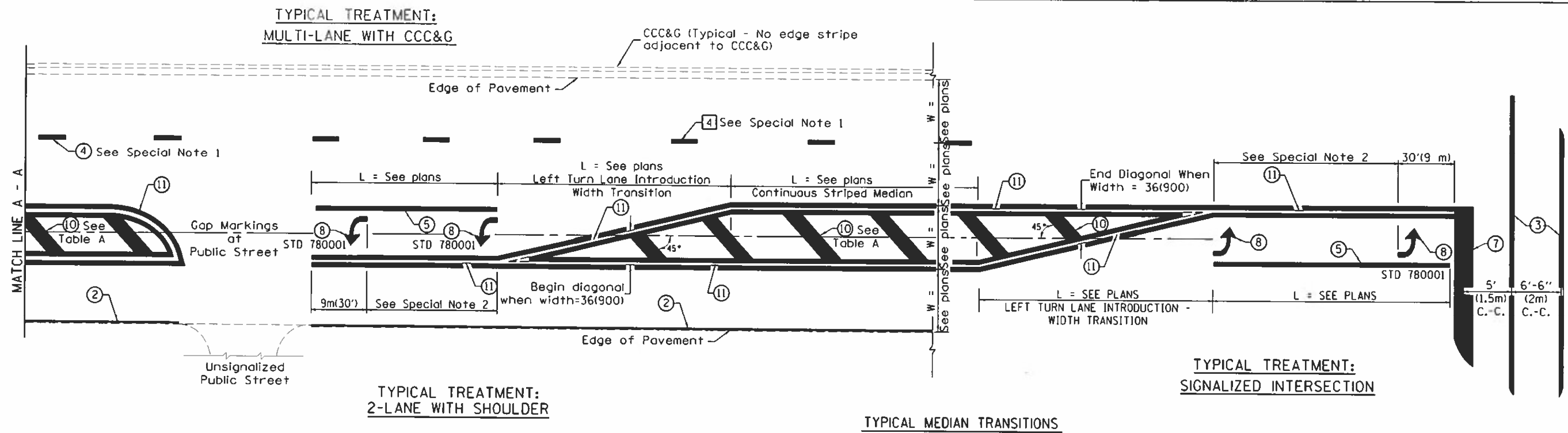
**STATE OF ILLINOIS  
DEPARTMENT OF TRANSPORTATION**

**TYPICAL PAVEMENT MARKINGS**

NOT TO SCALE

SHT. 1 OF 2  
CADD STD. 780001-04

F.A.J. RTE.	SECTION	COUNTY	TOTAL SHEETS	SHEET NO.
748474	190-14172-6ICJ5	TAZEWELL/PEORIA	10	9
FED. ROAD DIST. NO. ILLINOIS FED. AID PROJECT			CONTRACT NO. 68H21	



TYPICAL TREATMENT:  
MULTI-LANE WITH CCC&G

TYPICAL TREATMENT:  
2-LANE WITH SHOULDER

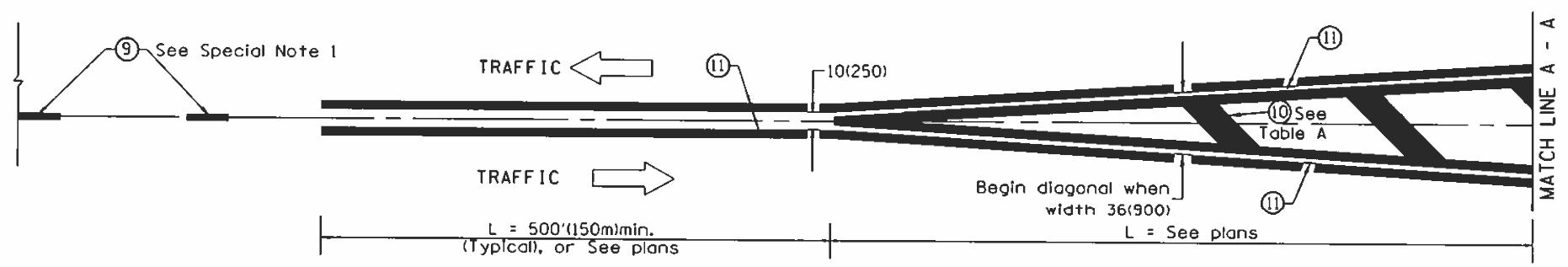
TYPICAL TREATMENT:  
SIGNALIZED INTERSECTION

TYPICAL MEDIAN TRANSITIONS

FLUSH PAVED MEDIAN: RESTRICTED LEFT TURN LANE

TABLE A  
RECOMMENDED SPACING BETWEEN DIAGONAL LINES

SPEED LIMIT RANGE	INTERSECTION CHANNELIZATION (Includes Width Transitions for Median and Left Turn Lane Introductions)	
	CONTINUOUS	
Less Than 30 mph (50 km/h)	50' (15m)	15' (5m)
30 - 45 mph (50 - 70 km/h)	75' (23m)	20' (6m)
Over 45 mph (70 km/h)	150' (46m)	30' (9m)



MEDIAN INTRODUCTION - WIDTH TRANSITIONS

All dimensions are in inches (millimeters) unless otherwise noted.