

STATE OF ILLINOIS
DEPARTMENT OF TRANSPORTATION
**PROPOSED
HIGHWAY PLANS**

| F.A.I. RTE. | SECTION | COUNTY | TOTAL SHEETS | SHEET NO. |
|-------------|--------------------------|------------|--------------------|-----------|
| 9153 | DIST 8 DEEP WELLS 2023-2 | ST. CLAIR | 6 | 1 |
| | | (ILLINOIS) | CONTRACT NO. 76R51 | |

D-98-094-22

INDEX OF SHEETS

- 1 COVER SHEET
- 2 SUMMARY OF QUANTITIES
- 3 PIPE SUPPORT PLANS
- 4 PIPE SUPPORT ELEVATION AND DETAILS
- 5 MIXER REPLACEMENT ELEVATION

HIGHWAY STANDARDS

- 000001-08 STANDARD SYMBOLS, ABBREVIATIONS AND PATTERNS
001006 DECIMAL OF AN INCH AND OF A FOOT

**FAU 9153 (EXCHANGE AVENUE)
SECTION DIST 8 DEEP WELLS 2023-2
BOWMAN PUMP STATION
MIXER REPLACEMENT
ST. CLAIR COUNTY**

C-98-126-22



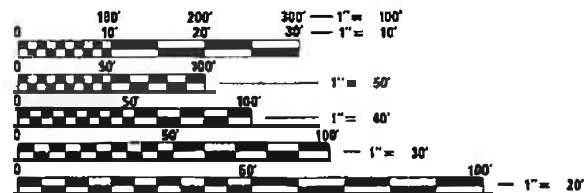
LOCATION OF SECTION INDICATED THUS: - [shaded area] -

PLANS PREPARED BY:

KLINGNER & ASSOCIATES, P.C.

Engineers • Architects • Surveyors

- 616 North 24th Street, Quincy, IL Ph (217)223-3870 - Fax (217)223-3803
 - 4519 Paris Gravel Road, Hannibal, MO Ph (573)221-0020 - Fax (573)221-0012
 - 440 N. 4th Street, Suite 100, Burlington, IA Ph (319)753-1038 - Fax (319)753-0805
 - 48 North Prairie Street, Carbondale, IL Ph (618)342-4342 - Fax (618)341-3781
 - 604 Liberty Street, Suite 125, Peoria, IA Ph (319)612-7422
 - 907 East Ash Street, Columbia, MO Ph (573)255-6888
 - 2150 West Mah Street, Carbondale, IL Ph (618)331-4050
- Internet Address: www.klingner.com
STATE OF ILLINOIS DESIGN FIRM # 1842738

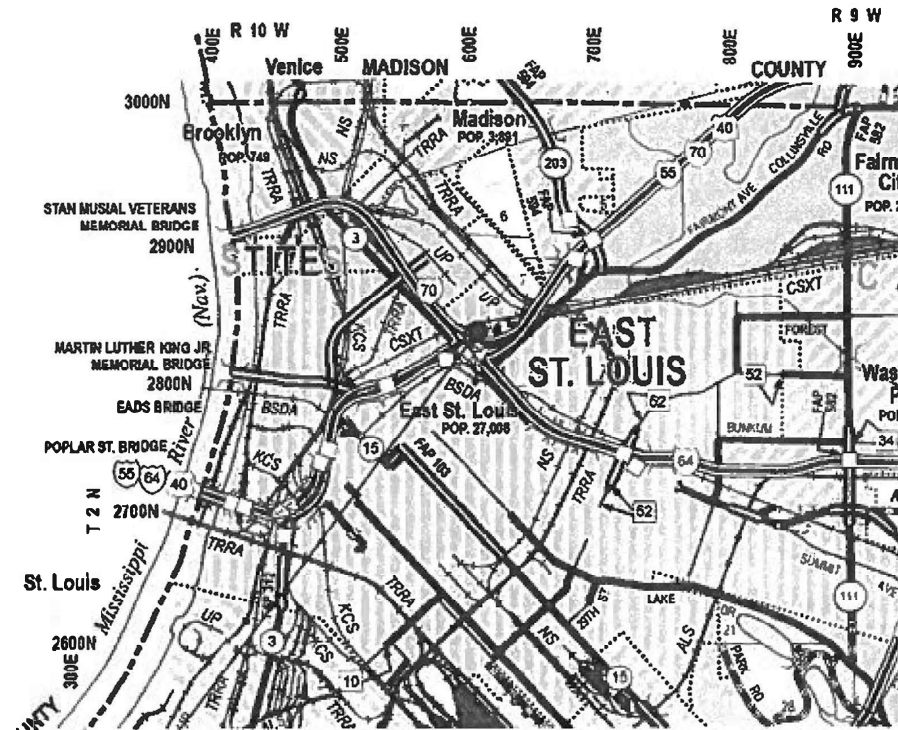


FULL SIZE PLANS HAVE BEEN PREPARED USING STANDARD ENGINEERING SCALES. REDUCED SIZED PLANS WILL NOT CONFORM TO STANDARD SCALES. IN MAKING MEASUREMENTS ON REDUCED PLANS, THE ABOVE SCALES MAY BE USED.

J.U.L.I.E.
JOINT UTILITY LOCATION INFORMATION FOR EXCAVATION
1-800-892-0123
OR 811

PROJECT ENGINEER: CHERYL KEPLAR
SQUAD LEADER: PHILLIP SAWYER

CONTRACT NO. 76R51



BOWMAN PUMP STATION

ST. CLAIR COUNTY

GROSS LENGTH = NA
NET LENGTH = NA

AARON M. SCHAFER
062-065354
REGISTERED PROFESSIONAL ENGINEER
OF ILLINOIS
DATE 9/21/2022

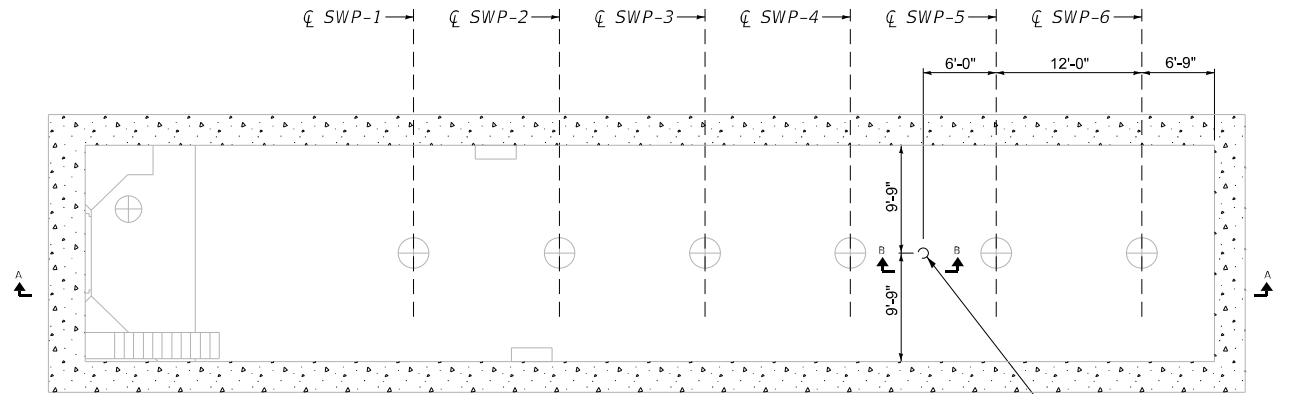
STATE OF ILLINOIS
DEPARTMENT OF TRANSPORTATION

SUBMITTED Dec 7, 2022
[Signature]
REGIONAL ENGINEER

February 3, 2023
[Signature]
ENGINEER OF DESIGN AND ENVIRONMENT

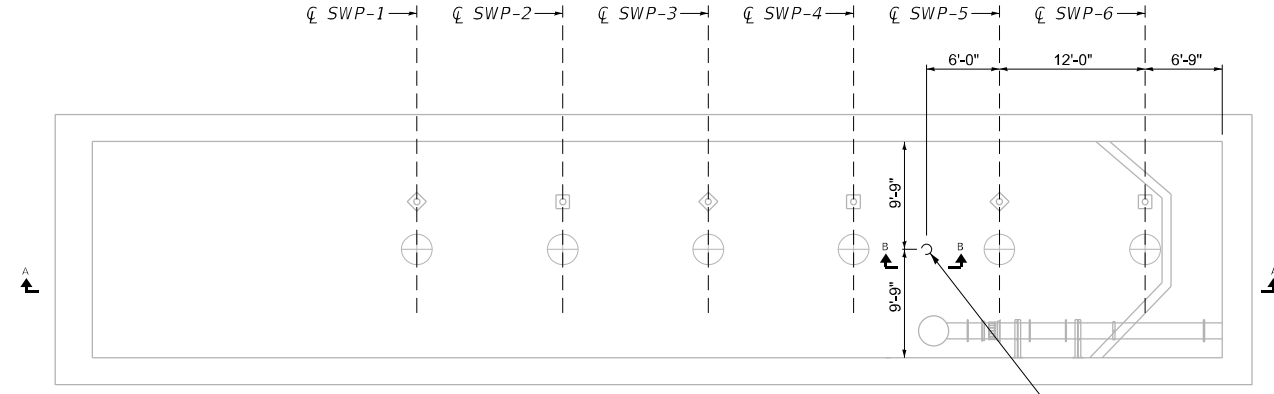
February 3, 2023
[Signature]
DIRECTOR OF HIGHWAYS PROJECT IMPLEMENTATION

PRINTED BY THE AUTHORITY
OF THE STATE OF ILLINOIS



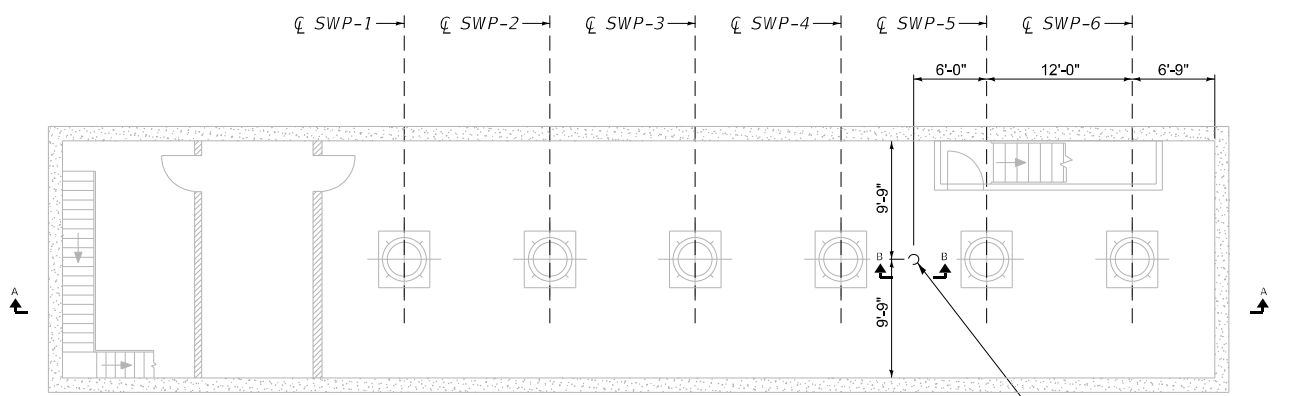
PUMP STATION PLAN ELEV. 380.00

CORE DRILL 8" Ø HOLE FOR 6" Ø STAINLESS STEEL CLEANING PIPE



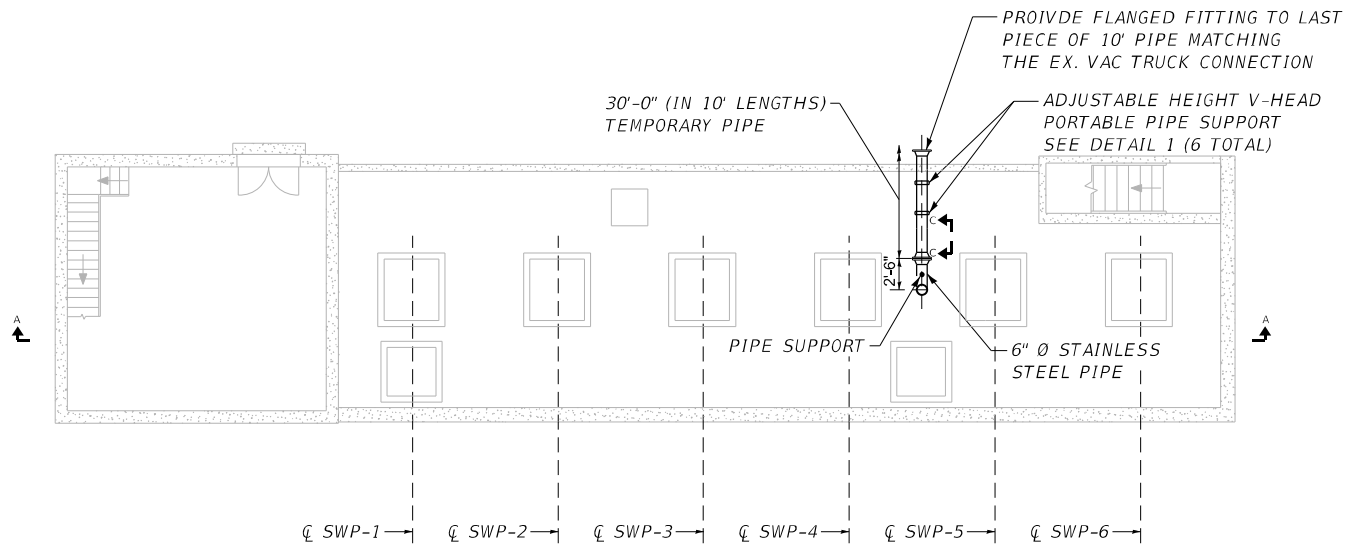
PUMP STATION PLAN ELEV. 393.67

CORE DRILL 8" Ø HOLE FOR 6" Ø STAINLESS STEEL CLEANING PIPE



PUMP STATION PLAN ELEV. 408.00

CORE DRILL 8" Ø HOLE FOR 6" Ø STAINLESS STEEL CLEANING PIPE



PUMP STATION PLAN ELEV. 420.00

- NOTE:
1. THE COST OF ALL PIPING AND PIPING COMPONENT SHALL BE INCLUDED IN "PUMP STATION GENERAL WORK".
 2. SEE SHEET 4 OF 5 FOR SECTIONS A-A, B-B, AND C-C.
 3. SEE SHEET 4 OF 5 FOR DETAIL 1.

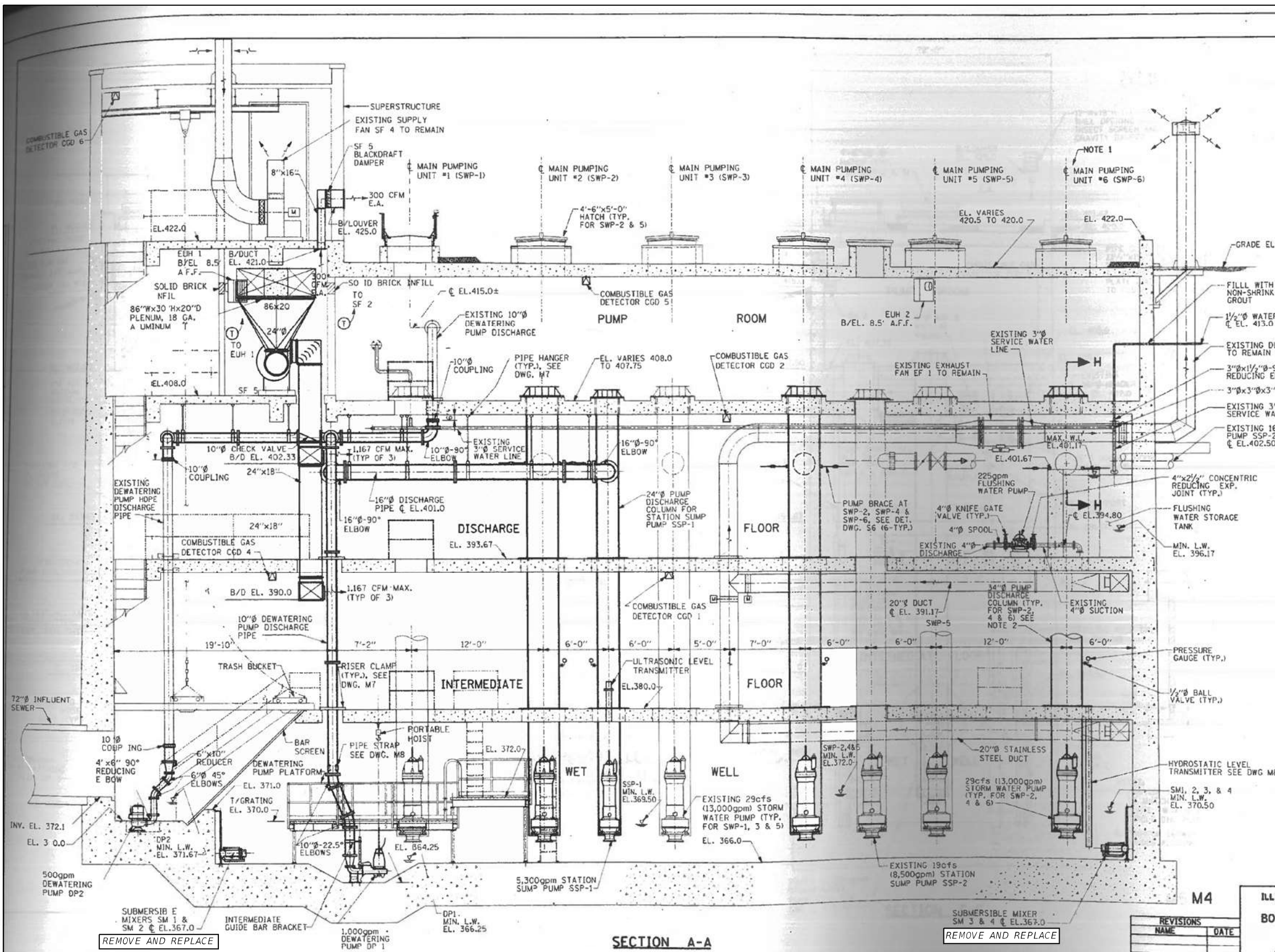


D:\B\Files\192198\Work-Order-12 - Phase 11 Pump Station Blanket Agreement\76R51 - Bowman Pump Station Replacements\CADD_Sheets\0676R51-sht-Plan01.dgn

| | | |
|------------------------------|------------------|-----------|
| USER NAME = ams | DESIGNED - AMS | REVISED - |
| PLOT SCALE = 1/2" = 1' / in. | DRAWN - AMS | REVISED - |
| PLOT DATE = 9/21/2022 | CHECKED - EBB | REVISED - |
| | DATE - 9/13/2022 | REVISED - |

| | | | | |
|---------------------------|--------------------------|-----------|--------------------|-----------|
| F.A.U. RTE. | SECTION | COUNTY | TOTAL SHEETS | SHEET NO. |
| 9153 | DIST 8 DEEP WELLS 2023-2 | ST. CLAIR | 5 | 3 |
| ILLINOIS FED. AID PROJECT | | | CONTRACT NO. 76R51 | |

| | | | | |
|---------------------|------------|------------------|--------------|-----------|
| F.A.U. RTE. | SECTION | COUNTY | TOTAL SHEETS | SHEET NO. |
| 70 | 02-0121-17 | ST. CLAIR | 77 | 37 |
| FED. ROAD DIST. NO. | ILLINOIS | FED. AID PROJECT | | |



- NOTES:**
- SEE DRAWING M5 FOR ROOF STAIR ACCESS SECTION
 - TUBE PUMP BASE PLATE, COLUMN & DISCHARGE STUB SIZES SHALL BE SIZED TO FIT EXISTING FLOOR OPENING DIMENSIONS WITHOUT INCREASING OPENING SIZE.
 - PROVIDE STAINLESS STEEL HOOKS WITH KELLEM'S CABLE SUPPORTS ON WALLS FOR MIXER CABLES AS REQUIRED.

| REVISIONS | |
|-----------|------|
| NAME | DATE |
| | |
| | |
| | |

ILLINOIS DEPARTMENT OF TRANSPORTATION
BOWMAN AVENUE PUMP STATION
REHABILITATION
MECHANICAL SECTIONS

SCALE: AS SHOWN
DATE: 09-12-06
DRAWN BY: CTM
CHECKED BY: KC

ALVORD, BURDICK & HOWSON, L.L.C.
ENGINEERS
CHICAGO

EXISTING ELEVATION - FOR INFORMATION USE ONLY

D:\B\F\150198\Work-Order-12 - Phase 11 Pump Station Blanket Agreement\76651 - Bowman Mxer Replacements\CADD_Sheets\0876651-mt-Elv-02.dgn

KLINGNER & ASSOCIATES, P.C.
Engineers - Architects - Surveyors
616 NORTH ST. QUINCY ILLINOIS 62451-2123-3670
STATE OF ILLINOIS DESIGN FIRM NO. 184-2738

| | | |
|----------------------|----------------|-----------|
| USER NAME = ams | DESIGNED - AMS | REVISED - |
| PLOT SCALE = 2:1 "/> | | |

STATE OF ILLINOIS
DEPARTMENT OF TRANSPORTATION

MIXER REPLACEMENT ELEVATION
BOWMAN PUMP STATION

SCALE: NONE SHEET 1 OF 1 SHEETS STA. TO STA.

| | | | | |
|---------------------------|--------------------------|-----------|--------------|-----------|
| F.A.U. RTE. | SECTION | COUNTY | TOTAL SHEETS | SHEET NO. |
| 9153 | DIST 8 DEEP WELLS 2023-2 | ST. CLAIR | 5 | 5 |
| CONTRACT NO. 76R51 | | | | |
| ILLINOIS FED. AID PROJECT | | | | |