

STATE OF ILLINOIS
DEPARTMENT OF TRANSPORTATION

F.A.I. RTE.	SECTION	COUNTY	TOTAL SHEETS	SHEET NO.
57	FAI 0057 22 BJ	COOK	28	1
		ILLINOIS	CONTRACT NO. 62T97	

FOR INDEX OF SHEETS, SEE SHEET NO. 2

TRAFFIC DATA

STRUCTURE NO. 016-2033
I-57 AT 123RD STREET

I-57:
2021 ADT = 120,800
SPEED LIMIT = 55 MPH

123RD STREET:
2018 ADT = 3,175
SPEED LIMIT = 35 MPH

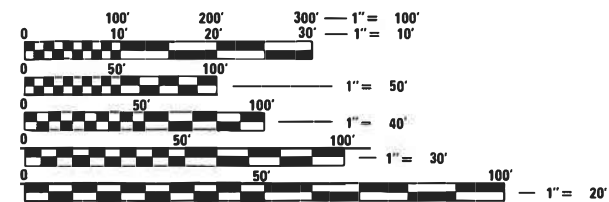
**PROPOSED
HIGHWAY PLANS**

**FAI ROUTE 57: I-57
AT 123RD STREET
SECTION: FAI 0057 22 BJ
BRIDGE JOINT REPAIR AND SIDEWALKS
COOK COUNTY**

C-91-316-22

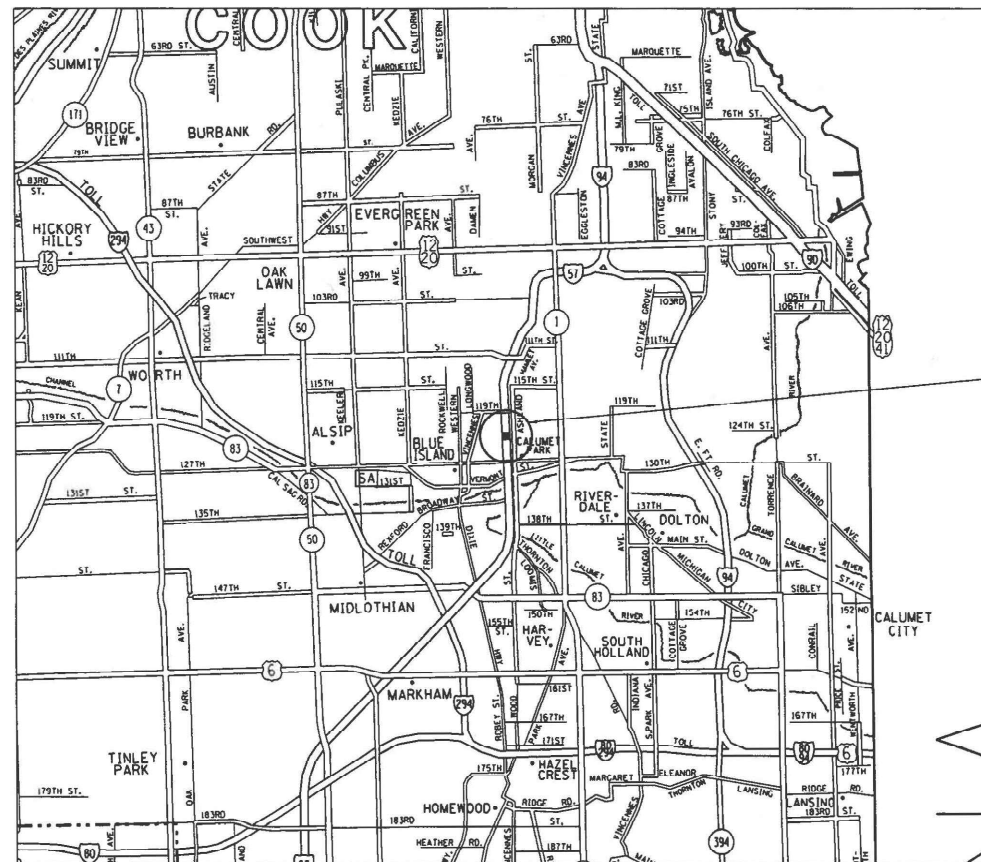
R 14 E

THIS IMPROVEMENT IS LOCATED IN THE
VILLAGE OF CALUMET PARK



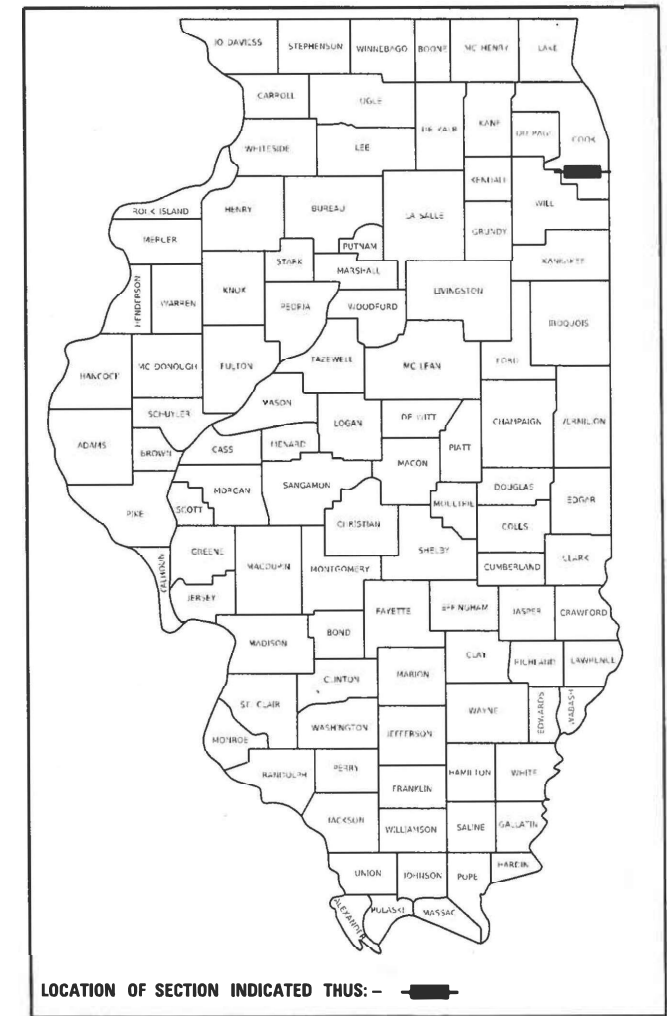
FULL SIZE PLANS HAVE BEEN PREPARED USING STANDARD ENGINEERING SCALES. REDUCED SIZED PLANS WILL NOT CONFORM TO STANDARD SCALES. IN MAKING MEASUREMENTS ON REDUCED PLANS, THE ABOVE SCALES MAY BE USED.

J.U.L.I.E.
JOINT UTILITY LOCATION INFORMATION FOR EXCAVATORS
1-800-892-0123
OR 811



IMPROVEMENT LOCATION:
I-57 AT 123RD STREET
STRUCTURE NO.:
016-2033
VILLAGE OF CALUMET PARK

D-91-263-22



LOCATION OF SECTION INDICATED THIS: - [black rectangle]

STATE OF ILLINOIS
DEPARTMENT OF TRANSPORTATION

SUBMITTED DECEMBER 8 2022
Jose Rios Lopez
REGIONAL ENGINEER

February 3, 2023
[Signature]
ENGINEER OF DESIGN AND ENVIRONMENT

February 3, 2023
[Signature]
DIRECTOR OF HIGHWAYS PROJECT IMPLEMENTATION

PROJECT ENGINEER: RODRIGO LEDEZMA (847) 705-4580
PROJECT MANAGER: J. ALAIN MIDY (847) 221-3056

GROSS LENGTH = 478 FT. = 0.091 MILE
NET LENGTH = 478 FT. = 0.091 MILE

CONTRACT NO. 62T97

PRINTED BY THE AUTHORITY
OF THE STATE OF ILLINOIS

INDEX OF SHEETS

1.	COVER SHEET
2.	INDEX OF SHEETS, STATE STANDARDS AND GENERAL NOTES
3 - 4.	SUMMARY OF QUANTITIES
5.	DETOUR SIGNING PLAN
6 - 12.	BRIDGE REPAIR PLANS
13 - 22	UNDERPASS LIGHTING PLANS
23.	TRAFFIC CONTROL AND PROTECTION FOR SIDE ROADS, INTERSECTIONS, AND DRIVEWAYS (TC-10)
24.	DETOUR SIGNING FOR CLOSING STATE HIGHWAYS (TC-21)
25.	ARTERIAL ROAD INFORMATION SIGN (TC-22)
26.	MISC. ELECTRICAL DETAILS SHEET A (BE-702)
27.	TEMPORARY AERIAL CABLE INSTALLATION (BE-801)
28.	SUSPENDED MOUNT LED UNDERPASS LUMINAIRE INSTALLATION DETAILS (BE-901)

STATE STANDARDS

701101-02	OFF-RD OPERATIONS, 2L, 2W, MORE THAN 15' (4.5m) AWAY
701006-05	OFF-RD OPERATIONS, 2L, 2W, 15' (4.5m) TO 24" (600 mm) FROM PAVEMENT EDGE
701301-04	LANE CLOSURE, 2L, 2W, SHORT TIME OPERATIONS
701311-03	LANE CLOSURE 2L, 2W MOVING OPERATIONS - DAY ONLY
701400-11	APPROACH TO LANE CLOSURE, FREEWAY / EXPRESSWAY
701401-13	LANE CLOSURE, FREEWAY / EXPRESSWAY
701428-01	TRAFFIC CONTROL SETUP AND REMOVAL FREEWAY / EXPRESSWAY
701501-06	URBAN LANE CLOSURE, 2L, 2W, UNDIVIDED
701801-06	SIDEWALK, CORNER OR CROSSWALK CLOSURE
701901-08	TRAFFIC CONTROL DEVICES

GENERAL NOTES

1. THE CONTRACTOR WILL NOT BE ALLOWED TO SET UP A YARD OR FIELD OFFICE ON STATE PROPERTY WITHOUT WRITTEN PERMISSION FROM THE DEPARTMENT.
2. IT SHALL BE THE CONTRACTOR'S RESPONSIBILITY TO VERIFY ALL DIMENSIONS AND CONDITIONS EXISTING IN THE FIELD PRIOR TO CONSTRUCTION AND ORDERING OF MATERIALS.
3. THE CONTRACTOR SHALL CONTACT THE DISTRICT ONE TRAFFIC CONTROL SUPERVISOR AT KALPANA.KANNAN-HOSADURGA@ILLINOIS.GOV FOR ARTERIALS AND (847) 705-4151 FOR EXPRESSWAYS A MINIMUM OF 72 HOURS IN ADVANCE OF BEGINNING WORK.
4. THE CONTRACTOR SHALL BE RESPONSIBLE FOR THE NOTIFICATION OF ALL EMERGENCY SERVICES, SCHOOL DISTRICTS, I.D.O.T.'S COMMUNICATIONS CENTER, SPRINGFIELD TRUCK PERMIT SECTION AND OTHER AGENCIES AFFECTED BY THE CLOSURE. THE CONTRACTOR SHALL ALSO BE RESPONSIBLE FOR POSTING SIGNS THAT WILL INDICATE THE DATES THE CLOSURE WILL BE IN PLACE.
5. INSTALL ALL CHANGEABLE MESSAGE SIGNS, INFORMING THE PUBLIC OF THE DETOUR, AT LEAST TWO WEEKS PRIOR TO THE ROADWAY CLOSURE.
6. THE CONTRACTOR SHALL TAKE NECESSARY PRECAUTIONS TO ENSURE THAT NO DEBRIS WILL ENDANGER OR INTERFERE WITH TRAFFIC ON THE ROADWAY BENEATH THE BRIDGE ACCORDING TO ARTICLE 107.09 OF THE STANDARD SPECIFICATIONS. THIS WORK WILL NOT BE PAID FOR SEPARATELY BUT SHALL BE INCLUDED IN THE CONTRACT UNIT PRICE FOR THE APPROPRIATE PAY ITEM INVOLVED AND NO ADDITIONAL COMPENSATION WILL BE ALLOWED.

MODEL: Default
 FILE NAME: \\sulfur-cw-bentley.com\FW\DOT\Documents\DOT Office\District 1\Project\ID126322\CADD\DATA\Design\ID126322-Sub\agencenote.dgn

USER NAME = Jacob.Roth	DESIGNED -	REVISED -
	DRAWN -	REVISED -
PLOT SCALE = 100,0000 ' / in.	CHECKED -	REVISED -
PLOT DATE = 12/29/2022	DATE -	REVISED -

**STATE OF ILLINOIS
DEPARTMENT OF TRANSPORTATION**

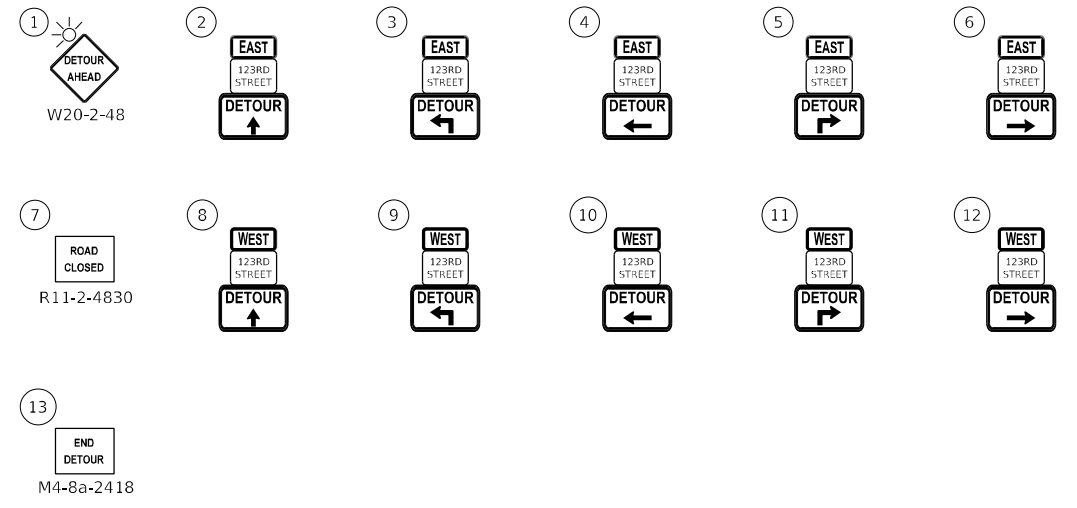
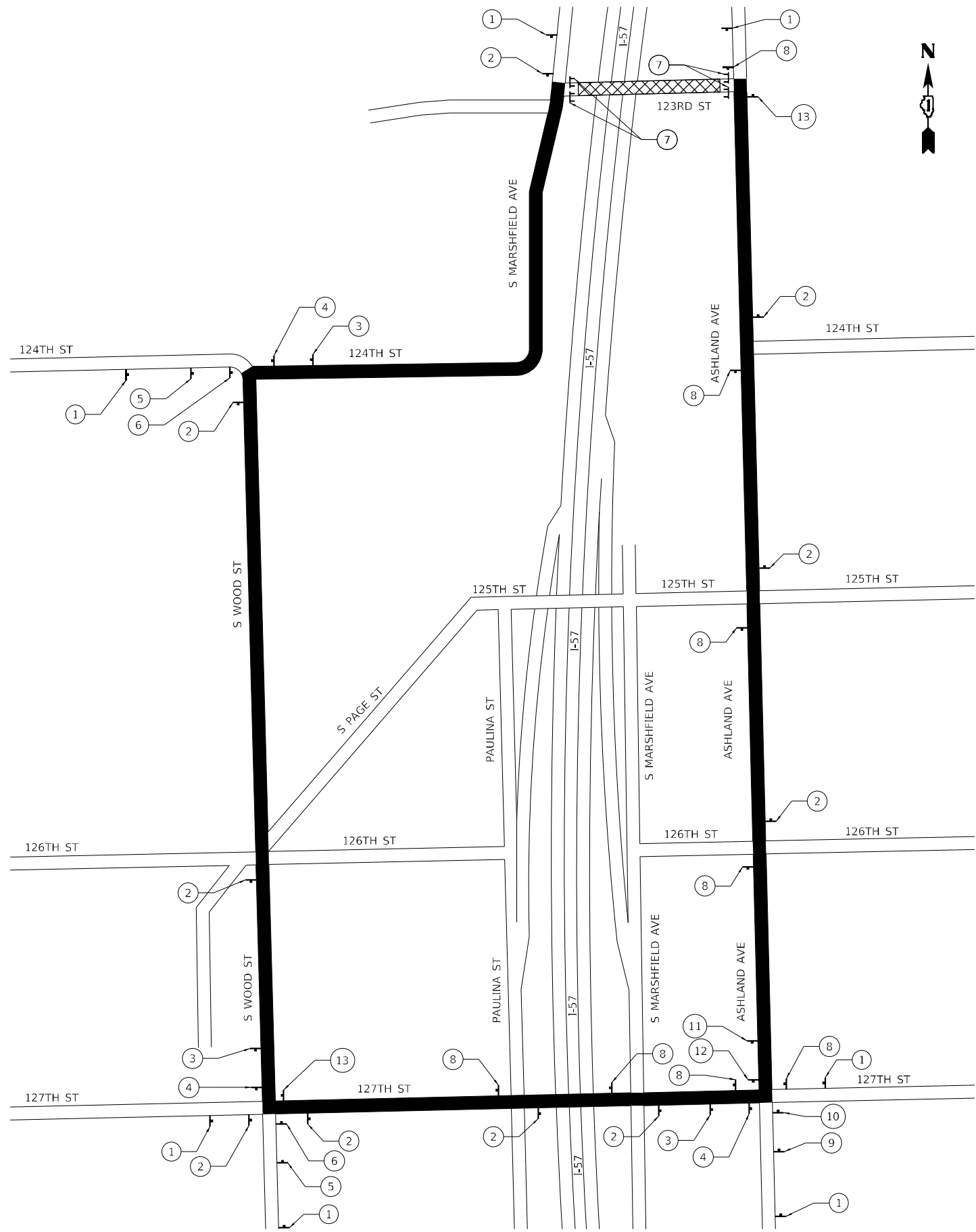
**INDEX OF SHEETS, STATE STANDARDS AND GENERAL NOTES
I-57 AT 123RD STREET**

SCALE: NTS SHEET 1 OF 1 SHEETS STA. TO STA.

F.A.I. RTE.	SECTION	COUNTY	TOTAL SHEETS	SHEET NO.
57	FAI 0057 22 BJ	COOK	28	2
CONTRACT NO. 62T97				
ILLINOIS			FED. AID PROJECT	

SUMMARY OF QUANTITIES				CONSTRUCTION TYPE CODE					SUMMARY OF QUANTITIES				CONSTRUCTION TYPE CODE						
CODE NO	ITEM	UNIT	URBAN TOTAL QUANTITIES	0014 100% STATE	0021 LIGHTING 100% STATE					CODE NO	ITEM	UNIT	URBAN TOTAL QUANTITIES	0014 100% STATE	0021 LIGHTING 100% STATE				
42400200	PORTLAND CEMENT CONCRETE SIDEWALK 5 INCH	SO FT	300	300						* 81702110	ELECTRIC CABLE IN CONDUIT, 600V (XLP-TYPE USE) 1/C NO. 10	FOOT	460		460				
44000600	SIDEWALK REMOVAL	SO FT	300	300						* 81800300	AERIAL CABLE, 3-1/C NO. 2 WITH MESSENGER WIRE	FOOT	280		280				
58600101	GRANULAR BACKFILL FOR STRUCTURES	CU YD	6	6						* 82110027	LUMINAIRE, LED, UNDERPASS, SUSPENDED, OUTPUT DESIGNATION E	EACH	4		4				
59000200	EPOXY CRACK INJECTION	FOOT	5	5						* 84200600	REMOVAL OF LIGHTING UNIT, NO SALVAGE	EACH	8		8				
59100100	GEOCOMPOSITE WALL DRAIN	SO YD	6.7	6.7						X0323491	SLOPE WALL CRACK SEALING	FOOT	398	398					
67100100	MOBILIZATION	L SUM	1	1						X0900022	BRIDGE DRAINAGE SYSTEM REPAIR	FOOT	15	15					
70107025	CHANGEABLE MESSAGE SIGN	CAL DA	14	14						X6700407	ENGINEER'S FIELD OFFICE, TYPE A (D1)	CAL MO	6	6					
* 81100320	CONDUIT ATTACHED TO STRUCTURE, 1" DIA., PVC COATED GALVANIZED STEEL	FOOT	460		460					X7010216	TRAFFIC CONTROL AND PROTECTION (SPECIAL)	L SUM	1	1					
* 81100805	CONDUIT ATTACHED TO STRUCTURE, 3" DIA., PVC COATED GALVANIZED STEEL	FOOT	20		20					X7011015	TRAFFIC CONTROL AND PROTECTION (EXPRESSWAYS)	L SUM	1	1					
* 81300220	JUNCTION BOX, STAINLESS STEEL, ATTACHED TO STRUCTURE, 6" X 6" X 4"	EACH	4		4					Z0012754	STRUCTURAL REPAIR OF CONCRETE (DEPTH EQUAL TO OR LESS THAN 5 INCHES)	SO FT	273	273					
* 81300530	JUNCTION BOX, STAINLESS STEEL, ATTACHED TO STRUCTURE, 12" X 10" X 6"	EACH	2		2					Z0012755	STRUCTURAL REPAIR OF CONCRETE (DEPTH GREATER THAN 5 INCHES)	SO FT	14	14					
* 81300840	JUNCTION BOX, STAINLESS STEEL, ATTACHED TO STRUCTURE, 18" X 18" X 12"	EACH	2		2														
* 81603081	UNIT DUCT, 600V, 3-1C NO.2, 1/C NO.4 GROUND, (XLP-TYPE USE), 1 1/2" DIA. POLYETHYLENE	FOOT	320		320														
	* = SPECIALTY ITEM																		

MODEL: Default
 FILE NAME: \\sldet-pw-beadley.com\PW\DOT\Documents\DOT Office\Dir\rdet_1\Project\126322\CADD\data\Design\126322-ash-ban.dgn



NOTE:

INSTALL ALL CHANGEABLE MESSAGE SIGNS, INFORMING THE PUBLIC OF THE DETOUR, AT LEAST TWO WEEKS PRIOR TO THE ROADWAY CLOSURE

ROUTE MARKERS

SPECIAL 24"X18"
 6" BLACK LETTERS ON ORANGE
 REFLECTIVE BACKGROUND

ARROW SIGNS

↑ M4-9-3024
 ↙ M4-9-3024
 ← M4-9-3024
 ↘ M4-9-3024
 → M4-9-3024

CARDINAL DIRECTION SIGNS

EAST M3-2-2412
 WEST M3-4-2412

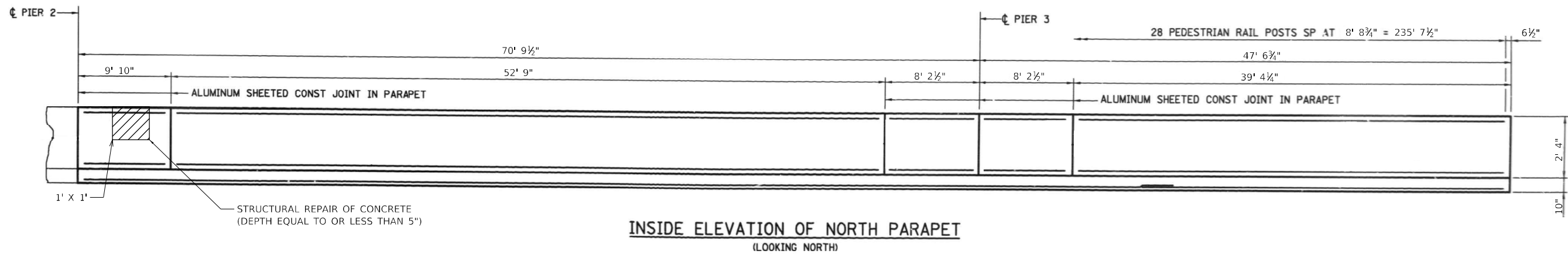
USER NAME = Jacob,Roth	DESIGNED -	REVISED -
DRAWN -	REVISED -	
PLOT SCALE = 100,0000' / in.	CHECKED -	REVISED -
PLOT DATE = 12/29/2022	DATE -	REVISED -

**STATE OF ILLINOIS
 DEPARTMENT OF TRANSPORTATION**

**DETOUR SIGNING PLAN
 I-57 AT 123RD STREET**

SCALE: NTS SHEET 1 OF 1 SHEETS STA. TO STA.

F.A.I. RTE.	SECTION	COUNTY	TOTAL SHEETS	SHEET NO.
57	FAI 0057 22 BJ	COOK	28	5
CONTRACT NO. 62T97				
ILLINOIS FED. AID PROJECT				



INSIDE ELEVATION OF NORTH PARAPET
(LOOKING NORTH)

BILL OF MATERIALS		
ITEM	UNIT	QTY
STRUCTURAL REPAIR OF CONCRETE (DEPTH EQUAL TO OR LESS THAN 5 INCHES)	SQ FT	1

MODEL: Default
 FILE: \\nafile.pw.us\idirect-pw-bentley.com\PW\DOT\Documents\DOT Office\Dir\rdet_1\Project\ID126322\CADD\data\Design\ID126322-ah-1.dwg

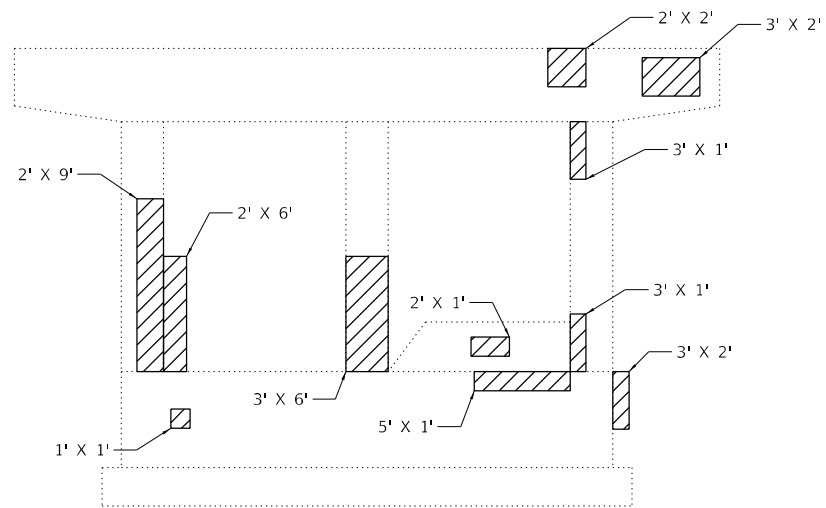
USER NAME = Jacob.Roth	DESIGNED -	REVISED -
	DRAWN -	REVISED -
PLOT SCALE = 100,0000 ' / in.	CHECKED -	REVISED -
PLOT DATE = 1/31/2023	DATE -	REVISED -

**STATE OF ILLINOIS
DEPARTMENT OF TRANSPORTATION**

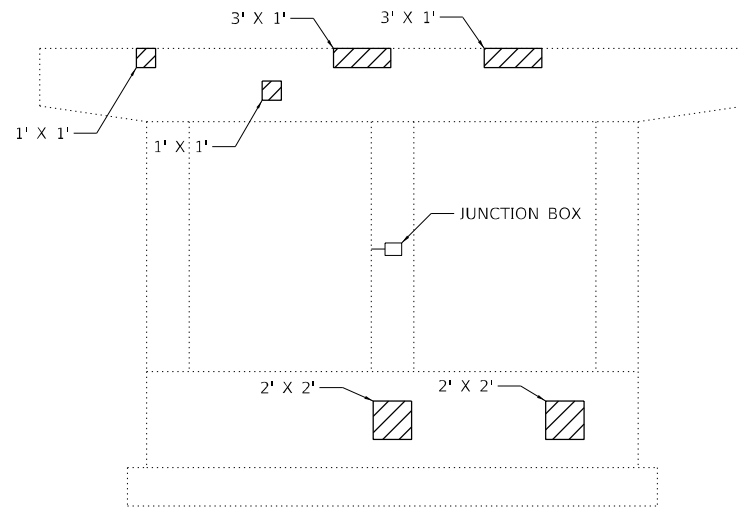
**SUPERSTRUCTURE REPAIRS
I-57 AT 123RD STREET**

SCALE: SHEET 3 OF 7 SHEETS STA. TO STA.

F.A.I. RTE.	SECTION	COUNTY	TOTAL SHEETS	SHEET NO.
57	FAI 0057 22 BJ	COOK	28	8
ILLINOIS FED. AID PROJECT			CONTRACT NO. 62T97	



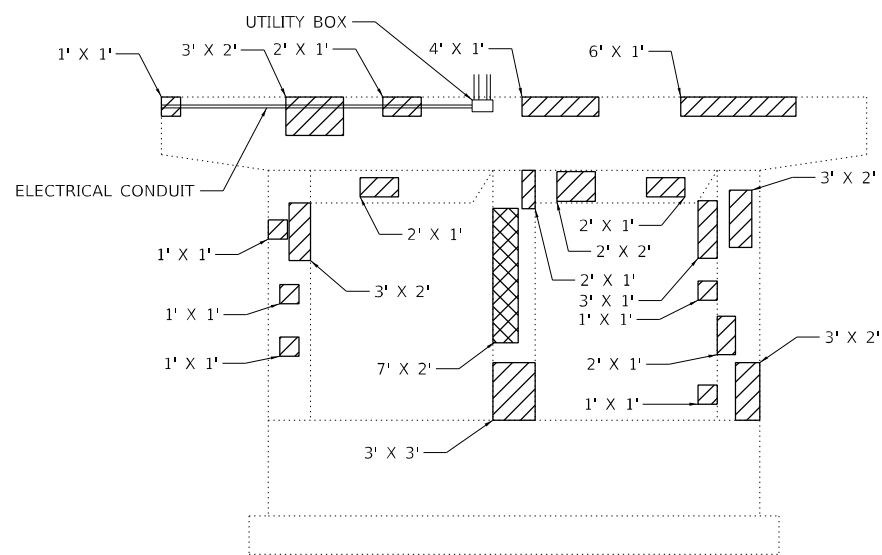
PIER 1
(EAST FACE)



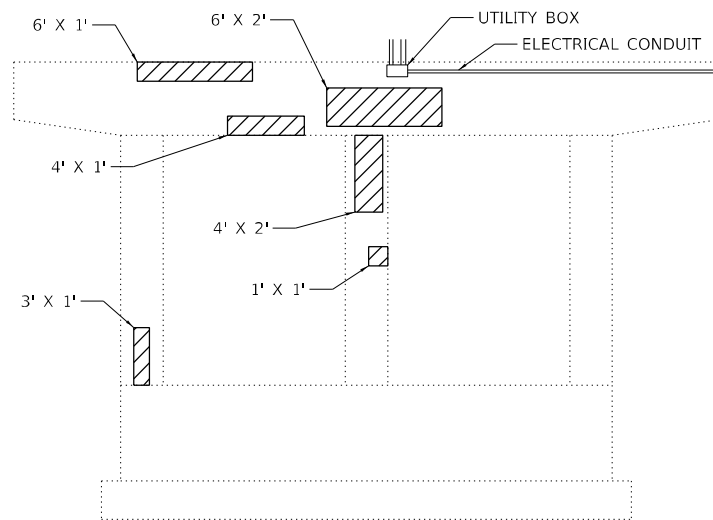
PIER 1
(WEST FACE)

LEGEND

- STRUCTURAL REPAIR OF CONCRETE (DEPTH EQUAL TO OR LESS THAN 5")
- STRUCTURAL REPAIR OF CONCRETE (DEPTH GREATER THAN 5")



PIER 2
(EAST FACE)



PIER 2
(WEST FACE)

BILL OF MATERIALS		
ITEM	UNIT	QTY
STRUCTURAL REPAIR OF CONCRETE (DEPTH EQUAL TO OR LESS THAN 5 INCHES)	SQ FT	194
STRUCTURAL REPAIR OF CONCRETE (DEPTH GREATER THAN 5 INCHES)	SQ FT	14

MODEL: Default
 FILE NAME: \\sldt-cw-bentley.com\P\INDOT\Documents\DOT Office\Dir\rdet_1\Project\12126322\CADD\Drawings\12126322-Substructure.dwg
 PROJECT: 12126322

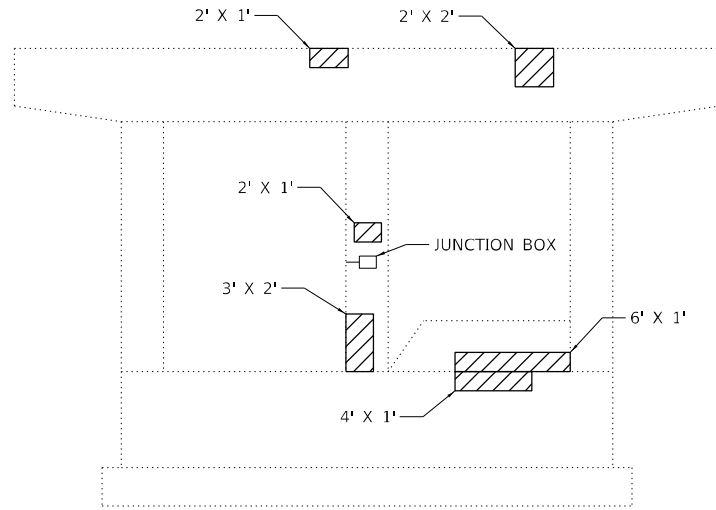
USER NAME = Jacob.Roth	DESIGNED -	REVISED -
PLOT SCALE = 100,0000' / in.	DRAWN -	REVISED -
PLOT DATE = 1/9/2023	CHECKED -	REVISED -
	DATE -	REVISED -

STATE OF ILLINOIS
DEPARTMENT OF TRANSPORTATION

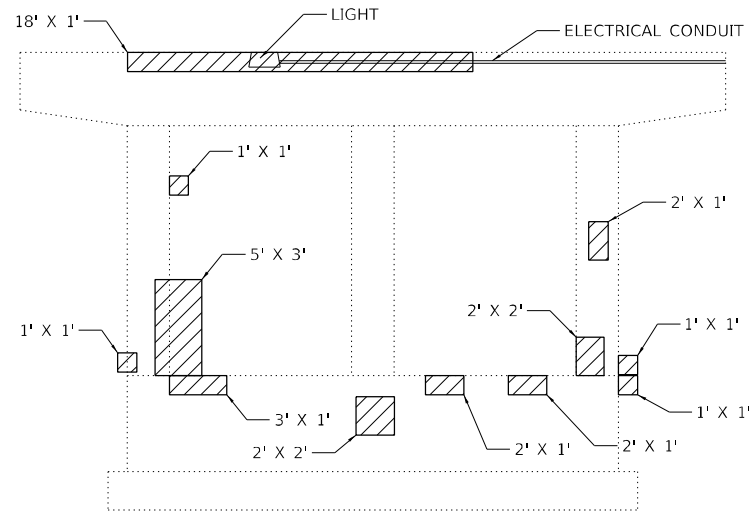
SUBSTRUCTURE REPAIRS - PIERS 1 & 2
I-57 AT 123RD STREET

SCALE: SHEET 4 OF 7 SHEETS STA. TO STA.

F.A.I. RTE. 57	SECTION FAI 0057 22 BJ	COUNTY COOK	TOTAL SHEETS 28	SHEET NO. 9
ILLINOIS FED. AID PROJECT			CONTRACT NO. 62T97	



PIER 3
(EAST FACE)



PIER 3
(WEST FACE)

LEGEND

- STRUCTURAL REPAIR OF CONCRETE
(DEPTH EQUAL TO OR LESS THAN 5")
- STRUCTURAL REPAIR OF CONCRETE
(DEPTH GREATER THAN 5")

BILL OF MATERIALS		
ITEM	UNIT	QTY
STRUCTURAL REPAIR OF CONCRETE (DEPTH EQUAL TO OR LESS THAN 5 INCHES)	SQ FT	78

MODEL: Default
 FILE NAME: p:\subcontract-behavior.com\PIV\DOT\Documents\DOT Office\Dir\dtdt_1\Project\126322\CADD\data\Design\126322-ah-1.dwg

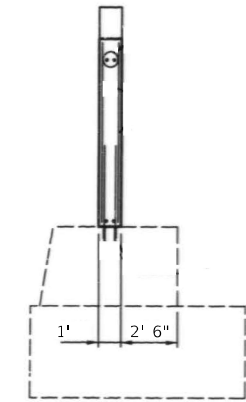
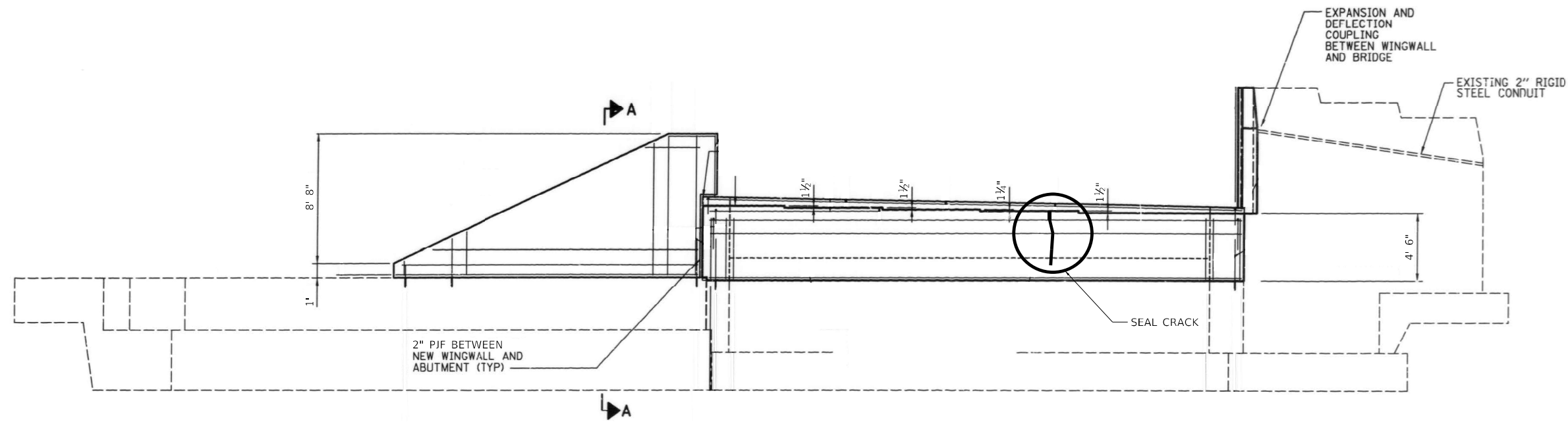
USER NAME = Jacob.Roth	DESIGNED -	REVISED -	
	DRAWN -	REVISED -	
PLOT SCALE = 100,0000 ' / in.	CHECKED -	REVISED -	
PLOT DATE = 1/9/2023	DATE -	REVISED -	

**STATE OF ILLINOIS
DEPARTMENT OF TRANSPORTATION**

**SUBSTRUCTURE REPAIRS – PIER 3
I-57 AT 123RD STREET**

SCALE: SHEET 5 OF 7 SHEETS STA. TO STA.

F.A.I. RTE.	SECTION	COUNTY	TOTAL SHEETS	SHEET NO.
57	FAI 0057 22 BJ	COOK	28	10
CONTRACT NO. 62T97				
ILLINOIS FED. AID PROJECT				



SECTION A-A

ELEVATION

BILL OF MATERIALS		
ITEM	UNIT	QTY
EPOXY CRACK INJECTION	FOOT	5

MODEL: Default
 FILE: \\na11f01-pw-bentley.com\PW\DOT\Documents\DOT Office\Dir\drt_1\Project\126322\CADD\Drawings\126322-abt-wal.dwg

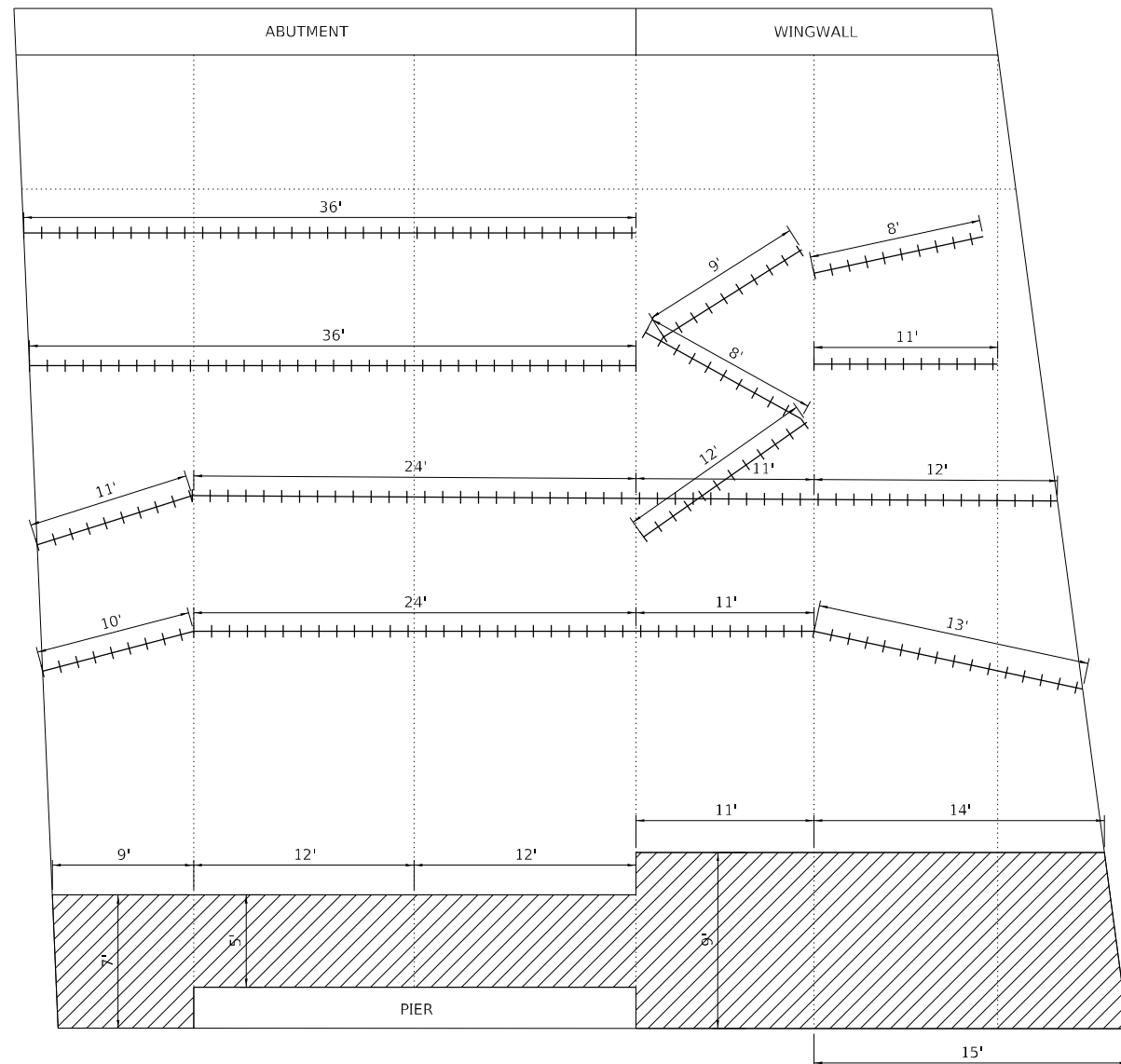
USER NAME = Jacob.Roth	DESIGNED -	REVISED -
PLOT SCALE = 100,0000 ' / in.	DRAWN -	REVISED -
PLOT DATE = 1/31/2023	CHECKED -	REVISED -
	DATE -	REVISED -

STATE OF ILLINOIS
DEPARTMENT OF TRANSPORTATION

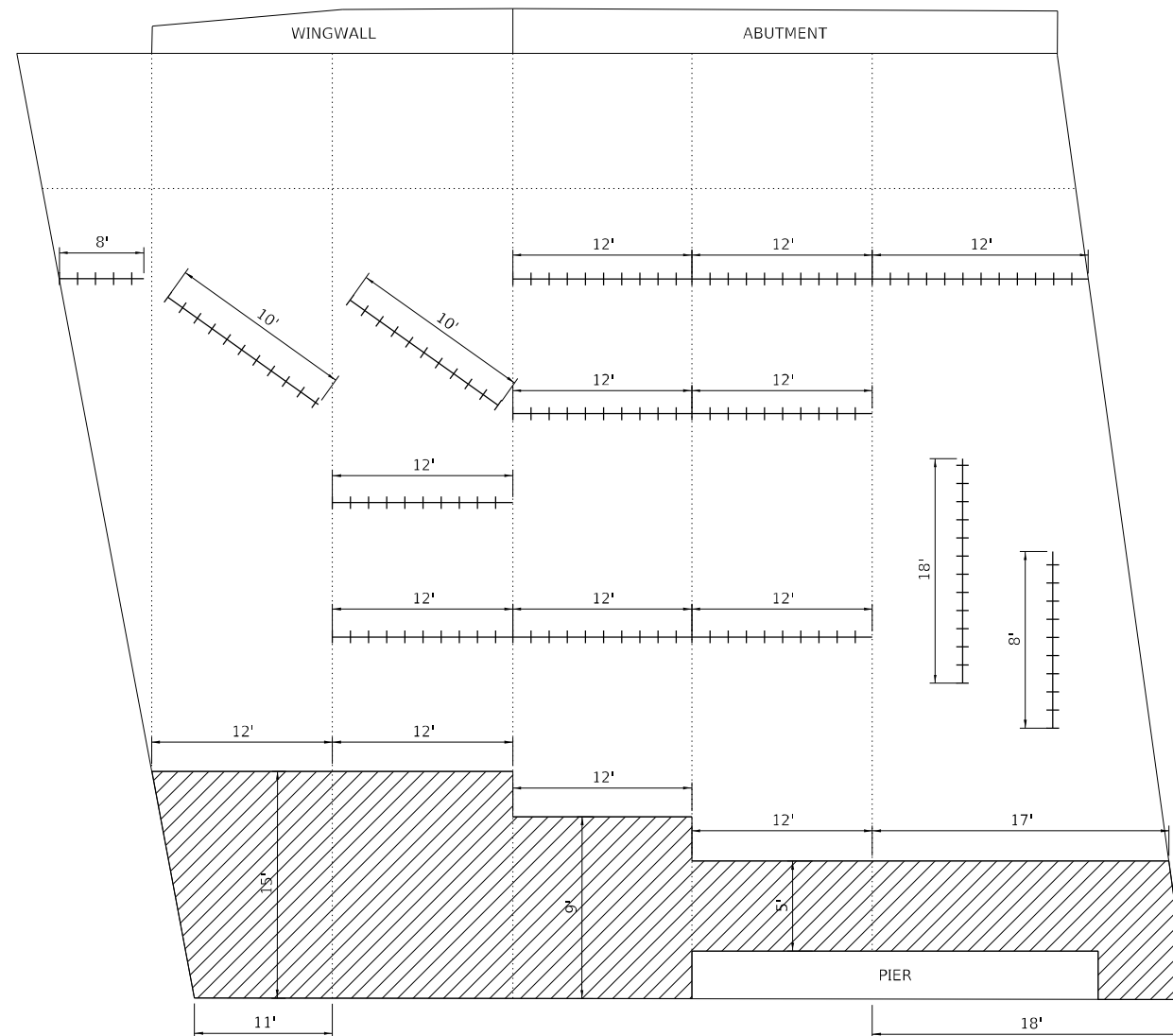
WEST ABUTMENT - CRACK SEALING
I-57 AT 123RD STREET

SCALE: SHEET 6 OF 7 SHEETS STA. TO STA.

F.A.I. RTE.	SECTION	COUNTY	TOTAL SHEETS	SHEET NO.
57	FAI 0057 22 BJ	COOK	28	11
CONTRACT NO. 62T97				
ILLINOIS FED. AID PROJECT				



EAST SLOPEWALL



WEST SLOPEWALL

LEGEND

- SLOPE WALL CRACK SEALING
- ▨ SLOPE WALL REPAIR

BILL OF MATERIALS		
ITEM	UNIT	QTY
SLOPE WALL CRACK SEALING	FOOT	398
SLOPE WALL REPAIR	SQ YD	136

MODEL: Default
 FILE: \\na11e-pw-bentley.com\PW\DOT\Documents\DOT Office\District 11\Project\1126322\CADD\Drawings\1126322-11r-11a.dwg

USER NAME = Jacob.Roth	DESIGNED -	REVISED -
PLOT SCALE = 100,0000' / in.	DRAWN -	REVISED -
PLOT DATE = 1/9/2023	CHECKED -	REVISED -
	DATE -	REVISED -

**STATE OF ILLINOIS
DEPARTMENT OF TRANSPORTATION**

**SLOPEWALL REPAIRS
I-57 AT 123RD STREET**

SCALE: SHEET 7 OF 7 SHEETS STA. TO STA.

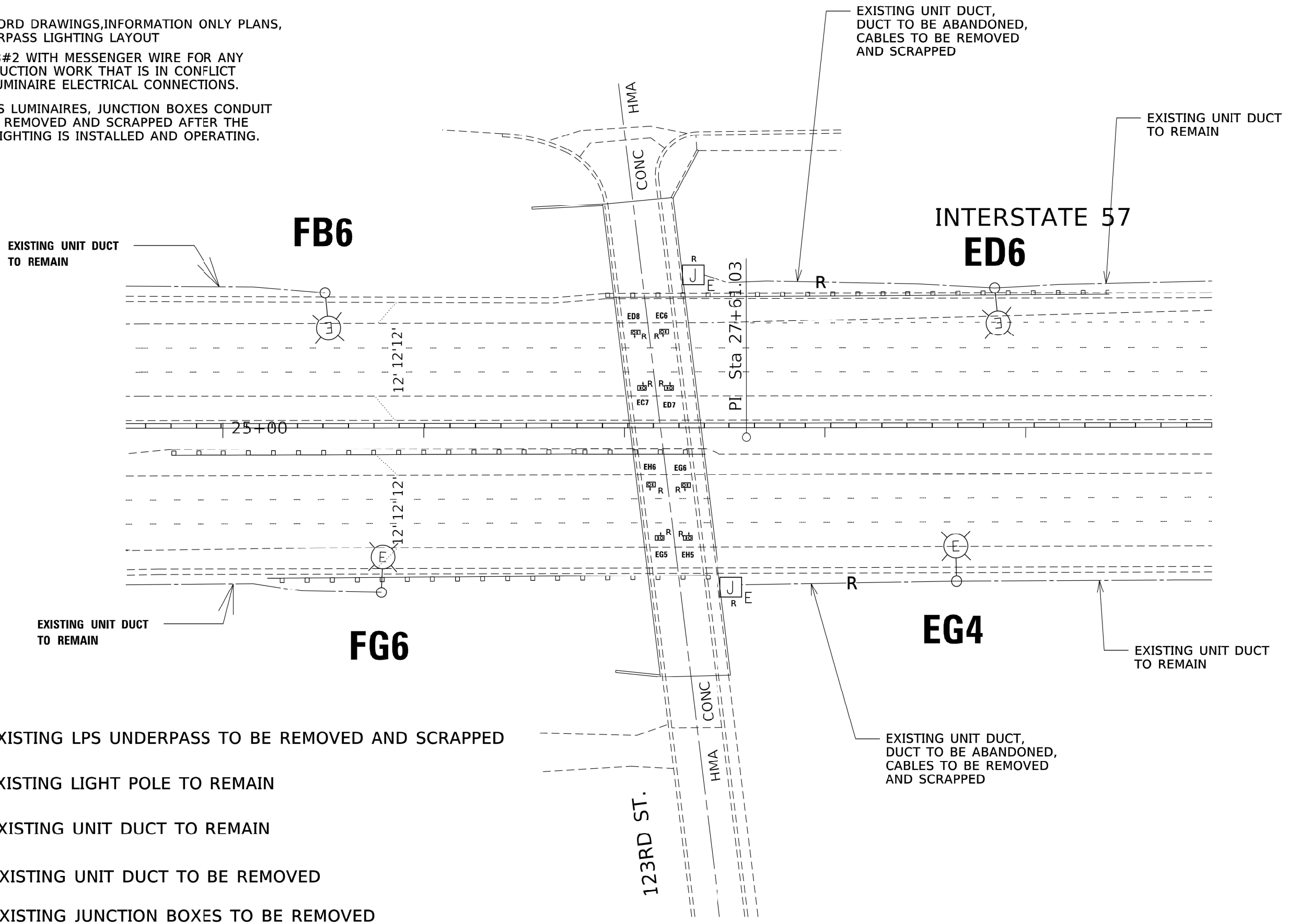
F.A.I. RTE.	SECTION	COUNTY	TOTAL SHEETS	SHEET NO.
57	FAI 0057 22 BJ	COOK	28	12
ILLINOIS FED. AID PROJECT			CONTRACT NO. 62T97	

NOTES

REFER TO THE IDOT RECORD DRAWINGS, INFORMATION ONLY PLANS, FOR THE EXISTING UNDERPASS LIGHTING LAYOUT

INSTALL AERIAL CABLE, 3#2 WITH MESSENGER WIRE FOR ANY BRIDGE OR PIER CONSTRUCTION WORK THAT IS IN CONFLICT WITH THE UNDERPASS LUMINAIRE ELECTRICAL CONNECTIONS.

ALL EXISTING UNDERPASS LUMINAIRES, JUNCTION BOXES CONDUIT AND CABLES SHOULD BE REMOVED AND SCRAPPED AFTER THE PROPOSED UNDERPASS LIGHTING IS INSTALLED AND OPERATING.



LEGEND

- EXISTING LPS UNDERPASS TO BE REMOVED AND SCRAPPED
- EXISTING LIGHT POLE TO REMAIN
- EXISTING UNIT DUCT TO REMAIN
- EXISTING UNIT DUCT TO BE REMOVED
- EXISTING JUNCTION BOXES TO BE REMOVED

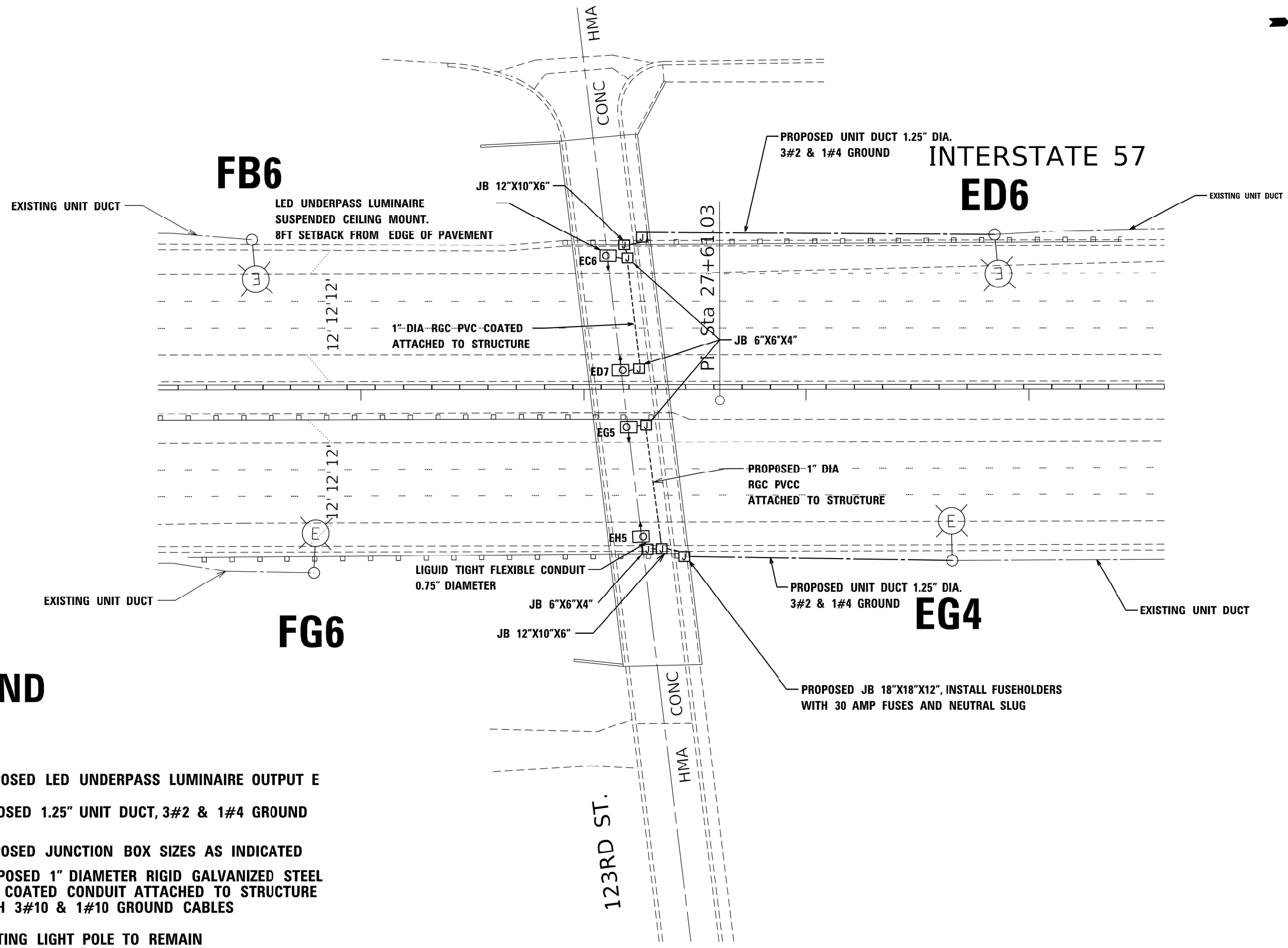
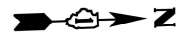
MODEL: Default
 FILE: 123rd St. Underpass Lighting Plan.dwg
 PROJECT: ID: 123rd St. Underpass Lighting Plan
 OFFICE: District 1
 DATE: 12/20/2022

USER NAME = Jacob.Roth	DESIGNED -	REVISED -
PLOT SCALE = 2,000' / in.	DRAWN -	REVISED -
PLOT DATE = 12/20/2022	CHECKED -	REVISED -
	DATE -	REVISED -

**STATE OF ILLINOIS
DEPARTMENT OF TRANSPORTATION**

REMOVAL /TEMPORARY UNDERPASS LIGHTING PLAN			
I-57 AT 123RD STREET			
SCALE:	SHEET	OF SHEETS	STA. TO STA.

F.A.I. RTE.	SECTION	COUNTY	TOTAL SHEETS	SHEET NO.
57	FAI 0057 22 BJ	COOK	28	13
CONTRACT NO. 62T97				
ILLINOIS FED. AID PROJECT				



LEGEND

- PROPOSED LED UNDERPASS LUMINAIRE OUTPUT E
- PROPOSED 1.25" UNIT DUCT, 3#2 & 1#4 GROUND
- PROPOSED JUNCTION BOX SIZES AS INDICATED
- PROPOSED 1" DIAMETER RIGID GALVANIZED STEEL PVC COATED CONDUIT ATTACHED TO STRUCTURE WITH 3#10 & 1#10 GROUND CABLES
- EXISTING LIGHT POLE TO REMAIN

MODEL: Default
 FILE: Mainfile
 PROJECT: \\p1\dot\documents\DOT Office\District: 11\Project\126322\CADD\DATA\Design\126322-Sub\Details.dgn

USER NAME = Jacob.Roth	DESIGNED -	REVISED -
	DRAWN -	REVISED -
PLOT SCALE = 2,0000' / in.	CHECKED -	REVISED -
PLOT DATE = 12/20/2022	DATE -	REVISED -

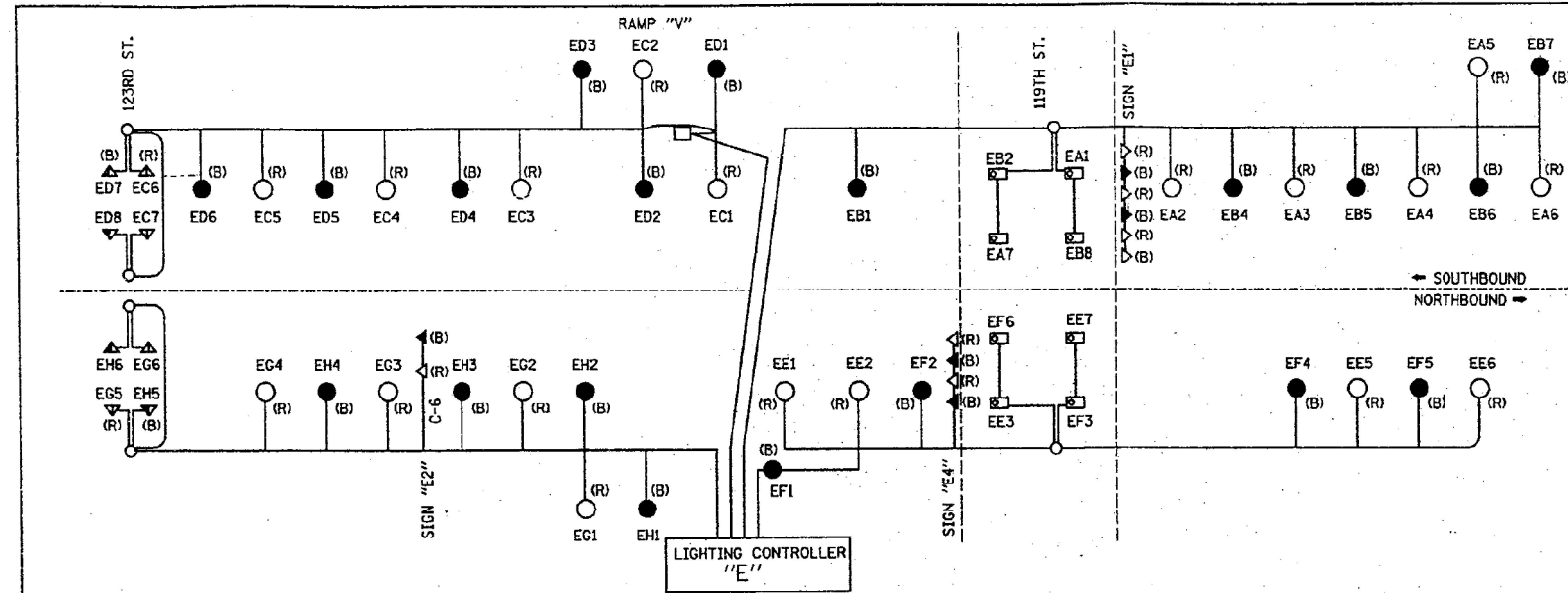
STATE OF ILLINOIS
DEPARTMENT OF TRANSPORTATION

PROPOSED UNDERPASS LIGHTING PLAN
I-57 AT 123RD STREET

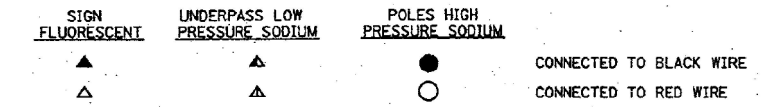
SCALE: SHEET OF SHEETS STA. TO STA.

F.A.I. RTE.	SECTION	COUNTY	TOTAL SHEETS	SHEET NO.
57	FAI 0057 22 BJ	COOK	28	14
CONTRACT NO. 62T97				
ILLINOIS FED. AID PROJECT				

F.A.I. RTE.	SECTION	COUNTY	TOTAL SHEETS	SHEET NO.
57	068-1819 JB	COOK	124	60
STA.		TO STA.		
FED. ROAD DIST. NO.		ILLINOIS FED. AID PROJECT		
CONTRACT 6032Z				



CIRCUIT	RED PHASE		CIRCUIT	BLACK PHASE	
	AMPS	WATTS		AMPS	WATTS
A	13.44	3225	B	13.44	3225
E	10.56	2534	F	10.56	2534

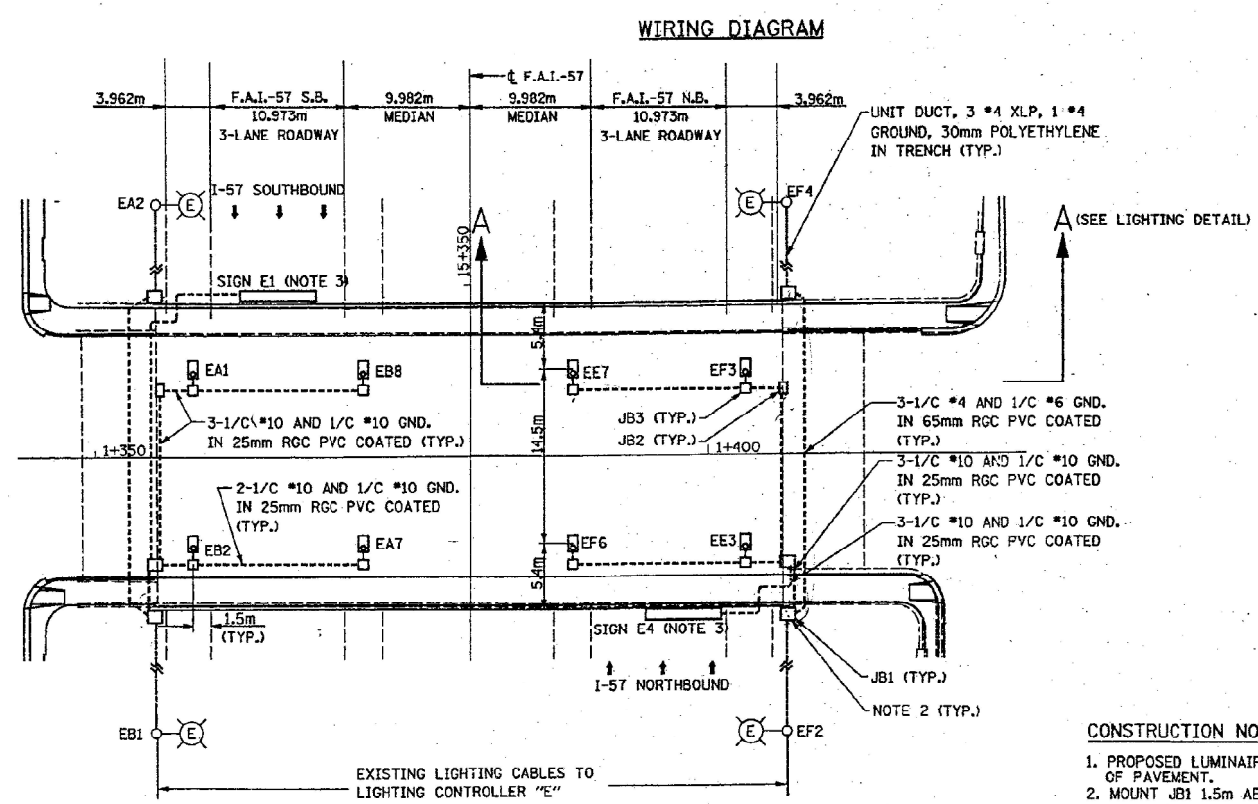


LEGEND

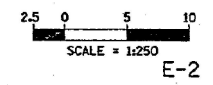
PROPOSED
 EXISTING

UNDERPASS LIGHTING LUMINAIRE, 70W HPS, POSITIONED 1.5m FROM THE EDGE OF TRAVELED PAVEMENT. CIRCUIT NUMBER AS NOTED.
 JUNCTION BOX ATTACHED TO STRUCTURE, SIZE AS NOTED.
 RIGID STEEL CONDUIT, PVC COATED ATTACHED TO STRUCTURE, SIZE AS NOTED.
 EXISTING LIGHTING UNIT TO REMAIN IN PLACE, CIRCUIT NUMBER AS NOTED.
 UNIT DUCT, WITH 3-1/4" #4 & 1/2" #4 GROUND, 600V (XLP), 30mm (1-1/4" DIA.), POLYETHYLENE.

NO.	SIZE (mm)	DESCRIPTION	QUANTITY
JB1	400mmX300mmX150mm	STAINLESS STEEL, ATTACHED TO STRUCTURE	6
JB2	300mmX250mmX150mm	STAINLESS STEEL, ATTACHED TO STRUCTURE	2
JB3	150mmX150mmX100mm	STAINLESS STEEL, ATTACHED TO STRUCTURE	8



- CONSTRUCTION NOTES:**
- PROPOSED LUMINAIRES TO BE MOUNTED 1.5m BACK FROM EDGE OF PAVEMENT.
 - MOUNT JB1 1.5m ABOVE GRADE TO EXISTING ABUTMENT SIDE WALL. PROVIDE 65mm RGC PVC COATED RISER TO JUNCTION BOX TO ACCEPT NEW CABLE DUCT RUN FROM EXISTING LIGHT POLE TO REMAIN. SEE UNDERPASS LIGHTING DETAILS.
 - EXISTING BRIDGE MOUNTED SIGN TO BE DISCONNECTED FOR REMOVAL AND REWIRED TO NEW CIRCUIT FEEDERS IN JB1 UPON RE-ERECTION.



REVISIONS		ILLINOIS DEPARTMENT OF TRANSPORTATION
NAME	DATE	
		19TH STREET OVER I-57 PROPOSED UNDERPASS LIGHTING PLAN SCALE 1:250 DRAWN BY : BO DATE MARCH 2004 CHECKED BY : RD

SINGH SINGH & ASSOCIATES, INC.
CONSULTING ENGINEERS

RECORD DRAWINGS
HECKER AND COMPANY, INC.
 9-20-05
 Art Burke

PROPOSED UNDERPASS LIGHTING PLAN
INFORMATION ONLY

USER NAME = Jacob.Roth	DESIGNED -	REVISED -
PLOT SCALE = 2,000' / in.	DRAWN -	REVISED -
PLOT DATE = 12/20/2022	CHECKED -	REVISED -
	DATE -	REVISED -

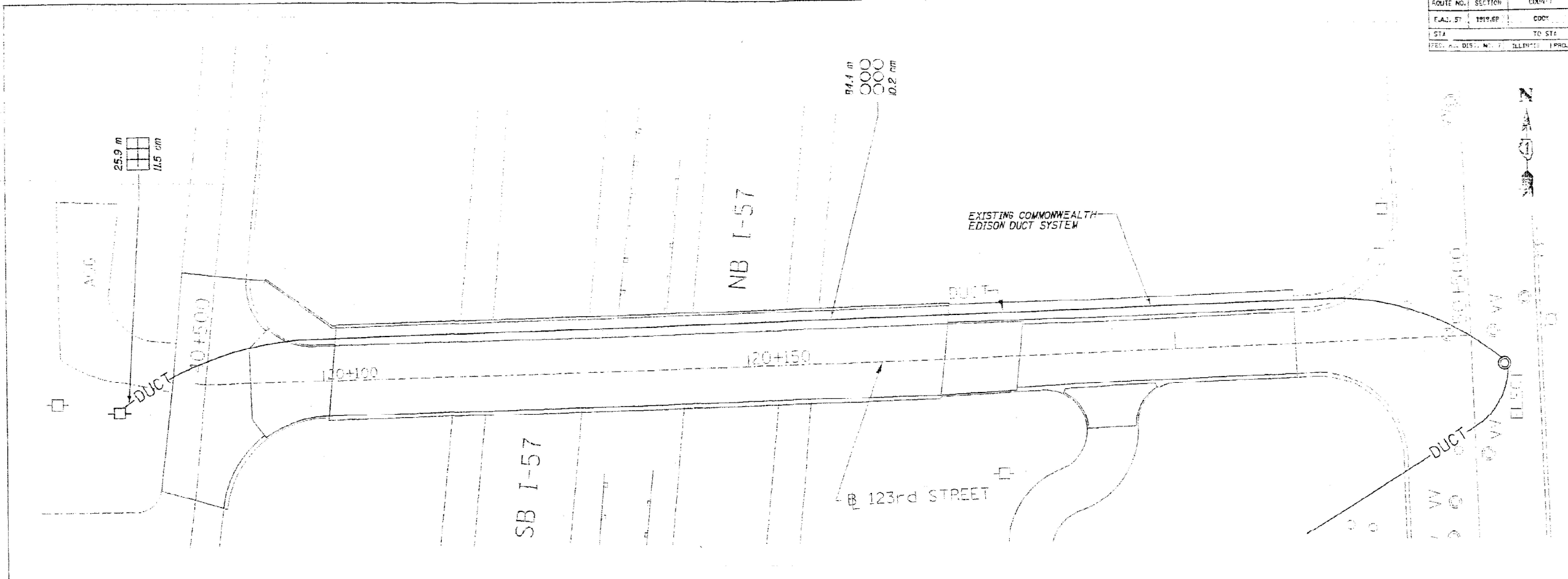
STATE OF ILLINOIS
DEPARTMENT OF TRANSPORTATION

INFORMATION ONLY
I-57 AT 123RD STREET

SCALE: SHEET OF SHEETS STA. TO STA.

F.A.I. RTE.	SECTION	COUNTY	TOTAL SHEETS	SHEET NO.
57	FAI 0057 22 BJ	COOK	28	15
CONTRACT NO. 62T97				
ILLINOIS FED. AID PROJECT				

ROUTE NO.	SECTION	COUNT	TOTAL SHEETS	SHEET NO.
FAI 57	1919 BP	COOK	71	21
STA	TO STA			
FED. AID DIST. NO.	ILLINOIS	PROJECT		



INSTALLATION NOTES

1. THE CONTRACTOR SHALL CONTACT ALL UNDER BRIDGE UTILITIES BEFORE STARTING ANY REMOVAL, RELOCATION AND INSTALLATION WORK.
2. ANY ELECTRICAL INSTALLATION WORK SHALL BE COORDINATED WITH OTHER INVOLVED AGENCIES.
3. COORDINATE THE POWER DISCONNECTION AND RECONNECTION TO EXISTING AND NEW LIGHTING FIXTURES WITH CITY OF CHICAGO, BUREAU OF ELECTRICITY.
4. PROVIDE EXPANSION CONDUIT FITTINGS FOR CONDUIT EMBEDDED IN STRUCTURE AT ALL STRUCTURAL EXPANSION JOINTS (REFER TO STRUCTURAL PLANS FOR EXACT JOINT LOCATION). THE COST OF EXPANSION CONDUIT FITTING SHALL BE INCLUDED IN THE COST OF CONDUIT INSTALLATION.
5. A PRECONSTRUCTION ELECTRICAL MAINTENANCE TRANSFER IS REQUIRED BEFORE ANY CONSTRUCTION BEGINS AS SPECIFIED. IT SHOULD BE NOTED THAT THE CONTRACTOR SHALL ASSUME MAINTENANCE OF ALL CIRCUITING SHOWN.

GENERAL NOTES

1. THE ELECTRICAL WORK SHALL BE PERFORMED IN ACCORDANCE WITH THE NATIONAL ELECTRIC CODE.
2. FOR SIZE AND NUMBER OF CONDUCTORS IN CONDUIT, REFER TO THE WIRING DIAGRAM.

REMOVAL AND RELOCATION NOTES

1. THE CONTRACTOR SHALL CONTACT IDOT AUTHORITIES AND COMMONWEALTH EDISON TO COORDINATE THE REMOVAL AND RELOCATION OF COMMONWEALTH EDISON DUCT SYSTEM.

STAGING NOTES

1. THE ELECTRICAL WORK SHALL BE PERFORMED PER STAGING PLANS AND TEMPORARY LIGHTING SHALL BE PROVIDED PER IDOT'S SPECIFICATIONS.

LEGEND

- C CONDUIT
- GND GROUND
- mm MILLIMETER
- V VOLT
- RGSC RIGID GALVANIZED STEEL CONDUIT
- TYP TYPICAL

City Lights, Ltd.
5261 West Harrison Street
Chicago, IL 60644
Phone: 773-626-9188

RECORD DRAWINGS

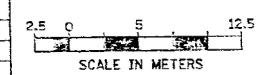
Date: 11-26-01
Initials: SC

E-3

INFORMATION ONLY

REVISIONS	
NAME	DATE
MHR	12/18/00

ILLINOIS DEPARTMENT OF TRANSPORTATION
FAI 57 (I-57) @ 123rd STREET
UNDERPASS UTILITIES & STAGING PLAN
DATE: 9/13/00
DRAWN BY: HLC
CHECKED BY: DL



DEI DELTA ENGINEERING, INC.
CONSULTING ENGINEERS, CHICAGO, ILLINOIS
270 SOUTH STATE ST., SUITE 300 CHICAGO, IL 60604-2001

MODEL: Default
FILE: 12/20/2022 11:00:00 AM
PROJECT: I:\Projects\123rd Street Underpass\123rd Street Underpass.dwg
USER: jacob.roth

USER NAME = Jacob.Roth	DESIGNED -	REVISED -
PLOT SCALE = 2,0000' / in.	DRAWN -	REVISED -
PLOT DATE = 12/20/2022	CHECKED -	REVISED -
	DATE -	REVISED -

**STATE OF ILLINOIS
DEPARTMENT OF TRANSPORTATION**

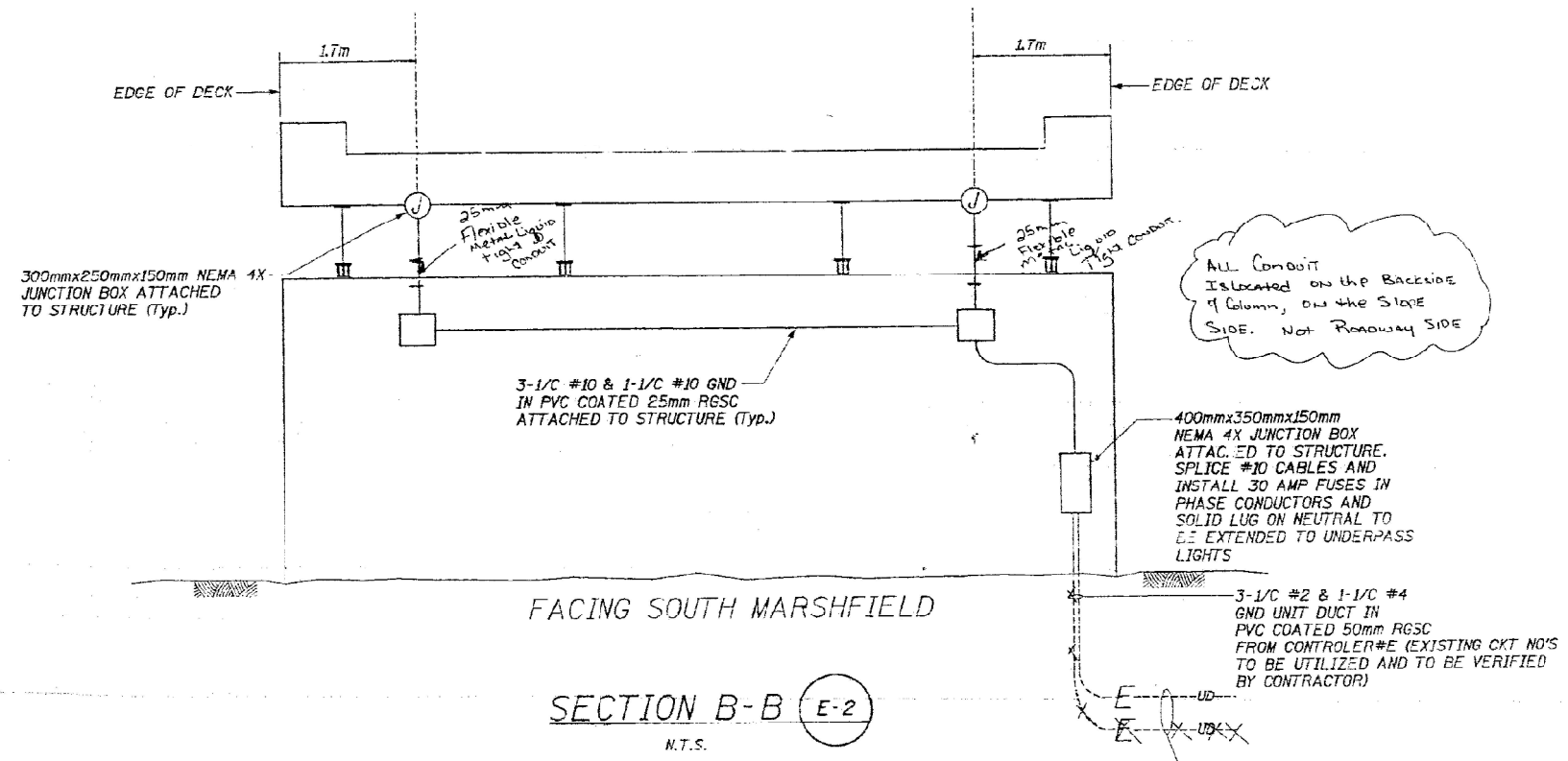
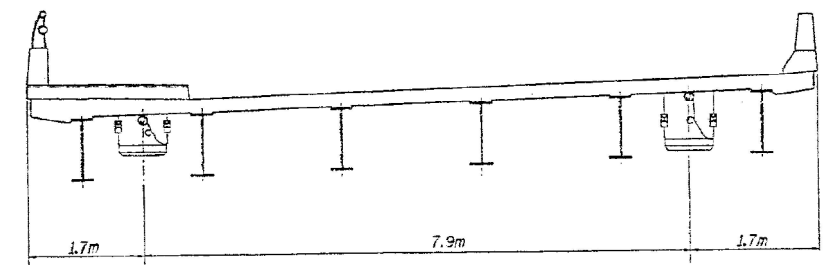
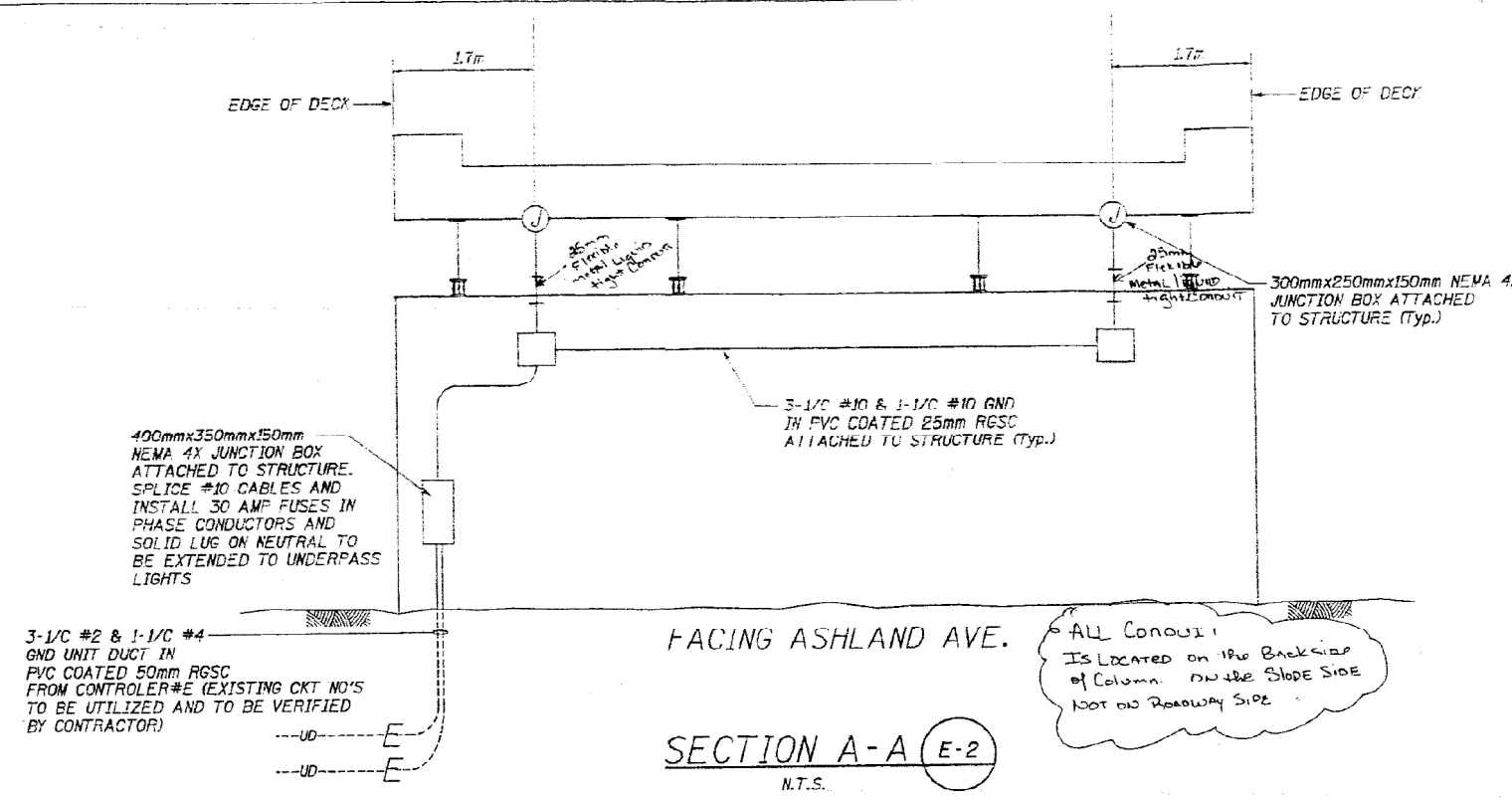
**INFORMATION ONLY
I-57 AT 123RD STREET**

SCALE: SHEET OF SHEETS STA. TO STA.

F.A.I. RTE.	SECTION	COUNTY	TOTAL SHEETS	SHEET NO.
57	FAI 0057 22 BJ	COOK	28	17
CONTRACT NO. 62T97				
ILLINOIS FED. AID PROJECT				

GENERAL NOTES

- ALL EXPOSED CONDUITS SHALL BE PVC COATED GALVANIZED RIGID STEEL.
- FINAL CONNECTION TO UNDERPASS LUMINAIRE SHALL BE WITH TIGHT FLEXIBLE METAL CONDUIT. SIZE OF JUNCTION BOX AT EACH LUMINAIRE LOCATION IS 150mmx150mmx100mm NEMA 4X ATTACHED TO STRUCTURE.
- ALL EQUIPMENT/ITEMS SHOWN IN THIS DRAWING ARE PROPOSED UNLESS NOTED OTHERWISE.
- ALL JUNCTION BOXES TO BE STAINLESS STEEL.



City Lights, Ltd.
5261 West Harrison Street
Chicago, IL 60644
Phone: 773-626-9162

RECORD DRAWINGS
Date: 11-20-01
Initials: J.C.

REVISIONS	
NAME	DATE
MHR	12/18/00

ILLINOIS DEPARTMENT OF TRANSPORTATION
FAI 57 (I-57) @ 123rd STREET
UNDERPASS SECTIONS & WIRING DETAILS

DATE: 9/13/00
DRAWN BY: HLC
CHECKED BY: DL

SCALE IN METERS
0 2.5 5 12.5

INFORMATION ONLY

STATE OF ILLINOIS
DEPARTMENT OF TRANSPORTATION

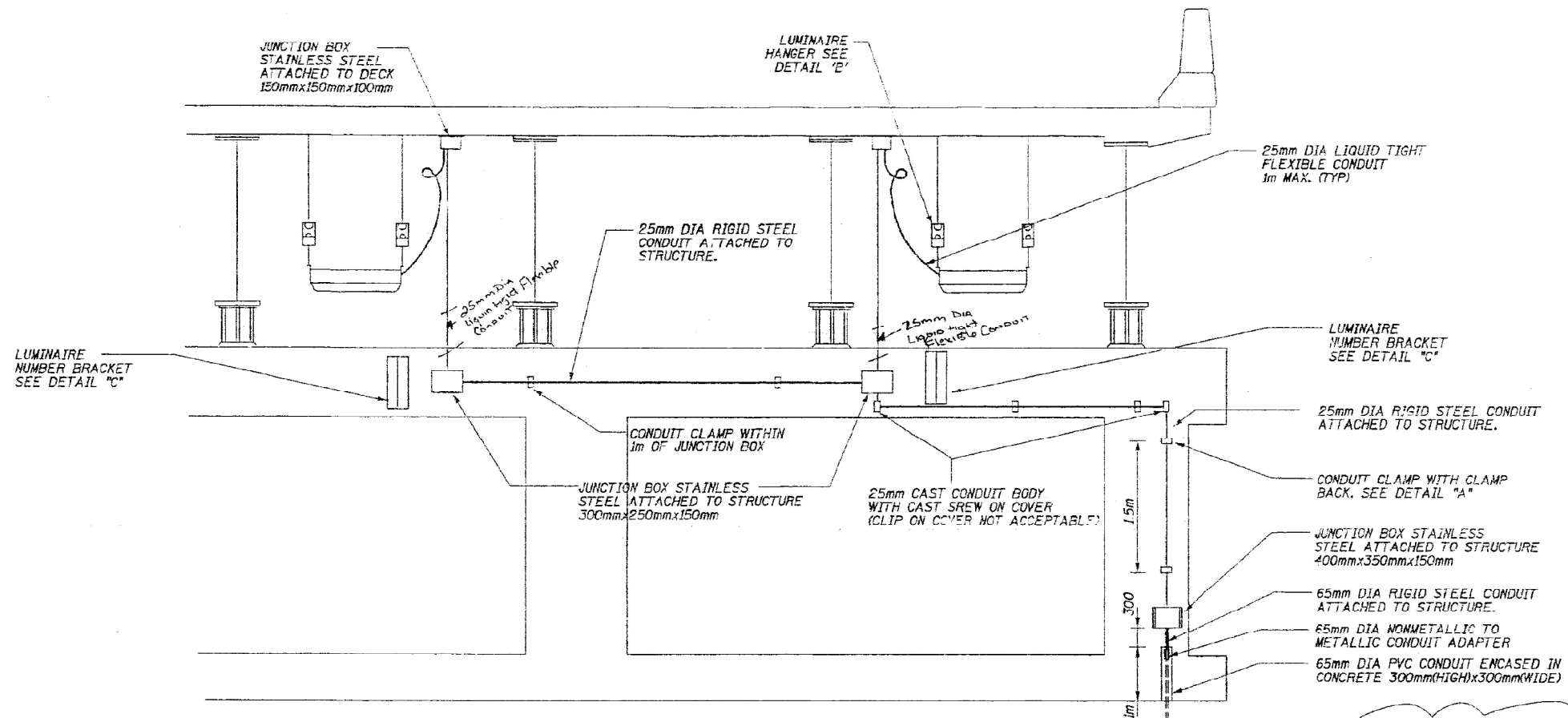
INFORMATION ONLY
I-57 AT 123RD STREET

USER NAME = Jacob.Roth	DESIGNED -	REVISED -
PLOT SCALE = 2,000' / in.	DRAWN -	REVISED -
PLOT DATE = 12/20/2022	CHECKED -	REVISED -
	DATE -	REVISED -

SCALE:	SHEET	OF	SHEETS	STA.	TO	STA.	ILLINOIS	FED. AID PROJECT
	57		FAI 0057 22 BJ				COOK	
								CONTRACT NO. 62T97

MODEL: Default
FILE NAME: p:\ultra\paw\bea\paw.com\PIV\DOT\Documents\DOT Office\Drawings\Project\1218167\22\CADD\DATA\Design\1218167-22-Sub-Details.dgn

ROUTE NO.	SECTION	COUNTY	SHEETS	NO.
FAI 57	1816.62	COOK	71	24
STA.	TO STA.			
FED. RD. DIST. NO. 7	ILLINOIS		PROJECT	



ALL Conduit on Columns are located on the Backside of Column NOT on Roadway Side

City Lights, Ltd.
5201 West Harrison Street
Chicago, IL 60644
Phone: 773 626 0162

RECORD DRAWINGS

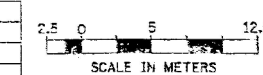
Date: 11-20-01
Initials: J.C.

- NOTES**
1. ALL DIMENSIONS ARE IN MILLIMETERS UNLESS OTHERWISE NOTED.
 2. ALL EXPOSED CONDUIT SHALL BE PVC COATED RGS.

INFORMATION ONLY

REVISIONS	
NAME	DATE
MFR	12/18/00

ILLINOIS DEPARTMENT OF TRANSPORTATION
FAI 57 (I-57) @ 123rd STREET
UNDERPASS LIGHTING DETAILS (TYP)



DATE: 9/13/00
DRAWN BY: HLC
CHECKED BY: DL

E-6

MODEL: Default FILE: hmlc_e-6.dwg PLOTDATE: 12/20/2022 11:21:02 AM PROJECT: I:\Projects\123rd Street\123rd Street.dwg

USER NAME = Jacob.Roth	DESIGNED -	REVISED -
PLOT SCALE = 2,000' / in.	DRAWN -	REVISED -
PLOT DATE = 12/20/2022	CHECKED -	REVISED -
	DATE -	REVISED -

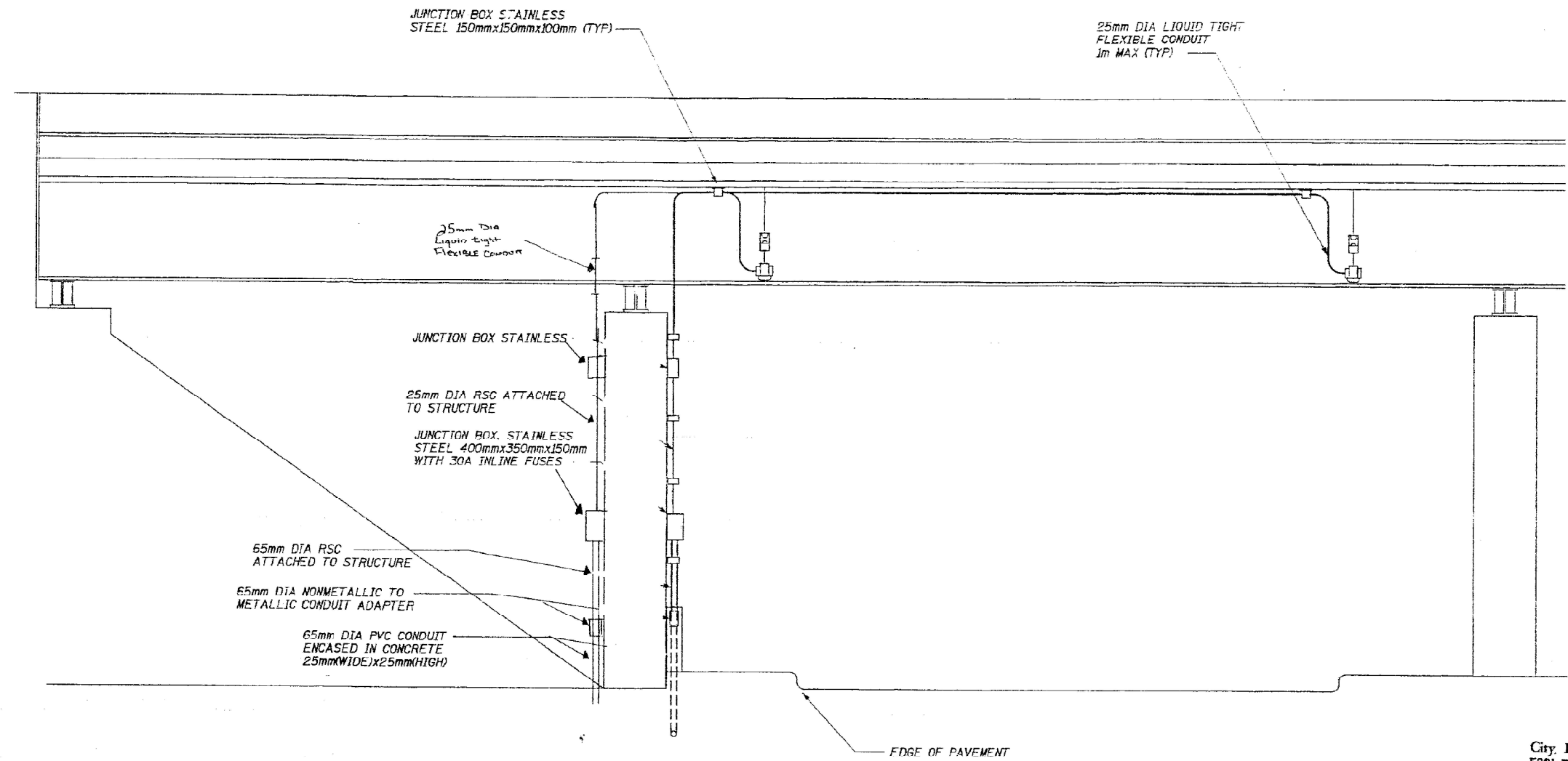
STATE OF ILLINOIS
DEPARTMENT OF TRANSPORTATION

INFORMATION ONLY
I-57 AT 123RD STREET

SCALE: SHEET OF SHEETS STA. TO STA.

F.A.I. RTE.	SECTION	COUNTY	TOTAL SHEETS	SHEET NO.
57	FAI 0057 22 BJ	COOK	28	20
CONTRACT NO. 62T97				
ILLINOIS FED. AID PROJECT				

ROUTE NO.	SECTION	COUNTY	TOTAL SHEETS	SHEET NO.
FAI 57	1818R	COOK	28	21
STA	TO STA			
FED. RD. DIST. NO.	FED. AID PROJ. NO.	PROJECT		

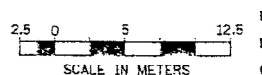


City Lights, Ltd.
 5281 West Harrison Street
 Chicago, IL 60644
 Phone: 773 626-9162
RECORD DRAWINGS
 Date: 11-20-01
 Initials: J.C.

INFORMATION ONLY

REVISIONS	
NAME	DATE
MIR	12/19/00

ILLINOIS DEPARTMENT OF TRANSPORTATION
 FAI 57 (I-57) @ 123RD STREET
 UNDERPASS LIGHTING DETAILS



DELTA ENGINEERING, INC.
 CONSULTING ENGINEERS, CHICAGO, ILLINOIS
 220 South State St., Suite 500, Chicago, IL 60604-2001

USER NAME = Jacob.Roth	DESIGNED -	REVISED -
PLOT SCALE = 2,000' / in.	DRAWN -	REVISED -
PLOT DATE = 12/20/2022	CHECKED -	REVISED -
	DATE -	REVISED -

**STATE OF ILLINOIS
 DEPARTMENT OF TRANSPORTATION**

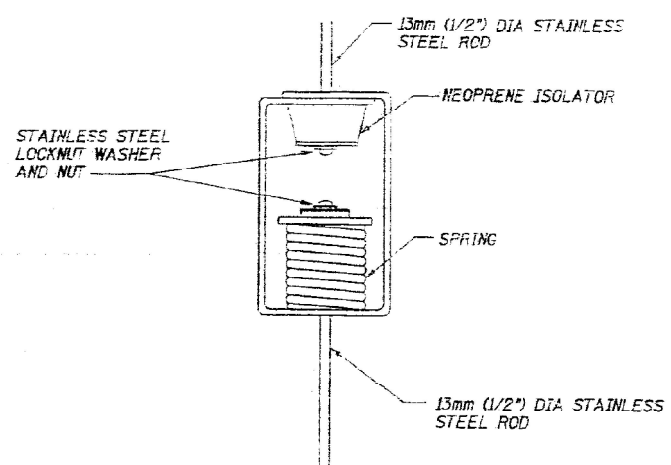
**INFORMATION ONLY
 I-57 AT 123RD STREET**

SCALE:	SHEET	OF	SHEETS	STA.	TO	STA.
--------	-------	----	--------	------	----	------

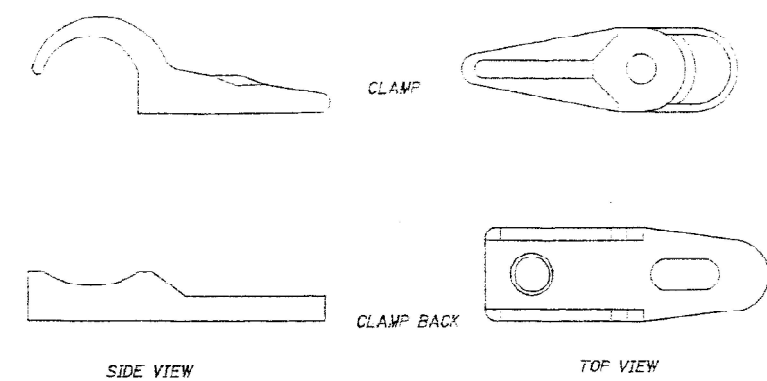
F.A.I. RTE.	SECTION	COUNTY	TOTAL SHEETS	SHEET NO.
57	FAI 0057 22 BJ	COOK	28	21
CONTRACT NO. 62T97				
ILLINOIS FED. AID PROJECT				

MODEL Path: \\p110101\pub\hld\sect\aw\be\del\com\PIV\DOT\Documents\DOT Office\Dir\rdet_11\Project\12126322\CADD\ata\Design\12126322-ah\details.dgn
 FILE NAME: \\p110101\pub\hld\sect\aw\be\del\com\PIV\DOT\Documents\DOT Office\Dir\rdet_11\Project\12126322\CADD\ata\Design\12126322-ah\details.dgn

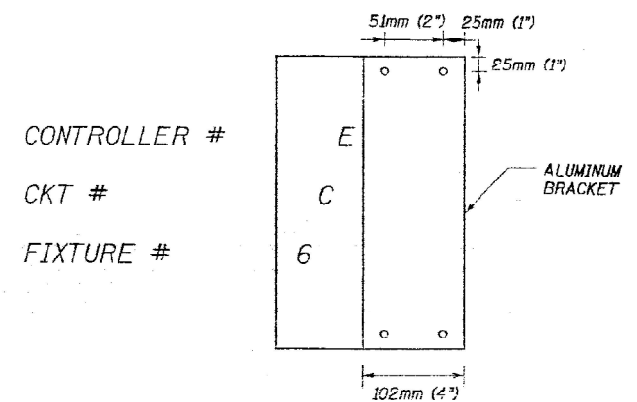
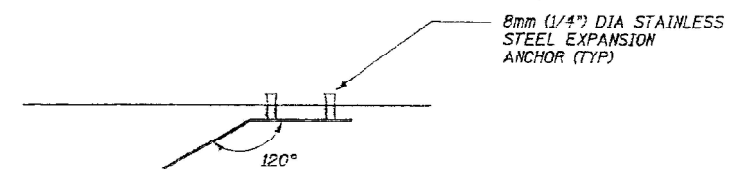
ROUTE NO. 1	SECTION	COUNTY	SHEETS	NO.
FAI 57	123RD ST	COOK	21	25
TO STA.		PROJECT		



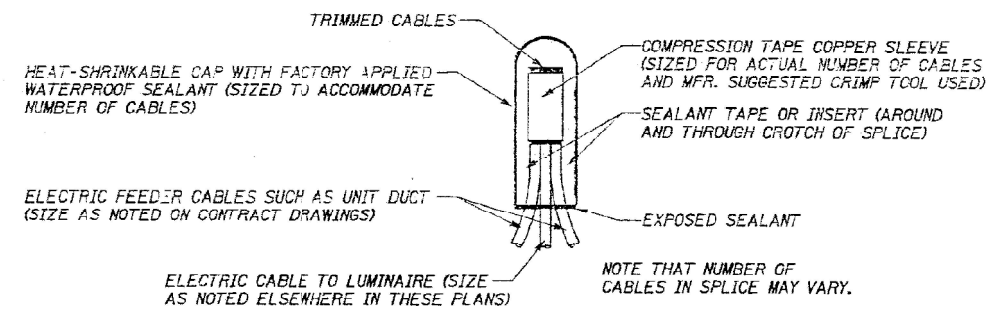
DETAIL B
LUMINAIRE HANGER ASSEMBLY



DETAIL A
CONDUIT CLAMP



DETAIL C (TYP)
LUMINAIRE NUMBERING DECAL BRACKET



SPLICING DETAIL
N.T.S.

City Lights, Ltd.
5261 West Harrison Street
Chicago, IL 60644
Phone: 773-628-9182
RECORD
DRAWINGS
Date: 11-20-01
Initials: J.C.

E-8

REVISIONS	
NAME	DATE
MHR	12/18/00

ILLINOIS DEPARTMENT OF TRANSPORTATION
FAI 57 (I-57) @ 123RD STREET
UNDERPASS LIGHTING DETAILS
DATE: 9/13/00
DRAWN BY: HLC
CHECKED BY: DL
SCALE IN METERS

DELTA ENGINEERING, INC.
CONSULTING ENGINEERS, CHICAGO ILLINOIS
225 South State St., Suite 509 Chicago, IL 60604-2001

INFORMATION ONLY

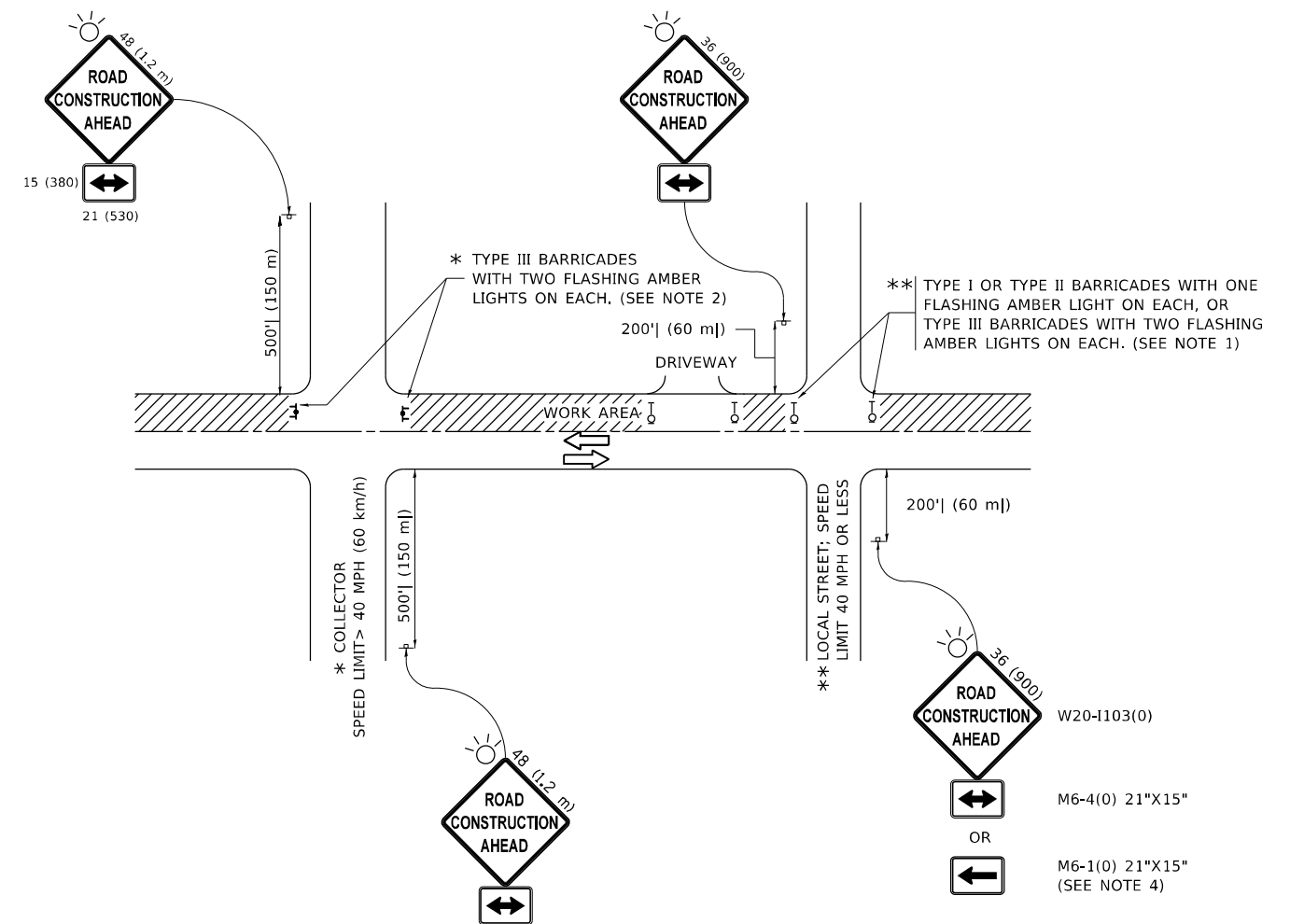
MODEL: Default
FILE: h:\mhc\p\11\123rd-st\123rd-st-123rd-st-123rd-st.dgn
PROJECT: 11-20-01
DATE: 12/20/2002

USER NAME = Jacob.Roth	DESIGNED -	REVISED -
PLOT SCALE = 2,000' / in.	DRAWN -	REVISED -
PLOT DATE = 12/20/2002	CHECKED -	REVISED -
	DATE -	REVISED -

STATE OF ILLINOIS
DEPARTMENT OF TRANSPORTATION

INFORMATION ONLY
I-57 AT 123RD STREET
SCALE: SHEET OF SHEETS STA. TO STA.

F.A.I. RTE.	SECTION	COUNTY	TOTAL SHEETS	SHEET NO.
57	FAI 0057 22 BJ	COOK	28	22
CONTRACT NO. 62T97				
ILLINOIS FED. AID PROJECT				



NOTES:

1. SIDE ROAD WITH A SPEED LIMIT OF 40 MPH (60 km/h) OR LESS AS SHOWN ON THE DRAWING AND AS DIRECTED BY THE ENGINEER:
 - a) ONE "ROAD CONSTRUCTION AHEAD" SIGN 36 x 36 (900x900) WITH A FLASHER MOUNTED ON IT APPROXIMATELY 200' (60 m) IN ADVANCE OF THE MAIN ROUTE.
 - b) THE CLOSED PORTION OF THE MAIN ROUTE SHALL BE PROTECTED BY BLOCKING WITH TYPE I, TYPE II OR TYPE III BARRICADES, 1/3 OF THE CROSS SECTION OF THE CLOSED PORTION.
2. SIDE ROAD WITH A SPEED LIMIT GREATER THAN 40 MPH (60 km/h) AS SHOWN ON THE DRAWING AND AS DIRECTED BY THE ENGINEER:
 - a) ONE "ROAD CONSTRUCTION AHEAD" SIGN 48 x 48 (1.2 m x 1.2 m) WITH A FLASHER MOUNTED ON IT APPROXIMATELY 500' (150 m) IN ADVANCE OF THE MAIN ROUTE.
 - b) BLOCKING WITH TYPE III BARRICADES, 1/2 OF THE CROSS SECTION OF THE CLOSED PORTION.
3. CONES MAY BE SUBSTITUTED FOR BARRICADES OR DRUMS AT HALF THE SPACING DURING DAY OPERATIONS. CONES SHALL BE A MINIMUM OF 28 (710) IN HEIGHT.
4. SIGNING AND THE WORK ZONE, A SINGLE HEADED ARROW (M6-1) SHALL BE USED IN LIEU OF THE DOUBLE HEADED ARROW (M6-4).
5. WHEN WORK IS BEING PERFORMED ON A SIDE ROAD OR DRIVEWAY, FOLLOW THE APPLICABLE STANDARD(S). THE DIRECTIONAL ARROW (M6-1 OR M6-4) SHALL BE COVERED OR REMOVED WHEN NO LONGER CONSISTENT WITH THE TRAFFIC CONTROL SET-UP.
6. ADVANCE WARNING SIGNS ARE TO BE OMITTED ON DRIVEWAYS UNLESS OTHERWISE SPECIFIED IN THE PLANS OR BY THE ENGINEER.
7. THE TRAFFIC CONTROL AND PROTECTION FOR SIDE ROADS, INTERSECTIONS, AND DRIVEWAYS SHALL BE INCLUDED IN THE COST OF SPECIFIED TRAFFIC CONTROL STANDARDS OR ITEMS.

All dimensions are in inches (millimeters) unless otherwise shown.

MODEL: Default
 FILE NAME: p:\bullet\sect-pw-beach\paw.com\FW\DOT\Documents\DOT Office\Dir\rdet_1\Project\10176322\CADD\DATA\Design\BATS\Std.dgn

USER NAME = Jacob.Roth	DESIGNED - L.H.A.	REVISED - A. HOUSEH 10-15-96
PLOT SCALE = 100,0000' / in.	CHECKED -	REVISED - T. RAMMACHER 01-06-00
PLOT DATE = 12/20/2022	DATE - 06-89	REVISED - A. SCHUETZE 07-01-13
		REVISED - A. SCHUETZE 09-15-16

**STATE OF ILLINOIS
DEPARTMENT OF TRANSPORTATION**

**TRAFFIC CONTROL AND PROTECTION FOR
SIDE ROADS, INTERSECTIONS, AND DRIVEWAYS**

SCALE: NONE SHEET 1 OF 1 SHEETS STA. TO STA.

F.A.I. RTE.	SECTION	COUNTY	TOTAL SHEETS	SHEET NO.
57	FAI 0057 22 BJ	COOK	28	23
TC-10			CONTRACT NO. 62T97	
ILLINOIS FED. AID PROJECT				

MODEL: Default
 FILE NAME: p:\bulletect-pw-bead\paw.com\PIV\DOT\Documents\DOT Office\Drawings\11\project\1126322\Cadd\data\Design\BdF5Ed.dgn

ROUTE MARKERS

FOR U.S. ROUTES
M1-40-2424

FOR ILLINOIS ROUTES
M1-50-2424

R.R. UNMARKED ROUTES
SPECIAL 24" x 18" VARIABLE
4" BLACK LETTERS ON WHITE
REFLECTIVE BACKGROUND

ARROWS SIGNS

M5-1L-2115

M5-1R-2115

M6-1-2115

M6-2-2115

M6-3-2115

CARDINAL DIRECTION & DETOUR SIGNS

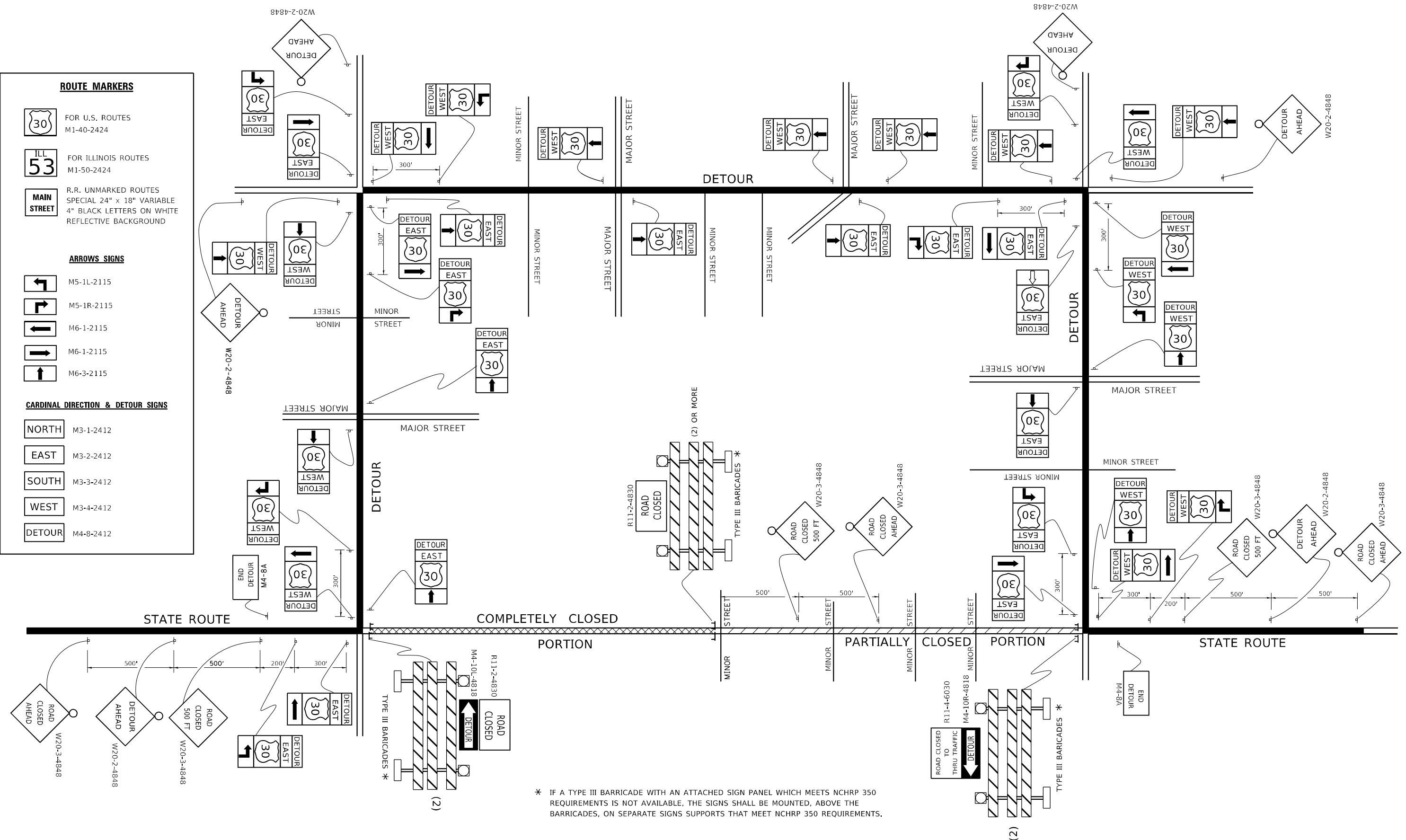
NORTH M3-1-2412

EAST M3-2-2412

SOUTH M3-3-2412

WEST M3-4-2412

DETOUR M4-8-2412



* IF A TYPE III BARRICADE WITH AN ATTACHED SIGN PANEL WHICH MEETS NCHRP 350 REQUIREMENTS IS NOT AVAILABLE, THE SIGNS SHALL BE MOUNTED, ABOVE THE BARRICADES, ON SEPARATE SIGNS SUPPORTS THAT MEET NCHRP 350 REQUIREMENTS.

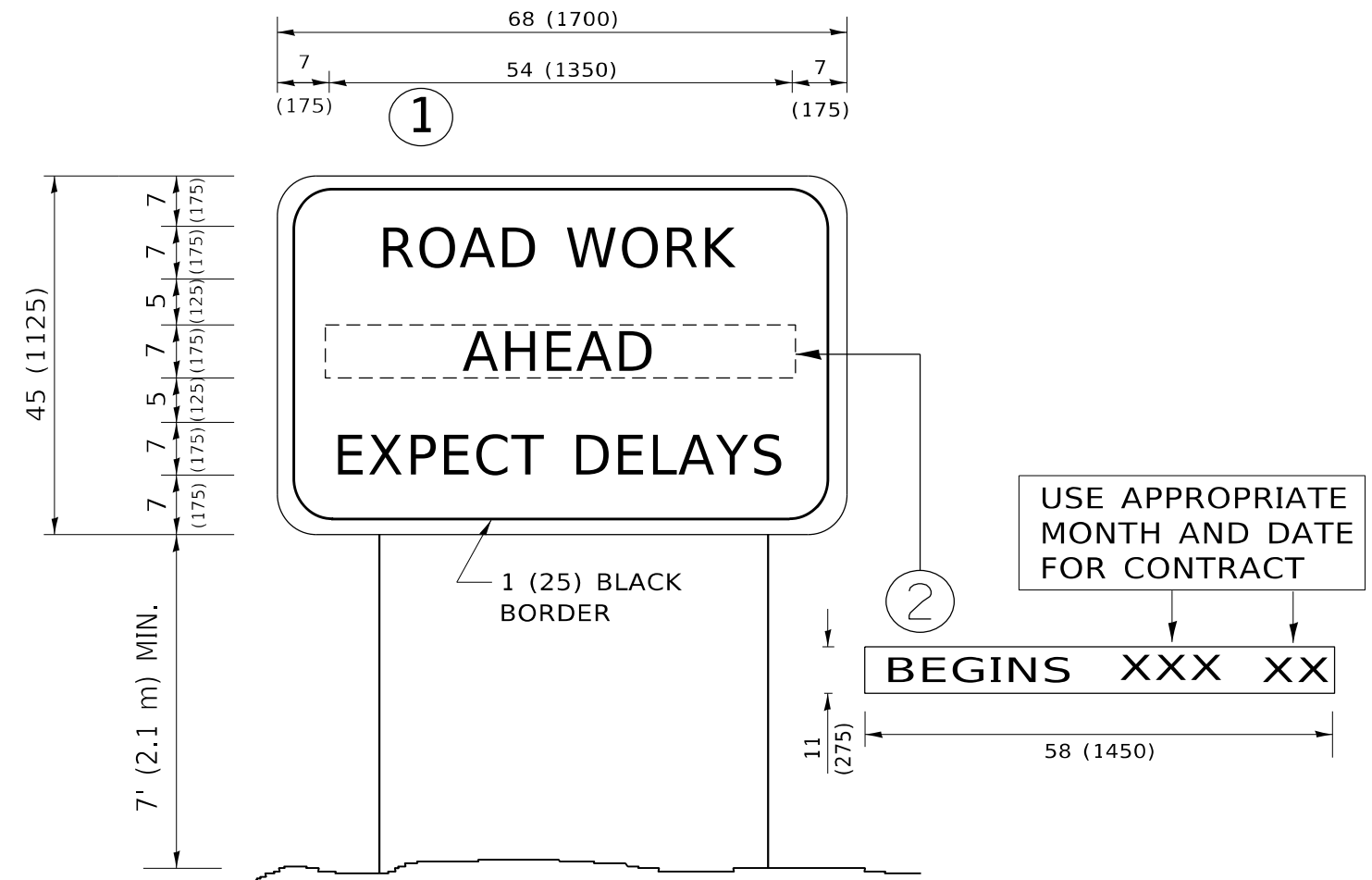
USER NAME = Jacob,Roth	DESIGNED -	REVISED - 10-18-02
	DRAWN -	REVISED - R, BORO 09-14-09
PLOT SCALE = 100,0000' / in.	CHECKED -	REVISED -
PLOT DATE = 12/20/2022	DATE -	REVISED -

**STATE OF ILLINOIS
 DEPARTMENT OF TRANSPORTATION**

**DETOUR SIGNING
 FOR CLOSING STATE HIGHWAYS**

SCALE: NONE SHEET 1 OF 1 SHEETS STA. TO STA.

F.A.I. RTE. 57	SECTION FAI 0057 22 BJ	COUNTY COOK	TOTAL SHEETS 28	SHEET NO. 24
TC-21		CONTRACT NO. 62T97		
ILLINOIS FED. AID PROJECT				



NOTES:

1. USE BLACK LETTERING ON ORANGE BACKGROUND.
2. ERECT SIGNS IN ADVANCE OF THE LOCATION FOR THE "ROAD CONSTRUCTION AHEAD" SIGN AT LOCATIONS AS DIRECTED BY THE ENGINEER.
3. ERECT SIGN ① WITH INSTALLED PANEL ② ONE WEEK PRIOR TO THE START OF CONSTRUCTION.
4. REMOVE PANEL ② SOON AFTER THE START OF CONSTRUCTION.
5. SEE SPECIAL PROVISION FOR "TEMPORARY INFORMATION SIGNING" FOR ADDITIONAL INFORMATION.
6. ONE SIGN ASSEMBLY EQUALS 25.70 SQ. FT. (2.3 SQ. M.)
7. SHALL BE PAID FOR AS TEMPORARY INFORMATION SIGNING.

ALL DIMENSIONS ARE IN INCHES (MILLIMETERS) UNLESS OTHERWISE SHOWN.

MODEL: Default
 FILE: \\nafe-pw-bentley.com\PW\DOT\Documents\DOT Office\Dir\drt_1\Project\12126322\CADD\data\Design\BtES.dgn

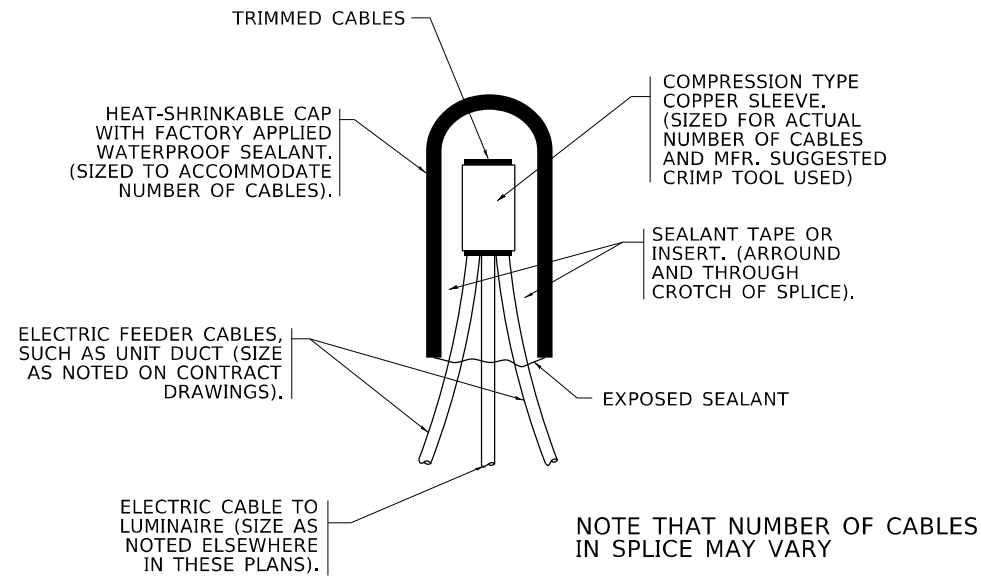
USER NAME = Jacob.Roth	DESIGNED -	REVISED - R. MIRS 09-15-97
	DRAWN -	REVISED - R. MIRS 12-11-97
PLOT SCALE = 100,0001 ' / in.	CHECKED -	REVISED - T. RAMMACHER 02-02-99
PLOT DATE = 12/20/2022	DATE -	REVISED - C. JUCIUS 01-31-07

**STATE OF ILLINOIS
DEPARTMENT OF TRANSPORTATION**

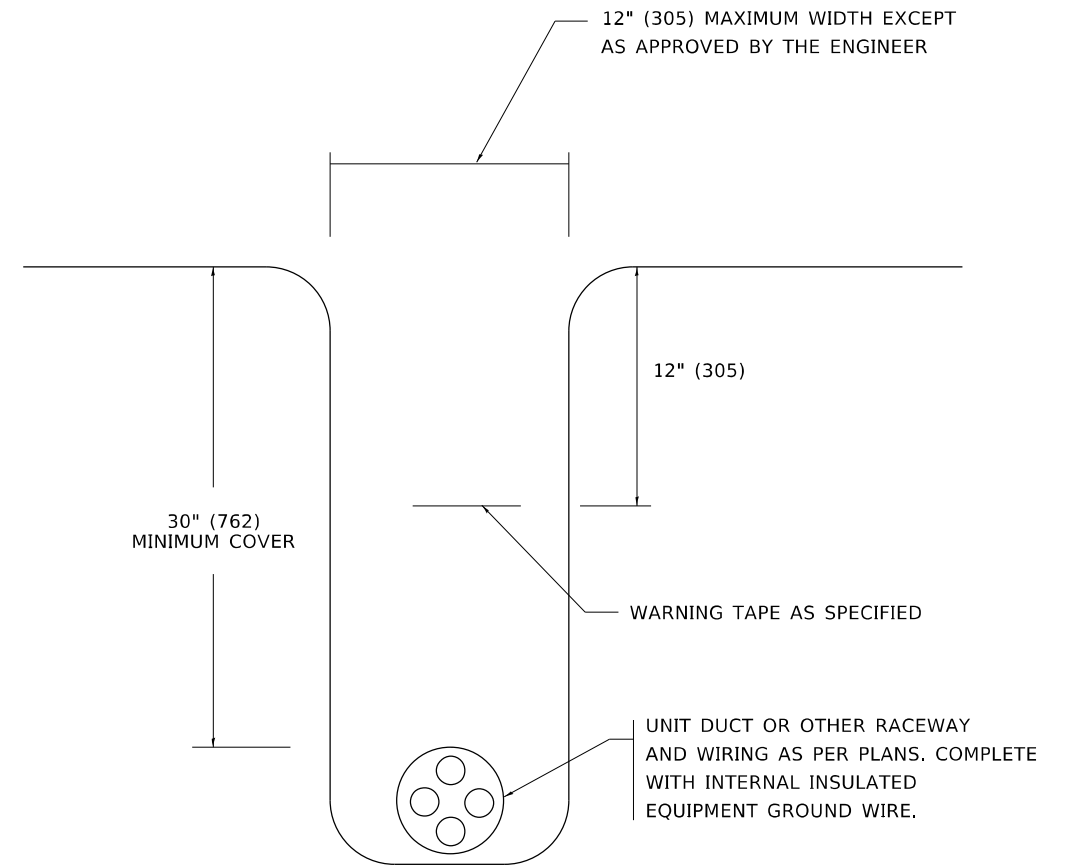
**ARTERIAL ROAD
INFORMATION SIGN**

SCALE: NONE SHEET 1 OF 1 SHEETS STA. TO STA.

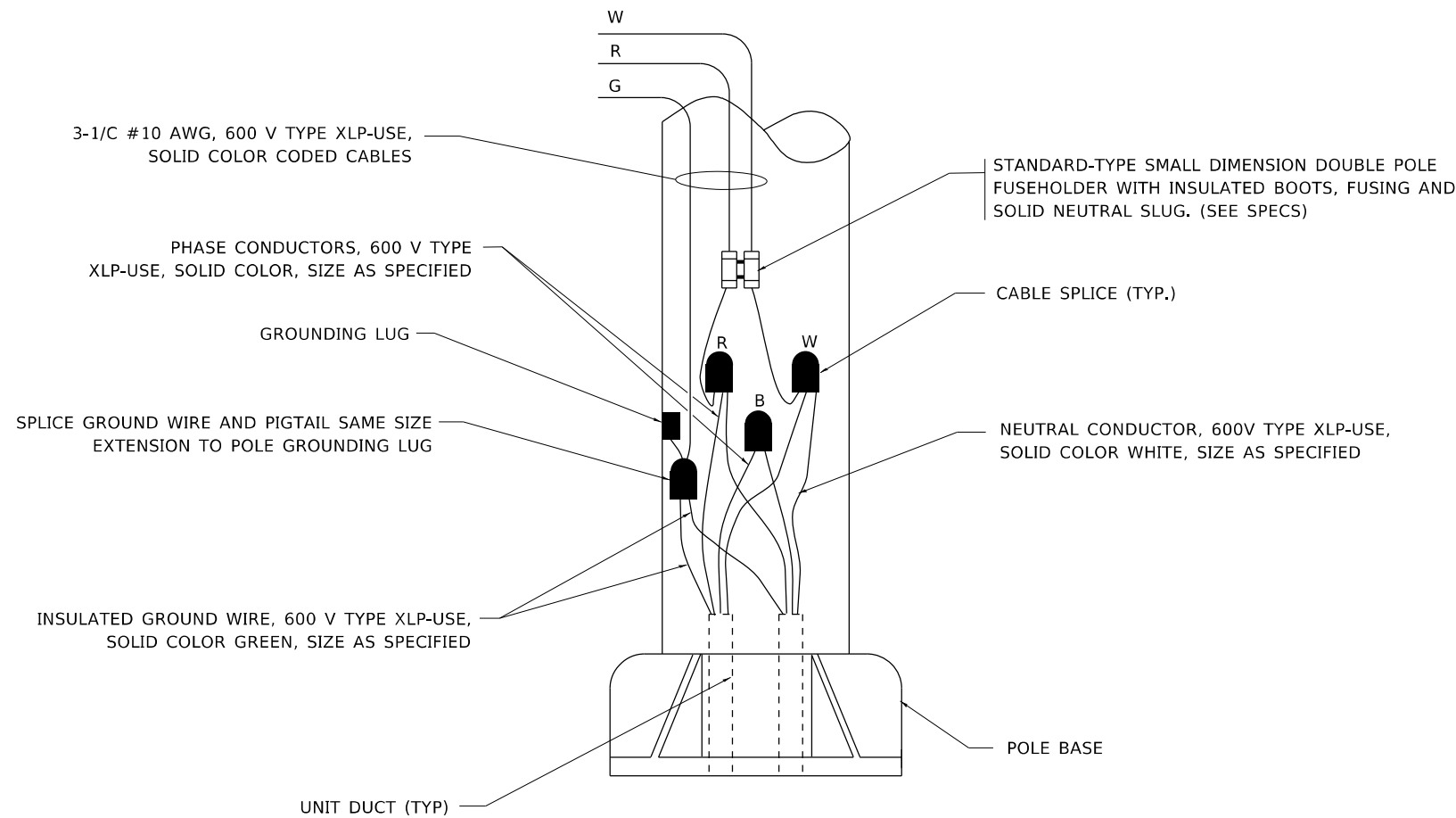
F.A.I. RTE.	SECTION	COUNTY	TOTAL SHEETS	SHEET NO.
57	FAI 0057 22 BJ	COOK	28	25
TC-22		CONTRACT NO. 62T97		
ILLINOIS FED. AID PROJECT				



TYPICAL SPLICE DETAIL
N.T.S.



TYPICAL WIRING IN TRENCH DETAIL
N.T.S.



POLE WIRING DETAIL
N.T.S.

MODEL: Default
 FILE NAME: \\sldt-cw-beadley.com\P\W\DOT\Documents\DOT Office\Dir\rdet_1\Project\1D126322\CADD\data\Design\BdfStc.dgn

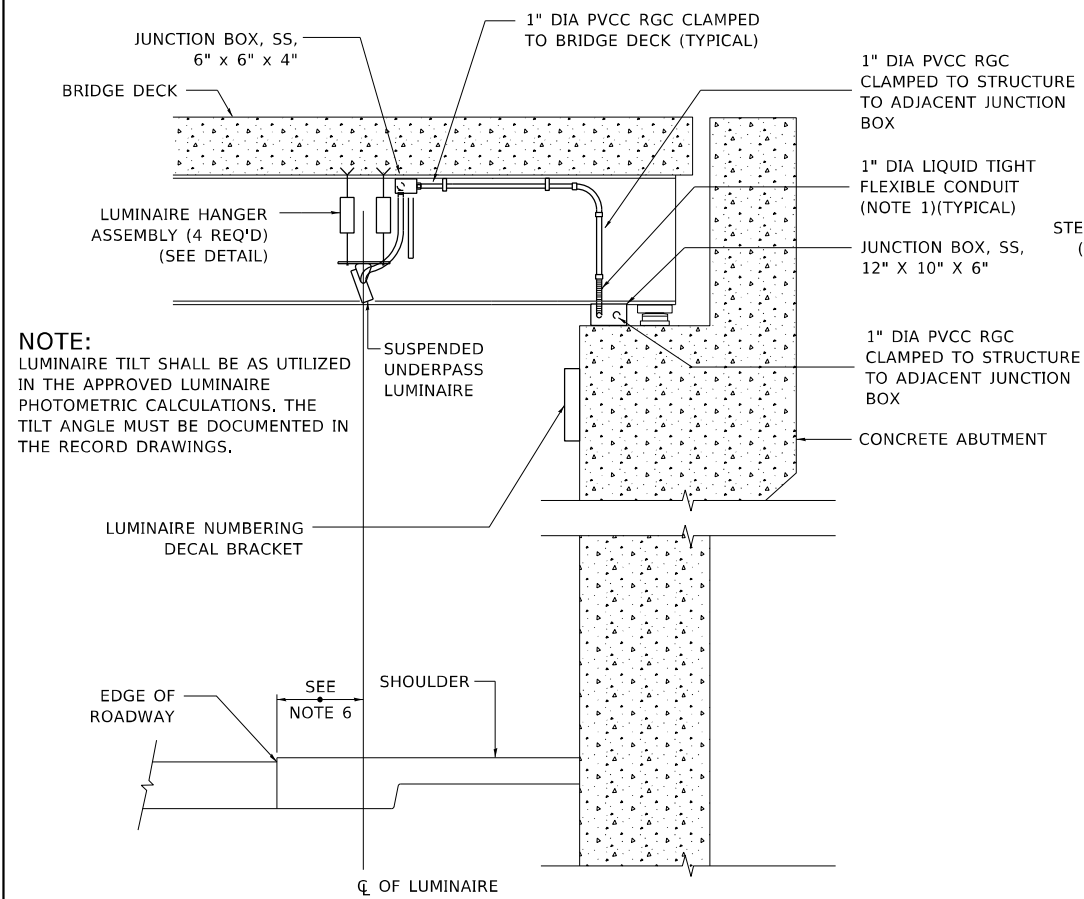
USER NAME = Jacob.Roth	DESIGNED -	REVISED - 02/04/2020
PLOT SCALE = 100,0000' / in.	DRAWN -	REVISED -
PLOT DATE = 12/20/2022	CHECKED -	REVISED -
	DATE - 08/08/2003	REVISED -

STATE OF ILLINOIS
DEPARTMENT OF TRANSPORTATION

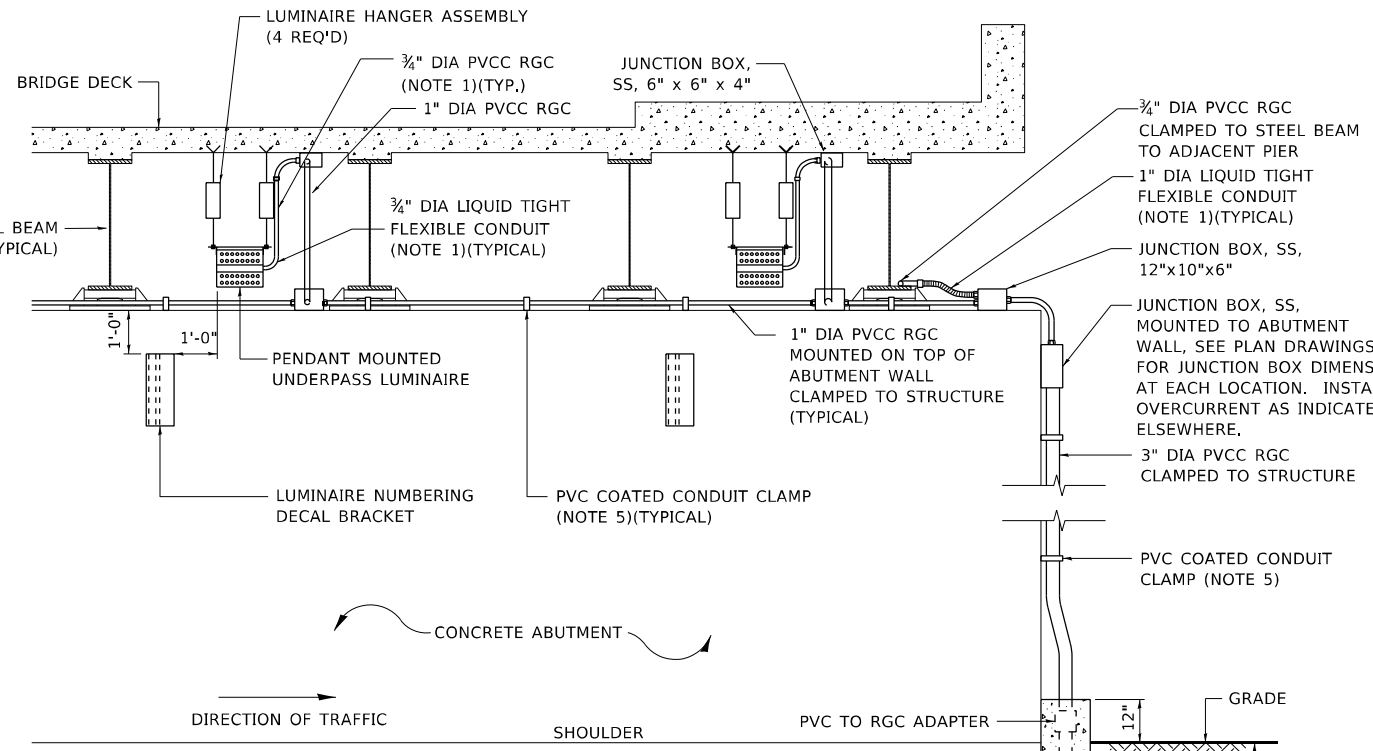
MISC. ELECTRICAL DETAILS
SHEET A

SCALE: NONE SHEET 1 OF 1 SHEETS STA. TO STA.

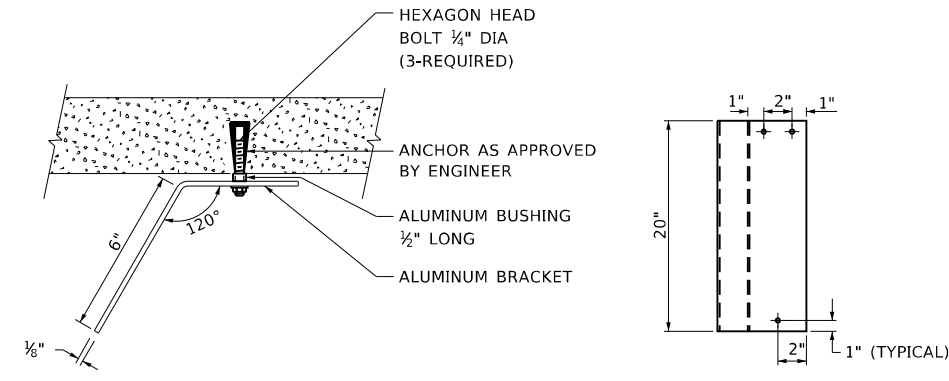
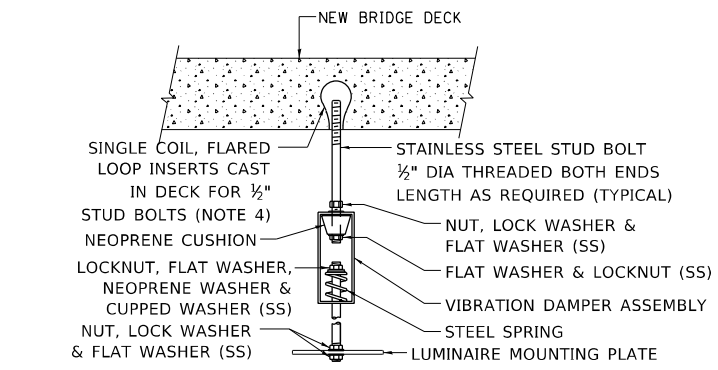
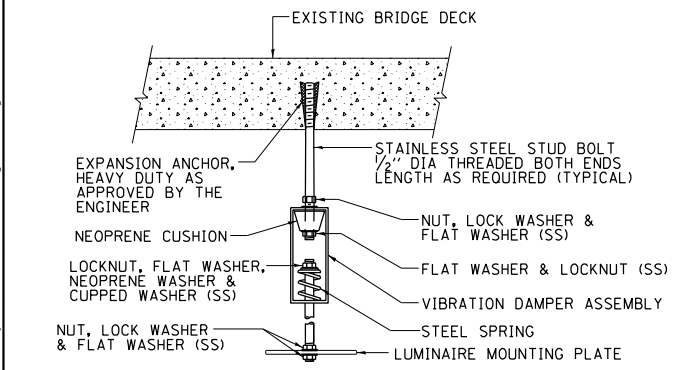
F.A.I. RTE.	SECTION	COUNTY	TOTAL SHEETS	SHEET NO.
57	FAI 0057 22 BJ	COOK	28	26
BE-702		CONTRACT NO. 62T97		
ILLINOIS FED. AID PROJECT				



NOTE:
LUMINAIRE TILT SHALL BE AS UTILIZED IN THE APPROVED LUMINAIRE PHOTOMETRIC CALCULATIONS. THE TILT ANGLE MUST BE DOCUMENTED IN THE RECORD DRAWINGS.



- NOTES:**
- LIQUID TIGHT FLEXIBLE METAL CONDUIT, MAXIMUM LENGTH 6'-0", TYPICAL FOR EACH INSTANCE AS SHOWN, PROVIDE PVC COATED RIGID GALVANIZED STEEL CONDUIT AS REQUIRED NOT TO EXCEED 6'-0" OF FLEXIBLE LIQUID TIGHT METAL CONDUIT. LIQUID TIGHT FLEXIBLE METAL CONDUIT WILL BE INCLUDED IN THE COST OF THE CONDUIT ATTACHED TO STRUCTURE, OF THE CORRESPONDING DIA., GALVANIZED STEEL, PVC COATED PAY ITEM EXCEPT THAT " DIA. CONDUIT AND " DIA. FLEXIBLE CONDUIT SHALL BE INCLUDED IN THE COST OF UNDERPASS LUMINAIRE INSTALLATION.
 - SEE UNDERPASS LIGHTING PLANS FOR INSTALLATION LOCATION OF UNDERPASS LIGHTING LUMINAIRES.
 - THE CONTRACTOR SHALL USE APPROVED SINGLE COIL FLARED LOOP INSERTS WHEN SUSPENDED MOUNTING AN UNDERPASS LUMINAIRE TO A NEW BRIDGE DECK. THE FLARED LOOP INSERTS MUST BE CAST INTO THE CONCRETE DECK. THE CONTRACTOR IS RESPONSIBLE FOR LOCATING AND COORDINATING THE INSERT LOCATIONS FOR MOUNTING THE UNDERPASS LIGHTING SYSTEM AS SHOWN ON THE PLANS WITH THE BRIDGE DECK CONTRACTOR. SEE DETAIL.
 - THE UNDERPASS LUMINAIRE HANGER ASSEMBLY COMPLETE WITH HEAVY DUTY ANCHORS/INSERTS AND ALL APPLICABLE HARDWARE SHALL BE INCLUDED IN THE COST OF THE UNDERPASS LUMINAIRE PAY ITEM.
 - SECURE THE CONDUIT WITH PVC COATED CONDUIT CLAMPS OR CONDUIT BEAM CLAMPS AS SHOWN AT 5'-0" INTERVALS FOR LATERALS AND WITHIN 2'-0" MAXIMUM FROM ANY JUNCTION BOX, FLEXIBLE CONDUIT, OR CHANGE IN DIRECTION. ALL PVC COATED CONDUIT CLAMPS OR BEAM CLAMPS SHALL BE INCLUDED WITH THE COST OF THE "CONDUIT ATTACHED TO STRUCTURE, OF THE CORRESPONDING DIA., GALVANIZED STEEL, PVC COATED" PAY ITEM.
 - ALL UNDERPASS LUMINAIRES MUST BE CENTERED IN THE BEAM SPACE AS INDICATED ON THE PLANS UNLESS OTHERWISE DIRECTED BY THE ENGR. LUMINAIRE SETBACK SHALL BE AS INDICATED IN PLANS FOR EACH SPECIFIC UNDERPASS
 - THE CONCRETE ENCASED CONDUIT TRANSITION SHALL BE INCLUDED IN THE COST OF THE GALVANIZED RIGID STEEL CONDUIT PAY ITEMS.
 - ALL CONDUIT ATTACHED TO STRUCTURE SHALL BE PVC COATED RIGID STEEL CONDUIT (PVCC RGC) TYPICAL.
 - IN NO INSTANCE SHALL ANY UNDERPASS LUMINAIRE OR ANY OTHER ELECTRICAL EQUIPMENT BE INSTALLED BELOW THE ELEVATION OF THE BOTTOM OF THE BRIDGE BEAM WHEN OVER ANY PAVEMENT (ROADWAY OR SHOULDER).



EXISTING BRIDGE DECK INSTALLATION

NEW BRIDGE DECK INSTALLATION

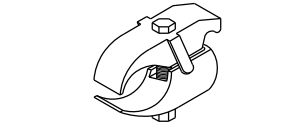
TOP VIEW

ELEVATION

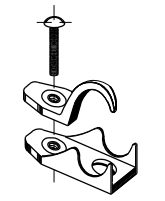
TYPICAL LUMINAIRE HANGER ASSEMBLY DETAILS

LUMINAIRE NUMBERING DECAL BRACKET

NOT TO SCALE



PVC COATED CONDUIT BEAM CLAMP
NOT TO SCALE



PVC COATED CONDUIT CLAMP
NOT TO SCALE

MODEL: Default
FILE NAME: p:\project-new\bea\paw.com\FW\DOT\Documents\1\DOT Office\Dir\drct_11\project\1\176322\CADD\DATA\Design\DRF5.dgn

USER NAME = Jacob.Roth	DESIGNED -	REVISED - 12-12-05
	DRAWN -	REVISED -
PLOT SCALE = 100,0000' / in.	CHECKED -	REVISED -
PLOT DATE = 12/20/2022	DATE -	REVISED -

**STATE OF ILLINOIS
DEPARTMENT OF TRANSPORTATION**

**SUSPENDED MOUNT LED UNDERPASS
LUMINAIRE INSTALLATION DETAILS**

SCALE: NONE SHEET 1 OF 1 SHEETS STA. TO STA.

F.A.I. RTE.	SECTION	COUNTY	TOTAL SHEETS	SHEET NO.
57	FAI 0057 22 BJ	COOK	28	28
BE-901		CONTRACT NO. 62T97		
ILLINOIS FED. AID PROJECT				