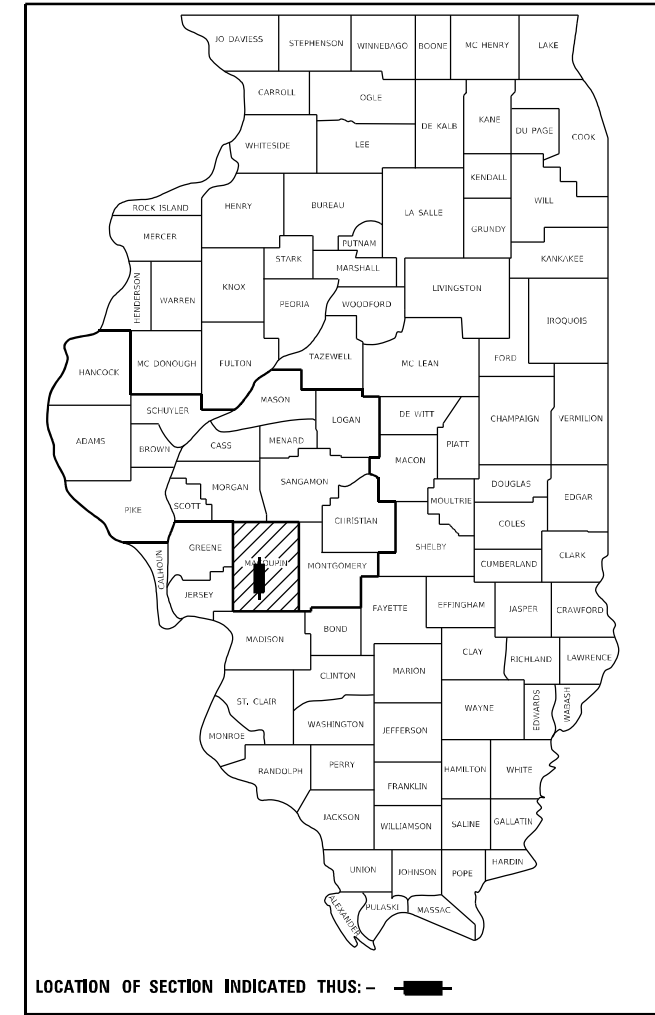


STATE OF ILLINOIS
DEPARTMENT OF TRANSPORTATION

F.A.P. RTE.	SECTION	COUNTY	TOTAL SHEETS	SHEET NO.
662	(E)RS1, (F)RS4-BDR, (67)RS3	MACOUPIN	40	1
		ILLINOIS	CONTRACT NO. 72H41	

D-96-014-15



LOCATION OF SECTION INDICATED THUS: - [black rectangle] -

FOR INDEX OF SHEETS, SEE SHEET NO. 2

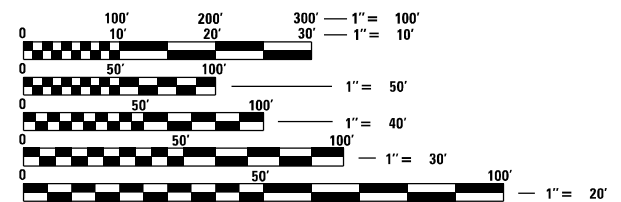
HIGHWAY CLASSIFICATION

F.A.P. ROUTE 662 (IL 4)
(fr. ALLEN RD to HAIG RD N of CARLINVILLE)
CLASSIFICATION: MINOR ARTERIAL (NON-URBAN)

ADT: 3,496 (2021) PV = 93.2%
DESIGN SPEED: 60 MPH SU = 3.4%
POSTED SPEED: 55 MPH MU = 3.4%

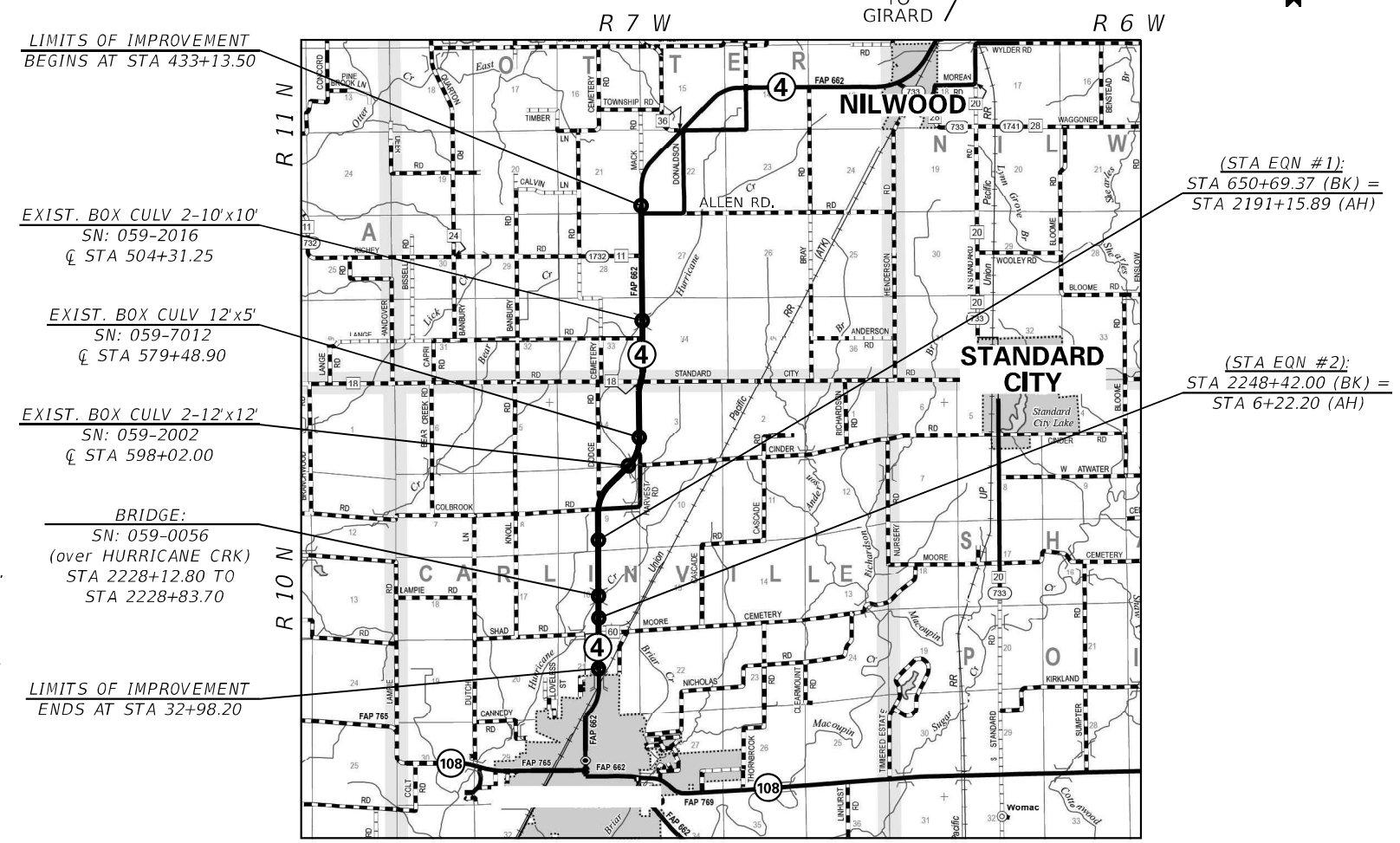
**PROPOSED
HIGHWAY PLANS**

**FAP ROUTE 662 (IL 4)
SECTION (E)RS1, (F)RS4-BDR, (67)RS3
PROJECT NHPP-A80A(568)
DESIGN OVERLAY & DRAINAGE
MACOUPIN COUNTY
C-96-014-15**



FULL SIZE PLANS HAVE BEEN PREPARED USING STANDARD ENGINEERING SCALES, REDUCED SIZED PLANS WILL NOT CONFORM TO STANDARD SCALES. IN MAKING MEASUREMENTS ON REDUCED PLANS, THE ABOVE SCALES MAY BE USED.

J.U.L.I.E.
JOINT UTILITY LOCATION INFORMATION FOR EXCAVATORS
1-800-892-0123
OR 811



PROJECT ENGINEER: BRIAN LANINGHAM (217) 782-6990
TEAM ENGINEER: RENE CABRERA (217) 557-9062
CONTRACT NO. 72H41

GROSS LENGTH = 30,157.98 FT. = 5.71 MI
NET LENGTH = 29,917.08 FT. = 5.67 MI

STATE OF ILLINOIS
DEPARTMENT OF TRANSPORTATION

SUBMITTED December 20, 2022

[Signature] REGIONAL ENGINEER

February 3, 2023

[Signature] ENGINEER OF DESIGN AND ENVIRONMENT

February 3, 2023

[Signature] DIRECTOR OF HIGHWAYS PROJECT IMPLEMENTATION

**PRINTED BY THE AUTHORITY
OF THE STATE OF ILLINOIS**

CODE NO.	ITEM	UNIT	TOTAL QUANTITY	6-01059-0000	6-01059-0050
				80% FEDERAL 20% STATE	80% FEDERAL 20% STATE
				ROADWAY 0005	BRIDGE 0059
				RURAL	SN 059-0056
20800150	TRENCH BACKFILL	CU YD	43	43	
21400100	GRADING AND SHAPING DITCHES	FOOT	293	293	
35800100	PREPARATION OF BASE	SQ YD	164	164	
40200800	AGGREGATE SURFACE COURSE, TYPE B	TON	23	23	
40600290	BITUMINOUS MATERIALS (TACK COAT)	POUND	72,250	72,250	
40600370	LONGITUDINAL JOINT SEALANT	FOOT	30,027	30,027	
40600982	HOT-MIX ASPHALT SURFACE REMOVAL - BUTT JOINT	SQ YD	2,444	2,444	
40600985	PORTLAND CEMENT CONCRETE SURFACE REMOVAL - BUTT JOINT	SQ YD	110	110	
40600990	TEMPORARY RAMP	SQ YD	208	208	
40603080	HOT-MIX ASPHALT BINDER COURSE, 1L-19.0, N50	TON	9,618	9,618	
40604050	HOT-MIX ASPHALT SURFACE COURSE, 1L-9.5, MIX "C", N50	TON	6,423	6,423	
40800050	INCIDENTAL HOT-MIX ASPHALT SURFACING	TON	472	472	
44000155	HOT-MIX ASPHALT SURFACE REMOVAL, 1 1/2"	SQ YD	104,333	104,333	
44000400	GUTTER REMOVAL	FOOT	258	258	

MODEL: Default
 FILE NAME: p:\ultra-cw-bentley.com\p1\DOT\Documents\DOT Office\Dir\dir_6\Project\0672H41\CAD\DATA\CAD\Sheet\0672H41.rpt-S00.dgn

USER NAME = Rene.Cabrera	DESIGNED - RSC	REVISED -
	DRAWN - RSC	REVISED -
PLOT SCALE = 100,0000 ' / in.	CHECKED -	REVISED -
PLOT DATE = 12/20/2022	DATE -	REVISED -

**STATE OF ILLINOIS
DEPARTMENT OF TRANSPORTATION**

SUMMARY OF QUANTITIES

SCALE: NTS SHEET 1 OF 5 SHEETS STA. TO STA.

F.A.P. RTE.	SECTION	COUNTY	TOTAL SHEETS	SHEET NO.
662	(E)RS1, (F)RS4-BDR, (67)RS3	MACOUPIN	40	3
CONTRACT NO. 72H41				
ILLINOIS FED. AID PROJECT				

CODE NO.	ITEM	UNIT	TOTAL QUANTITY	6-01059-0000	6-01059-0050
				80% FEDERAL 20% STATE	80% FEDERAL 20% STATE
				ROADWAY	BRIDGE
				0005	0059
				RURAL	SN 059-0056
44201789	CLASS D PATCHES, TYPE II, 12 INCH	SQ YD	126	126	
44201794	CLASS D PATCHES, TYPE III, 12 INCH	SQ YD	78	78	
44201796	CLASS D PATCHES, TYPE IV, 12 INCH	SQ YD	160	160	
48102100	AGGREGATE WEDGE SHOULDER, TYPE B	TON	1,751	1,751	
48203023	HOT-MIX ASPHALT SHOULDERS, 6 1/2"	SQ YD	86	86	
48203100	HOT-MIX ASPHALT SHOULDERS	TON	5,794	5,794	
50105220	PIPE CULVERT REMOVAL	FOOT	100	100	
50300260	BRIDGE DECK GROOVING	SQ YD	506		506
50300300	PROTECTIVE COAT	SQ YD	524		524
542D0253	PIPE CULVERTS, CLASS D, TYPE 1 48"	FOOT	38	38	
542D5497	PIPE CULVERTS, CLASS D, TYPE 1 EQUIVALENT ROUND-SIZE 42"	FOOT	74	74	
54390230	INSERTION CULVERT LINER 36"	FOOT	48	48	
60600095	CLASS S1 CONCRETE (OUTLET)	CU YD	4	4	
60602800	CONCRETE GUTTER, TYPE B	FOOT	222	222	

REV. - MS

MODEL: D:\default
 FILE: Macfile.pw\illinois\benley.com\pwwd\DOT\Documents\DOT_Offices\District_8\Project\0572H41\CAD\data\CAD\sheet\0572H41_rpt-S00.dgn

USER NAME = Rene.Cabrera	DESIGNED - RSC	REVISED -	STATE OF ILLINOIS DEPARTMENT OF TRANSPORTATION	SUMMARY OF QUANTITIES			F.A.P. RTE.	SECTION	COUNTY	TOTAL SHEETS	SHEET NO.
DRAWN - RSC	CHECKED -	REVISED -		662	(E)R51, (F)R54-BDR, (67)R53	MACOUPIN	40	4			
PLOT SCALE = 100.0000' / in.	DATE -	REVISED -		SCALE: NTS	SHEET 2 OF 5 SHEETS	STA. TO STA.	CONTRACT NO. 72H41				
PLOT DATE = 12/20/2022	DATE -	REVISED -		ILLINOIS FED. AID PROJECT							

CODE NO.	ITEM	UNIT	TOTAL QUANTITY	6-01059-0000	6-01059-0050
				80% FEDERAL 20% STATE	80% FEDERAL 20% STATE
				ROADWAY	BRIDGE
				0005	0059
				RURAL	SN 059-0056
* 63000001	STEEL PLATE BEAM GUARDRAIL, TYPE A, 6 FOOT POSTS	FOOT	275	275	
* 63100045	TRAFFIC BARRIER TERMINAL, TYPE 2	EACH	1	1	
* 63100085	TRAFFIC BARRIER TERMINAL, TYPE 6	EACH	4	4	
* 63100167	TRAFFIC BARRIER TERMINAL, TYPE 1 (SPECIAL) TANGENT	EACH	3	3	
63200310	GUARDRAIL REMOVAL	FOOT	589	589	
64200108	SHOULDER RUMBLE STRIPS, 8 INCH	FOOT	57,094	57,094	
67100100	MOBILIZATION	L SUM	1	0.9	0.1
67000400	ENGINEER'S FIELD OFFICE, TYPE A	CAL MO	6	5	1
70100100	TRAFFIC CONTROL AND PROTECTION, STANDARD 701316	EACH	1		1
70100450	TRAFFIC CONTROL AND PROTECTION, STANDARD 701201	L SUM	1	1	
70100460	TRAFFIC CONTROL AND PROTECTION, STANDARD 701306	L SUM	1	1	
70100500	TRAFFIC CONTROL AND PROTECTION, STANDARD 701326	L SUM	1	1	
70100600	TRAFFIC CONTROL AND PROTECTION, STANDARD 701336	L SUM	1	1	
70102620	TRAFFIC CONTROL AND PROTECTION, STANDARD 701501	L SUM	1	1	
70106500	TEMPORARY BRIDGE TRAFFIC SIGNALS	EACH	1		1
70106700	TEMPORARY RUMBLE STRIPS	EACH	6		6

* SPECIALTY ITEM

REV. - MS

MODEL: D:\default
 FILE: Macfile.pw\illinois\benetley.com\pwwd\DOT\Documents\DOT_Offices\District_8\Project\05072411\CAD\data\CAD\sheet\05072411_sht-500.dgn

USER NAME = Rene.Cabrera	DESIGNED - RSC	REVISED -
	DRAWN - RSC	REVISED -
PLOT SCALE = 100.0000' / in.	CHECKED -	REVISED -
PLOT DATE = 12/19/2022	DATE -	REVISED -

**STATE OF ILLINOIS
DEPARTMENT OF TRANSPORTATION**

SUMMARY OF QUANTITIES

SCALE: NTS SHEET 3 OF 5 SHEETS STA. TO STA.

F.A.P. RTE.	SECTION	COUNTY	TOTAL SHEETS	SHEET NO.
662	(E)R51, (F)R54-BDR, (67)R53	MACOUPIN	40	5
			CONTRACT NO. 72H41	
ILLINOIS FED. AID PROJECT				

CODE NO.	ITEM	UNIT	TOTAL QUANTITY	6-01059-0000	6-01059-0050
				80% FEDERAL 20% STATE	80% FEDERAL 20% STATE
				ROADWAY 0005	BRIDGE 0059
				RURAL	SN 059-0056
70107025	CHANGEABLE MESSAGE SIGN	CAL DA	30	30	
70300100	SHORT TERM PAVEMENT MARKING	FOOT	12,251	12,251	
70300150	SHORT TERM PAVEMENT MARKING REMOVAL	SQ FT	1,021	1,021	
70300231	TEMPORARY PAVEMENT MARKING - LINE 5" - PAINT	FOOT	72,389	72,389	
70300281	TEMPORARY PAVEMENT MARKING - LINE 24" - PAINT	FOOT	27	27	
* 72501000	TERMINAL MARKER - DIRECT APPLIED	EACH	3	3	
* 78009005	MODIFIED URETHANE PAVEMENT MARKING - LINE 5"	FOOT	72,389	72,389	
* 78009024	MODIFIED URETHANE PAVEMENT MARKING - LINE 24"	FOOT	27	27	
* 78100100	RAISED REFLECTIVE PAVEMENT MARKER	EACH	380	380	
* 78200005	GUARDRAIL REFLECTORS, TYPE A	EACH	12	12	
78300200	RAISED REFLECTIVE PAVEMENT MARKER REMOVAL	EACH	380	380	
78300201	PAVEMENT MARKING REMOVAL - GRINDING	SQ FT	109		109
78300202	PAVEMENT MARKING REMOVAL - WATER BLASTING	SQ FT	178		178
Z0012130	BRIDGE DECK SCARIFICATION 3/4"	SQ YD	524		524

* SPECIALTY ITEM

MODEL: Default
FILE: MacInte_Pw\illinois\paw\benfrey.com\pww\DOT\Documents\DOT_Offices\Dirctc_8\Project\05072411\CAD\data\CAD\sheet\05072411_sht-500.dgn

USER NAME = Rene.Cabrera	DESIGNED - RSC	REVISED -
	DRAWN - RSC	REVISED -
PLOT SCALE = 100.0000' / in.	CHECKED -	REVISED -
PLOT DATE = 12/19/2022	DATE -	REVISED -

**STATE OF ILLINOIS
DEPARTMENT OF TRANSPORTATION**

SUMMARY OF QUANTITIES

SCALE: NTS SHEET 4 OF 5 SHEETS STA. TO STA.

F.A.P. RTE.	SECTION	COUNTY	TOTAL SHEETS	SHEET NO.
662	(E)RS1, (F)RS4-BDR, (67)RS3	MACOUPIN	40	6
CONTRACT NO. 72H41			ILLINOIS FED. AID PROJECT	

CODE NO.	ITEM	UNIT	TOTAL QUANTITY	6-01059-0000	6-01059-0050
				80% FEDERAL 20% STATE	80% FEDERAL 20% STATE
				ROADWAY 0005	BRIDGE 0059
				RURAL	SN 059-0056
Z0012164	BRIDGE DECK MICROSILICA CONCRETE OVERLAY 2 1/2"	SQ YD	524		524
Z0016001	DECK SLAB REPAIR (FULL DEPTH, TYPE I)	SQ YD	15		15
Z0034105	MATERIAL TRANSFER DEVICE	TON	6,423	6,423	
Z0041895	POLYMER CONCRETE	CU FT	4		4
X2020060	EXCAVATING AND GRADING EXISTING SHOULDER, (SPECIAL)	UNIT	2	2	
X4406060	PARTIAL DEPTH REMOVAL, TYPE I, 6"	SQ YD	7	7	
X4406260	PARTIAL DEPTH REMOVAL, TYPE II, 6"	SQ YD	978	978	
X4406460	PARTIAL DEPTH REMOVAL, TYPE III, 6"	SQ YD	420	420	
X4406660	PARTIAL DEPTH REMOVAL, TYPE IV, 6"	SQ YD	446	446	
X4421000	PARTIAL DEPTH PATCHING	TON	622	622	
* X6330725	STEEL PLATE BEAM GUARDRAIL (SHORT RADIUS)	FOOT	29	29	
X7200201	WIDTH RESTRICTION SIGNING	L SUM	1		1
∅ Z0076600	TRAINEES	HOUR	2000	2000	
∅ Z0076604	TRAINEES TRAINING PROGRAM GRADUATE	HOUR	2000	2000	

* SPECIALTY ITEM ∅ 0042

REV. - MS

MODEL: D:\default
 FILE: M:\mhc\p\illinois\benley.com\p\illinois\benley.com\p\illinois\DOT_Offices\District_8\Project\0567241\CAD\data\CAD\sheet\0567241_rpt-500.dgn

USER NAME = Rene.Cabrera	DESIGNED - RSC	REVISED -	STATE OF ILLINOIS DEPARTMENT OF TRANSPORTATION	SUMMARY OF QUANTITIES			F.A.P. RTE.	SECTION	COUNTY	TOTAL SHEETS	SHEET NO.
DRAWN - RSC	REVISOR -	REVISIONS -		662	(E)R51, (F)R54-BDR, (67)R53	MACOUPIN	40	7			
PLOT SCALE = 100.0000' / in.	CHECKED -	REVISOR -		SCALE: NTS			SHEET 5 OF 5 SHEETS			STA.	TO STA.
PLOT DATE = 12/20/2022	DATE -	REVISIONS -		ILLINOIS FED. AID PROJECT							

TEMPORARY RAMP

LOCATION (STA TO STA)	LENGTH (FOOT)	PAVT WIDTH (FOOT)	(40600990)
			QUANTITY (SQ YD)
[F.A.P. 662 (IL 4)]			
(After Microsilica Overlay):			
2227+76.97 TO 2227+82.80	5.83	36	23.32
(BRIDGE OVERLAY):			
(SN: 059-0056) over HURRICANE CRK 2228+12.80 TO 2228+83.70			
2229+13.70 TO 2229+19.53	5.83	36	23.32
(After Milling):			
433+13.50 TO 433+18.50	5	30	16.67
(STA EQN #1):			
650+69.37 (BK) = 2191+15.89 (AH)			
2227+71.97 TO 2227+82.80	10.83	36	43.32
(BRIDGE OVERLAY):			
(SN: 059-0056) over HURRICANE CRK 2228+12.80 TO 2228+83.70			
2229+13.70 TO 2229+24.53	10.83	36	43.32
(STA EQN #2):			
2248+42.00 (BK) = 6+22.20 (AH)			
32+93.20 TO 32+98.20	5	32	17.78
(After HMA Bind Cse):			
2227+77.80 TO 2227+82.80	5	36	20.00
(BRIDGE OVERLAY):			
(SN: 059-0056) over HURRICANE CRK 2228+12.80 TO 2228+83.70			
2229+13.70 TO 2229+18.70	5	36	20.00
(6-01059-0000) PROJECT TOTAL			208

SHORT-TERM PAVEMENT MARKING

TYP. SEC. #	LOCATION (STA TO STA)	LENGTH (FOOT)	(70300100)
			QUANTITY (FOOT)
[F.A.P. 662 (IL 4)]			
(Centerline Marking):			
(1-14)	433+13.50 TO 650+69.37	21,755.87	2,175.59
(STA EQN #1):			
650+69.37 (BK) = 2191+15.89 (AH)			
(15-19)	2191+15.89 TO 2227+82.80	3,666.91	366.69
(BRIDGE OVERLAY):			
(SN: 059-0056) over HURRICANE CRK 2228+12.80 TO 2228+83.70			
(20-22)	2229+13.70 TO 2248+42.00	1,928.30	192.83
(STA EQN #2):			
2248+42.00 (BK) = 6+22.20 (AH)			
(23-24)	6+22.20 TO 32+98.20	2,676.00	267.60
(Edge Line Marking): (200' sp/shldr)			
(4-6)	502+45.00 TO 506+10.80 LT	365.80	
	W = 10' (4)(2)(1)		8.0
(6-7)	506+10.80 TO 506+49.10 RT	38.30	
	W = 10' (4)(1)(1)		4.0
(STA EQN #1):			
650+69.37 (BK) = 2191+15.89 (AH)			
(18-19)	2223+50.00 TO 2227+82.80	432.80	
	W = 6' (4)(3)(2)		24.0
(BRIDGE OVERLAY):			
(SN: 059-0056) over HURRICANE CRK 2228+12.80 TO 2228+83.70			
(20-21)	2229+13.70 TO 2233+26.40 RT	412.70	12.0
	W = 6' (4)(3)(1)		
(20-21)	2229+13.70 TO 2233+64.70 LT	451.00	12.0
	W = 6' (4)(3)(1)		
Subtotal (Milling) =			3,062.71
Subtotal (Lev Bind) =			3,062.71
Subtotal (HMA Surf) =			3,062.71
Subtotal (4th Application) =			3,062.71
(6-01059-0000) PROJECT TOTAL			12,251

MILLING SCHEDULE

TYP. SEC. #	LOCATION (STA TO STA)	LENGTH (FOOT)	WIDTH (FOOT)	(44000155)	(40600982)
				HMA SURF REMOVAL 1 1/2" (SQ YD)	HMA SURF REMOVAL BUTT JT (SQ YD)
[F.A.P. 662 (IL 4)]					
(1-3)	433+13.50 TO 502+16.30	6,902.80	30	23,009.33	
(3)	502+16.30 TO 502+45.00	28.70	40	127.56	
(4-6)	502+45.00 TO 506+10.80	365.80	50	2,032.22	
(7)	506+10.80 TO 506+49.10	38.30	40	170.22	
(4-13)	506+49.10 TO 636+36.21	12,987.11	30	43,290.37	
(14)	636+36.21 TO 650+69.37	1,433.16	34	5,414.16	
(STA EQN #1):					
650+69.37 (BK) = 2191+15.89 (AH)					
(15)	2191+15.89 TO 2194+28.30	312.41	34	1,180.22	
(16)	2194+28.30 TO 2221+56.90	2,728.60	32	9,701.69	
(17)	2221+56.90 TO 2223+50.00	193.10	28	600.76	
(18-19)	2223+50.00 TO 2227+82.80	432.80	36	1,731.20	
(BRIDGE OVERLAY):					
SN: 059-0056 (over HURRICANE CRK) 2228+12.80 TO 2228+83.70					
(20-21)	2229+13.70 TO 2233+26.40	412.70	36	1,650.80	
(21)	2233+26.40 TO 2233+64.70	38.30	34	144.69	
(22)	2233+64.70 TO 2248+42.00	1,477.30	32	5,252.62	
(STA EQN #2):					
2248+42.00 (BK) = 6+22.20 (AH)					
(23)	6+22.20 TO 9+94.30	372.10	32	1,323.02	
(24)	9+94.30 TO 32+98.20	2,303.90	34	8,703.62	
INCIDENTAL HMA SURFACING					
HMA ENTR					958.74
SIDE RDS					1,484.96
(6-01059-0000) PROJECT TOTAL				104,333	2,444

MODEL: Default
 FILE: M:\MFC_Plan\Project-raw-beat-fwy.com\FWIDOT\Documents\DOT Office\Dir\Dir: E:\Project\0672\41\CAD\Drawings\0672\41\41-pts-sched.dwg

USER NAME = Rene.Cabrera	DESIGNED - RSC	REVISED -
DRAWN - RSC	REVISED -	
PLOT SCALE = 100,0000' / in.	CHECKED -	REVISED -
PLOT DATE = 12/20/2022	DATE -	REVISED -

**STATE OF ILLINOIS
DEPARTMENT OF TRANSPORTATION**

SCHEDULE OF QUANTITIES

SCALE: NTS SHEET 1 OF 6 SHEETS STA. TO STA.

F.A.P. RTE.	SECTION	COUNTY	TOTAL SHEETS	SHEET NO.
662	(E)RS1, (F)RS4-BDR, (67)RS3	MACOUPIN	40	8
CONTRACT NO. 72H41				
ILLINOIS FED. AID PROJECT				

PIPE CULVERT REMOVAL

TYP. SEC. #	LOCATION	(50105220)	
		QUANTITY	
		(FOOT)	
[F.A.P. 662 (IL 4)]			
(10)	555+85.10 TO 556+17.10 RT	32.0	
(10)	568+13.90 TO 568+47.90 RT	34.0	
(11)	579+07.60 TO 579+41.70 RT	34.10	
(6-01059-0000) PROJECT TOTAL		100	

**PIPE CULVERTS, CLASS D, TYPE 1
EQUIVALENT ROUND-SIZE 42"**

TYP. SEC. #	LOCATION	(542D5497)	
		QUANTITY	
		(FOOT)	
[F.A.P. 662 (IL 4)]			
(10)	555+83.10 TO 556+19.10 RT	36.0	
(10)	568+11.90 TO 568+49.90 RT	38.0	
(6-01059-0000) PROJECT TOTAL		74	

PIPE CULVERTS, CLASS D, TYPE 1 48"

TYP. SEC. #	LOCATION	(542D0253)	
		QUANTITY	
		(FOOT)	
[F.A.P. 662 (IL 4)]			
(11)	579+05.60 TO 579+43.70 RT	38.10	
(6-01059-0000) PROJECT TOTAL		38	

GRADING AND SHAPING DITCHES

TYP. SEC. #	LOCATION	(21400100)	
		QUANTITY	
		(FEET)	
[F.A.P. 662 (IL 4)]			
(1)	436+20.60 TO 436+70.60 RT	50.0	
(1)	435+53.50 TO 436+70.60 RT	117.10	
(10)	555+58.10 TO 555+83.10 RT	25.0	
(10)	556+19.10 TO 556+44.10 RT	25.0	
(10)	567+86.90 TO 568+11.90 RT	25.0	
(10)	568+49.90 TO 568+74.90 RT	25.0	
(10)	578+80.60 TO 579+05.60 RT	25.0	
(6-01059-0000) PROJECT TOTAL		293	

INCIDENTAL BITUMINOUS SURFACING & AGGREGATE SURFACE COURSE, TYPE B

DESCRIPTION	STATION	EXIST. TYPE	fr. E.O.P. (FOOT)	WIDTH (FOOT)	THICKNESS (INCH)	ENTR.				SIDE RD.		(40800050)	(40200800)		
						Exist. AGG		Exist. BIT		AREA (SQ FT)	TOTAL (TON)	AREA (SQ FT)	TOTAL (TON)	INCIDENTAL HMA SURF (TON)	AGG SURF CSE, TY B (TON)
						AREA	TOTAL	AREA	TOTAL						
						(SQ FT)	(TON)	(SQ FT)	(TON)						
[F.A.P. 662 (IL 4)]															
LIMITS OF IMPROVEMENT:		433+13.50													
SECTION BEGINS:		433+58.50													
ALLEN RD	436+05.39	LT	BIT	(Measured Using CADD)	2.625							587.82	9.60	9.60	
HMA P.E.	453+98.40	RT	BIT	7	23	2.625			210.00	3.43				3.43	0.98
RICHIE RD	462+76.72	RT	BIT	(Measured Using CADD)	2.625							1,165.31	19.03	19.03	
HMA P.E. (w/ MBT Trailing)	473+13.70	LT	BIT	(Measured Using CADD)	2.625				433.75	7.08				7.08	1.36
AGG C.E.	486+43.90	RT	AGG	9	42	8	459.00	22.85						22.85	1.45
PCC C.E.	487+65.50	RT	PCC	4	54	2.625			232.00	3.79				3.79	
HMA P.E.	489+11.80	LT	BIT	7	23	2.625			210.00	3.43				3.43	0.90
HMA P.E. (w/ MBT Trailing)	507+44.00	LT	BIT	(Measured Using CADD)	2.625				364.96	5.96				5.96	1.19
LANGE RD	515+85.74	RT	O&C	(Measured Using CADD)	2.625							1,238.51	20.23	20.23	
STANDARD CITY RD	542+51.30	LT	O&C	(Measured Using CADD)	2.625							1,608.34	26.27	26.27	
HETTICK RD	542+51.30	RT	O&C	(Measured Using CADD)	2.625							1,592.26	26.01	26.01	
HMA P.E. (w/ MBT Trailing)	560+11.90	LT	BIT	(Measured Using CADD)	2.625				380.12	6.21				6.21	
OLD IL 4	587+96.75	LT	BIT	(Measured Using CADD)	2.625							1,641.04	26.80	26.80	
HMA C.E.	595+38.30	LT	BIT	9	32	2.625			369.00	6.03				6.03	1.19
DODGE RD	625+85.12	RT	O&C	(Measured Using CADD)	2.625							1,567.92	25.61	25.61	
HARVEST RD	632+49.03	LT	O&C	(Measured Using CADD)	2.625							762.76	12.46	12.46	
COLBROOK RD	632+49.03	RT	O&C	(Measured Using CADD)	2.625							1,318.43	21.53	21.53	
HMA MBT	644+00.00	LT	BIT	7	20	2.625			294.00	4.80				4.80	
AGG P.E.	644+52.30	RT	AGG	7	28	3.5	245.00	5.34						5.34	1.17
(STA EQN #1):		650+69.37 (BK)													
		2191+15.89 (AH)													
HMA C.E.	2199+82.90	LT	BIT	9	59	2.625			612.00	10.00				10.00	2.19
HMA MBT	2205+95.00	LT	BIT	7	20	2.625			294.00	4.80				4.80	
HMA P.E.	2206+17.90	RT	BIT	7	12	2.625			133.00	2.17				2.17	0.50
HMA C.E.	2210+78.10	RT	BIT	9	27	2.625			324.00	5.29				5.29	
HMA C.E.	2214+65.00	RT	BIT	9	16	2.625			225.00	3.68				3.68	0.59
PCC C.E.	2215+15.19	LT	PCC	A = 990.55 SQ FT		2.625									16.18
PCC C.E.	2216+15.90	LT	PCC	(No Work)											
HMA C.E.	2216+87.20	RT	BIT	3	39	2.625			126.00	2.06				2.06	
HMA P.E.	2219+13.80	RT	BIT	7	23	2.625			210.00	3.43				3.43	0.95
HMA MBT	2219+26.70	RT	BIT	7	20	2.625			294.00	4.80				4.80	
PCC C.E.	2220+72.40	RT	PCC	4	36	2.625			160.00	2.61				2.61	
HMA C.E. (w/ MBT Trailing)	2220+96.60	LT	BIT	(Measured Using CADD)	2.625				609.84	9.96				9.96	1.61
AGG C.E.	2225+32.70	LT	AGG	9	38	8	423.00	21.06						21.06	1.27
(BRIDGE OVERLAY):		2228+12.80 TO													
SN: 059-0056		2228+83.70													
(over HURRICANE CRK)															
HMA C.E.	2229+38.10	LT	BIT	9	20	2.625			261.00	4.26				4.26	0.63
PCC C.E.	2233+55.00	RT	PCC	3	57	2.625			180.00	2.94				2.94	
HMA C.E.	2234+28.00	LT	BIT	9	27	2.625			324.00	5.29				5.29	
PCC C.E.	2236+31.00	RT	PCC	3	61	2.625			192.00	3.14				3.14	
PCC C.E.	2238+16.00	LT	PCC	3	63	2.625			198.00	3.23				3.23	
AGG C.E.	2239+54.90	RT	AGG	9	32	8	342.28	17.04						17.04	1.13
HMA C.E.	2240+83.10	RT	BIT	9	32	2.625			369.00	6.03				6.03	1.12
HMA C.E.	2242+78.00	RT	BIT	9	55	2.625			576.00	9.41				9.41	1.90
HMA C.E.	2243+32.00	LT	BIT	9	18	2.625			243.00	3.97				3.97	0.64
PCC C.E.	2245+38.80	RT	PCC	3	52	2.625			165.00	2.70				2.70	
PCC C.E.	2246+79.10	RT	PCC	3	51	2.625			162.00	2.65				2.65	
(STA EQN #2):		2248+42.00 (BK)													
		6+22.20 (AH)													
HMA C.E.	7+32.90	RT	BIT	9	44	2.625			477.00	7.79				7.79	1.72
CISCO RD	9+78.80	LT	O&C	(Measured Using CADD)	2.625							740.38	12.09	12.09	
SHAD RD	9+78.80	RT	O&C	(Measured Using CADD)	2.625							519.02	8.48	8.48	
HAIG RD	32+41.61	RT	O&C	(Measured Using CADD)	2.625							622.86	10.17	10.17	
LIMITS OF IMPROVEMENT:		32+98.30													
(Miscellaneous Repairs)															
SUBTOTALS						1,469.28	66.28	8,628.67	140.93	13,364.65	218.29				
(PPS 6-01059-0000) PROJECT TOTALS												472	23		

REV. - MS

MODEL: P:\default... FILE: M:\MFC... PROJECT: 0672H41\CD\DATA\CAD\Revised\0672H41_rpt-schedule.dwg

USER NAME = Rene.Cabrera	DESIGNED - RSC	REVISED -
DRAWN - RSC	REVISIONS -	
PLOT SCALE = 100,0000' / in.	CHECKED -	REVISED -
PLOT DATE = 12/19/2022	DATE -	REVISED -

STATE OF ILLINOIS
DEPARTMENT OF TRANSPORTATION

SCHEDULE OF QUANTITIES

SCALE: NTS SHEET 4 OF 6 SHEETS STA. TO STA.

F.A.P. RTE.	SECTION	COUNTY	TOTAL SHEETS	SHEET NO.
662	(E)RS1, (F)RS4-BDR, (67)RS3	MACOUPIN	40	11
CONTRACT NO. 72H41				
ILLINOIS / FED. AID PROJECT				

**EXCAVATING AND GRADING
EXISTING SHOULDER, (SPECIAL)**

TYP. SEC. #	LOCATION	(X2020060)
		QUANTITY
		(UNIT)
[F.A.P. 662 (IL 4)]		
(17)	2221+56.90 TO 2223+50.00 RT	1.93
(6-01059-0000) PROJECT TOTAL		2

GUTTER REMOVAL

TYP. SEC. #	LOCATION	(44000400)
		QUANTITY
		(FOOT)
[F.A.P. 662 (IL 4)]		
(16)	2216+15.90 LT Ex PCC CE	64.82
(17)	2221+56.90 TO 2223+50.00 RT	193.10
(6-01059-0000) PROJECT TOTAL		258

CONCRETE GUTTER, TYPE B

TYP. SEC. #	LOCATION	(60602800)
		QUANTITY
		(FOOT)
[F.A.P. 662 (IL 4)]		
(16)	2216+15.90 LT Ex PCC CE	64.82
(17)	2221+68.90 TO 2223+26.00 RT	157.10
(6-01059-0000) PROJECT TOTAL		222

CLASS SI CONC OUTLET

TYP. SEC. #	LOCATION	LENGTH (FOOT)	(60600095)
			QUANTITY
			(CU YD)
[F.A.P. 662 (IL 4)]			
(17)	2221+56.90 TO 2221+68.90 RT	12.0	0.64
(17)	2223+26.00 TO 2223+50.00 RT	24.0	2.72
(6-01059-0000) PROJECT TOTAL			4

AGGREGATE WEDGE SHOULDER, TYPE B

TYP. SEC. #	LOCATION (STA TO STA) (T _{AVG} = 1.5") (Coef. = 1.6 TONS / CU YD)	LENGTH (FOOT)	WIDTH (FOOT)	(48102100)
				QUANTITY
				(TON)
[F.A.P. 662 (IL 4)]				
(1-3)	433+13.50 TO 502+16.30	6,902.80	8	409.05
(3)	502+16.30 TO 502+45.00 LT	28.70	4	0.85
(7)	506+10.80 TO 506+49.10 LT	38.30	4	1.13
(7-14)	506+49.10 TO 650+69.37	14,420.27	8	854.53
(STA EQN #1): 650+69.37 (BK) = 2191+15.89 (AH)				
(15-16)	2191+15.89 TO 2221+56.90	3,041.01	8	180.21
(17)	2221+56.90 TO 2223+50.00 LT	193.10	4	5.72
(18-19)	2223+50.00 TO 2227+82.80 LT	432.80	8	25.65
(BRIDGE OVERLAY): SN: 059-0056 (over HURRICANE CRK) 2228+12.80 TO 2228+83.70				
(20)	2229+13.70 TO 2230+55.00 RT	141.30	4	4.19
(20)	SE Quadrant	62.03	4	1.84
(20)	2229+58.00 TO 2230+55.00 LT	97.0	4	2.87
(20-22)	2230+55.00 TO 2248+42.00	1,787.0	8	105.90
(STA EQN #2): 2248+42.00 (BK) = 6+22.20 (AH)				
(23-24)	6+22.20 TO 32+98.20	2,676.0	8	158.58
(6-01059-0000) PROJECT TOTAL				1,751

INSERTION CULVERT LINER 36"

TYP. SEC. #	LOCATION	(54390230)
		QUANTITY
		(FOOT)
[F.A.P. 662 (IL 4)]		
(1)	436+45.60	47.20
(6-01059-0000) PROJECT TOTAL		48

PREPARATION OF BASE

LOCATION	(35800100)	
	QUANTITY	
	(SQ YD)	
[F.A.P. 662 (IL 4)]		
486+43.90 LT Ex. Agg CE	51.00	
644+52.30 RT Ex. Agg PE	27.22	
(STA EQN #1): 650+69.37 (BK) = 2191+15.89 (AH)		
2225+32.70 LT Ex. Agg CE	47.00	
(BRIDGE OVERLAY): SN: 059-0056 (over HURRICANE CRK) 2228+12.80 TO 2228+83.70		
2239+54.90 RT Ex. Agg CE	38.03	
(STA EQN #2): 2248+42.00 (BK) = 6+22.20 (AH)		
(6-01059-0000) PROJECT TOTAL		164

PAVEMENT MARKING REMOVAL- GRINDING

LOCATION (Rem of TEMP PAVT MK LINE 5 on Brdg Pavt)	LENGTH (FOOT)	(78300201)
		QUANTITY
		(SQ FT)
[F.A.P. 662 (IL 4)]		
(STAGE 2)		
Bridge Approach	30.0	25.0
(BRIDGE OVERLAY): SN: 059-0056 (over HURRICANE CRK) 2228+12.80 TO 2228+83.70		
Bridge Approach	30.0	25.0
(6-01059-0000) PROJECT TOTAL		109

MODIFIED URETHANE PAVEMENT MARKING SCHEDULE

TYP. #	LOCATION (STA TO STA)	LENGTH (FOOT)	(78009005)		(78009024)	
			LINE 5"			LINE 24"
			YELLOW		WHITE	WHITE
			SOLID	SKIP-DASH	SOLID	SOLID
			(FOOT)	(FOOT)	(FOOT)	(FOOT)
[F.A.P. 662 (IL 4)]						
(1-14)	433+13.50 TO 650+69.37	21,755.87		5,438.97	43,511.74	
(11)	OLD IL 4 - 587+96.75 LT				13.0	
(13)	COLBROOK RD - 632+49.01 LT				14.0	
(STA EQN #1): 650+69.37 (BK) = 2191+15.89 (AH)						
(15-16)	2191+15.89 TO 2211+70.00	2,054.11		513.53		
(15-19)	2191+15.89 TO 2228+12.80	3,696.91			7,393.82	
(16)	2211+70.00 TO 2220+20.00 RT	850.0	850.0			
(16)	2211+70.00 TO 2220+20.00 LT	850.0		212.50		
(16-17)	2220+20.00 TO 2222+10.00	190.0		47.50		
(17-19)	2222+10.00 TO 2228+12.80 RT	602.80		150.70		
(17-19)	2222+10.00 TO 2228+12.80 LT	602.80	602.80			
(BRIDGE OVERLAY): SN: 059-0056 (over HURRICANE CRK) 2228+12.80 TO 2228+83.70						
(20-21)	2228+83.70 TO 2230+80.00 RT	196.30		49.07		
(20-21)	2228+83.70 TO 2230+80.00 LT	196.30	196.30			
(20-22)	2228+83.70 TO 2248+42.00	1,958.30			3,916.60	
(21-22)	2230+80.00 TO 2245+06.70	1,426.70		356.68		
(22)	2245+06.70 TO 2248+42.00 RT	335.30		83.82		
(22)	2245+06.70 TO 2248+42.00 LT	335.30	335.30			
(STA EQN #2): 2248+42.00 (BK) = 6+22.20 (AH)						
(23-24)	6+22.20 TO 20+90.00 RT	1,467.80		366.95		
(23-24)	6+22.20 TO 20+90.00 LT	1,467.80	1,467.80			
(23-24)	6+22.20 TO 32+98.20	2,676.0			5,352.00	
(24)	20+90.00 TO 31+00.00 RT	1,010.0	1,010.0			
(24)	20+90.00 TO 31+00.00 LT	1,010.0		252.50		
(24)	31+00.00 TO 32+98.20 RT	198.20		49.55		
SUBTOTALS			4,533.10	7,539.50	60,315.96	
(6-01059-0000) PROJECT TOTAL			72,389		27	

**PAVEMENT MARKING REMOVAL
- WATER BLASTING**

LOCATION (Rem of TEMP PAVT MK LINE 5 on Brdg Pavt)	LENGTH (FOOT)	(78300202)
		QUANTITY
		(SQ FT)
[F.A.P. 662 (IL 4)]		
(TEMP PVT MK REM)		
Bridge Approach	30.0	40.63
Deck	70.90	96.01
Bridge Approach	30.0	40.63
(6-01059-0000) PROJECT TOTAL		178

STATE OF ILLINOIS
DEPARTMENT OF TRANSPORTATION

SCHEDULE OF QUANTITIES

SCALE: NTS SHEET 5 OF 6 SHEETS STA. TO STA.

F.A.P. RTE.	SECTION	COUNTY	TOTAL SHEETS	SHEET NO.
662	(E)RS1, (F)RS4-BDR, (67)RS3	MACOUPIN	40	12
				CONTRACT NO. 72H41
ILLINOIS / FED. AID PROJECT				

MODEL: D:\p\h\...
 FILE: M:\M\...
 PROJECT: 0672H41...
 DATE: 12/20/2022

PARTIAL DEPTH PATCHING SCHEDULE

TYP. SEC. #	LOCATION (STA TO STA)	LENGTH (FOOT)	WIDTH (FOOT)	AREA (SQ YD)	(X4406060)	(X4406260)	(X4406460)	(X4406660)	(X4421000)	
					PART DEP REM T1 6" (SQ YD)	PART DEP REM T2 6" (SQ YD)	PART DEP REM T3 6" (SQ YD)	PART DEP REM T4 6" (SQ YD)	PARTIAL DEP PATCH (TON)	
[F.A.P. 662 (IL 4)]										
(Northbound Lane)										
(2)	455+00.00 TO 455+40.00	40	4	17.78		17.78			5.97	
(8)	523+30.00 TO 524+50.00	120	4	53.33			53.33		17.92	
(10)	555+10.00 TO 555+90.00	80	4	35.56		35.56			11.95	
(10)	560+65.00 TO 561+25.00	60	4	26.67		26.67			8.96	
(10)	562+20.00 TO 562+60.00	40	4	17.78		17.78			5.97	
(10)	564+35.00 TO 564+50.00	15	4	6.67	6.67				2.24	
(10)	564+90.00 TO 565+25.00	35	4	15.56		15.56			5.23	
(10)	566+80.00 TO 567+60.00	80	4	35.56		35.56			11.95	
(10)	568+60.00 TO 569+20.00	60	4	26.67		26.67			8.96	
(10)	570+30.00 TO 570+55.00	25	4	11.11		11.11			3.73	
(10)	571+40.00 TO 571+90.00	50	4	22.22		22.22			7.47	
(10)	575+10.00 TO 575+80.00	70	4	31.11		31.11			10.45	
(STA EQN #1):										
650+69.37 (BK) = 2191+15.89 (AH)										
(15)	2191+30.00 TO 2192+60.00	130	4	57.78			57.78		19.41	
(15)	2193+30.00 TO 2194+00.00	70	4	31.11		31.11			10.45	
(16)	2197+00.00 TO 2197+70.00	70	4	31.11		31.11			10.45	
(16)	2201+80.00 TO 2202+75.00	95	4	42.22		42.22			14.19	
(16)	2204+70.00 TO 2205+10.00	40	4	17.78		17.78			5.97	
(16)	2208+70.00 TO 2210+50.00	180	4	80.00			80.00		26.88	
(16)	2211+10.00 TO 2211+50.00	40	4	17.78		17.78			5.97	
(16)	2212+00.00 TO 2212+50.00	50	4	22.22		22.22			7.47	
(16)	2213+80.00 TO 2216+60.00	280	4	124.44			124.44		41.81	
(16)	2221+40.00 TO 2222+70.00	130	4	57.78			57.78		19.41	
(BRIDGE OVERLAY):										
SN: 059-0056 (over HURRICANE CRK) 2228+12.80 TO 2228+83.70										
(21-22)	2233+60.00 TO 2234+20.00	60	4	26.67		26.67			8.96	
(22)	2246+10.00 TO 2246+30.00	20	4	8.89		8.89			2.99	
(STA EQN #2):										
2248+42.00 (BK) = 6+22.20 (AH)										
Subtotal (Northbound Lane)					817.78	6.67	437.78	248.89	124.44	274.77
(Southbound Lane)										
(2)	445+70.00 TO 447+20.00	150	4	66.67			66.67		22.40	
(2)	452+35.00 TO 453+50.00	115	4	51.11			51.11		17.17	
(2)	454+30.00 TO 455+00.00	70	4	31.11		31.11			10.45	
(2)	463+00.00 TO 463+40.00	40	4	17.78		17.78			5.97	
(2)	463+50.00 TO 464+10.00	60	4	26.67		26.67			8.96	
(2)	470+70.00 TO 471+90.00	120	4	53.33			53.33		17.92	
(2)	472+40.00 TO 472+60.00	20	4	8.89		8.89			2.99	
(2)	475+10.00 TO 475+60.00	50	4	22.22		22.22			7.47	
(2)	481+50.00 TO 482+00.00	50	4	22.22		22.22			7.47	
(2)	492+20.00 TO 492+80.00	60	4	26.67		26.67			8.96	
(2)	498+25.00 TO 498+75.00	50	4	22.22		22.22			7.47	
(2)	499+15.00 TO 499+45.00	30	4	13.33		13.33			4.48	
Subtotal (Southbound Lane) (pg 1)					362.22	0.00	191.11	171.11	0.00	121.71

PARTIAL DEPTH PATCHING SCHEDULE (cont.)

TYP. SEC. #	LOCATION (STA TO STA)	LENGTH (FOOT)	WIDTH (FOOT)	AREA (SQ YD)	(X4406060)	(X4406260)	(X4406460)	(X4406660)	(X4421000)	
					PART DEP REM T1 6" (SQ YD)	PART DEP REM T2 6" (SQ YD)	PART DEP REM T3 6" (SQ YD)	PART DEP REM T4 6" (SQ YD)	PARTIAL DEP PATCH (TON)	
(Southbound Lane) (cont.)										
(8)	513+40.00 TO 514+00.00	60	4	26.67				26.67	8.96	
(10)	565+70.00 TO 565+90.00	20	4	8.89				8.89	2.99	
(10)	566+30.00 TO 567+10.00	80	4	35.56				35.56	11.95	
(10)	568+70.00 TO 569+20.00	50	4	22.22				22.22	7.47	
(10)	574+60.00 TO 575+40.00	80	4	35.56				35.56	11.95	
(14)	636+70.00 TO 637+10.00	40	4	17.78				17.78	5.97	
(14)	639+70.00 TO 640+30.00	60	4	26.67				26.67	8.96	
(14)	642+30.00 TO 642+70.00	40	4	17.78				17.78	5.97	
(14)	642+90.00 TO 643+90.00	100	4	44.44				44.44	14.93	
(14)	647+90.00 TO 650+79.50	289.50	4	128.67					43.23	
(STA EQN #1):										
650+69.37 (BK) = 2191+15.89 (AH)										
(15-16)	2191+15.89 TO 2195+50.00	434.11	4	192.94					192.94	
(16)	2196+70.00 TO 2197+00.00	30	4	13.33				13.33	4.48	
(16)	2202+60.00 TO 2203+25.00	65	4	28.89				28.89	9.71	
(16)	2205+40.00 TO 2206+10.00	70	4	31.11				31.11	10.45	
(BRIDGE OVERLAY):										
SN: 059-0056 (over HURRICANE CRK) 2228+12.80 TO 2228+83.70										
(21-22)	2233+20.00 TO 2233+75.00	55	4	24.44				24.44	8.21	
(22)	2234+40.00 TO 2234+75.00	35	4	15.56				15.56	5.23	
(STA EQN #2):										
2248+42.00 (BK) = 6+22.20 (AH)										
Subtotal (Southbound Lane) (pg 2)					670.49	0.00	348.89	0.00	321.60	225.29
Subtotal (Southbound Lane)					1,032.72	0.00	540.00	171.11	321.60	346.99
(6-01059-0000) PROJECT TOTAL					1,850.49	7	978	420	446	622

CLASS D PATCHES, 12 INCH

TYP. SEC. #	LOCATION (STA TO STA)	LENGTH (FOOT)	WIDTH (FOOT)	(44201789)	(44201794)	(44201796)
				TYPE II (SQ YD)	TYPE III (SQ YD)	TYPE IV (SQ YD)
[F.A.P. 662 (IL 4)]						
(Northbound Lane)						
(1)	440+10.00	8	12	10.67		
(2)	444+40.00	10	6	6.67		
(2)	444+60.00	16	12		21.33	
(2)	444+80.00	15	6	10.00		
(2)	473+70.00	20	6	13.33		
(2)	499+25.00	50	6			33.33
(11)	578+25.00	30	12			40.00
(12)	610+00.00	5	12	6.67		
(13)	627+40.00	5	12	6.67		
(STA EQN #1):						
650+69.37 (BK) = 2191+15.89 (AH)						
(16)	2206+50.00	30	6		20.00	
(BRIDGE OVERLAY):						
SN: 059-0056 (over HURRICANE CRK) 2228+12.80						
(STA EQN #2):						
2248+42.00 (BK) = 6+22.20 (AH)						
(24)	30+80.00	10.00	6	6.67		
(24)	30+90.00	8.00	12	10.67		
Subtotal (Northbound Lane)				71.33	41.33	73.33
(Southbound Lane)						
(2)	440+10.00	8	12	10.67		
(2)	481+00.00	30	6		20.00	
(2)	575+90.00	12	12		16.00	
(11)	582+00.00	5	12	6.67		
(13)	620+90.00	5	12	6.67		
(13)	627+40.00	5	12	6.67		
(STA EQN #1):						
650+69.37 (BK) = 2191+15.89 (AH)						
(BRIDGE OVERLAY):						
SN: 059-0056 (over HURRICANE CRK) 2228+12.80						
(STA EQN #2):						
2248+42.00 (BK) = 6+22.20 (AH)						
(23)	7+10.00	20	12			26.67
(23)	8+90.00	5	12	6.67		
(24)	21+90.00	25	12			33.33
(24)	31+10.00	20	12			26.67
(24)	31+60.00	10	6	6.67		
(24)	32+00.00	8	12	10.67		
Subtotal (Southbound Lane)				54.67	36.00	86.67
(6-01059-0000) PROJECT TOTAL				126	78	160

MODEL: Default
 FILE: M:\MFC_Plan\Subsect-pw-beach-fy.com\FWINDOT\Documents\DOT Office\Dir\Dir: E:\Project\0672\41\LCDD\DATA\CAD\Recess\0672\41\41-rhs-sched.dwg

USER NAME = Rene.Cabrera	DESIGNED - RSC	REVISED -
PLOT SCALE = 100,0000' / in.	CHECKED - RSC	REVISED -
PLOT DATE = 12/20/2022	DATE -	REVISED -

**STATE OF ILLINOIS
DEPARTMENT OF TRANSPORTATION**

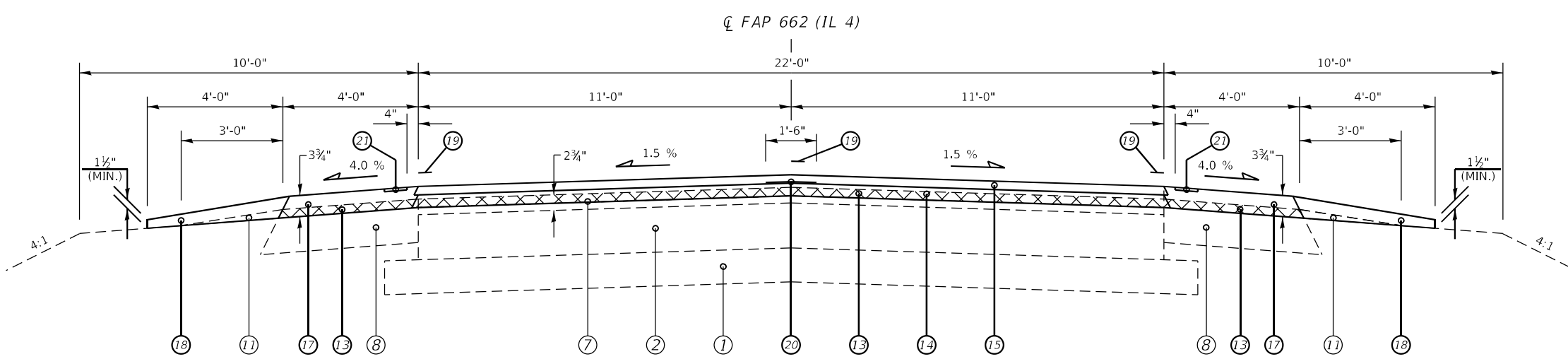
SCHEDULE OF QUANTITIES

SCALE: NTS SHEET 6 OF 6 SHEETS STA. TO STA.

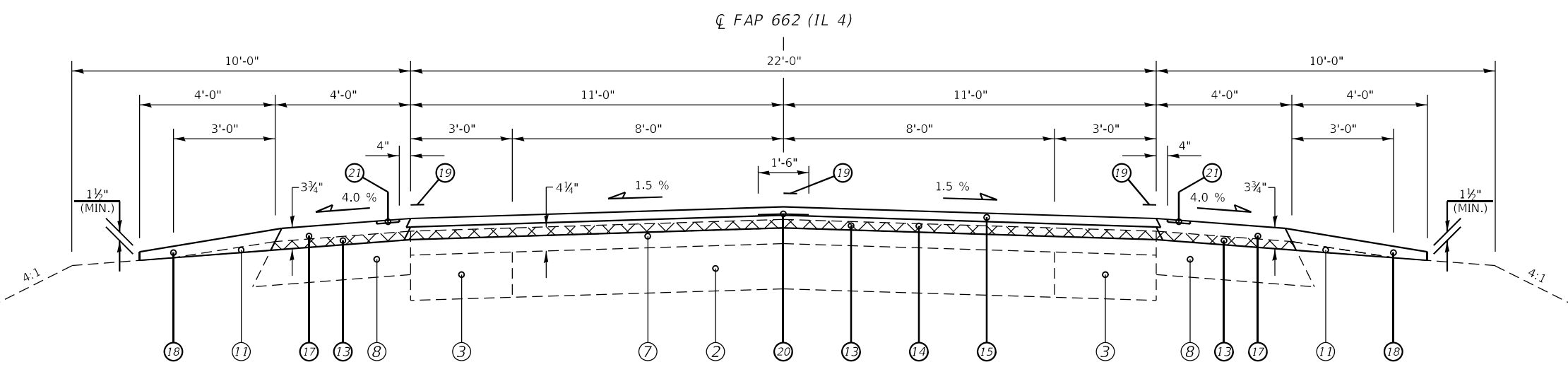
F.A.P. RTE.	SECTION	COUNTY	TOTAL SHEETS	SHEET NO.
662	(E)RS1, (F)RS4-BDR, (67)RS3	MACOUPIN	40	13
CONTRACT NO. 72H41			ILLINOIS FED. AID PROJECT	

LEGEND

- ① EXIST. SUB-BASE GRAN MATL, TY A
- ② EXIST. P.C.C. PAVT 8"
- ③ EXIST. P.C.C. BASE CSE WID, 8"
- ④ EXIST. BIT BASE CSE WID, 9"
- ⑤ EXIST. LONG METAL JT
- ⑥ EXIST. STEEL TIE BAR
- ⑦ EXIST. BIT CONC OVERLAY
- ⑧ EXIST. BIT SHOULDER, 8"
- ⑨ EXIST. PCC SHOULDER, 8"
- ⑩ EXIST. CONC GUTTER, TY B
- ⑪ EXIST. AGGR SHOULDER
- ⑫ EXIST. SHOULDER RUMBLE STRIP
- ⑬ PROP. HOT-MIX ASPHALT SURFACE REMOVAL, 1½"
- ⑭ PROP. HOT-MIX ASPHALT BINDER COURSE, IL-19.0, N50, 2¼"
- ⑮ PROP. HOT-MIX ASPHALT SURFACE COURSE, IL-9.5, MIX "C", N50, 1½"
- ⑯ PROP. HOT-MIX ASPHALT SHOULDER, 6½"
- ⑰ PROP. HOT-MIX ASPHALT SHOULDERS (TONS)
- ⑱ PROP. AGGREGATE WEDGE SHOULDER, TYPE B
- ⑲ PROP. MODIFIED URETHANE PAVEMENT MARKING - LINE 5"
- ⑳ PROP. LONGITUDINAL JOINT SEALANT (INSTALLED BETWEEN BIND CSE & SURF)
- ㉑ PROP. SHOULDER RUMBLE STRIPS, 8"
- ㉒ PROP. CONC GUTTER, TY B
- ㉓ PROP. STEEL PLATE BEAM GUARDRAIL, TYPE A, 6 FOOT POSTS



(1) STA. 433+53.50 TO STA. 444+00.00 [1,046.50']



(2) STA. 444+00.00 TO STA. 499+50.00 [5,550.0']
 (8) STA. 508+75.00 TO STA. 533+60.29 [2,485.29']
 (10) STA. 553+70.10 TO STA. 578+15.73 [2,445.63']

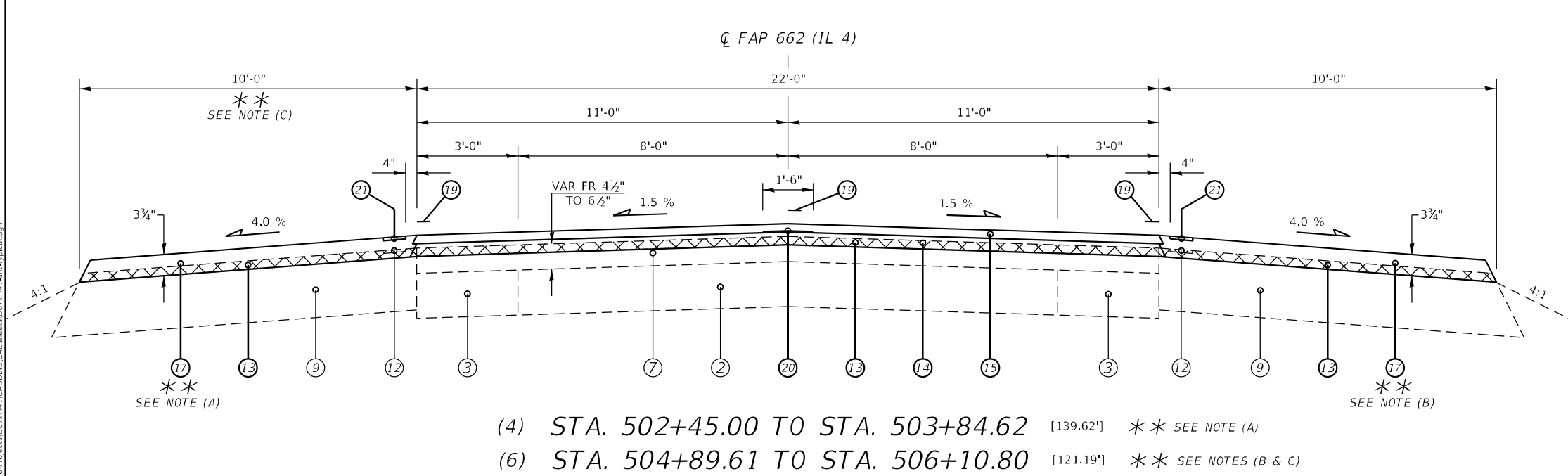
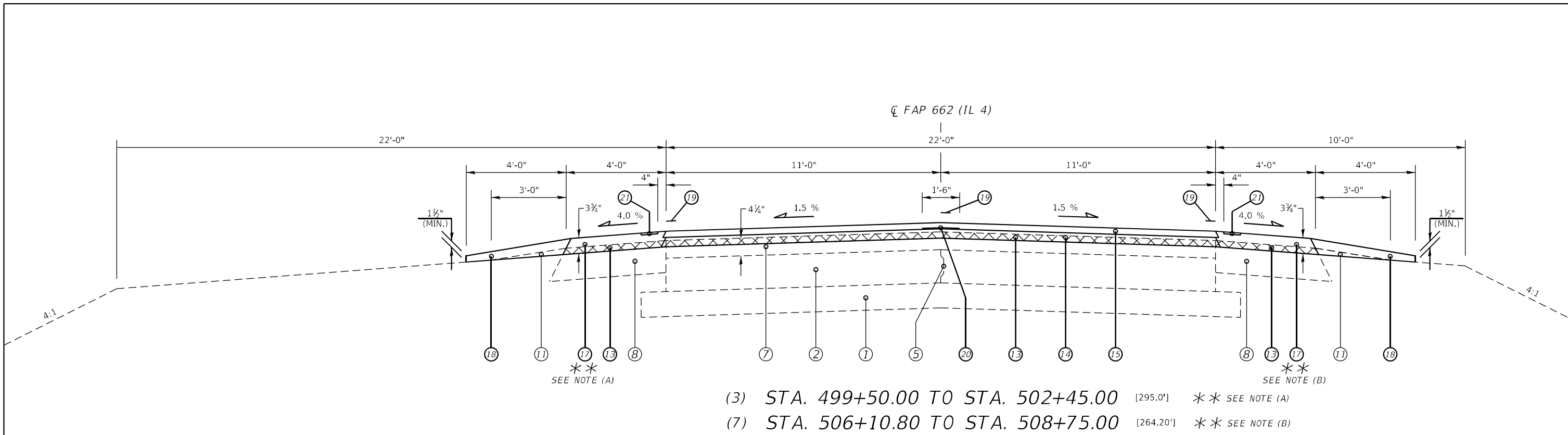
MODEL: Default
 FILE: M:\MIS_Plan\Subsect-pw-beat-fwy.com\FWIDOT\Documents\DOT_Offices\Dir\rdt_6\Project\0672\441\CAD\DATA\CAD\Revised\0672\441-1-15-23\typical.dgn

USER NAME = Rene.Cabrera	DESIGNED - RSC	REVISED -
	DRAWN - RSC	REVISED -
PLOT SCALE = 100,0000' / in.	CHECKED -	REVISED -
PLOT DATE = 1/6/2023	DATE -	REVISED -

**STATE OF ILLINOIS
DEPARTMENT OF TRANSPORTATION**

TYPICAL SECTIONS		F.A.P. RTE.	SECTION	COUNTY	TOTAL SHEETS	SHEET NO.
		662	(E)RS1, (F)RS4-BDR, (67)RS3	MACOUPIN	40	14
SCALE: NTS	SHEET 1 OF 8 SHEETS	STA. 443+53.50 TO STA. 578+15.73		ILLINOIS FED. AID PROJECT		

F.A.P. RTE.	SECTION	COUNTY	TOTAL SHEETS	SHEET NO.
662	(E)RS1, (F)RS4-BDR, (67)RS3	MACOUPIN	40	14
CONTRACT NO. 72H41				



LEGEND

- ① EXIST. SUB-BASE GRAN MATL, TY A
- ② EXIST. P.C.C. PAVT 8"
- ③ EXIST. P.C.C. BASE CSE WID, 8"
- ④ EXIST. BIT BASE CSE WID, 9"
- ⑤ EXIST. LONG METAL JT
- ⑥ EXIST. STEEL TIE BAR
- ⑦ EXIST. BIT CONC OVERLAY
- ⑧ EXIST. BIT SHOULDER, 8"
- ⑨ EXIST. PCC SHOULDER, 8"
- ⑩ EXIST. CONC GUTTER, TY B
- ⑪ EXIST. AGGR SHOULDER
- ⑫ EXIST. SHOULDER RUMBLE STRIP
- ⑬ PROP. HOT-MIX ASPHALT SURFACE REMOVAL, 1 1/2"
- ⑭ PROP. HOT-MIX ASPHALT BINDER COURSE, IL-19.0, N50, 2 1/4"
- ⑮ PROP. HOT-MIX ASPHALT SURFACE COURSE, IL-9.5, MIX "C", N50, 1 1/2"
- ⑯ PROP. HOT-MIX ASPHALT SHOULDER, 6 1/2"
- ⑰ PROP. HOT-MIX ASPHALT SHOULDERS (TONS)
- ⑱ PROP. AGGREGATE WEDGE SHOULDER, TYPE B
- ⑲ PROP. MODIFIED URETHANE PAVEMENT MARKING - LINE 5"
- ⑳ PROP. LONGITUDINAL JOINT SEALANT (INSTALLED BETWEEN BIND CSE & SURF)
- ㉑ PROP. SHOULDER RUMBLE STRIPS, 8"
- ㉒ PROP. CONC GUTTER, TY B
- ㉓ PROP. STEEL PLATE BEAM GUARDRAIL, TYPE A, 6 FOOT POSTS

**** NOTES:**

(A) PROP. WIDTH OF HMA SHLDR CHANGES FR 4' TO 10' AT STA 502+16.30 RT.

(B) PROP. WIDTH OF HMA SHLDR CHANGES FR 10' TO 4' AT STA 506+49.10 RT.

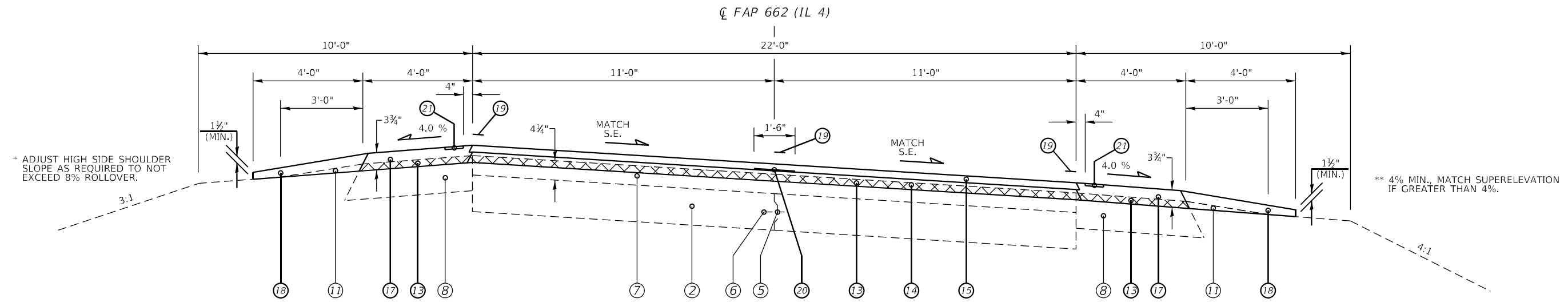
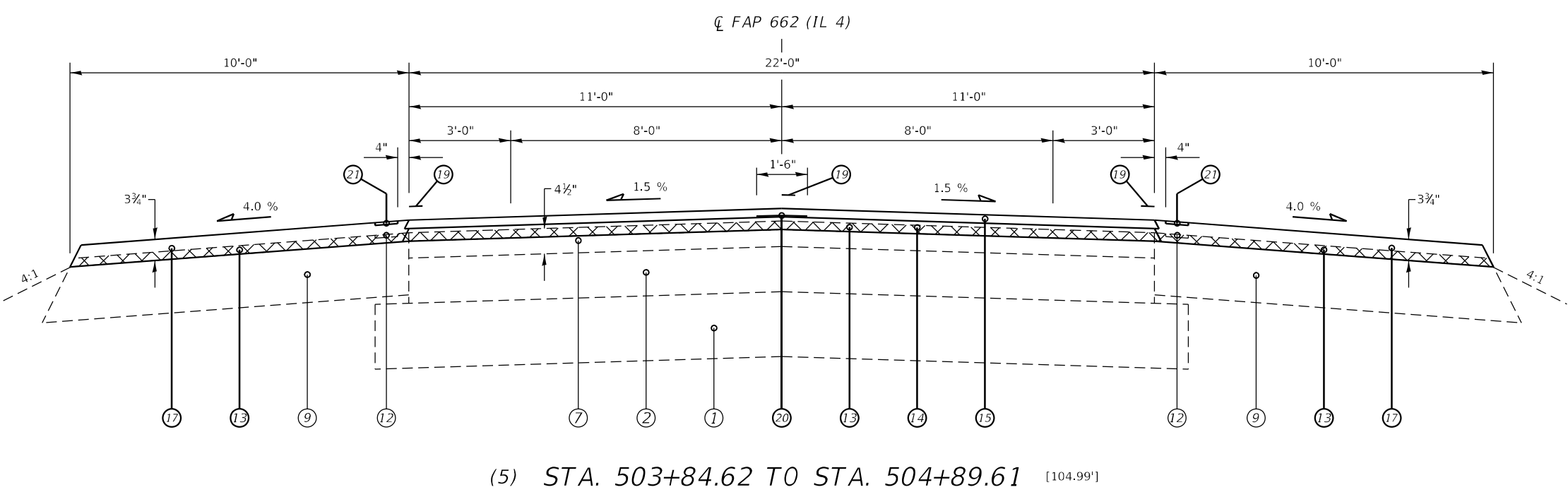
(C) WIDTH OF HMA SHLDR VAR. FR. 10' TO 8' FR. STA 505+95.10 TO 506+10.80 LT.

MODEL: Default
 FILE: \\na11e1.pw.bea.fwy.com\P\DOT\Documents\DOT Office\Projects\DOT Office\Projects\662741\662741-1-15-23\p1cal.dgn

	USER NAME = Rene.Cabrera	DESIGNED - RSC	REVISED -	STATE OF ILLINOIS DEPARTMENT OF TRANSPORTATION	TYPICAL SECTIONS	F.A.P. RTE. 662	SECTION (E)RS1, (F)RS4-BDR, (67)RS3	COUNTY MACOUPIN	TOTAL SHEETS 40	SHEET NO. 15
	PLOT SCALE = 100,0000' / in.	CHECKED -	REVISED -		SCALE: NTS	SHEET 2 OF 8 SHEETS	STA. 499+50.00 TO STA. 508+75.00	CONTRACT NO. 72H41		
	PLOT DATE = 1/6/2023	DATE -	REVISED -		ILLINOIS FED. AID PROJECT					

LEGEND

- ① EXIST. SUB-BASE GRAN MATL, TY A
- ② EXIST. P.C.C. PAVT 8"
- ③ EXIST. P.C.C. BASE CSE WID, 8"
- ④ EXIST. BIT BASE CSE WID, 9"
- ⑤ EXIST. LONG METAL JT
- ⑥ EXIST. STEEL TIE BAR
- ⑦ EXIST. BIT CONC OVERLAY
- ⑧ EXIST. BIT SHOULDER, 8"
- ⑨ EXIST. PCC SHOULDER, 8"
- ⑩ EXIST. CONC GUTTER, TY B
- ⑪ EXIST. AGGR SHOULDER
- ⑫ EXIST. SHOULDER RUMBLE STRIP
- ⑬ PROP. HOT-MIX ASPHALT SURFACE REMOVAL, 1½"
- ⑭ PROP. HOT-MIX ASPHALT BINDER COURSE, IL-19.0, N50, 2¼"
- ⑮ PROP. HOT-MIX ASPHALT SURFACE COURSE, IL-9.5, MIX "C", N50, 1½"
- ⑯ PROP. HOT-MIX ASPHALT SHOULDER, 6½"
- ⑰ PROP. HOT-MIX ASPHALT SHOULDERS (TONS)
- ⑱ PROP. AGGREGATE WEDGE SHOULDER, TYPE B
- ⑲ PROP. MODIFIED URETHANE PAVEMENT MARKING - LINE 5" (INSTALLED BETWEEN BIND CSE & SURF)
- ⑳ PROP. LONGITUDINAL JOINT SEALANT
- ㉑ PROP. SHOULDER RUMBLE STRIPS, 8"
- ㉒ PROP. CONC GUTTER, TY B
- ㉓ PROP. STEEL PLATE BEAM GUARDRAIL, TYPE A, 6 FOOT POSTS



- (11) STA. 578+15.73 TO STA. 600+06.81 [2,191.08']
- (13) STA. 614+84.03 TO STA. 636+36.21 [2,152.18']

STA. 533+60.29 TO STA. 535+76.63 (SE TRANS.)
 STA. 535+76.63 TO STA. 551+53.76 (FULL SE = 4.7%)
 STA. 551+53.76 TO STA. 553+70.10 (SE TRANS.)

STA. 578+15.73 TO STA. 580+27.04 (SE TRANS.)
 STA. 580+27.04 TO STA. 597+95.50 (FULL SE = 5.2%)
 STA. 597+95.50 TO STA. 600+06.81 (SE TRANS.)

STA. 614+84.03 TO STA. 616+95.34 (SE TRANS.)
 STA. 616+95.34 TO STA. 634+20.90 (FULL SE = 5.2%)
 STA. 634+20.90 TO STA. 636+36.21 (SE TRANS.)

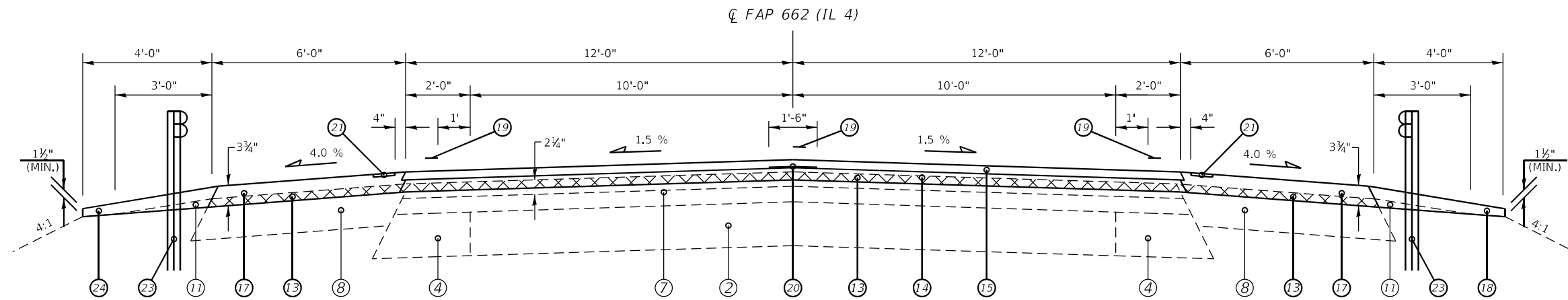
MODEL: Default
 FILE: 72H41_01.dwg
 PROJECT: 72H41_01.dwg
 USER: Rene.Cabrera
 DATE: 1/6/2023

USER NAME = Rene.Cabrera	DESIGNED - RSC	REVISED -
DRAWN - RSC	REVISOR -	
PLOT SCALE = 100,0000' / in.	CHECKED -	REVISOR -
PLOT DATE = 1/6/2023	DATE -	REVISOR -

**STATE OF ILLINOIS
DEPARTMENT OF TRANSPORTATION**

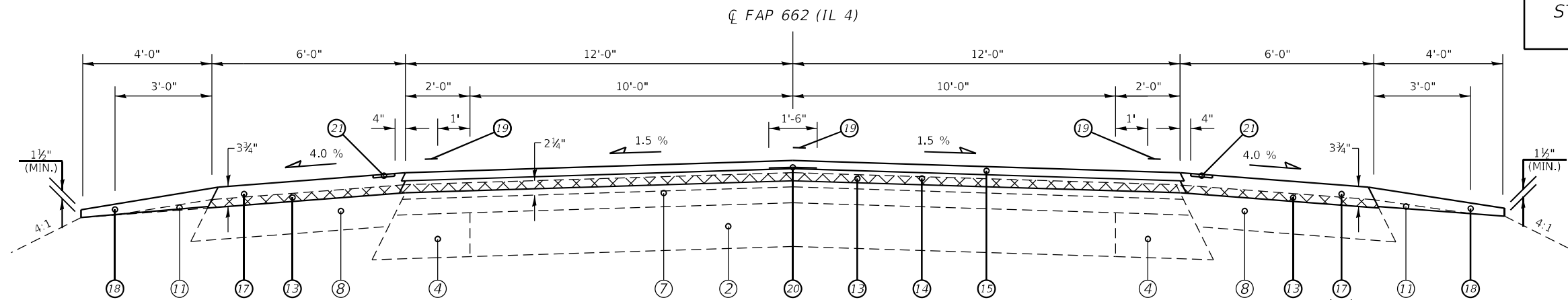
TYPICAL SECTIONS	
SCALE: NTS	SHEET 3 OF 8 SHEETS
STA. 503+84.62 TO STA. 636+36.21	

F.A.P. RTE.	SECTION	COUNTY	TOTAL SHEETS	SHEET NO.
662	(E)RS1, (F)RS4-BDR, (67)RS3	MACOUPIN	40	16
CONTRACT NO. 72H41				
ILLINOIS FED. AID PROJECT				



(20) STA. 2229+28.70 TO STA. 2223+50.00 [126.30']

(BRIDGE OVERLAY):
S.N.: 059-0056
(over HURRICANE CRK)
STA 2228+82.80 TO
STA 2229+13.70



(21) STA. 2230+55.00 TO STA. 2233+64.70 [309.70']

**
SEE NOTE

LEGEND	
①	EXIST. SUB-BASE GRAN MATL, TY A
②	EXIST. P.C.C. PAVT 8"
②A	EXIST. P.C.C. PAVT 9"-6"-9"
③	EXIST. P.C.C. BASE CSE WID, 8"
④	EXIST. BIT BASE CSE WID, 9"
⑤	EXIST. LONG METAL JT
⑥	EXIST. STEEL TIE BAR
⑦	EXIST. BIT CONC OVERLAY
⑧	EXIST. BIT SHOULDER, 8"
⑨	EXIST. PCC SHOULDER, 8"
⑩	EXIST. CONC GUTTER, TY B
⑪	EXIST. AGGR SHOULDER
⑫	EXIST. SHOULDER RUMBLE STRIP
⑬	PROP. HOT-MIX ASPHALT SURFACE REMOVAL, 1 1/2"
⑭	PROP. HOT-MIX ASPHALT BINDER COURSE, IL-19.0, N50, 2 1/4"
⑮	PROP. HOT-MIX ASPHALT SURFACE COURSE, IL-9.5, MIX "C", N50, 1 1/2"
⑯	PROP. HOT-MIX ASPHALT SHOULDER, 6 1/2"
⑰	PROP. HOT-MIX ASPHALT SHOULDERS (TONS)
⑱	PROP. AGGREGATE WEDGE SHOULDER, TYPE B
⑲	PROP. MODIFIED URETHANE PAVEMENT MARKING - LINE 5"
⑳	PROP. LONGITUDINAL JOINT SEALANT (INSTALLED BETWEEN BIND CSE & SURF)
㉑	PROP. SHOULDER RUMBLE STRIPS, 8"
㉒	PROP. CONC GUTTER, TY B
㉓	PROP. STEEL PLATE BEAM GUARDRAIL, TYPE A, 6 FOOT POSTS

** NOTE:
PROP. HMA SHLD 6' WIDTH ENDS AND 4' WIDTH BEGINS 2233+26.40 RT.

MODEL: Default
 FILE: \\na16c-pw-bentley.com\PWD\DOT\Documents\DOT_Offices\Dir\dr_6\Project\0672H41\CAD\data\CAD\Revs\0672H41_rpt-cypical.dgn

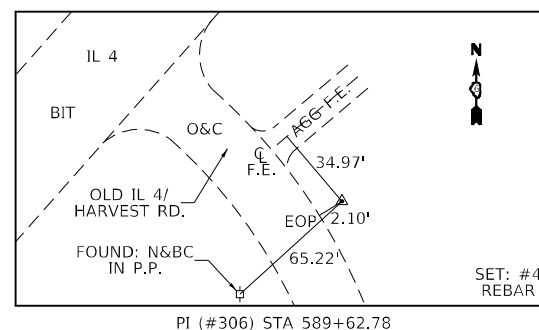
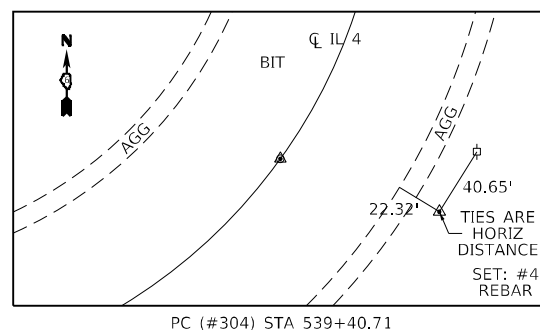
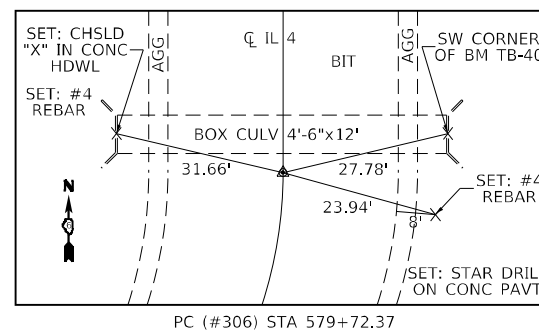
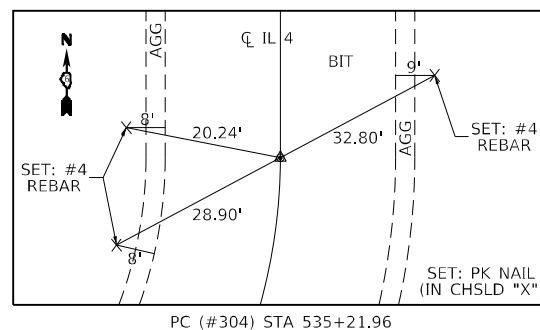
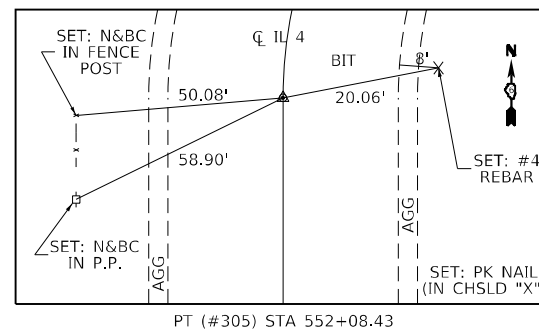
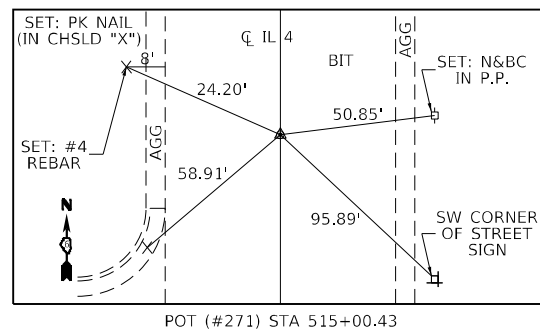
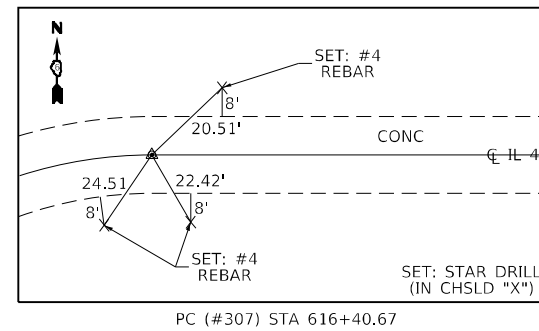
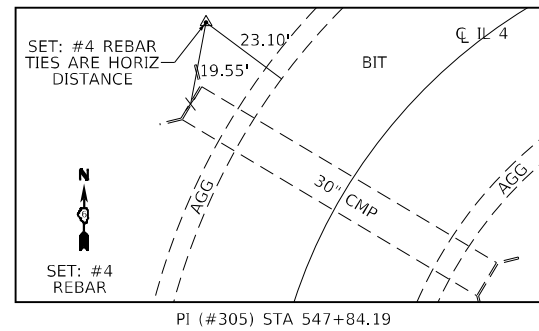
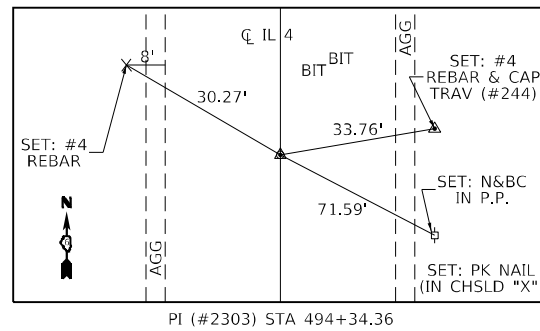
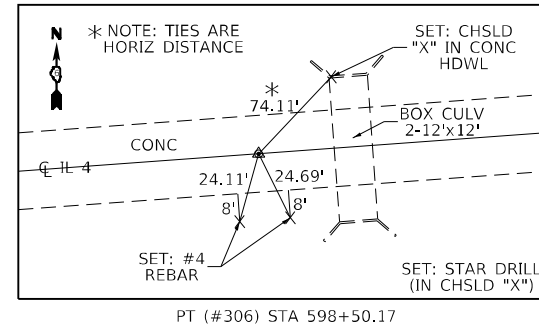
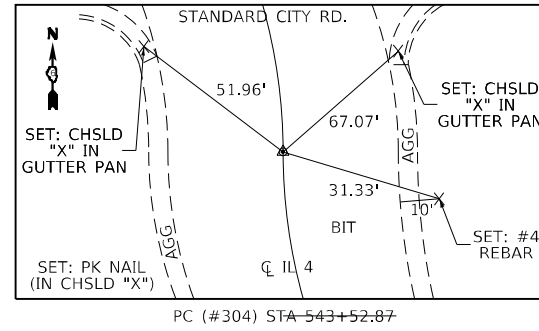
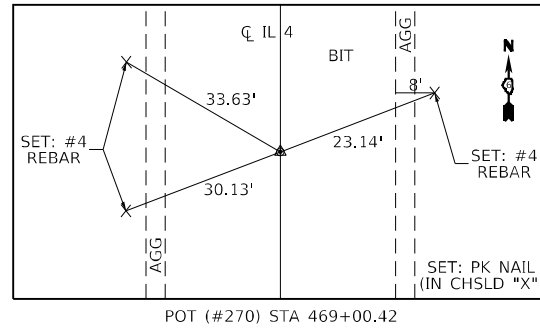
USER NAME = Rene.Cabrera	DESIGNED - RSC	REVISED -
DRAWN - RSC	REVISOR -	
PLOT SCALE = 100,0000' / in.	CHECKED -	REVISOR -
PLOT DATE = 1/6/2023	DATE -	REVISOR -

STATE OF ILLINOIS
DEPARTMENT OF TRANSPORTATION

TYPICAL SECTIONS

SCALE: NTS SHEET 7 OF 8 SHEETS STA. 2229+28.70 TO STA. 2233+64.70

F.A.P. RTE.	SECTION	COUNTY	TOTAL SHEETS	SHEET NO.
662	(E)RS1, (F)RS4-BDR, (67)RS3	MACOUPIN	40	20
CONTRACT NO. 72H41				
ILLINOIS FED. AID PROJECT				



- BM TB-27 SET CHSLD "□" ON W HDWL OF CULV (2.2 MI. S OF HETTICK RD.) STA 2199+35.40 @12.65' RT ELEV. = 631.97
- BM TB-30 60D NAIL IN P.P. W SIDE OF IL 4 (1.8 MI. S OF HETTICK RD.) ELEV. = 637.28
- BM TB-32 SET CHSLD "□" ON BK OF CONC CURB S. SIDE OF DODGE RD. INTRSCN STA 626+10.30 @14.20' RT ELEV. = 639.98
- BM TB-37 SET CHSLD "□" ON NE CORNER OF CONC HDWL SN: 059-2002 (1.1 MI. S OF HETTICK RD.) STA 598+16.60 @28.20' LT ELEV. = 631.22
- BM TB-40 SET CHSLD "□" ON CENTER OF HDWL OF CONC BOX CULV E SIDE OF IL 4 (0.7 MI. S OF HETTICK RD.) STA 579+48.40 @20.60' LT ELEV. = 639.76
- BM TB-43 60D NAIL IN P.P. W SIDE OF IL 4 (0.4 MI. S OF HETTICK RD.) STA 564+47.00 @50.55' LT ELEV. = 648.60
- KASTEN AZ (1934) STD BRASS TABLET W SIDE OF IL 4 ±100' S OF HETTICK RD. INTRSCN

MODEL: D:\p\h\l...
 FILE: 72H41...
 PROJECT: 72H41...
 DRAWING: 72H41...
 DATE: 12/13/2022

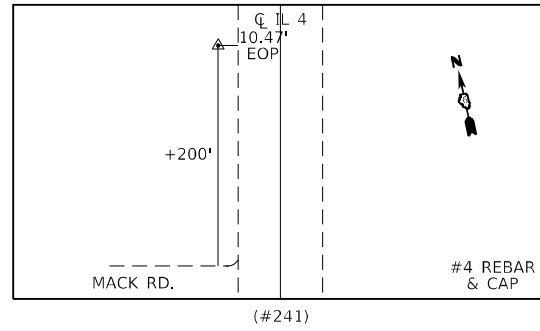
USER NAME = Rene.Cabrera	DESIGNED - RSC	REVISED -
DRAWN - RSC	REVISED -	
PLOT SCALE = 100,0000' / in.	CHECKED -	REVISED -
PLOT DATE = 12/13/2022	DATE -	REVISED -

**STATE OF ILLINOIS
DEPARTMENT OF TRANSPORTATION**

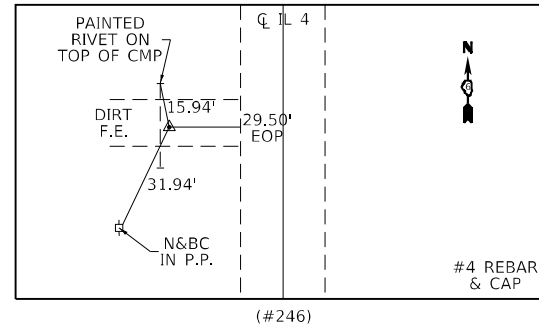
ALIGNMENT, TIES, & BENCHMARKS

SCALE: NTS SHEET 1 OF 2 SHEETS STA. TO STA.

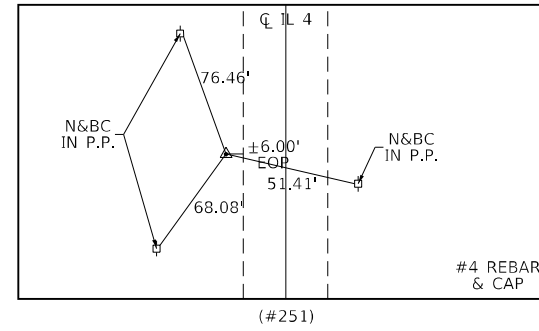
F.A.P. RTE.	SECTION	COUNTY	TOTAL SHEETS	SHEET NO.
662	(E)RS1, (F)RS4-BDR, (67)RS3	MACOUPIN	40	22
CONTRACT NO. 72H41				
ILLINOIS FED. AID PROJECT				



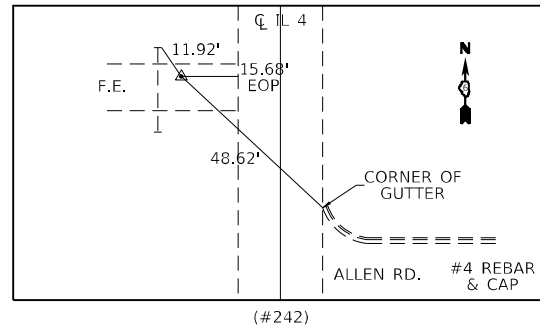
(#241)



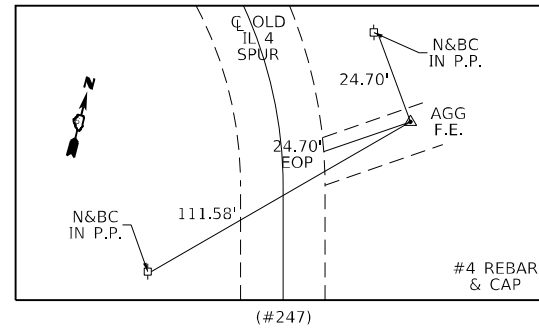
(#246)



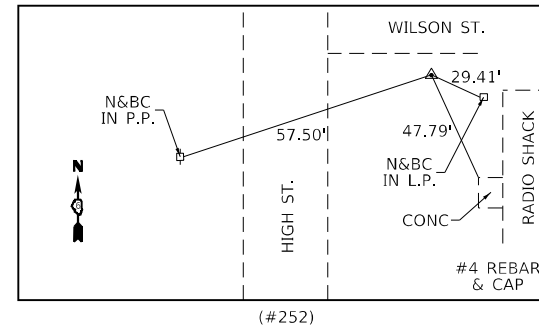
(#251)



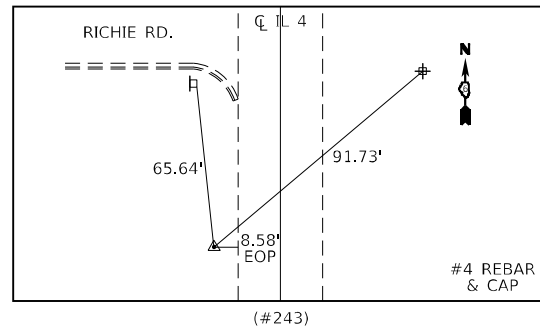
(#242)



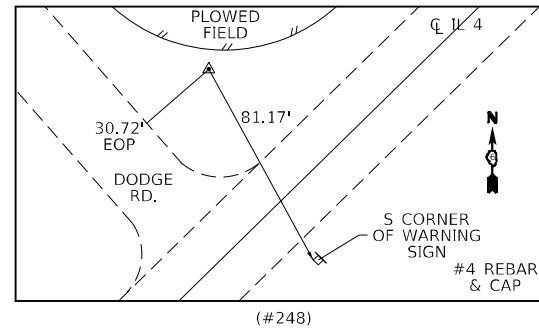
(#247)



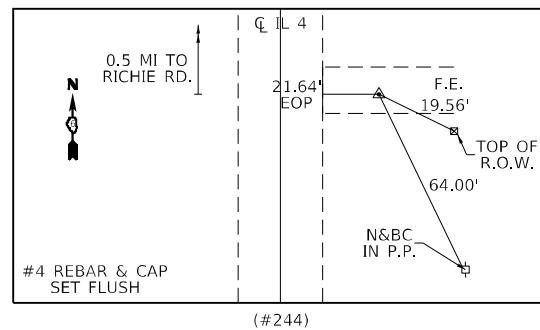
(#252)



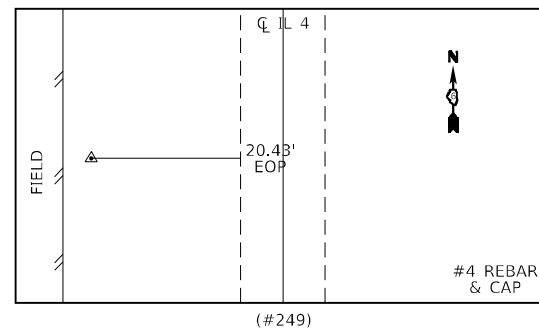
(#243)



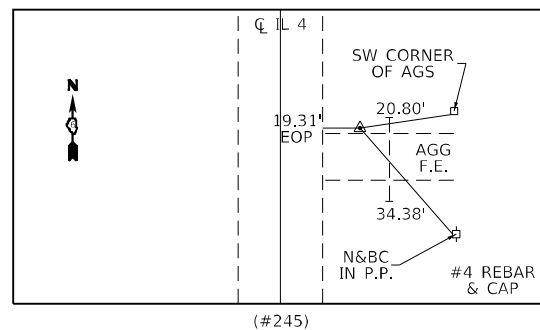
(#248)



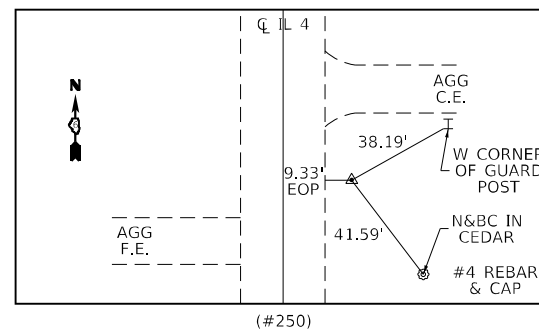
(#244)



(#249)



(#245)



(#250)

MODEL: Default
 FILE: M:\MFC_Plan\Subcontract-bee-fwy.com\PIV\DOT\Documents\DOT Office\Dir\Dir: E:\Project\0672\41\CAD\DATA\CAD\Rebars\0672\41_rpt-ATB.dgn

USER NAME = Rene.Cabrera	DESIGNED - RSC	REVISED -
	DRAWN - RSC	REVISED -
PLOT SCALE = 100,0000' / in.	CHECKED -	REVISED -
PLOT DATE = 12/13/2022	DATE -	REVISED -

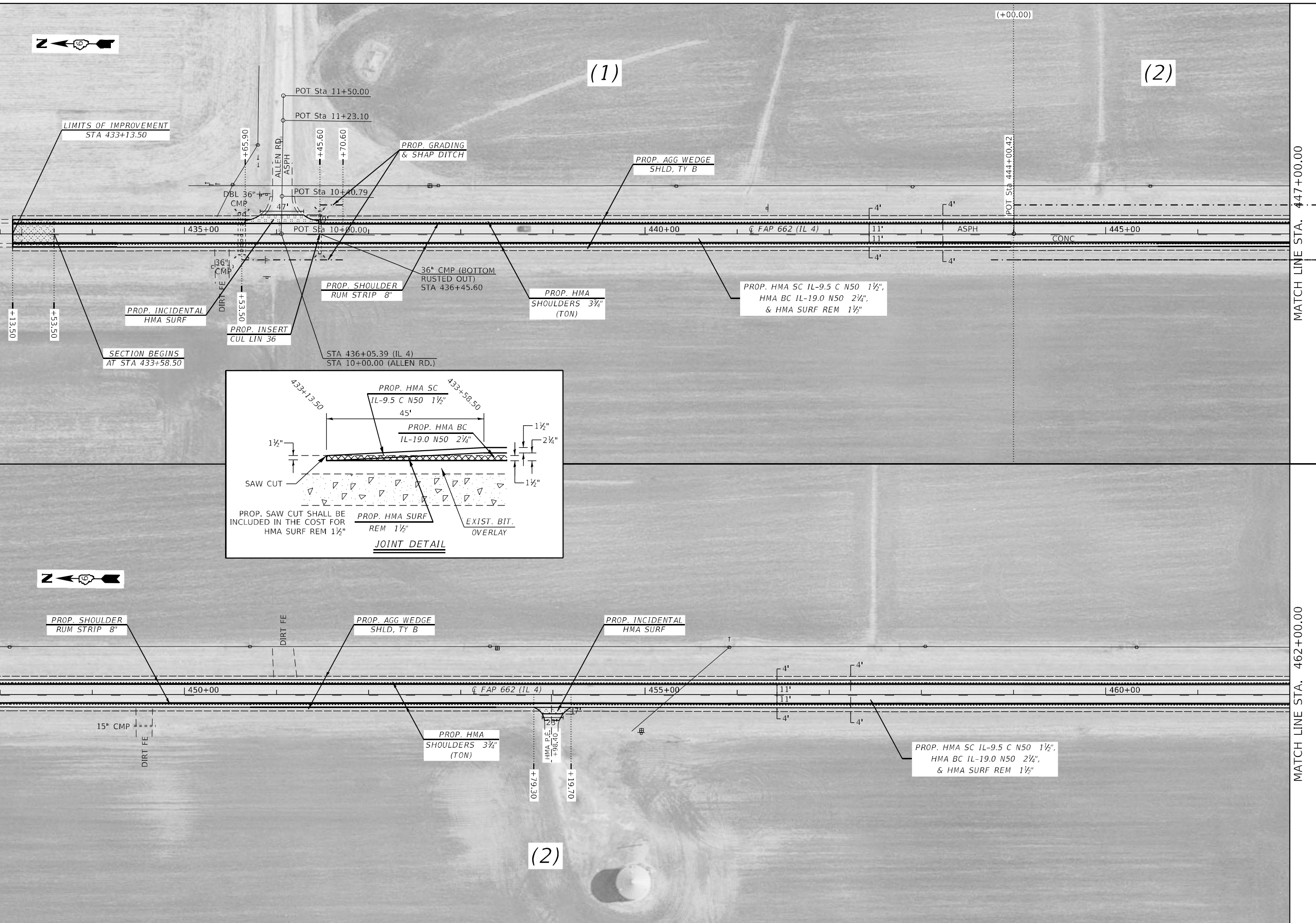
**STATE OF ILLINOIS
DEPARTMENT OF TRANSPORTATION**

ALIGNMENT, TIES, & BENCHMARKS

SCALE: NTS SHEET 2 OF 2 SHEETS STA. TO STA.

F.A.P. RTE.	SECTION	COUNTY	TOTAL SHEETS	SHEET NO.
662	(E)RS1, (F)RS4-BDR, (67)RS3	MACOUPIN	40	23
CONTRACT NO. 72H41				
ILLINOIS FED. AID PROJECT				

MODEL: Default
 FILE: 72H41_Plan_Sheets.dwg
 PROJECT: 72H41_Plan_Sheets.dwg
 USER: Rene.Cabrera



USER NAME = Rene.Cabrera	DESIGNED - RSC	REVISED -
DRAWN - RSC	REVISED -	
PLOT SCALE = 100,0000' / in.	CHECKED -	REVISED -
PLOT DATE = 12/20/2022	DATE -	REVISED -

**STATE OF ILLINOIS
 DEPARTMENT OF TRANSPORTATION**

PLAN SHEETS

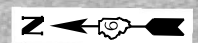
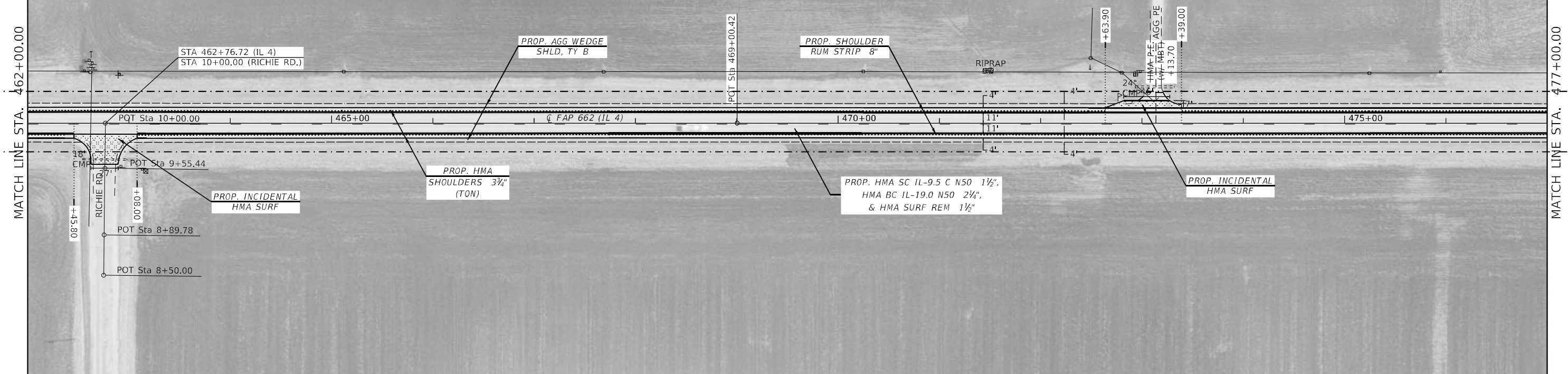
SCALE: 50 SHEET 1 OF 16 SHEETS STA. 432+00.00 TO STA. 462+00.00

F.A.P. RTE.	SECTION	COUNTY	TOTAL SHEETS	SHEET NO.
662	(E)RS1, (F)RS4-BDR, (67)RS3	MACOUPIN	40	24
CONTRACT NO. 72H41			ILLINOIS FED. AID PROJECT	

(2)

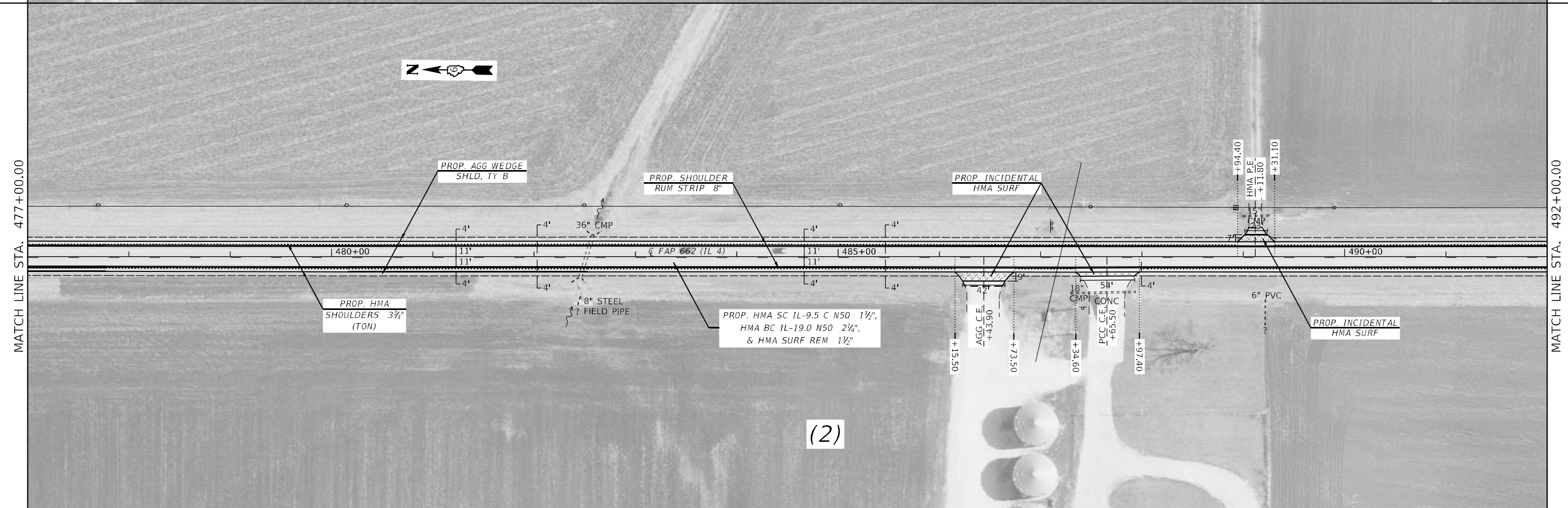
MATCH LINE STA. 462+00.00

MATCH LINE STA. 477+00.00



MATCH LINE STA. 477+00.00

MATCH LINE STA. 492+00.00



(2)

MODEL: Default
FILE: \\mde\p\build\paw\benefit\com\PI\DOT\Documents\DOT Office\Drawings\61\Projects\0672\41\CAD\Drawings\0672\41\paw\plan50.dgn

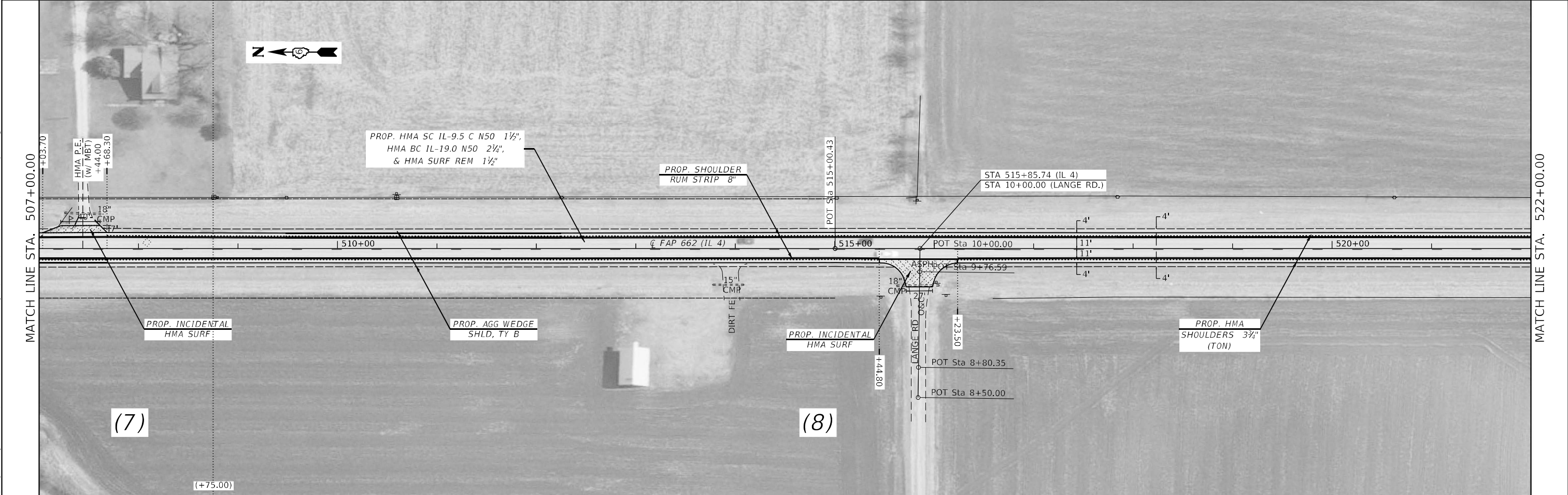
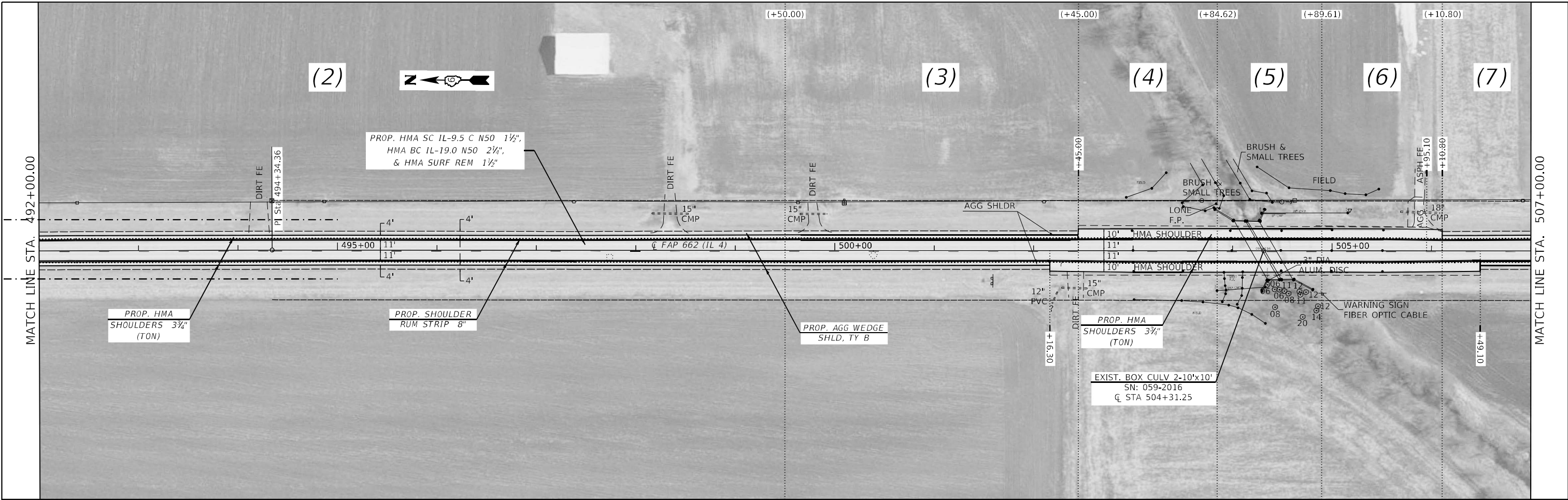
USER NAME = Rene.Cabrera	DESIGNED -	REVISED -
DRAWN -	REVISED -	
PLOT SCALE = 100,0000' / in.	CHECKED -	REVISED -
PLOT DATE = 12/20/2022	DATE -	REVISED -

**STATE OF ILLINOIS
DEPARTMENT OF TRANSPORTATION**

PLAN SHEETS

SCALE: 50 SHEET 2 OF 16 SHEETS STA. 462+00.00 TO STA. 492+00.00

F.A.P. RTE.	SECTION	COUNTY	TOTAL SHEETS	SHEET NO.
662	(E)RS1, (F)RS4-BDR, (67)RS3	MACOUPIN	40	25
CONTRACT NO. 72H41				
ILLINOIS FED. AID PROJECT				



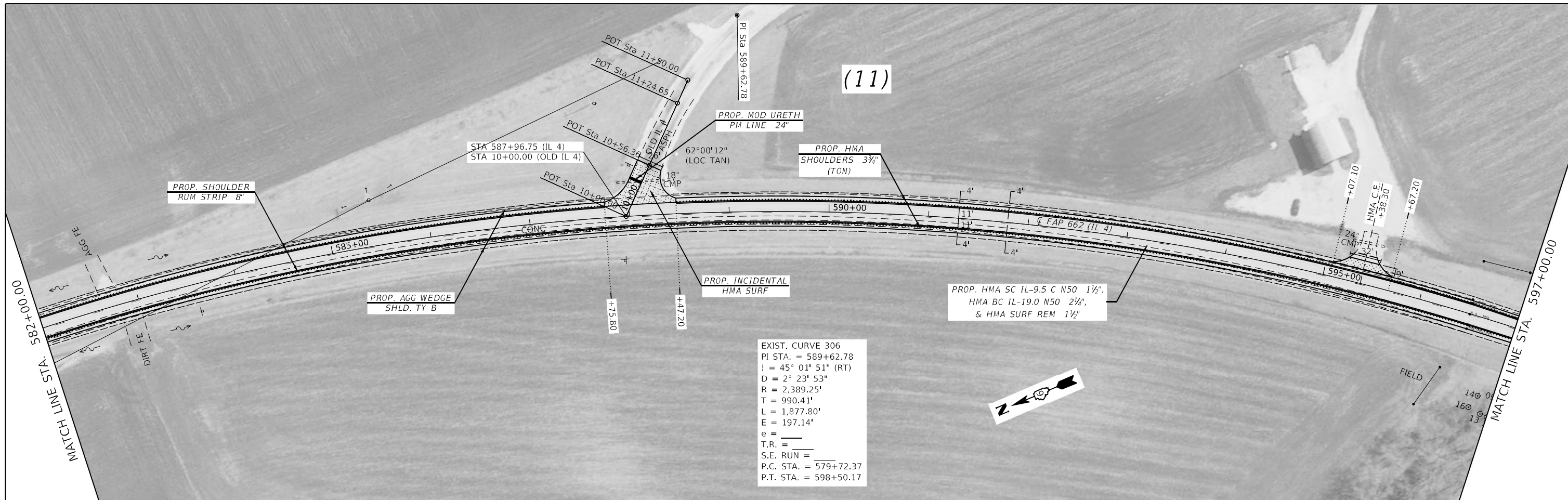
MODEL: Default
 FILE: \\na16r-pw-bentley.com\PIV\DOT\Documents\DOT Office\Dir\rdt_6\Project\0672\41\CD\Draws\CAD\Revised\0672\41\41-rp-dm-50.dgn

USER NAME = Rene.Cabrera	DESIGNED -	REVISED -
DRAWN -	REVISED -	
PLOT SCALE = 100,0000' / in.	CHECKED -	REVISED -
PLOT DATE = 12/20/2022	DATE -	REVISED -

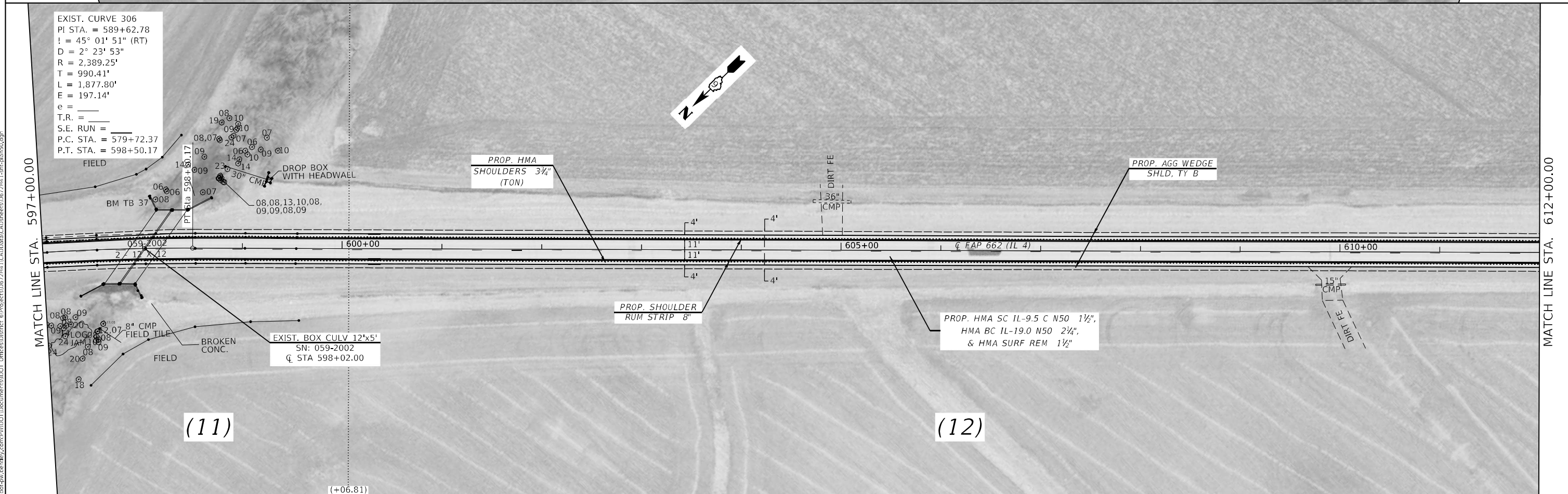
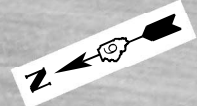
**STATE OF ILLINOIS
DEPARTMENT OF TRANSPORTATION**

PLAN SHEETS			
SCALE: 50	SHEET 3 OF 16 SHEETS	STA. 492+00.00 TO STA. 522+00.00	

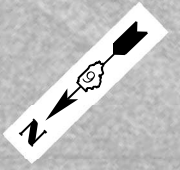
F.A.P. RTE.	SECTION	COUNTY	TOTAL SHEETS	SHEET NO.
662	(E)RS1, (F)RS4-BDR, (67)RS3	MACOUPIN	40	26
CONTRACT NO. 72H41			ILLINOIS FED. AID PROJECT	



EXIST. CURVE 306
 PI STA. = 589+62.78
 ! = 45° 01' 51" (RT)
 D = 2° 23' 53"
 R = 2,389.25'
 T = 990.41'
 L = 1,877.80'
 E = 197.14'
 e = _____
 T.R. = _____
 S.E. RUN = _____
 P.C. STA. = 579+72.37
 P.T. STA. = 598+50.17



EXIST. CURVE 306
 PI STA. = 589+62.78
 ! = 45° 01' 51" (RT)
 D = 2° 23' 53"
 R = 2,389.25'
 T = 990.41'
 L = 1,877.80'
 E = 197.14'
 e = _____
 T.R. = _____
 S.E. RUN = _____
 P.C. STA. = 579+72.37
 P.T. STA. = 598+50.17



MODEL: D:\default
 FILE: 72H41_Plan_Sheets.dwg
 PROJECT: 72H41_Plan_Sheets.dwg
 USER: Rene.Cabrera
 DATE: 12/20/2022

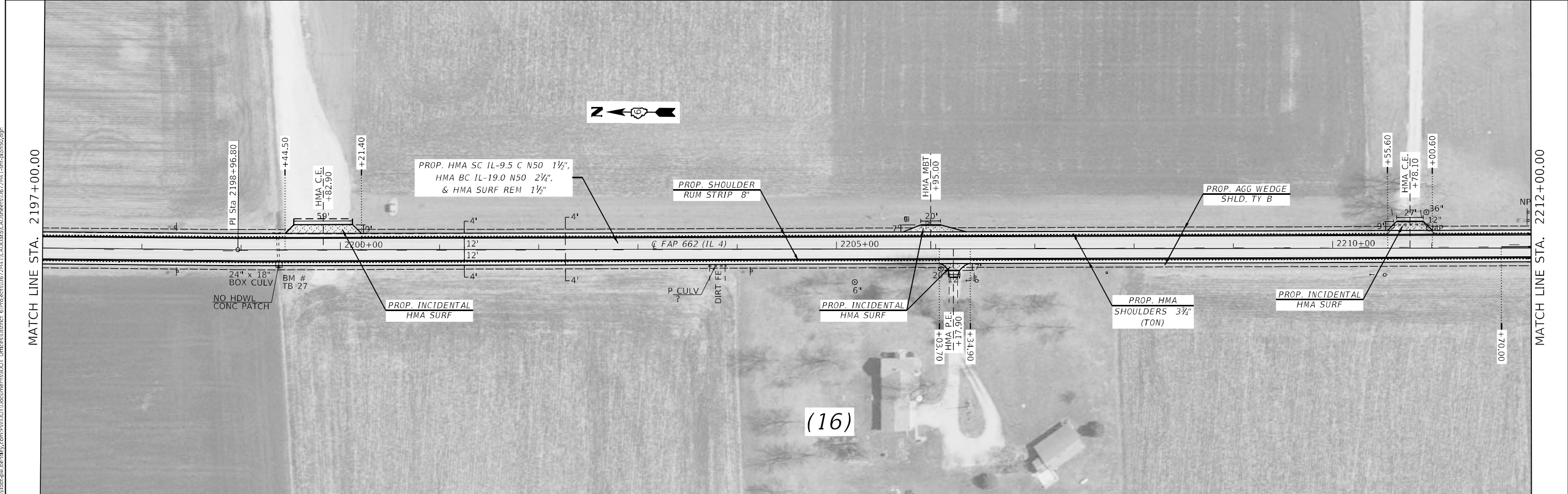
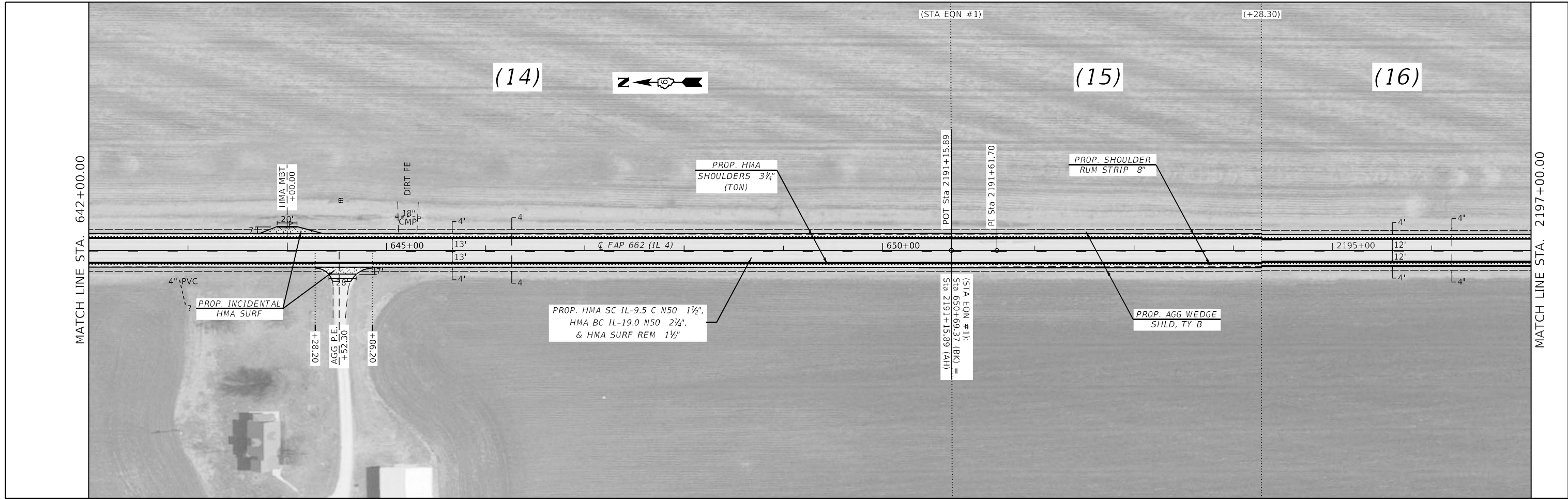
USER NAME = Rene.Cabrera	DESIGNED -	REVISD -
PLOT SCALE = 100,0000' / in.	DRAWN -	REVISD -
PLOT DATE = 12/20/2022	CHECKED -	REVISD -
	DATE -	REVISD -

**STATE OF ILLINOIS
 DEPARTMENT OF TRANSPORTATION**

PLAN SHEETS

SCALE: 50	SHEET 6 OF 16 SHEETS	STA. 582+00.00 TO STA. 612+00.00
-----------	----------------------	----------------------------------

F.A.P. RTE.	SECTION	COUNTY	TOTAL SHEETS	SHEET NO.
662	(E)RS1, (F)RS4-BDR, (67)RS3	MACOUPIN	40	29
CONTRACT NO. 72H41				
ILLINOIS FED. AID PROJECT				



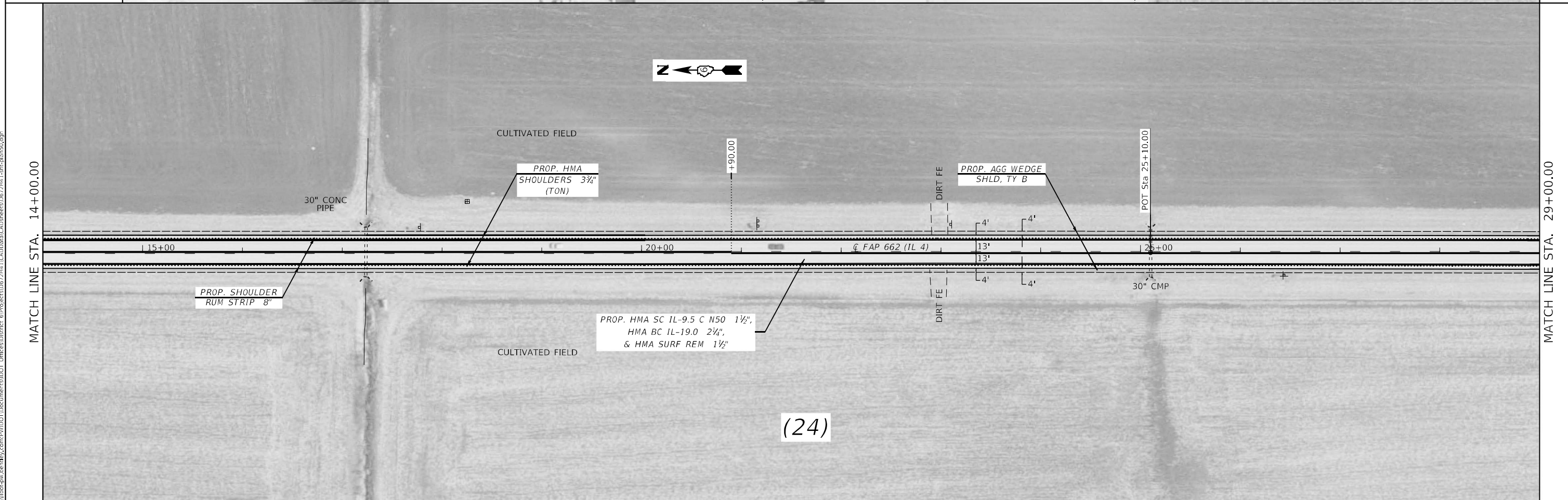
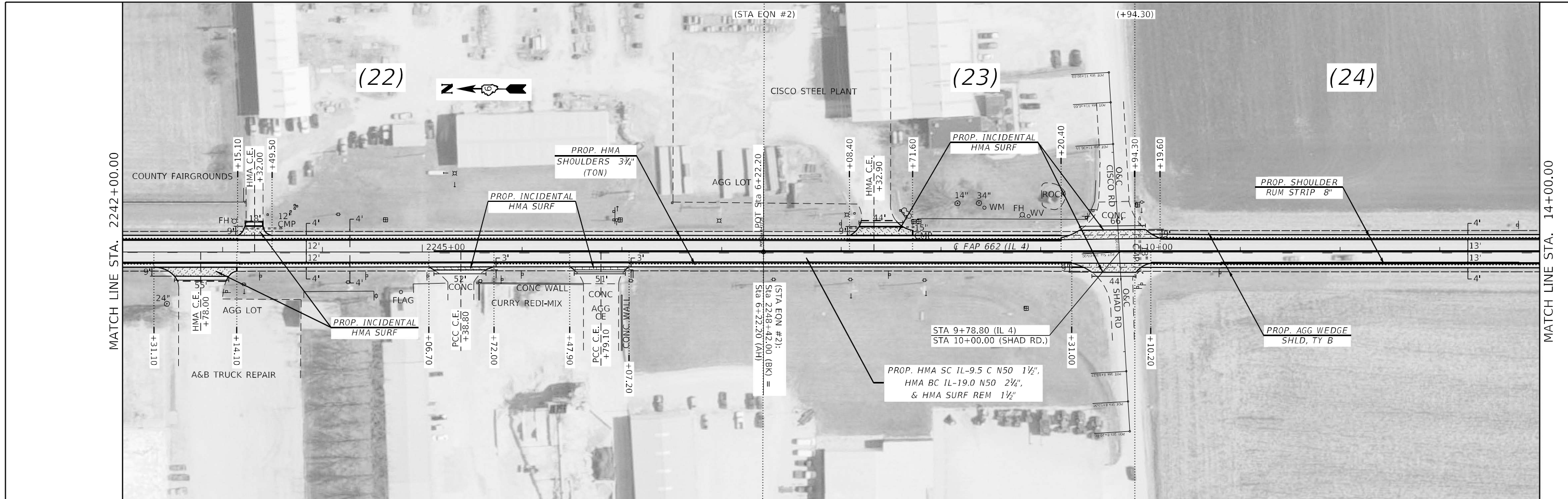
MODEL: Default
 FILE: 72H41_Plan_Sheets.dwg
 PROJECT: 72H41 - I-55/US-41 Bypass
 DRAWING: 72H41_Plan_Sheets.dwg
 DATE: 12/20/2022

USER NAME = Rene.Cabrera	DESIGNED -	REVISED -
DRAWN -	REVISED -	REVISED -
PLOT SCALE = 100,0000' / in.	CHECKED -	REVISED -
PLOT DATE = 12/20/2022	DATE -	REVISED -

STATE OF ILLINOIS
DEPARTMENT OF TRANSPORTATION

PLAN SHEETS			
SCALE: 50	SHEET 8 OF 16 SHEETS	STA. 642+00.00 TO STA. 2212+00.00	

F.A.P. RTE.	SECTION	COUNTY	TOTAL SHEETS	SHEET NO.
662	(E)RS1, (F)RS4-BDR, (67)RS3	MACOUPIN	40	31
CONTRACT NO. 72H41			ILLINOIS FED. AID PROJECT	



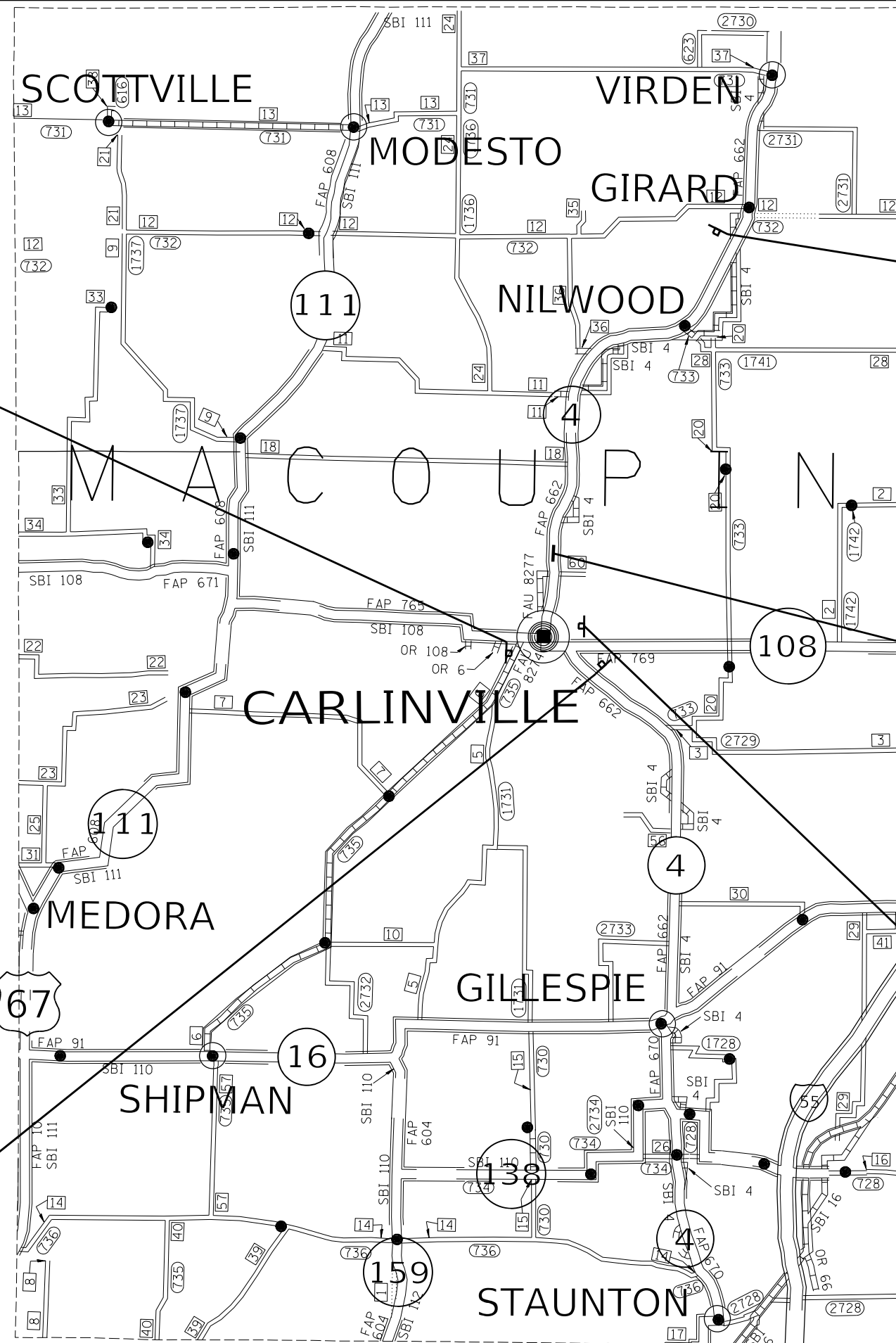
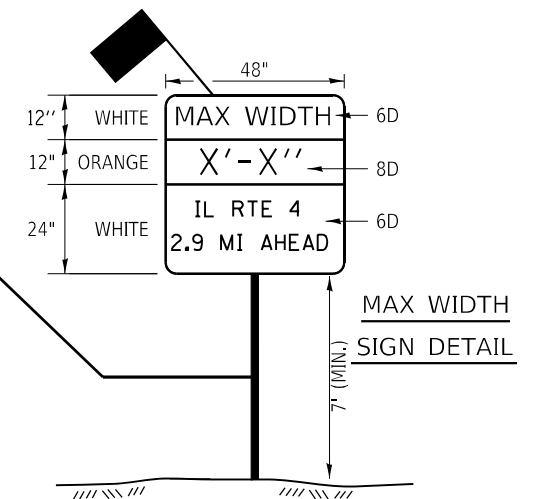
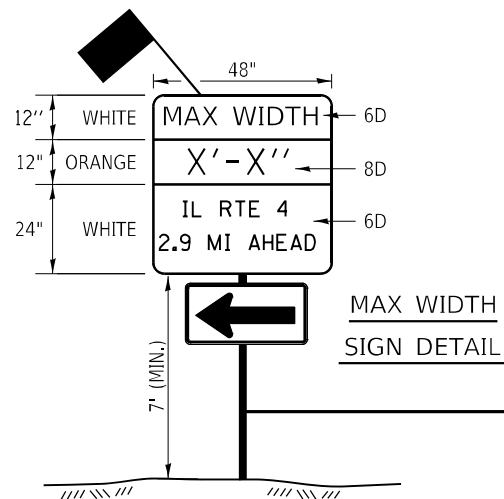
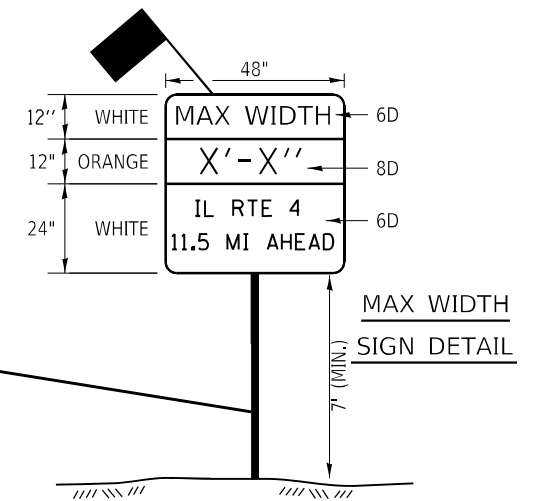
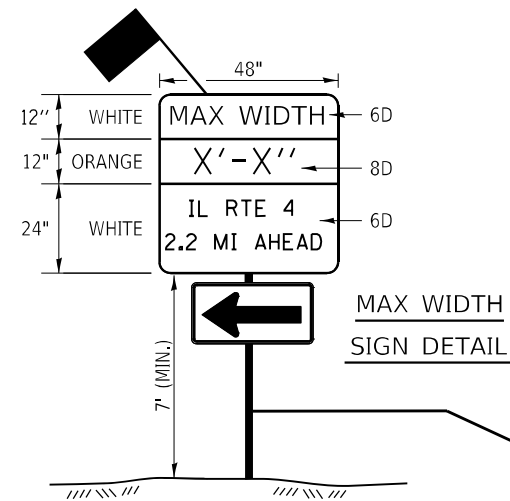
MODEL: Default
 FILE NAME: p:\projects\72H41\CAD\Drawings\CAD\Drawings\72H41_Plan5.dgn

USER NAME = Rene.Cabrera	DESIGNED -	REVISED -
	DRAWN -	REVISED -
PLOT SCALE = 100,0000' / in.	CHECKED -	REVISED -
PLOT DATE = 1/31/2023	DATE -	REVISED -

STATE OF ILLINOIS
DEPARTMENT OF TRANSPORTATION

PLAN SHEETS			
SCALE: 50	SHEET 10 OF 16 SHEETS	STA. 2242+00.00 TO STA. 29+00.00	

F.A.P. RTE.	SECTION	COUNTY	TOTAL SHEETS	SHEET NO.
662	(E)RS1, (F)RS4-BDR, (67)RS3	MACOUPIN	40	33
CONTRACT NO. 72H41			ILLINOIS FED. AID PROJECT	



STRUCTURE LOCATION
 SN: 059-0056
 (over HURRICANE CREEK)
 STA 2228+47.95

MODEL: Default
 FILE: NAME: p:\project-cad\beers\0672741\CAD\DATA\CAD\Beers\0672741\pht-structure.dgn

USER NAME = Rene.Cabrera	DESIGNED - JRD	REVISD -
	DRAWN - JRD	REVISD -
PLOT SCALE = 100,0000' / in.	CHECKED -	REVISD -
PLOT DATE = 12/13/2022	DATE - 06/08/22	REVISD -

STATE OF ILLINOIS
DEPARTMENT OF TRANSPORTATION

STAGE CONSTRUCTION PLAN	
SN: 059-0056 (over HURRICANE CREEK)	
SCALE: NTS	SHEET 2 OF 2 SHEETS STA. TO STA.

F.A.P. RTE.	SECTION	COUNTY	TOTAL SHEETS	SHEET NO.
662	(E)RS1, (F)RS-4-BDR, (67)RS3	MACOUPIN	40	36
CONTRACT NO. 72H41				
ILLINOIS		FED. AID PROJECT		

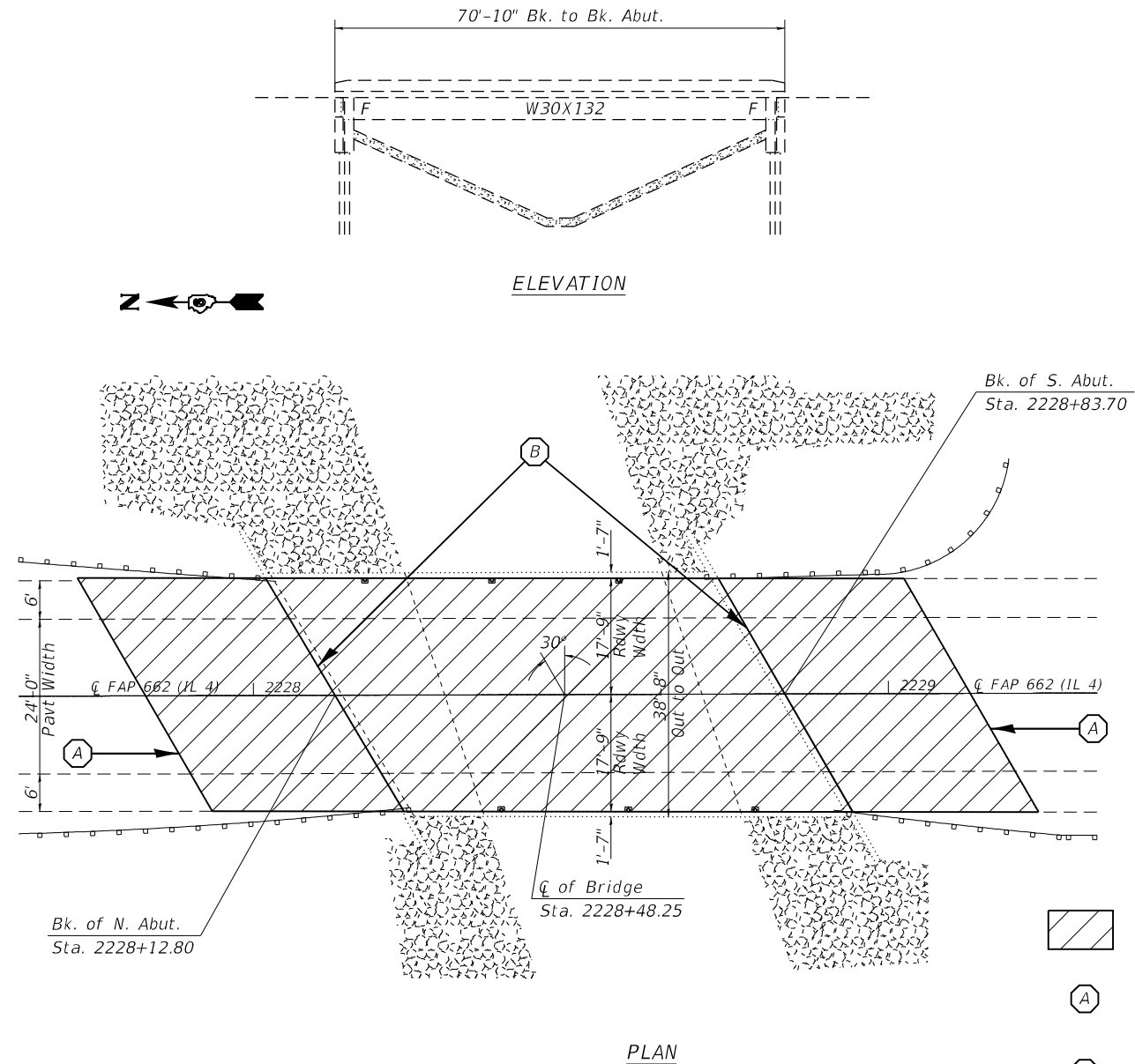
EXISTING STRUCTURE

The existing structure (S.N. 059-0056) is 35'-6" wide by 70'-10" Bk. to Bk. Abut. was constructed in 1996 as Section FB-1 carrying FAP 662 (IL 4) over Hurricane Creek. This structure consists of steel I-beams along single span with a 7.5" PCC deck slab.

GENERAL NOTES

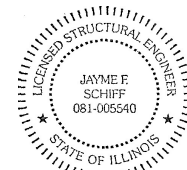
Plan dimensions and details relative to existing plans are subject to nominal construction variations. The Contractor shall field verify existing dimensions and details affecting new construction and make necessary approved adjustments prior to construction or ordering of materials. Such variations shall not be cause for additional compensation for a change in the scope of work; however, the Contractor will be paid for the quantity actually furnished at the unit price bid for the work.

Synthetic fibers are not required with Bridge Deck Microsilica Overlay.



TOTAL BILL OF MATERIAL		
ITEM	UNIT	TOTAL
BRIDGE DECK SCARIFICATION 3/4"	SQ YD	524
BRIDGE DECK MICROSILICA CONCRETE OVERLAY 2 1/2"	SQ YD	524
POLYMER CONCRETE	CU FT	4
BRIDGE DECK GROOVING	SQ YD	506
PROTECTIVE COAT	SQ YD	524
DECK SLAB REPAIR (FULL DEPTH, TYPE 1)	SQ YD	15

GENERAL PLAN
FAP 662 (IL RTE. 4) OVER
HURRICANE CREEK
SECTION (E)RS1, (F)RS4-BDR, (67)RS3
MACOUPIN COUNTY
STATION 14+30.00
STRUCTURE NO. 059-0056



EXPIRES 11-30-2024

Jayme F. Schiff

MODEL: Default
 FILE: \\naufc-pw-bentley.com\P\INDOT\Documents\DOT_Offices\District_6\Projects\057241\CAD\Revised\057241-14-14-2022\059-0056.dgn

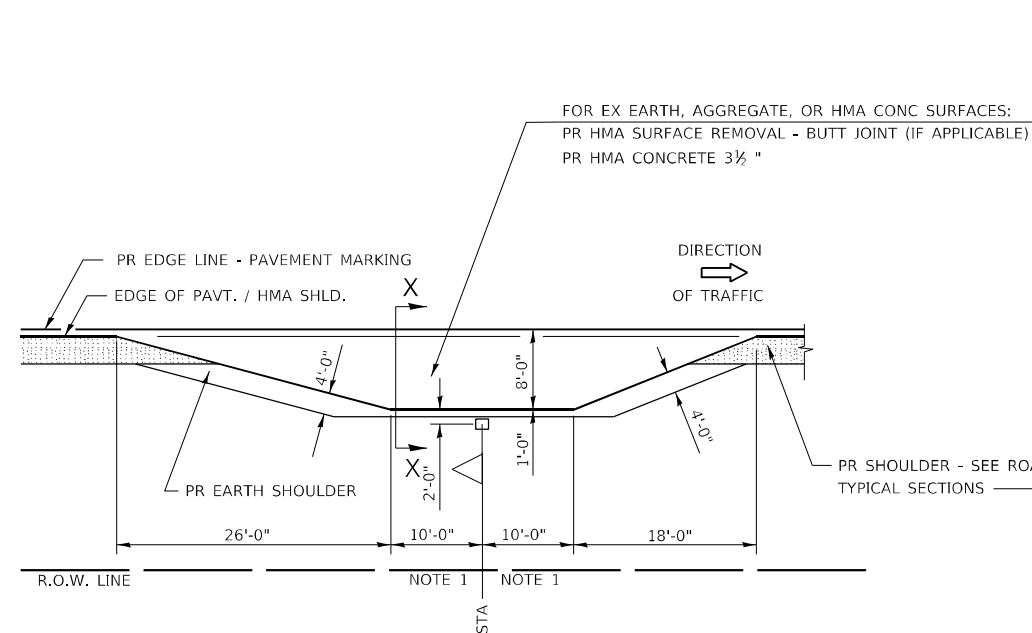
USER NAME = Rene.Cabrera	DESIGNED - JRD	REVISED -
	DRAWN - JRD	REVISED -
PLOT SCALE = 100,0000' / in.	CHECKED -	REVISED -
PLOT DATE = 12/19/2022	DATE -	REVISED -

STATE OF ILLINOIS
DEPARTMENT OF TRANSPORTATION

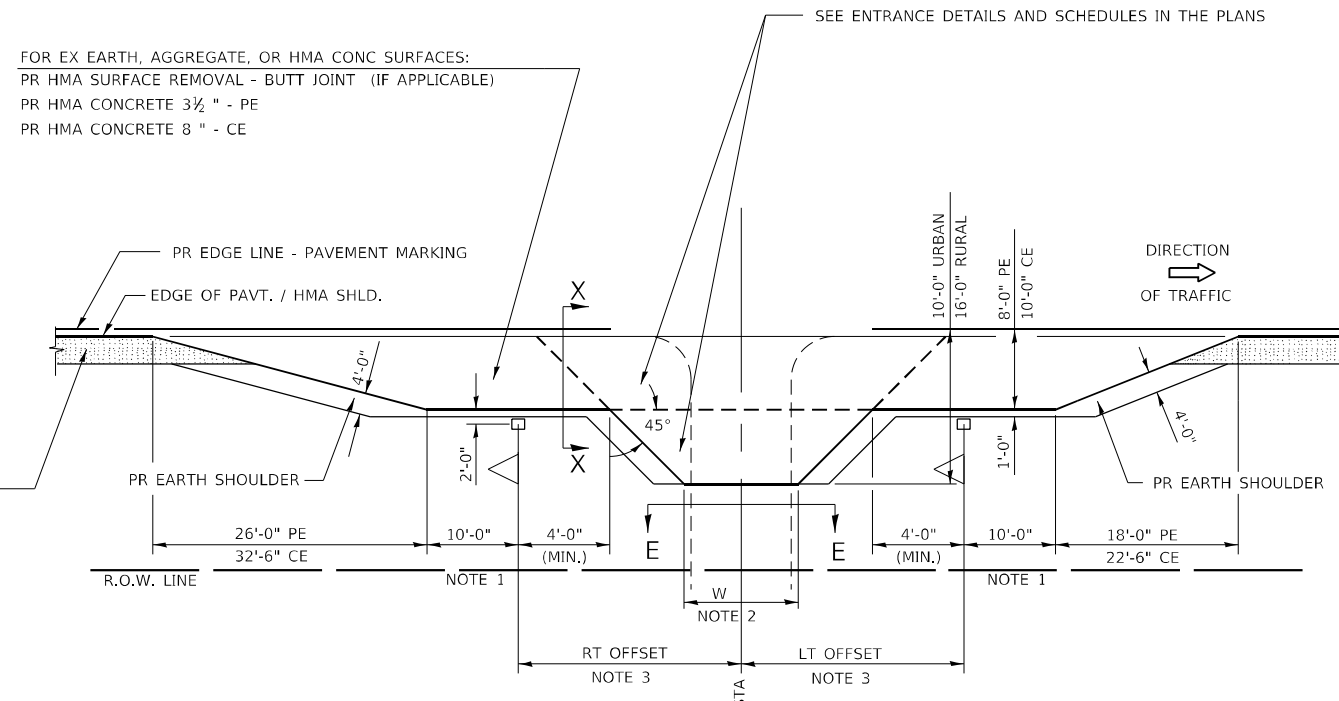
GENERAL PLAN AND ELEVATION SN: 059-0056 (over HURRICANE CREEK)		
SCALE: NTS	SHEET 1 OF 2 SHEETS	STA. TO STA.

F.A.P. RTE.	SECTION	COUNTY	TOTAL SHEETS	SHEET NO.
662	(E)RS1, (F)RS4-BDR, (67)RS3	MACOUPIN	40	37
CONTRACT NO. 72H41				
ILLINOIS FED. AID PROJECT				

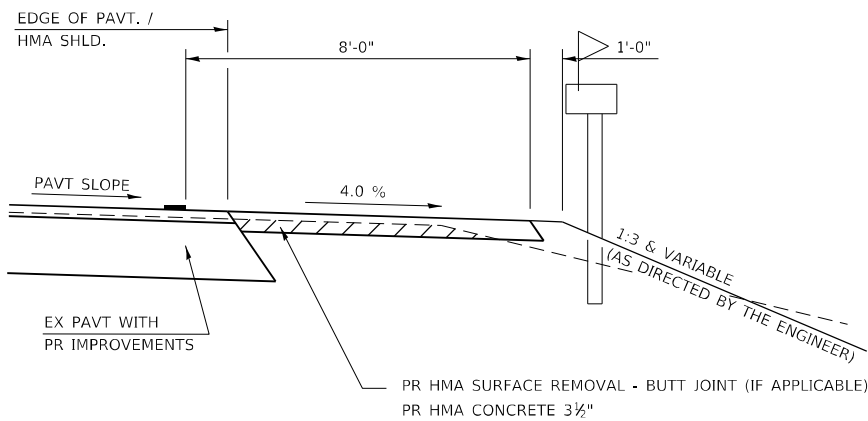
DETAILS OF MAILBOX TURNOUTS



PLAN - MAILBOX TURNOUTS

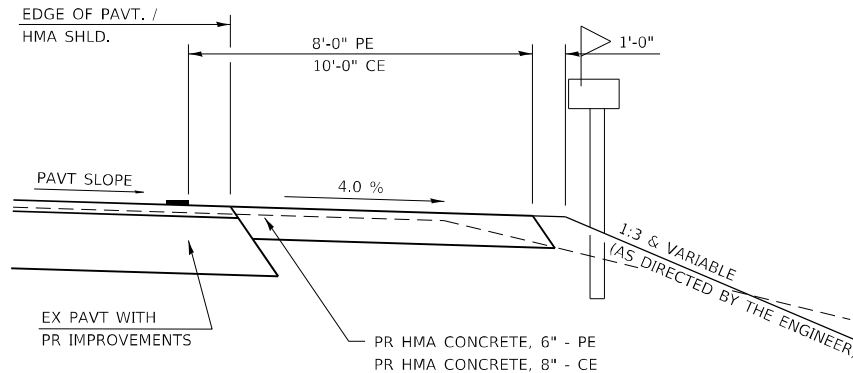


PLAN - COMBINED MAILBOX TURNOUT WITH TRAILING OR LEADING ENTRANCE



SECTION X-X THRU MAILBOX TURNOUT
ALSO APPLIES TO MAILBOX TURNOUTS COMBINED WITH
EX EARTH, AGGREGATE, OR HMA PE & FE

(DETAIL APPLIES WHEN M.B. TURNOUT DOES NOT EXIST.
IF EXISTING, TREAT SAME AS ENTRANCE.)



SECTION X-X THRU MAILBOX TURNOUT
COMBINED WITH EX HMA CONC & PC CONC PE & CE

(DETAIL APPLIES WHEN M.B. TURNOUT DOES NOT EXIST.
IF EXISTING, TREAT SAME AS ENTRANCE.)

- NOTE 1:** IF MORE THAN ONE MAILBOX IS PRESENT, DIMENSION FROM CENTER OF END MAILBOX.
- NOTE 2:** FOR ENTRANCE LAYOUT DIMENSIONS AND SECTIONS A-A & E-E REFER TO THE SCHEDULES IN THE PLANS.
- NOTE 3:** BOTH LT OR RT OFFSETS FOR MAILBOX SHOWN USE OFFSET DIMENSION PER SCHEDULE AND REFER TO LAYOUT SHOWN ON THE PLAN.

ALL DIMENSIONS ARE IN INCHES
UNLESS OTHERWISE SHOWN.

ENT PPP.DGN

MODEL: Default
FILE: Mailbox.dwg
PROJECT: 662 (E)RS1, (F)RS4-BDR, (67)RS
DRAWN: RSC
CHECKED: RSC
DATE: 12/13/2022

USER NAME = Rene.Cabrera	DESIGNED - RSC	REVISED -
	DRAWN - RSC	REVISED -
PLOT SCALE = 100,0000' / in.	CHECKED -	REVISED -
PLOT DATE = 12/13/2022	DATE -	REVISED -

**STATE OF ILLINOIS
DEPARTMENT OF TRANSPORTATION**

**DIST. 6 DETAILS FOR RURAL/URBAN ENT., MAILBOX
TURNOUT & SIDEROADS W/O CONC. GUTTER (3P-PROJ.)**

SCALE: NTS SHEET 2 OF 2 SHEETS STA. TO STA.

F.A.P. RTE.	SECTION	COUNTY	TOTAL SHEETS	SHEET NO.
662	(E)RS1, (F)RS4-BDR, (67)RS	MACOUPIN	40	40
CONTRACT NO. 72H41				
ILLINOIS FED. AID PROJECT				