

STATE OF ILLINOIS
DEPARTMENT OF TRANSPORTATION

** FAI 290
PAP 342

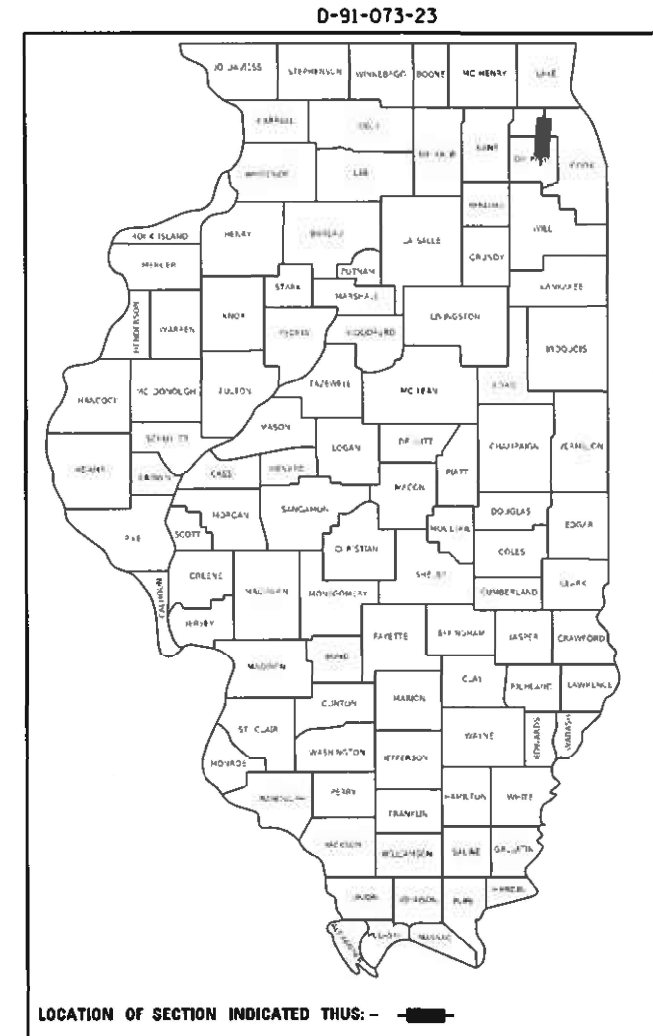
F.A. RATE	SECTION	COUNTY	TOTAL SHEETS	SHEET NO.
**	FAI 290 22 LITTER 3	*	5	1
		ILLINOIS	CONTRACT NO. 62U67	

* COOK AND DUPAGE

FOR INDEX OF SHEETS, SEE SHEET NO.

PROPOSED
HIGHWAY PLANS

FAI ROUTE 290/FAP 342: I-290/IL 53
LAKE COOK RD TO IL 83 (KINGERY HWY)
SECTION: FAI 290 22 LITTER 3
EXPRESSWAY HIGHWAY CLEANING (LITTER/DEBRIS REMOVAL)
COUNTIES: COOK AND DUPAGE
C-91-104-23



FULL SIZE PLANS HAVE BEEN PREPARED USING STANDARD ENGINEERING SCALES. REDUCED SIZED PLANS WILL NOT CONFORM TO STANDARD SCALES. IN MAKING MEASUREMENTS ON REDUCED PLANS, THE ABOVE SCALES MAY BE USED.

J.U.L.I.E.
JOINT UTILITY LOCATION INFORMATION FOR EXCAVATION
1-800-892-0123
OR 811

LOCATION MAP - SEE INDEX OF SHEETS

PROJECT ENGINEER: RODRIGO LEDEZMA (847) 705-4580
PROJECT MANAGER: J. ALAIN MIDY (847) 221-3056

GROSS LENGTH = 138,336 FT. = 26.2 MILE
NET LENGTH = 138,336 FT. = 26.2 MILE

CONTRACT NO. 62U67

STATE OF ILLINOIS
DEPARTMENT OF TRANSPORTATION

SUBMITTED DECEMBER 15, 2022
Jose Luis Lopez
REGIONAL ENGINEER

February 3, 2023
Scott A. Etkin
ENGINEER OF DESIGN AND ENVIRONMENT

February 3, 2023
Stephen M. Smith
DIRECTOR OF HIGHWAYS PROJECT IMPLEMENTATION

PRINTED BY THE AUTHORITY
OF THE STATE OF ILLINOIS

INDEX OF SHEETS

1. TITLE SHEET
2. INDEX OF SHEETS
APPLICABLE STATE STANDARDS
3. SUMMARY OF QUANTITIES
SCHEDULE OF CLEANING STARTING DATES
4. EXPRESSWAY CLEANING: I-290 EXTENSION/ ILL 53,
5. TRAFFIC CONTROL DETAILS FOR FREEWAY SHOULDER CLOSURES
AND PARTIAL RAMP CLOSURES (TC-17)

STATE STANDARDS

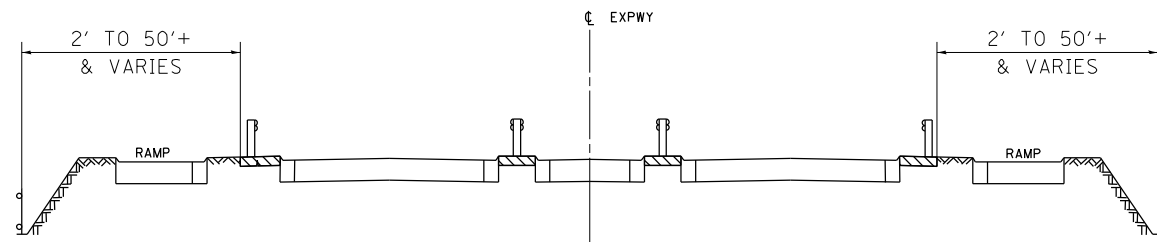
- | | |
|-----------|---|
| 701106-02 | OFF-ROAD OPERATION MULTILANE, MORE THAN 15' AWAY |
| 701426-09 | LANE CLOSURE, MULTILANE, INTERMITTENT OR MOVING OPER., FOR SPEEDS \geq 45 MPH |
| 701901-08 | TRAFFIC CONTROL DEVICES |

MODEL: Default
 FILE NAME: p:\ultra\paw.bentley.com\PVI\DOT\Documents\DOT Offices\District 1\Projects\Sweeping_Contracts\CAD\Data\Design\Sweeping_Contract2022.dgn

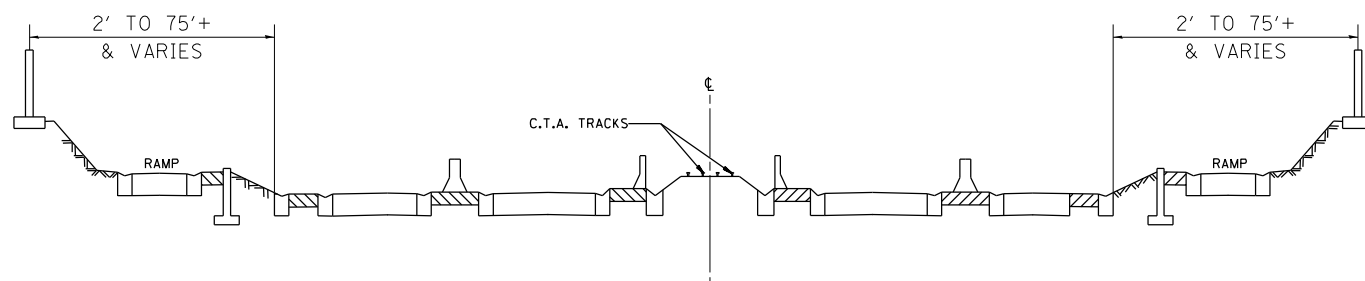
** FAI 290
PAP 342

* COOK AND DU PAGE

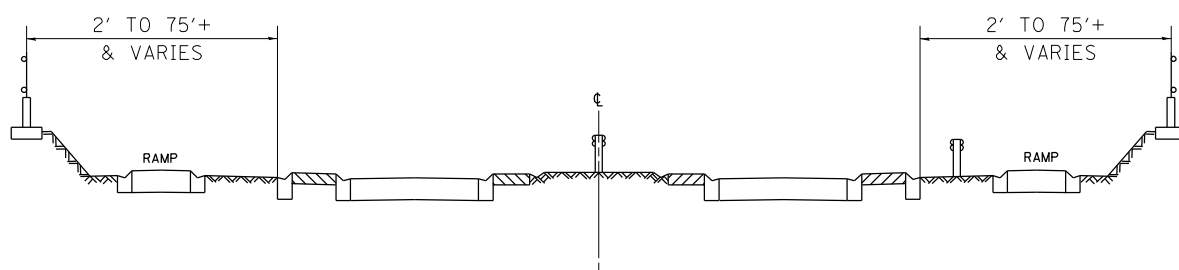
	USER NAME = Rodrigo.Ledezma DESIGNED - DRAWN - PLOT SCALE = 100,0000 ' / in. CHECKED - PLOT DATE = 2/3/2023 DATE -	REVISED - REVISED - REVISED - REVISED -	STATE OF ILLINOIS DEPARTMENT OF TRANSPORTATION	INDEX OF SHEETS AND STATE STANDARDS	SCALE: SHEET OF SHEETS STA. TO STA.	<table border="1" style="width: 100%; border-collapse: collapse;"> <tr> <th style="font-size: small;">F.A. RTE.</th> <th style="font-size: small;">SECTION</th> <th style="font-size: small;">COUNTY</th> <th style="font-size: small;">TOTAL SHEETS</th> <th style="font-size: small;">SHEET NO.</th> </tr> <tr> <td style="text-align: center;">**</td> <td>FAI 290 22 LITTER 3</td> <td style="text-align: center;">*</td> <td style="text-align: center;">5</td> <td style="text-align: center;">2</td> </tr> <tr> <td colspan="3" style="text-align: right;">CONTRACT NO. 62U67</td> <td colspan="2"></td> </tr> </table>	F.A. RTE.	SECTION	COUNTY	TOTAL SHEETS	SHEET NO.	**	FAI 290 22 LITTER 3	*	5	2	CONTRACT NO. 62U67				
F.A. RTE.	SECTION	COUNTY	TOTAL SHEETS	SHEET NO.																	
**	FAI 290 22 LITTER 3	*	5	2																	
CONTRACT NO. 62U67																					
ILLINOIS FED. AID PROJECT																					



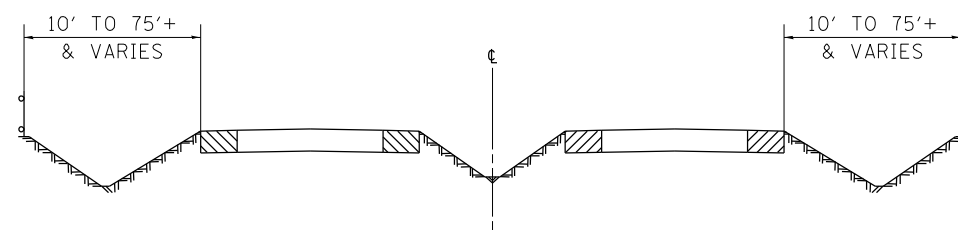
TYPICAL EXPRESSWAY CROSS-SECTION NO. 1



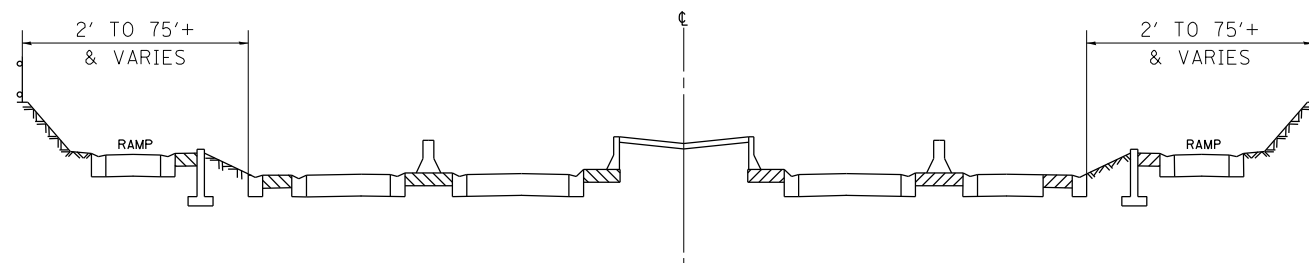
TYPICAL EXPRESSWAY CROSS-SECTION NO. 2



TYPICAL EXPRESSWAY CROSS-SECTION NO. 3



TYPICAL EXPRESSWAY CROSS-SECTION NO. 4



TYPICAL EXPRESSWAY CROSS-SECTION NO. 5

NOTES:

1. SCHEDULE MAY VARY AS DIRECTED BY THE ENGINEER.
2. NO WORK WILL BE ALLOWED DURING ANY LEGAL HOLIDAY PERIOD.
3. ALL SCHEDULES OF ANTICIPATED STARTING DATES SHOWN ARE TENTATIVE AS DETERMINED BY THE DEPARTMENT'S OPERATIONAL NEEDS.
4. NO DAILY CONTRACTOR WORK REQUESTS/ SCHEDULING SHALL BE AUTHORIZED OR APPROVED TO START WHEN IT IS DETERMINED BY THE ENGINEER THAT WEATHER CONDITIONS WILL BE UNFAVORABLE. APPROVAL OF ALL DAILY CONTRACTOR WORK SCHEDULE REQUEST SHALL BE SOLELY DETERMINED BY THE ENGINEER AND OR PROJECT SUPERVISOR.
5. ALL SHOULDER CLOSURES SHALL BE IMMEDIATELY REMOVED DURING ALL ADVERSE WEATHER CONDITIONS **WITHOUT EXCEPTION**, INCLUDING BUT NOT LIMITED TO RAIN, WET ROAD SURFACE (SPRAY FROM TIRES), MIST, DRIZZLE, SLEET, SNOW, FOG AND ANY OTHER CIRCUMSTANCE DETERMINED UNSAFE BY THE ENGINEER. **THE CONTRACTOR SHALL IMPLEMENT THIS CONTRACT REQUIREMENT IMMEDIATELY WITHOUT WAITING FOR DEPARTMENT INSTRUCTIONS.**
6. NO WORK WILL BE ALLOWED ON THE FOLLOWING DATES UNLESS IT IS CONSIDERED AN EMERGENCY, IMMEDIATE HAZARD OR ANY WORK AS DESIGNATED BY THE DEPARTMENT THAT REQUIRES FIRST PRIORITY CORRECTIVE ACTION:

- EASTER HOLIDAY
- MEMORIAL DAY HOLIDAY
- INDEPENDENCE DAY HOLIDAY
- LABOR DAY HOLIDAY
- THANKSGIVING HOLIDAY
- CHRISTMAS/NEW YEAR'S HOLIDAY

SUMMARY OF QUANTITIES

CODE NO.	ITEM	UNIT	TOTAL QUANTITIES	COOK	DUPAGE
				100 % STATE 0044 EXPRESSWAY	100 % STATE 0044 EXPRESSWAY
X0326643	LITTER PICKING	MILE	240	180	60

MODEL: Default
 FILE: \\na11c01\public\paw_bentley.com\PIV\DOT\Documents\DOT Offices\District 11\Projects\Sweeping\Contract\CA0502a\Drawings\Sweeping\Contract2022.dwg

USER NAME = Rodrigo.Ledezma	DESIGNED -	REVISED -
PLOT SCALE = 100,0000' / in.	DRAWN -	REVISED -
PLOT DATE = 12/15/2022	CHECKED -	REVISED -
	DATE -	REVISED -

STATE OF ILLINOIS
DEPARTMENT OF TRANSPORTATION

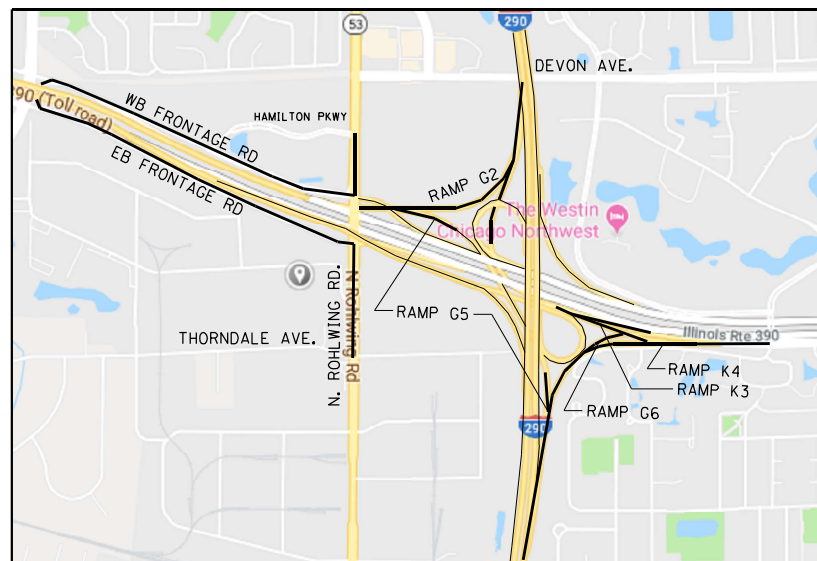
SUMMARY OF QUANTITIES
SCHEDULE OF STARTING DATES

SCALE: SHEET OF SHEETS STA. TO STA.

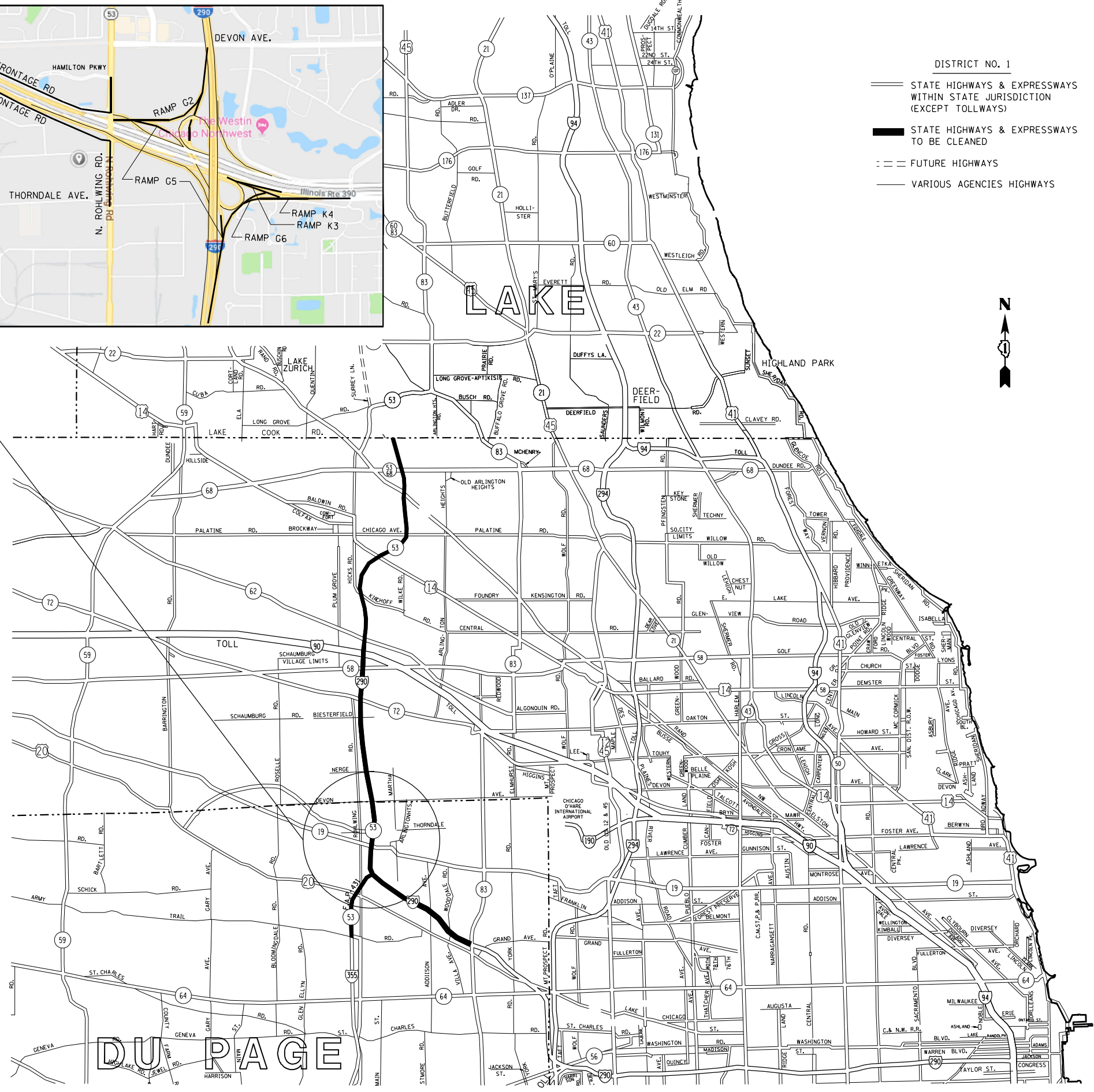
** FAI 290
PAP 342

* COOK AND DU PAGE

F.A. RTE.	SECTION	COUNTY	TOTAL SHEETS	SHEET NO.
**	FAI 290 22 LITTER 3	*	5	3
			CONTRACT NO. 62U67	
			ILLINOIS FED. AID PROJECT	



- DISTRICT NO. 1
- STATE HIGHWAYS & EXPRESSWAYS WITHIN STATE JURISDICTION (EXCEPT TOLLWAYS)
 - STATE HIGHWAYS & EXPRESSWAYS TO BE CLEANED
 - - - FUTURE HIGHWAYS
 - VARIOUS AGENCIES HIGHWAYS



MODEL: Default
 FILE NAME: p:\illdot\paw_benefits\com\PIV\DOT\Documents\DOT Office\District 1\Projects\Sweeping_Contracts\CAD\Drawings\Drawings\SweepingContract2022.dwg
 PROJECT: Sweeping Contracts

USER NAME = Rodrigo.Ledezma	DESIGNED -	REVISED -
	DRAWN -	REVISED -
PLOT SCALE = 100,0000' / in.	CHECKED -	REVISED -
PLOT DATE = 12/15/2022	DATE -	REVISED -

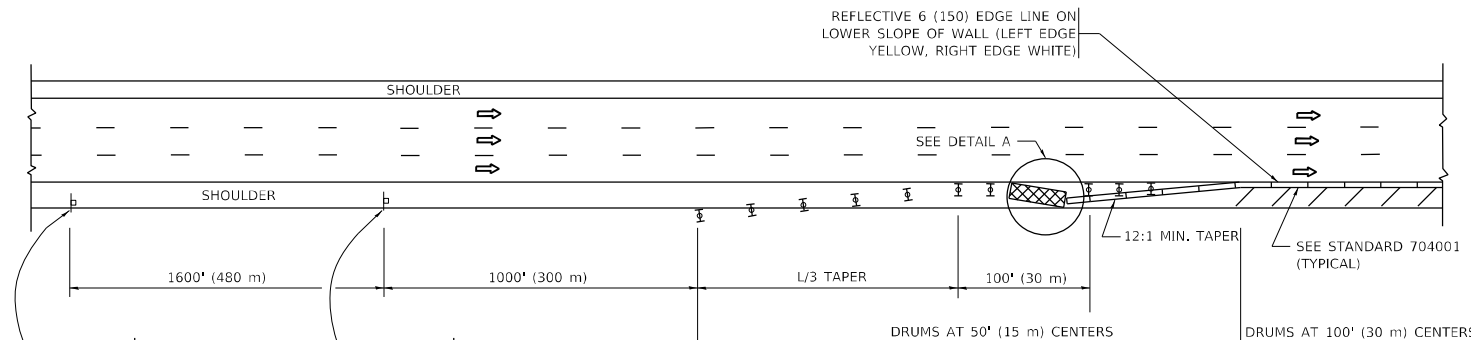
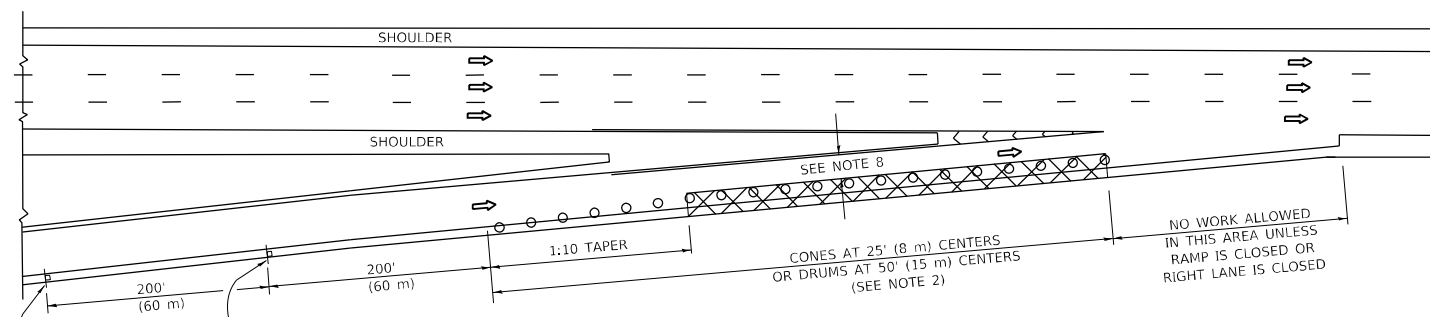
STATE OF ILLINOIS
DEPARTMENT OF TRANSPORTATION

EXPRESSWAY CLEANING LITTER/DEBRIS REMOVAL
I-290 EXTENSION ILL. 53

** FAI 290 PAP 342	* COOK AND DU PAGE		
F.A. RTE.	SECTION	COUNTY	TOTAL SHEETS
** FAI 290 22 LITTER 3		*	5 4
			CONTRACT NO. 62U67
SCALE:		SHEET OF SHEETS	STA. TO STA.
		ILLINOIS	FED. AID PROJECT

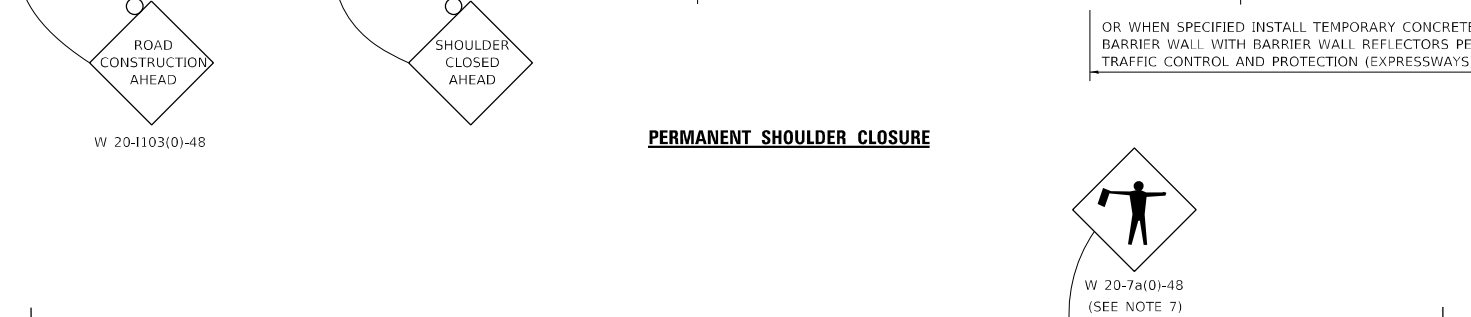
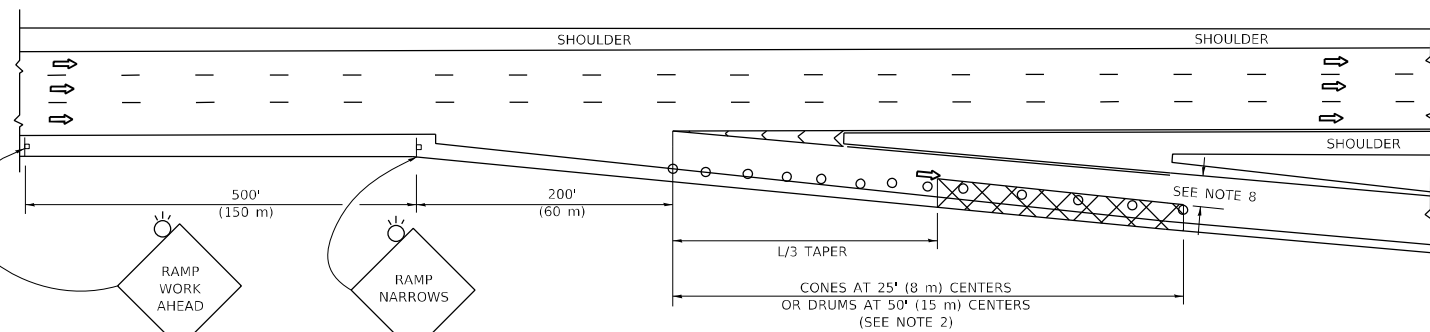
PARTIAL RAMP CLOSURE DETAILS

SHOULDER CLOSURE DETAILS



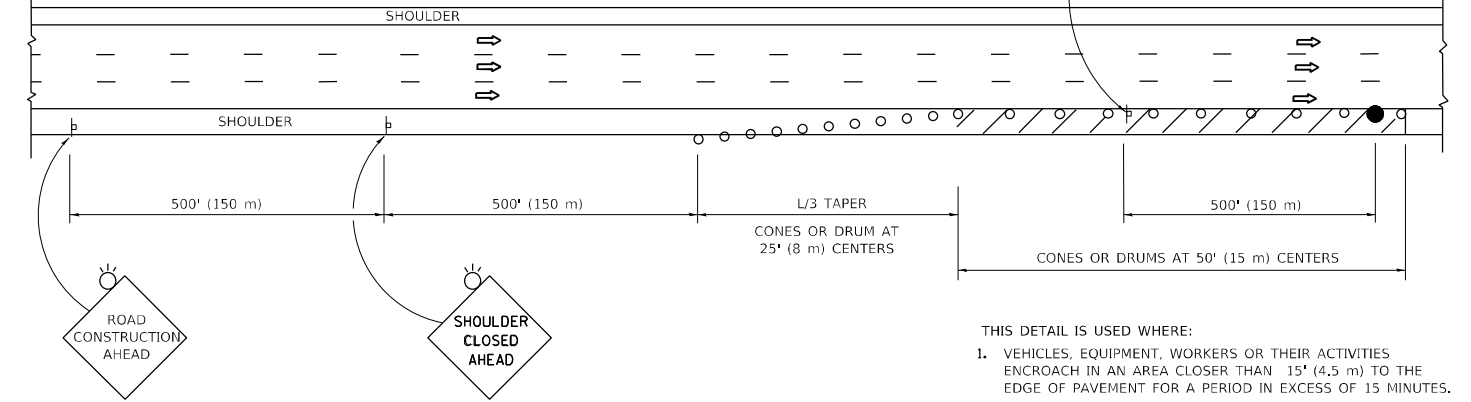
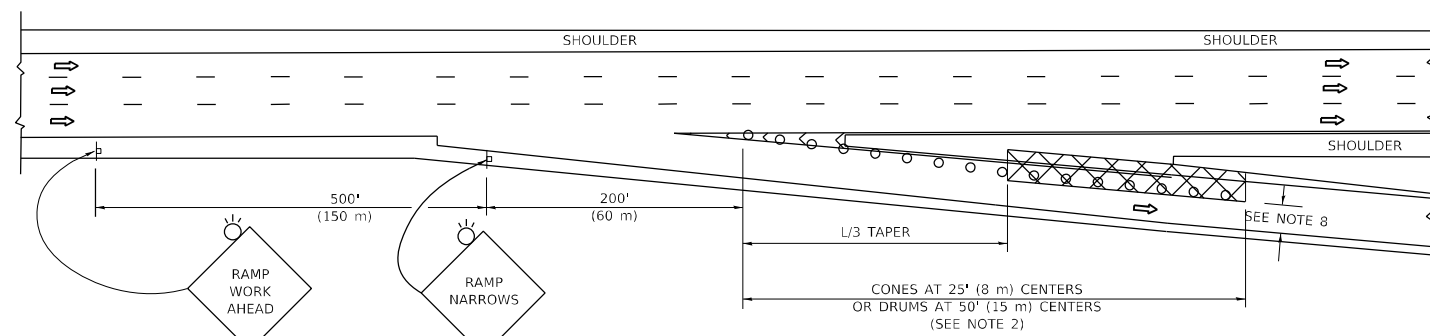
TYPICAL ENTRANCE RAMP

PERMANENT SHOULDER CLOSURE



TYPICAL EXIT RAMP

TEMPORARY SHOULDER CLOSURE



TYPICAL EXIT RAMP



DETAIL "A" IMPACT ATTENUATOR, TEMPORARY (SEE NOTE 5)

SYMBOLS

- ACTIVE WORK AREA
- SIGN ON PORTABLE OR PERMANENT SUPPORT
- FLAGGER WITH CONTROL SIGN
- TYPE II BARRICADE OR DRUM
- CONE, DRUM OR BARRICADE
- IMPACT ATTENUATOR OF TYPE AND TEST LEVEL SPECIFIED

GENERAL NOTES:

1. THE "L" DISTANCE EQUALS:

SPEED LIMIT		FORMULAS	
45 mph (80 km/h)	METRIC	ENGLISH	
OR GREATER:	$L=0.65(W/S)$	$L=(W/S)$	

W = WIDTH OF OFFSET IN FEET (METERS)
S = NORMAL POSTED SPEED MPH (KM/H)
2. TYPE II BARRICADES OR DRUMS ARE REQUIRED FOR ALL NIGHTTIME CLOSURES. TYPE II BARRICADES OR DRUMS WITH MONODIRECTIONAL STEADY BURN LIGHTS ARE REQUIRED FOR DELINEATING OBSTACLES, EXCAVATIONS, OR HAZARDS EXCEEDING 100 FT (30m) IN LENGTH AT NIGHT.
3. ALL SIGNS SHALL BE POST MOUNTED IF THE CLOSURE TIME EXCEEDS FOUR DAYS.
4. FLASHING LIGHTS SHALL BE USED DURING THE HOURS OF DARKNESS AND SHALL BE INSTALLED ABOVE THE FIRST TWO SETS OF SIGNS.

5. THE IMPACT ATTENUATOR, TEMPORARY IS NOT REQUIRED WHEN THE TEMPORARY CONCRETE BARRIER WALL IS PROTECTED BY OR IS TIED INTO THE EXISTING GUARDRAIL. IF OFFSET IS LESS THAN 5 FEET USE NARROW USE TYPE DEVICE TO MEET NCHRP350/MASH.
6. AUTHORIZATION FROM THE DISTRICT'S BUREAU OF TRAFFIC IS REQUIRED FOR ALL FREEWAY CLOSURES.
7. THE FLAGGER AND FLAGGER SIGN ARE REQUIRED AT THE ABOVE WORK SITES WHEN:
 - a. FOUR OR MORE WORK VEHICLES ENTER THE TRAFFIC LANES IN A ONE HOUR PERIOD.
 - b. THE WORK AVTIVITY REQUIRES FREQUENT ENCR OACHMENT INTO THE LANE OPEN TO TRAFFIC.
 THE FLAGGER SHALL BE STATIONED APPROXIMATELY 100' (30 m) TO 200' (60 m) IN ADVANCE OF THE WORKERS.

8. 12' MIN. WIDTH TANGENT SECTION
16' MIN. WIDTH CURVE SECTION.
9. TEMPORARY SHOULDER AND NON-SYSTEM INTERCHANGE PARTIAL RAMP CLOSURES ARE ALLOWED WEEKDAYS BETWEEN 9:00 A.M. AND 3:00 P.M. AND BETWEEN 7:00 P.M. AND 5:00 A.M. OR AS APPROVED BY THE EXPRESSWAY TRAFFIC OPERATIONS ENGINEER. PERMANENT SHOULDER AND PARTIAL RAMP CLOSURES WILL ONLY BE PERMITTED IF CALLED FOR IN THE PLANS OR AS APPROVED BY THE EXPRESSWAY OPERATIONS ENGINEER.

ALL DIMENSIONS ARE IN INCHES (MILLIMETERS) UNLESS OTHERWISE SHOWN.
 ** FAI 290 PAP 342
 ** COOK AND DU PAGE

MODEL: Default
 FILE: \\na16c101\pub\std-raw-beat\fy.com\PIV\DOT\Documents\DOT Office\Director - \Project\Sweeping\Contract2022.dgn

USER NAME = Rodrigo.Ledezma	DESIGNED -	REVISED - S.P.B. 12-09
	DRAWN - D.W.S.	REVISED - M.D. 06-13
PLOT SCALE = 100,0000' / in.	CHECKED -	REVISED - M.D. 01-18
PLOT DATE = 12/15/2022	DATE - 11-96	REVISED - M.D. 10-20

**STATE OF ILLINOIS
DEPARTMENT OF TRANSPORTATION**

**TRAFFIC CONTROL DETAILS FOR FREEWAY
SHOULDER CLOSURES AND PARTIAL RAMP CLOSURES**

SCALE: NONE SHEET 1 OF 1 SHEETS STA. TO STA.

F.A. RTE.	SECTION	COUNTY	TOTAL SHEETS	SHEET NO.
** FAI 290 22 LITTER 3		*	5	5
TC-17		CONTRACT NO. 62U67		
ILLINOIS FED. AID PROJECT				