

STATE OF ILLINOIS
 DEPARTMENT OF TRANSPORTATION
 DIVISION OF HIGHWAYS

**PROPOSED
 HIGHWAY PLANS**

VARIOUS ROUTES
 SECTION D-6 REFLECTOR REPL 23-22
 VARIOUS COUNTIES

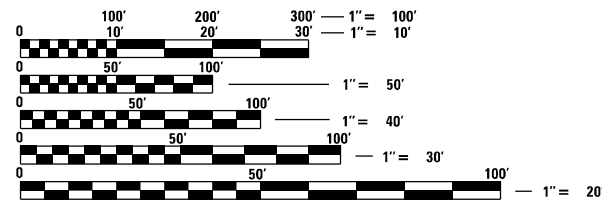
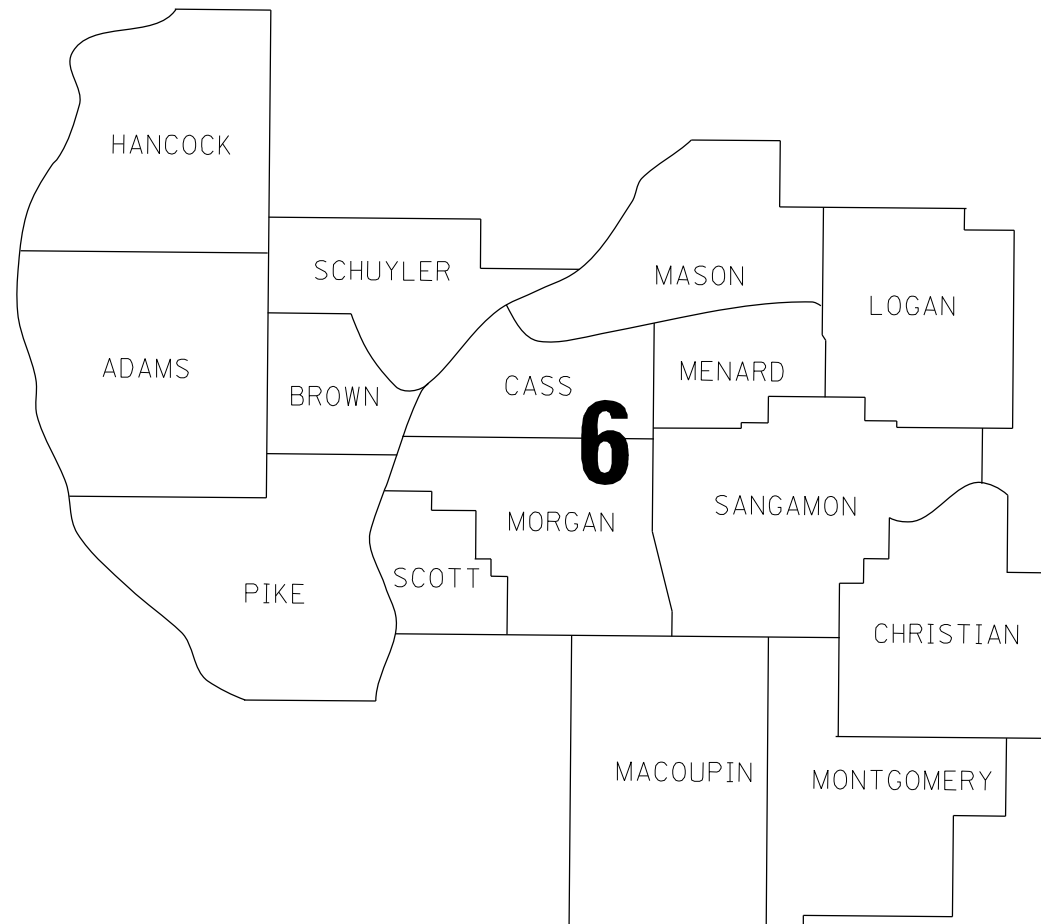
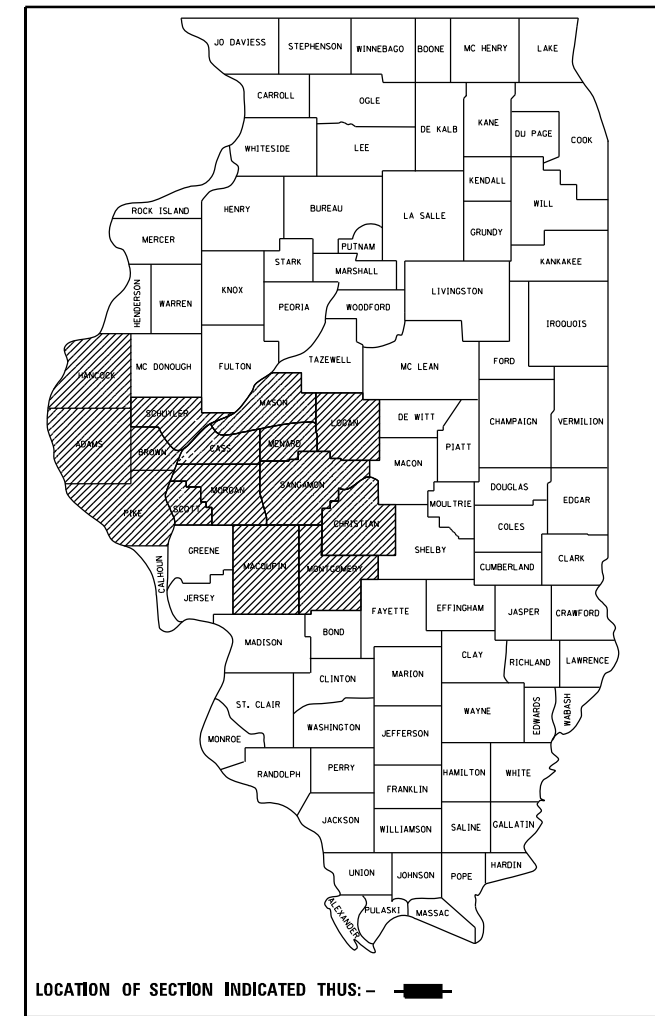
M-60-022-23

FOR INDEX OF SHEETS, SEE SHEET NO. 2

RTE.	SECTION	COUNTY	TOTAL SHEETS	SHEET NO.
VAR.	D6 REFLECTOR REPL	VARIOUS	3	1
		ILLINOIS	CONTRACT NO. 46614	

*D-6 REFLECTOR REPL 23-22

D-XX-XXX-XX



FULL SIZE PLANS HAVE BEEN PREPARED USING STANDARD ENGINEERING SCALES, REDUCED SIZED PLANS WILL NOT CONFORM TO STANDARD SCALES. IN MAKING MEASUREMENTS ON REDUCED PLANS, THE ABOVE SCALES MAY BE USED.

J.U.L.I.E.
 JOINT UTILITY LOCATION INFORMATION FOR EXCAVATION
 1-800-892-0123
 OR 811

PROJECT ENGINEER: JASON JONES (217) 785-5306
 PROJECT MANAGER: ERIC RENT (217) 785-0289

CONTRACT NO. 46614

STATE OF ILLINOIS
 DEPARTMENT OF TRANSPORTATION
 DIVISION OF HIGHWAYS

SUBMITTED December 15 20 22

Jeff P. Meyer
 REGION FOUR ENGINEER

February 3, 2023
Scott A. Etkin
 ENGINEER OF DESIGN AND ENVIRONMENT

February 3, 2023
Stephen M. Smith
 DIRECTOR OF HIGHWAYS PROJECT IMPLEMENTATION

PRINTED BY THE AUTHORITY
 OF THE STATE OF ILLINOIS

INDEX OF SHEETS

- 1 COVER SHEET
- 2 INDEX OF SHEETS & STANDARDS
- 3 SUMMARY OF QUANTITIES

STANDARDS

- 701001-02 OFF-RD OPERATIONS, 2L, 2W, MORE THAN 15' AWAY
- 701006-05 OFF-RD OPERATIONS, 2L, 2W, 15' TO 24" FROM PAVEMENT EDGE
- 701101-05 OFF-RD OPERATIONS, MULTILANE, 15' TO 24" FROM PAVEMENT EDGE
- 701106-02 OFF-RD OPERATIONS, MULTILANE, MORE THAN 15' AWAY
- 701201-05 LANE CLOSURE, 2L, 2W, DAY ONLY, FOR SPEEDS > 45 MPH
- 701301-04 LANE CLOSURE, 2L, 2W, SHORT TIME OPERATIONS
- 701400-11 APPROACH TO LANE CLOSURE, FREEWAY/EXPRESSWAY
- 701406-13 LANE CLOSURE, FREEWAY/EXPRESSWAY, DAY OPERATIONS ONLY
- 701411-09 LANE CLOSURE, MULTILANE, AT ENTRANCE OR EXIT RAMP, FOR SPEEDS > 45 MPH
- 701421-08 LANE CLOSURE, MULTILANE, DAY OPERATIONS ONLY, FOR SPEEDS > 45 MPH TO 55 MPH
- 701422-10 LANE CLOSURE, MULTILANE, FOR SPEEDS > 45 MPH TO 55 MPH
- 701426-09 LANE CLOSURE, MULTILANE, INTERMITTANT OR MOVING OPERATION, FOR SPEEDS > 45 MPH
- 701427-05 LANE CLOSURE, MULTILANE, INTERMITTANT OR MOVING OPERATION, FOR SPEEDS < 40 MPH
- 701428-01 TRAFFIC CONTROL SETUP AND REMOVAL FREEWAY/EXPRESSWAY
- 701456-05 PARTIAL EXIT RAMP CLOSURE FREEWAY/EXPRESSWAY
- 701501-06 URBAN LANE CLOSURE, 2L, 2W, UNDIVIDED
- 701502-09 URBAN LANE CLOSURE 2L, 2W, WITH BIDIRECTIONAL LEFT TURN LANE
- 701601-09 URBAN LANE CLOSURE, MULTILANE, 1W OR 2W WITH NONTRAVERSABLE MEDIAN
- 701602-10 URBAN LANE CLOSURE, MULTILANE, 2W WITH BIDIRECTIONAL LEFT TURN LANE
- 701606-10 URBAN SINGLE LANE CLOSURE, MULTILANE, 2W WITH MOUNTABLE MEDIAN
- 701701-10 URBAN LANE CLOSURE, MULTILANE INTERSECTION
- 701901-08 TRAFFIC CONTROL DEVICES
- 781001-04 TYPICAL APPLICATIONS RAISED REFLECTIVE PAVEMENT MARKERS

REV. - MS

*D-6 REFLECTOR REPL 23-22

FILE NAME =	USER NAME = Eric.Rent	DESIGNED -	REVISED -	STATE OF ILLINOIS DEPARTMENT OF TRANSPORTATION	GENERAL NOTES	RTE.	SECTION	COUNTY	TOTAL SHEETS	SHEET NO.	
S:\CONTRMAINT_CAD\46614 - D 6 Reflector	Rep1 23-22\46614 Plans\sheet 2-46614 GenNotes	DRAWN -	REVISED -			VAR.	*	VARIOUS	3	2	
Default	PLOT SCALE = 2.0000' / in.	CHECKED -	REVISED -			CONTRACT NO. 46614					
	PLOT DATE = 12/9/2022	DATE -	REVISED -			SCALE:	SHEET OF SHEETS	STA. TO STA.	ILLINOIS FED. AID PROJECT		

0021

CODE NUMBER	ITEM	UNIT OF MEASURE	100% STATE TOTAL QUANTITY
78100100	RAISED REFLECTIVE PAVEMENT MARKER	EACH	10000
78100300	REPLACEMENT REFLECTOR	EACH	8500
78300200	RAISED REFLECTIVE PAVEMENT MARKER REMOVAL	EACH	6000

REV. - MS

•D-6 REFLECTOR REPL 23-22

FILE NAME =	USER NAME = Eric.Rent	DESIGNED -	REVISED -	STATE OF ILLINOIS DEPARTMENT OF TRANSPORTATION	SUMMARY OF QUANTITIES				RTE.	SECTION	COUNTY	TOTAL SHEETS	SHEET NO.
S:\CONTRMAINT_CAD\46614 - D 6 Reflector	Rep1 23-22\46614 Plans\sheet 3-46614 S00.dgn	DRAWN -	REVISED -						VAR.	*	VARIOUS	3	3
Default	PLOT SCALE = 2.0000' / in.	CHECKED -	REVISED -		CONTRACT NO. 46614								
	PLOT DATE = 12/9/2022	DATE -	REVISED -		SCALE:	SHEET	OF	SHEETS	STA.	TO	STA.	ILLINOIS FED. AID PROJECT	