

INDEX OF SHEETS

03-10-2023 LETTING ITEM 154

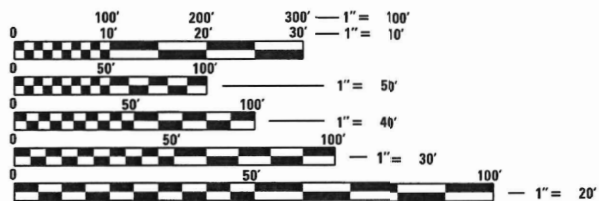
- 1 COVER SHEET
- 2 GENERAL NOTES AND COMMITMENTS
- 3-6 SUMMARY OF QUANTITIES
- 7-8 TYPICAL SECTIONS
- 9-10 SCHEDULE OF QUANTITIES
- 11 REMOVAL PLAN
- 12-13 PLAN AND PROFILE SHEETS
- 14-17 RIGHT-OF-WAY PLAT
- 18 GEOMETRIC CENTER PAVEMENT DETAIL
- 19-20 PAVEMENT MARKING & SIGNAGE SHEETS
- 21-24 TRAFFIC SIGNAL SHEETS
- 25 CROSS SECTIONS

IDOT HIGHWAY STANDARDS

- 000001-08 STANDARD SYMBOLS, ABBREVIATIONS AND PATTERNS
- 001001-02 AREAS OF REINFORCEMENT BARS
- 001006 DECIMAL OF AN INCH AND OF A FOOT
- 280001-07 TEMPORARY EROSION CONTROL SYSTEMS
- 701101-05 OFF-RD OPERATIONS, MULTILANE, 15' TO 24" FROM PAVEMENT EDGE
- 701426-09 LANE CLOSURE, MULTILANE, INTERMITTENT OR MOVING OPER., FOR SPEEDS ≥ 45 MPH
- 701427-05 LANE CLOSURE, MULTILANE, INTERMITTENT OR MOVING OPER., FOR SPEEDS ≤ 40 MPH
- 701601-09 URBAN LANE CLOSURE, MULTILANE, 1W OR 2W WITH NONTRAVERSABLE MEDIAN
- 701602-10 URBAN LANE CLOSURE, MULTILANE, 2W WITH BIDIRECTIONAL LEFT TURN LANE
- 701701-10 URBAN LANE CLOSURE, MULTILANE INTERSECTION
- 701801-06 SIDEWALK CORNER OR CROSSWALK CLOSURE
- 701901-08 TRAFFIC CONTROL DEVICES
- 720001-01 SIGN PANEL MOUNTING DETAILS
- 720006-04 SIGN PANEL ERECTION DETAILS
- 720016-04 MAST ARM MOUNTED STREET NAME SIGNS
- 728001-01 TELESCOPING STEEL SIGN SUPPORT
- 780001-05 TYPICAL PAVEMENT MARKINGS
- 781001-04 TYPICAL APPLICATIONS RAISED REFLECTIVE PAVEMENT MARKERS
- 838001-01 BREAKAWAY DEVICES
- 857001-01 STANDARD PHASE DESIGNATION DIAGRAMS AND PHASE SEQUENCES
- 873001-02 TRAFFIC SIGNAL GROUNDING & BONDING
- 877002-04 STEEL MAST ARM ASSEMBLY AND POLE 56' THROUGH 75'
- 878001-11 CONCRETE FOUNDATION DETAILS
- 880006-01 TRAFFIC SIGNAL MOUNTING DETAILS
- 886001-01 DETECTOR LOOP INSTALLATIONS
- 886006-01 TYPICAL LAYOUT FOR DETECTION LOOPS

DESIGN DESIGNATION

ROADWAY CLASSIFICATION: MINOR ARTERIAL
DESIGN SPEED: 40(N LEG)/45(S LEG) MPH
CURRENT ADT (2020): 13,600 VPD
DESIGN YEAR ADT (2040): 16,600 VPD



FULL SIZE PLANS HAVE BEEN PREPARED USING STANDARD ENGINEERING SCALES. REDUCED SIZED PLANS WILL NOT CONFORM TO STANDARD SCALES. IN MAKING MEASUREMENTS ON REDUCED PLANS, THE ABOVE SCALES MAY BE USED.

J.U.L.I.E.
 JOINT UTILITY LOCATION INFORMATION FOR EXCAVATORS
 1-800-892-0123
 OR 811

CONTRACT NO: 97788



PLANS PREPARED BY:
 4940 Old Collinsville Road
 Swansea, Illinois 62226
 Tel: 618.624.4488
 www.twm-inc.com
 Illinois - Missouri - Tennessee

Illinois Professional Design Firm
 No. 184-001220
 License Expires: 4/30/2023

STATE OF ILLINOIS

DEPARTMENT OF TRANSPORTATION

PROPOSED HIGHWAY PLANS

CMAQ FUNDS

ST. CLAIR COUNTY DEPARTMENT OF ROADS AND BRIDGES

FAU 9256/CH46 (FRANK SCOTT PARKWAY WEST)

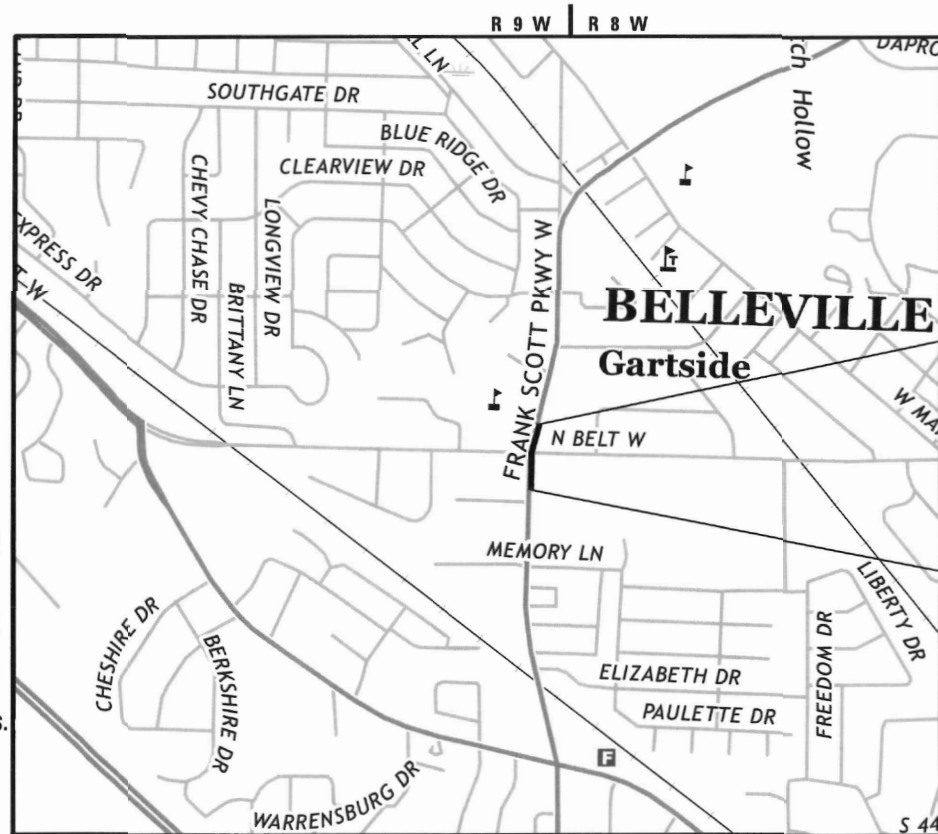
SECTION 18-00290-11-TL

PROJECT NO. AB9N(513)

INTERSECTION IMPROVEMENTS

ST. CLAIR COUNTY

C-98-009-20



LOCATION MAP

GROSS LENGTH = 1236.77 FT. = 0.234 MILE
 NET LENGTH = 1236.77 FT. = 0.234 MILE

BEGIN PROJECT
 STA. 35+80.39

END PROJECT
 STA. 48+17.16



09-09-2022
 Joshua W. Stein, P.E.
 LICENSE NO. 062-062775
 EXPIRATION DATE 11-30-2023

FAU RTE.	SECTION	COUNTY	TOTAL SHEETS	SHEET NO.
9256	18-00290-11-TL	ST. CLAIR	25	1
		ILLINOIS	CONTRACT NO. 97788	



LOCATION OF SECTION INDICATED THIS: - [Symbol] -

STATE OF ILLINOIS
 DEPARTMENT OF TRANSPORTATION

APPROVED 9/16/2022
Abner
 COUNTY ENGINEER
 ST. CLAIR COUNTY HIGHWAY DEPARTMENT

APPROVED 9-12-2022
Patty Hugon
 MAYOR
 CITY OF BELLEVILLE

PASSED 12-21-2022
[Signature]
 DISTRICT 8 ENGINEER
 LOCAL ROADS & STREETS

RELEASED FOR BID BASED ON LIMITED REVIEW
12-21-2022
[Signature]
 REGION FIVE ENGINEER

PRINTED BY THE AUTHORITY OF THE STATE OF ILLINOIS

GENERAL NOTES

- ALL ELEVATIONS SHOWN ON THE PLANS ARE BASED ON U.S.G.S. MEAN SEA LEVEL DATUM.
- HORIZONTAL CONTROL IS BASED ON THE STATE PLANE COORDINATES SYSTEM.
- IT IS NOT WARRANTED THAT THIS DOCUMENT CONTAINS COMPLETE INFORMATION REGARDING EASEMENTS, RESERVATIONS, RESTRICTIONS, RIGHT-OF-WAYS, BUILDING LINE SETBACKS, AND OTHER ENCUMBRANCES. FOR COMPLETE INFORMATION, A TITLE OPINION OR COMMITMENT FOR TITLE INSURANCE SHOULD BE OBTAINED AND THOROUGHLY REVIEWED.
- THE CONTRACTOR SHALL VERIFY ALL DIMENSIONS AND CONDITIONS IN THE FIELD PRIOR TO ORDERING OF MATERIALS AND COMMENCING CONSTRUCTION.
- THE CONTRACTOR SHALL STAGE ALL WORK IN SUCH A WAY AS TO MAINTAIN INGRESS AND EGRESS TO ALL ABUTTING PROPERTIES.
- THE CONTRACTOR SHALL CONFINE ALL OPERATIONS TO THE CONSTRUCTION LIMITS LINE SHOWN ON THE PLANS. ANY AREA DISTURBED BEYOND THESE LIMITS SHALL BE RESTORED TO ITS ORIGINAL CONDITION AT THE CONTRACTOR'S EXPENSE.
- THE CONTRACTOR SHALL NOTIFY THE ILLINOIS DEPARTMENT OF TRANSPORTATION, THE ST. CLAIR COUNTY DEPARTMENT OF ROADS AND BRIDGES, AND THE CITY OF BELLEVILLE AT LEAST TWO WEEKS PRIOR TO IMPLEMENTING ANY TRAFFIC CONTROL.

UTILITIES

- EXISTING UNDERGROUND AND ABOVE-GRADE UTILITY STRUCTURES AND FACILITIES HAVE BEEN PLOTTED ON THESE PLANS BASED ON TOPOGRAPHIC SURVEYS CONDUCTED DURING DESIGN. THE LOCATIONS OF THESE FEATURES MUST BE CONSIDERED APPROXIMATE ONLY. IN ADDITION, THERE MAY BE OTHER FACILITIES WHICH DID NOT EXIST OR WERE NOT KNOWN DURING PREPARATION OF THESE DRAWINGS. IT IS THE RESPONSIBILITY OF THE CONTRACTOR TO HAVE ALL EXISTING FACILITIES LOCATED IN THE FIELD PRIOR TO ANY CONSTRUCTION ACTIVITIES AND TO PROTECT ALL SUCH FACILITIES THROUGHOUT CONSTRUCTION.
- UNLESS NOTED OTHERWISE, THE TYPE, SIZE, DEPTH, AND LOCATION OF EXISTING GAS MAINS, SEWERS, ELECTRIC POWER LINES, TELEPHONE LINES AND OTHER FACILITIES AS DELINEATED ON THE PLANS HAVE BEEN DETERMINED BY REVIEW OF AVAILABLE EXISTING "AS BUILTS" OR RECORD DRAWINGS, FIELD SURVEY ON J.U.L.I.E. MARKED UTILITIES, OR FIELD SURVEY OF ABOVE GROUND SUBSURFACE UTILITY FEATURES. THEREFORE THEIR EXACT LOCATION, SIZE AND FUNCTION MUST BE CONSIDERED APPROXIMATE. THE EXISTING LOCATION OF ALL UNDERGROUND ELECTRIC, TELEPHONE, CABLE, SANITARY SEWER LINES AND GAS MAINS HAVE BEEN APPROXIMATED AT MINIMUM DEPTHS OF 30", 24", 24", 30", AND 36", RESPECTIVELY.
- ANY FACILITIES OR APPURTENANCES, WHICH ARE THE PROPERTY OF ANY PUBLIC UTILITY LOCATED WITHIN THE LIMITS OF CONSTRUCTION, SHALL BE RELOCATED OR ADJUSTED BY THEIR RESPECTIVE OWNERS. THE CONTRACTOR SHALL NOTIFY AND COOPERATE WITH THE OWNERS OF ANY SUCH FACILITY IN THEIR REMOVAL/ADJUSTMENTS AND ADJUST HIS/HER OPERATIONS IN ORDER THAT, THE UTILITY'S OPERATIONS AND THE CONSTRUCTION OF THE PROJECT MAY PROGRESS IN A REASONABLE MANNER.
- UTILITIES KNOWN TO HAVE FACILITIES WITHIN THE PROJECT AREA:
 AMEREN IP
 ADB COMPANIES
 AT&T
 CHARTER COMMUNICATIONS
 CITY OF BELLEVILLE
 ILLINOIS AMERICAN WATER
 MCI
 ST. CLAIR COUNTY HIGHWAY DEPARTMENT
 ST. CLAIR TOWNSHIP

 THE FOLLOWING FACILITIES ARE NOT MEMBERS OF J.U.L.I.E.:
 IDOT
- IDOT UTILITY NOTE: THE DEPARTMENT IS NOT A MEMBER OF J.U.L.I.E. AND DOES NOT LOCATE ITS OWN FACILITIES (SUCH AS UNDERGROUND CONDUIT AND/OR CABLE FOR TRAFFIC SIGNALS OR HIGHWAY LIGHTS). THE APPLICANT, AT HIS/HER OWN EXPENSE, MUST OBTAIN THE SERVICES OF A QUALIFIED ELECTRICAL CONTRACTOR TO LOCATE SUCH STATE OWNED FACILITIES.

DRAINAGE AND EROSION CONTROL

- IT SHALL BE THE RESPONSIBILITY OF THE CONTRACTOR TO MAINTAIN POSITIVE DRAINAGE DURING VARIOUS STAGES OF CONSTRUCTION. THIS INCLUDES ALL LABOR, EQUIPMENT AND MATERIALS USED BEYOND WHAT IS SPECIFIED IN THE PLANS. NECESSARY ITEMS SUCH AS TEMPORARY DITCHES OR PIPES WILL NOT BE PAID FOR SEPARATELY AND SHALL BE CONSIDERED INCLUDED IN THE COST OF THE CONTRACT.
- EROSION AND SEDIMENT CONTROL SHALL BE PERFORMED IN ACCORDANCE WITH SECTION 280 OF THE STANDARD SPECIFICATIONS.
- IT IS THE CONTRACTOR'S RESPONSIBILITY TO INSURE THAT ALL EROSION AND SEDIMENT DOES NOT MIGRATE OFF SITE. IF UNEXPECTED EROSION OR SEDIMENT DOES MIGRATE OFF SITE OR IF EROSION CONTROL DEVICES BECOME DAMAGED, THE CONTRACTOR SHALL PROVIDE SUFFICIENT MEASURES TO REPAIR OR REPLACE DEVICES TO INSURE OFF-SITE DAMAGE DOES NOT OCCUR. ANY SEDIMENT OR EROSION DAMAGE WHICH OCCURS OFF-SITE SHALL BE REPAIRED BY THE CONTRACTOR AT HIS/HER EXPENSE.

TRAFFIC CONTROL

- ALL CONSTRUCTION SIGNS SHALL BE 48" FLUORESCENT ORANGE.
- ANY EXCAVATION ADJACENT TO THE EDGE OF PAVEMENT SHALL BE PROTECTED WITH EXTENDED LEG BARRIERS AND APPROPRIATE LIGHTS.

SIGNS

- SIGNS NOT RESURRECTED WILL REVERT BACK TO THE RESPONSIBLE PARTY, WHETHER IT BE THE ST. CLAIR COUNTY DEPARTMENT OF ROADS AND BRIDGES, THE CITY OF BELLEVILLE, OR THE ILLINOIS DEPARTMENT OF TRANSPORTATION. ANY DAMAGE TO EXISTING SIGNS IN STORAGE SHALL BE THE RESPONSIBILITY OF THE CONTRACTOR. ENGINEER WILL CONTACT APPROPRIATE AGENCY FOR SIGN RETURN. FOR THE ILLINOIS DEPARTMENT OF TRANSPORTATION SIGNS, CONTACT JEAN SLAPE AT 618/394-2189.

HMA MIXTURE REQUIREMENTS

LOCATION(S): FAU 9256 (FRANK SCOTT PARKWAY WEST)			
MIXTURE USE(S):	FULL DEPTH, SURFACE	FULL DEPTH, TOP BINDER	FULL DEPTH, LOWER BINDER
PG:	SBS PG 70-22	SBS PG 70-22	PG 64-22
DESIGN AIR VOIDS:	4.0% @ Ndes=70	4.0% @ Ndes=70	4.0% @ Ndes=70
MIXTURE COMPOSITION:	IL 9.5	IL 19.0	IL 19.0
FRICTION AGGREGATE:	MIXTURE "D"		
MIXTURE WEIGHT:	112 LB/ SQ YD/ IN	112 LB/ SQ YD/ IN	112 LB/ SQ YD/ IN
QUALITY MANAGEMENT PROGRAM:	QC/QA	QC/QA	QC/QA
SUBLOT SIZE:	N/A	N/A	N/A
MATERIAL TRANSFER DEVICE (REQUIRED?)	NO	NO	NO

COMMITMENTS

NONE

MODEL: D:\64bit... FILE NAME: P:\2018110223\4_CADD... DWG: 4.7_Tran\CADD_Sheets\180223-4-ct-cenmose.dgn



USER NAME = mschwierjohn	DESIGNED - MLS	REVISED -
PLOT SCALE = 2,0000' / in.	DRAWN - DL	REVISED -
PLOT DATE = 8/24/2022	CHECKED - JWS	REVISED -
	DATE - AUG 2022	REVISED -



**ST. CLAIR COUNTY
DEPARTMENT OF ROADS & BRIDGES**

GENERAL NOTES AND COMMITMENTS

SCALE: NTS SHEET 1 OF 1 SHEETS STA. TO STA.

F.A.U. ROUTE	SECTION	COUNTY	TOTAL SHEETS	SHEET NO.
9256	18-00290-11-TL	ST. CLAIR	25	2
ILLINOIS FED. AID PROJECT			CONTRACT NO. 97788	

CONSTRUCTION CODE	
FAU 9256 / CH46 (FRANK SCOTT PARKWAY) SOUTH LEG ROADWAY STA. 35+80.39 - STA. 41+43.89 ST. CLAIR COUNTY 20% COUNTY / 80% FED 0021 URBAN	FAU 9256 / CH46 (FRANK SCOTT PARKWAY) NORTH LEG ROADWAY STA. 41+43.89 - STA. 48+17.16 CITY OF BELLEVILLE 20% CITY / 80% FED 0021 URBAN

CODE NO.	PAY ITEM	UNIT	TOTAL QUANTITY	0021 URBAN	0021 URBAN
20200100	EARTH EXCAVATION	CU YD	65	65	0
31100300	SUBBASE GRANULAR MATERIAL, TYPE A 4"	SQ YD	229	229	0
40600275	BITUMINOUS MATERIALS (PRIME COAT)	POUND	515	515	0
40600290	BITUMINOUS MATERIALS (TACK COAT)	POUND	52	52	0
40701901	HOT-MIX ASPHALT PAVEMENT (FULL-DEPTH), 11"	SQ YD	229	229	0
Δ 66900200	NON-SPECIAL WASTE DISPOSAL	CU YD	142	142	0
Δ 66900530	SOIL DISPOSAL ANALYSIS	EACH	1	1	0
Δ 66901001	REGULATED SUBSTANCES PRE-CONSTRUCTION PLAN	L SUM	1	1	0
Δ 66901003	REGULATED SUBSTANCES FINAL CONSTRUCTION REPORT	L SUM	1	1	0
Δ 66901006	REGULATED SUBSTANCES MONITORING	CAL DA	3	3	0
67100100	MOBILIZATION	L SUM	1	0.75	0.25
Δ 72000100	SIGN PANEL - TYPE 1	SQ FT	40.50	24.50	16.00
Δ 72800100	TELESCOPING STEEL SIGN SUPPORT	FOOT	48	32	16
Δ 78000100	THERMOPLASTIC PAVEMENT MARKING - LETTERS AND SYMBOLS	SQ FT	187	94	93

Δ SPECIALTY ITEMS

MODEL D:\64\11
FILE NAME: P:\2018110223\4_CADD - DWG\4.7_Tran\CADD_Sheet1180223-pl-500.dgn



USER NAME = mschwierjohn	DESIGNED - MLS	REVISED -
PLOT SCALE = 2.0000' / in.	DRAWN - DL	REVISED -
PLOT DATE = 1/10/2023	CHECKED - JWS	REVISED -
	DATE - AUG 2022	REVISED -



**ST. CLAIR COUNTY
DEPARTMENT OF ROADS & BRIDGES**

SUMMARY OF QUANTITIES			
SCALE: NTS	SHEET 1	OF 3 SHEETS	STA. TO STA.

F.A.U. ROUTE	SECTION	COUNTY	TOTAL SHEETS	SHEET NO.
9256	18-00290-11-TL	ST. CLAIR	25	3
				CONTRACT NO. 97788
				ILLINOIS FED. AID PROJECT

CONSTRUCTION CODE	
FAU 9256 / CH46 (FRANK SCOTT PARKWAY) SOUTH LEG ROADWAY STA. 35+80.39 - STA. 41+43.89 ST. CLAIR COUNTY 20% COUNTY / 80% FED	FAU 9256 / CH46 (FRANK SCOTT PARKWAY) NORTH LEG ROADWAY STA. 41+43.89 - STA. 48+17.16 CITY OF BELLEVILLE 20% CITY / 80% FED
0021	0021

CODE NO.	PAY ITEM	UNIT	TOTAL QUANTITY		
Δ 78000200	THERMOPLASTIC PAVEMENT MARKING - LINE 4"	FOOT	3071	1664	1407
Δ 78000600	THERMOPLASTIC PAVEMENT MARKING - LINE 12"	FOOT	803	401	402
Δ 78000650	THERMOPLASTIC PAVEMENT MARKING - LINE 24"	FOOT	207	102	105
78300202	PAVEMENT MARKING REMOVAL - WATER BLASTING	SQ FT	1904	910	994
Δ 80300100	LOCATING UNDERGROUND CABLE	FOOT	545	212	333
Δ 81028320	UNDERGROUND CONDUIT, PVC, 1" DIA.	FOOT	35	16	19
Δ 81028370	UNDERGROUND CONDUIT, PVC, 3" DIA.	FOOT	5	0	5
Δ 87301215	ELECTRIC CABLE IN CONDUIT, SIGNAL NO. 14 2C	FOOT	106	0	106
Δ 87301225	ELECTRIC CABLE IN CONDUIT, SIGNAL NO. 14 3C	FOOT	126	0	126
Δ 87301245	ELECTRIC CABLE IN CONDUIT, SIGNAL NO. 14 5C	FOOT	1660	985	675
Δ 87301305	ELECTRIC CABLE IN CONDUIT, LEAD-IN, NO. 14 1 PAIR	FOOT	459	144	315
Δ 87301900	ELECTRIC CABLE IN CONDUIT, EQUIPMENT GROUNDING CONDUCTOR, NO 6 1C	FOOT	22	0	22
Δ 87700400	STEEL MAST ARM ASSEMBLY AND POLE, 60 FT.	EACH	1	0	1
Δ 87800420	CONCRETE FOUNDATION, TYPE E 42-INCH DIAMETER	FOOT	21	0	21

Δ SPECIALTY ITEMS

MODEL: D:\64bit... FILE NAME: P:\2018110223\4_CADD - DWG\4.7_TrafficADD_Sheet1180223-pl-500.dgn



USER NAME = mschwierjohn	DESIGNED - MLS	REVISED -
PLOT SCALE = 2.0000' / in.	DRAWN - DL	REVISED -
PLOT DATE = 1/6/2023	CHECKED - JWS	REVISED -
	DATE - AUG 2022	REVISED -



**ST. CLAIR COUNTY
DEPARTMENT OF ROADS & BRIDGES**

SUMMARY OF QUANTITIES	
SCALE: NTS	SHEET 2 OF 4 SHEETS
STA.	TO STA.

F.A.U. ROUTE	SECTION	COUNTY	TOTAL SHEETS	SHEET NO.
9256	18-00290-11-TL	ST. CLAIR	25	4
CONTRACT NO. 97788			ILLINOIS FED. AID PROJECT	

CONSTRUCTION CODE	
FAU 9256 / CH46 (FRANK SCOTT PARKWAY) SOUTH LEG ROADWAY STA. 35+80.39 - STA. 41+43.89 ST. CLAIR COUNTY 20% COUNTY / 80% FED 0021	FAU 9256 / CH46 (FRANK SCOTT PARKWAY) NORTH LEG ROADWAY STA. 41+43.89 - STA. 48+17.16 CITY OF BELLEVILLE 20% CITY / 80% FED 0021

CODE NO.	PAY ITEM	UNIT	TOTAL QUANTITY		
Δ 88040070	SIGNAL HEAD, POLYCARBONATE, LED, 1-FACE, 3-SECTION, BRACKET MOUNTED	EACH	4	1	3
Δ 88040090	SIGNAL HEAD, POLYCARBONATE, LED, 1-FACE, 3-SECTION, MAST ARM MOUNTED	EACH	5	2	3
Δ 88200300	TRAFFIC SIGNAL BACKPLATE, PLASTIC	EACH	5	2	3
Δ 88500520	INDUCTION LOOP DETECTOR AMPLIFIER WITH CALL DELAY AND CALL CARRY-OVER, DIGITAL DESIGN	EACH	2	1	1
Δ 88600100	DETECTOR LOOP, TYPE 1	FOOT	381	189	192
Δ 89500200	RELOCATE EXISTING PEDESTRIAN SIGNAL HEAD	EACH	2	0	2
Δ 89501420	RELOCATE EXISTING EMERGENCY VEHICLE PRIORITY SYSTEM, COMPLETE	EACH	1	0	1
Δ 89502200	MODIFY EXISTING CONTROLLER	EACH	1	0.5	0.5
Δ 89502300	REMOVE ELECTRIC CABLE FROM CONDUIT	FOOT	807	604	203
Δ 89502375	REMOVE EXISTING TRAFFIC SIGNAL EQUIPMENT	EACH	1	0	1
Δ 89502385	REMOVE EXISTING CONCRETE FOUNDATION	EACH	1	0	1
Δ X0324085	EMERGENCY VEHICLE PRIORITY SYSTEM LINE SENSOR CABLE, NO. 20 3/C	FOOT	108	0	108
X0326657	RELOCATE SIGN, SPECIAL	EACH	1	0	1
Δ X2600012	REMOVE AND RELOCATE SIGN PANEL AND POLE ASSEMBLY	EACH	1	0	1

Δ SPECIALTY ITEMS

MODEL Dwg.dwg
FILE NAME: P:\2018\180223\4_CADD - DWG\4.7_TrafficCADD_Sheet180223-pl-500.dgn



USER NAME = mschwierjohn	DESIGNED - MLS	REVISED -
PLOT SCALE = 2.0000' / in.	DRAWN - DL	REVISED -
PLOT DATE = 1/6/2023	CHECKED - JWS	REVISED -
	DATE - AUG 2022	REVISED -



**ST. CLAIR COUNTY
DEPARTMENT OF ROADS & BRIDGES**

SUMMARY OF QUANTITIES			
SCALE: NTS	SHEET 3 OF 4 SHEETS	STA.	TO STA.

F.A.U. ROUTE	SECTION	COUNTY	TOTAL SHEETS	SHEET NO.
9256	18-00290-11-TL	ST. CLAIR	25	5
CONTRACT NO. 97788			ILLINOIS FED. AID PROJECT	

CODE NO.	PAY ITEM	UNIT	TOTAL QUANTITY	CONSTRUCTION CODE	
				FAU 9256 / CH46 (FRANK SCOTT PARKWAY) SOUTH LEG ROADWAY STA. 35+80.39 - STA. 41+43.89 ST. CLAIR COUNTY 20% COUNTY / 80% FED 0021	FAU 9256 / CH46 (FRANK SCOTT PARKWAY) NORTH LEG ROADWAY STA. 41+43.89 - STA. 48+17.16 CITY OF BELLEVILLE 20% CITY / 80% FED 0021
X4403700	MEDIAN REMOVAL (SPECIAL)	SQ FT	2061	2061	0
X7010216	TRAFFIC CONTROL AND PROTECTION, (SPECIAL)	L SUM	1	0.5	0.5
Δ X8950305	REMOVE EXISTING SIGNAL HEAD	EACH	3	2	1

MODEL D:\646\11
 FILE NAME: P:\2018110223\4_CADD - DWG\4.7_TrafficCADD_Sheet3180233-4r-S00.dgn



USER NAME = mschwierjohn	DESIGNED - MLS	REVISED -
PLOT SCALE = 2.0000' / in.	DRAWN - DL	REVISED -
PLOT DATE = 1/6/2023	CHECKED - JWS	REVISED -
	DATE - AUG 2022	REVISED -



**ST. CLAIR COUNTY
DEPARTMENT OF ROADS & BRIDGES**

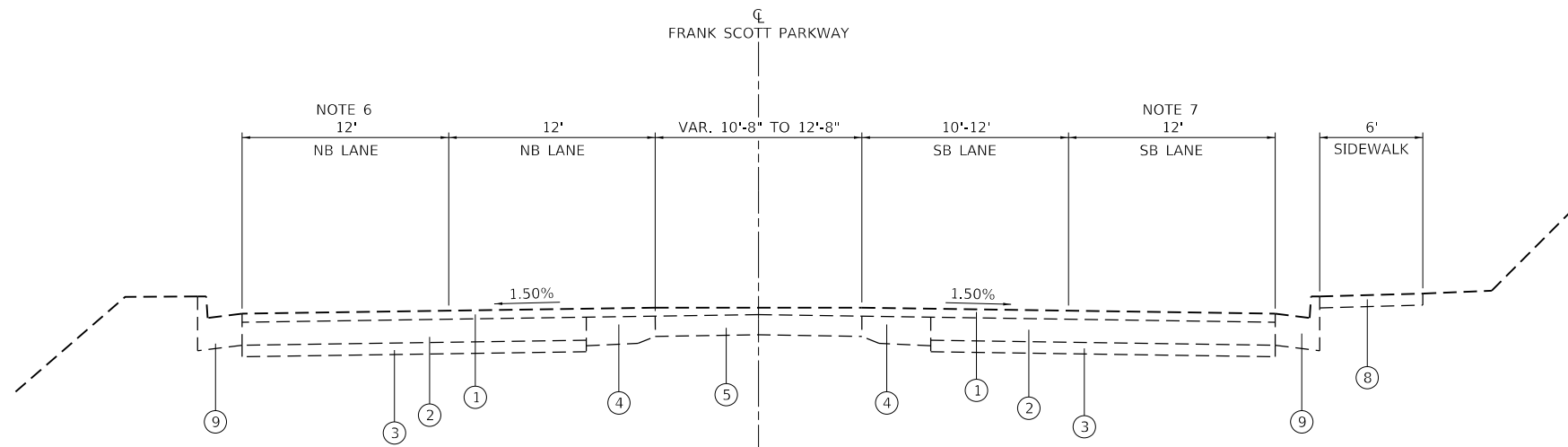
SUMMARY OF QUANTITIES

SCALE: NTS SHEET 4 OF 4 SHEETS STA. TO STA.

F.A.U. ROUTE	SECTION	COUNTY	TOTAL SHEETS	SHEET NO.
9256	18-00290-11-TL	ST. CLAIR	25	6
CONTRACT NO. 97788				
ILLINOIS FED. AID PROJECT				

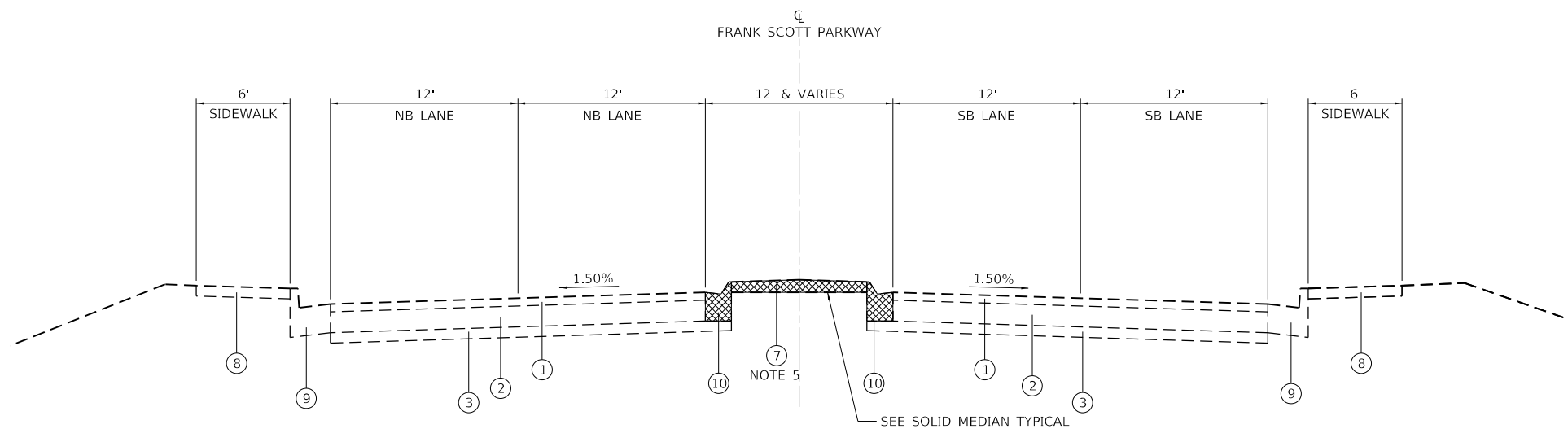
LEGEND

- ① EX. HMA SURFACE COURSE, 3"
- ② EX. STABILIZED BASE COURSE, 8"
- ③ EX. SUB-BASE GRANULAR MATERIAL TY A, 4"
- ④ EX. PCC PAVEMENT
- ⑤ EX. PAVEMENT PATCHING, 7"
- ⑥ EX. PAVEMENT PATCHING, 9"
- ⑦ EX. CONCRETE MEDIAN
- ⑧ EX. PCC SIDEWALK, 4"
- ⑨ EX. COMB. CONC. CURB & GUTTER TY B-6.24
- ⑩ EX. COMB. CONC. CURB & GUTTER TY M-6.12
- ⑪ PR. FULL DEPTH HMA, 11"
- ⑫ PR. SUB-BASE GRANULAR MATERIAL, TYP A, 4"
- ⑬ PR. PAVEMENT MARKING
- ⑭ PR. PRIME COAT



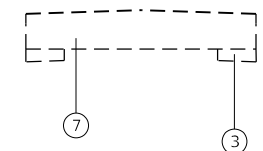
EXISTING TYPICAL SECTION

STA. 35+80.39 TO STA. 39+93.00



EXISTING TYPICAL SECTION

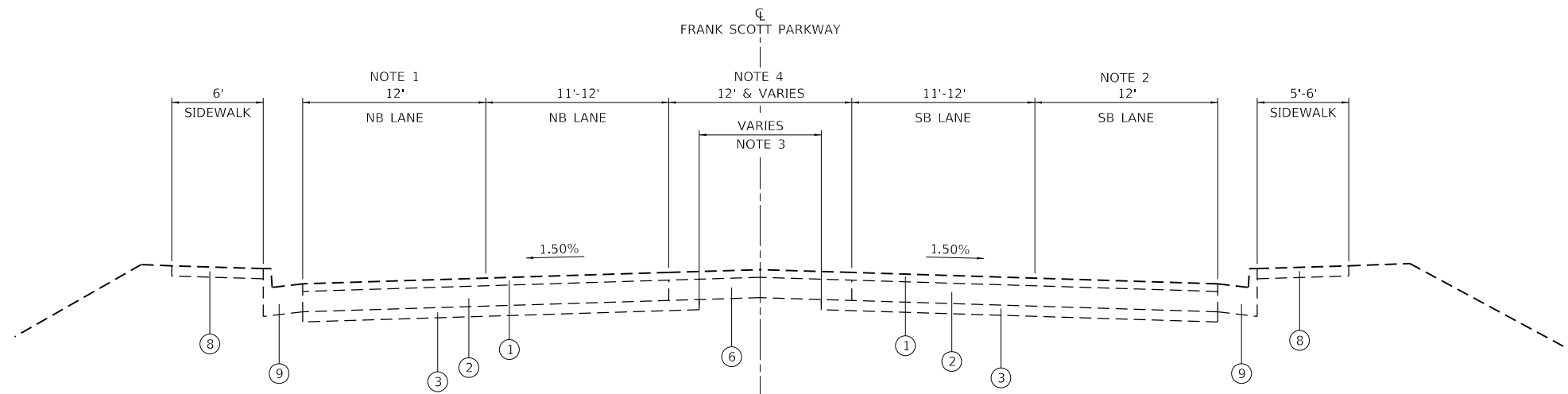
STA. 41+79.82 TO STA. 43+49.56 - RAISED MEDIAN
 STA. 43+49.56 TO STA. 43+91.90 - FLUSH MEDIAN (SEE FLUSH MEDIAN DETAIL)



EXISTING TYPICAL SECTION

FLUSH MEDIAN

STA. 43+49.56 TO STA. 43+91.90



EXISTING TYPICAL SECTION

STA. 39+93.00 TO STA. 41+03.64
 STA. 43+91.90 TO STA. 48+17.16

NOTES

1. EX. VARIABLE LANE WIDTH
STA. 46+50.03 (12'-0") TO STA. 47+91.82 (0'-0")
2. EX. VARIABLE LANE WIDTH
STA. 43+50.03 (12'-0") TO STA. 46+74.58 (0'-0")
3. EX. VARIABLE SUB-BASE OMISSION WIDTH
STA. 43+94 (10'-0) TO STA. 45+12 (0'-0")
4. EX. VARIABLE LANE WIDTH
STA. 39+93.00 (12'-8") TO STA. 41+03.64 (14'-8")
5. REMOVE EX. CONC. MEDIAN
STA. 41+79.82 TO 43+51.56
6. EX. VARIABLE LANE WIDTH
STA. 35+80.39 (0'-4") TO STA. 38+24.22 (12'-0")
7. EX. VARIABLE LANE WIDTH
STA. 35+80.39 (1'-0") TO STA. 39+93.00 (12'-0")

MODEL: D:\p\181180223\4_CADD - DWG\4.7_Tran\CADD_Sheets\180223-shc-typical.dgn



USER NAME = mschwierjohn	DESIGNED - MLS	REVISED -
PLOT SCALE = 10.0000 ' / in.	DRAWN - DL	REVISED -
PLOT DATE = 8/24/2022	CHECKED - JWS	REVISED -
	DATE - AUG 2022	REVISED -



**ST. CLAIR COUNTY
DEPARTMENT OF ROADS & BRIDGES**

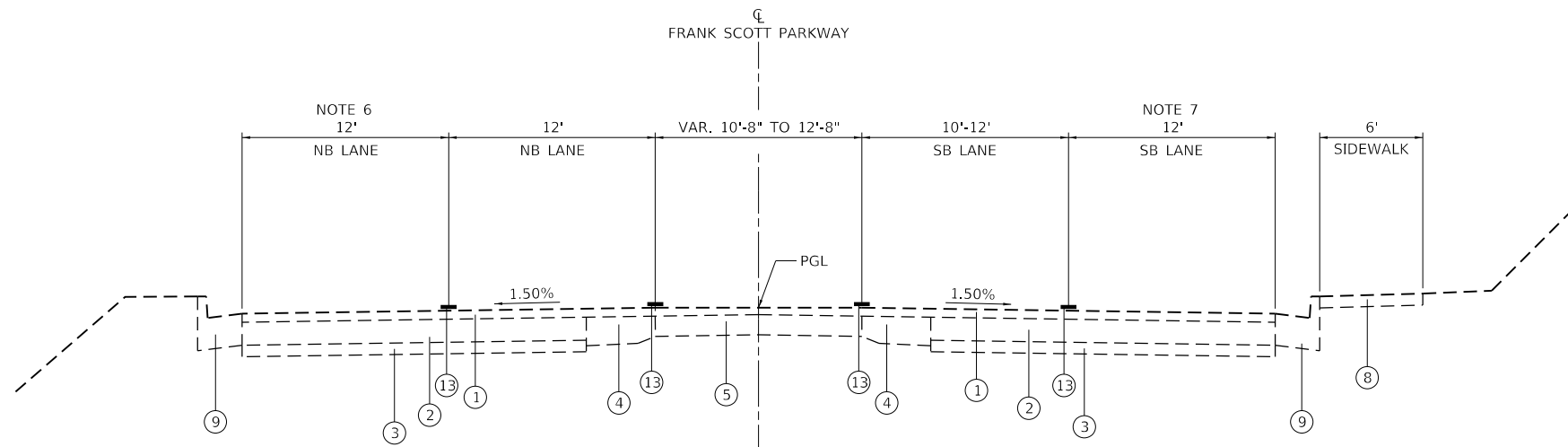
**EXISTING TYPICAL SECTIONS
FRANK SCOTT PARKWAY WEST**

SCALE: NTS SHEET 1 OF 2 SHEETS STA. TO STA.

F.A.U. ROUTE	SECTION	COUNTY	TOTAL SHEETS	SHEET NO.
9256	18-00290-11-TL	ST. CLAIR	25	7
			CONTRACT NO. 97788	
ILLINOIS FED. AID PROJECT				

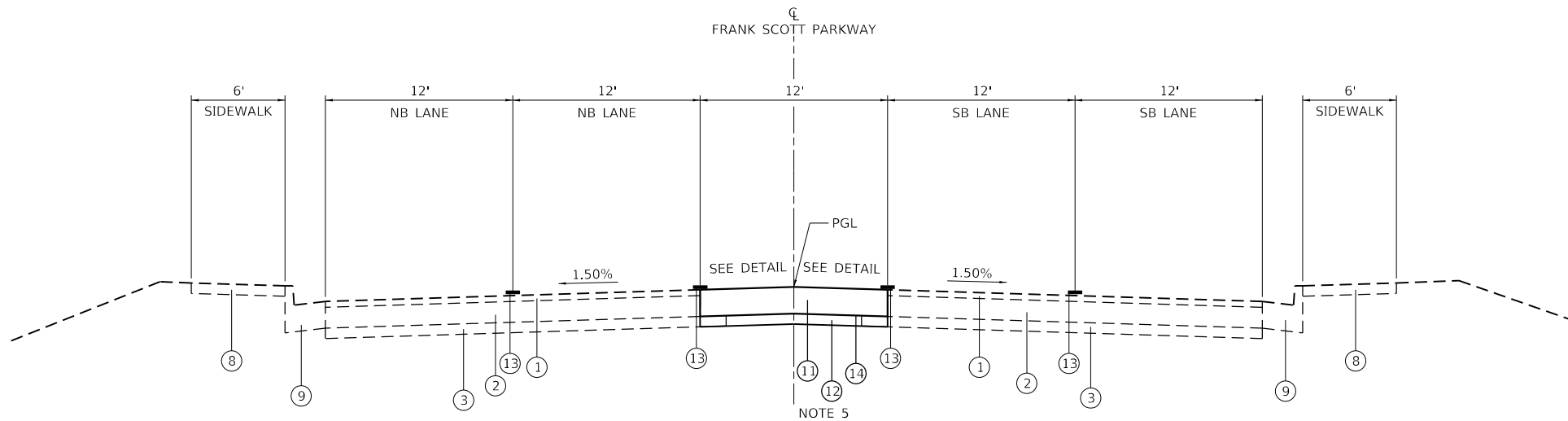
LEGEND

- ① EX. HMA SURFACE COURSE, 3"
- ② EX. STABILIZED BASE COURSE, 8"
- ③ EX. SUB-BASE GRANULAR MATERIAL TY A, 4"
- ④ EX. PCC PAVEMENT
- ⑤ EX. PAVEMENT PATCHING, 7"
- ⑥ EX. PAVEMENT PATCHING, 9"
- ⑦ EX. CONCRETE MEDIAN
- ⑧ EX. PCC SIDEWALK, 4"
- ⑨ EX. COMB. CONC. CURB & GUTTER TY B-6.24
- ⑩ EX. COMB. CONC. CURB & GUTTER TY M-6.12
- ⑪ PR. FULL DEPTH HMA, 11"
- ⑫ PR. SUB-BASE GRANULAR MATERIAL, TYP A, 4"
- ⑬ PR. PAVEMENT MARKING
- ⑭ PR. PRIME COAT



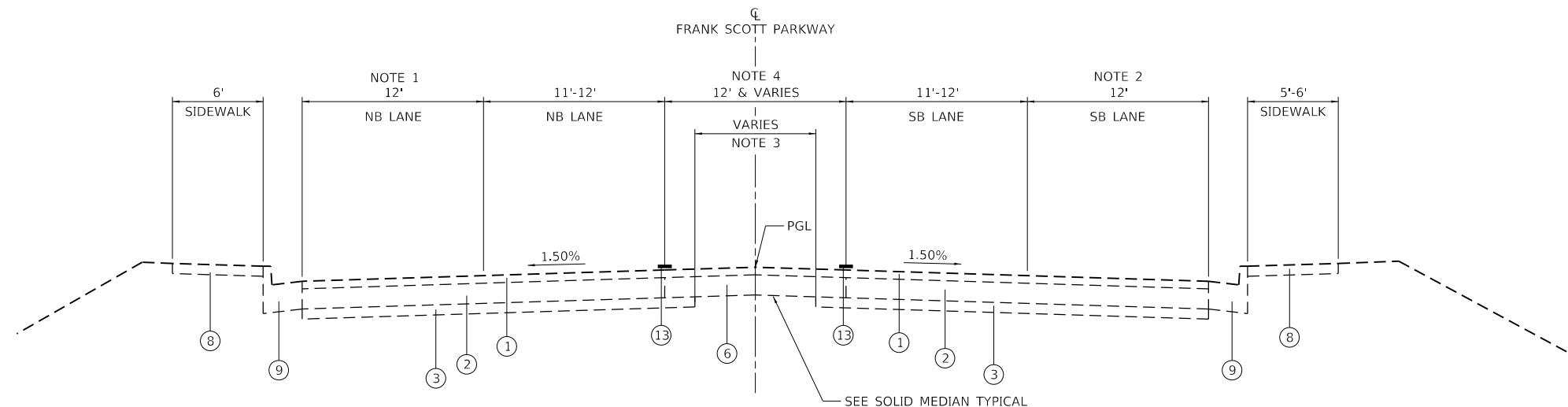
PROPOSED TYPICAL SECTION

STA. 35+80.39 TO STA. 39+93.00



PROPOSED TYPICAL SECTION

STA. 41+79.82 TO STA. 43+51.56



PROPOSED TYPICAL SECTION

STA. 39+93.00 TO STA. 41+03.64
STA. 43+51.56 TO STA. 48+17.16

EXISTING TYPICAL SECTION

FLUSH MEDIAN

STA. 43+51.56 TO STA. 43+91.90

NOTES

1. EX. VARIABLE LANE WIDTH
STA. 46+50.03 (12'-0") TO STA. 47+91.82 (0'-0")
2. EX. VARIABLE LANE WIDTH
STA. 43+50.03 (12'-0") TO STA. 46+74.58 (0'-0")
3. EX. VARIABLE SUB-BASE OMISSION WIDTH
STA. 43+94 (10'-0) TO STA. 45+12 (0'-0")
4. EX. VARIABLE LANE WIDTH
STA. 39+93.00 (12'-8") TO STA. 41+03.64 (14'-8")
5. REMOVE EX. CONC. MEDIAN
STA. 41+79.82 TO 43+51.56
6. EX. VARIABLE LANE WIDTH
STA. 35+80.39 (0'-4") TO STA. 38+24.22 (12'-0")
7. EX. VARIABLE LANE WIDTH
STA. 35+80.39 (1'-0") TO STA. 39+93.00 (12'-0")

MODEL: D:\p4\11\180223\4_CADD - DWG\4.7_Tran\CADD_Sheets\180223-shc-typical.dgn



USER NAME = mschwierjohn	DESIGNED - MLS	REVISED -
PLOT SCALE = 10.0000 ' / in.	DRAWN - DL	REVISED -
PLOT DATE = 8/24/2022	CHECKED - JWS	REVISED -
	DATE - AUG 2022	REVISED -



**ST. CLAIR COUNTY
DEPARTMENT OF ROADS & BRIDGES**

**PROPOSED TYPICAL SECTIONS
FRANK SCOTT PARKWAY WEST**

SCALE: NTS SHEET 2 OF 2 SHEETS STA. TO STA.

F.A.U. ROUTE	SECTION	COUNTY	TOTAL SHEETS	SHEET NO.
9256	18-00290-11-TL	ST. CLAIR	25	8
ILLINOIS FED. AID PROJECT			CONTRACT NO. 97788	

MEDIAN REMOVAL (SPECIAL) SCHEDULE				
LOCATION				MEDIAN REMOVAL (SPECIAL)
STATION	TO	STATION	NOTES	SQ FT
FSP WEST				
41+79.82	TO	43+51.56		2060.88
TOTAL :				2061

SIGNAGE SCHEDULE									
LOCATION		DESCRIPTION					**REMOVE AND RELOCATE SIGN PANEL & POLE ASSEMBLY	*SIGN PANEL - TYPE 1	TELESCOPING STEEL SIGN SUPPORT
STATION		SIGN	SHAPE	SIZE	EACH	SQ FT	FOOT		
FSP WEST									
38+81.89	39.18	RT	TWO-WAY LT ONLY SIGN	RECTANGLE	24 X 36	1			
			END SIGN	RECTANGLE	30 X 12				
38+82.39	33.95'	LT	TWO-WAY LT ONLY SIGN	RECTANGLE	24 X 36		6.00	16.5	
			BEGIN SIGN	RECTANGLE	30 X 12		2.50		
43+50.03	39.70'	LT	TWO-WAY LT ONLY SIGN	RECTANGLE	24 X 36		6.00	16.0	
			END SIGN	RECTANGLE	30 X 12		2.50		
43+89.60	38.91'	RT	TWO-WAY LT ONLY SIGN	RECTANGLE	24 X 36		6.00	15.9	
			BEGIN SIGN	RECTANGLE	30 X 12		2.50		
SUB-TOTAL :						1	25.50	48.4	
TRAFFIC SIGNAL PLAN TOTAL :							15.00		
TOTAL :						1	40.50	48	

* SEE TRAFFIC SIGNAL PLANS FOR ADDITIONAL INFORMATION
 **ALL REMOVE AND RELOCATE SIGN STATIONS ARE THE PROPOSED LOCATION. SEE SPECIAL PROVISIONS.

HOT-MIX ASPHALT PAVING SCHEDULE							
LOCATION				SUBBASE GRANULAR MATERIAL, TYPE A	BITUMINOUS MATERIALS (PRIME COAT)	BITUMINOUS MATERIALS (TACK COAT)	HOT-MIX ASPHALT PAVEMENT (FULL DEPTH), 11"
STATION	TO	STATION	LT/RT	SQ YD	POUND	POUND	SQ YD
FSP WEST							
41+79.82	TO	43+51.56	LT/RT	229.0	515.2	51.5	229.0
TOTAL :				229	515	52	229

EARTHWORK SCHEDULE						
LOCATION			EARTH EXCAVATION	FOR INFORMATION ONLY		
STATION	TO	STATION		EARTH EXCAVATION ADJUSTED FOR 25% SHRINKAGE	EMBANKMENT	BALANCE WASTE (+) SHORTAGE (-)
STATION	TO	STATION	CU YD	CU YD	CU YD	CU YD
FSP WEST						
41+79.82	TO	43+51.56	63	47	0	47
SUB-TOTAL :			63	47	0	47
PAY TOTAL :			65			

MODEL: D:\p4\it... FILE NAME: P:\2018110223\4_CADD...DWG\4.7_Tran\CADD_Sheet1180223-4-18-2022.dwg



USER NAME = mschwierjohn	DESIGNED - MLS	REVISED -
	DRAWN - DL	REVISED -
PLOT SCALE = 2,000' / in.	CHECKED - JWS	REVISED -
PLOT DATE = 8/24/2022	DATE - AUG 2022	REVISED -



ST. CLAIR COUNTY
DEPARTMENT OF ROADS & BRIDGES

SCHEDULE OF QUANTITIES

SCALE: NTS SHEET 1 OF 2 SHEETS STA. TO STA.

F.A.U. ROUTE	SECTION	COUNTY	TOTAL SHEETS	SHEET NO.
9256	18-00290-11-TL	ST. CLAIR	25	9
CONTRACT NO. 97788			ILLINOIS FED. AID PROJECT	

PAVEMENT MARKING SCHEDULE											
LOCATION					PAVEMENT MARKING REMOVAL - WATER BLASTING	THERMOPLASTIC PAVEMENT MARKING					
						LETTERS AND SYMBOLS	LINE 4"		LINE 12"	LINE 24"	
STATION	TO	STATION	LOCATION	TYPE	SQ FT		SQ FT	WHITE FOOT	YELLOW FOOT	WHITE FOOT	WHITE FOOT
FSP WEST											
35+80.39	TO	38+82.15	2-WAY LT LANE (RT)	SINGLE 4"				301.8			
				SKIP-DASH				75.4			
35+80.39	TO	38+82.15	2-WAY LT LANE (LT)	SKIP-DASH				75.4			
				SINGLE 4"				301.8			
35+80.39	TO	37+17.31	STRIPED MEDIAN	DOUBLE 4"	184.6						
35+80.39	TO	48+17.16	MEDIAN DIAGONALS	SINGLE 12"	409.3						
36+59.05	TO	36+59.05	2-WAY LT LANE	LARGE BIDIRECTIONAL TURN LT		31.2					
37+67.83	TO	38+82.43	LT LANE EDGE LINE	SINGLE 4"	38.2						
37+67.83	TO	37+82.43	STRIPED MEDIAN	DOUBLE 4"	75.9						
37+87.40	TO	37+87.40	LT TURN LANE	LARGE LEFT TURN ARROW	15.6						
37+99.71	TO	40+82.78	SKIP-DASHED CENTER LANE LINE	SKIP-DASH			71.1				
38+52.08	TO	38+52.08	LT TURN LANE	LARGE LEFT TURN ARROW	15.6						
38+59.05	TO	38+59.05	2-WAY LT LANE	LARGE BIDIRECTIONAL TURN LT		31.2					
38+82.15	TO	40+82.48	STRIPED MEDIAN	DOUBLE 4"			400.7				
38+82.15	TO	41+03.64	STRIPED MEDIAN	DOUBLE 4"	292.26						
39+13.79	TO	39+13.79	OUTSIDE THROUGH LANE	LARGE THROUGH ARROW	11.5						
39+13.95	TO	39+13.95	INSIDE THROUGH, LEFT LANE	LARGE THROUGH, LEFT ARROW	26						
39+42.19	TO	40+82.64	LT LANE EDGE LINE (RT)	SINGLE			140.5				
39+48.92	TO	40+80.86	SKIP-DASHED CENTER LANE LINE	SKIP-DASH			40.0				
39+67.04	TO	36+67.04	LT LANE	LARGE LEFT TURN ARROW		15.6					
39+91.50	TO	39+91.50	OUTSIDE THROUGH LANE	LARGE THROUGH ARROW	11.5						
39+92.33	TO	39+92.33	INSIDE THROUGH, LEFT LANE	LARGE THROUGH, LEFT ARROW	26						
40+60.11	TO	40+60.11	INSIDE THROUGH, LEFT LANE	LARGE THROUGH, LEFT ARROW	26						
40+59.09	TO	40+59.09	LT LANE	LARGE LEFT TURN ARROW		15.6					
40+82.48	TO	40+82.48	STOP BAR RT	SINGLE						51.1	
40+84.18	TO	40+84.18	STOP BAR RT	SINGLE	74.1						
40+84.83	TO	40+98.95	CROSSWALK LINES	SINGLE						213.6	
41+88.82	TO	41+98.06	CROSSWALK LINES	SINGLE						212.7	
42+01.91	TO	42+01.91	STOP BAR LT	SINGLE	74.6						
42+03.23	TO	43+12.71	LANE DIVIDER	SINGLE 4"	36.5						
42+05.03	TO	43+20.03	LT LANE EDGE LINE (LT)	SINGLE			115.0				
42+05.03	TO	44+31.14	SKIP-DASHED CENTER LANE LINE	SINGLE			56.5				
42+05.03	TO	42+05.03	STOP BAR LT	SINGLE						37.5	
42+05.03	TO	42+05.03	STOP BAR LT	SINGLE						12.0	
42+05.03	TO	43+80.03	STRIPED MEDIAN	DOUBLE 4"				350.0			
42+23.88	TO	44+24.10	SKIP-DASHED CENTER LANE LINE	SKIP-DASH			50.0				
42+30.08	TO	42+30.08	LT LANE	LARGE LEFT TURN ARROW		15.6					
42+32.08	TO	42+32.08	OUTSIDE THROUGH LANE	LARGE THROUGH ARROW	11.5						
42+33.77	TO	42+33.77	INSIDE THROUGH, LEFT LANE	LARGE THROUGH, LEFT ARROW	26.0						
42+95.03	TO	42+95.03	LT LANE	LARGE LEFT TURN ARROW		15.6					
42+98.48	TO	42+98.48	OUTSIDE THROUGH LANE	LARGE THROUGH ARROW	11.5						
43+00.95	TO	43+00.95	INSIDE THROUGH, LEFT LANE	LARGE THROUGH, LEFT ARROW	26.0						
43+80.03	TO	48+17.16	2-WAY LT LANE (RT)	SINGLE 4"			437.1				
				SKIP DASH			109.3				
43+80.03	TO	48+17.16	2-WAY LT LANE (LT)	SINGLE 4"			437.1				
				SKIP DASH			109.3				
43+86.09	TO	43+86.09	OUTSIDE THROUGH LANE	LARGE THROUGH ARROW	11.5						
43+87.68	TO	43+87.68	INSIDE THROUGH, LEFT LANE	LARGE THROUGH, LEFT ARROW	26.0						
43+91.84	TO	44+93.49	STRIPED MEDIAN	DOUBLE 4"	142.5						
44+03.39	TO	44+03.39	2-WAY LT LANE	LARGE BIDIRECTIONAL TURN LT		31.2					
45+70.62	TO	48+17.16	STRIPED MEDIAN	DOUBLE 4"	331.5						
45+98.39	TO	48+98.39	2-WAY LT LANE	LARGE BIDIRECTIONAL TURN LT		31.2					
N BELT WEST											
143+28.87	TO	143+28.87	STOP BAR - EB	SINGLE							52.0
143+33.48	TO	143+41.28	CROSSWALK LINES	SINGLE						191.8	
144+47.39	TO	144+55.41	CROSSWALK LINES	SINGLE						184.9	
144+59.85	TO	144+59.85	STOP BAR - WB	SINGLE							54.6
TOTAL :					1904	187	333	2738	803	207	
								3071			

MODEL: D:\d4\hjt
 FILE: N:\mhc\p2\01180223\4_CADD - DWG\4.7_Tran\CADD_Sheets\180223-shc-schedule.dgn



USER NAME = mschwierjohn
 PLOT SCALE = 2,0000 ' / in.
 PLOT DATE = 8/24/2022

DESIGNED - MLS
 DRAWN - DL
 CHECKED - JWS
 DATE - AUG 2022

REVISED -
 REVISED -
 REVISED -
 REVISED -

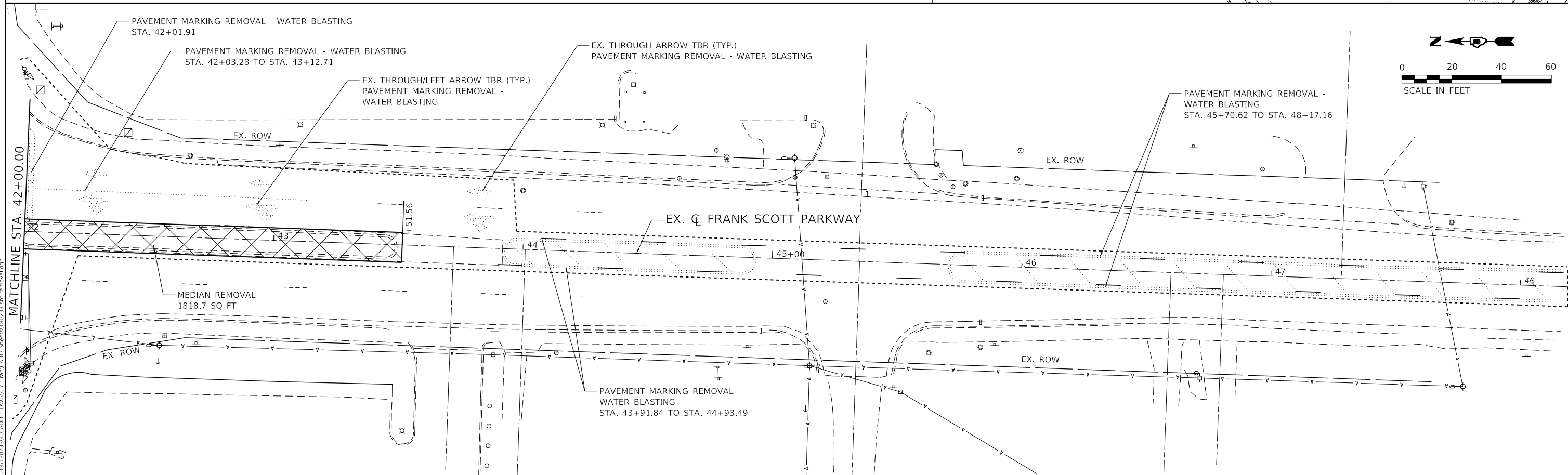
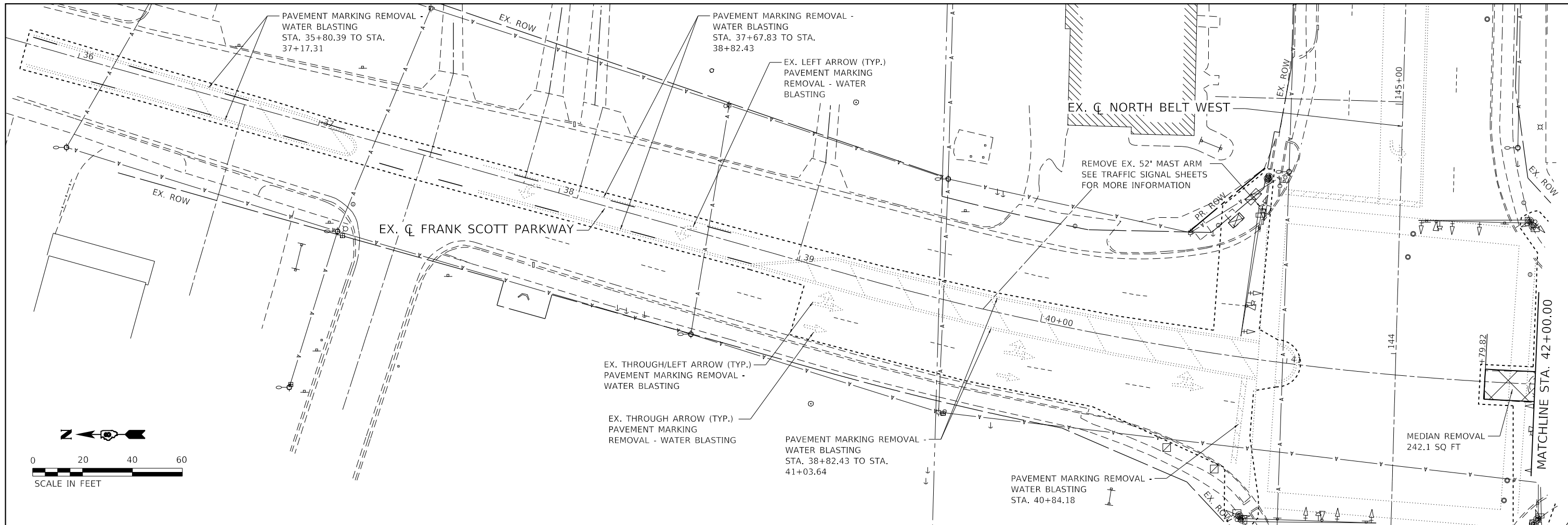


ST. CLAIR COUNTY
DEPARTMENT OF ROADS & BRIDGES

SCHEDULE OF QUANTITIES

SCALE: NTS SHEET 2 OF 2 SHEETS STA. TO STA.

F.A.U. ROUTE	SECTION	COUNTY	TOTAL SHEETS	SHEET NO.
9256	18-00290-11-TL	ST. CLAIR	25	10
CONTRACT NO. 97788				
ILLINOIS FED. AID PROJECT				



MODEL: D:\dxf\11
 FILE NAME: P:\2018\180223\4_CADD - DWG\4.7_Traffic\4.7_CADD_Sheets\180223-4frremoval.dgn



USER NAME = mschwierjohn	DESIGNED - MLS	REVISED -
DRAWN - DL	REVISOR -	
PLOT SCALE = 40,0000 ' / in.	CHECKED - JWS	REVISED -
PLOT DATE = 8/24/2022	DATE - AUG 2022	REVISED -



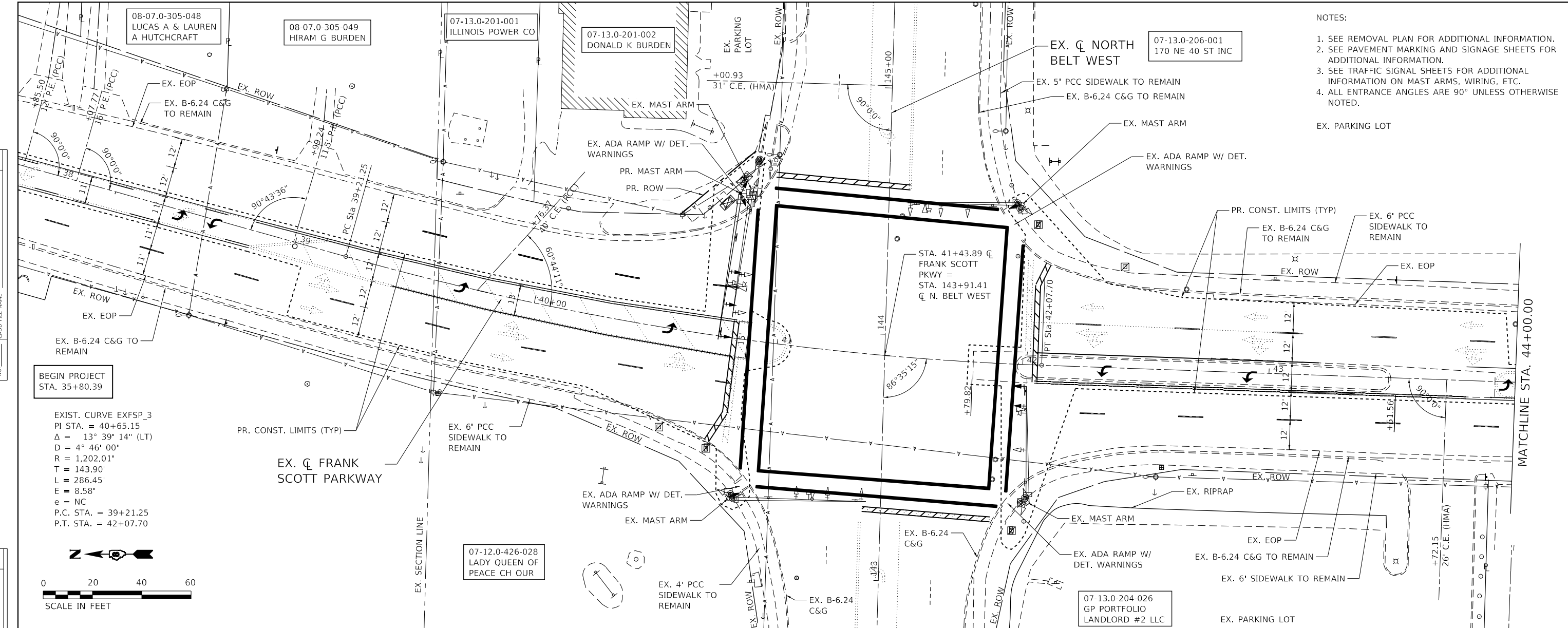
**ST. CLAIR COUNTY
 DEPARTMENT OF ROADS & BRIDGES**

REMOVAL PLAN FRANK SCOTT PARKWAY WEST			
SCALE: 1"=20'	SHEET 1	OF 1 SHEETS	STA. 35+80.15 TO STA. 48+17.16

F.A.U. ROUTE	SECTION	COUNTY	TOTAL SHEETS	SHEET NO.
9256	18-00290-11-TL	ST. CLAIR	25	11
CONTRACT NO. 97788			ILLINOIS FED. AID PROJECT	

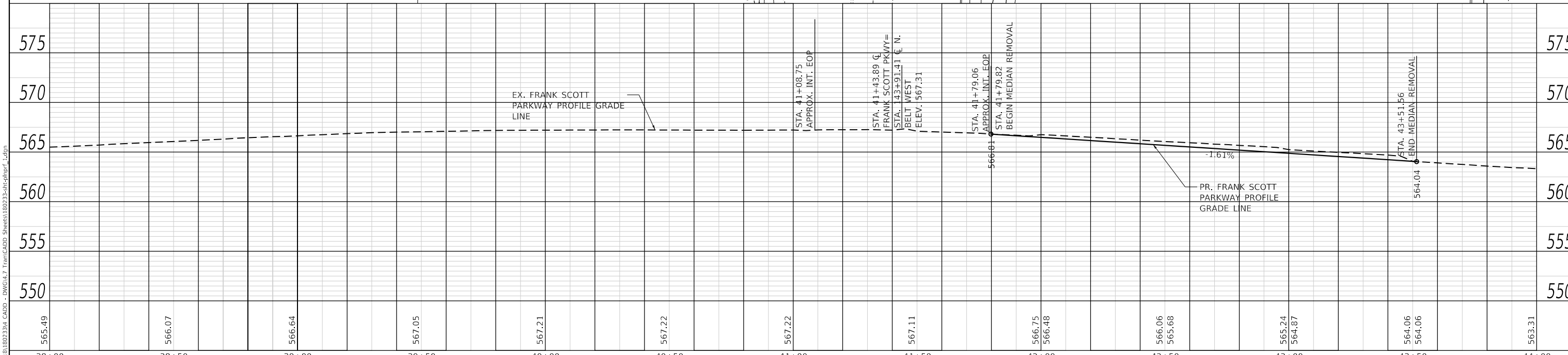
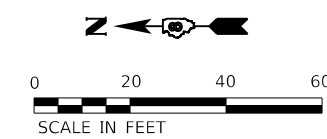
PLAN	SURVEYED	DATE
	PLOTTED	
	ALIGNED	
	CHECKED	
	FILED	
	NO.	

PROFILE	SURVEYED	DATE
	PLOTTED	
	GRADES	
	CHECKED	
	STRUCTURE	
	NOTATIONS	
	NO.	



- NOTES:
1. SEE REMOVAL PLAN FOR ADDITIONAL INFORMATION.
 2. SEE PAVEMENT MARKING AND SIGNAGE SHEETS FOR ADDITIONAL INFORMATION.
 3. SEE TRAFFIC SIGNAL SHEETS FOR ADDITIONAL INFORMATION ON MAST ARMS, WIRING, ETC.
 4. ALL ENTRANCE ANGLES ARE 90° UNLESS OTHERWISE NOTED.

EXIST. CURVE EXFSP_3
 PI STA. = 40+65.15
 $\Delta = 13^\circ 39' 14''$ (LT)
 $D = 4^\circ 46' 00''$
 $R = 1,202.01'$
 $T = 143.90'$
 $L = 286.45'$
 $E = 8.58'$
 $e = NC$
 P.C. STA. = 39+21.25
 P.T. STA. = 42+07.70



38+00	38+50	39+00	39+50	40+00	40+50	41+00	41+50	42+00	42+50	43+00	43+50	44+00
565.49	566.07	566.64	567.05	567.21	567.22	567.22	567.11	566.75 566.48	566.06 565.68	565.24 564.87	564.06 564.06	563.31



USER NAME = mschwieerjohn	DESIGNED - MLS	REVISED -
	DRAWN - DL	REVISED -
PLOT SCALE = 40,0000' / in.	CHECKED - JWS	REVISED -
PLOT DATE = 8/24/2022	DATE - AUG 2022	REVISED -



ST. CLAIR COUNTY
 DEPARTMENT OF ROADS & BRIDGES

PLAN AND PROFILE
 FRANK SCOTT PARKWAY WEST

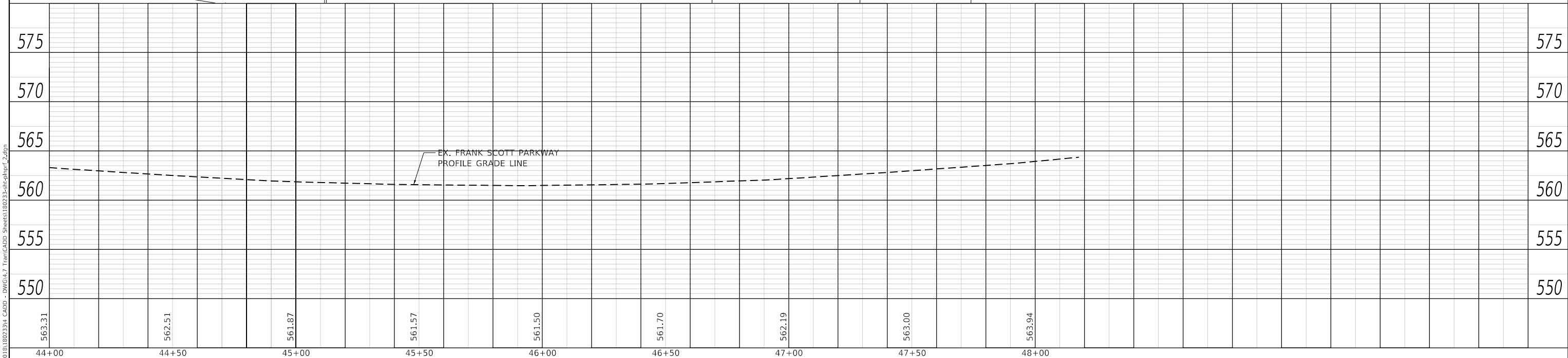
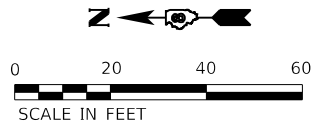
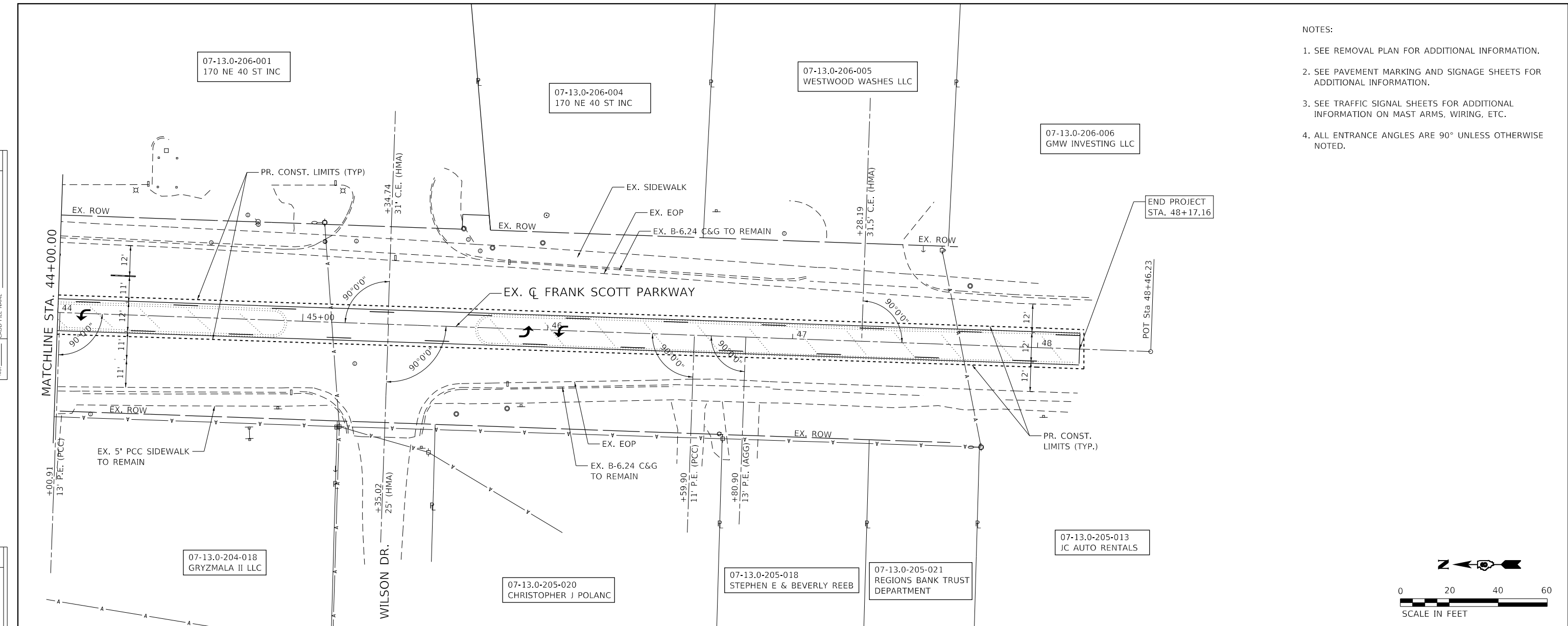
SCALE: 1" = 20' SHEET 1 OF 2 SHEETS STA. 38+00.00 TO STA. 44+00.00

F.A.U. ROUTE	SECTION	COUNTY	TOTAL SHEETS	SHEET NO.
9256	18-00290-11-TL	ST. CLAIR	25	12
CONTRACT NO. 97788			ILLINOIS FED. AID PROJECT	

- NOTES:
1. SEE REMOVAL PLAN FOR ADDITIONAL INFORMATION.
 2. SEE PAVEMENT MARKING AND SIGNAGE SHEETS FOR ADDITIONAL INFORMATION.
 3. SEE TRAFFIC SIGNAL SHEETS FOR ADDITIONAL INFORMATION ON MAST ARMS, WIRING, ETC.
 4. ALL ENTRANCE ANGLES ARE 90° UNLESS OTHERWISE NOTED.

PLAN	SURVEYED	DATE
	PLOTTED	
	ALIGNMENT CHECKED	
	NOTE BOOK NO.	
	CADD FILE NAME	

PROFILE	SURVEYED	DATE
	PLOTTED	
	GRADES CHECKED	
	NOTE BOOK NO.	
	STRUCTURE NOTATIONS CHECKED	



	USER NAME = mschwiejoh	DESIGNED - MLS	REVISED -
	PLOT SCALE = 40.0000' / in.	DRAWN - DL	REVISED -
	PLOT DATE = 8/24/2022	CHECKED - JWS	REVISED -
		DATE - AUG 2022	REVISED -



ST. CLAIR COUNTY
DEPARTMENT OF ROADS & BRIDGES

PLAN AND PROFILE
FRANK SCOTT PARKWAY WEST

SCALE: 1" = 20' SHEET 2 OF 2 SHEETS STA. 44+00.00 TO STA. 48+17.16

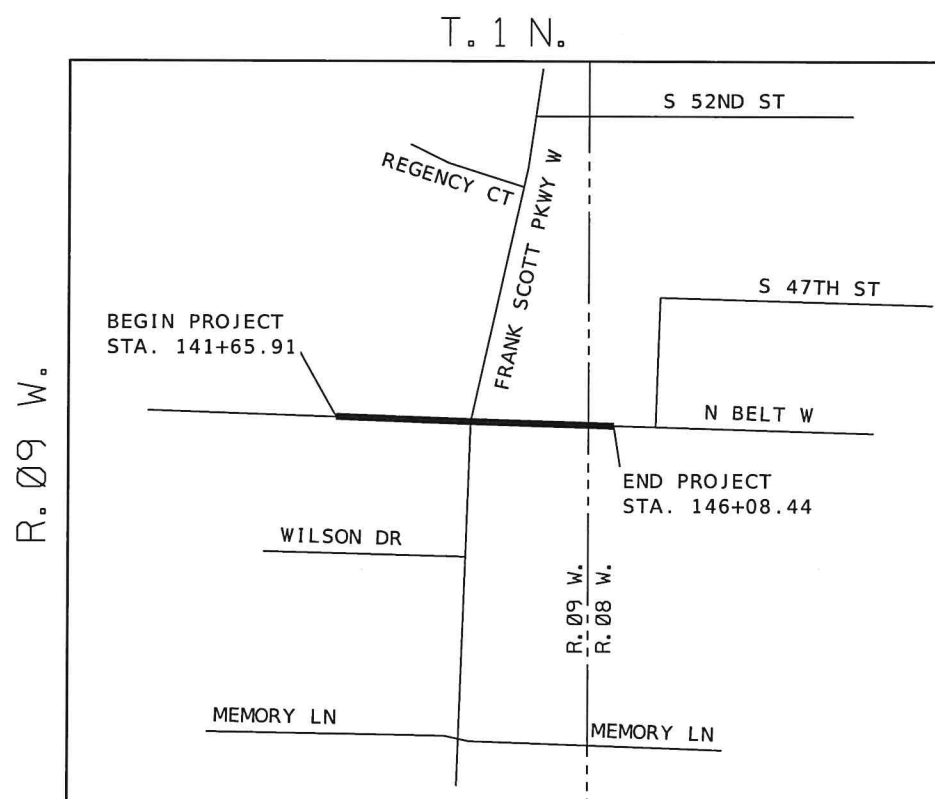
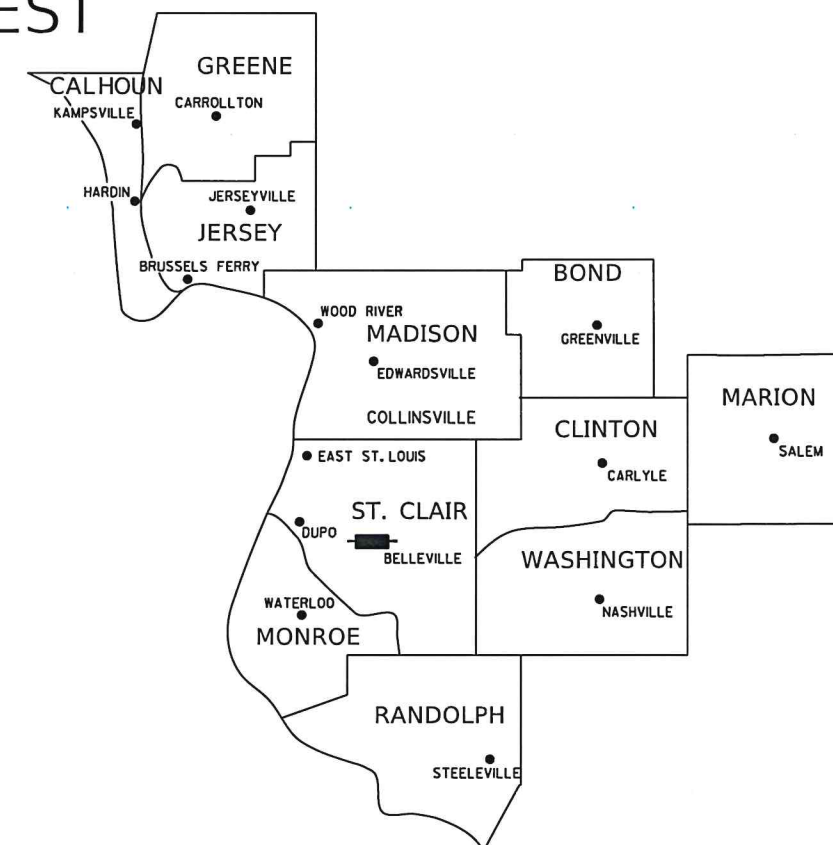
F.A.U. ROUTE	SECTION	COUNTY	TOTAL SHEETS	SHEET NO.
9256	18-00290-11-TL	ST. CLAIR	25	13
CONTRACT NO. 97788			ILLINOIS FED. AID PROJECT	

SUBMITTAL DATE
02/15/2022

SPACE RESERVED FOR RECORDING OFFICER

PLAT OF HIGHWAYS

ST CLAIR COUNTY HIGHWAY DEPARTMENT
FAU 9257/ROUTE 9257
FRANK SCOTT PARKWAY/NORTH BELT WEST
SECTION 18-00290-11-TL
PROJECT NO. AB9N(513)
ST. CLAIR COUNTY, ILLINOIS
JOB NO. R-98-007-22



LOCATION OF SECTION INDICATED THUS:

I HEREBY CERTIFY THAT THIS IS A CORRECT PLAT OF FRANK SCOTT PARKWAY WEST, COUNTY HIGHWAY 46, CONSTRUCTION SECTION 18-00290-11-TL AS SURVEYED AND STAKED FOR ST. CLAIR COUNTY, ILLINOIS

DATED _____

NORMAN ETLING, PE, COUNTY ENGINEER
ST. CLAIR COUNTY

PROJECT LENGTH = 443 LIN. FT. = 0.08 MILES

SHEET INDEX		
SHEET NO.	STATION TO STATION	PARCEL(S)
1	COVER SHEET	
2	LEGEND SHEET	
3	144+46.35 - 144+73.95	B207041
4	CONTROL TIE SHEET	



PREPARED BY:
THOUVENOT, WADE & MOERCHEN, INC.
SWANSEA • WATERLOO • EDWARDSVILLE • ST. LOUIS • ST. CHARLES

CORPORATE OFFICE
4940 Old Collinsville Road
Swansea, Illinois 62226
Tel: 618.624.4488
Fax: 618.624.6688



IDPR DESIGN FIRM LICENSE NO. 184-001220
DATE: 02-18-2022

Edgar M. Barnal
EDGAR M. BARNAL, PLS #2750
LICENSE EXPIRATION DATE: 11/30/2022

LEGEND FOR EXISTING TOPOGRAPHIC SYMBOLS

TRAFFIC SIGNAL GULFBOX		DRAINAGE FLOW LINE	
TRAFFIC SIGNAL HANDHOLE		RIP RAP	
TRAFFIC SIGNAL SIGNAL POST		HEADWALL	
TRAFFIC SIGNAL STEEL MAST ARM		CULVERT END SECTION	
TRAFFIC SIGNAL PEDESTRIAN PUSH BUTTON		DRAINAGE MANHOLE	
TRAFFIC SIGNAL WOODEN POLE		INLET	
TRAFFIC SIGNAL VEHICLE DETECTION PRIORITY		ROADWAY DITCH FLOW	
TRAFFIC SIGNAL VEHICLE DETECTION MAGNET		VEGETATION LINE	
TRAFFIC SIGNAL JUNCTION BOX		STUMP	
TRAFFIC SIGNAL CONTROLLER		SHRUB	
TRAFFIC SIGNAL HEAVY DUTY HANDHOLE		EVERGREEN TREE	
RAILROAD CANTILEVER MAST ARM		DECIDUOUS TREE	
RAILROAD CROSSBUCK		WOODS/BUSH LINE	
RAILROAD TRACK		TRAFFIC SIGN	
RAILROAD TRACK (ABANDONED)		GUARDRAIL POST	
RAILROAD CROSSGATE		GUARDRAIL	
RAILROAD CONTROL BOX		FIELD LINE	
RAILROAD FLASHING SIGNAL		LEVEE/NOISE BARRIER	
UTILITY TELEPHONE SPLICE BOX		FENCE	
UTILITY POWER POLE		MAIL BOX	
UTILITY TRAFFIC SIGNAL		ADVERTISING SIGN	
UTILITY LIGHT POLE		MARSH	
UTILITY FIRE HYDRANT		LIGHTING HANDHOLE	
UTILITY MANHOLE		LIGHTING POWER POLE	
UTILITY TELEPHONE POLE		LIGHTING JUNCTION BOX	
UTILITY GUY ANCHOR		LIGHTING HEAVYDUTY HANDHOLE	
UTILITY PIPELINE WARNING SIGN		LIGHTING CONTROLLER	
UTILITY HANDHOLE		LIGHTING PULL POINT	
UTILITY SPLICE BOX		HIGHWAY LIGHTING ELECTRICAL GROUND	
UTILITY JUNCTION BOX		HIGHWAY LIGHTING SINGLE UNIT	
UTILITY HEAVY DUTY HANDHOLE		HIGHWAY LIGHTING DOUBLE UNIT	
UTILITY DOUBLE HANDHOLE		EXISTING CONCRETE BARRIER	
UTILITY CONTROLLER		EXISTING CREEK OR DITCH	
UTILITY WATER METER		EXISTING EDGE OF PAVEMENT	

RIGHT-OF-WAY LEGEND

	SECTION CORNERS		QUARTER SECTION CORNERS
	EXISTING CENTERLINE		EXISTING RIGHT-OF-WAY LINE
	FORMER RIGHT-OF-WAY LINE		EXISTING IDOT EASEMENT LINE
	EXISTING EASEMENT LINE		BUILDING SETBACK LINE
	EXISTING ACCESS CONTROL LINE		EXISTING RIGHT-OF-WAY & PROPOSED ACCESS CONTROL LINE
	PROPOSED ACCESS CONTROL LINE		PROPOSED CENTERLINE
	PROPOSED RIGHT-OF-WAY LINE		PROPOSED TEMPORARY EASEMENT LINE
	PROPOSED PERMANENT EASEMENT LINE		SECTION LINE
	QUARTER SECTION LINE		QUARTER QUARTER SECTION LINE
	PROPERTY LINE (TITLE)		RECORDED PLAT/DEED LINE
	APPARENT PROPERTY LINE		SAME OWNERSHIP
	MEASURED DIMENSION		RECORDED DIMENSION
	FOUND STONE		FOUND IRON PIPE OR IRON ROD AT CORNER UNLESS OTHERWISE NOTED
	SET 5/8 INCH IRON ROD WITH PLASTIC CAP IDENTIFIED BY SURVEYORS LICENSE NUMBER AT CORNER UNLESS OTHERWISE NOTED		PERMANENT SURVEY MONUMENT, I.D.O.T. STD. 667101 (TO BE SET BY OTHERS)
	SET 5/8 INCH IRON ROD AS SURVEY CONTROL UNLESS OTHERWISE NOTED		FOUND CUT CROSS
	SET CUT CROSS		

LEGEND FOR ABBREVIATIONS

A/C	ACCESS CONTROL
AC	ACRE
AVE	AVENUE
BK	BOOK
BLVD	BOULEVARD
C	CENTERLINE
CAB	CABINET
CH	COUNTY HIGHWAY
Ch	CHAIN
CP	CONTROL POINT
CPS	COTTON PICKER SPINDLE
DB	DEED BOOK
E	EAST
EX	EXISTING
FA	FEDERAL AID
FAI	FEDERAL AID INTERSTATE
FAP	FEDERAL AID PRIMARY
FAS	FEDERAL AID SECONDARY
FAU	FEDERAL AID URBAN
FND	FOUND
ha	HECTARE
IP	IRON PIPE
IR	IRON ROD
LT	LEFT
m ²	METER
m	SQUARE METERS
N	NORTH
N/F	NOW OR FORMERLY
N & BC	NAIL AND BOTTLE CAP
N & C	NAIL AND CAP
N & W	NAIL AND WASHER
NE	NORTHEAST
NW	NORTHWEST
PB	PLAT BOOK
PG	PAGE
POB	POINT OF BEGINNING
POC	POINT OF COMMENCEMENT
POT	POINT ON TANGENT
PL	PROPERTY LINE
PR	PROPOSED
R	RANGE
RD	ROAD
REC	RECORD
ROW	RIGHT-OF-WAY
RR	RAILROAD
RRS	RAILROAD SPIKE
RT	RIGHT
RTE	ROUTE
S	SOUTH
SBI	STATE BOND ISSUE
SE	SOUTHEAST
SEC	SECTION
SQ FT	SQUARE FEET
SR	STATE ROUTE
ST	STREET
STA	STATION
SMK	SURVEY MARKER
SW	SOUTHWEST
T	TOWNSHIP
TR	TOWNSHIP ROAD
USGS	U.S. GEOLOGICAL SURVEY
W	WEST



SUBMITTAL DATE
02/15/2022

SPACE RESERVED FOR RECORDING OFFICER

PROPOSED PARCEL NUMBER LEGEND

8101011	PROPOSED FEE SIMPLE ACQUISITION
8101011PE	PROPOSED PERMANENT EASEMENT
8101011TE	PROPOSED TEMPORARY EASEMENT
8101011DE	PROPOSED DEDICATION
8101011AC	PROPOSED ACCESS CONTROL LINE

CURVE ABBREVIATIONS

PC	POINT OF CURVATURE
PI	POINT OF INTERSECTION
PT	POINT OF TANGENCY
PRC	POINT OF REVERSE CURVE
PCC	POINT OF COMPOUND CURVE
R	RADIUS OF CURVE
L	LENGTH OF CURVE
CB	CHORD BEARING
C	CHORD LENGTH
D	DEGREE OF CURVE
E	EXTERNAL ORDINATE
Δ	CENTRAL ANGLE

BASIS OF COORDINATE & BEARING STATEMENT

BASIS OF BEARINGS AND COORDINATES: ALL DISTANCES AND COORDINATES SHOWN HEREON ARE GROUND (GRID SCALED) VALUES AND REFERENCED TO ILLINOIS STATE PLANE COORDINATE SYSTEM, WEST ZONE.
LINEAR UNIT: US SURVEY FEET (SFT)
GEODETIC DATUM: NAD 83 (2011)
VERTICAL DATUM: NAVD 88 (GEOID12B)

PROJECT LOCATION:
LATITUDE: 38°32'29.37887"N NORTHING: 682679.316 SFT
FALSE NORTHING: 0.00 SFT
LONGITUDE: 90°02'11.12033"W EASTING: 2333835.189 SFT
FALSE EASTING: 0.00 SFT
HEIGHT: 473.25 FT
ELEV: 573.99 FT
CM SCALE FACTOR: 1.0000798274

FIELD WORK COMPLETED ON AUGUST 22, 2019.

- STAKING OF PROPOSED RIGHT-OF-WAY AND PERMANENT EASEMENT CORNERS. SET 5/8 INCH METAL ROD WITH DIVISION OF HIGHWAY SURVEY ALUMINUM CAP TO MONUMENT THE POSITION SHOWN, IDENTIFIED BY INSCRIPTION DATA AND SURVEYORS LICENSE NUMBER.
- STAKING OF PROPOSED RIGHT-OF-WAY AND PERMANENT EASEMENT CORNERS IN CULTIVATED AREA, A MINIMUM OF 20 INCHES BELOW THE GROUND SURFACE. SET 5/8 INCH METAL ROD WITH DIVISION OF HIGHWAY SURVEY ALUMINUM CAP TO MONUMENT THE POSITION SHOWN, IDENTIFIED BY INSCRIPTION DATA AND SURVEYORS LICENSE NUMBER.

TOTAL HOLDING AREA SOURCE TABLE

1	AREA ACCORDING TO THE SURVEY PERFORMED BY THE CONSULTANT.
2	AREA LISTED IN RECORDED DEED.
3	AREA ACCORDING TO A RECORDED SUBDIVISION PLAT.
4	AREA ACCORDING TO A PLAT OF SURVEY.
5	AREA CALCULATED FROM RECORDED DEEDS OR TITLE COMMITMENTS - NOT SURVEYED.
6	AREA ACCORDING TO COUNTY TAX MAPS AND COUNTY ASSESSMENT RECORDS.
7	AREA ACCORDING TO OTHER RECORDS, SEE NOTE ON THE PLAT OF HIGHWAYS.

TOPOGRAPHIC STATEMENT

THE TOPOGRAPHY SHOWN HEREON WAS COMPLETED BY THOUVENOT, WADE, AND MOERCHEN, INC. ON AUGUST 22, 2019.

PREPARED BY:
THOUVENOT, WADE & MOERCHEN, INC.
SWANSEA • WATERLOO • EDWARDSVILLE • ST. LOUIS • ST. CHARLES

CORPORATE OFFICE
1990 Old Collinsville Road
Swansea, Illinois 62226
Tel: 618.624.4488
Fax: 618.624.6688

EDGAR M. BARNAL
DESIGN FIRM LICENSE NO. 184-001220

EDWARDSVILLE, IL
EDGAR M. BARNAL, PLS NO. 2750
LICENSE EXPIRATION DATE: 11/30/2022

**PROJECT SURVEY CONTROL DATA
GROUND SURFACE COORDINATE SYSTEM**

COORDINATES ESTABLISHED BY THOUVENOT, WADE & MOERCHEN, INC.
JOB NO. 180233

POINT NO.	NORTH (FEET)	EAST (FEET)	DESCRIPTION
CP #203	682,629.578	2,333,661.983	SET IRON PIN W/ TW M CONTROL CAP
CP #204	682,841.162	2,333,650.649	SET IRON PIN W/ TW M CONTROL CAP
CP #206	682,917.653	2,333,805.505	SET IRON PIN W/ TW M CONTROL CAP
CP #207	682,703.25	2,333,891.146	SET IRON PIN W/ TW M CONTROL CAP

ILLINOIS DEPARTMENT OF TRANSPORTATION
PLAT OF HIGHWAYS
FAU ROUTE 9257
SECTION 18-00290-11-TL
ST. CLAIR COUNTY
JOB NO. R-98-007-22

SHEET 2 OF 4

ILLINOIS DEPARTMENT OF TRANSPORTATION				
OFFICE OF HIGHWAYS PROJECT IMPLEMENTATION/REGION 5/DISTRICT 8				
1102 EASTPORT PLAZA DRIVE				
COLLINSVILLE, ILLINOIS 62234-6198				
F.A.U. RTE.	SECTION	COUNTY	TOTAL SHEETS	SHEET NO.
9257	18-00290-11-TL	ST. CLAIR	25	15
COMPLETION DATE OF FIELD WORK PERFORMED				CONTRACT NO. 97788
LAND SURVEY:	08/22/2019	ROW STAKING:	XX/XX/XXXX	FED. ROAD DIST. NO.
				ILLINOIS
				FED. AID PROJECT

SHEET 1 IS A COVER SHEET

I HERBY CERTIFY THAT THIS IS A CORRECT PLAT OF FRANK SCOTT PARKWAY WEST, COUNTY HIGHWAY 46, CONSTRUCTION SECTION 18-00290-11-TL AS SURVEYED AND STAKED FOR ST. CLAIR COUNTY, ILLINOIS

DATED _____
NORMAN ETILING, PE, COUNTY ENGINEER
ST. CLAIR COUNTY

PART OF SECTION 13, T1N, R9W, OF THE 3RD PM, ST. CLAIR COUNTY, ILLINOIS

CURVE C-1 (NOW)
 PI STA. = 40+65.15(M)
 $\Delta = 13^{\circ}39'14''(M)$
 $T = 143.90'(M)$
 $L = 286.45'(M)$
 $R = 1202.01'(M)$
 C.B. = 509°06'29"W(M)
 P.C. STA. = 39+21.25(M)
 P.T. STA. = 42+07.70(M)

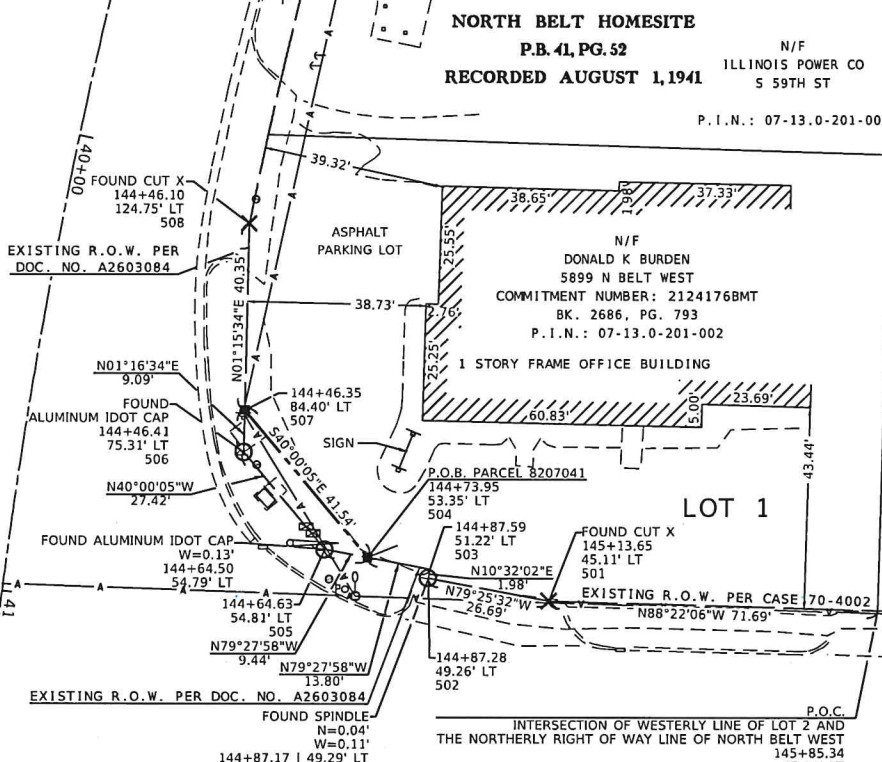
POINT NO.	NORTHING	EASTING
500	682,800.00	2,333,916.94
501	682,802.04	2,333,845.28
502	682,806.94	2,333,819.04
503	682,808.89	2,333,819.41
504	682,811.41	2,333,805.84
505	682,813.14	2,333,796.56
506	682,834.14	2,333,778.93
507	682,843.23	2,333,779.13
508	682,883.57	2,333,780.03

SUBMITTAL DATE
02/15/2022

SPACE RESERVED FOR RECORDING OFFICER



N/F
 LADY QUEEN OF PEACE CHURCH
 593 N BELT WEST
 P.I.N.: 07-12.0-426-028



I HERBY CERTIFY THAT THIS IS A CORRECT PLAT OF FRANK SCOTT PARKWAY WEST, COUNTY HIGHWAY 46, CONSTRUCTION SECTION 18-00290-11-TL AS SURVEYED AND STAKED FOR ST. CLAIR COUNTY, ILLINOIS

NORMAN ETLING, PE, COUNTY ENGINEER
 ST. CLAIR COUNTY

PREPARED BY:
THOUVENOT, WADE & MOERCHEN, INC.
 SWANSEA • WATERLOO • EDWARDSVILLE • ST. LOUIS • ST. CHARLES



CORPORATE OFFICE
 4940 Old Collinsville Road
 Swansea, Illinois 62226
 Tel: 618.624.4488
 Fax: 618.624.6688

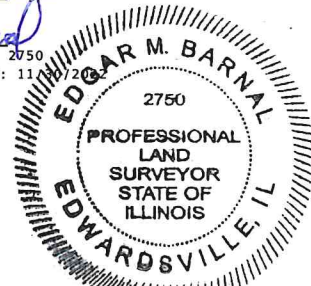
IDPR DESIGN FIRM LICENSE NO. 184-001220

STATE OF ILLINOIS)
) SS
 COUNTY OF ST. CLAIR)

I, EDGAR M BARNAL, AN ILLINOIS PROFESSIONAL LAND SURVEYOR, CERTIFY THAT I HAVE SURVEYED THE PLAT OF HIGHWAY, SHOWN HEREON AND THAT THIS PROFESSIONAL SERVICE CONFORMS TO THE CURRENT ILLINOIS MINIMUM STANDARDS FOR A BOUNDARY SURVEY FOR THE PROPOSED PARCEL TO BE ACQUIRED BY ST. CLAIR COUNTY, ILLINOIS FOR A TURN LANE.

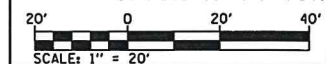
DATED **02-18-2022**

Edgar M Barnal
 EDGAR M BARNAL, PLS NO. 2750
 LICENSE EXPIRATION DATE: 11/11/2022



ILLINOIS DEPARTMENT OF TRANSPORTATION
PLAT OF HIGHWAYS

FAU ROUTE 9257
 SECTION 18-00290-11-TL
 ST. CLAIR COUNTY
 JOB NO. R-98-007-22
 STA. 141+66 TO STA. 146+08



SHEET 3 OF 4

ILLINOIS DEPARTMENT OF TRANSPORTATION
 OFFICE OF HIGHWAYS PROJECT IMPLEMENTATION/REGION 5/DISTRICT 8
 1102 EASTPORT PLAZA DRIVE
 COLLINSVILLE, ILLINOIS 62234-6198

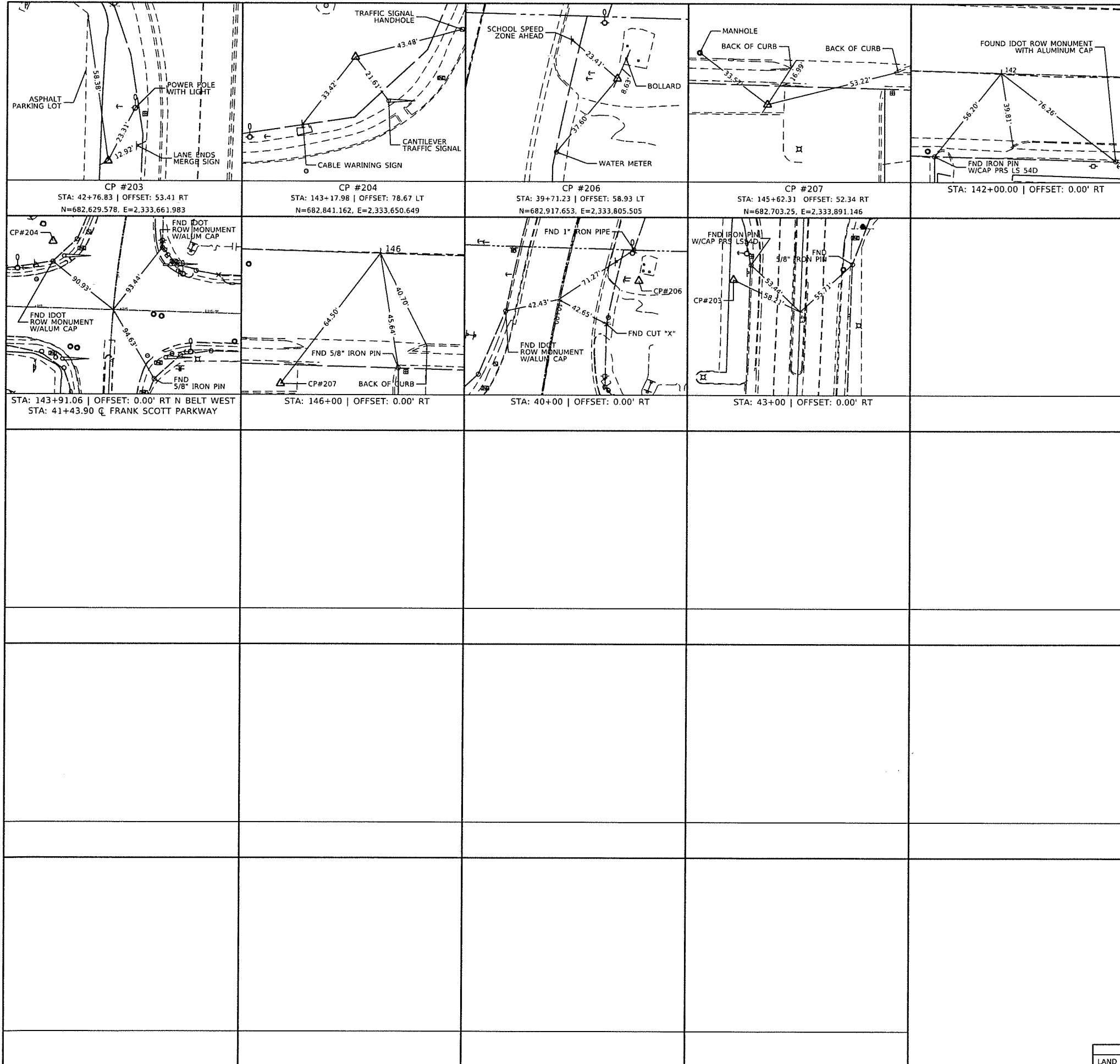
F.A.U. RTE.	SECTION	COUNTY	TOTAL SHEETS	SHEET NO.
9257	18-00290-11-TL	ST. CLAIR	25	16

COMPLETION DATE OF FIELD WORK PERFORMED	
LAND SURVEY: 08/22/2019	ROW STAKING: XX/XX/XXXX

PARCEL NO.	OWNER	TOTAL HOLDING ACRES	FEE SIMPLE ACQUISITION		REMAINDER ACRES	EASEMENTS		PERMANENT TAX NUMBER	PROPERTY ACQUIRED BY
			ACRES	SQ. FT.		TEMPORARY ACRES	SQ. FT.		
8207041	DONALD K. BURDEN TITLE #2124176BMT	0.3100 0.2100	0.0047	207	0.3053 0.2100	0.0000	0	07-13-0-201-002 08-07-0-305-034	

*FEE SIMPLE ACQUIRED IN THE NAME OF THE STATE OF ILLINOIS

PART OF SECTION 13, T1N, R9W, OF THE 3RD PM, ST. CLAIR COUNTY, ILLINOIS



SUBMITTAL DATE
02/15/2022

I HEREBY CERTIFY THAT THIS IS A CORRECT PLAT OF FRANK SCOTT PARKWAY WEST, COUNTY HIGHWAY 46, CONSTRUCTION SECTION 18-00290-11-TL AS SURVEYED AND STAKED FOR ST. CLAIR COUNTY, ILLINOIS

DATED _____

NORMAN ETLING, PE, COUNTY ENGINEER
ST. CLAIR COUNTY

PREPARED BY:
THOUVENOT, WADE & MOERCHEN, INC.
SWANSEA • WATERLOO • EDWARDSVILLE • ST. LOUIS • ST. CHARLES

CORPORATE OFFICE
4940 Old Collinsville Road
Swansea, Illinois 62226
Tel: 618.624.4488
Fax: 618.624.6688

IDPR DESIGN FIRM LICENSE NO. 184-001220



STATE OF ILLINOIS)
) SS
COUNTY OF ST. CLAIR)

I, EDGAR M BARNAL, AN ILLINOIS PROFESSIONAL LAND SURVEYOR, CERTIFY THAT I HAVE SURVEYED THE PLAT OF HIGHWAY, SHOWN HEREON, FOR A BOUNDARY SURVEY FOR THE PROPOSED PARCEL TO BE ACQUIRED BY ST. CLAIR COUNTY, ILLINOIS FOR A TURN LANE.

DATED 02-18-2022
Edgar M Barnal
EDGAR M BARNAL, PLS NO. 2750
LICENSE EXPIRATION DATE: 11/30/2022



ILLINOIS DEPARTMENT OF TRANSPORTATION
PLAT OF HIGHWAYS
FAU ROUTE 9257
SECTION 18-00290-11-TL
ST. CLAIR COUNTY
JOB NO. R-98-007-22
STA. 141+66 TO STA. 146+08

SCALE: 1" = 20'

SHEET 4 OF 4

ILLINOIS DEPARTMENT OF TRANSPORTATION
OFFICE OF HIGHWAYS PROJECT IMPLEMENTATION/REGION 5/DISTRICT B
1102 EASTPORT PLAZA DRIVE
COLLINSVILLE, ILLINOIS 62234-6198

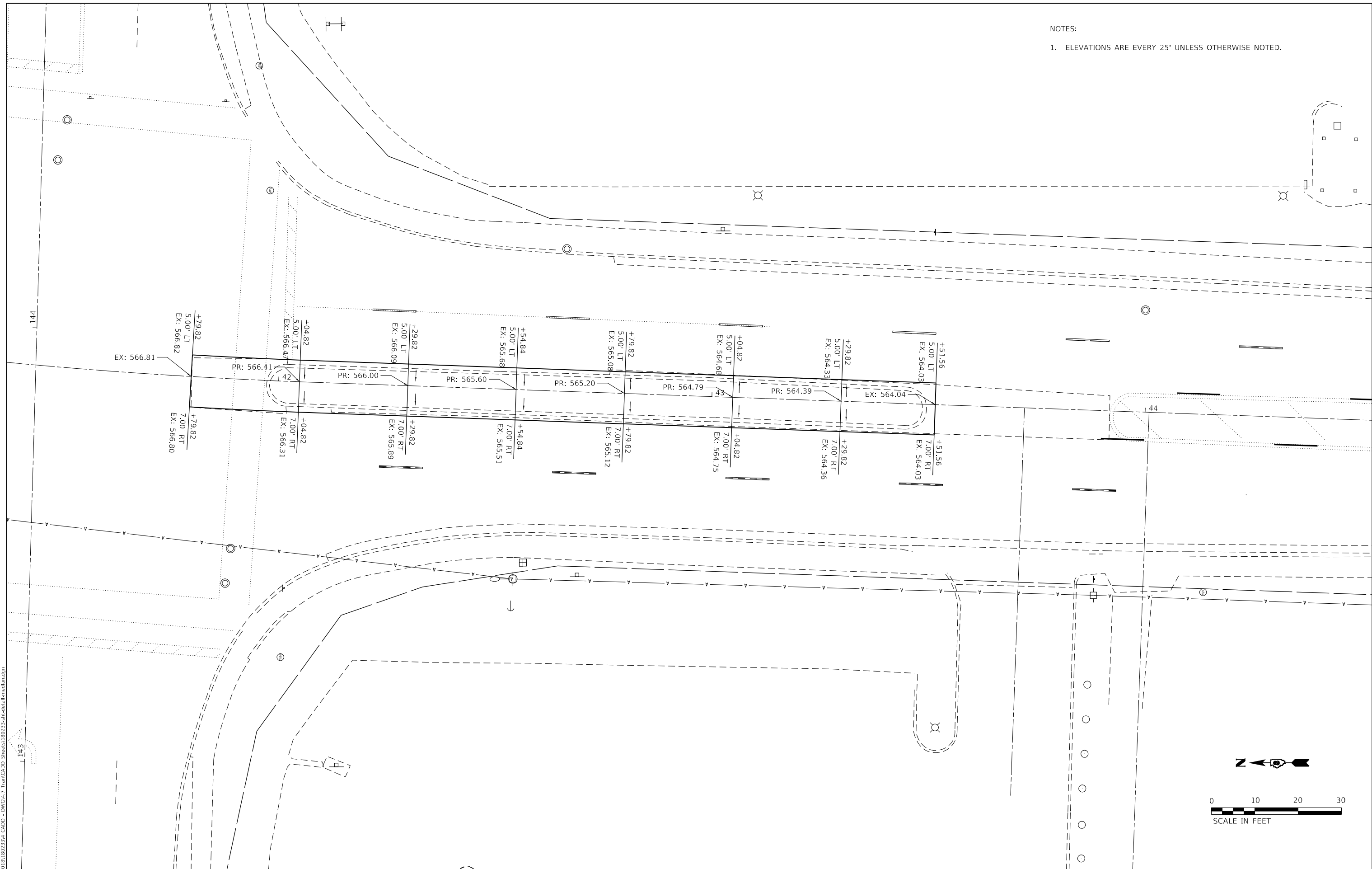
F.A.U. RTE.	SECTION	COUNTY	TOTAL SHEETS	SHEET NO.
9257	18-00290-11-TL	ST. CLAIR	25	17

COMPLETION DATE OF FIELD WORK PERFORMED

LAND SURVEY: 08/22/2019	ROW STAKING: XX/XX/XXXX	FED. ROAD DIST. NO.	ILLINOIS	FED. AID PROJECT
-------------------------	-------------------------	---------------------	----------	------------------

SHEET 1 IS A COVER SHEET

NOTES:
 1. ELEVATIONS ARE EVERY 25' UNLESS OTHERWISE NOTED.



MODEL: D:\p1\18180223\4_CADD - DWG\4.7_Tran\CADD_Sheets\180223-sh-detailed\medlan.dgn
 FILE NAME: P:\2018180223\4_CADD - DWG\4.7_Tran\CADD_Sheets\180223-sh-detailed\medlan.dgn



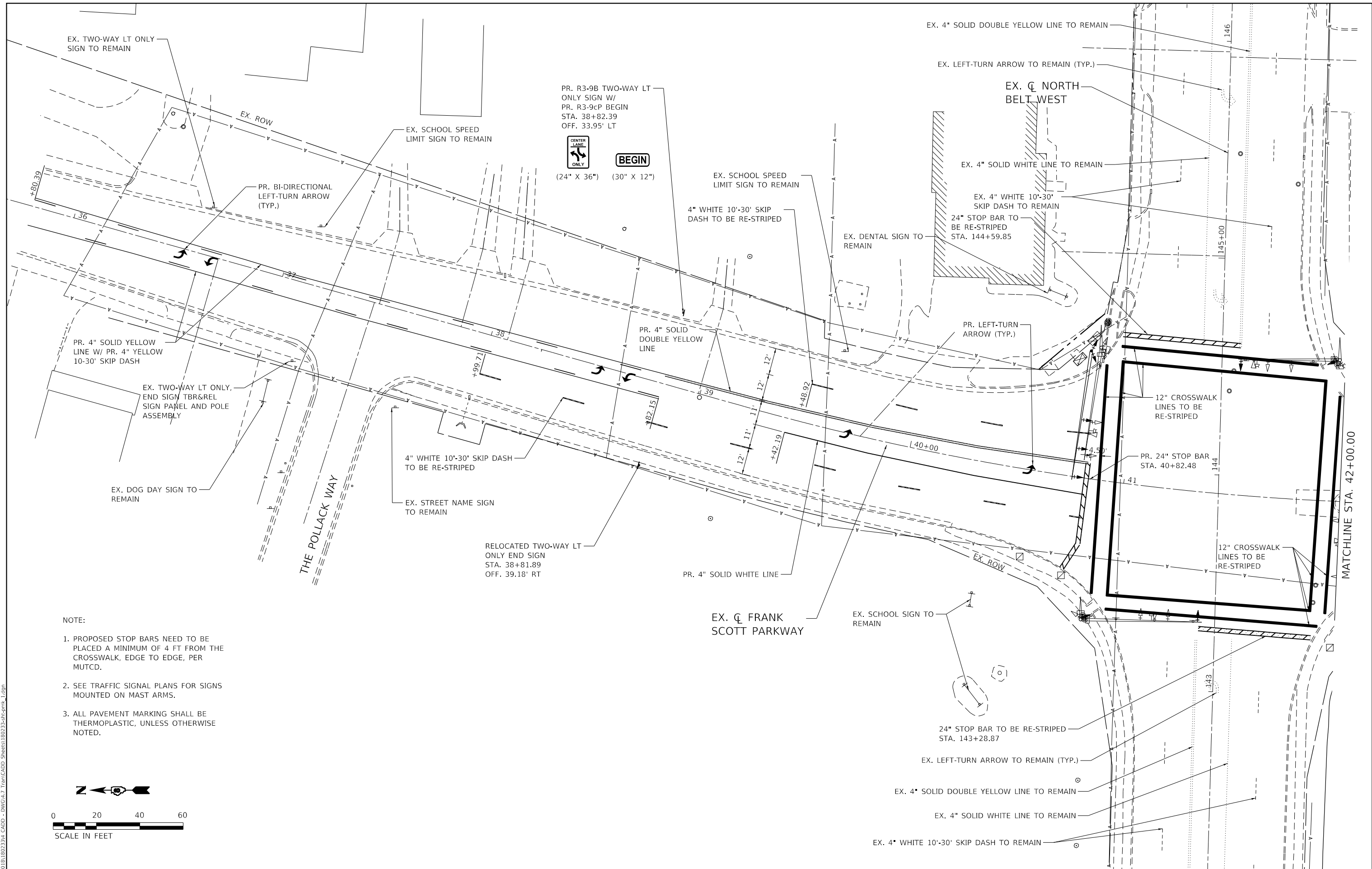
USER NAME = mschwierjohn	DESIGNED - MLS	REVISED -
	DRAWN - DL	REVISED -
PLOT SCALE = 20.0000 ' / in.	CHECKED - JWS	REVISED -
PLOT DATE = 8/24/2022	DATE - AUG 2022	REVISED -



ST. CLAIR COUNTY
 DEPARTMENT OF ROADS & BRIDGES

GEOMETRIC CENTER PAVEMENT DETAIL
 FRANK SCOTT PARKWAY WEST
 SCALE: 1" = 10' SHEET 1 OF 1 SHEETS STA. 41+79.84 TO STA. 43+91.81

F.A.U. ROUTE	SECTION	COUNTY	TOTAL SHEETS	SHEET NO.
9256	18-00290-11-TL	ST. CLAIR	25	18
ILLINOIS FED. AID PROJECT			CONTRACT NO. 97788	



NOTE:

1. PROPOSED STOP BARS NEED TO BE PLACED A MINIMUM OF 4 FT FROM THE CROSSWALK, EDGE TO EDGE, PER MUTCD.
2. SEE TRAFFIC SIGNAL PLANS FOR SIGNS MOUNTED ON MAST ARMS.
3. ALL PAVEMENT MARKING SHALL BE THERMOPLASTIC, UNLESS OTHERWISE NOTED.



SCALE IN FEET

MODEL: D:\64bit...
 FILE NAME: P:\2018110223\4_CADD - DWG\4.7_TrafficCADD_Sheets\180223-shc-pmk_1.dgn



USER NAME = mschwierjohn	DESIGNED - MLS	REVISED -
	DRAWN - DL	REVISED -
PLOT SCALE = 40,0000 ' / in.	CHECKED - JWS	REVISED -
PLOT DATE = 8/24/2022	DATE - AUG 2022	REVISED -



**ST. CLAIR COUNTY
DEPARTMENT OF ROADS & BRIDGES**

**PAVEMENT MARKING AND SIGNAGE SHEET
FRANK SCOTT PARKWAY WEST**

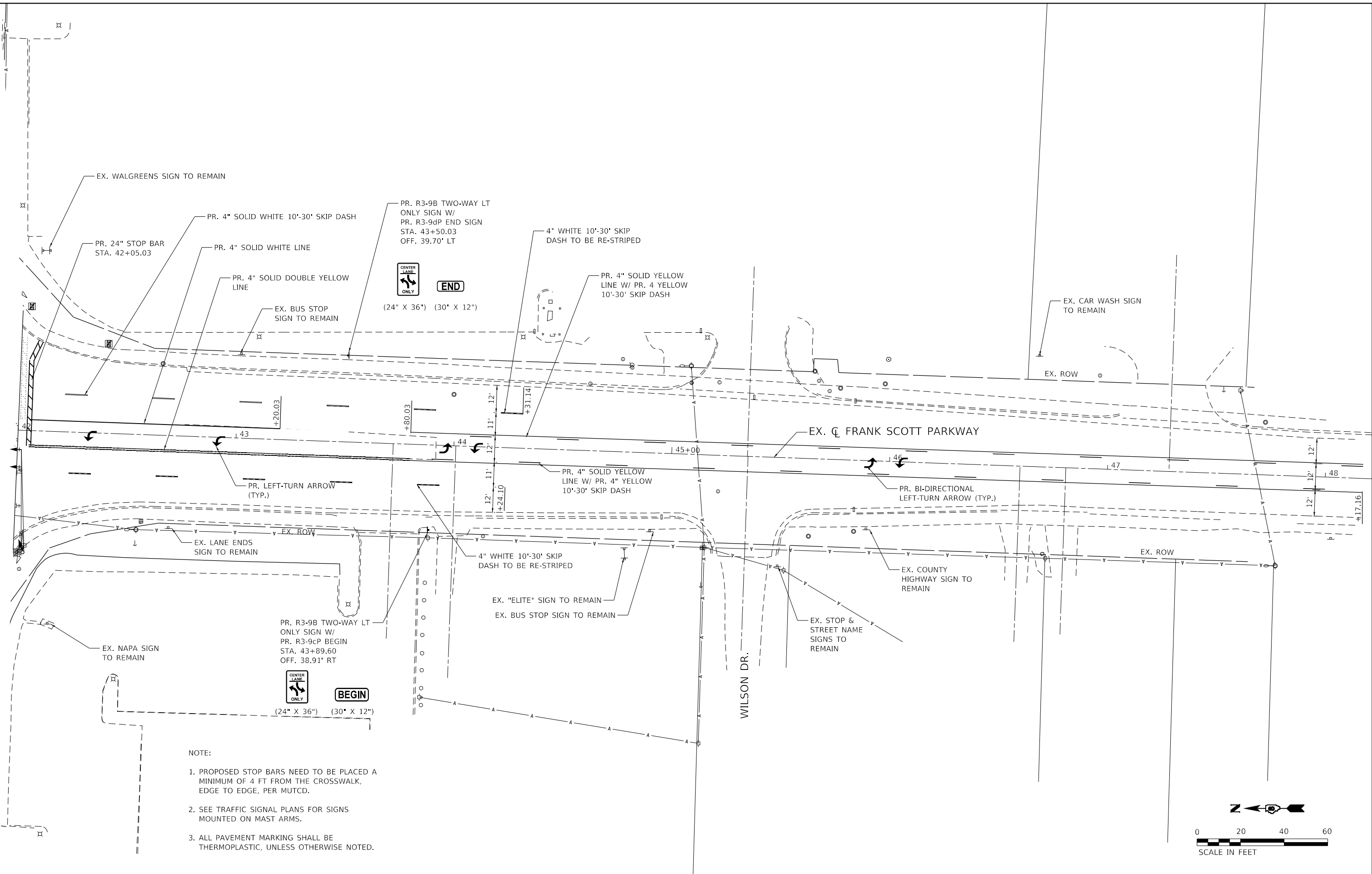
SCALE: 1" = 20' SHEET 1 OF 2 SHEETS STA. 35+80.15 TO STA. 42+00.00

F.A.U. ROUTE	SECTION	COUNTY	TOTAL SHEETS	SHEET NO.
9256	18-00290-11-TL	ST. CLAIR	25	19
CONTRACT NO. 97788				
ILLINOIS FED. AID PROJECT				

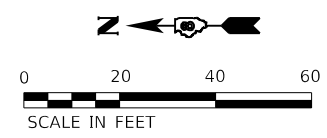
MATCHLINE STA. 42+00.00

MATCHLINE STA. 42+00.00

MODEL: D:\64bit
 FILE NAME: P:\2018110223\4_CADD - DWG\4.7_Traffic\ADD_Sheet1180223-shc.dwg
 2.dgn



- NOTE:
1. PROPOSED STOP BARS NEED TO BE PLACED A MINIMUM OF 4 FT FROM THE CROSSWALK, EDGE TO EDGE, PER MUTCD.
 2. SEE TRAFFIC SIGNAL PLANS FOR SIGNS MOUNTED ON MAST ARMS.
 3. ALL PAVEMENT MARKING SHALL BE THERMOPLASTIC, UNLESS OTHERWISE NOTED.



USER NAME = mschwierjohn	DESIGNED - MLS	REVISED -
DRAWN - DL	REVISED -	
PLOT SCALE = 40.0000 ' / in.	CHECKED - JWS	REVISED -
PLOT DATE = 8/24/2022	DATE - AUG 2022	REVISED -



**ST. CLAIR COUNTY
 DEPARTMENT OF ROADS & BRIDGES**

**PAVEMENT MARKING AND SIGNAGE SHEET
 FRANK SCOTT PARKWAY WEST**

SCALE: 1" = 20' SHEET 2 OF 2 SHEETS STA. 42+00.00 TO STA. 48+17.16

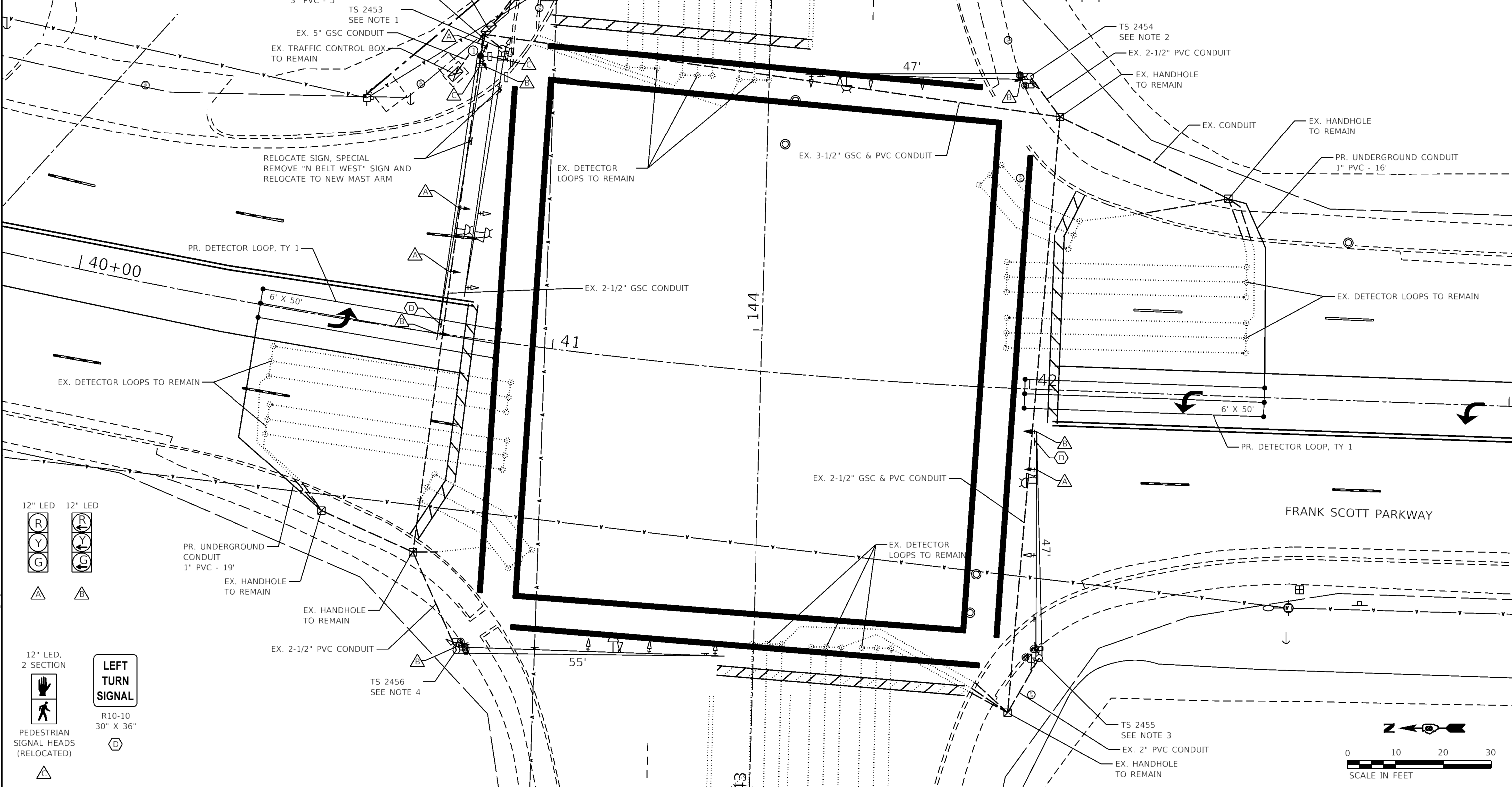
F.A.U. ROUTE	SECTION	COUNTY	TOTAL SHEETS	SHEET NO.
9256	18-00290-11-TL	ST. CLAIR	25	20
CONTRACT NO. 97788				
ILLINOIS FED. AID PROJECT				

MAST ARM SCHEDULE			
LOCATION STA. OFFSET	ARM LENGTH	FOUNDATION DIAMETER	FOUNDATION DEPTH
① 40+76.44, 58.53' LT	60'	42"	21'-0"

MAST ARM FOUNDATION DETAILS SHALL BE IN ACCORDANCE WITH STANDARD 787001 EXCEPT FOR LENGTHS AS MODIFIED BY THE MAST ARM SCHEDULE. FOUNDATION DEPTH IS BASED ON ASSUMED MAST ARM ASSEMBLY AND POLE CONFIGURATIONS. MAST ARM ASSEMBLY AND POLE SHOP DRAWINGS SHALL BE SUBMITTED TO THE ENGINEER FOR FINAL REVIEW AND APPROVAL OF THE FOUNDATION DEPTHS.

* FOR FOUNDATIONS DRILLED IN BACKSLOPE REGIONS, DEPTH SHALL BE MEASURED FROM THE FINISH GRADE AT THE CENTERLINE OF THE FOUNDATION.

- NOTE:
1. REMOVE EX. CONC. FOUNDATION AND TRAFFIC SIGNAL EQUIPMENT. EXISTING TRAFFIC SIGNAL EQUIPMENT INCLUDES BUT NOT LIMITED TO THE 52' MAST ARM ASSEMBLY AND POST AND SIGNAL HEADS. REMOVE THE CONDUIT AND CABLE BETWEEN THE EX. MAST ARM TO BE REMOVED AND EX. HANDHOLE TO REMAIN, COST INCLUDED IN COST OF REMOVE EX. TRAFFIC SIGNAL EQUIPMENT. RELOCATE EX. E.V.P.S. DETECTOR AND BEACON.
 2. REMOVE EX. SIGNAL HEAD (SB FAR LT), INSTALL NEW HEAD ON EX. MAST ARM.
 3. REMOVE EX. SIGNAL HEAD (SB THRU/LT), INSTALL NEW HEADS ON EX. MAST ARM.
 4. REMOVE EX. SIGNAL HEAD (NB FAR LT), INSTALL NEW HEAD ON EX. MAST ARM.
 5. LEFT-TURNS ARE PROTECTED ONLY.



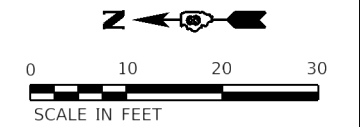
12" LED

 12" LED

 12" LED, 2 SECTION

 PEDESTRIAN SIGNAL HEADS (RELOCATED)
 LEFT TURN SIGNAL

 R10-10
 30" X 36"



MODEL: D:\dwg\11\1802324.dwg
 FILE NAME: P:\CADD\11\1802324.dwg
 DWG: 11\1802324.dwg
 T:\CADD_Sheet\11\1802324.dwg
 2/26/20



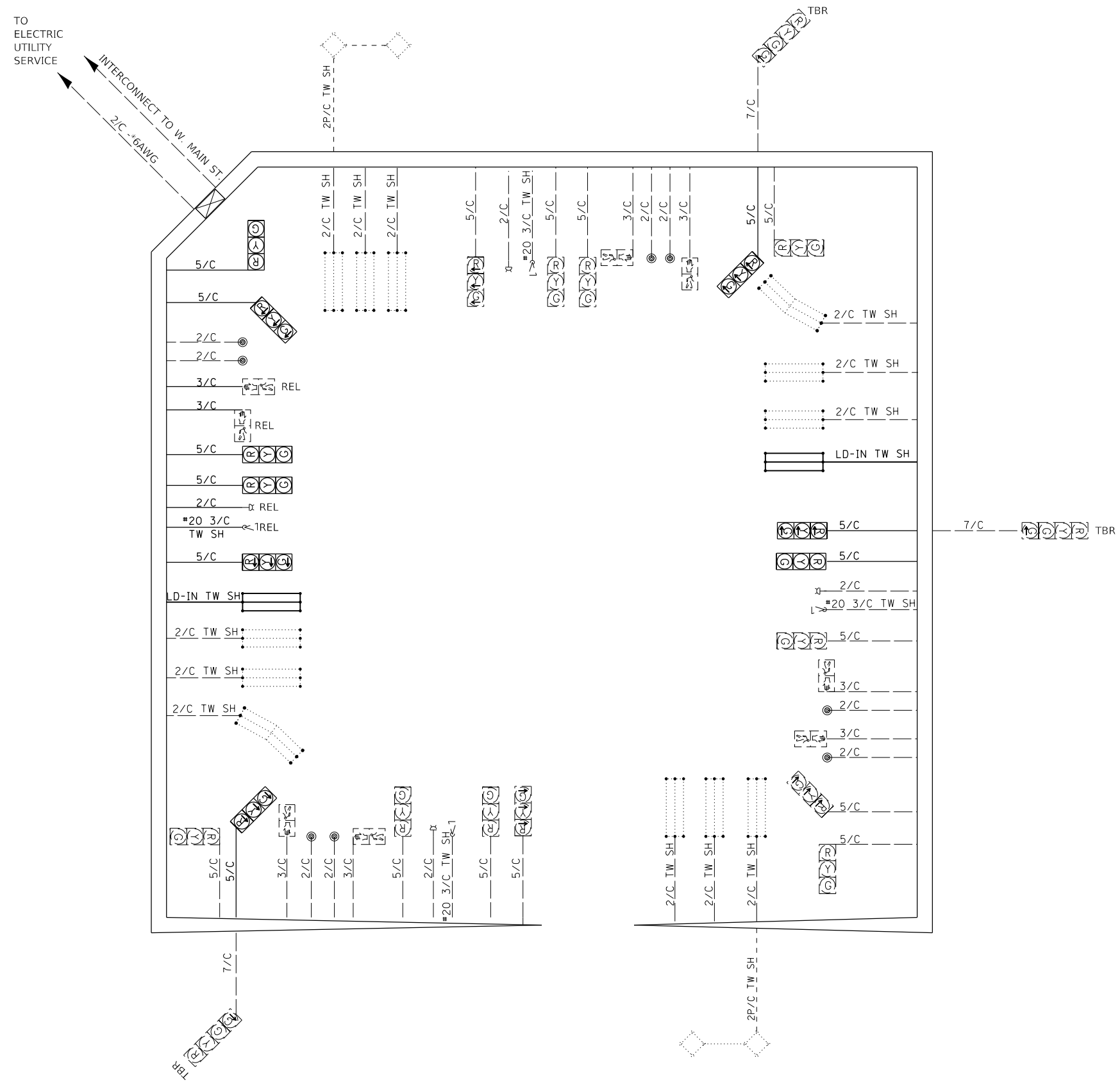
USER NAME = mschwierjohn	DESIGNED - MLS	REVISED -
	DRAWN - DL	REVISED -
PLOT SCALE = 20.0000' / 1"	CHECKED - JWS	REVISED -
PLOT DATE = 8/24/2022	DATE - AUG 2022	REVISED -



ST. CLAIR COUNTY
 DEPARTMENT OF ROADS & BRIDGES

TRAFFIC SIGNAL PLAN
 FRANK SCOTT PARKWAY WEST
 SCALE: 1" = 10'
 SHEET 2 OF 4 SHEETS
 STA. TO STA.

F.A.U. ROUTE	SECTION	COUNTY	TOTAL SHEETS	SHEET NO.
9256	18-00290-11-TL	ST. CLAIR	25	22
			CONTRACT NO. 97788	
ILLINOIS FED. AID PROJECT				



LEGEND

---	EXISTING CABLE
---	PROPOSED CABLE
TW SH	INDICATES TWISTED SHIELDED CABLE
2/C	INDICATES NUMBER OF CONDUCTORS IN CABLE
⊗	EXISTING CONTROLLER
⚠	EXISTING EMERGENCY VEHICLE SYSTEM DETECTOR (E.V.P.S.)
⊕	EXISTING (E.V.P.S.) CONFIRMATION BEACON
⊙	EXISTING PEDESTRIAN PUSH-BUTTON
⊙	EXISTING PEDESTRIAN SIGNAL HEAD
⊙	EXISTING 12" TRAFFIC SIGNAL SECTION. LETTER INDICATES COLOR.
⊙	PROPOSED 12" TRAFFIC SIGNAL SECTION. LETTER INDICATES COLOR.
⊙	EXISTING DETECTOR LOOP, CD INDICATES CALL DELAY
⊙	PROPOSED DETECTOR LOOP, CD INDICATES CALL DELAY
REL	RELOCATED

MODEL: D:\64bit
 FILE NAME: P:\2018110223\4_CADD...DWG\4.7_TrafficCADD_Sheets\180223-shc-45_3.dgn



USER NAME = mschwierjohn	DESIGNED - MLS	REVISED -
PLOT SCALE = 20.0000" / in.	DRAWN - DL	REVISED -
PLOT DATE = 8/24/2022	CHECKED - JWS	REVISED -
	DATE - AUG 2022	REVISED -



ST. CLAIR COUNTY
DEPARTMENT OF ROADS & BRIDGES

TRAFFIC SIGNAL CABLE DIAGRAM
FRANK SCOTT PARKWAY WEST

SCALE: NTS SHEET 3 OF 4 SHEETS STA. TO STA.

F.A.U. ROUTE	SECTION	COUNTY	TOTAL SHEETS	SHEET NO.
9256	18-00290-11-TL	ST. CLAIR	25	23
ILLINOIS FED. AID PROJECT			CONTRACT NO. 97788	

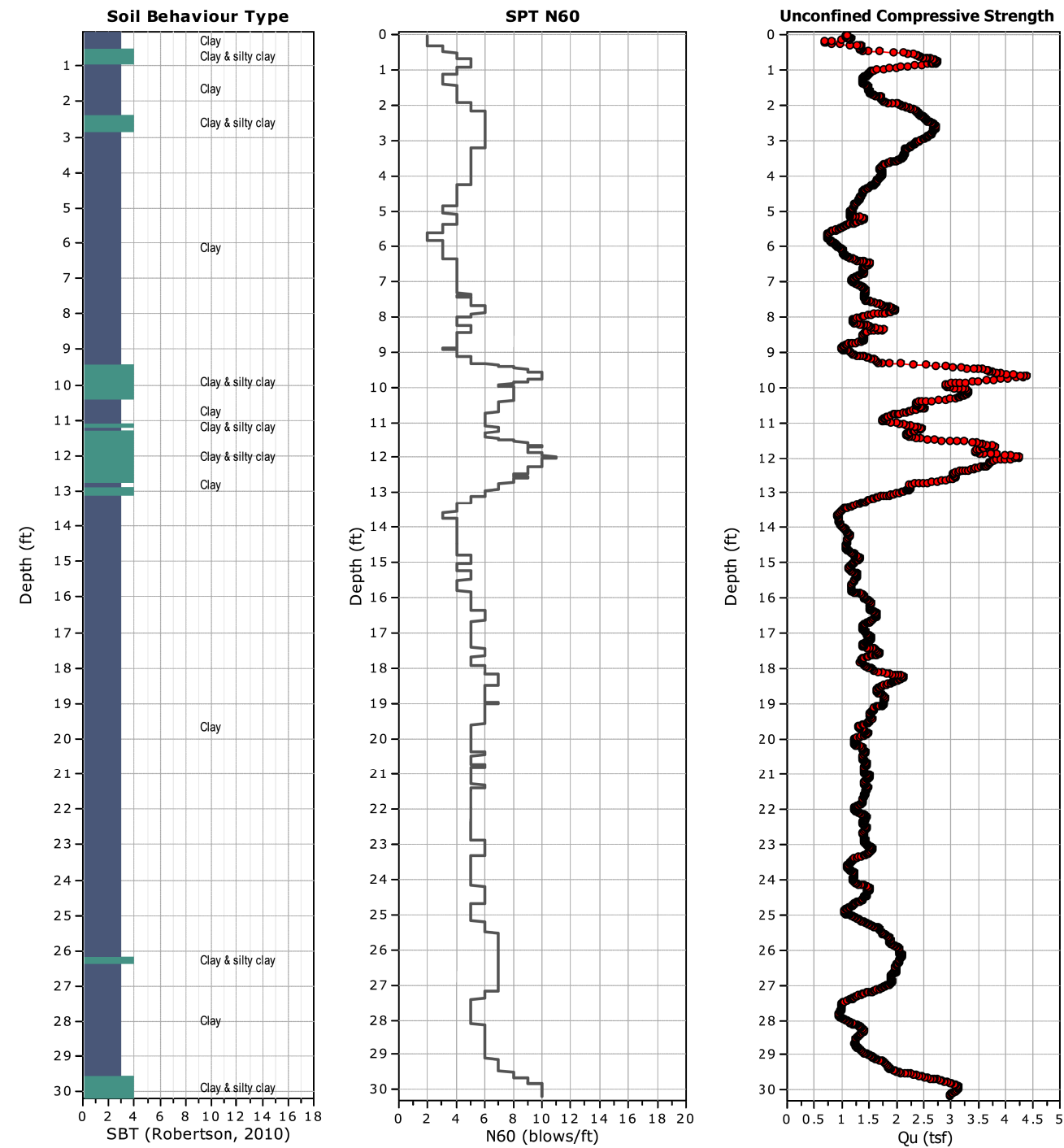


SCI Engineering, Inc.
 650 Pierce Boulevard, O'Fallon, Illinois 62269
 Geotechnical Engineers
 www.sciengineering.com

Project: Frank Scott Parkway at North Belt West (SCI No. 2019-0091.10)
Location: Beleville, Illinois

CPT: B-1

Total depth: 30.18 ft, Date: 8/23/2021
 Surface Elevation: 567.00 ft



CPeT-IT v.2.1.1.8 - CPTU data presentation & interpretation software - Report created on: 8/23/2021, 6:35:03 PM
 Project file: N:\Projects\2019\2019-0091 Frank Scott Parkway at North Belt West\GS\CPT\B-1 processed.cpt

MODEL: D:\cadd\...
 FILE: NAME: P:\2018\180223\4_CADD - DWG\4.7_TrafficCADD_Sheets\180223-shc15_4.dgn



USER NAME = mschwierjohn	DESIGNED - MLS	REVISED -
	DRAWN - DL	REVISED -
PLOT SCALE = 40,0000 ' / in.	CHECKED - JWS	REVISED -
PLOT DATE = 8/24/2022	DATE - AUG 2022	REVISED -



ST. CLAIR COUNTY
DEPARTMENT OF ROADS & BRIDGES

TRAFFIC SIGNAL SOIL BORINGS
FRANK SCOTT PARKWAY WEST

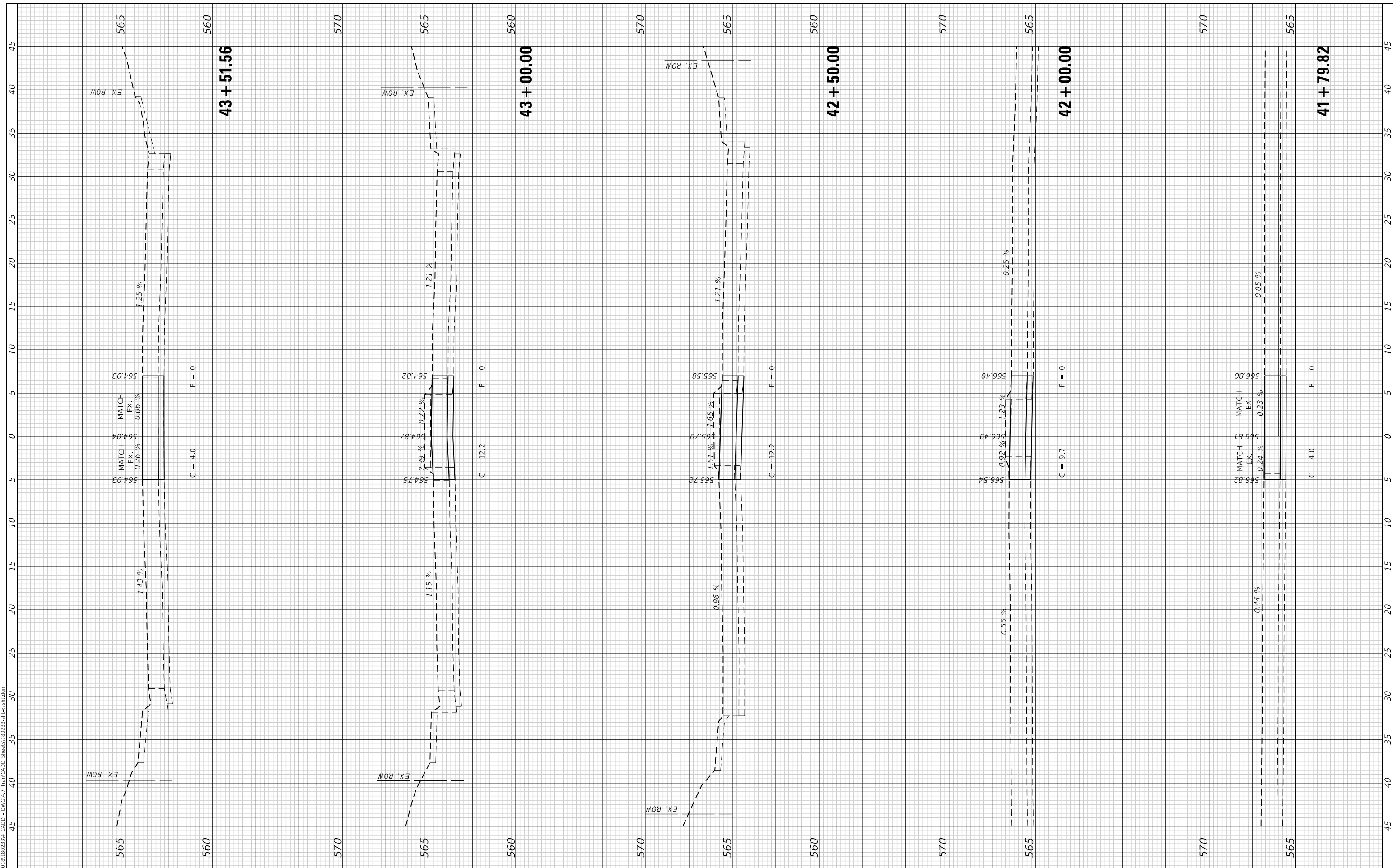
SCALE: NTS SHEET 4 OF 4 SHEETS STA. TO STA.

F.A.U. ROUTE	SECTION	COUNTY	TOTAL SHEETS	SHEET NO.
9256	18-00290-11-TL	ST. CLAIR	25	24
ILLINOIS			CONTRACT NO. 97788	
FED. AID PROJECT				

FINAL SURVEY NO.	SURVEYED PLOTTED AREAS CHECKED	BY	DATE

ORIGINAL SURVEY NO.	SURVEYED PLOTTED AREAS CHECKED	BY	DATE

MODEL: Defn01r
 FILE NAME: P:\2021\18022301 CAD - DWG\4-17 Tran\CADD_Sheets\180223-SP-CrossSec.dwg



USER NAME = mschwierjohn	DESIGNED - MLS	REVISED -
PLOT SCALE = 10.0000' / in.	DRAWN - MLS	REVISED -
PLOT DATE = 8/24/2022	CHECKED - JWS	REVISED -
	DATE - AUG 2022	REVISED -



ST. CLAIR COUNTY
DEPARTMENT OF ROADS & BRIDGES

CROSS SECTIONS
FRANK SCOTT PARKWAY WEST

SCALE: 1"=10' SHEET 1 OF 1 SHEETS STA. 41+79.82 TO STA. 43+51.56

F.A.U. ROUTE	SECTION	COUNTY	TOTAL SHEETS	SHEET NO.
9256	18-00290-11-TL	ST. CLAIR	25	25
ILLINOIS FED. AID PROJECT			CONTRACT NO. 97788	