

SECTION 3, TOWNSHIP 33, RANGE 1E
 SECTION 4, TOWNSHIP 33, RANGE 1E
 SECTION 9, TOWNSHIP 33, RANGE 1E
 SECTION 10, TOWNSHIP 33, RANGE 1E

03-10-2023 LETTING ITEM 161

STATE OF ILLINOIS
 DEPARTMENT OF TRANSPORTATION

F.A.U. RTE.	SECTION	COUNTY	TOTAL SHEETS	SHEET NO.
6104	22-00084-00-RS	LASALLE	7	1
ILLINOIS CONTRACT NO.			87807	

INDEX OF SHEETS

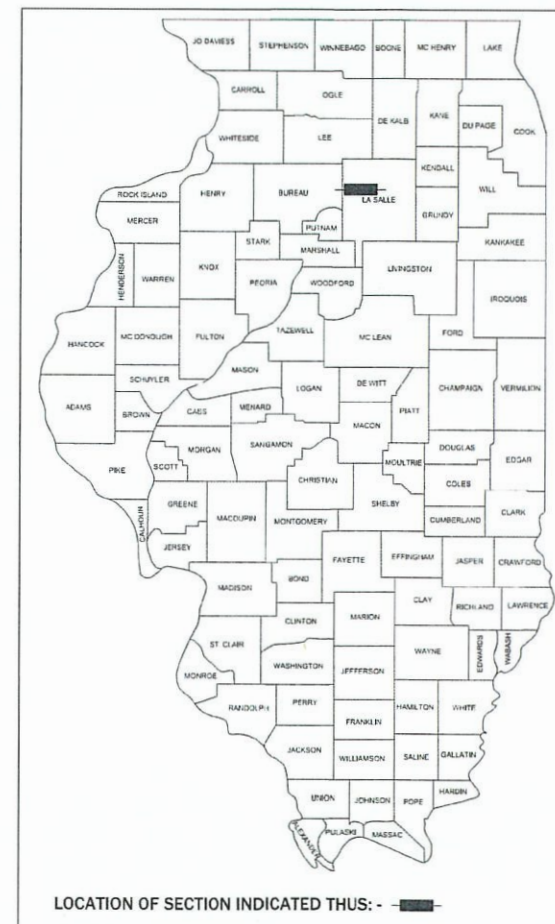
1. COVER SHEET
2. GENERAL NOTES & SUMMARY OF QUANTITIES
3. TYPICAL SECTIONS
4. - 7. PLAN SHEETS

HIGHWAY STANDARDS

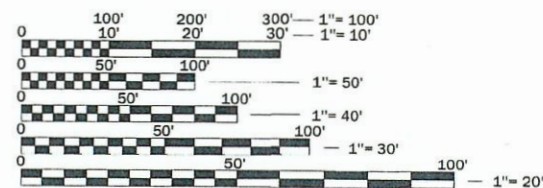
000001-08	STANDARD SYMBOLS, ABBREVIATIONS AND PATTERNS
280001-07	TEMPORARY EROSION CONTROL SYSTEMS
606001-08	CONCRETE CURB TYPE B AND COMBINATION CONCRETE CURB AND GUTTER
701001-02	OFF-ROAD OPERATIONS, 2L, 2W, MORE THAN 15' AWAY
701006-05	OFF-ROAD OPERATIONS, 2L, 2W, 15' TO 24" FROM PAVEMENT EDGE
701301-04	LANE CLOSURE, 2L, 2W, SHORT TIME OPERATIONS
701311-03	LANE CLOSURE 2L, 2W MOVING OPERATIONS - DAY ONLY
701501-06	URBAN LANE CLOSURE, 2L, 2W, UNDIVIDED
701901-08	TRAFFIC CONTROL DEVICES
780001-05	TYPICAL PAVEMENT MARKINGS

PROPOSED PLANS FOR
 FEDERAL AID HIGHWAY

CITY OF LA SALLE
 FAU 6104 (CHARTRES STREET)
 SECTION 22-00084-00-RS
 PROJECT A583(027)
 LASALLE COUNTY
 C-93-019-23

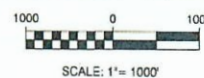
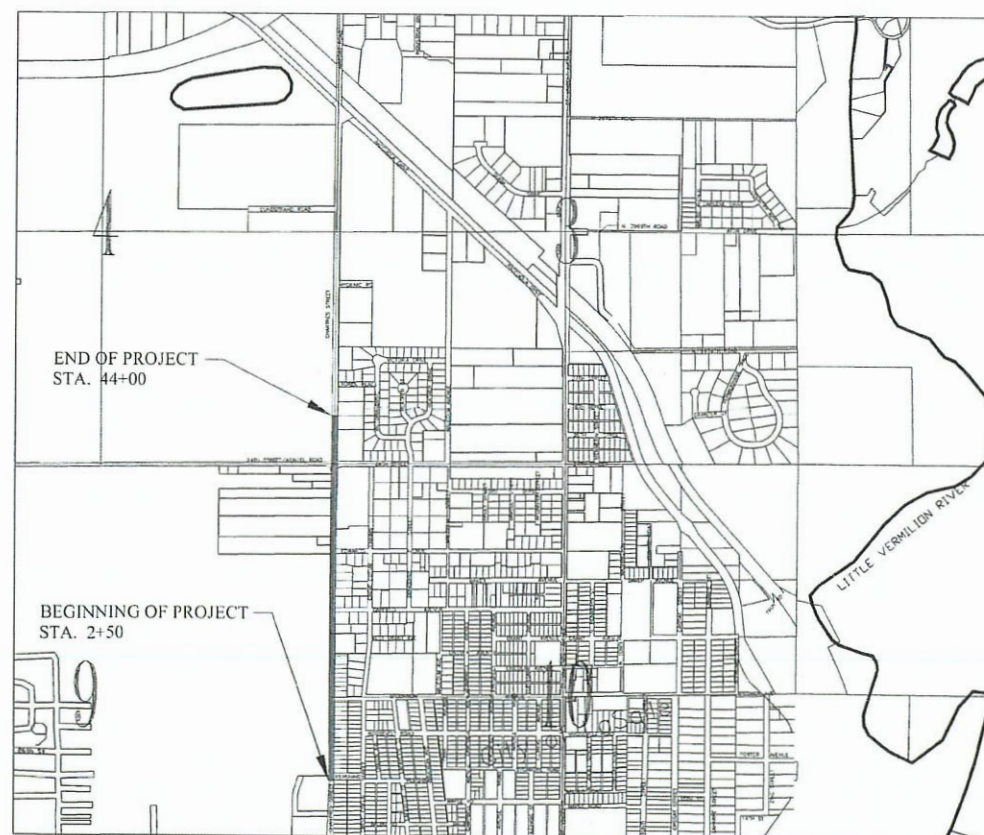


FAU 6104 (CHARTRES STREET)
 FUNCTIONAL CLASSIFICATION: MINOR ARTERIAL
 ADT = 2850 (2020)
 POSTED SPEED = 30 MPH



FULL SIZE PLANS HAVE BEEN PREPARED USING STANDARD ENGINEERING SCALES. REDUCED SIZED PLANS WILL NOT CONFORM TO STANDARD SCALES. IN MAKING MEASUREMENTS ON REDUCED PLANS, THE ABOVE SCALES MAY BE USED.

J.U.L.I.E.
 JOINT UTILITY LOCATION INFORMATION FOR EXCAVATION
 1-800-892-0123
 OR 811



GROSS LENGTH = 4,150 FT. = 0.786 MILES
 NET LENGTH = 4,150 FT. = 0.786 MILES

PREPARED BY OR UNDER THE DIRECT SUPERVISION OF:

Brian D. Brown

DATED THIS 30TH DAY OF JANUARY, 2023



STATE OF ILLINOIS
 DEPARTMENT OF TRANSPORTATION

SUBMITTED 1-31-2023
 JEFF GROVE, MAYOR - CITY OF LA SALLE

PASSED JANUARY 31 2023
 DISTRICT 3, LOCAL ROADS AND STREET ENGINEER

RELEASED FOR BID BASED ON LIMITED REVIEW JANUARY 31 2023
 REGION 2 ENGINEER

PRINTED BY THE AUTHORITY
 OF THE STATE OF ILLINOIS

DISTRICT 3 NO. (815) 434-6131
 CONTRACT NO. 87807

FAU RTE	SECTION	COUNTY	TOTAL SHEETS	SHEET NO
6104	22-00084-00-RS	LASALLE	7	2
FED ROAD DIST NO	ILLINOIS	CONTRACT NO. 87807		

GENERAL NOTES

THE THICKNESS OF THE HOT-MIX ASPHALT SHOWN ON THE PLANS IS A NOMINAL THICKNESS. DEVIATIONS FROM NOMINAL THICKNESS WILL BE PERMITTED WHEN SUCH DEVIATIONS OCCUR DUE TO REGULARITIES IN THE EXISTING SURFACE OR BASE ON WHICH THE HOT-MIX ASPHALT IS PLACED.

THE ENGINEER WILL BE THE SOLE JUDGE CONCERNING CURING TIME FOR VARIOUS HOT-MIX ASPHALT LIFTS.

FOR STABILIZATION, ALL TYPE III BARRICADES WILL REQUIRE A MINIMUM OF FOUR (4) SAND BAGS PER BARRICADE.

CONTRACTOR SHALL NOTIFY J.U.L.I.E. AT LEAST 48 HOURS PRIOR TO EXCAVATION.

CONTRACTOR SHALL INSTALL "ROAD CONSTRUCTION AHEAD" SIGNS ON ALL CROSS ROADWAYS, PLACED EAST AND WEST OF CHARTRES STREET. SIGNS TO BE 48" X 48" WITH A BLACK DIRECTIONAL ARROW ON FLUORESCENT ORANGE BACKGROUND.

THE FOLLOWING RATES OF APPLICATION HAVE BEEN USED IN CALCULATING PLAN QUANTITIES:

BITUMINOUS MATERIAL (TACK COAT)	
SURFACE TYPE	RESIDUAL RATE
AGGREGATE BASES	N/A
CONCRETE, EXISTING HMA, AND MILLED HMA PAVEMENT	0.05 LBS/SQ FT
NEW HMA AND BRICK	0.025 LBS/SQ FT

ESTIMATED TRUCK APPLICATION RATE USED FOR CALCULATING PLAN QUANTITIES

CONSTRUCTION TYPE CODE 005 SUMMARY OF QUANTITIES

ITEM CODE	ITEM DESCRIPTION	QUANTITY	UNIT
40600290	BITUMINOUS MATERIALS (TACK COAT)	9424	LBS
40602965	HOT-MIX ASPHALT BINDER COURSE, IL 9.5FG, N50	977	TON
40604000	HOT-MIX ASPHALT SURFACE COURSE, IL 9.5FG, MIX "C", N50	977	TON
Δ 44000158	HOT-MIX ASPHALT SURFACE REMOVAL, 2-1/4"	13961	SY
Δ 44000500	COMBINATION CURB AND GUTTER REMOVAL	602	FT
Δ 60255500	MANHOLES TO BE ADJUSTED	7	EACH
Δ 60260100	INLETS TO BE ADJUSTED	15	EACH
Δ 60266600	VALVE BOXES TO BE ADJUSTED	10	EACH
60605000	COMBINATION CONCRETE CURB AND GUTTER, TY B-6.24	602	FT
67100100	MOBILIZATION	1	L.S.
70102620	TRAFFIC CONTROL AND PROTECTION 701501	1	L.S.
* 78000100	THERMOPLASTIC PAVEMENT MARKING - LETTERS AND SYMBOLS	95	SF
* 78000200	THERMOPLASTIC PAVEMENT MARKING - LINE 4"	3792	FT
* 78000500	THERMOPLASTIC PAVEMENT MARKING - LINE 8"	328	FT
* 78000600	THERMOPLASTIC PAVEMENT MARKING - LINE 12"	182	FT
* 78000650	THERMOPLASTIC PAVEMENT MARKING - LINE 24"	192	FT
* SPECIALTY ITEM			
Δ SPECIAL PROVISION			

DRAWN BY: BOB/JS

CAD:

REVISIONS

DATE	BY



THE CITY OF
LaSalle
ILLINOIS

FAU 6104 (CHARTRES STREET)
SECTION 22-00084-00-RS
CITY OF LA SALLE, LA SALLE COUNTY

GENERAL NOTES &
SUMMARY OF QUANTITIES

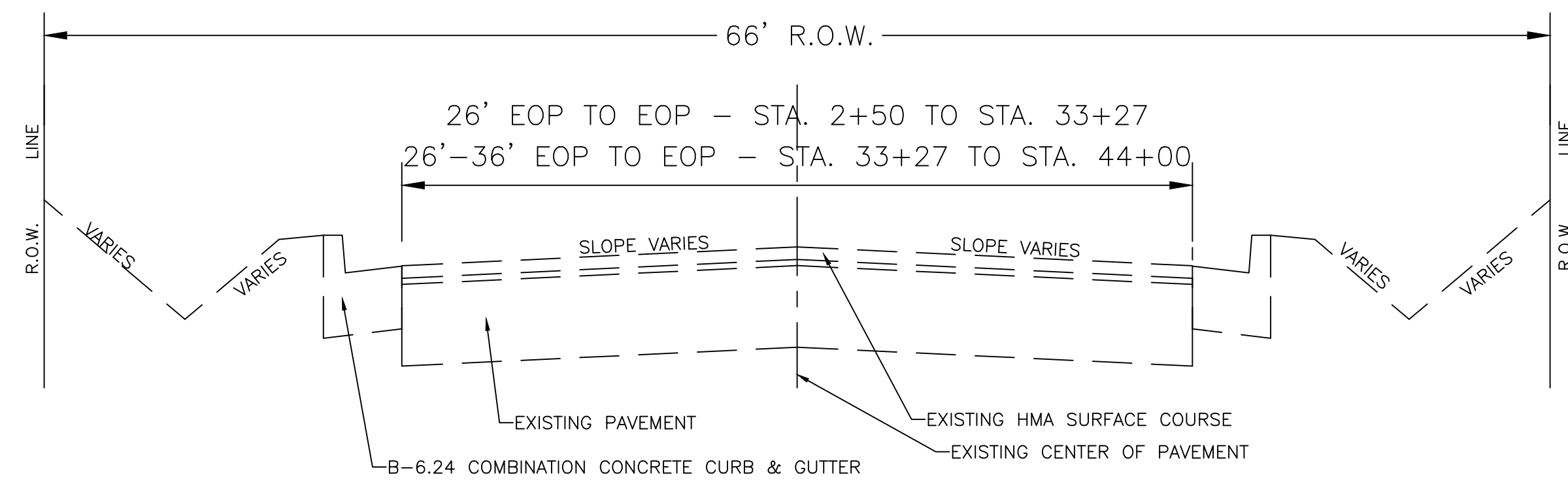
SCALE: N/A

SHEET 2

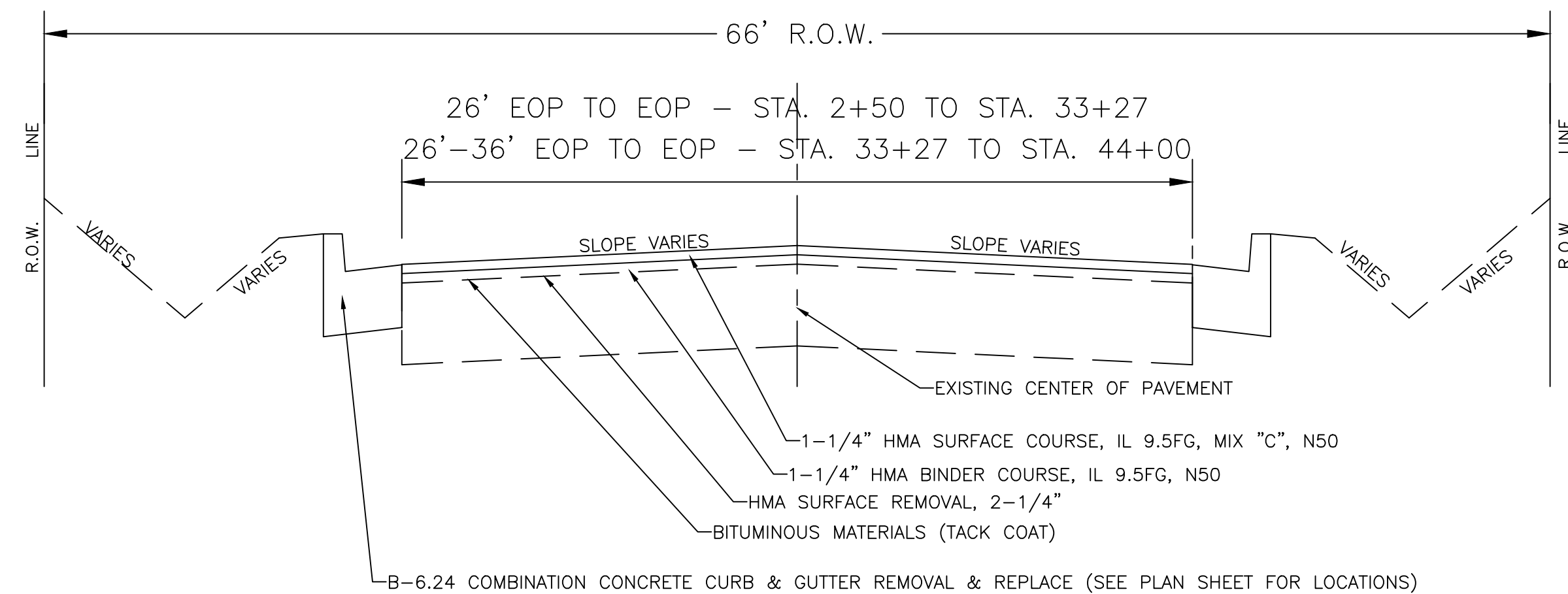
FILE NO.:

OF 7

F.A.U. RTE.	SECTION	COUNTY	TOTAL SHEETS	SHEET NO.
6104	22-00084-00-RS	LASALLE	7	3
FED. ROAD DIST. NO.	ILLINOIS	CONTRACT NO. 87807		



EXISTING TYPICAL SECTION
2+50 to 44+00
CHARTRES STREET
 N.T.S.



PROPOSED TYPICAL SECTION
2+50 to 44+00
CHARTRES STREET
 N.T.S.

HOT-MIX ASPHALT REQUIREMENT TABLES		
LOCATION(S):	ENTIRE PROJECT	ENTIRE PROJECT
MIXTURE USE(S):	HMA BINDER	HMA SURFACE
BINDER GRADE (PG):	PG 64-22	PG 64-22
DESIGN AIR VOIDS:	4.0% @ N50	4.0% @ N50
MIXTURE COMPOSITION (MIXTURE GRADATION):	IL 9.5FG	IL 9.5FG
FRICTION AGGREGATE:		MIXTURE C
MIXTURE WEIGHT:	112.0 LB/IN/SY	112.0 LB/IN/SY
QUALITY MANAGEMENT PROGRAM:	QCQA	QCQA
SUBLOT SIZE:	N/A	N/A
DENSITY TESTING METHOD:	NUCLEAR	NUCLEAR
MATERIAL TRANSFER DEVICE (REQUIRED)	NO	NO

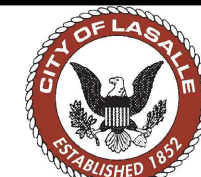
87807 - CHARTRES STREET IN LA SALLE

DRAWN BY: BDB/JS

CAD:

REVISIONS

DATE BY



THE CITY OF
LaSalle
 ILLINOIS

FAU 6104 (CHARTRES STREET)
 SECTION 22-00084-00-RS
 CITY OF LA SALLE, LA SALLE COUNTY

TYPICAL SECTIONS

SCALE: N/A

SHEET 3

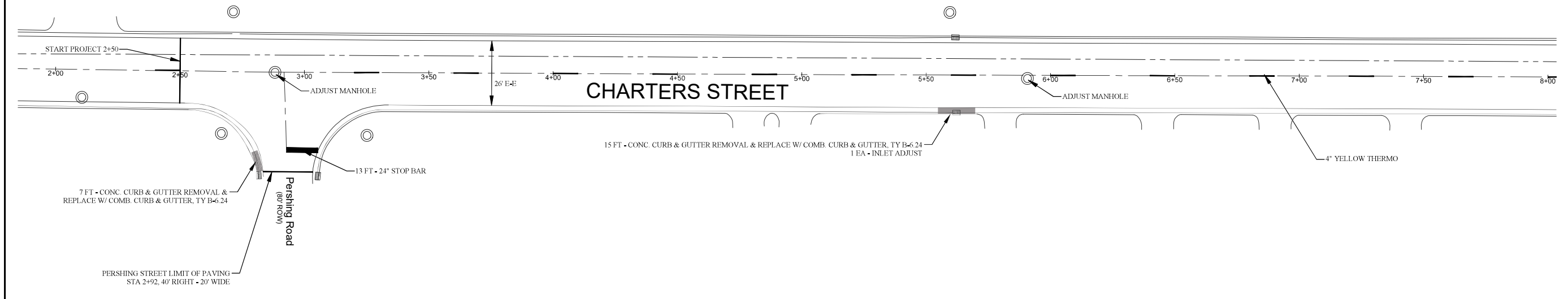
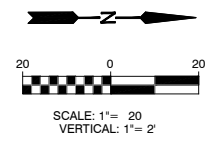
CHECKED BY: BRIAN BROWN

DATE:

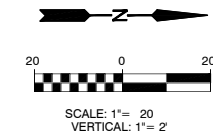
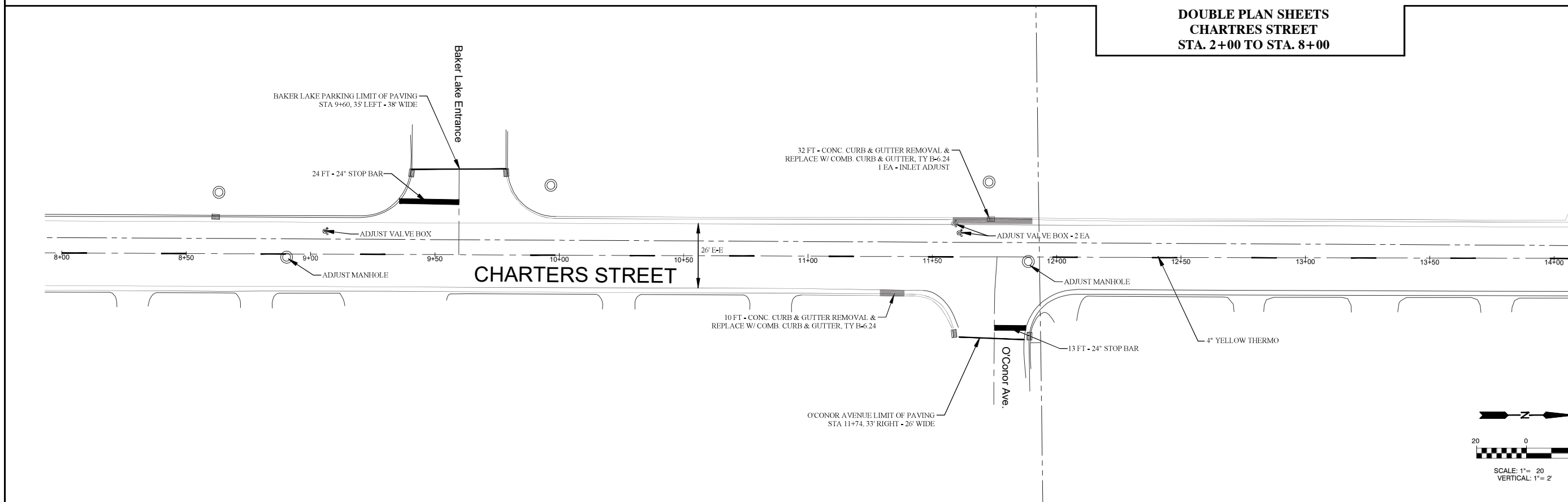
FILE NO.:

OF 7

FAU. RTE.	SECTION	COUNTY	TOTAL SHEETS	SHEET NO.
6104	22-00084-00-RS	LASALLE	7	4
FED. ROAD DIST. NO.	ILLINOIS	CONTRACT NO. 87807		



**DOUBLE PLAN SHEETS
CHARTRES STREET
STA. 2+00 TO STA. 8+00**



DRAWN BY: C/JG	CAD:
CHECKED BY:	DATE:

REVISIONS	
DATE	BY

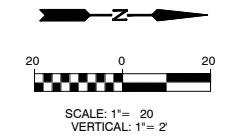
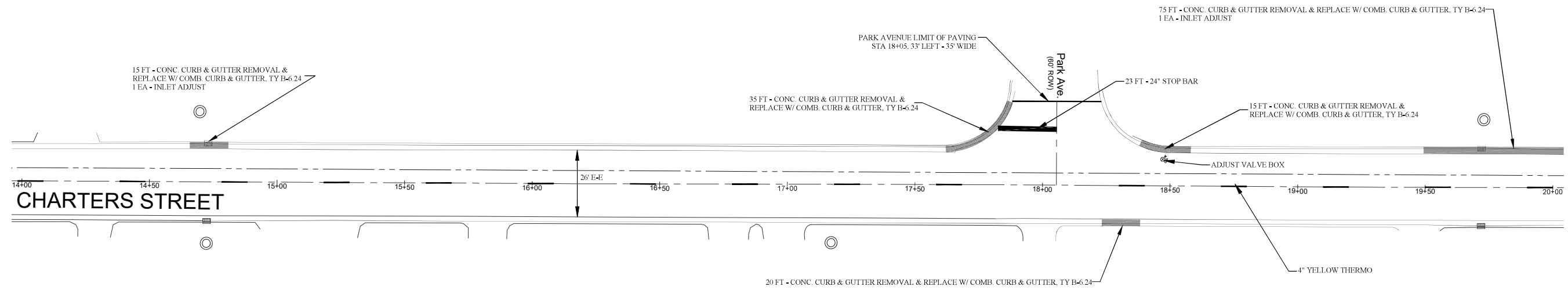


**FAU 6104 (CHARTRES STREET)
SECTION 22-00084-00-RS
CITY OF LA SALLE, LA SALLE COUNTY**

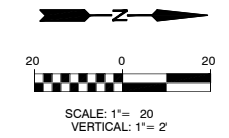
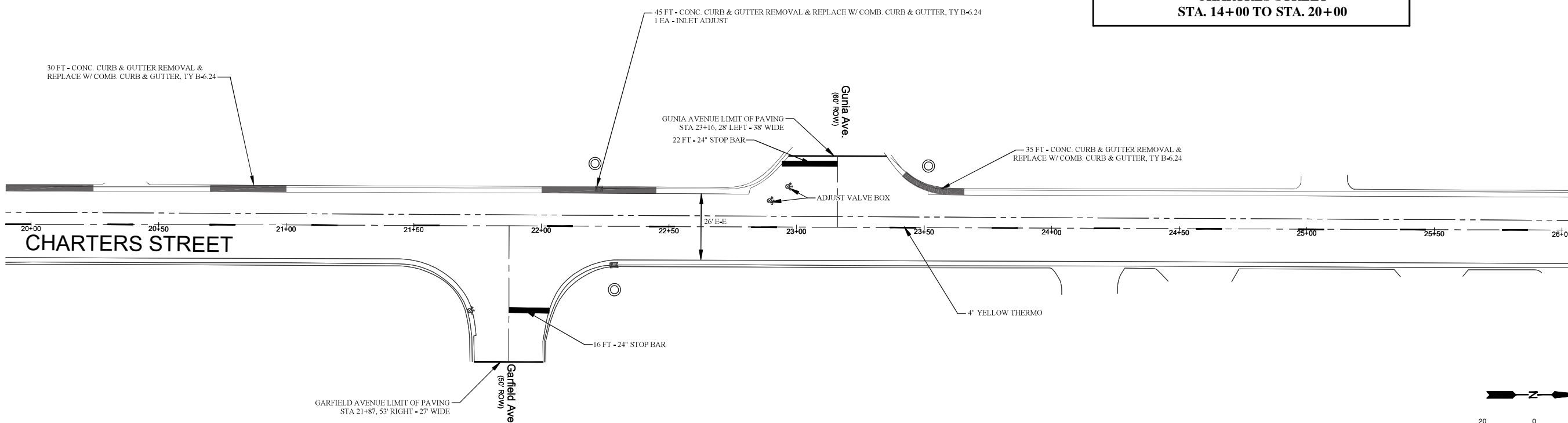
**DOUBLE PLAN SHEETS
CHARTRES STREET
STA. 8+00 TO STA. 14+00**


SCALE: 1" = 20' (Horz.)	SHEET 4
FILE NO.:	OF 7

FAU. RTE.	SECTION	COUNTY	TOTAL SHEETS	SHEET NO.
6104	22-00084-00-RS	LASALLE	7	5
FED. ROAD DIST. NO.	ILLINOIS	CONTRACT NO. 87807		

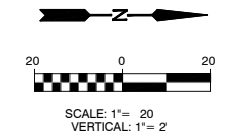
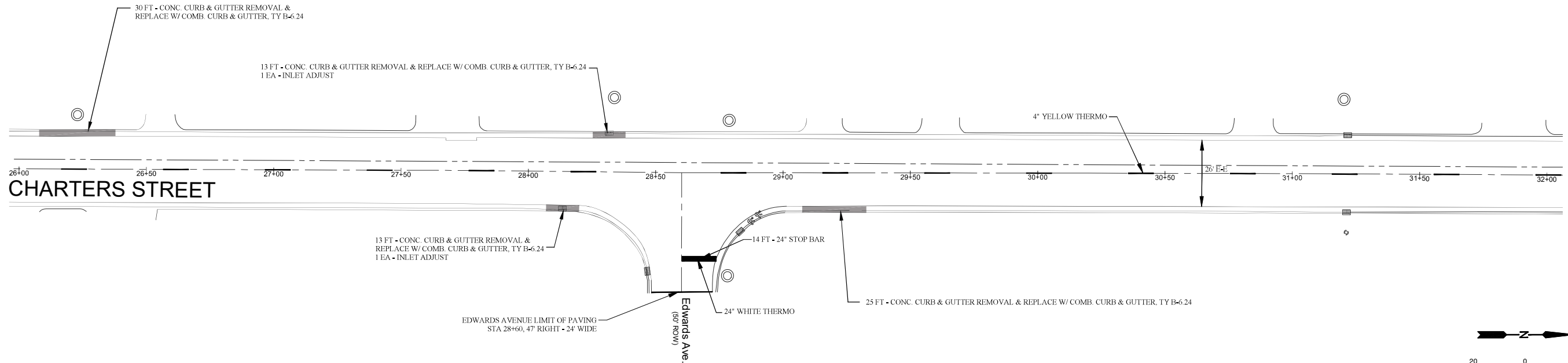


**DOUBLE PLAN SHEETS
CHARTRES STREET
STA. 14+00 TO STA. 20+00**

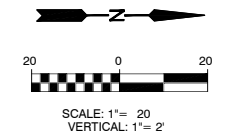
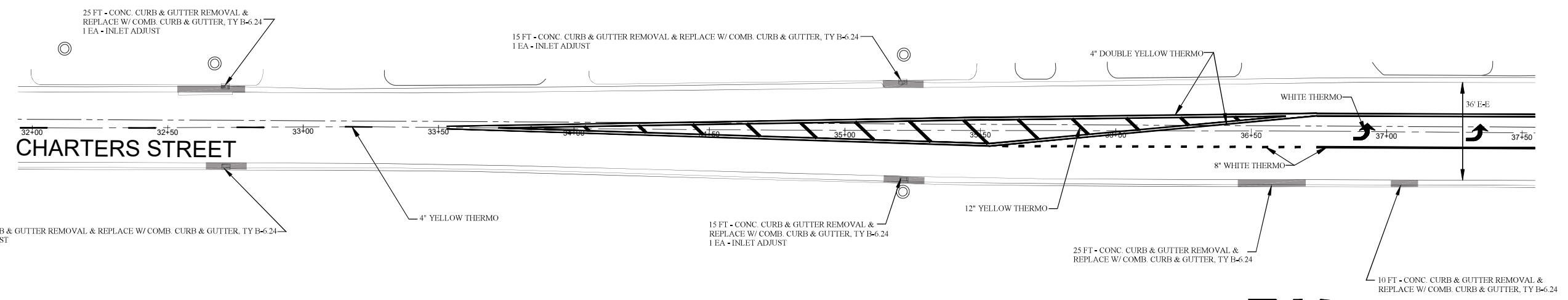


DRAWN BY: C/JG	CAD:	REVISIONS		 THE CITY OF <i>LaSalle</i> ILLINOIS	FAU 6104 (CHARTRES STREET) SECTION 22-00084-00-RS CITY OF LA SALLE, LA SALLE COUNTY	DOUBLE PLAN SHEETS CHARTRES STREET STA. 20+00 TO STA. 26+00	SCALE: 1" = 20' (Horz.)	SHEET 5
		DATE	BY				FILE NO.:	OF 7
CHECKED BY:	DATE:							

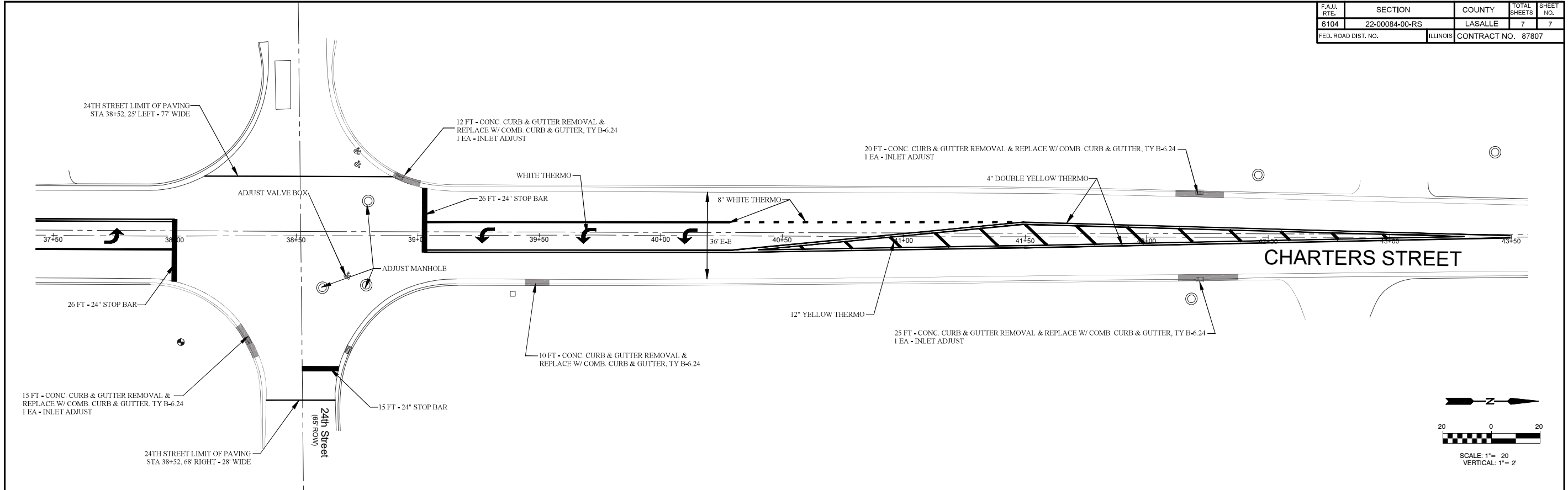
FAU. RTE.	SECTION	COUNTY	TOTAL SHEETS	SHEET NO.
6104	22-00084-00-RS	LASALLE	7	6
FED. ROAD DIST. NO.	ILLINOIS	CONTRACT NO. 87807		



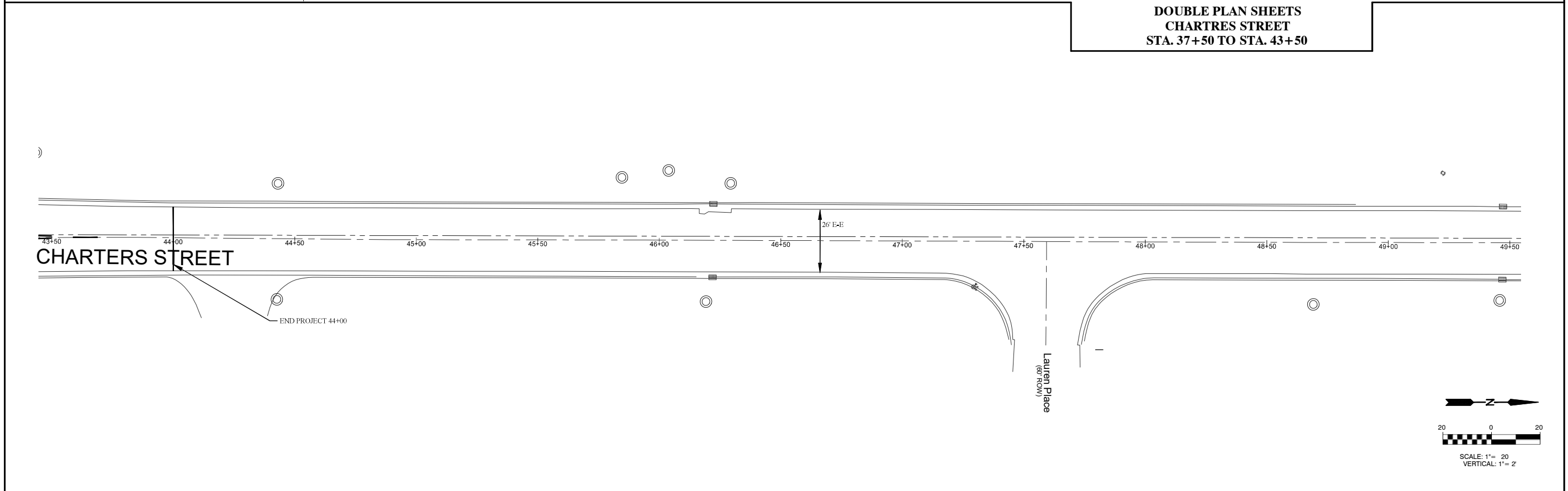
**DOUBLE PLAN SHEETS
CHARTRES STREET
STA. 26+00 TO STA. 32+00**




FAU. RTE.	SECTION	COUNTY	TOTAL SHEETS	SHEET NO.
6104	22-00084-00-RS	LASALLE	7	7
FED. ROAD DIST. NO.	ILLINOIS	CONTRACT NO. 87807		



**DOUBLE PLAN SHEETS
CHARTRES STREET
STA. 37+50 TO STA. 43+50**



DRAWN BY: C/JG	CAD:	REVISIONS		 THE CITY OF <i>LaSalle</i> ILLINOIS	FAU 6104 (CHARTRES STREET) SECTION 22-00084-00-RS CITY OF LA SALLE, LA SALLE COUNTY	DOUBLE PLAN SHEETS CHARTRES STREET STA. 43+50 TO STA. 49+50	SCALE: 1" = 20' (Horz.)	SHEET 7
		CHECKED BY:	DATE:				FILE NO.:	OF 7