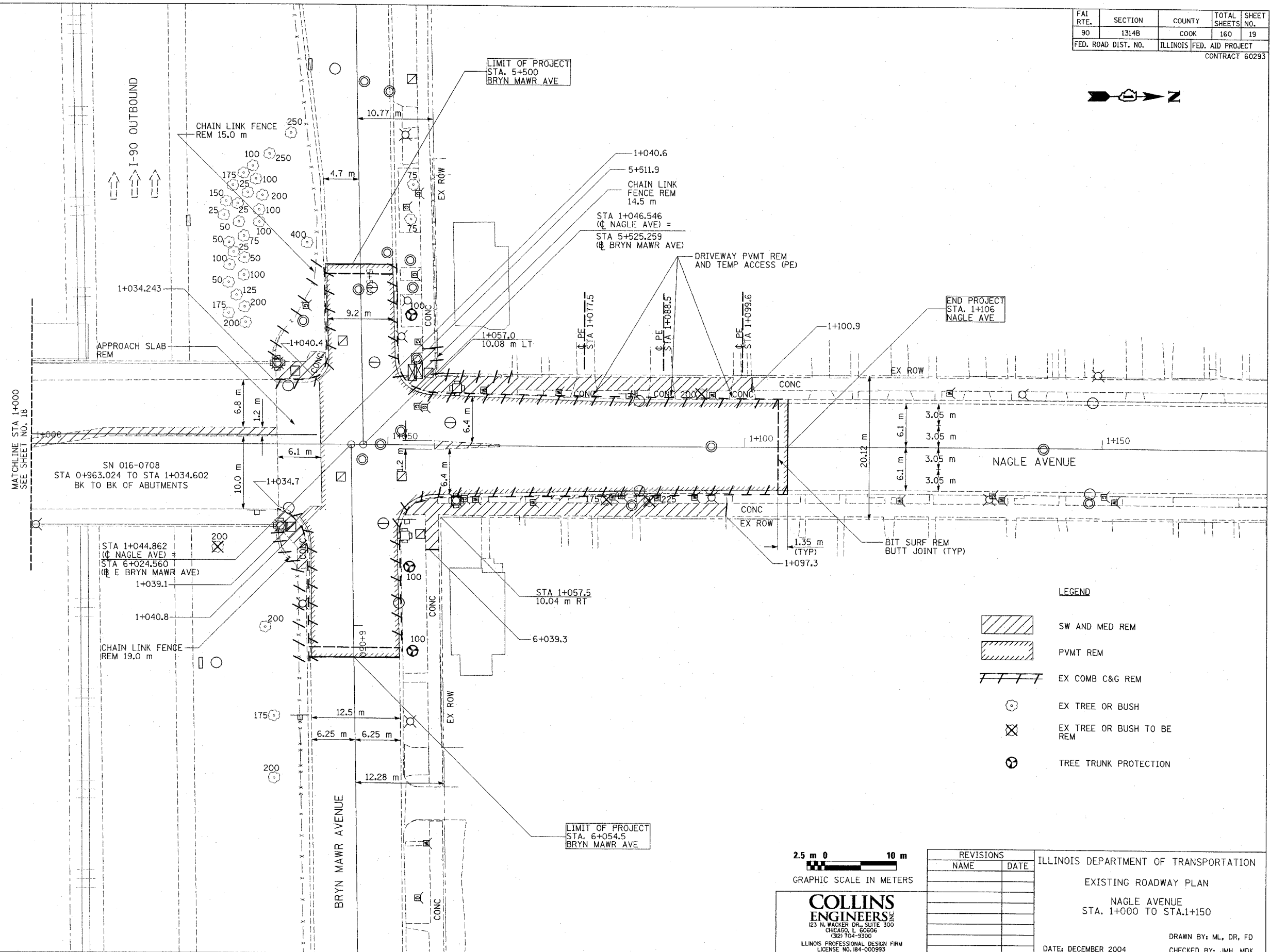
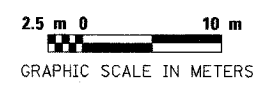


FAI RTE.	SECTION	COUNTY	TOTAL SHEETS	SHEET NO.
90	1314B	COOK	160	19
FED. ROAD DIST. NO.		ILLINOIS	FED. AID PROJECT	
CONTRACT 60293				



LEGEND

	SW AND MED REM
	PVMT REM
	EX COMB C&G REM
	EX TREE OR BUSH
	EX TREE OR BUSH TO BE REM
	TREE TRUNK PROTECTION



COLLINS ENGINEERS
123 N. WACKER DR., SUITE 300
CHICAGO, IL 60606
(312) 704-9300
ILLINOIS PROFESSIONAL DESIGN FIRM
LICENSE NO. 184-000933

REVISIONS	
NAME	DATE

ILLINOIS DEPARTMENT OF TRANSPORTATION
EXISTING ROADWAY PLAN
NAGLE AVENUE
STA. 1+000 TO STA. 1+150
DRAWN BY: ML, DR, FD
CHECKED BY: JMH, MDK
DATE: DECEMBER 2004

FILE: G:\2724\CIVIL\EXHIBIT\NAGLE\2724022.dgn