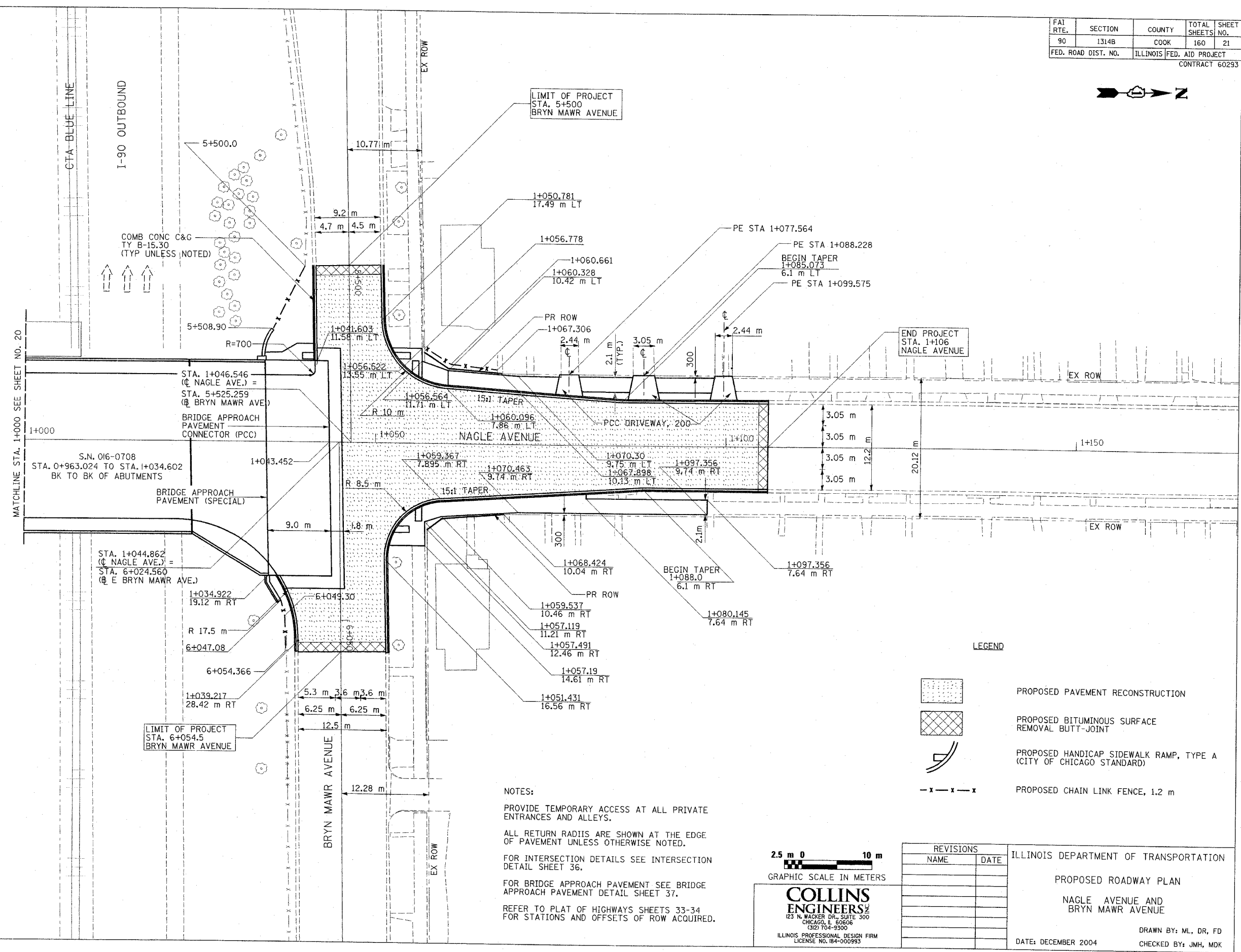


FBI RTE.	SECTION	COUNTY	TOTAL SHEETS	SHEET NO.
90	1314B	COOK	160	21
FED. ROAD DIST. NO.		ILLINOIS FED. AID PROJECT		CONTRACT 60293



MATCHLINE STA. 1+000 SEE SHEET NO. 20

LIMIT OF PROJECT  
STA. 5+500  
BRYN MAWR AVENUE

END PROJECT  
STA. 1+106  
NAGLE AVENUE

LIMIT OF PROJECT  
STA. 6+054.5  
BRYN MAWR AVENUE

**LEGEND**

- PROPOSED PAVEMENT RECONSTRUCTION
- PROPOSED BITUMINOUS SURFACE REMOVAL BUTT-JOINT
- PROPOSED HANDICAP SIDEWALK RAMP, TYPE A (CITY OF CHICAGO STANDARD)
- PROPOSED CHAIN LINK FENCE, 1.2 m

**NOTES:**

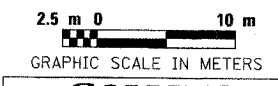
PROVIDE TEMPORARY ACCESS AT ALL PRIVATE ENTRANCES AND ALLEYS.

ALL RETURN RADII ARE SHOWN AT THE EDGE OF PAVEMENT UNLESS OTHERWISE NOTED.

FOR INTERSECTION DETAILS SEE INTERSECTION DETAIL SHEET 36.

FOR BRIDGE APPROACH PAVEMENT SEE BRIDGE APPROACH PAVEMENT DETAIL SHEET 37.

REFER TO PLAT OF HIGHWAYS SHEETS 33-34 FOR STATIONS AND OFFSETS OF ROW ACQUIRED.



**COLLINS ENGINEERS**  
123 N. WACKER DR., SUITE 300  
CHICAGO, IL 60606  
(312) 704-9300  
ILLINOIS PROFESSIONAL DESIGN FIRM  
LICENSE NO. 184-000993

REVISIONS	
NAME	DATE

ILLINOIS DEPARTMENT OF TRANSPORTATION

**PROPOSED ROADWAY PLAN**

NAGLE AVENUE AND  
BRYN MAWR AVENUE

DRAWN BY: ML, DR, FD  
CHECKED BY: JMH, MDK

DATE: DECEMBER 2004

FILE: G:\2724\CIVIL\EXHIBIT\NAGLE\2724024.dgn