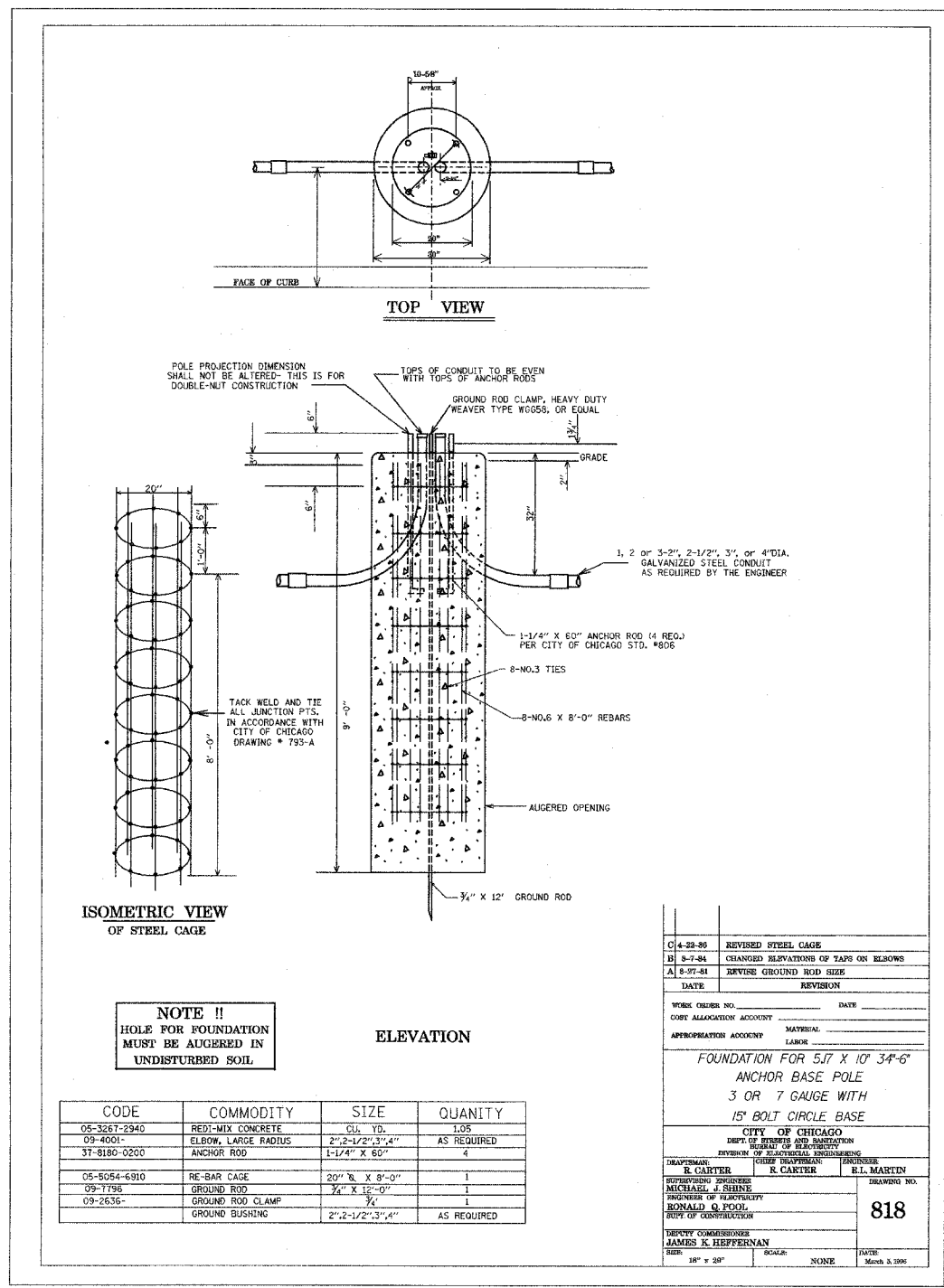


60293

FAI RTE.	SECTION	COUNTY	TOTAL SHEETS	SHEET NO.
90	1314B	COOK	160	51
FED. ROAD DIST. NO.		ILLINOIS FED. AID PROJECT		



**NOTE !!**  
HOLE FOR FOUNDATION MUST BE AUGERED IN UNDISTURBED SOIL

CODE	COMMODITY	SIZE	QUANTITY
05-3267-2940	RED-MIX CONCRETE	CU. YD.	1.05
09-4001-	ELBOW, LARGE RADIUS	2", 2-1/2", 3", 4"	AS REQUIRED
37-8180-0200	ANCHOR ROD	1-1/4" X 60"	4
05-6054-6910	RE-BAR CAGE	20" X 8'-0"	1
09-1198	GROUND ROD	3/4" X 12'-0"	1
09-2636-	GROUND ROD CLAMP	3/4"	1
	GROUND BUSHING	2", 2-1/2", 3", 4"	AS REQUIRED

DATE	REVISION
C 4-28-86	REVISED STEEL CAGE
B 2-7-84	CHANGED ELEVATIONS OF TAPS ON ELBOWS
A 8-97-81	REVISE GROUND ROD SIZE

WORK ORDER NO. \_\_\_\_\_ DATE \_\_\_\_\_

COST ALLOCATION ACCOUNT \_\_\_\_\_ MATERIAL \_\_\_\_\_

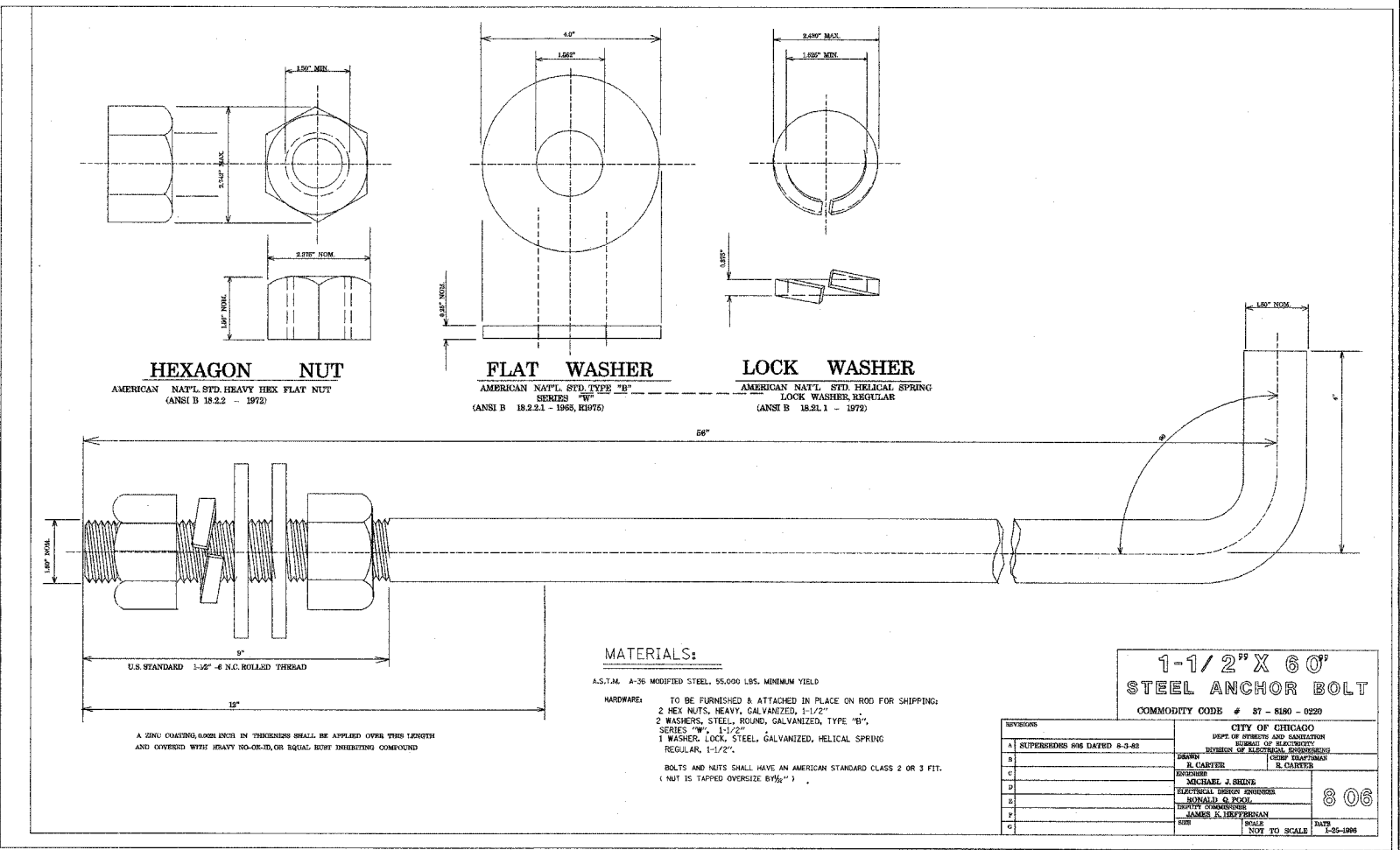
APPROPRIATION ACCOUNT \_\_\_\_\_ LABOR \_\_\_\_\_

**FOUNDATION FOR 5/7 X 10' 3/4'-6' ANCHOR BASE POLE 3 OR 7 GAUGE WITH 15' BOLT CIRCLE BASE**

**CITY OF CHICAGO**  
DEPT. OF STREETS AND SANITATION  
BUREAU OF ELECTRICITY

DRAWING NO. **818**

DATE: March 3, 1986



REVISIONS	DATE
A	SUPERSEDES 818 DATED 8-3-82
B	
C	
D	
E	
F	
G	

**CITY OF CHICAGO**  
DEPT. OF STREETS AND SANITATION  
BUREAU OF ELECTRICITY

DRAWN BY: **R. CARTER**  
CHECKED BY: **R. CARTER**

DESIGNED BY: **MICHAEL J. SHINE**  
ELECTRICAL ENGINEER

APPROVED BY: **RONALD G. POOL**  
CITY ENGINEER

DATE: **3-3-1986**

G:\PROJECTS\JOB268\SIGNAL\NAGLE\TS-11.DGN DT. 02-19-01

REVISIONS	NAME	DATE

ILLINOIS DEPARTMENT OF TRANSPORTATION  
NAGLE AVENUE OVER FAI-90  
(KENNEDY EXPY)  
CITY OF CHICAGO  
STANDARD TRAFFIC SIGNAL  
DETAILS

SCALE: NONE DRAWN BY: AMP  
DATE: DEC 2004 CHECKED BY: DS

TS-11