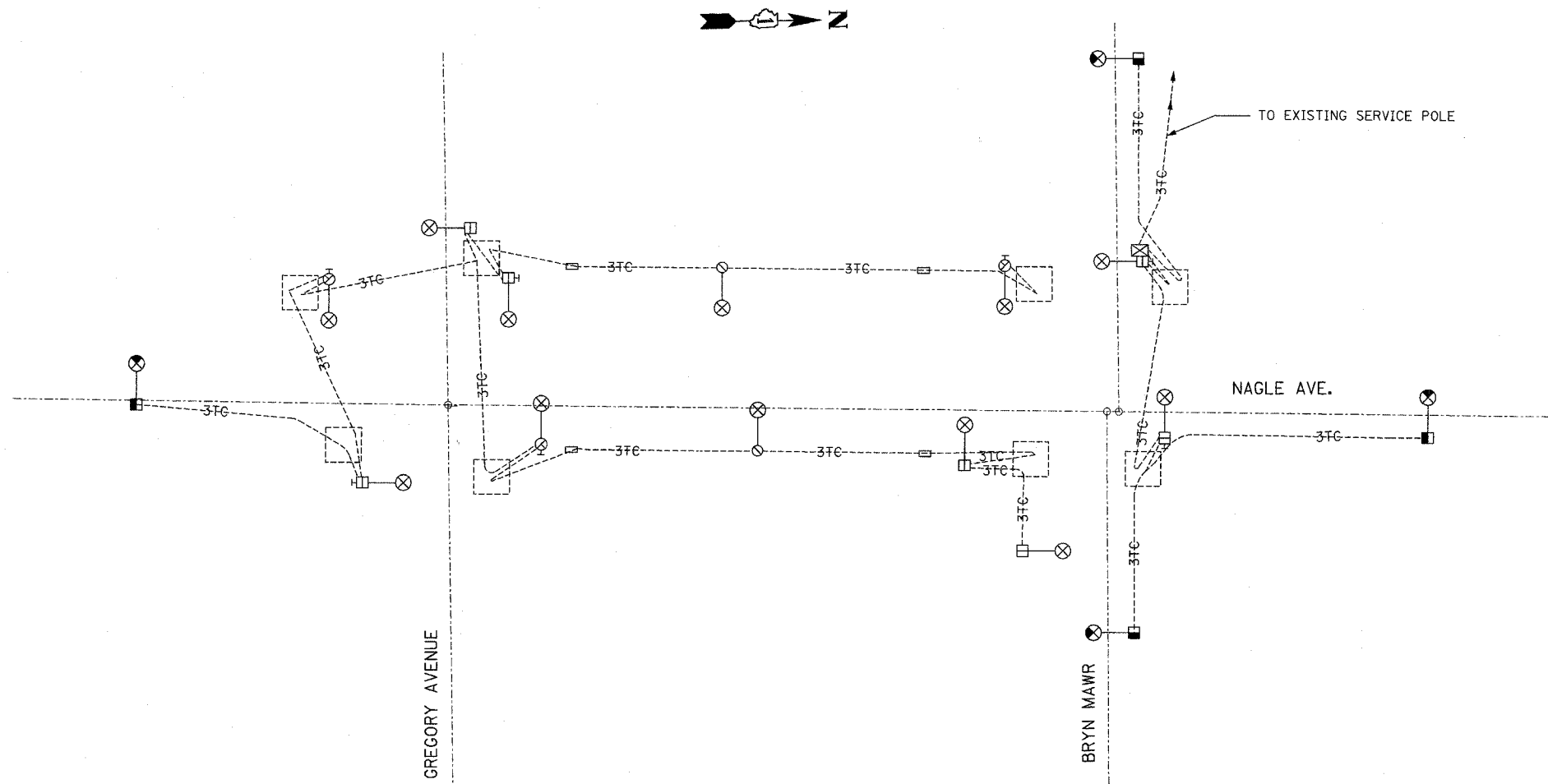


FAI RTE.	SECTION	COUNTY	TOTAL SHEETS	SHEET NO.
90	1314B	COOK	160	66
FED. ROAD DIST. NO.	ILLINOIS	FED. AID PROJECT		



NOTES  
 1. FOR SYMBOLS, GENERAL NOTES AND LEGEND SEE SHEET E-01.

DT. 02-19-01

G:/PROJECTS/JOB268/LTG/NAGLE/E3.DGN

E-03

REVISIONS		ILLINOIS DEPARTMENT OF TRANSPORTATION
NAME	DATE	
		NAGLE AVE. OVER FAI-90 (KENNEDY EXPY) CITY OF CHICAGO WIRING DIAGRAM  SCALE: NONE DATE: JUNE 2001

**K&E** KAM ENGINEERING, INC.  
 CONSULTING ENGINEERS  
 707A Davis Road, Suite 205  
 Elgin, Illinois 60123-1369

DRAWN BY: AMP  
 CHECKED BY: sm