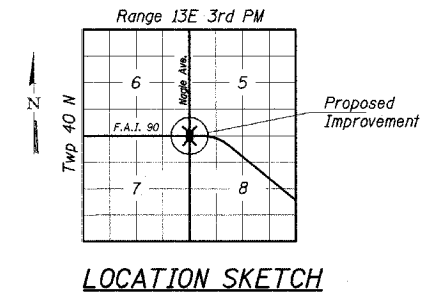


Bench Mark:
TBM #187 - City of Chicago Bench Mark: Level with ground on northwest corner of Newark/Hurlbut
8.15 m north of north R.O.W. Hurlbut, 2.555 m east of west Newark. El. 191.048

Existing Structure : None, embankment slope along existing Gregory Avenue roadway.

Note: All dimensions are in millimeters (mm) except as noted.

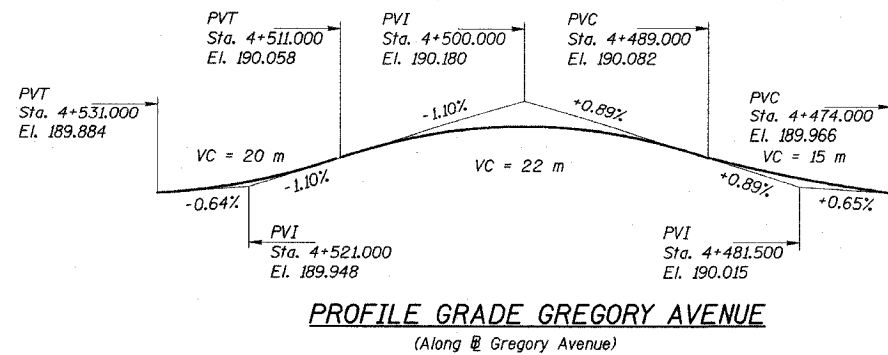
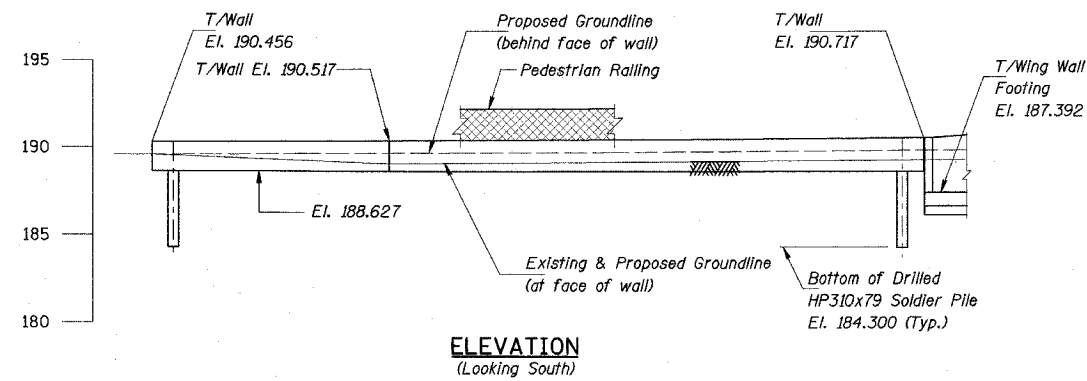
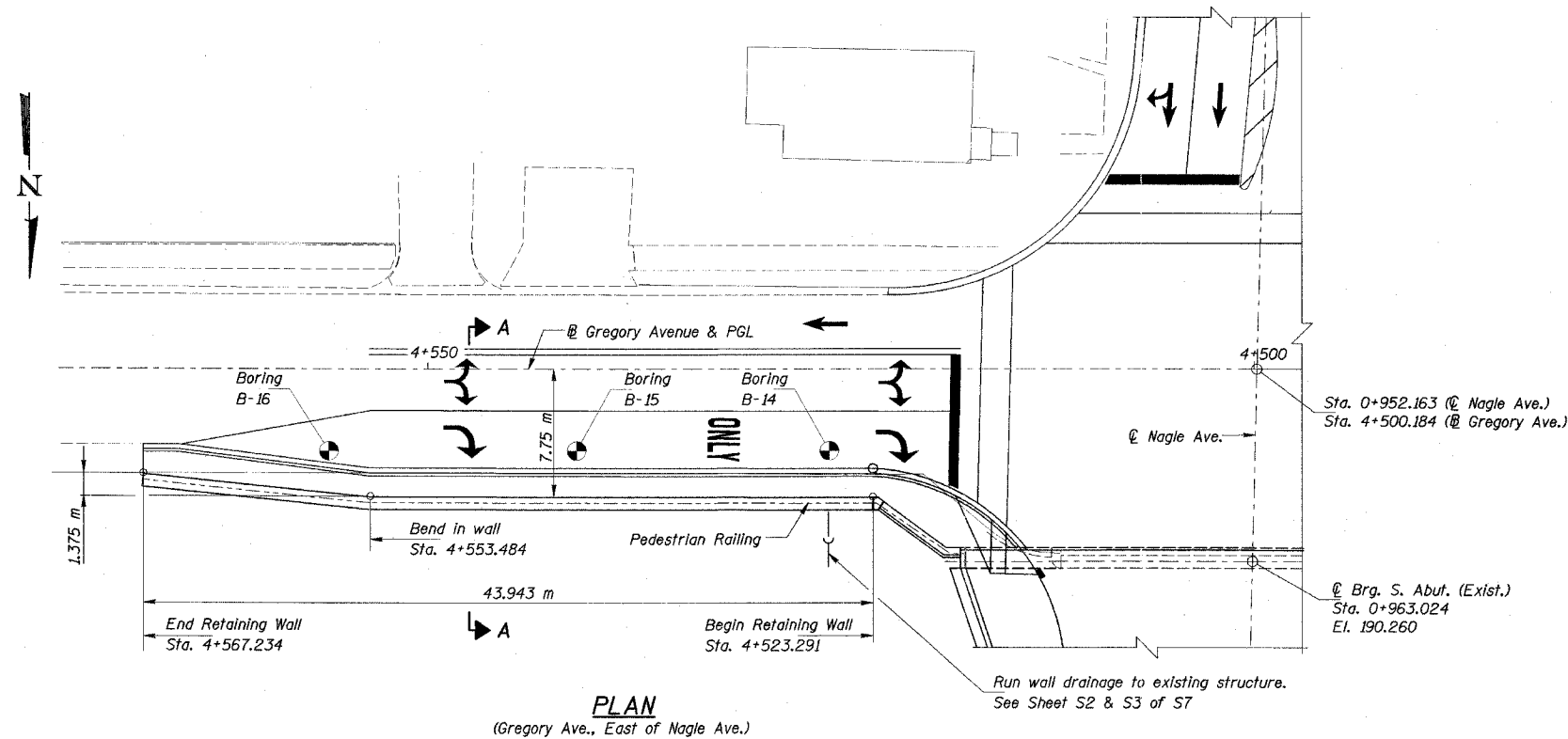


ROUTE NO.	SECTION	COUNTY	TOTAL SHEETS	SHEET NO.	SHEET NO. S1
FAU 2783	1314B	COOK	160	119	57 SHEETS
FED. ROAD DIST. NO. 7	ILLINOIS	FED. AID PROJECT			
CONTRACT 60293					

DESIGN SPECIFICATIONS
2002 AASHTO Standard Specifications for Highway Bridges, 17th Edition

LOADING
Equivalent Fluid Soil Pressure = 6.3 kPa/m
Traffic Surcharge = 12 kPa

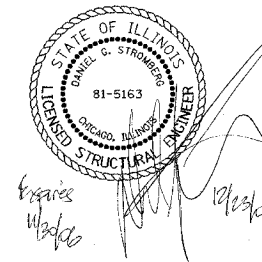
DESIGN STRESSES
 $f'_c = 24 \text{ MPa}$
 $f_y = 400 \text{ MPa}$ (Reinforcement)
 $f_y = 345 \text{ MPa}$ (M270 M Grade 345)



LIST OF STRUCTURAL DRAWINGS

TITLE	SHEET
Gregory Ave. Retaining Wall General Plan	S1
General Notes, Bill of Material and Sections	S2
Retaining Wall Details-I	S3
Retaining Wall Details-II	S4
Pedestrian Railing	S5
Soil Borings-I	S6
Soil Borings-II	S7

APPROVED
FOR STRUCTURAL ADEQUACY ONLY
Ralph E. Anderson
ENGINEER OF BRIDGES AND STRUCTURES



Notes:
For General Notes, Section A-A and Bill of Material see Sheet S2 of S7.
For Soil Boring Logs see Sheets S6 & S7 of S7.

REVISIONS	
NAME	DATE

COLLINS ENGINEERS
123 N. WACKER DR., SUITE 300
CHICAGO, IL 60606
(312) 704-8300
ILLINOIS PROFESSIONAL DESIGN FIRM
LICENSE NO. 184-000993

ILLINOIS DEPARTMENT OF TRANSPORTATION
F.A.I. 90 (I-90)
AT NAGLE AVENUE
F.A.U. RTE. 2783 SEC 1314B
COOK COUNTY STATION 4+545.264
STRUCTURE NO. 016-W779
**GREGORY AVE. RETAINING WALL
GENERAL PLAN**

DRAWN BY KAC
CHECKED BY ERB/DGS
DATE: DEC. 2004