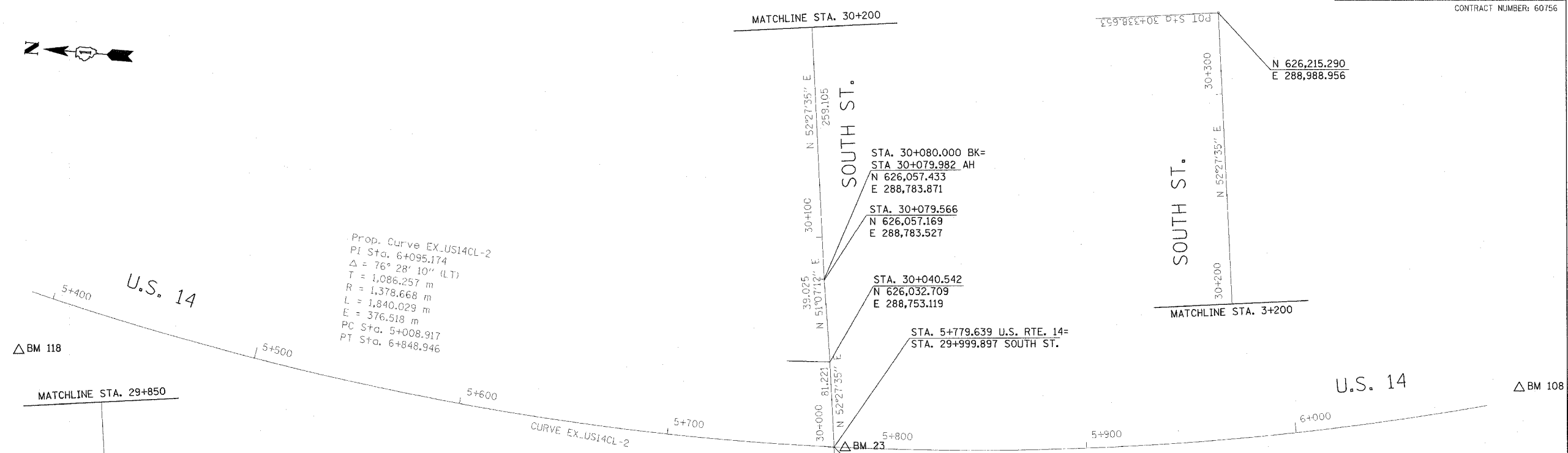
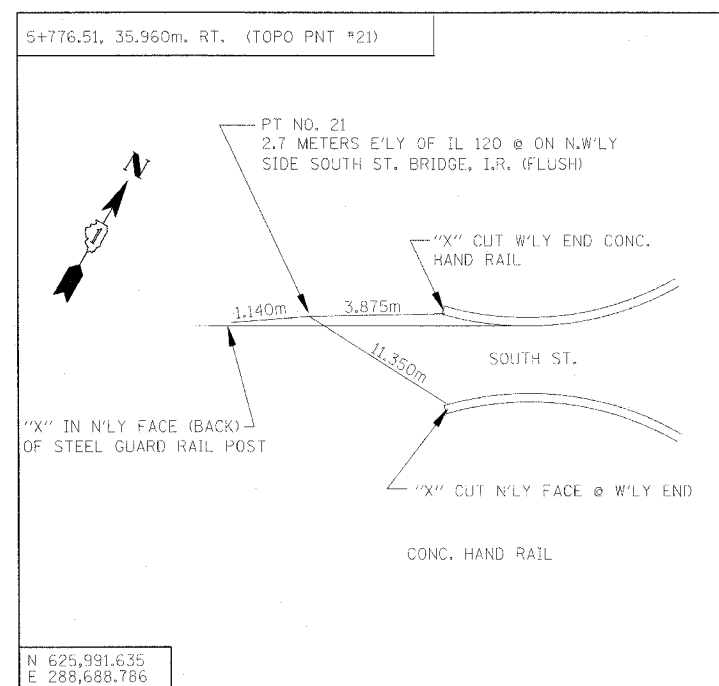


FAP RTE.	SECTION	COUNTY	TOTAL SHEETS	SHEET NO.
305	28R-2-RS-1	McHENRY	53	6
STA.		TO STA.		
FED. ROAD DIST. NO.		ILLINOIS FED. AID PROJECT		
CONTRACT NUMBER: 60756				

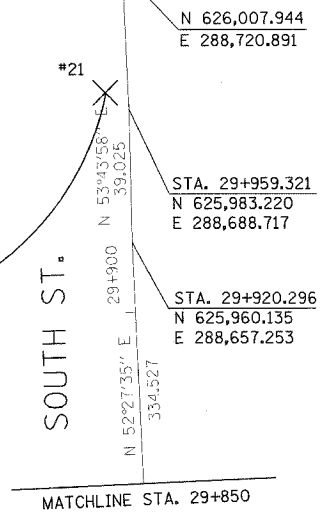
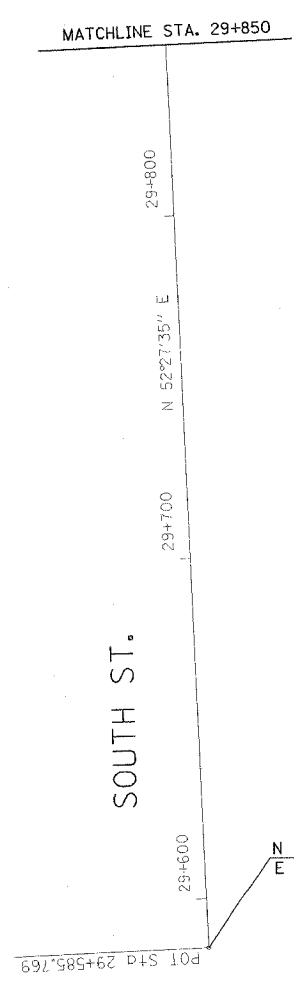


Prop. Curve EX_US14CL-2
 PI Sta. 6+095.174
 $\Delta = 76^\circ 28' 10''$ (LT)
 T = 1,086.257 m
 R = 1,378.668 m
 L = 1,840.029 m
 E = 376.518 m
 PC Sta. 5+008.917
 PT Sta. 6+848.946



BENCHMARK DATA			
B.M.	STATION	ELEVATION	DESCRIPTION
23	5+780	285.5193	FND. SQUARE CUT IN CENTER OF CRASH WALL OF CENTER PIER OF SOUTH STREET. BRIDGE OVER U.S. 14.
108	6+185	289.1388	SET SQUARE CUT ON MIDDLE OF E'LY CONC. WALL OF SQUARE CATCH BASIN 5m N.E. OF N'LY EDGE OF PAVEMENT U.S. 14.
118	5+395	293.4862	SET 60D NAIL ON E'LY FACE OF WOOD FENCE POST 28.5m NORTH OF S'LY END OF FENCE @ W'LY R.O.W. U.S. 14 ± 385m NORTH OF SOUTH STREET.

ALIGNMENT CONTROL POINTS		
NUMBER	NORTHING	EASTING
21	625991.635	288688.786



REVISIONS		ILLINOIS DEPARTMENT OF TRANSPORTATION
NAME	DATE	
		SOUTH STREET ALIGNMENT, TIES, AND BENCHMARKS SCALE 1:1000 DRAWN BY AAF DATE DECEMBER 2004 CHECKED BY BAP

HOH HARRY G. HETTER - ASSOCIATES, INC.
 DESIGN AND CONSULTING ENGINEERS
 55 East Jackson Blvd.
 Chicago, Illinois 60604
 312.566-8121

PROJECT NUMBER: 1962
 FILE NAME: G:\PROJECTS\1962\DGNS\CIVIL\1962CATT.DGN