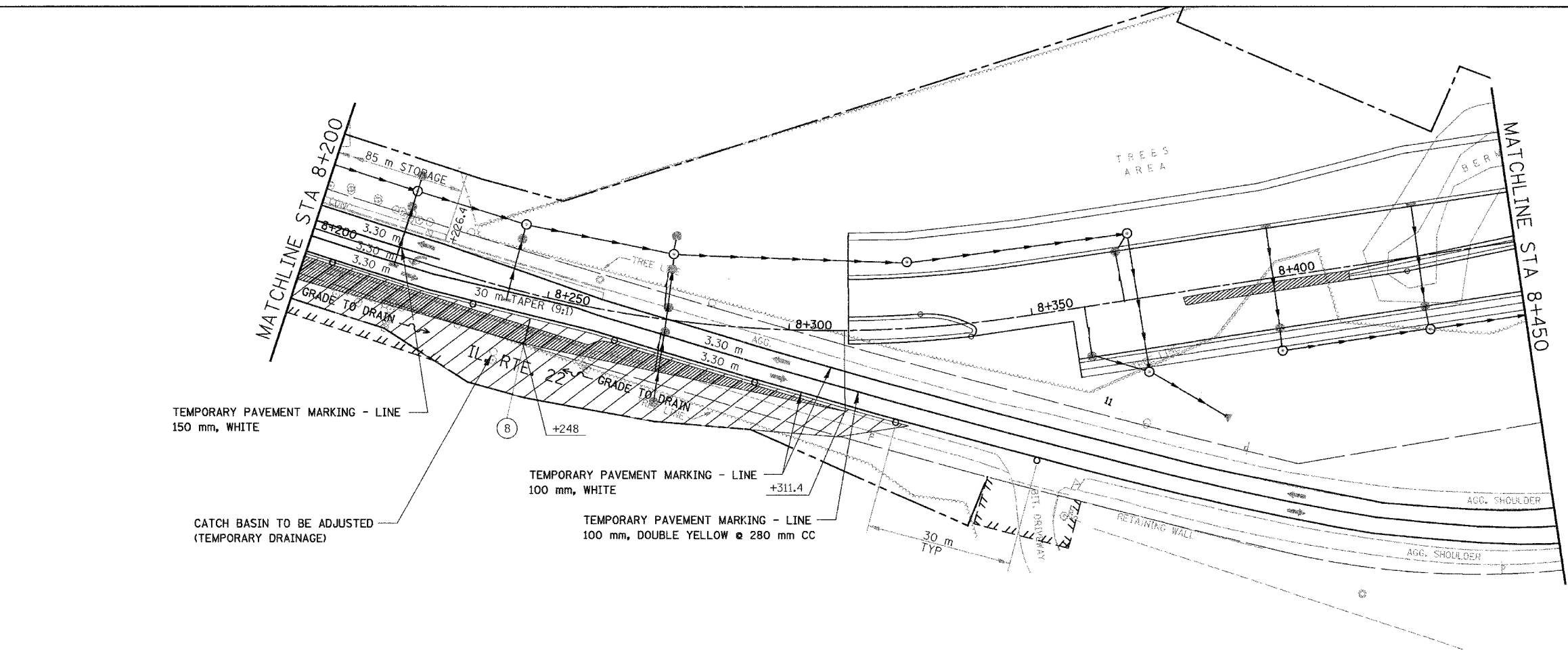


F.A. RTE.	SECTION	COUNTY	TOTAL SHEETS	SHEET NO.
337	19R-1	LAKE	800	105
STA.		TO STA.		
FED. ROAD DIST. NO.		ILLINOIS FED. AID PROJECT		

60997

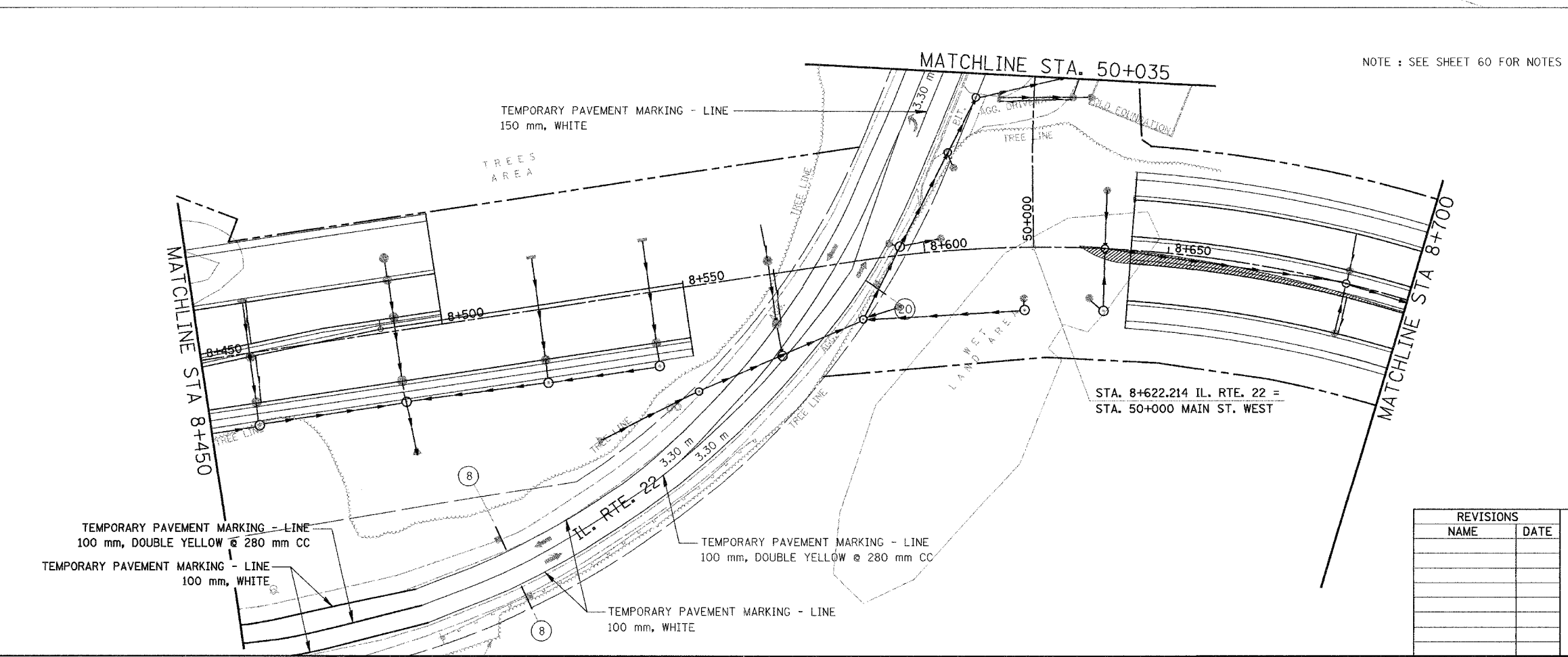


TEMPORARY PAVEMENT MARKING - LINE
150 mm, WHITE

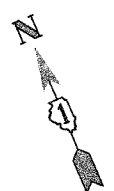
CATCH BASIN TO BE ADJUSTED
(TEMPORARY DRAINAGE)

TEMPORARY PAVEMENT MARKING - LINE
100 mm, WHITE

TEMPORARY PAVEMENT MARKING - LINE
100 mm, DOUBLE YELLOW @ 280 mm CC

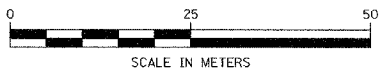


NOTE : SEE SHEET 60 FOR NOTES ON TEMP PAVEMENT MARKINGS



LEGEND

	TEMPORARY PAVEMENT
	CONSTRUCTION WORK ZONE



TEMPORARY PAVEMENT MARKING - LINE
100 mm, DOUBLE YELLOW @ 280 mm CC

TEMPORARY PAVEMENT MARKING - LINE
100 mm, WHITE

TEMPORARY PAVEMENT MARKING - LINE
100 mm, DOUBLE YELLOW @ 280 mm CC

TEMPORARY PAVEMENT MARKING - LINE
100 mm, WHITE

REVISIONS	
NAME	DATE

ILLINOIS DEPARTMENT OF TRANSPORTATION
ILLINOIS ROUTE 22
FROM US RTE 12 TO BUESCHING RD
MAINTENANCE OF TRAFFIC
STA. 8+200 TO STA. 8+700
STAGE 1B
DRAWN BY BKN
CHECKED BY SMK
DATE 7/21/04