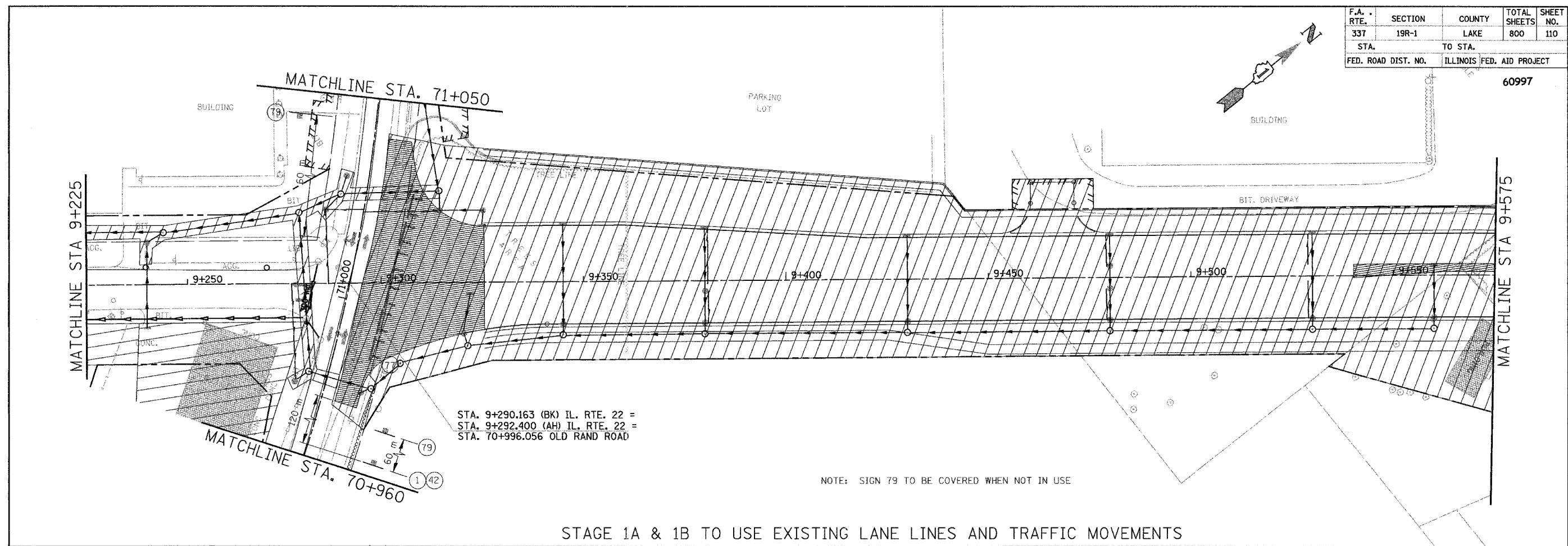


F.A. RTE.	SECTION	COUNTY	TOTAL SHEETS	SHEET NO.
337	19R-1	LAKE	800	110
STA.	TO STA.			
FED. ROAD DIST. NO.	ILLINOIS FED. AID PROJECT			

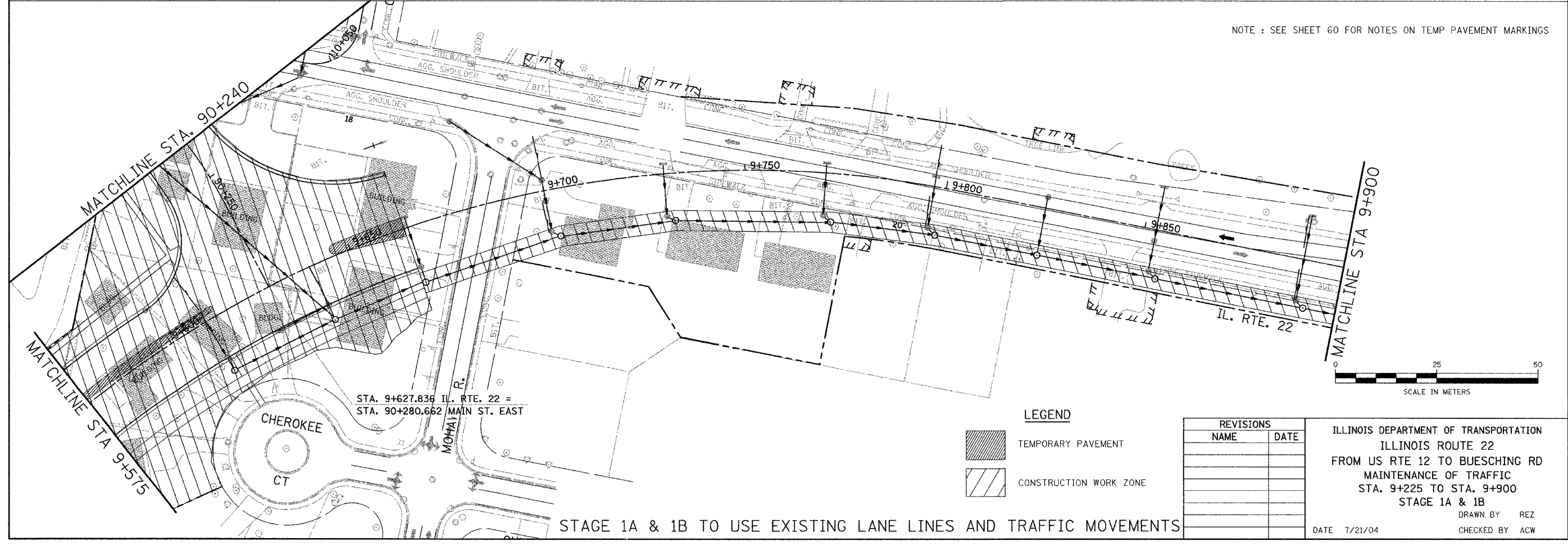
60997



STA. 9+290.163 (BK) IL. RTE. 22 =  
 STA. 9+292.400 (AH) IL. RTE. 22 =  
 STA. 70+996.056 OLD RAND ROAD

NOTE: SIGN 79 TO BE COVERED WHEN NOT IN USE

STAGE 1A & 1B TO USE EXISTING LANE LINES AND TRAFFIC MOVEMENTS



NOTE: SEE SHEET 60 FOR NOTES ON TEMP PAVEMENT MARKINGS

STA. 9+627.836 IL. RTE. 22 =  
 STA. 90+280.662 MAIN ST. EAST

- LEGEND**
- TEMPORARY PAVEMENT
  - CONSTRUCTION WORK ZONE

REVISIONS	
NAME	DATE

ILLINOIS DEPARTMENT OF TRANSPORTATION  
 ILLINOIS ROUTE 22  
 FROM US RTE 12 TO BUESCHING RD  
 MAINTENANCE OF TRAFFIC  
 STA. 9+225 TO STA. 9+900  
 STAGE 1A & 1B  
 DRAWN BY REZ  
 CHECKED BY ACW  
 DATE 7/21/04

STAGE 1A & 1B TO USE EXISTING LANE LINES AND TRAFFIC MOVEMENTS