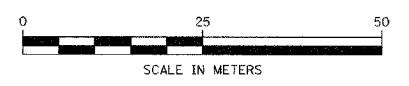
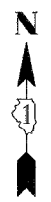
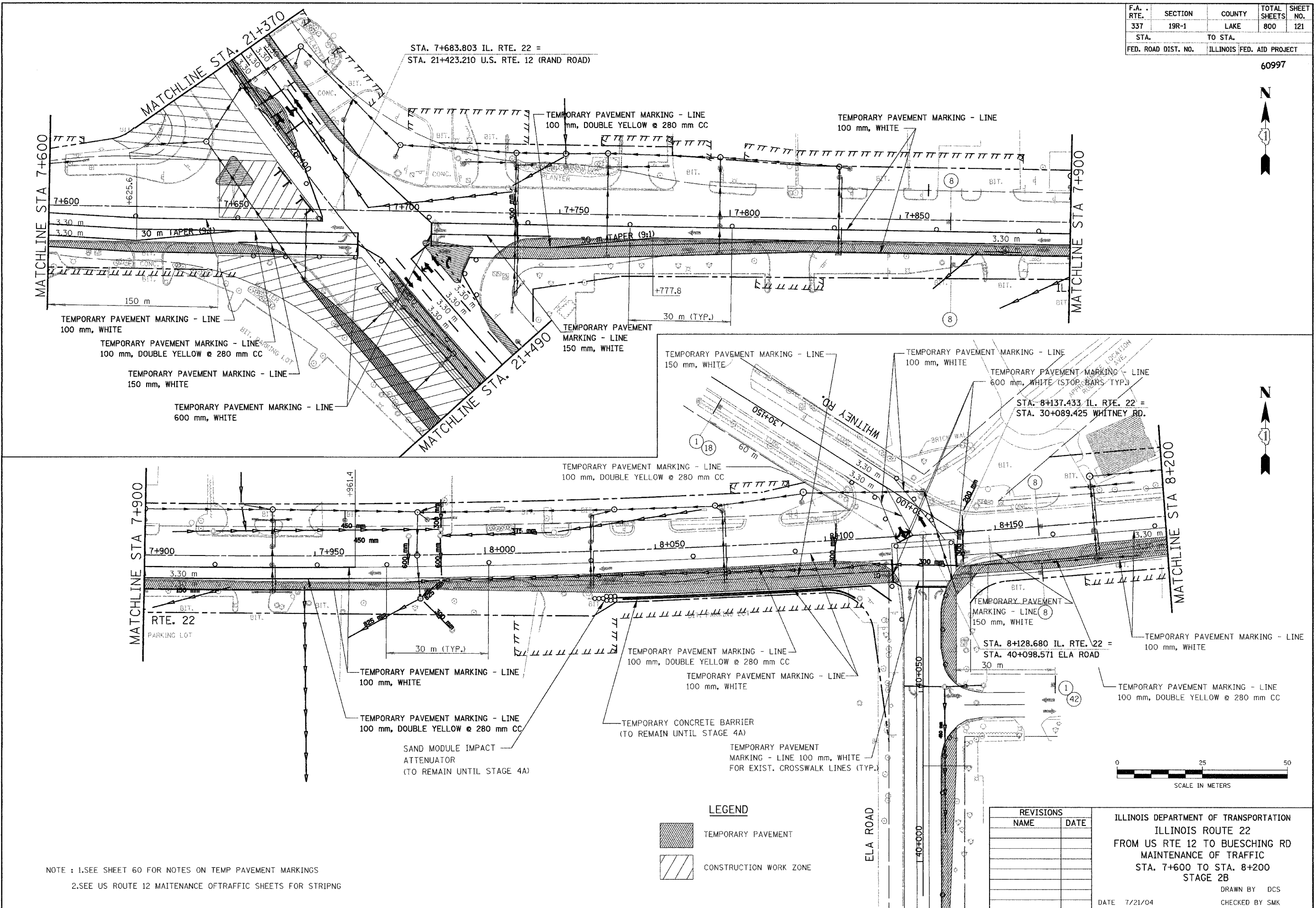


F.A. RTE.	SECTION	COUNTY	TOTAL SHEETS	SHEET NO.
337	19R-1	LAKE	800	121
STA.	TO STA.			
FED. ROAD DIST. NO.	ILLINOIS FED. AID PROJECT			

60997



NOTE : 1. SEE SHEET 60 FOR NOTES ON TEMP PAVEMENT MARKINGS
 2. SEE US ROUTE 12 MAINTENANCE OF TRAFFIC SHEETS FOR STRIPING

LEGEND

	TEMPORARY PAVEMENT
	CONSTRUCTION WORK ZONE

REVISIONS	
NAME	DATE

ILLINOIS DEPARTMENT OF TRANSPORTATION
 ILLINOIS ROUTE 22
 FROM US RTE 12 TO BUESCHING RD
 MAINTENANCE OF TRAFFIC
 STA. 7+600 TO STA. 8+200
 STAGE 2B
 DRAWN BY DCS
 CHECKED BY SMK
 DATE 7/21/04