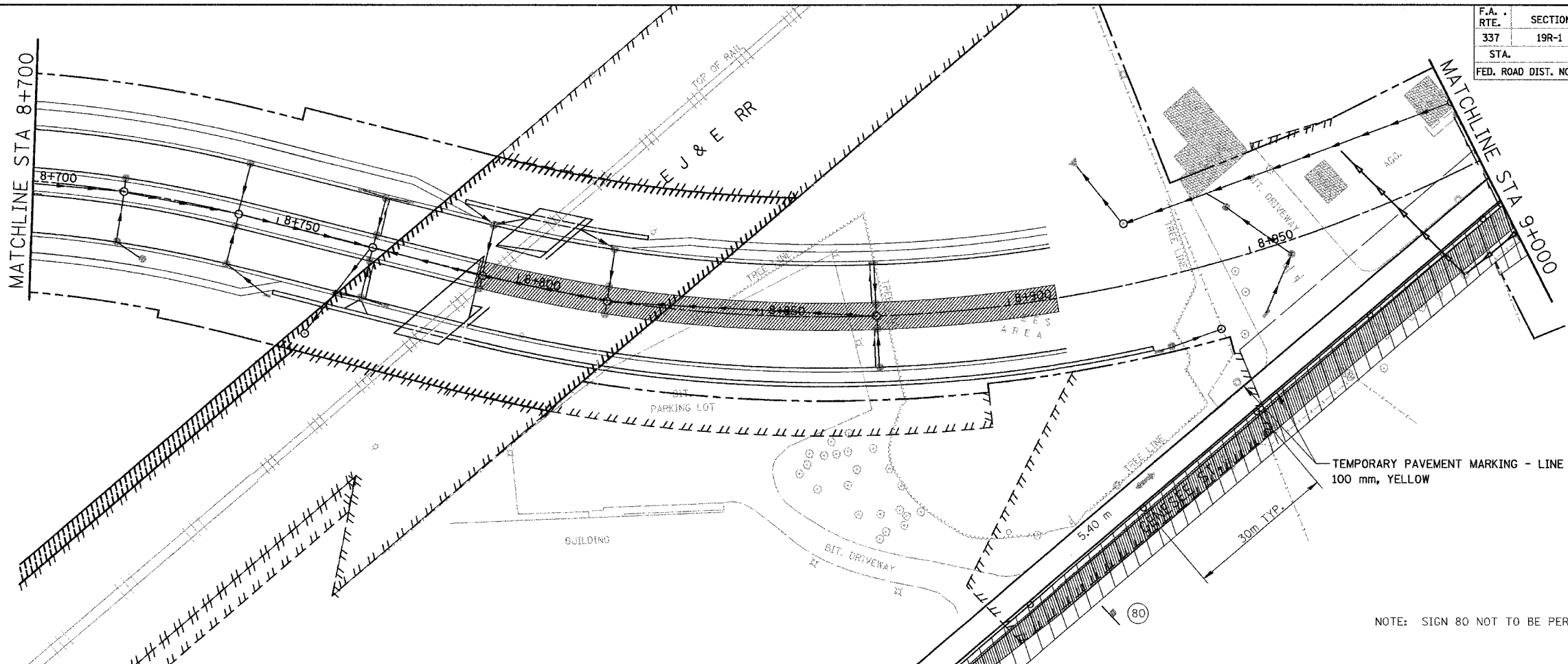
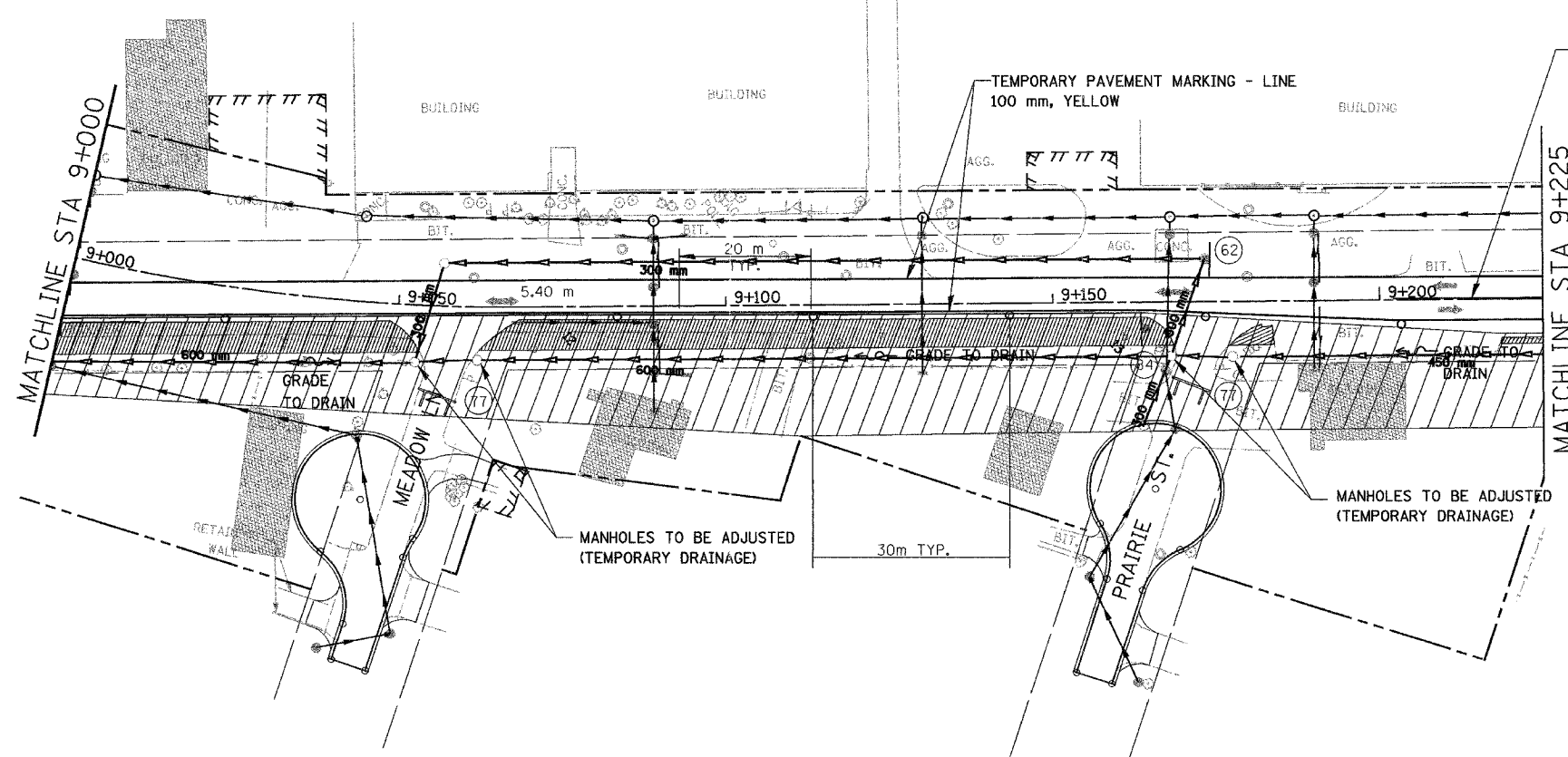


F.A. RTE.	SECTION	COUNTY	TOTAL SHEETS	SHEET NO.
337	19R-1	LAKE	800	123
STA.		TO STA.		
FED. ROAD DIST. NO.		ILLINOIS FED. AID PROJECT		

60997

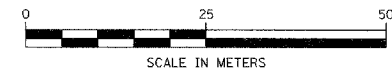


NOTE: SIGN 80 NOT TO BE PERMANENTLY MOUNTED



**LEGEND**

	TEMPORARY PAVEMENT
	CONSTRUCTION WORK ZONE



NOTE : SEE SHEET 60 FOR NOTES ON TEMP PAVEMENT MARKINGS

REVISIONS	
NAME	DATE

ILLINOIS DEPARTMENT OF TRANSPORTATION  
 ILLINOIS ROUTE 22  
 FROM US RTE 12 TO BUESCHING RD  
 MAINTENANCE OF TRAFFIC  
 STA. 8+700 TO STA. 9+225  
 STAGE 2A & 2B  
 DRAWN BY REZ  
 CHECKED BY ACW  
 DATE 7/21/04