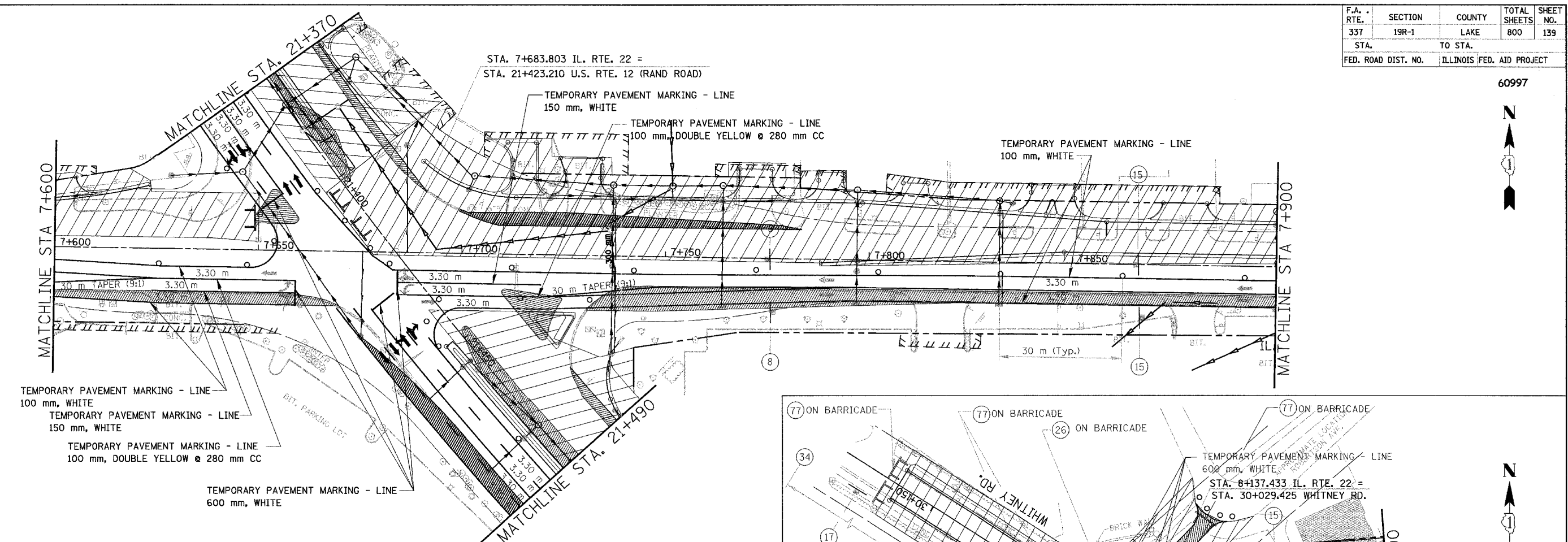
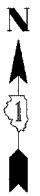
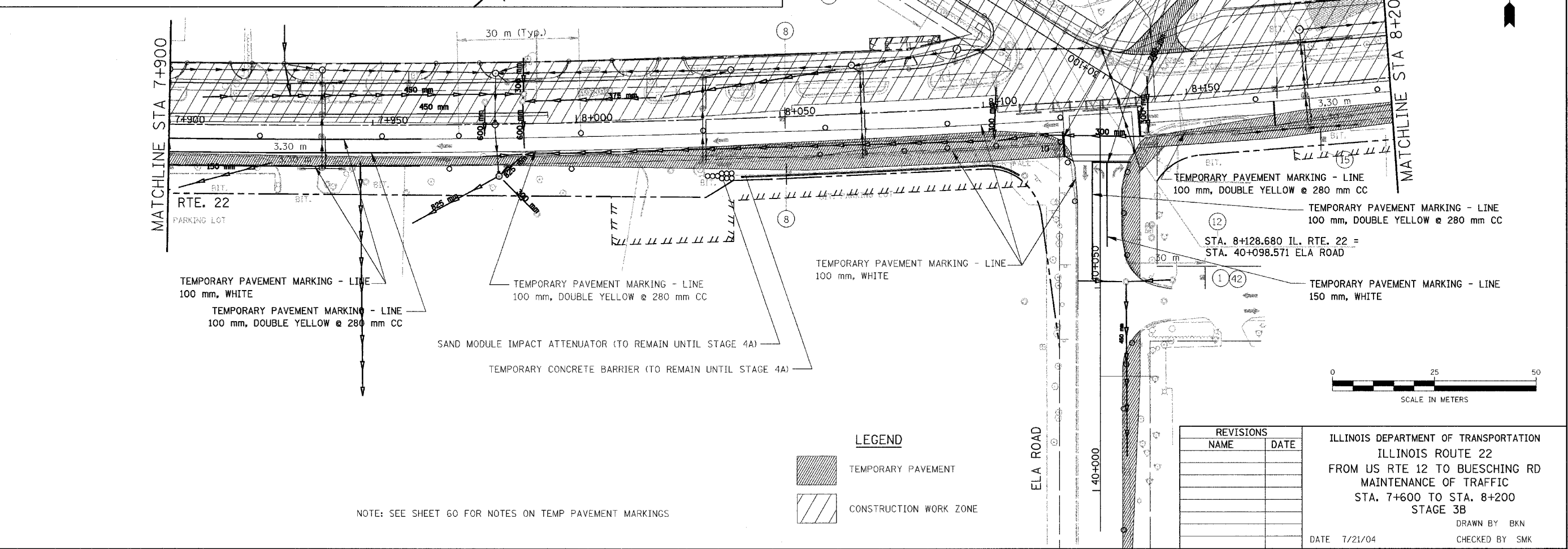


F.A. RTE.	SECTION	COUNTY	TOTAL SHEETS	SHEET NO.
337	19R-1	LAKE	800	139
STA.	TO STA.			
FED. ROAD DIST. NO.	ILLINOIS FED. AID PROJECT			

60997



TEMPORARY PAVEMENT MARKING - LINE
100 mm, WHITE
TEMPORARY PAVEMENT MARKING - LINE
150 mm, WHITE
TEMPORARY PAVEMENT MARKING - LINE
100 mm, DOUBLE YELLOW @ 280 mm CC
TEMPORARY PAVEMENT MARKING - LINE
600 mm, WHITE



TEMPORARY PAVEMENT MARKING - LINE
100 mm, WHITE
TEMPORARY PAVEMENT MARKING - LINE
100 mm, DOUBLE YELLOW @ 280 mm CC

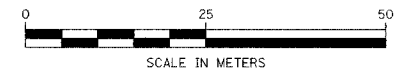
TEMPORARY PAVEMENT MARKING - LINE
600 mm, WHITE
TEMPORARY PAVEMENT MARKING - LINE
100 mm, DOUBLE YELLOW @ 280 mm CC
TEMPORARY PAVEMENT MARKING - LINE
100 mm, DOUBLE YELLOW @ 280 mm CC
TEMPORARY PAVEMENT MARKING - LINE
150 mm, WHITE

SAND MODULE IMPACT ATTENUATOR (TO REMAIN UNTIL STAGE 4A)
TEMPORARY CONCRETE BARRIER (TO REMAIN UNTIL STAGE 4A)

LEGEND

- TEMPORARY PAVEMENT
- CONSTRUCTION WORK ZONE

NOTE: SEE SHEET 60 FOR NOTES ON TEMP PAVEMENT MARKINGS



REVISIONS	
NAME	DATE

ILLINOIS DEPARTMENT OF TRANSPORTATION
ILLINOIS ROUTE 22
FROM US RTE 12 TO BUESCHING RD
MAINTENANCE OF TRAFFIC
STA. 7+600 TO STA. 8+200
STAGE 3B
DRAWN BY BKN
CHECKED BY SMK
DATE 7/21/04