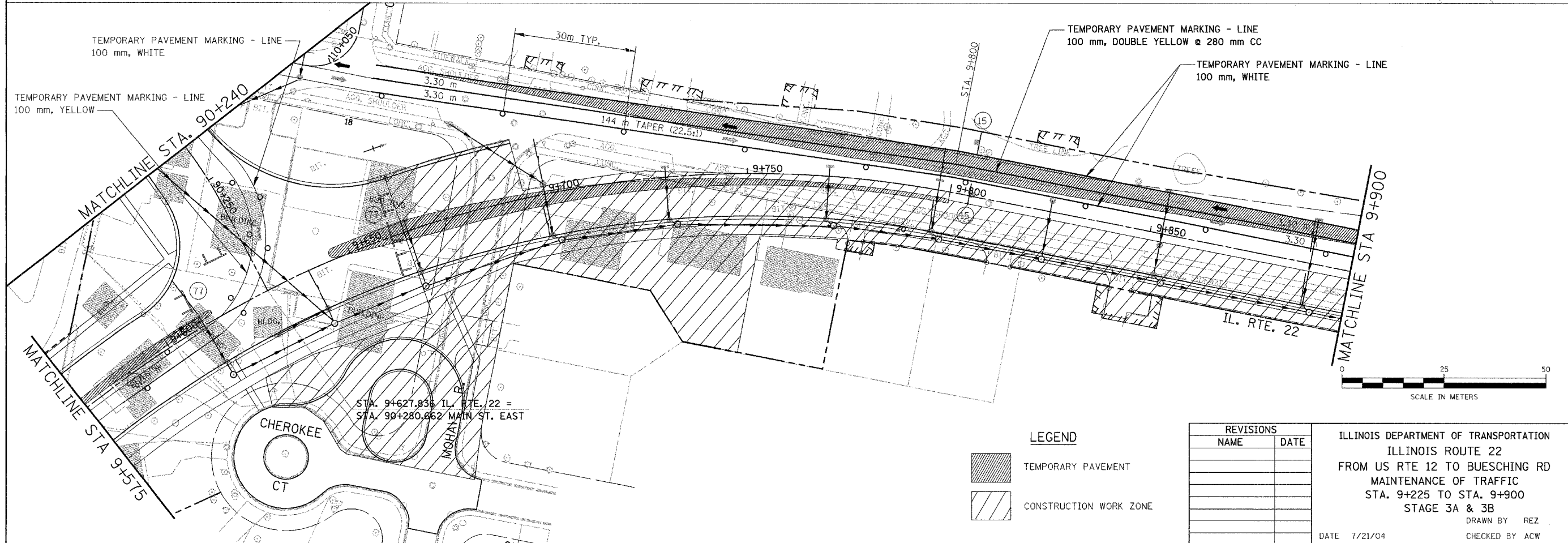
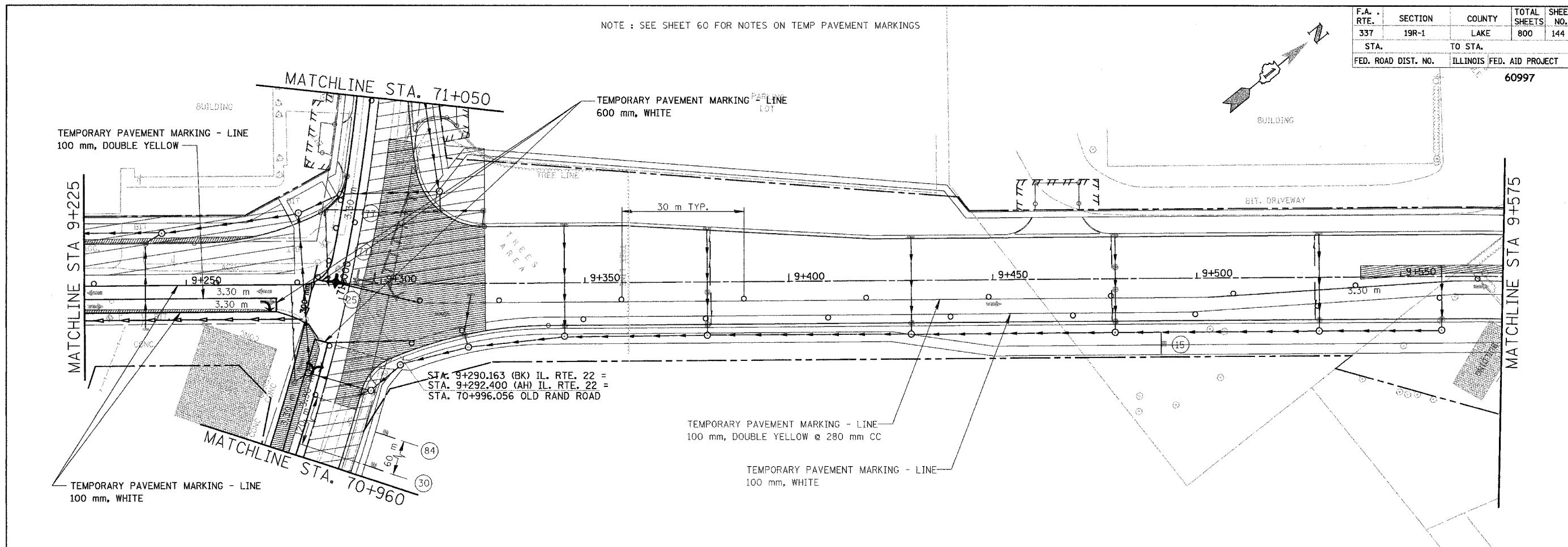


NOTE : SEE SHEET 60 FOR NOTES ON TEMP PAVEMENT MARKINGS


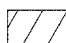
F.A. RTE.	SECTION	COUNTY	TOTAL SHEETS	SHEET NO.
337	19R-1	LAKE	800	144
STA.	TO STA.			
FED. ROAD DIST. NO.	ILLINOIS FED. AID PROJECT			

60997



STA. 9+627.838 IL. RTE. 22 =
STA. 90+280.862 MAIN ST. EAST

LEGEND

-  TEMPORARY PAVEMENT
-  CONSTRUCTION WORK ZONE

REVISIONS	
NAME	DATE

ILLINOIS DEPARTMENT OF TRANSPORTATION
ILLINOIS ROUTE 22
FROM US RTE 12 TO BUESCHING RD
MAINTENANCE OF TRAFFIC
STA. 9+225 TO STA. 9+900
STAGE 3A & 3B
DRAWN BY REZ
CHECKED BY ACW
DATE 7/21/04