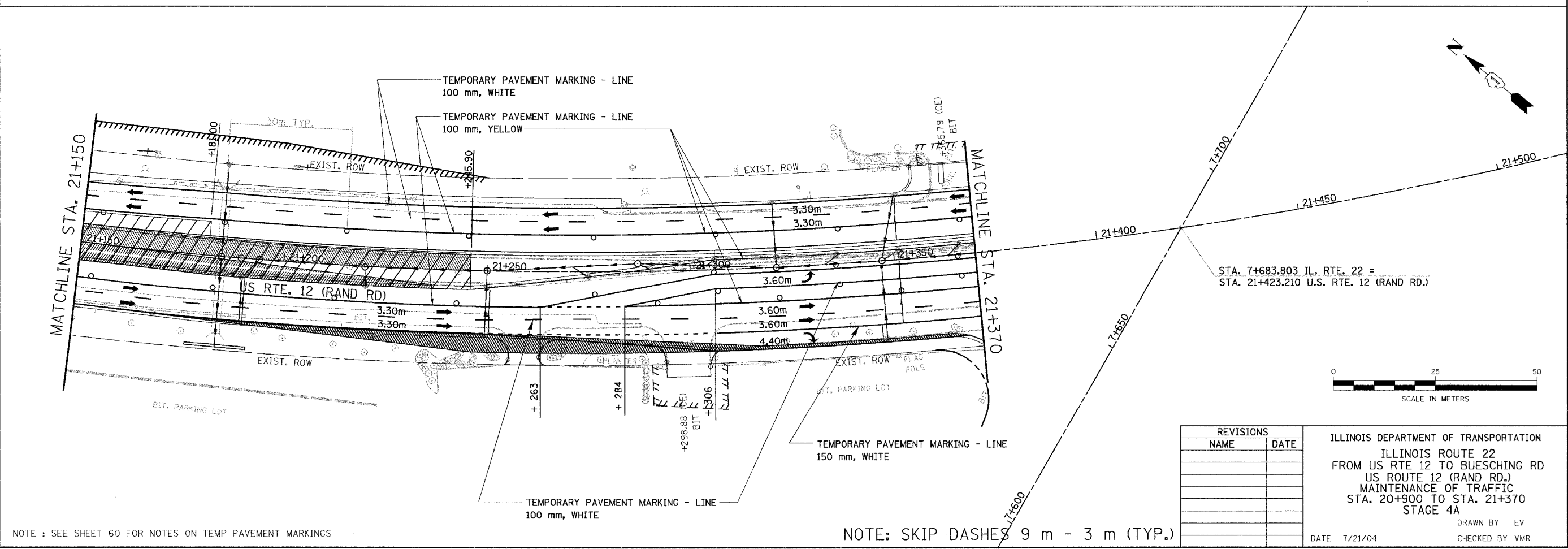
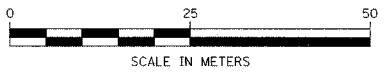


NOTE: SKIP DASHES 9 m - 3 m (TYP.)



REVISIONS	
NAME	DATE



ILLINOIS DEPARTMENT OF TRANSPORTATION  
 ILLINOIS ROUTE 22  
 FROM US RTE 12 TO BUESCHING RD  
 US ROUTE 12 (RAND RD.)  
 MAINTENANCE OF TRAFFIC  
 STA. 20+900 TO STA. 21+370  
 STAGE 4A

DRAWN BY EV  
 CHECKED BY VMR

NOTE: SEE SHEET 60 FOR NOTES ON TEMP PAVEMENT MARKINGS

NOTE: SKIP DASHES 9 m - 3 m (TYP.)

DATE 7/21/04