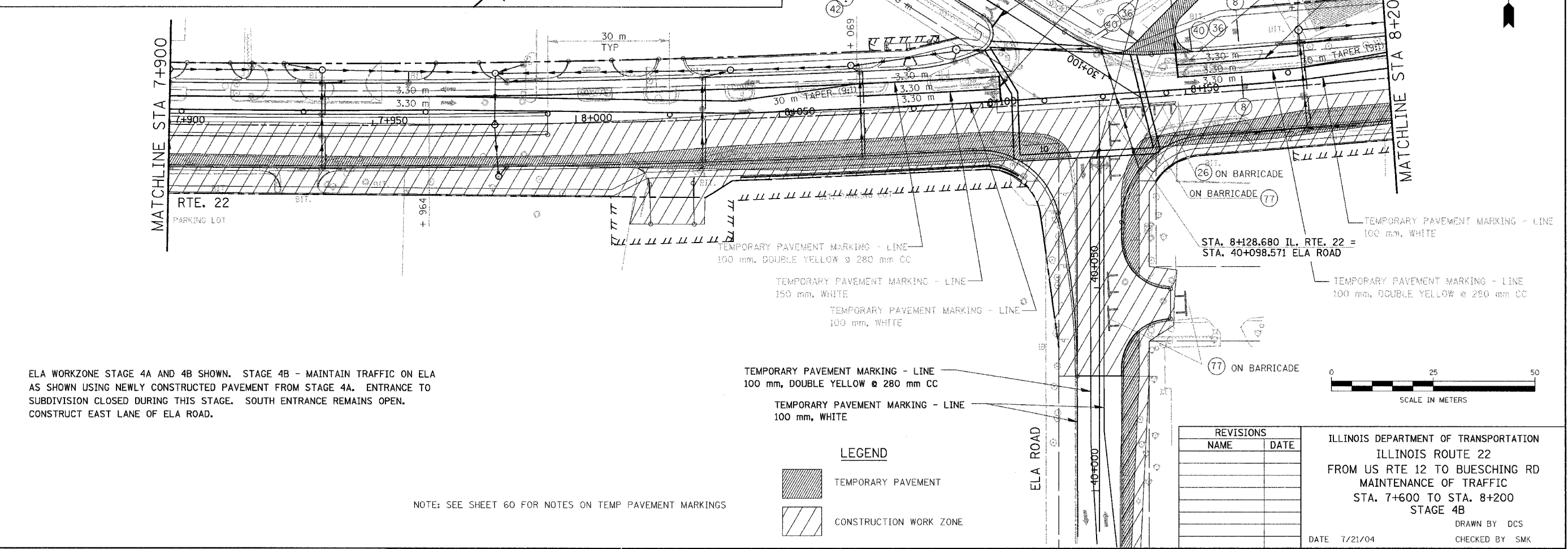
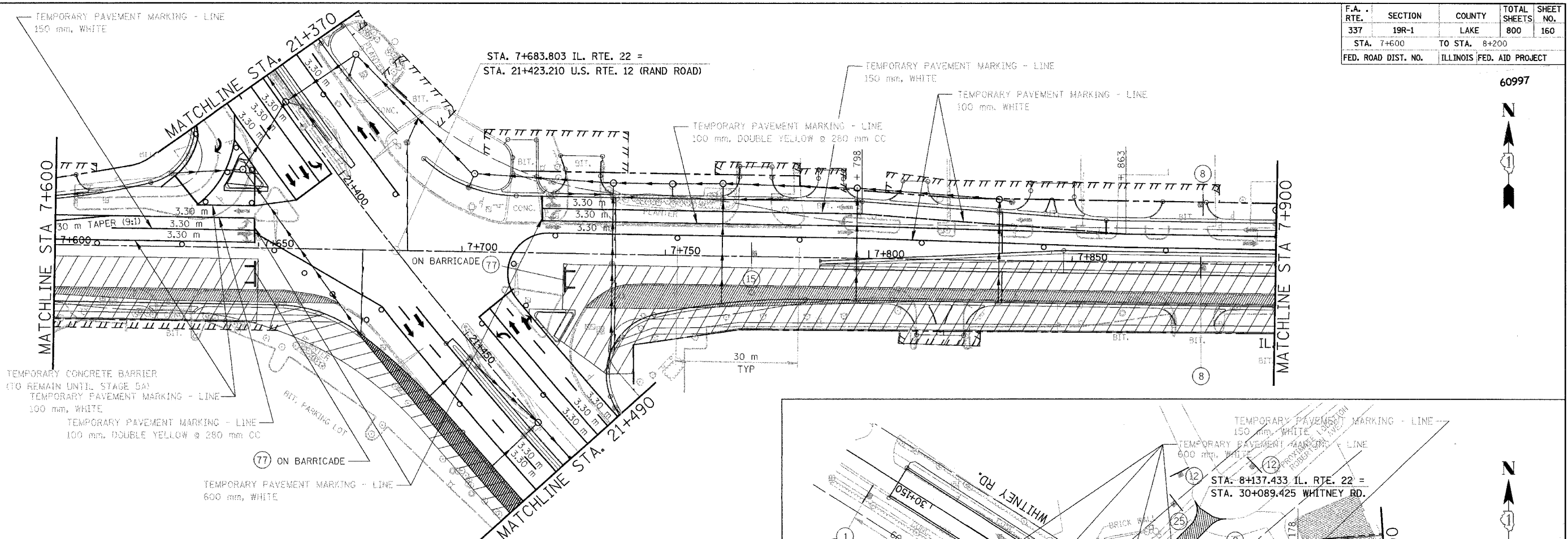


F.A. RTE.	SECTION	COUNTY	TOTAL SHEETS	SHEET NO.
337	19R-1	LAKE	800	160
STA. 7+600		TO STA. 8+200		
FED. ROAD DIST. NO.		ILLINOIS FED. AID PROJECT		

60997

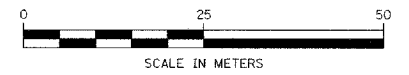


ELA WORKZONE STAGE 4A AND 4B SHOWN. STAGE 4B - MAINTAIN TRAFFIC ON ELA AS SHOWN USING NEWLY CONSTRUCTED PAVEMENT FROM STAGE 4A. ENTRANCE TO SUBDIVISION CLOSED DURING THIS STAGE. SOUTH ENTRANCE REMAINS OPEN. CONSTRUCT EAST LANE OF ELA ROAD.

NOTE: SEE SHEET 60 FOR NOTES ON TEMP PAVEMENT MARKINGS

LEGEND

	TEMPORARY PAVEMENT
	CONSTRUCTION WORK ZONE



REVISIONS	
NAME	DATE

ILLINOIS DEPARTMENT OF TRANSPORTATION
 ILLINOIS ROUTE 22
 FROM US RTE 12 TO BUESCHING RD
 MAINTENANCE OF TRAFFIC
 STA. 7+600 TO STA. 8+200
 STAGE 4B
 DRAWN BY DCS
 CHECKED BY SMK
 DATE 7/21/04