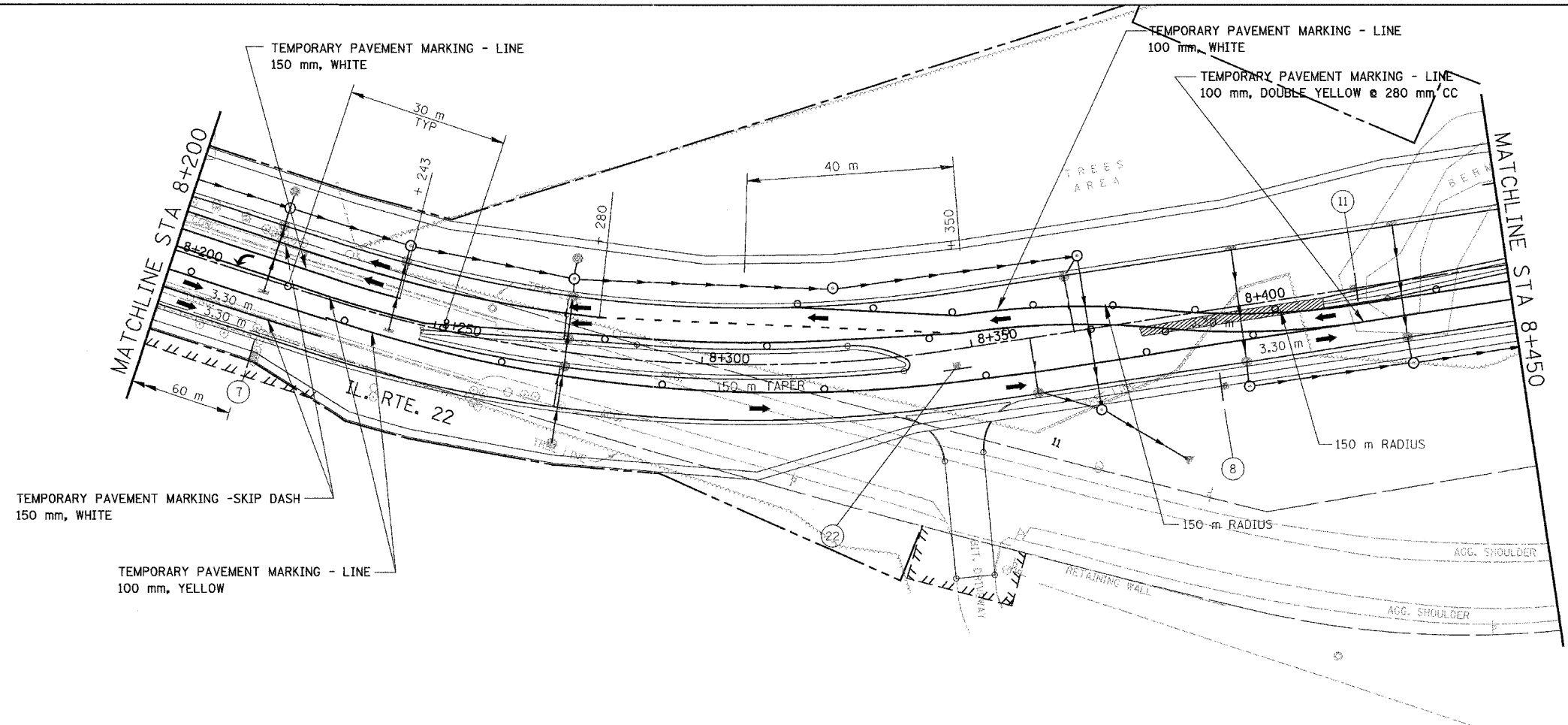
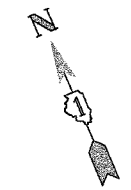
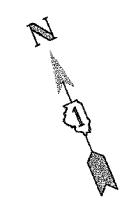
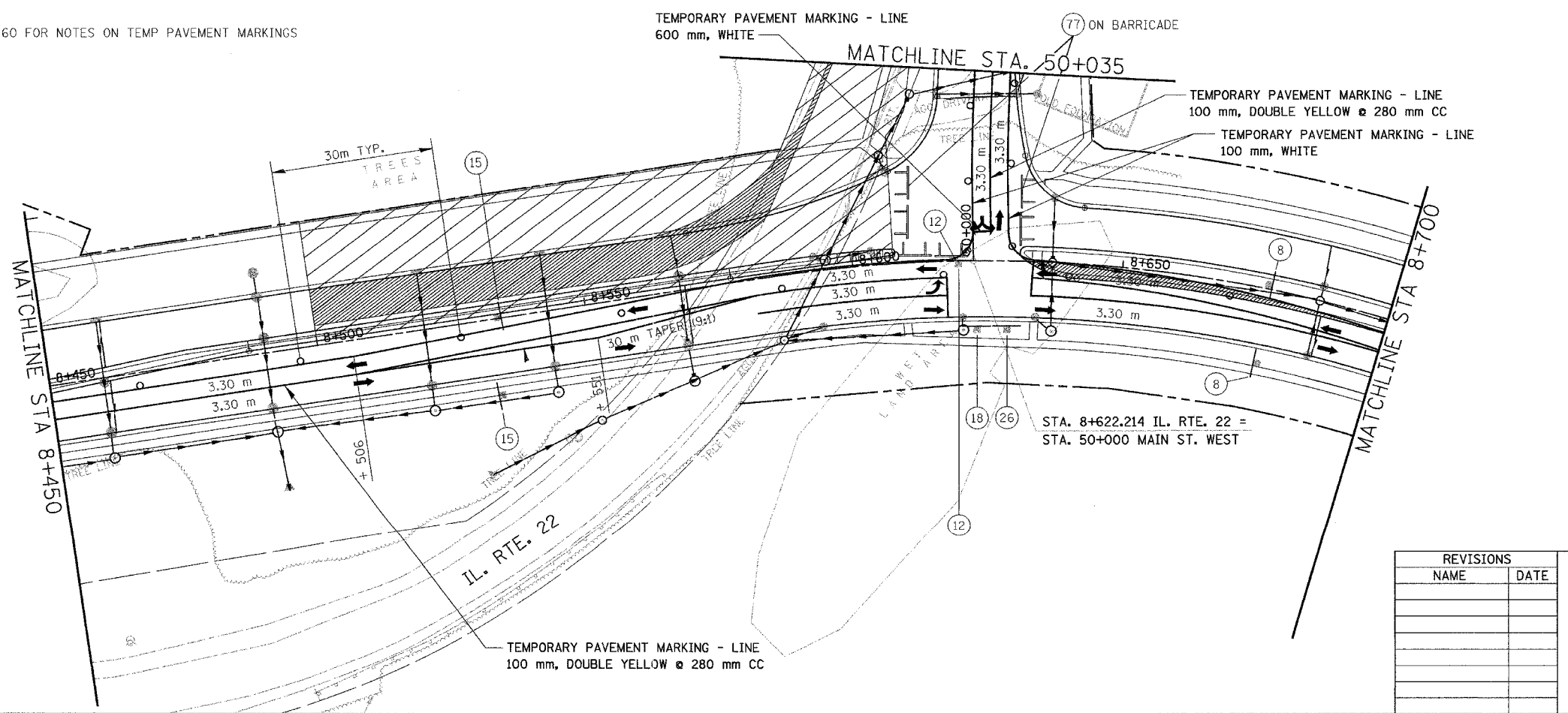


F.A. RTE.	SECTION	COUNTY	TOTAL SHEETS	SHEET NO.
337	19R-1	LAKE	800	174
STA.	TO STA.			
FED. ROAD DIST. NO.	ILLINOIS FED. AID PROJECT			

60997



NOTE: SEE SHEET 60 FOR NOTES ON TEMP PAVEMENT MARKINGS



LEGEND

- TEMPORARY PAVEMENT
- CONSTRUCTION WORK ZONE

SCALE IN METERS

REVISIONS	
NAME	DATE

ILLINOIS DEPARTMENT OF TRANSPORTATION
 ILLINOIS ROUTE 22
 FROM US RTE 12 TO BUESCHING RD
 MAINTENANCE OF TRAFFIC
 STA. 8+200 TO STA. 8+700
 STAGE 5A
 DRAWN BY BKN
 CHECKED BY SMK
 DATE 7/21/04